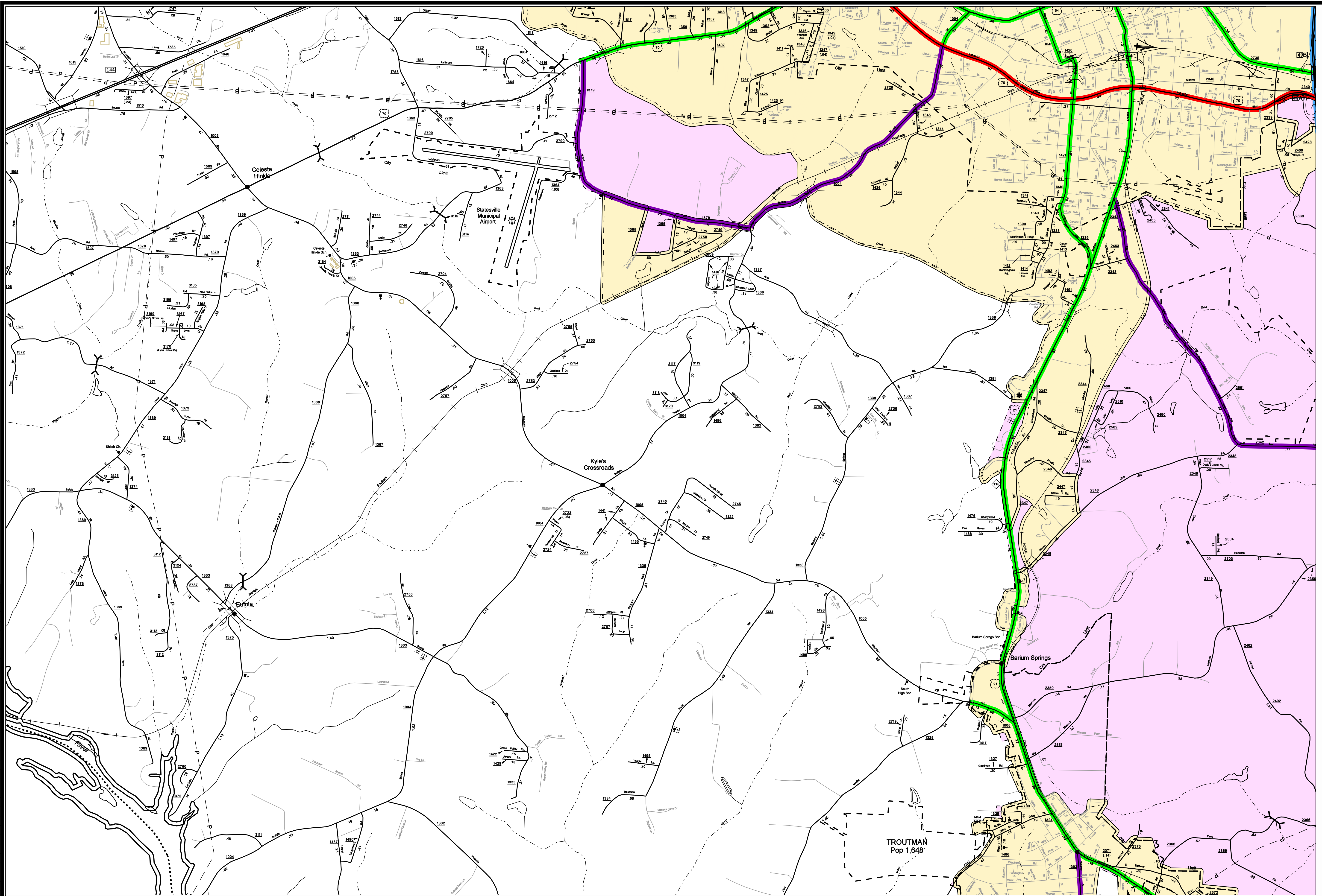
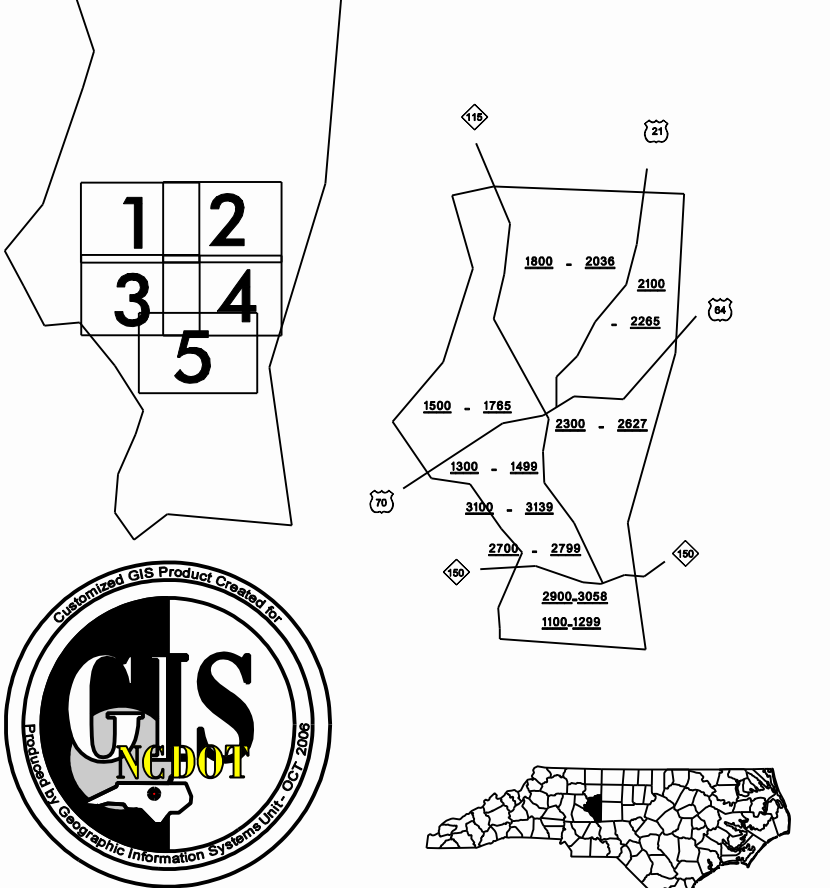


Customized GIS map checked by P & A
 Mapping
 Road Inv.
 REVISED



LEGEND

ROAD	4 LANE UNDIVIDED HIGHWAY	DIVIDED HIGHWAY	FULL CONTROL ACCESS	DETAILED HIGHWAY INTERCHANGE	ROAD THROUGH MOUNTAIN PASS	HIGHWAY BRIDGE	OVERPASS	DRAW SPAN ON BRIDGE	HIGHWAY TUNNEL	FORD	INTERSTATE HIGHWAY	U.S. NUMBERED HIGHWAY	N.C. NUMBERED HIGHWAY	N.C. NUMBERED BICYCLE ROUTE	U.S. NUMBERED BICYCLE ROUTE	INTERSTATE INTERCHANGE NUMBER	SECONDARY ROAD NUMBER	RAILROAD ANY NUMBER OF TRACKS USED BY SINGLE OPERATING COMPANY	RAILROAD ANY NUMBER OF TRACKS USED BY MORE THAN ONE OPERATING COMPANY OR SAME OR ADJACENT ROUTES OR WAY	RAILROAD STATION	GRADE CROSSING	UNDERPASS	OVERPASS	RAILROAD TUNNEL	RAILROAD BRIDGE	UNINCORPORATED CENSUS DESIGNATED PLACE	CITY LIMIT	COUNTY LINE	STATE LINE	INCORPORATED CITY OR VILLAGE (GENERALIZED)	CABLE	RESERVATION OR PARK BOUNDARY	INLET AREA	FREE OR TOLL FERRY	CANAL	NARROW STREAM	WIDE STREAM	DAM WITH LOCK	DAM	RESERVOIR, POND, OR LAKE	COUNTY SEAT	AND TOWN CENTER	TOWN HALL	SCHOOL	COLLEGE OR UNIVERSITY	HOSPITAL	CHURCH	CHURCH WITH CEMETERY	CEMETERY	FAIRGROUND OR RACETRACK	POST OFFICE	POWER PLANT	POWER SUBSTATION	PATROL STATION	COMMERCIAL OR RETAIL WHOLESALE HIGHWAY GARAGE OR MAINT. YARD	WEIGHT STATION	SHARP OR MARSH	GRAVE PIT OR GALILEY	MONUMENT-SMALL HISTORICAL SITE	LIGHTHOUSE	MOUNTAIN PEAK	NAME	REST AREA	MUNICIPAL PARK	TRANQUILIZATION STATION	SCOUT GUARD STATION	FEDERAL GAME LAND	MILITARY AIRFIELD	COMBINATION OR MUNICIPAL FIELD	HANGAR ON FIELD	LANDING STRIP	MARKED AIRWAY FIELD	WATERHOUSES OR MANUFACTURING PLANTS	SHOPPING CENTERS
------	--------------------------	-----------------	---------------------	------------------------------	----------------------------	----------------	----------	---------------------	----------------	------	--------------------	-----------------------	-----------------------	-----------------------------	-----------------------------	-------------------------------	-----------------------	--	---	------------------	----------------	-----------	----------	-----------------	-----------------	--	------------	-------------	------------	--	-------	------------------------------	------------	--------------------	-------	---------------	-------------	---------------	-----	--------------------------	-------------	-----------------	-----------	--------	-----------------------	----------	--------	----------------------	----------	-------------------------	-------------	-------------	------------------	----------------	--	----------------	----------------	----------------------	--------------------------------	------------	---------------	------	-----------	----------------	-------------------------	---------------------	-------------------	-------------------	--------------------------------	-----------------	---------------	---------------------	-------------------------------------	------------------



SUPPLEMENTAL LEGEND

Blue and red hatched	INTERSTATE
Blue and brown hatched	FUTURE INTERSTATE
Blue and green hatched	FREEWAY / EXPRESSWAY
Blue and purple hatched	FUTURE FREEWAY/EXPRESSWAY
Red and green hatched	OTHER PRINCIPAL ARTERIAL
Yellow and green hatched	FUTURE PRINCIPAL ARTERIAL
Light green	MINOR ARTERIAL
Dark green	FUTURE MINOR ARTERIAL
Blue	COLLECTOR
Light blue	FUTURE COLLECTOR
Pink	EXISTING URBAN AREA
Light purple	SMOOTHED AREA

APPROVED BY FHWA FEB. 14, 2006

STATESVILLE URBAN CLUSTER

INCLUDED IN
 IREDELL COUNTY

NORTH CAROLINA

PREPARED BY
 NORTH CAROLINA DEPARTMENT OF TRANSPORTATION
 INFORMATION TECHNOLOGY - GIS UNIT
 IN COOPERATION WITH THE
 U.S. DEPARTMENT OF TRANSPORTATION
 FEDERAL HIGHWAY ADMINISTRATION

