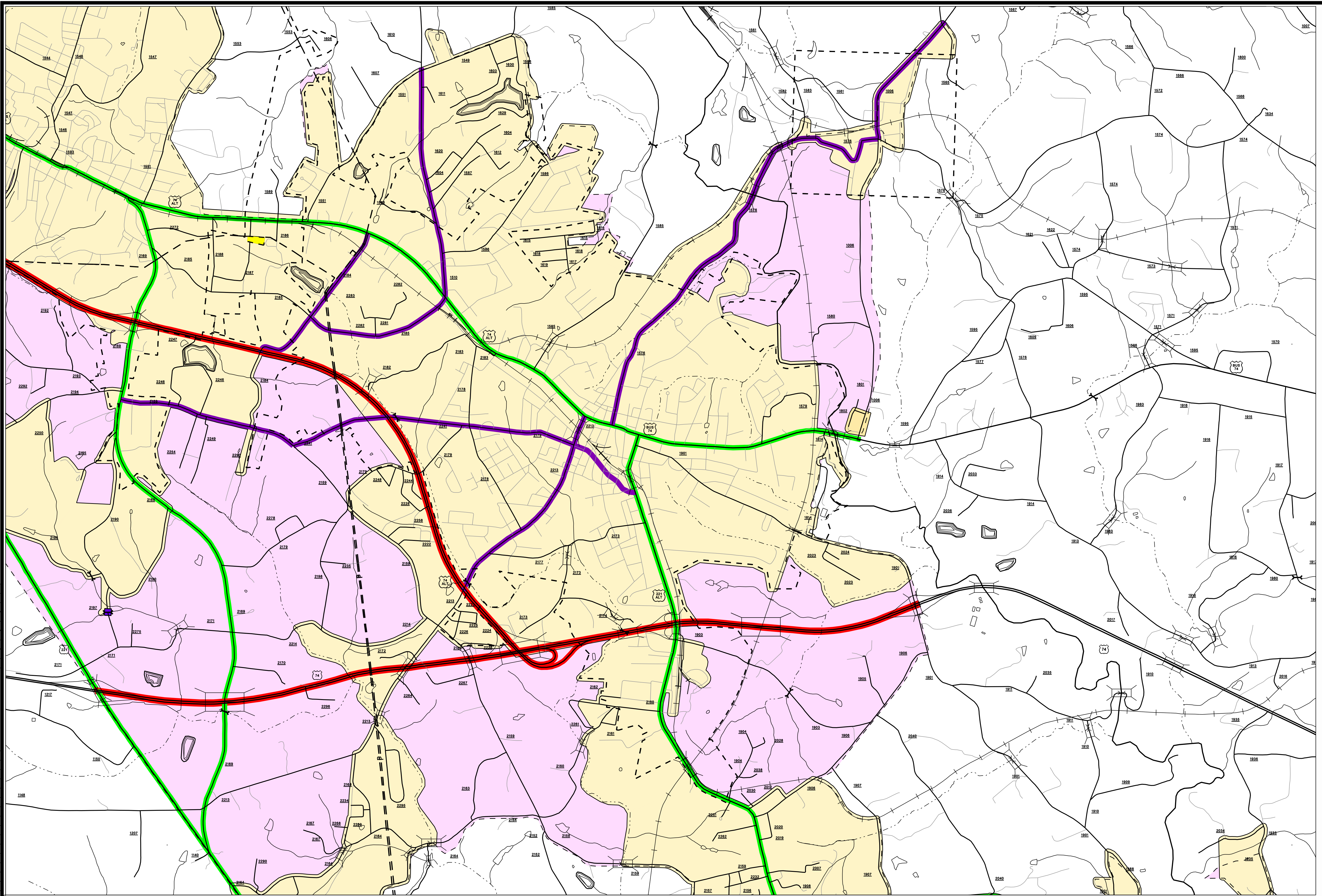


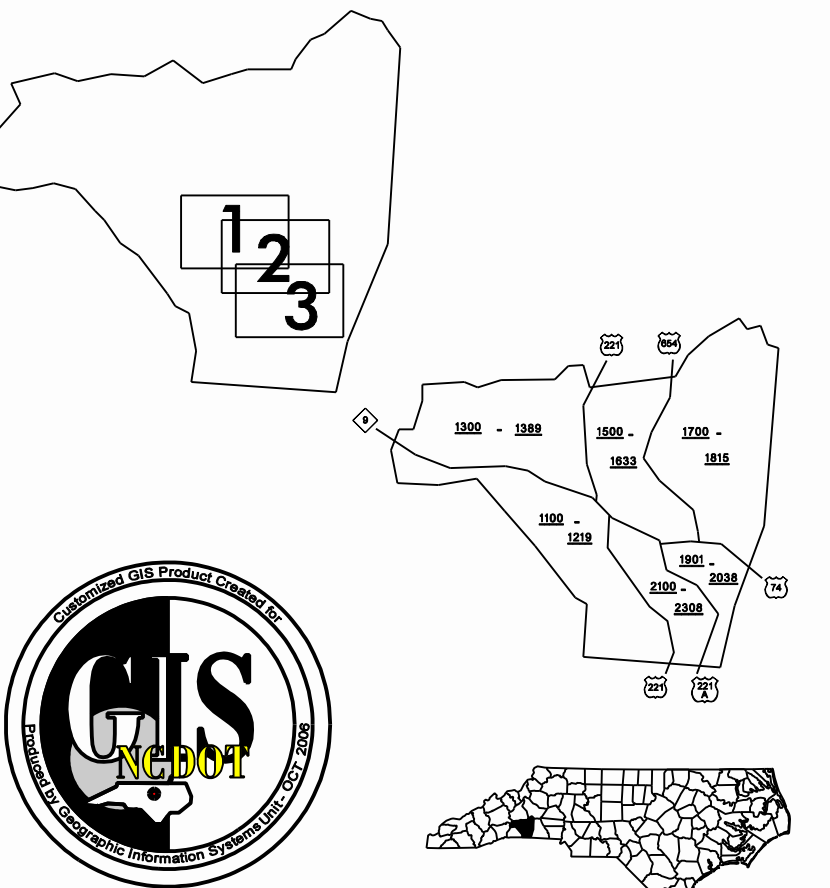
Disclaimer: Although the GIS Unit's goal is to provide the most correct and complete information as possible, the magnitude and dynamics of the data prevent any guarantee of accuracy or completeness. If you find any information that should be corrected, please send your request to the GIS Unit.

Customized GIS map checked by P & A  
Mapping  
Road Inv.  
REVISED



**LEGEND**

ROAD	4 LANE UNDIVIDED HIGHWAY	DIVIDED HIGHWAY	FCA	FULL CONTROL ACCESS	DETAILED HIGHWAY INTERCHANGE	ROAD THROUGH MOUNTAIN PASS	HIGHWAY BRIDGE	UNDERPASS	OVERPASS	DRAW SPAN ON BRIDGE	HIGHWAY TUNNEL	FORD	INTERSTATE HIGHWAY	U.S. NUMBERED HIGHWAY	N.C. NUMBERED HIGHWAY	U.S. NUMBERED BICYCLE ROUTE	N.C. NUMBERED BICYCLE ROUTE	INTERSTATE INTERCHANGE NUMBER	SECONDARY ROAD NUMBER	RAILROAD ANY NUMBER OF TRACKS USED BY SINGLE OPERATING COMPANY	RAILROAD ANY NUMBER OF TRACKS USED BY MORE THAN ONE OPERATING COMPANY ON SAME OR ADJACENT ROUTE-CORRAL	RAILROAD STATION	GRADE CROSSING	UNDERPASS	OVERPASS	RAILROAD TUNNEL	RAILROAD BRIDGE	UNINCORPORATED CENSUS DESIGNATED PLACE	CITY LIMIT	COUNTY LINE	STATE LINE	INCORPORATED CITY OR VILLAGE (GEOGRAPHIC)	RAILROAD	CABLE	RESERVATION OR PARK BOUNDARY	INSET AREA	FREE OR TOLL FERRY	CANAL	NARROW STREAM	WIDE STREAM	DAM WITH LOCK	DAM	RESERVOIR, POND, OR LAKE	COUNTY SEAT	COMMUNITY AND TOWN CENTER	TOWN HALL	SCHOOL	COLLEGE OR UNIVERSITY	HOSPITAL	CHURCH	CHURCH WITH CEMETERY	CEMETERY	POST OFFICE	POWER PLANT	POWER SUBSTATION	PATROL STATION	COMMERCIAL OR RETAIL WHOLESALE HIGHWAY GARAGE OR MAINT. YARD	WEIGHT STATION	SHARP OR MARSH	GRAVEL PIT OR QUARRY	MONUMENT-SMALL HISTORICAL SITE	LIGHTHOUSE	MOUNTAIN PEAK	NAME	REST AREA	MUNICIPAL PARK	TRANQUILIZATION STATION	SCOUT GUARD STATION	FEDERAL GAME LAND	MILITARY AIRFIELD	COMMERCIAL OR MUNICIPAL FIELD	HANGAR ON FIELD	LANDING STRIP	MARSHED AIRWAY FIELD	WAREHOUSES OR MANUFACTURING PLANTS	SHOPPING CENTRES
------	--------------------------	-----------------	-----	---------------------	------------------------------	----------------------------	----------------	-----------	----------	---------------------	----------------	------	--------------------	-----------------------	-----------------------	-----------------------------	-----------------------------	-------------------------------	-----------------------	--	--	------------------	----------------	-----------	----------	-----------------	-----------------	--	------------	-------------	------------	---	----------	-------	------------------------------	------------	--------------------	-------	---------------	-------------	---------------	-----	--------------------------	-------------	---------------------------	-----------	--------	-----------------------	----------	--------	----------------------	----------	-------------	-------------	------------------	----------------	--	----------------	----------------	----------------------	--------------------------------	------------	---------------	------	-----------	----------------	-------------------------	---------------------	-------------------	-------------------	-------------------------------	-----------------	---------------	----------------------	------------------------------------	------------------



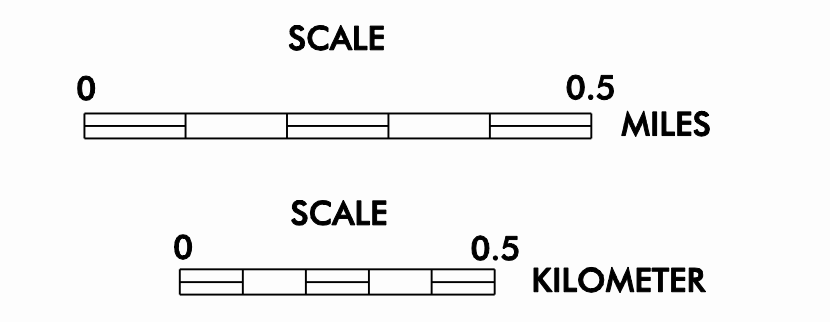
**SUPPLEMENTAL LEGEND**

Blue dashed line	INTERSTATE
Blue solid line	FUTURE INTERSTATE
Red dashed line	FREEWAY / EXPRESSWAY
Red solid line	FUTURE FREEWAY/EXPRESSWAY
Green dashed line	OTHER PRINCIPAL ARTERIAL
Green solid line	FUTURE PRINCIPAL ARTERIAL
Purple dashed line	MINOR ARTERIAL
Purple solid line	FUTURE MINOR ARTERIAL
Yellow dashed line	COLLECTOR
Yellow solid line	FUTURE COLLECTOR
Light yellow shaded area	EXISTING URBAN AREA
Pink shaded area	SMOOTHED AREA

APPROVED BY FHWA FEB. 14, 2006

**FOREST CITY  
URBAN CLUSTER**  
INCLUDED IN  
RUTHERFORD COUNTY  
**NORTH CAROLINA**

PREPARED BY  
NORTH CAROLINA DEPARTMENT OF TRANSPORTATION  
INFORMATION TECHNOLOGY - GIS UNIT  
IN COOPERATION WITH THE  
U.S. DEPARTMENT OF TRANSPORTATION  
FEDERAL HIGHWAY ADMINISTRATION



1"=1500'=457.2m