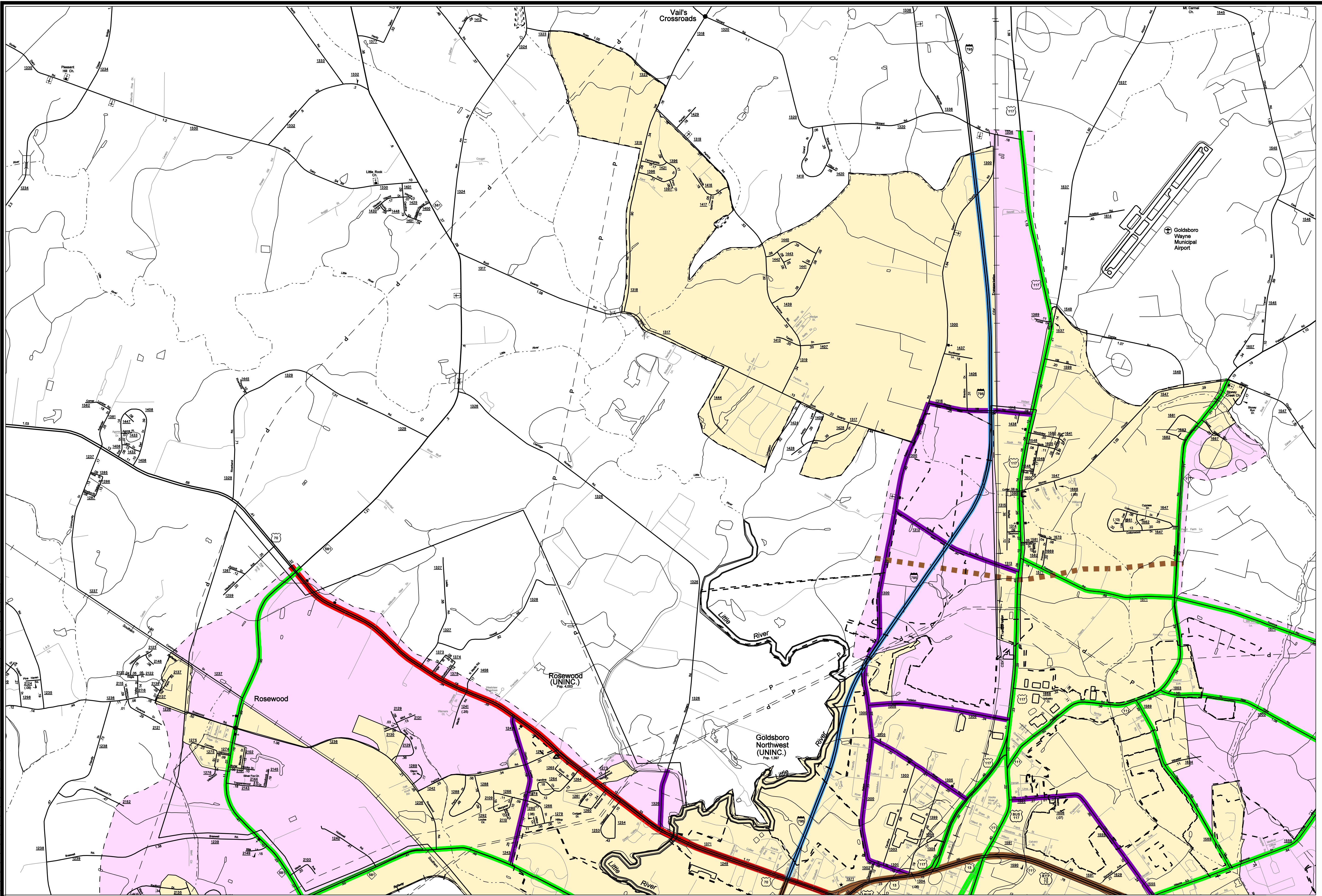


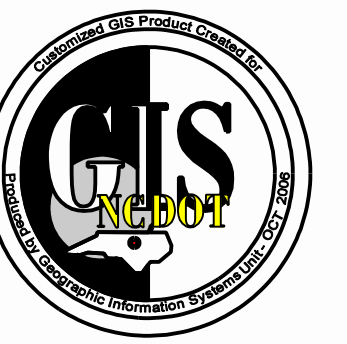
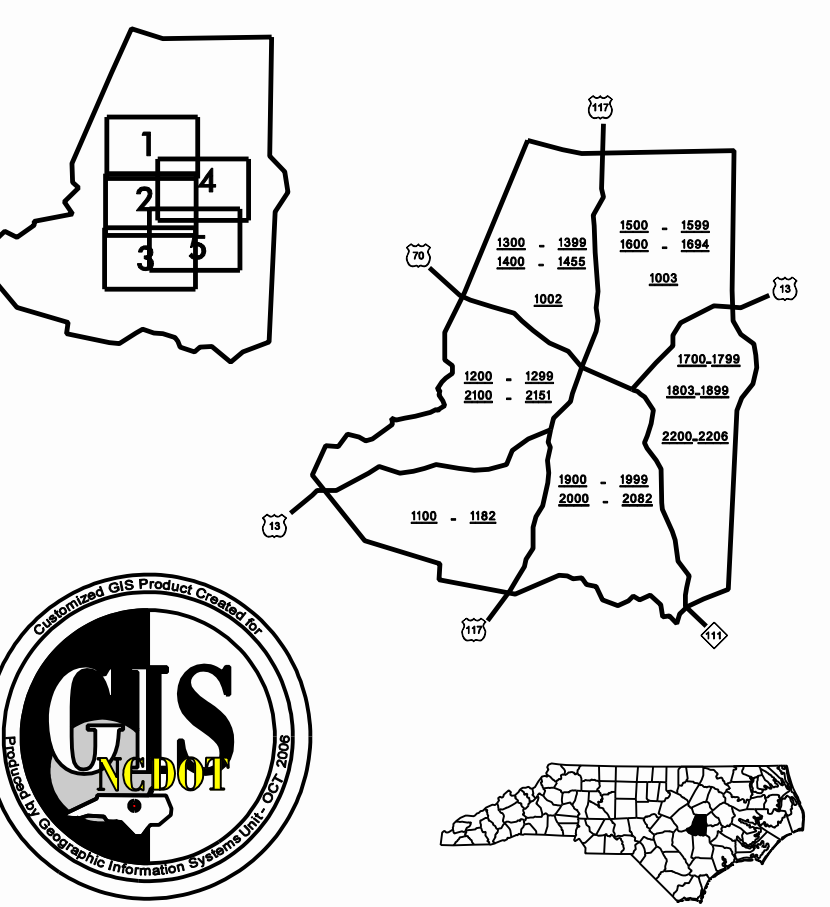
Disclaimer: Although the GIS Unit's goal is to provide the most correct and complete information as possible, the magnitude and dynamics of the data prevent any guarantee of accuracy or completeness. If you find any information that should be corrected, please send your request to the GIS Unit.

Customized GIS map checked by P & A
 Mapping
 Road Inv.
 REVISED



LEGEND

ROAD	4 LANE UNDIVIDED HIGHWAY	DIVIDED HIGHWAY	FCA	DETAILED HIGHWAY INTERCHANGE	ROAD THROUGH MOUNTAIN PASS	HIGHWAY BRIDGE	UNDERPASS	OVERPASS	DRAW SPAN ON BRIDGE	HIGHWAY TUNNEL	FORD	INTERSTATE HIGHWAY	U.S. NUMBERED HIGHWAY	N.C. NUMBERED HIGHWAY	U.S. NUMBERED BICYCLE ROUTE	N.C. NUMBERED BICYCLE ROUTE	INTERSTATE INTERCHANGE NUMBER	SECONDARY ROAD NUMBER	RAILROAD ANY NUMBER OF TRACKS USED BY SINGLE OPERATING COMPANY	RAILROAD ANY NUMBER OF TRACKS USED BY MORE THAN ONE OPERATING COMPANY OR SAME OR ADJACENT ROUTE-CO-WAY	RAILROAD STATION	RAILROAD BRIDGE	RAILROAD TUNNEL	RAILROAD BRIDGE	UNINCORPORATED CENSUS DESIGNATED PLACE	CITY LIMIT	COUNTY LINE	STATE LINE	INCORPORATED CITY OR VILLAGE (UNSHADDED)	CABLE	RESERVATION OR PARK BOUNDARY	INLET AREA	FREE OR TOLL FERRY	CANAL	NARROW STREAM	WIDE STREAM	DAM WITH LOCK	DAM	RESERVOIR, POND, OR LAKE	COUNTY SEAT	COMMUNITY AND TOWN CENTER	TOWN HALL	SCHOOL	COLLEGE OR UNIVERSITY	HOSPITAL	CHURCH	CHURCH WITH CEMETERY	CEMETERY	POST OFFICE	POWER PLANT	POWER SUBSTATION	PATROL STATION	COMMERCIAL OR RETAIL WHOLESALE HIGHWAY DIV. OR DIST. OFFICE	WEIGHT STATION	SHARP OR MARSH	GRAVEL PIT OR QUARRY	MONUMENT-SMALL HISTORICAL SITE	LIGHTHOUSE	MOUNTAIN PEAK	NAME	REST AREA	MUNICIPAL PARK	TRANSMISSION STATION	STATE GUARD STATION	JAIL	FEDERAL GAME LAND	MILITARY AIRFIELD	COMMERICAL OR MUNICIPAL FIELD	HANGAR ON FIELD	LANDING STRIP	MARKED AIRWAY FIELD	WAREHOUSES OR MANUFACTURING PLANTS	SHOPPING CENTRES
------	--------------------------	-----------------	-----	------------------------------	----------------------------	----------------	-----------	----------	---------------------	----------------	------	--------------------	-----------------------	-----------------------	-----------------------------	-----------------------------	-------------------------------	-----------------------	--	--	------------------	-----------------	-----------------	-----------------	--	------------	-------------	------------	--	-------	------------------------------	------------	--------------------	-------	---------------	-------------	---------------	-----	--------------------------	-------------	---------------------------	-----------	--------	-----------------------	----------	--------	----------------------	----------	-------------	-------------	------------------	----------------	---	----------------	----------------	----------------------	--------------------------------	------------	---------------	------	-----------	----------------	----------------------	---------------------	------	-------------------	-------------------	-------------------------------	-----------------	---------------	---------------------	------------------------------------	------------------



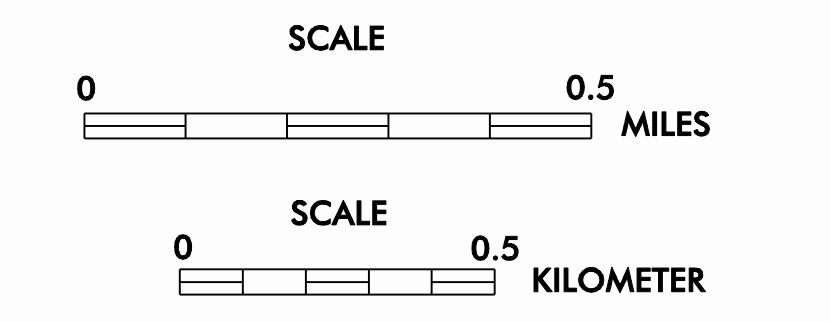
SUPPLEMENTAL LEGEND

Blue dashed line	INTERSTATE
Blue solid line	FUTURE INTERSTATE
Blue double line	FREEWAY / EXPRESSWAY
Blue dashed double line	FUTURE FREEWAY/EXPRESSWAY
Red dashed line	OTHER PRINCIPAL ARTERIAL
Red solid line	FUTURE PRINCIPAL ARTERIAL
Green dashed line	MINOR ARTERIAL
Green solid line	FUTURE MINOR ARTERIAL
Purple dashed line	COLLECTOR
Purple solid line	FUTURE COLLECTOR
Yellow shaded area	EXISTING URBAN AREA
Light purple shaded area	SMOOTHED AREA

APPROVED BY FHWA FEB. 14, 2006

**GOLDSBORO
 URBANIZED AREA**
 INCLUDED IN
 WAYNE COUNTY
NORTH CAROLINA

PREPARED BY
 NORTH CAROLINA DEPARTMENT OF TRANSPORTATION
 INFORMATION TECHNOLOGY - GIS UNIT
 IN COOPERATION WITH THE
 U.S. DEPARTMENT OF TRANSPORTATION
 FEDERAL HIGHWAY ADMINISTRATION



1"=1500'=457.2m