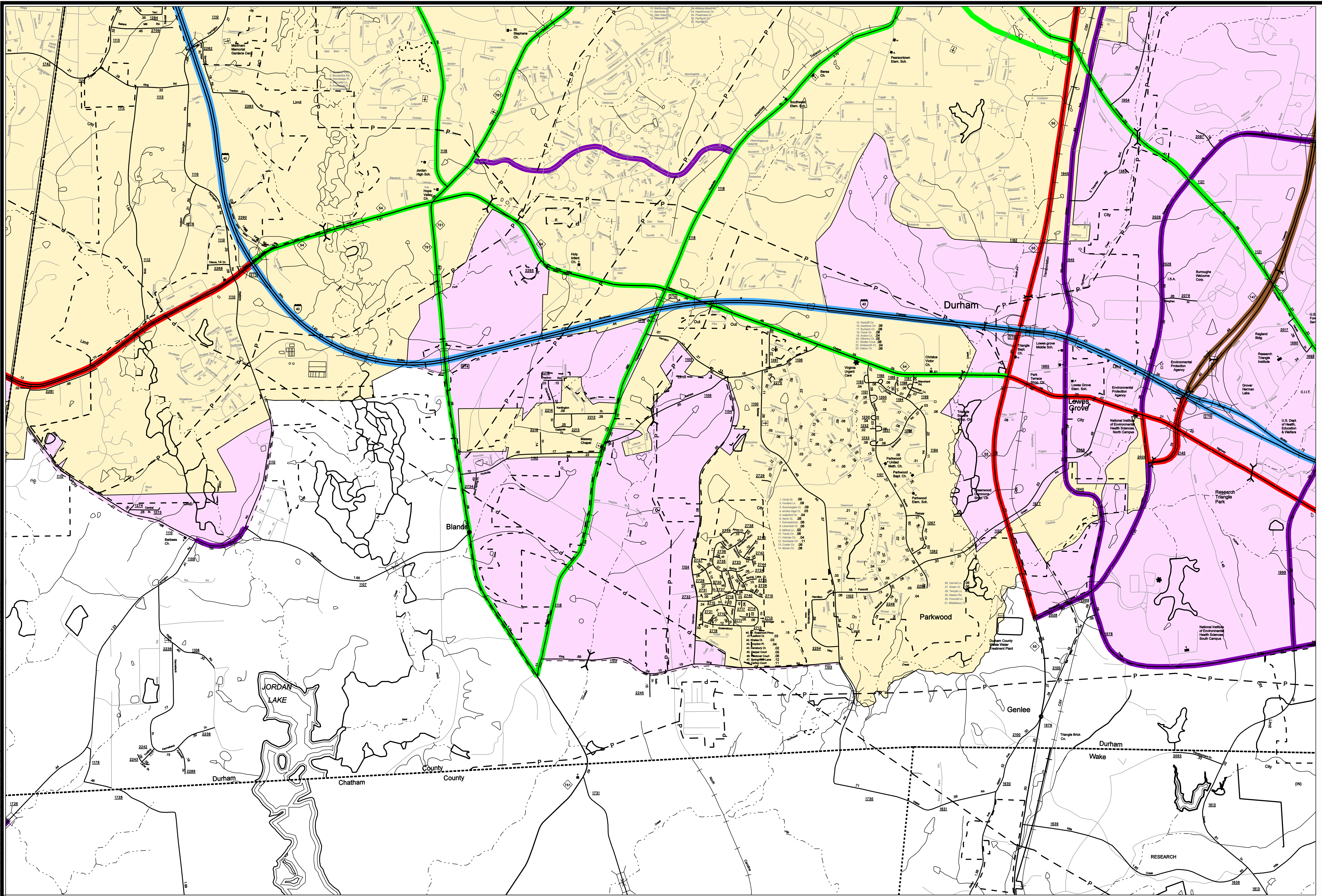


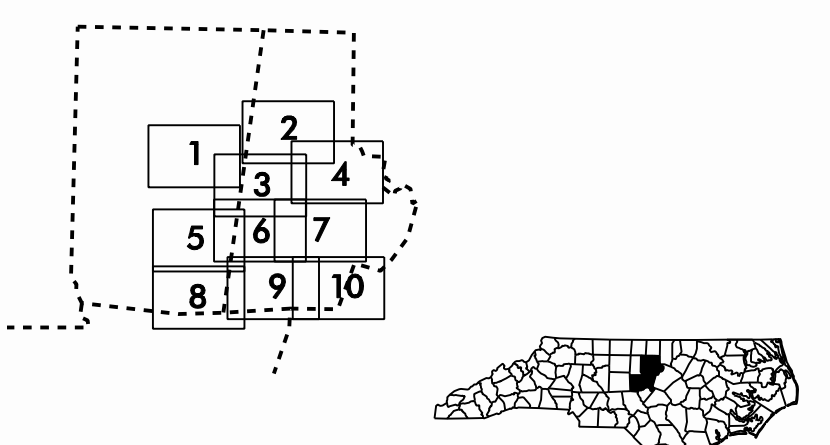
Disclaimer: Although the GIS Unit's goal is to provide the most correct and complete information as possible, the magnitude and dynamics of the data prevent any guarantee of accuracy or completeness. If you find any information that should be corrected, please send your request to the GIS Unit.

Customized GIS map checked by P & A  
Mapping  
Road Inv.  
County  
County  
REVISED



**LEGEND**

ROAD	4 LANE UNDIVIDED HIGHWAY	DIVIDED HIGHWAY	DETAILED HIGHWAY INTERCHANGE	ROAD THROUGH MOUNTAIN PASS	HIGHWAY BRIDGE	OVERPASS	DRAW SPAN ON BRIDGE	HIGHWAY TUNNEL	FORD	INTERSTATE HIGHWAY	U.S. NUMBERED HIGHWAY	U.S. NUMBERED HIGHWAY	U.S. NUMBERED BICYCLE ROUTE	INTERSTATE INTERCHANGE NUMBER	SECONDARY ROAD NUMBER	RAILROAD ANY NUMBER OF TRACKS USED BY SINGLE OPERATING COMPANY	RAILROAD ANY NUMBER OF TRACKS COMPANY OR STATE OR ADJACENT STATES-COUNTRY	RAILROAD STATION	GRADE CROSSING	UNDERPASS	OVERPASS	RAILROAD TUNNEL	RAILROAD BRIDGE	UNINCORPORATED CENSUS DISCONTINUED PLACE	CITY LIMIT	COUNTY LINE	STATE LINE	INCORPORATED CITY OR VILLAGE, (GENERALIZED)	TELEPHONE	CABLE	RESERVATION OR PARK BOUNDARY	INLET AREA	FERRIS OR TOLL FERRY	CANAL	NARROW STREAM	WIDE STREAM	DAM WITH LOCK	DAM	RESERVOIR, POND, OR LAKE	COUNTY SEAT	COMMUNITY AND TOWN CENTER	TOWN HALL	SCHOOL	COLLEGE OR UNIVERSITY	HOSPITAL	CHURCH WITH CEMETERY	CEMETERY	CEMETERY OR SACRILEG	POST OFFICE	POWER PLANT	POWER SUBSTATION	PATROL STATION	COMMERCIAL OR RETAIL WHOL	HIGHWAY GARAGE OR MAINT. YARD	WEIGHT STATION	SWAMP OR MARSH	GRAVEL PIT OR QUARRY	MONUMENT-SMALL HISTORICAL SITE	LIGHTHOUSE	MOUNTAIN PEAK	NAME	REST AREA	MUNICIPAL PARK	TRANQUILIZATION STATION	STATE GUARD STATION	JAIL	FEDERAL GAME LAND	MILITARY AIRFIELD	COMMERCIAL OR MUNICIPAL FIELD	HANGAR ON FIELD	LANDING STRIP	MARKED AIRFIELD FIELD	WAREHOUSES OR MANUFACTURING PLANTS	SHOPPING CENTRES
------	--------------------------	-----------------	------------------------------	----------------------------	----------------	----------	---------------------	----------------	------	--------------------	-----------------------	-----------------------	-----------------------------	-------------------------------	-----------------------	--	---	------------------	----------------	-----------	----------	-----------------	-----------------	--	------------	-------------	------------	---	-----------	-------	------------------------------	------------	----------------------	-------	---------------	-------------	---------------	-----	--------------------------	-------------	---------------------------	-----------	--------	-----------------------	----------	----------------------	----------	----------------------	-------------	-------------	------------------	----------------	---------------------------	-------------------------------	----------------	----------------	----------------------	--------------------------------	------------	---------------	------	-----------	----------------	-------------------------	---------------------	------	-------------------	-------------------	-------------------------------	-----------------	---------------	-----------------------	------------------------------------	------------------



**SUPPLEMENTAL LEGEND**

Blue line	INTERSTATE
Red line	FUTURE INTERSTATE
Green line	FREEWAY / EXPRESSWAY
Yellow line	FUTURE FREEWAY/EXPRESSWAY
Orange line	OTHER PRINCIPAL ARTERIAL
Purple line	FUTURE PRINCIPAL ARTERIAL
Light blue line	MINOR ARTERIAL
Light purple line	FUTURE MINOR ARTERIAL
Light green line	COLLECTOR
Light yellow line	FUTURE COLLECTOR
Yellow shaded area	EXISTING URBAN AREA
Pink shaded area	SMOOTHED AREA

APPROVED BY FHWA FEB. 14, 2006

### DURHAM-CHAPEL HILL URBANIZED AREA

INCLUDED IN CHATHAM, DURHAM AND ORANGE COUNTIES

### NORTH CAROLINA

PREPARED BY NORTH CAROLINA DEPARTMENT OF TRANSPORTATION INFORMATION TECHNOLOGY - GIS UNIT IN COOPERATION WITH THE U.S. DEPARTMENT OF TRANSPORTATION FEDERAL HIGHWAY ADMINISTRATION

