

LEGEND

	ROAD		CABLE
	4 LANE UNDIVIDED HIGHWAY		RESERVATION OR PARK BOUNDARY
	DIVIDED HIGHWAY		INSET AREA
	FULL CONTROL ACCESS		FREE OR TOLL FERRY
	DETAILED HIGHWAY INTERCHANGE		CANAL
	ROAD THROUGH MOUNTAIN PASS		NARROW STREAM
	HIGHWAY BRIDGE		WIDE STREAM
	UNDERPASS		DAM WITH LOCK
	OVERPASS		DAM
	DRAW SPAN ON BRIDGE		RESERVOIR, POND, OR LAKE
	HIGHWAY TUNNEL		COUNTY SEAT
	FORD		COMMUNITY AND TOWN CENTER
	INTERSTATE HIGHWAY		SCHOOL
	U.S. NUMBERED HIGHWAY		COLLEGE OR UNIVERSITY
	N.C. NUMBERED HIGHWAY		HOSPITAL
	U.S. NUMBERED BICYCLE ROUTE		CHURCH
	N.C. NUMBERED BICYCLE ROUTE		CHURCH WITH CEMETERY
	INTERSTATE INTERCHANGE NUMBER		CEMETERY
	SECONDARY ROAD NUMBER		PARKGROUND OR RACETRACK
	RAILROAD ANY NUMBER OF TRACKS USED BY SINGLE OPERATING COMPANY		POST OFFICE
	RAILROAD ANY NUMBER OF TRACKS USED BY MORE THAN ONE OPERATING COMPANY OR ON SAME OR ADJACENT ROUTES OR WAY		POWER PLANT
	RAILROAD STATION		POWER SUBSTATION
	GRADE CROSSING		PATROL STATION
	UNDERPASS		CORRECTIONAL OR PENAL INST.
	OVERPASS		HIGHWAY DIV. OR MAINT. YARD
	RAILROAD TUNNEL		WEIGHT STATION
	RAILROAD BRIDGE		SWAMP OR MARSH
	UNINCORPORATED CENSUS DESIGNATED PLACE		GRAVEL PIT OR QUARRY
	CITY LIMIT		MONUMENT-SMALL HISTORICAL SITE
	COUNTY LINE		LIGHTHOUSE
	STATE LINE		MOUNTAIN PEAK
	INCORPORATED CITY OR VILLAGE		NAME
	INCORPORATED CITY OR VILLAGE		REST AREA
	INCORPORATED CITY OR VILLAGE		MUNICIPAL PARK
	INCORPORATED CITY OR VILLAGE		TRANSLOCATION STATION
	INCORPORATED CITY OR VILLAGE		STATE GUARD STATION
	INCORPORATED CITY OR VILLAGE		FEDERAL GAME LAND
	INCORPORATED CITY OR VILLAGE		MILITARY AIRFIELD
	INCORPORATED CITY OR VILLAGE		COMMERCIAL OR MUNICIPAL FIELD
	INCORPORATED CITY OR VILLAGE		HANGAR ON FIELD
	INCORPORATED CITY OR VILLAGE		LANDING STRIP
	INCORPORATED CITY OR VILLAGE		MARKED AIRWAY FIELD
	INCORPORATED CITY OR VILLAGE		WAREHOUSES OR MANUFACTURING PLANTS
	INCORPORATED CITY OR VILLAGE		SHIPPING CENTRES

FRANKLIN COUNTY

SUPPLEMENTAL LEGEND

	INTERSTATE
	FUTURE INTERSTATE
	FREEWAY / EXPRESSWAY
	FUTURE FREEWAY/EXPRESSWAY
	OTHER PRINCIPAL ARTERIAL
	FUTURE PRINCIPAL ARTERIAL
	MINOR ARTERIAL
	FUTURE MINOR ARTERIAL
	COLLECTOR
	FUTURE COLLECTOR
	EXISTING URBAN AREA
	SMOOTHED AREA

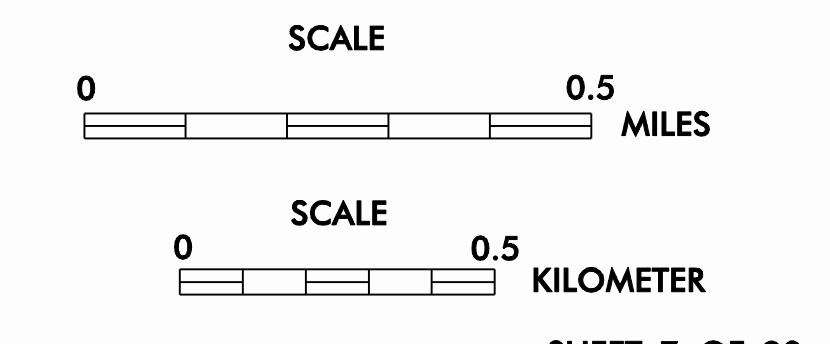
APPROVED BY FHWA/FEB. 14, 2006

CAMPO URBANIZED AREA

INCLUDED IN
WAKE AND FRANKLIN COUNTIES

NORTH CAROLINA

PREPARED BY
NORTH CAROLINA DEPARTMENT OF TRANSPORTATION
INFORMATION TECHNOLOGY - GIS UNIT
IN COOPERATION WITH THE
U.S. DEPARTMENT OF TRANSPORTATION
FEDERAL HIGHWAY ADMINISTRATION



Customized GIS map checked by P & A

Mapping

Road Inv.

REVISED