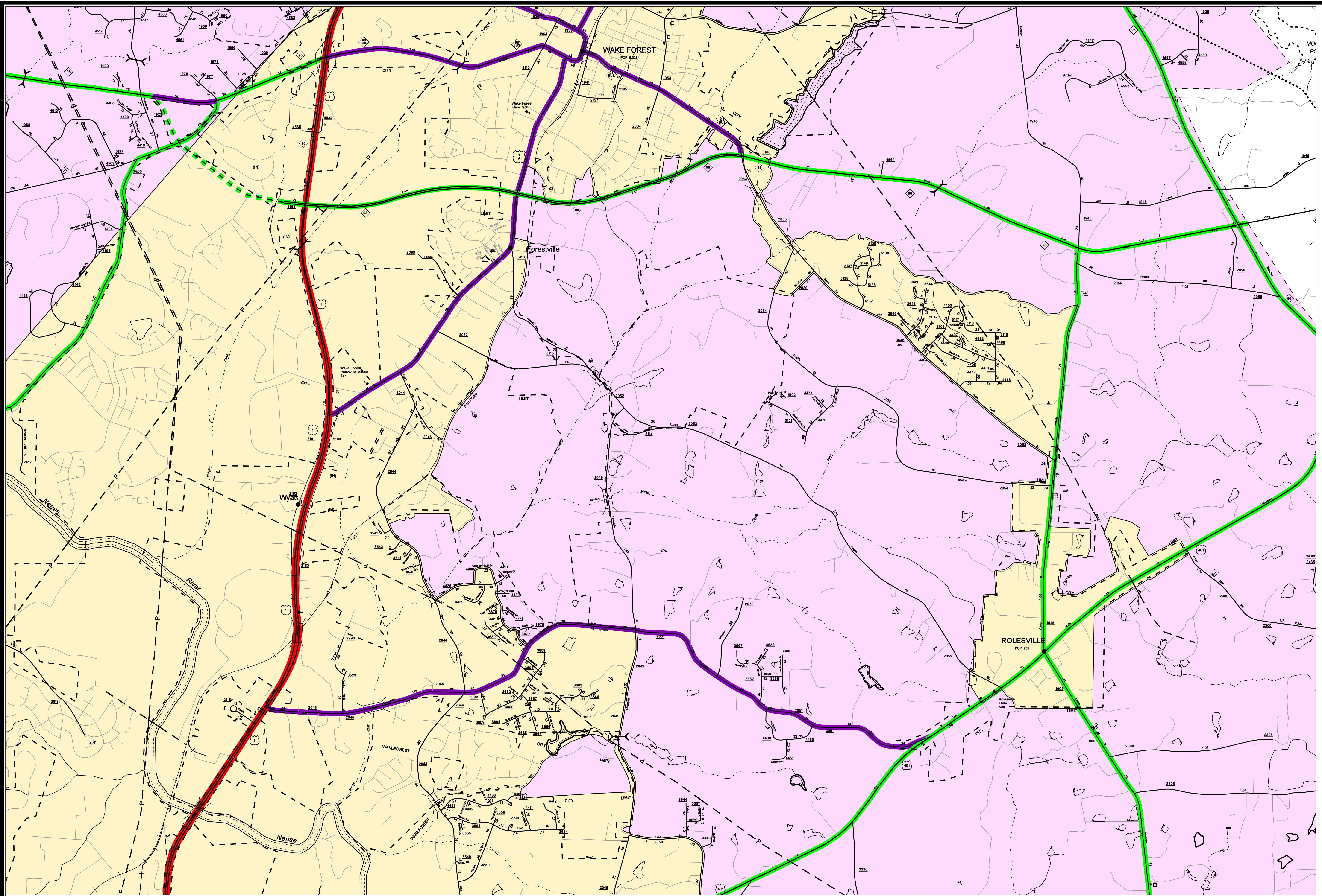


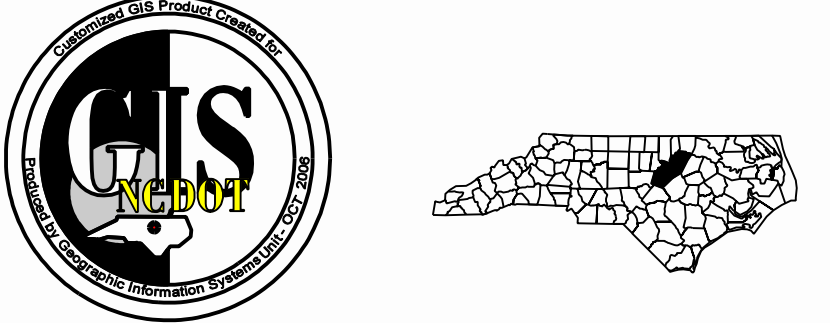
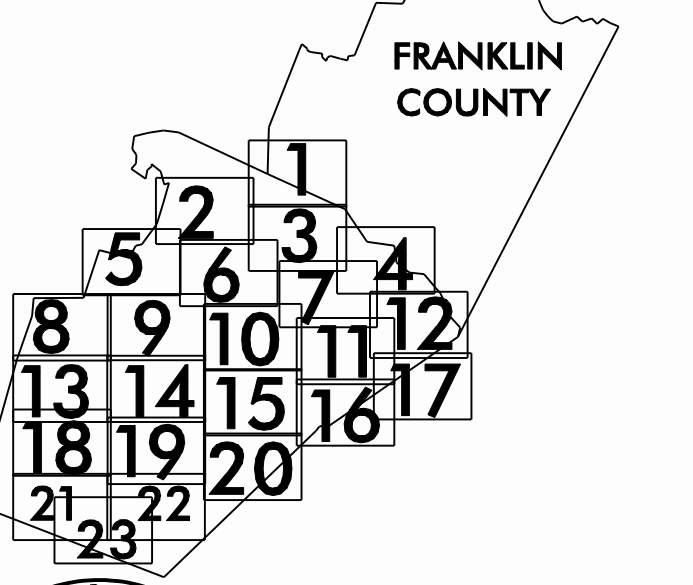
Disclaimer: Although the GIS Unit's goal is to provide the most correct and complete information as possible, the magnitude and dynamics of the data prevent any guarantee of accuracy or completeness. If you find any information that should be corrected, please send your request to the GIS Unit.

Customized GIS map checked by P & A  
 Mapping  
 Road Inv.  
 REVISED



### LEGEND

ROAD	4 LANE UNDIVIDED HIGHWAY	DIVIDED HIGHWAY	FCA	DETAILED HIGHWAY INTERCHANGE	ROAD THROUGH MOUNTAIN PASS	HIGHWAY BRIDGE	OVERPASS	DRAW SPAN ON BRIDGE	HIGHWAY TUNNEL	FORD	INTERSTATE HIGHWAY	U.S. NUMBERED HIGHWAY	U.S. NUMBERED BICYCLE ROUTE	U.S. NUMBERED BICYCLE ROUTE	INTERSTATE HIGHWAY NUMBER	SECONDARY ROAD NUMBER	RAILROAD ANY NUMBER OF TRACKS USED BY SINGLE OPERATING COMPANY	RAILROAD ANY NUMBER OF TRACKS USED BY MORE THAN ONE OPERATING COMPANY OR SAME OR ADJACENT ROUTES-CO-WAY	RAILROAD STATION	GRADE CROSSING	UNDERPASS	OVERPASS	RAILROAD TUNNEL	RAILROAD BRIDGE	UNINCORPORATED CENSUS DESIGNATED PLACE	CITY LIMIT	COUNTY LINE	STATE LINE	UNINCORPORATED CITY OR VILLAGE, (UNBARRIRED)	RESERVATION OR PARK BOUNDARY	INSET AREA	FREE OR TOLL FERRY	CANAL	NARROW STREAM	WIDE STREAM	DAM WITH LOCK	DAM	RESERVOIR, POND, OR LAKE	COUNTY SEAT	COUNTY AND TOWN CENTER	TOWN HALL	SCHOOL	COLLEGE OR UNIVERSITY	HOSPITAL	CHURCH	CHURCH WITH CEMETERY	CEMETERY	POST OFFICE	POWER PLANT	POWER SUBSTATION	PATROL STATION	COMMERCIAL OR RETAIL WHOLESALE HIGHWAY DIV. OR DIST. OFFICE	WRIGHT STATION	SWAMP OR MARSH	GRAVEL PIT OR QUARRY	MONUMENT-SMALL HISTORICAL SITE	LIGHTHOUSE	MOUNTAIN PEAK	NAME	REST AREA	MUNICIPAL PARK	TRANSPORTATION STATION	STATE GUARD STATION	JAIL	FEDERAL GAME LAND	MILITARY AIRFIELD	COMMERCIAL OR MUNICIPAL FIELD	HANGAR ON FIELD	LANDING STRIP	MARKED AIRWAY FIELD	WAREHOUSES OR MANUFACTURING PLANTS	SHOPPING CENTRES
------	--------------------------	-----------------	-----	------------------------------	----------------------------	----------------	----------	---------------------	----------------	------	--------------------	-----------------------	-----------------------------	-----------------------------	---------------------------	-----------------------	--	---	------------------	----------------	-----------	----------	-----------------	-----------------	--	------------	-------------	------------	--	------------------------------	------------	--------------------	-------	---------------	-------------	---------------	-----	--------------------------	-------------	------------------------	-----------	--------	-----------------------	----------	--------	----------------------	----------	-------------	-------------	------------------	----------------	---	----------------	----------------	----------------------	--------------------------------	------------	---------------	------	-----------	----------------	------------------------	---------------------	------	-------------------	-------------------	-------------------------------	-----------------	---------------	---------------------	------------------------------------	------------------



### SUPPLEMENTAL LEGEND

Blue dashed line	INTERSTATE
Blue solid line	FUTURE INTERSTATE
Red dashed line	FREEWAY / EXPRESSWAY
Red solid line	FUTURE FREEWAY/EXPRESSWAY
Green dashed line	OTHER PRINCIPAL ARTERIAL
Green solid line	FUTURE PRINCIPAL ARTERIAL
Yellow dashed line	MINOR ARTERIAL
Yellow solid line	FUTURE MINOR ARTERIAL
Purple dashed line	COLLECTOR
Purple solid line	FUTURE COLLECTOR
Yellow shaded area	EXISTING URBAN AREA
Pink shaded area	SMOOTHED AREA

APPROVED BY FHWA FEB. 14, 2006

## CAMPO URBANIZED AREA

INCLUDED IN  
 WAKE AND FRANKLIN COUNTIES  
 NORTH CAROLINA

PREPARED BY  
 NORTH CAROLINA DEPARTMENT OF TRANSPORTATION  
 INFORMATION TECHNOLOGY - GIS UNIT  
 IN COOPERATION WITH THE  
 U.S. DEPARTMENT OF TRANSPORTATION  
 FEDERAL HIGHWAY ADMINISTRATION

