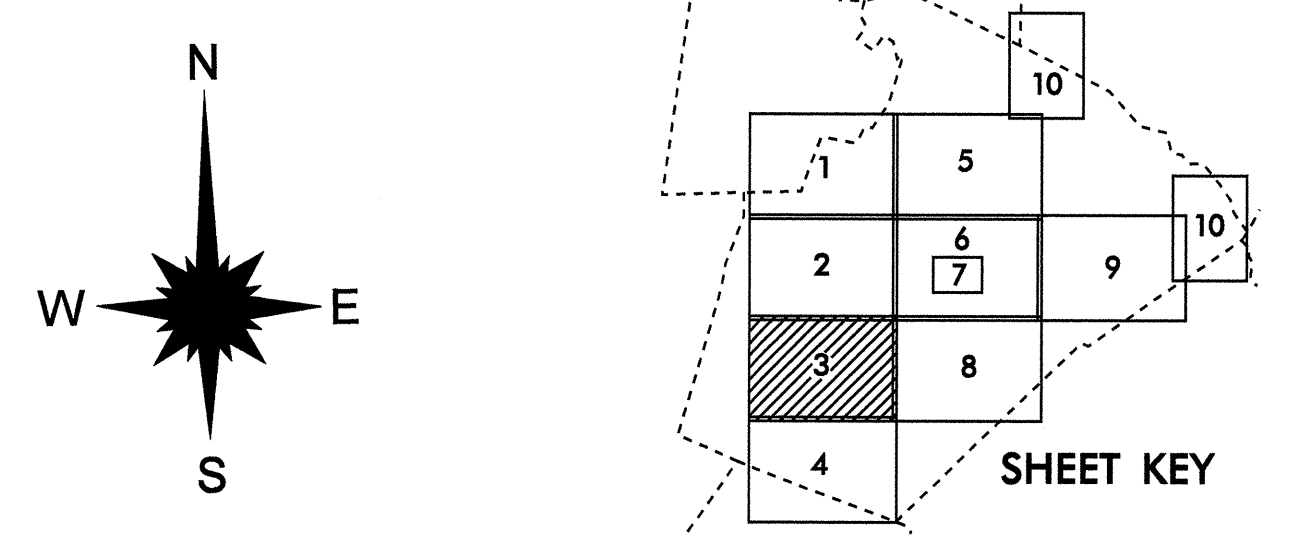


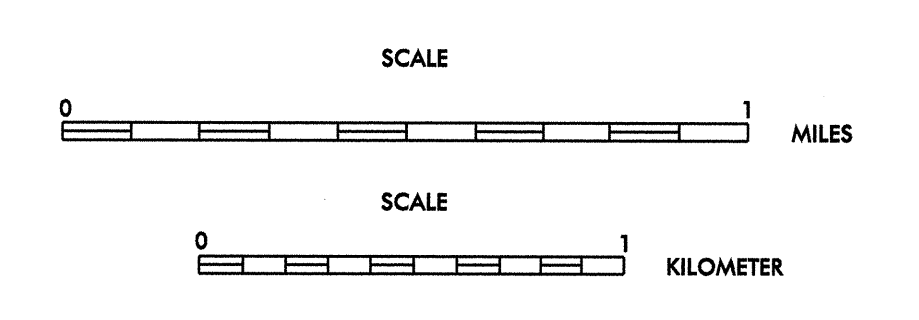
- LEGEND**
- ROAD 4 LANE UNDIVIDED HIGHWAY
  - DIVIDED HIGHWAY
  - FCA FULL CONTROL ACCESS
  - DETAILED HIGHWAY INTERCHANGE
  - ROAD THROUGH MOUNTAIN PASS
  - HIGHWAY BRIDGE
  - UNDERPASS
  - OVERPASS
  - DRAW SPAN ON BRIDGE
  - HIGHWAY TUNNEL
  - FORD
  - INTERSTATE HIGHWAY
  - U.S. NUMBERED HIGHWAY
  - N.C. NUMBERED HIGHWAY
  - U.S. NUMBERED BICYCLE ROUTE
  - N.C. NUMBERED BICYCLE ROUTE
  - INTERSTATE INTERCHANGE NUMBER
  - SECONDARY ROAD NUMBER
  - RAILROAD ANY NUMBER OF TRACKS USED BY SINGLE OPERATING COMPANY
  - RAILROAD ANY NUMBER OF TRACKS USED BY MORE THAN ONE OPERATION COMPANY ON SAME OR ADJACENT RIGHTS-OF-WAY
  - RAILROAD STATION
  - GRADE CROSSING
  - UNDERPASS
  - OVERPASS
  - RAILROAD TUNNEL
  - RAILROAD BRIDGE
  - UNINCORPORATED CENSUS DESIGNATED PLACE
  - CITY LIMIT
  - STATE LINE
  - INCORPORATED CITY OR VILLAGE (GENERALIZED)
  - CABLE
  - RESERVATION OR PARK BOUNDARY
  - INSET AREA
  - FREE OR TOLL FERRY
  - CANAL
  - NARROW STREAM
  - WIDE STREAM
  - DAM WITH LOCK
  - DAM
  - RESERVOIR, POND, OR LAKE
  - COUNTY SEAT
  - COMMUNITY AND TOWN CENTER
  - TOWN HALL
  - SCHOOL
  - COLLEGE OR UNIVERSITY
  - HOSPITAL
  - CHURCH
  - CHURCH WITH CEMETERY
  - CEMETERY
  - FAIRGROUND OR RACETRACK
  - POST OFFICE
  - POWER SUBSTATION
  - PATROL STATION
  - CORRECTIONAL OR PENAL INSTN.
  - HIGHWAY GARAGE OR MAINT. YARD
  - HIGHWAY DIV. OR DIST. OFFICE
  - WEIGHT STATION
  - SWAMP OR MARSH
  - GRAVEL PIT OR QUARRY
  - MONUMENT-SMALL HISTORICAL SITE
  - LIGHTHOUSE
  - MOUNTAIN PEAK
  - MINE
  - BEST AREA
  - MUNICIPAL PARK
  - TRIANGULATION STATION
  - COAST GUARD STATION
  - ADWARY
  - FEDERAL GAME LAND
  - MILITARY AIRFIELD
  - COMMERCIAL OR MUNICIPAL FIELD
  - HANGAR ON FIELD
  - LANDING STRIP
  - MARKED AUXILIARY FIELD
  - WAREHOUSES OR MANUFACTURING PLANTS
  - SHOPPING CENTERS



**2009**  
**ANNUAL AVERAGE**  
**DAILY TRAFFIC**  
 GENERATED BY THE  
**TRAFFIC SURVEY GROUP**  
 TRANSPORTATION PLANNING BRANCH  
**RALEIGH**  
 INCLUDED IN  
 WAKE COUNTY  
**NORTH CAROLINA**

BASE MAPPING PREPARED BY  
**NORTH CAROLINA DEPARTMENT OF TRANSPORTATION**  
 STATE ROAD MAINTENANCE UNIT  
 MAPPING & INFORMATION SECTION

IN COOPERATION WITH THE  
**U.S. DEPARTMENT OF TRANSPORTATION**  
 FEDERAL HIGHWAY ADMINISTRATION



SHEET 3 OF 10

BASE MAP  
REVISED  
AUG 2009