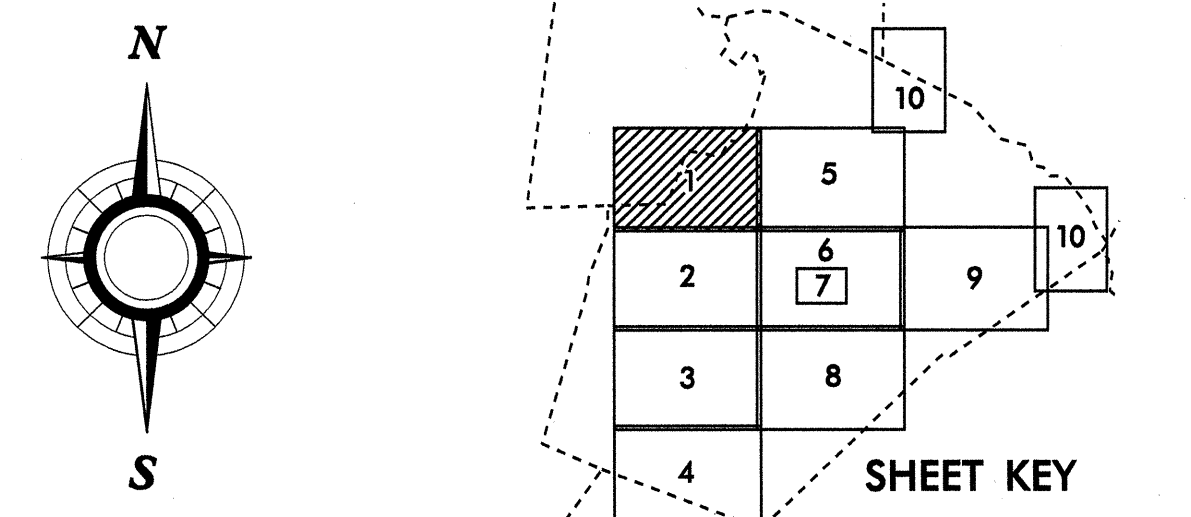




LEGEND

ROAD	4 LANE UNDIVIDED HIGHWAY	TELEPHONE	CABLE
ROAD	DIVIDED HIGHWAY	RES. PARK BOT.	RESERVATION OR PARK BOUNDARY
FCA	FULL CONTROL ACCESS		INSET AREA
	DETAILED HIGHWAY INTERCHANGE		FREE OR TOLL FERRY
	ROAD THROUGH MOUNTAIN PASS		CANAL
	HIGHWAY BRIDGE		NARROW STREAM
	UNDERPASS		WIDE STREAM
	OVERPASS		DAM WITH LOCK
	DRAW SPAN ON BRIDGE		DAM
	HIGHWAY TUNNEL		RESERVOIR, POND, OR LAKE
	FORD		COUNTY SEAT
	INTERSTATE HIGHWAY		COMMUNITY AND TOWN CENTER
	U.S. NUMBERED HIGHWAY		TOWN HALL
	N.C. NUMBERED HIGHWAY		COLLEGE OR UNIVERSITY
	U.S. NUMBERED BICYCLE ROUTE		HOSPITAL
	N.C. NUMBERED BICYCLE ROUTE		CHURCH WITH CEMETERY
	INTERSTATE INTERCHANGE NUMBER		CEMETERY
	SECONDARY ROAD NUMBER		PARKGROUND OR RACETRACK
	RAILROAD, ANY NUMBER OF TRACKS USED BY SINGLE OPERATING COMPANY		POST OFFICE
	RAILROAD, ANY NUMBER OF TRACKS USED BY MORE THAN ONE OPERATING COMPANY ON SAME OR ADJACENT RIGHTS-OF-WAY		POWER PLANT
	RAILROAD STATION		POWER SUBSTATION
	GRADE CROSSING		PATROL STATION
	OVERPASS		CORRECTIONAL OR PENAL INSTN.
	RAILROAD TUNNEL		HIGHWAY GARAGE OR MAINT. YARD
	RAILROAD BRIDGE		USED BY MORE THAN ONE OPERATION COMPANY ON SAME OR ADJACENT RIGHTS-OF-WAY
	UNINCORPORATED CENSUS DESIGNATED PLACE		WEIGHT STATION
	CITY LIMIT		SWAMP OR MARSH
	COUNTY LINE		GRAVEL PIT OR QUARRY
	STATE LINE		MONUMENT-SMALL HISTORICAL SITE
	INCORPORATED CITY OR VILLAGE, (GENERALIZED)		LIGHTHOUSE
			MOUNTAIN PEAK
			MINE
			REST AREA
			MUNICIPAL PARK
			TRIANGULATION STATION
			COAST GUARD STATION
			ARMORY
			FEDERAL GAME LAND
			MILITARY AIRFIELD
			COMMERCIAL OR MUNICIPAL FIELD
			HANGAR ON FIELD
			LANDING STRIP
			MARKED AUXILIARY FIELD
			WAREHOUSES OR MANUFACTURING PLANTS
			SHOPPING CENTERS



2007

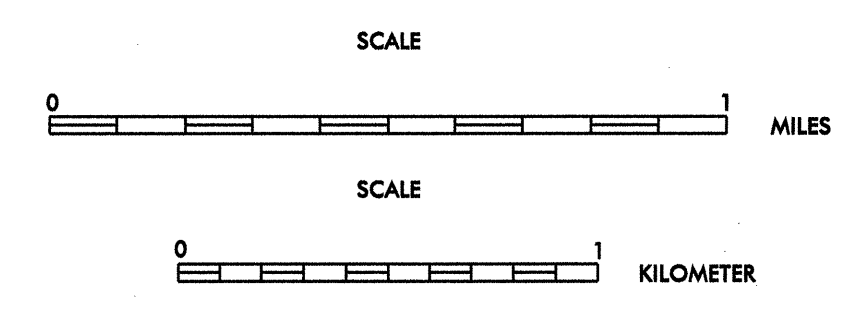
# ANNUAL AVERAGE DAILY TRAFFIC

PREPARED BY  
**TRAFFIC SURVEY GROUP**  
**RALEIGH**

INCLUDED IN  
WAKE COUNTY

## NORTH CAROLINA

PREPARED BY  
NORTH CAROLINA DEPARTMENT OF TRANSPORTATION  
INFORMATION TECHNOLOGY - IMG UNIT  
IN COOPERATION WITH THE  
U.S. DEPARTMENT OF TRANSPORTATION  
FEDERAL HIGHWAY ADMINISTRATION



JULY, 2007

SHEET 1 OF 10

SHEET 1 OF 10