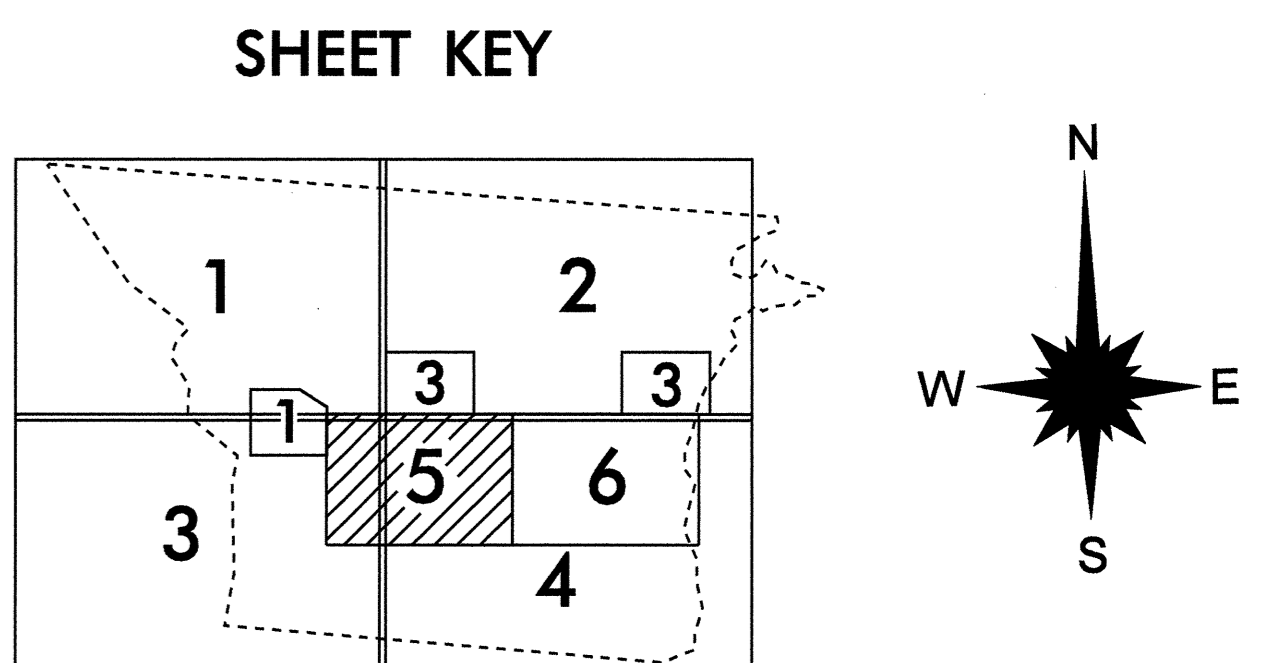


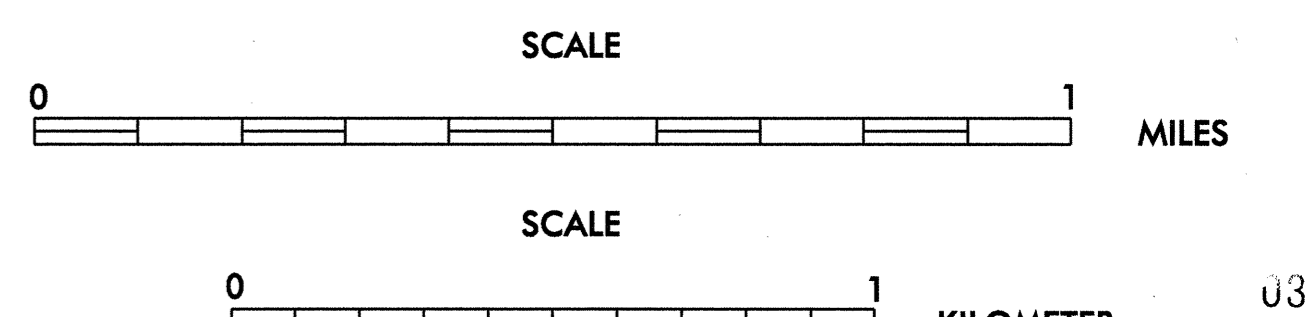
LEGEND

	ROAD		CABLE
	4 LANE UNDIVIDED HIGHWAY		RESERVATION OR PARK BOUNDARY
	DIVIDED HIGHWAY		INSET AREA
	FULL CONTROL ACCESS		FREE OR TOLL FERRY
	DETAILED HIGHWAY INTERCHANGE		CANAL
	ROAD THROUGH MOUNTAIN PASS		NARROW STREAM
	HIGHWAY BRIDGE		WIDE STREAM
	UNDERPASS		DAM WITH LOCK
	OVERPASS		DAM
	DRAW SPAN ON BRIDGE		RESERVOIR, POND, OR LAKE
	HIGHWAY TUNNEL		COUNTY SEAT
	FORD		COMMUNITY AND TOWN CENTER
	INTERSTATE HIGHWAY		TOWN HALL
	U.S. NUMBERED HIGHWAY		SCHOOL
	N.C. NUMBERED HIGHWAY		COLLEGE OR UNIVERSITY
	U.S. NUMBERED BICYCLE ROUTE		HOSPITAL
	N.C. NUMBERED BICYCLE ROUTE		CHURCH
	INTERSTATE INTERCHANGE NUMBER		CHURCH WITH CEMETERY
	SECONDARY ROAD NUMBER		CEMETERY
	RAILROAD ANY NUMBER OF TRACKS USED BY SINGLE OPERATING COMPANY		FAIRGROUND OR RACETRACK
	RAILROAD ANY NUMBER OF TRACKS USED BY MORE THAN ONE OPERATING COMPANY ON SAME OR ADJACENT RIGHTS-OF-WAY		POST OFFICE
	RAILROAD STATION		POWER PLANT
	GRADE CROSSING		PATROL STATION
	UNDERPASS		CORRECTIONAL OR PENAL INSTN.
	OVERPASS		HIGHWAY DIV. OR MAINT. YARD
	RAILROAD TUNNEL		HIGHWAY DIV. OR DIST. OFFICE
	RAILROAD BRIDGE		WEIGHT STATION
	UNINCORPORATED CENSUS DESIGNATED PLACE		SWAMP OR MARSH
	CITY LIMIT		GRAVEL PIT OR QUARRY
	COUNTY LINE		MONUMENT-SMALL HISTORICAL SITE
	STATE LINE		LIGHTHOUSE
	INCORPORATED CITY OR VILLAGE (GENERALIZED)		MOUNTAIN PEAK
			MINE
			REST AREA
			MUNICIPAL PARK
			TRIANGULATION STATION
			COAST GUARD STATION
			AIRPORT
			FEDERAL GAME LAND
			MILITARY AIRFIELD
			COMMERCIAL OR MUNICIPAL FIELD
			HANGAR ON FIELD
			LANDING STRIP
			MARKED AUXILIARY FIELD
			WAREHOUSES OR MANUFACTURING PLANTS
			SHOPPING CENTERS



2008
ANNUAL AVERAGE
DAILY TRAFFIC
 GENERATED BY THE
TRAFFIC SURVEY GROUP
TRANSPORTATION PLANNING BRANCH

GASTONIA
 INCLUDED IN
 GASTON COUNTY
NORTH CAROLINA
 BASE MAPPING PREPARED BY
NORTH CAROLINA DEPARTMENT OF TRANSPORTATION
STATE ROAD MAINTENANCE UNIT
MAPPING & INFORMATION SECTION
 IN COOPERATION WITH THE
U.S. DEPARTMENT OF TRANSPORTATION
FEDERAL HIGHWAY ADMINISTRATION



1" = 1000' = 304.8m

SHEET 5 OF 6

BASE MAP
REVISED
MAY 2009

SHEET 5 OF 6