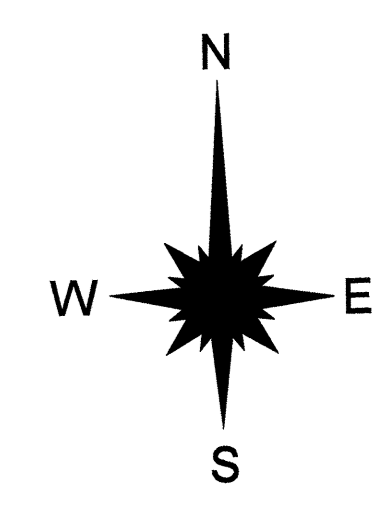
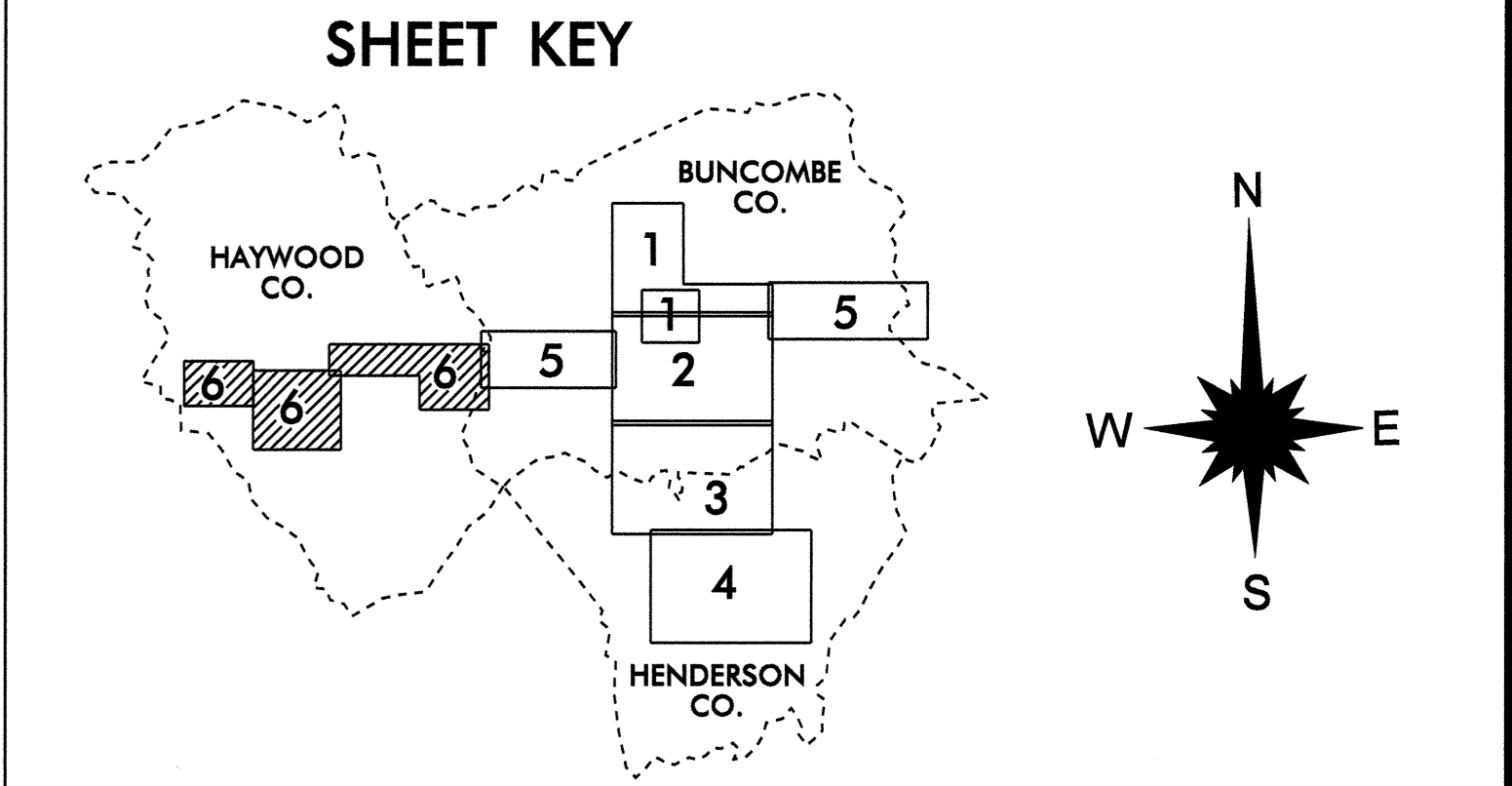




**LEGEND**

ROAD	4 LANE UNDIVIDED HIGHWAY	TELE-ELECT/PPIPE	CABLE
DIVIDED HIGHWAY	FULL CONTROL ACCESS	RES. PARK BLD.	RESERVOIR OR PARK BOUNDARY
DETAILED HIGHWAY INTERCHANGE	ROAD THROUGH MOUNTAIN PASS		INSET AREA
HIGHWAY BRIDGE	UNDERPASS		FREE OR TOLL FERRY
OVERPASS	DRAW SPAN ON BRIDGE		CANAL
HIGHWAY TUNNEL	FORD		NARROW STREAM
INTERSTATE HIGHWAY	U.S. NUMBERED HIGHWAY		WIDE STREAM
U.S. NUMBERED HIGHWAY	N.C. NUMBERED HIGHWAY		DAM WITH LOCK
U.S. NUMBERED BICYCLE ROUTE	INTERSTATE INTERCHANGE NUMBER		DAM
N.C. NUMBERED BICYCLE ROUTE	SECONDARY ROAD NUMBER		RESERVOIR, POND, OR LAKE
RAILROAD, ANY NUMBER OF TRACKS USED BY SINGLE OPERATING COMPANY	RAILROAD, ANY NUMBER OF TRACKS USED BY MORE THAN ONE OPERATION COMPANY ON SAME OR ADJACENT RIGHTS-OF-WAY		COUNTY SEAT
RAILROAD STATION	RAILROAD BRIDGE		COMMUNITY AND TOWN CENTER
GRADE CROSSING	UNDERPASS		TOWN HALL
OVERPASS	RAILROAD TUNNEL		SCHOOL
UNINCORPORATED CENSUS DESIGNATED PLACE	CITY LIMIT		COLLEGE OR UNIVERSITY
COUNTY LINE	STATE LINE		HOSPITAL
INCORPORATED CITY OR VILLAGE, (GENERALIZED)			CHURCH
			CHURCH WITH CEMETERY
			CEMETERY
			FAIRGROUND OR RACETRACK
			POST OFFICE
			POWER PLANT
			PATROL STATION
			CORRECTIONAL OR PENAL INSTN.
			HIGHWAY GARAGE OR MAINT. YARD
			HIGHWAY DIV. OR DIST. OFFICE
			WEIGHT STATION
			SWAMP OR MARSH
			GRAVEL PIT OR QUARRY
			MONUMENT-SMALL HISTORICAL SITE
			LIGHTHOUSE
			MOUNTAIN PEAK
			MINE
			REST AREA
			MUNICIPAL PARK
			TRIANGULATION STATION
			COAST GUARD STATION
			ARMORY
			FEDERAL GAME LAND
			MILITARY AIRFIELD
			COMMERCIAL OR MUNICIPAL FIELD
			HANGAR ON FIELD
			LANDING STRIP
			MARKED AUXILIARY FIELD
			WAREHOUSES OR MANUFACTURING PLANTS
			SHOPPING CENTERS

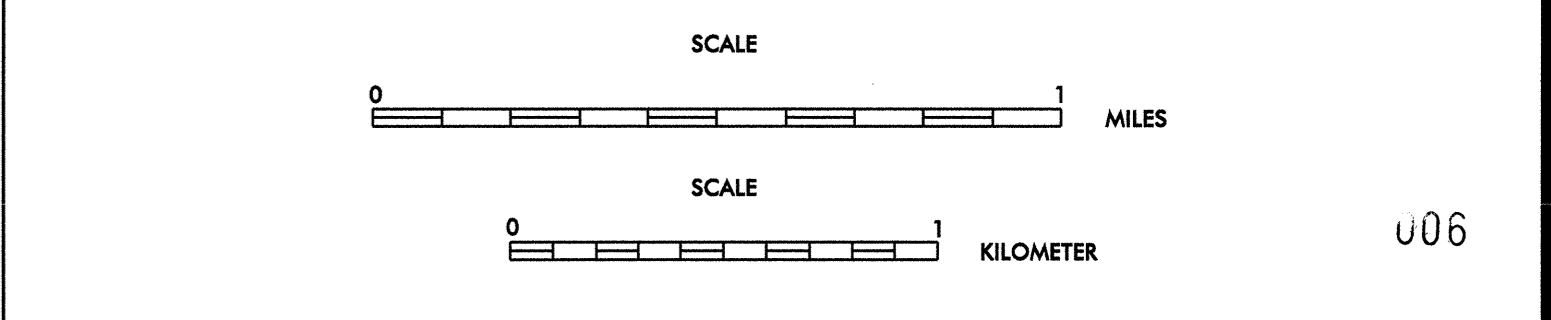


**2008 ANNUAL AVERAGE DAILY TRAFFIC**  
 GENERATED BY THE  
**TRAFFIC SURVEY GROUP**  
 TRANSPORTATION PLANNING BRANCH

**ASHEVILLE**  
 INCLUDED IN  
 HAYWOOD COUNTY  
**NORTH CAROLINA**

BASE MAPPING PREPARED BY  
 NORTH CAROLINA DEPARTMENT OF TRANSPORTATION  
 STATE ROAD MAINTENANCE UNIT  
 MAPPING & INFORMATION SECTION

IN COOPERATION WITH THE  
 U.S. DEPARTMENT OF TRANSPORTATION  
 FEDERAL HIGHWAY ADMINISTRATION



1" = 1500' = 457.2m

SHEET 6 OF 6

BASE MAP  
 REVISED  
 APRIL 2009

U06

SHEET 6 OF 6