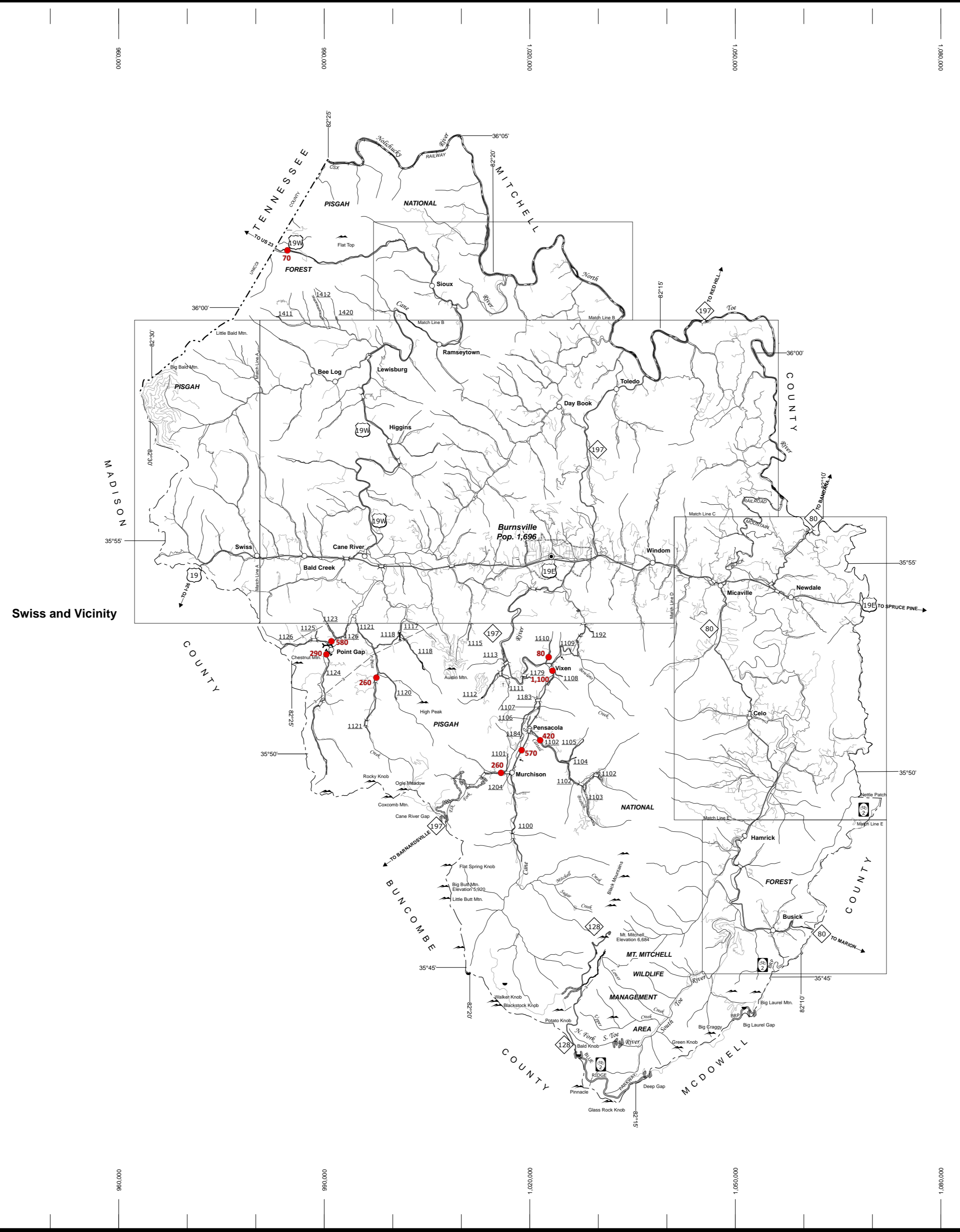
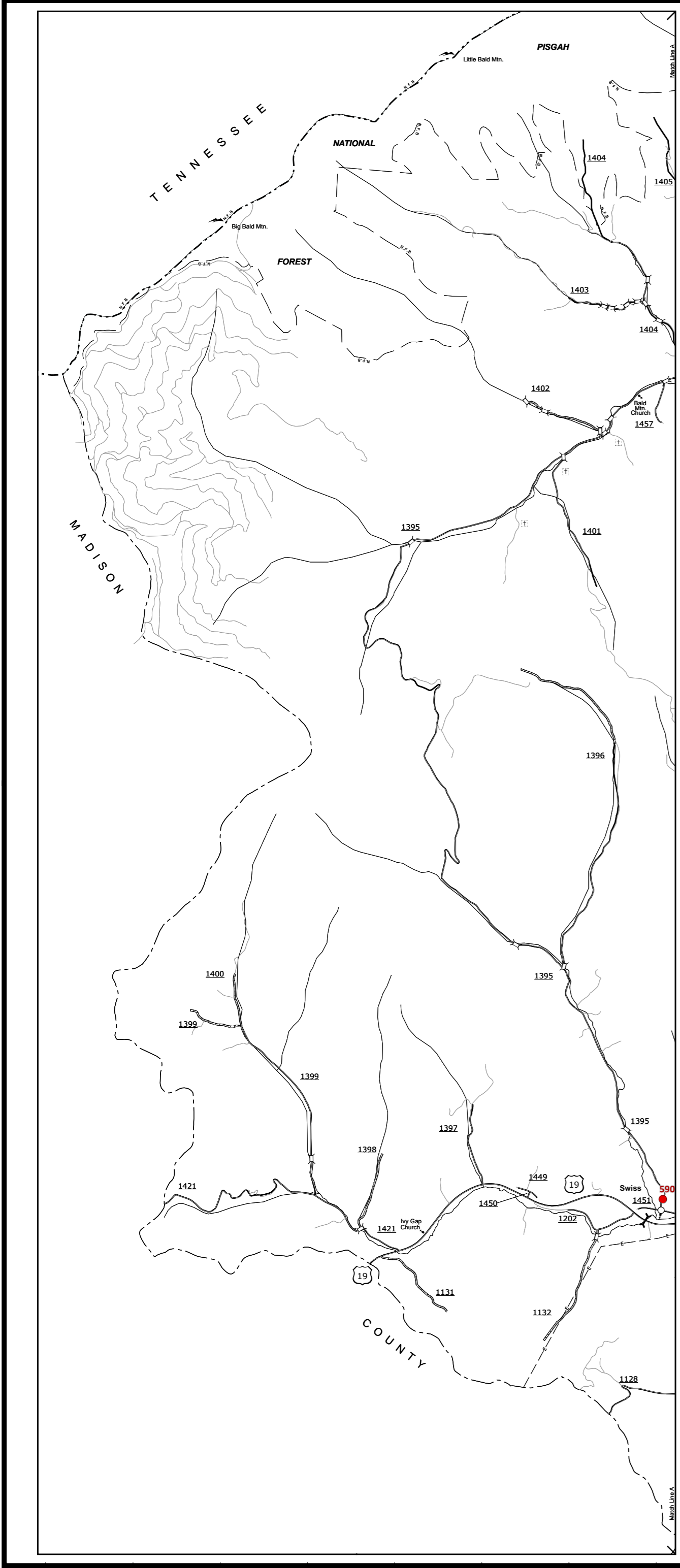


The MSAG's goal is to provide the most accurate and current information possible. Map data is compiled from various sources and is subject to change. Accuracy, currency and completeness of the data provided will vary. Map includes state-maintained roads. The information shown on this map was last updated on August, 2017. For additional information, visit <http://www.ncdot.gov/transportation/MSAG> and click on Data Providers or contact us at (919) 835-6480.

CUSTOMERS WHO USE THIS MAP ARE AVAILABLE TO THE PUBLIC AT AN ANNUAL COST. ADDRESS: N.C. DEPARTMENT OF TRANSPORTATION MSAG - MAPPING SECTION RALEIGH, NC 27608



LEGEND

- UNPAVED SURFACED ROAD
- HARD SURFACED ROAD
- 4-LANE UNDIVIDED HIGHWAY
- DIVIDED HIGHWAY INSET
- DIVIDED HIGHWAY W/FRONTAGE ROADS
- FULL CONTROL ACCESS
- NON-SYSTEM ROADS
- PROJECTED LOCATION
- NATIONAL PARK ROAD
- BLUE RIDGE PARKWAY
- INTERSECTION DISTANCE
- TRAFFIC CIRCLE
- DETAILED HIGHWAY INTERCHANGE
- ROAD THROUGH MOUNTAIN PASS
- HIGHWAY BRIDGE
- UNDERPASS
- OVERPASS
- DRAW SPAN ON BRIDGE
- HIGHWAY TUNNEL
- FORD
- INTERSTATE HIGHWAY
- U.S. NUMBERED HIGHWAY
- N.C. NUMBERED HIGHWAY
- U.S. NUMBERED BICYCLE ROUTE
- N.C. NUMBERED BICYCLE ROUTE
- INTERSTATE INTERCHANGE NUMBER
- SECONDARY ROAD NUMBER
- UTILITY LINE
- RAILROAD
- RAILROAD STATION
- GRADE CROSSING
- INSET AREA
- URBAN EXTENSION LINE
- NATIONAL FOREST BOUNDARY
- RESERVATION OR PARK BOUNDARY
- STATE FOREST BOUNDARY
- STATE GAMLAND BOUNDARY
- FEDERAL GAMLAND BOUNDARY
- MILITARY RESERVATION BOUNDARY
- STATE LINE
- COUNTY LINE
- CITY LIMIT
- FERRY ROUTE
- CANAL
- NARROW CREEK OR STREAM
- WIDE RIVER OR CREEK
- RESERVOIR, POND OR LAKE W/ ISLAND
- DAM OR DAM WITH LOCK
- WATERFALL
- SWAMP
- COMMUNITY, TOWN OR CITY CENTER
- COUNTY SEAT
- STATE CAPITAL
- SCHOOL
- COLLEGE OR UNIVERSITY
- HOSPITAL
- COAST GUARD STATION
- CHURCH
- CHURCH WITH CEMETERY
- CEMETERY
- PATROL STATION
- CORRECTION OR PENAL INSTITUTION
- QUARRY
- MINE OR PIT
- HIGHWAY GARAGE OR MAINT. YARD
- HIGHWAY DIV. OR DIST. OFFICE
- POST OFFICE
- MILITARY POST
- WILDLIFE REFUGE
- WEIGH STATION
- FAIRGROUNDS
- HISTORICAL SITE
- POINTS OF INTEREST
- STATE FOREST
- LIGHTHOUSE
- MOUNTAIN GAP
- MOUNTAIN SUMMIT
- OVERLOOK
- GEODETIC MARKER
- REST AREA
- VISITOR CTR/REST AREA
- WELCOME CTR/REST AREA
- MAJOR AIRPORT
- MILITARY AIRPORT
- HELIPORT

2016 AADT
ANNUAL AVERAGE DAILY TRAFFIC
GENERATED BY THE
TRAFFIC SURVEY GROUP
TRANSPORTATION PLANNING BRANCH

YANCEY COUNTY
NORTH CAROLINA

PREPARED BY THE
NORTH CAROLINA DEPARTMENT OF TRANSPORTATION
MANAGEMENT SYSTEMS AND ASSESSMENTS UNIT - MAPPING SECTION
IN COOPERATION WITH THE
U.S. DEPARTMENT OF TRANSPORTATION
FEDERAL HIGHWAY ADMINISTRATION

SCALE

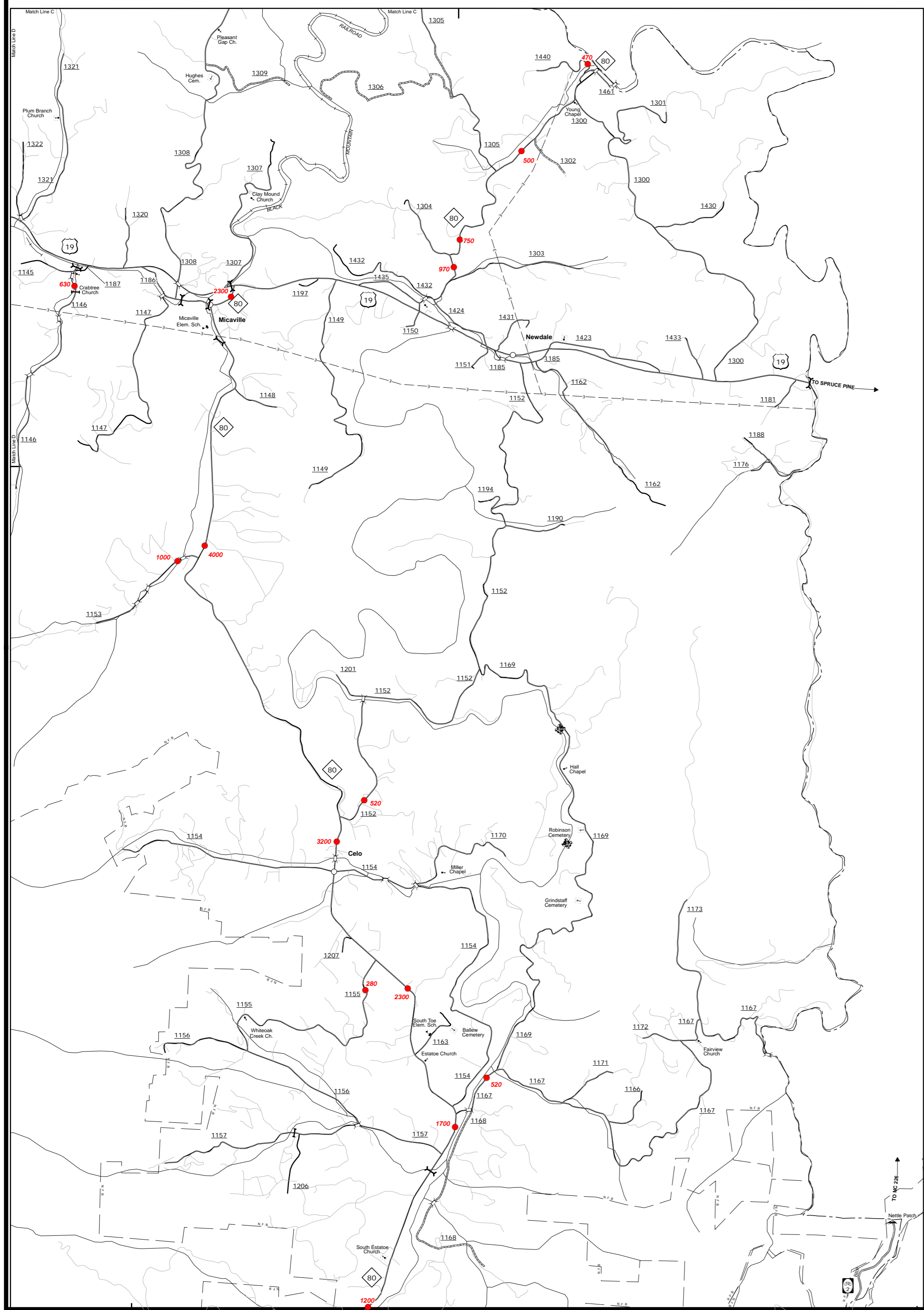
1 0 1 2 3 4
MILES

0 0.5 1
MILES

SCALE FOR ENLARGEMENTS

10,000 FOOT GRID BASED ON NORTH CAROLINA PLANE COORDINATE SYSTEM
LAMBERT CONFORMAL CONIC PROJECTION

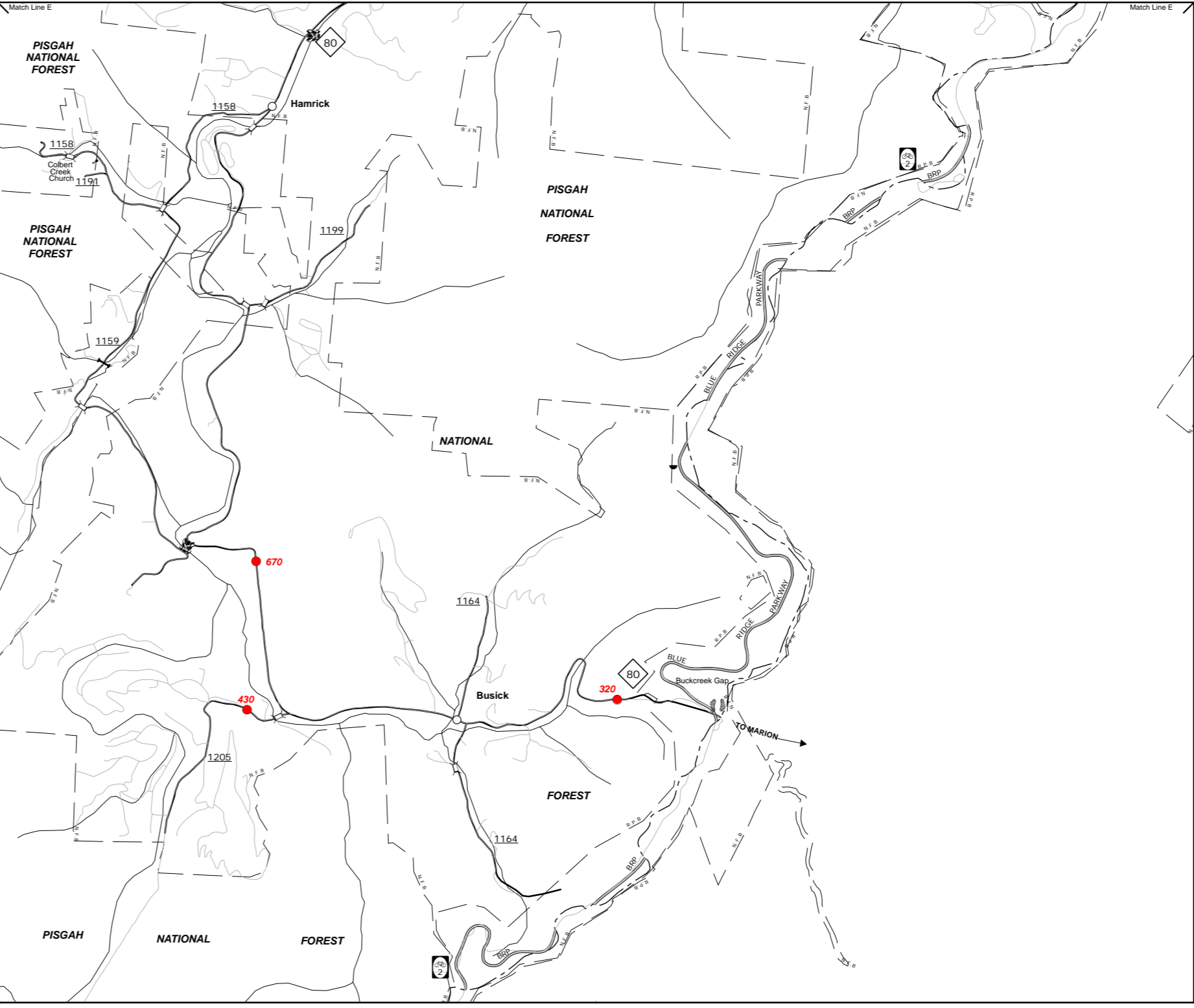
SHEET 1 OF 3



Celo, Newdale, Micaville and Vicinity



Sioux



Hamrick & Busick

The NSAU's goal is to provide the most accurate and current information possible. Map data is compiled from various sources and is not guaranteed to be 100% accurate. The accuracy of the data provided will vary. Map includes state-maintained roads and important non-system roads. Data was last updated on August, 2017. For additional information, visit the NSAU website at www.ncdot.gov/transportation-planning or contact us at (919) 855-8480.

2016 AADT
 ANNUAL AVERAGE DAILY TRAFFIC
 GENERATED BY THE
TRAFFIC SURVEY GROUP
 TRANSPORTATION PLANNING BRANCH
 ENLARGED MUNICIPAL AND SUBURBAN AREAS
YANCEY COUNTY
 NORTH CAROLINA
 PREPARED BY THE
 NORTH CAROLINA DEPARTMENT OF TRANSPORTATION
 MANAGEMENT SYSTEMS AND ASSESSMENTS UNIT - MAPPING SECTION
 IN COOPERATION WITH THE
 U.S. DEPARTMENT OF TRANSPORTATION
 FEDERAL HIGHWAY ADMINISTRATION

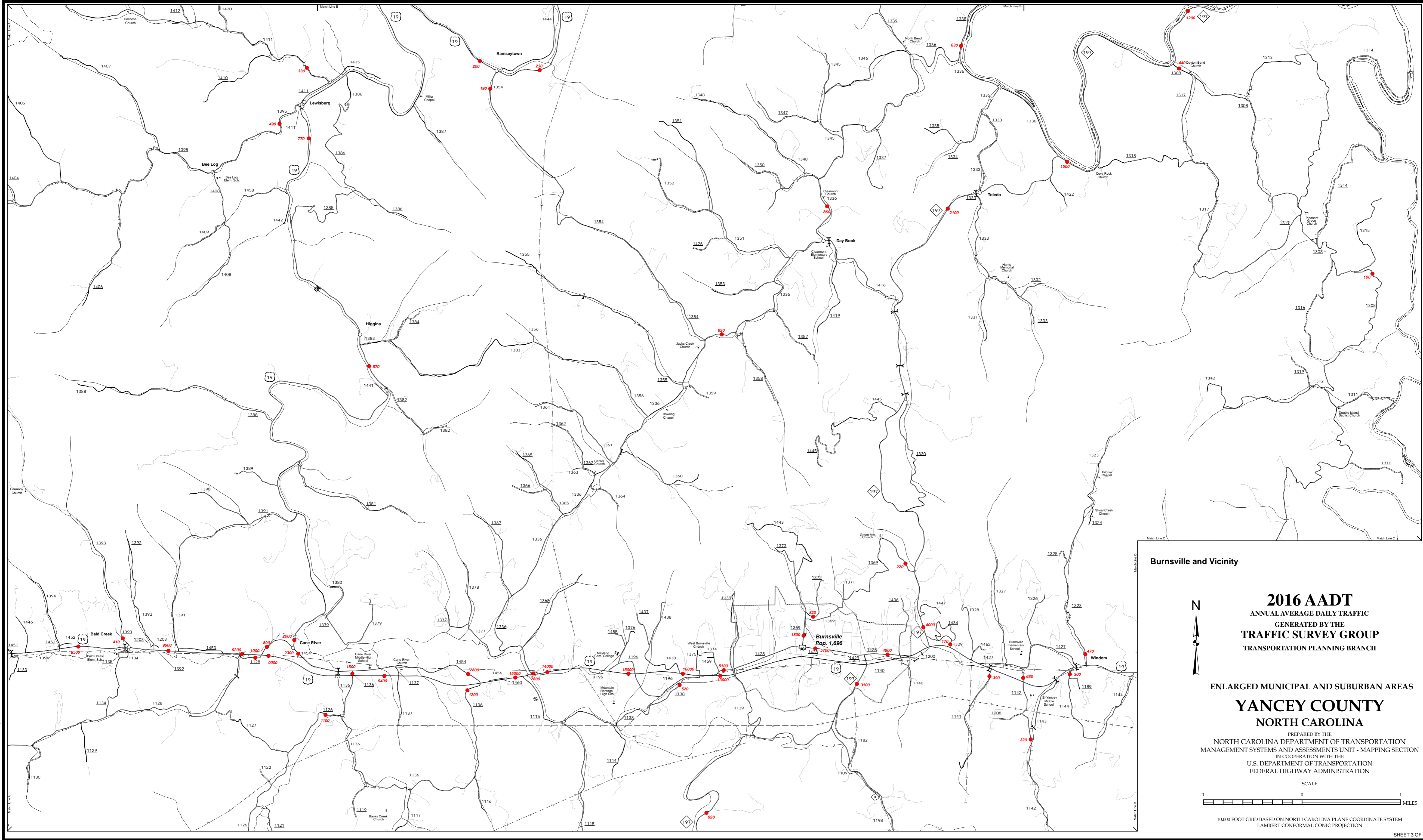
SCALE

1 0 1
MILES

10,000 FOOT GRID BASED ON NORTH CAROLINA PLANE COORDINATE SYSTEM
 LAMBERT CONFORMAL CONIC PROJECTION

The MSAL's goal is to provide the most accurate and current information possible. Map data is compiled from various sources and is subject to change. Accuracy, currency and completeness of the data provided will vary. Map includes state-maintained roads and important non-system roads. Data was last updated on August, 2017. For additional information, visit <http://www.ncdot.gov/transportation/MSAL> and click on Data Providers or contact us at (818) 835-8480.

COPIES OF THIS MAP ARE AVAILABLE AT NO CHARGE TO THE PUBLIC AT NO CHARGE. ADDRESS: N.C. DEPARTMENT OF TRANSPORTATION MSAL - MAPPING SECTION 4908 BERTHOLD ROAD, RALEIGH, NC 27606



Burnsville and Vicinity

2016 AADT
ANNUAL AVERAGE DAILY TRAFFIC
GENERATED BY THE
TRAFFIC SURVEY GROUP
TRANSPORTATION PLANNING BRANCH

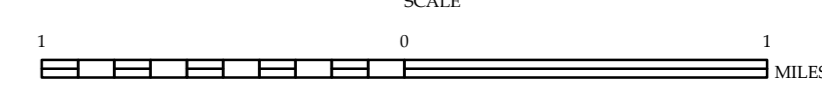
ENLARGED MUNICIPAL AND SUBURBAN AREAS
YANCEY COUNTY
NORTH CAROLINA

PREPARED BY THE
NORTH CAROLINA DEPARTMENT OF TRANSPORTATION
MANAGEMENT SYSTEMS AND ASSESSMENTS UNIT - MAPPING SECTION
IN COOPERATION WITH THE
U.S. DEPARTMENT OF TRANSPORTATION
FEDERAL HIGHWAY ADMINISTRATION

SCALE
0 1 2 MILES

10,000 FOOT GRID BASED ON NORTH CAROLINA PLANE COORDINATE SYSTEM
LAMBERT CONFORMAL CONIC PROJECTION

SHEET 3 OF 3



10,000 FOOT GRID BASED ON NORTH CAROLINA PLANE COORDINATE SYSTEM
LAMBERT CONFORMAL CONIC PROJECTION