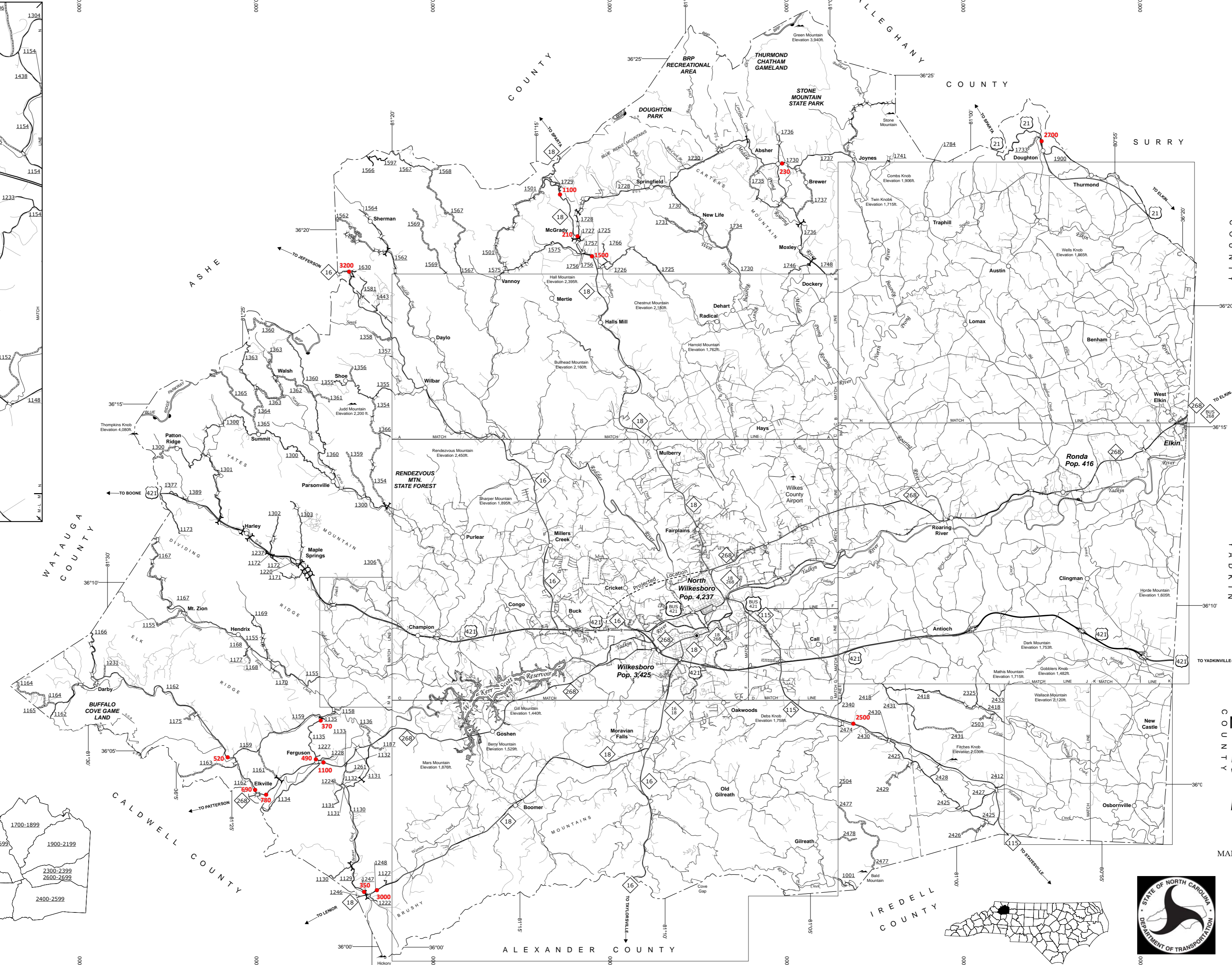
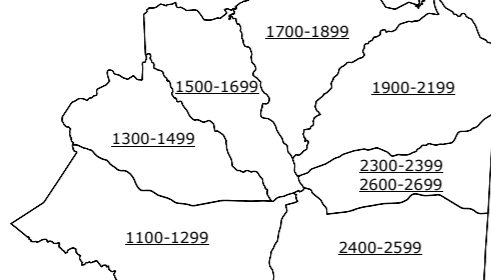
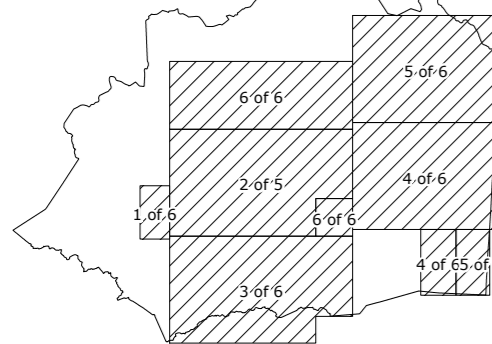


Lewis Fork and Vicinity

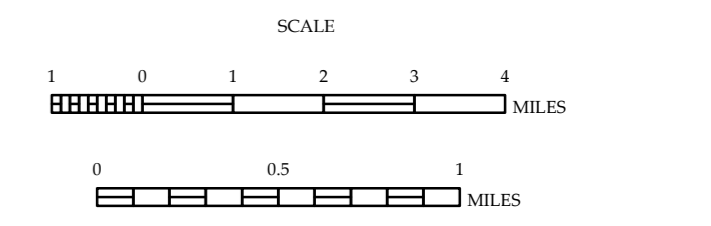


- LEGEND**
- UNPAVED SURFACED ROAD
 - HARD SURFACED ROAD
 - 4 LANE UNDIVIDED HIGHWAY
 - DIVIDED HIGHWAY INSET
 - DIVIDED HIGHWAY W/FRONTAGE ROADS
 - FULL CONTROL ACCESS
 - NON-SYSTEM ROADS
 - PROJECTED LOCATION
 - NATIONAL PARK ROAD
 - BLUE RIDGE PARKWAY
 - INTERSECTION DISTANCE
 - TRAFFIC CIRCLE
 - DETAILED HIGHWAY INTERCHANGE
 - ROAD THROUGH MOUNTAIN PASS
 - HIGHWAY BRIDGE
 - UNDERPASS
 - OVERPASS
 - DRAW SPAN ON BRIDGE
 - HIGHWAY TUNNEL
 - FORD
 - INTERSTATE HIGHWAY
 - U.S. NUMBERED HIGHWAY
 - N.C. NUMBERED HIGHWAY
 - U.S. NUMBERED BICYCLE ROUTE
 - N.C. NUMBERED BICYCLE ROUTE
 - INTERSTATE INTERCHANGE NUMBER
 - SECONDARY ROAD NUMBER
 - UTILITY LINES
 - RAILROAD
 - RAILROAD STATION
 - GRADE CROSSING
 - INSET AREA
 - URBAN EXTENSION LINE
 - NATIONAL FOREST BOUNDARY
 - RESERVATION OR PARK BOUNDARY
 - STATE FOREST BOUNDARY
 - STATE GAMELAND BOUNDARY
 - FEDERAL GAMELAND BOUNDARY
 - MILITARY RESERVATION BOUNDARY
 - STATE LINE
 - COUNTY LINE
 - CITY LIMIT
 - FERRY ROUTE
 - CANAL
 - NARROW CREEK OR STREAM
 - WIDE RIVER OR CREEK
 - RESERVOIR, POND OR LAKE W/ ISLAND
 - DAM OR DAM WITH LOCK
 - WATERFALL
 - SWAMP
 - COMMUNITY, TOWN OR CITY CENTER
 - COUNTY SEAT
 - STATE CAPITAL
 - SCHOOL
 - COLLEGE OR UNIVERSITY
 - HOSPITAL
 - COAST GUARD STATION
 - CHURCH
 - CHURCH WITH CEMETERY
 - CEMETERY
 - PATROL STATION
 - CORRECTION OR PENAL INSTITUTION
 - QUARRY
 - MINE OR PIT
 - HIGHWAY GARAGE OR MAINT. YARD
 - HIGHWAY DIV. OR DIST. OFFICE
 - POST OFFICE
 - MILITARY POST
 - WILDLIFE REFUGE
 - WEIGH STATION
 - FAIRGROUNDS
 - HISTORICAL SITE
 - POINTS OF INTEREST
 - STATE FOREST
 - LIGHTHOUSE
 - MOUNTAIN GAP
 - MOUNTAIN SUMMIT
 - OVERLOOK
 - GEODETIC MARKER
 - REST AREA
 - VISITOR CTR./REST AREA
 - WELCOME CTR./REST AREA
 - MAJOR AIRPORT
 - AIRPORT
 - MILITARY AIRPORT
 - HELIPORT

2016 AADT
ANNUAL AVERAGE DAILY TRAFFIC
GENERATED BY THE
TRAFFIC SURVEY GROUP
TRANSPORTATION PLANNING BRANCH

WILKES COUNTY
NORTH CAROLINA

PREPARED BY THE
NORTH CAROLINA DEPARTMENT OF TRANSPORTATION
MANAGEMENT SYSTEMS AND ASSESSMENTS UNIT - MAPPING SECTION
IN COOPERATION WITH THE
U.S. DEPARTMENT OF TRANSPORTATION
FEDERAL HIGHWAY ADMINISTRATION



10,000 FOOT GRID BASED ON NORTH CAROLINA PLANE COORDINATE SYSTEM
LAMBERT CONFORMAL CONIC PROJECTION

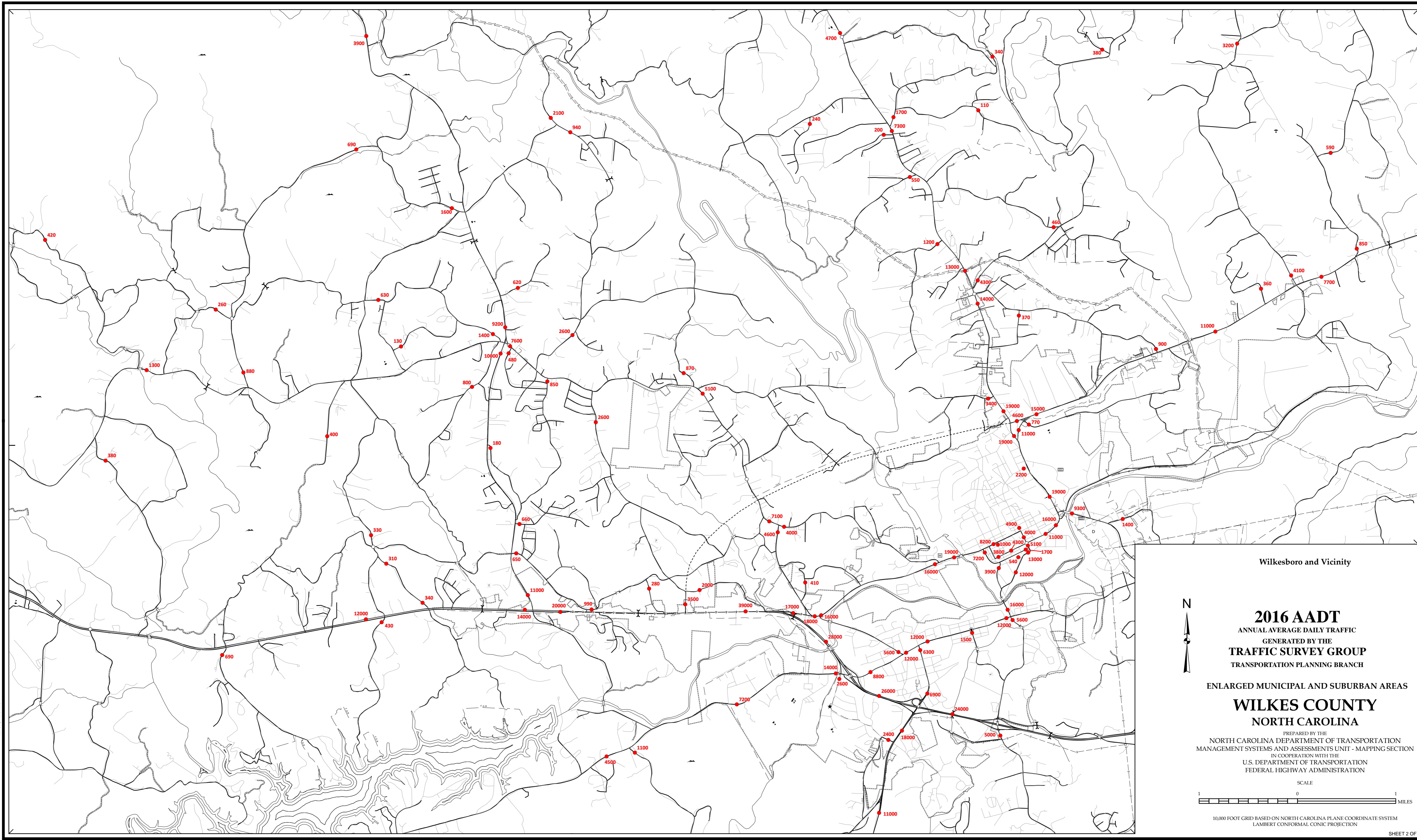


THE MS&U'S GOAL IS TO PROVIDE THE MOST ACCURATE AND CURRENT INFORMATION POSSIBLE. MAP DATA IS OBTAINED FROM A VARIETY OF SOURCES AND IS PROVIDED AS IS. THE MS&U DOES NOT WARRANT THE ACCURACY, COMPLETENESS, OR TIMELINESS OF THE DATA PROVIDED. THIS INFORMATION IS FOR INFORMATIONAL PURPOSES ONLY. FOR ADDITIONAL INFORMATION, VISIT <http://www.ncdot.gov/transportation> AND CLICK ON DATA PROVIDERS OR CONTACT US AT (919) 855-8400.

CORRECTION TO THIS MAP: SEE AVAILABLE TO THE PUBLIC AT: <http://www.ncdot.gov/transportation> ADDRESS: MS&U - MAPPING SECTION RALEIGH, NC 27608

The MS&U's goal is to provide the most accurate and current information possible. Map data is compiled from various sources and is not guaranteed to be 100% accurate. Accuracy, currency and completeness of the data provided will vary. Map includes state-maintained roads and important non-system roads. MS&U's goal is to provide the most accurate and current information possible. Map data is compiled from various sources and is not guaranteed to be 100% accurate. Accuracy, currency and completeness of the data provided will vary. Map includes state-maintained roads and important non-system roads.

COPIES OF THIS MAP ARE AVAILABLE AT A SIGNIFICANT NOMINAL COST. ADDRESS: N.C. DEPARTMENT OF TRANSPORTATION MS&U - MAPPING SECTION 4800 BERRY LANE, SUITE 2000 RALEIGH, NC 27606



Wilkesboro and Vicinity

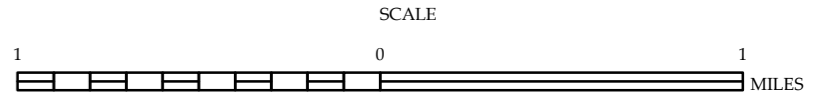


2016 AADT
ANNUAL AVERAGE DAILY TRAFFIC
GENERATED BY THE
TRAFFIC SURVEY GROUP
TRANSPORTATION PLANNING BRANCH

ENLARGED MUNICIPAL AND SUBURBAN AREAS

WILKES COUNTY
NORTH CAROLINA

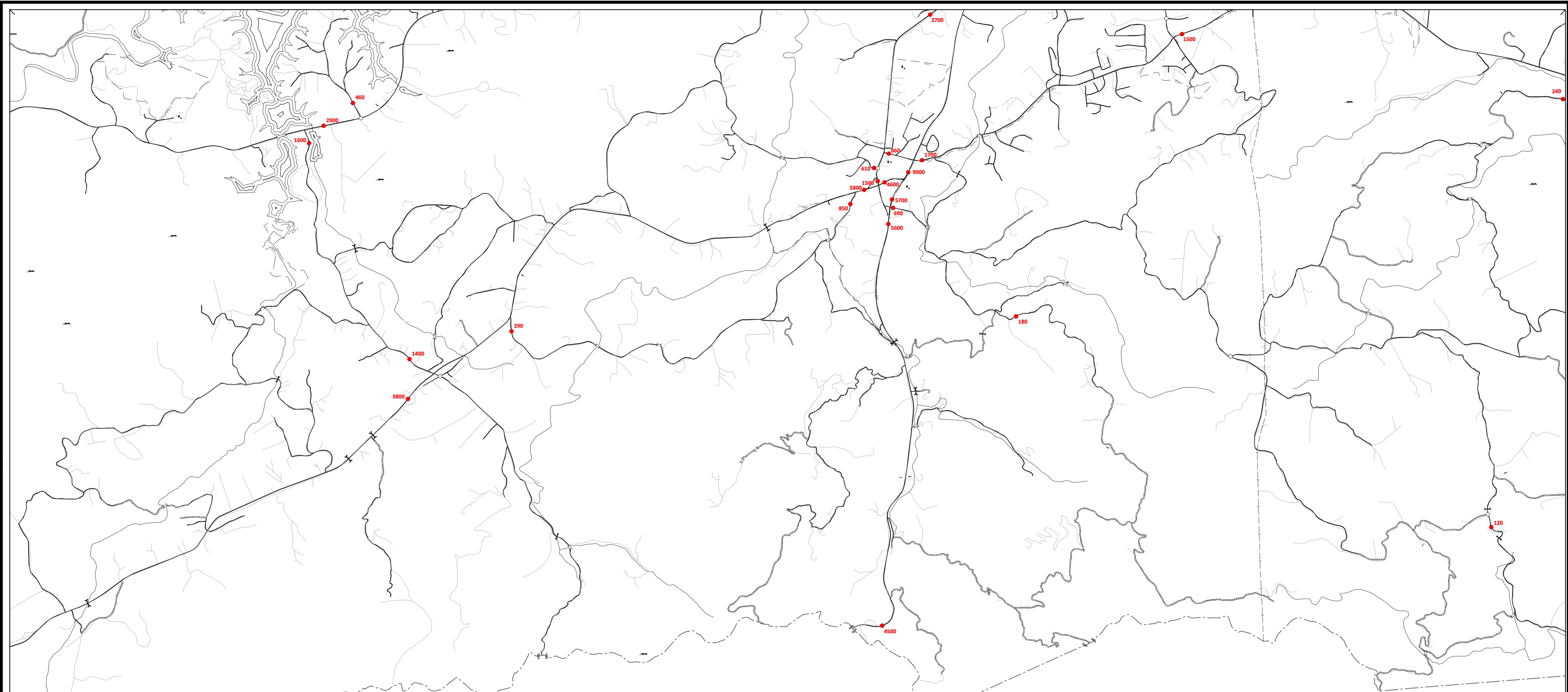
PREPARED BY THE
NORTH CAROLINA DEPARTMENT OF TRANSPORTATION
MANAGEMENT SYSTEMS AND ASSESSMENTS UNIT - MAPPING SECTION
IN COOPERATION WITH THE
U.S. DEPARTMENT OF TRANSPORTATION
FEDERAL HIGHWAY ADMINISTRATION



10,000 FOOT GRID BASED ON NORTH CAROLINA PLANE COORDINATE SYSTEM
LAMBERT CONFORMAL CONIC PROJECTION

The MSADs and its contents are provided for informational purposes. Map data is compiled from numerous sources with varying dates of publication and map accuracy standards. As a result, the accuracy, currency and completeness of the data provided will vary. Map includes state-maintained roads. The information shown on this map was last updated on August, 2017. For additional information, visit <http://www.ncdot.gov/transportation/transportation>, and click on Data Providers or contact us at (919) 856-9480.

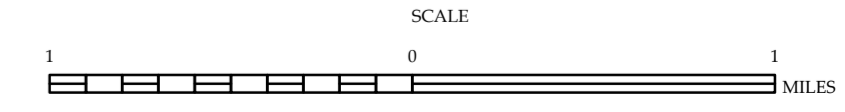
COPIES OF THIS MAP ARE AVAILABLE TO THE PUBLIC AT NOMINAL COST. ADDRESS: N.C. DEPARTMENT OF TRANSPORTATION MSAL - MAPPING SECTION RALEIGH, NC 27606



Boomer and Vicinity

**ENLARGED MUNICIPAL AND SUBURBAN AREAS
WILKES COUNTY
NORTH CAROLINA**

PREPARED BY THE
NORTH CAROLINA DEPARTMENT OF TRANSPORTATION
MANAGEMENT SYSTEMS AND ASSESSMENTS UNIT - MAPPING SECTION
IN COOPERATION WITH THE
U.S. DEPARTMENT OF TRANSPORTATION
FEDERAL HIGHWAY ADMINISTRATION

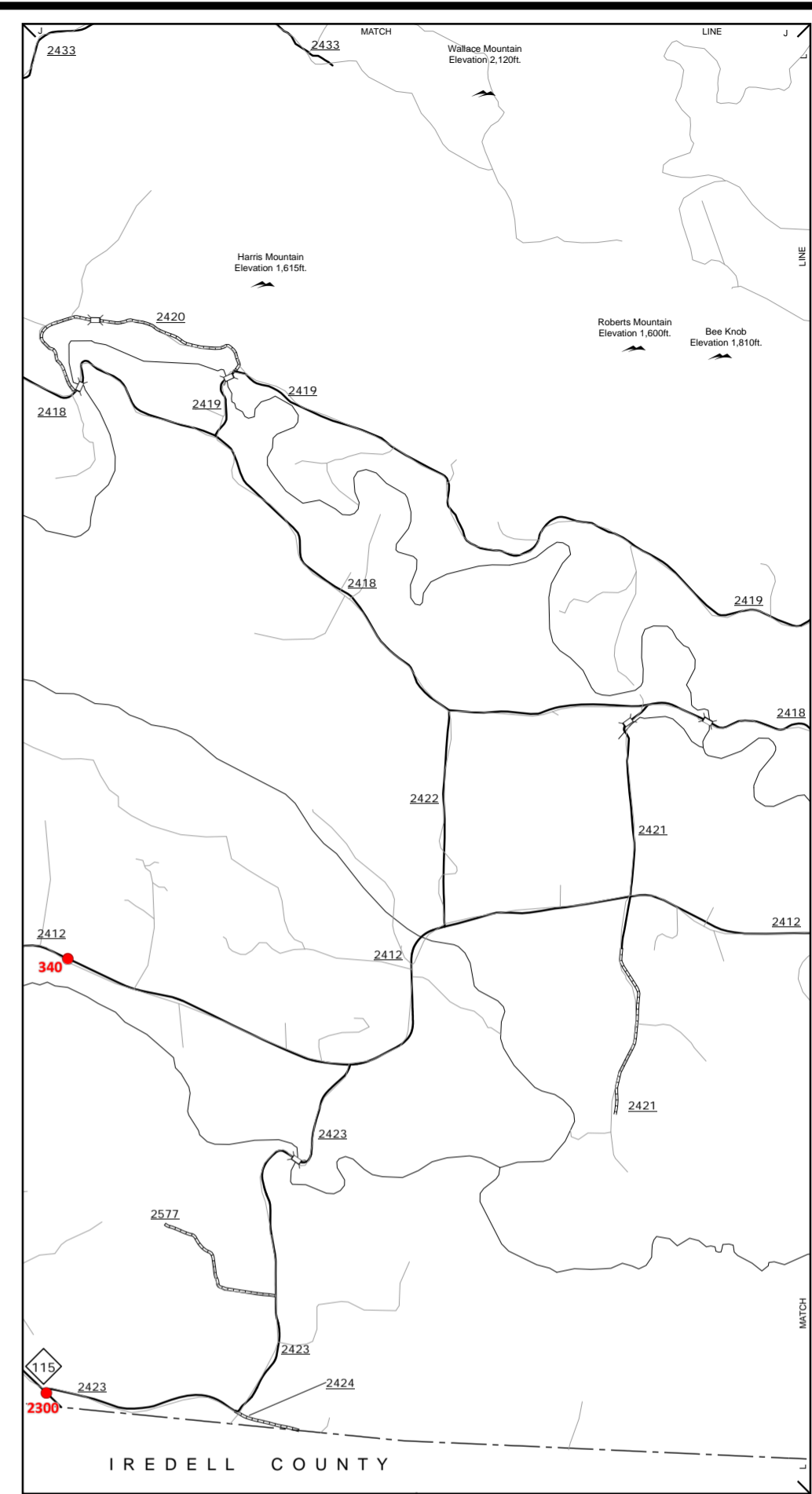
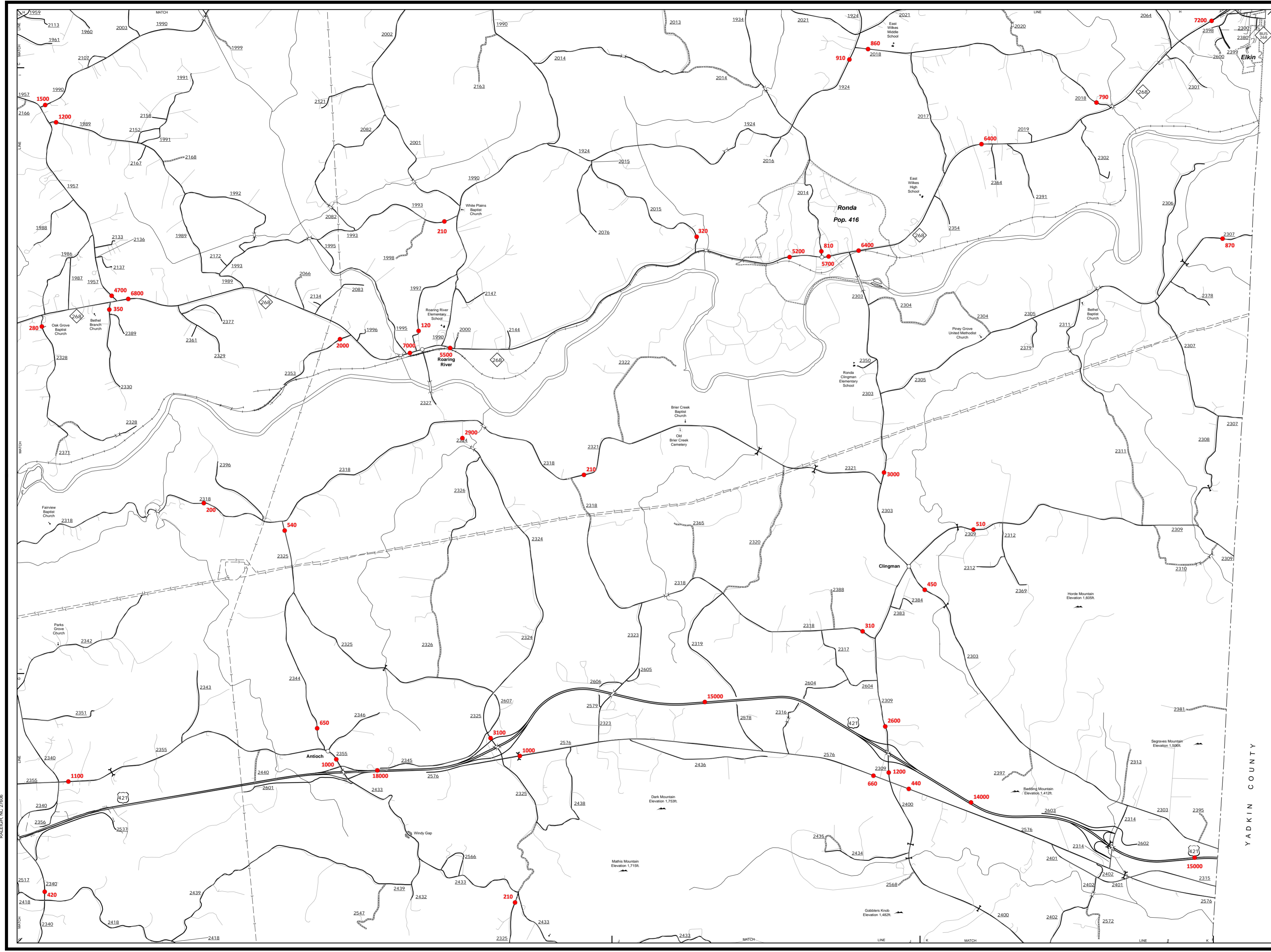


10,000 FOOT GRID BASED ON NORTH CAROLINA PLANE COORDINATE SYSTEM
LAMBERT CONFORMAL CONIC PROJECTION

2016 AADT
ANNUAL AVERAGE DAILY TRAFFIC
GENERATED BY THE
TRAFFIC SURVEY GROUP
TRANSPORTATION PLANNING BRANCH

The ASA's goal is to provide the most accurate and current information possible. Map data is compiled from numerous sources with varying dates of publication and map accuracy standards. As a result, the information shown on this map was updated on August 2017. For additional information, visit www.ncdot.gov. The information shown on this map was updated on August 2017. For additional information, visit www.ncdot.gov. The information shown on this map was updated on August 2017. For additional information, visit www.ncdot.gov.

DEPARTMENT OF TRANSPORTATION
 NORTH CAROLINA
 4809 BERRY RD
 RALEIGH, NC 27698



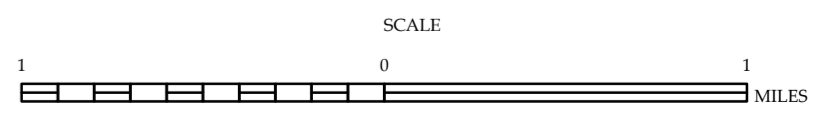
Inset 1

Rhonda and Vicinity



2016 AADT
 ANNUAL AVERAGE DAILY TRAFFIC
 GENERATED BY THE
TRAFFIC SURVEY GROUP
 TRANSPORTATION PLANNING BRANCH
 ENLARGED MUNICIPAL AND SUBURBAN AREAS
WILKES COUNTY
 NORTH CAROLINA

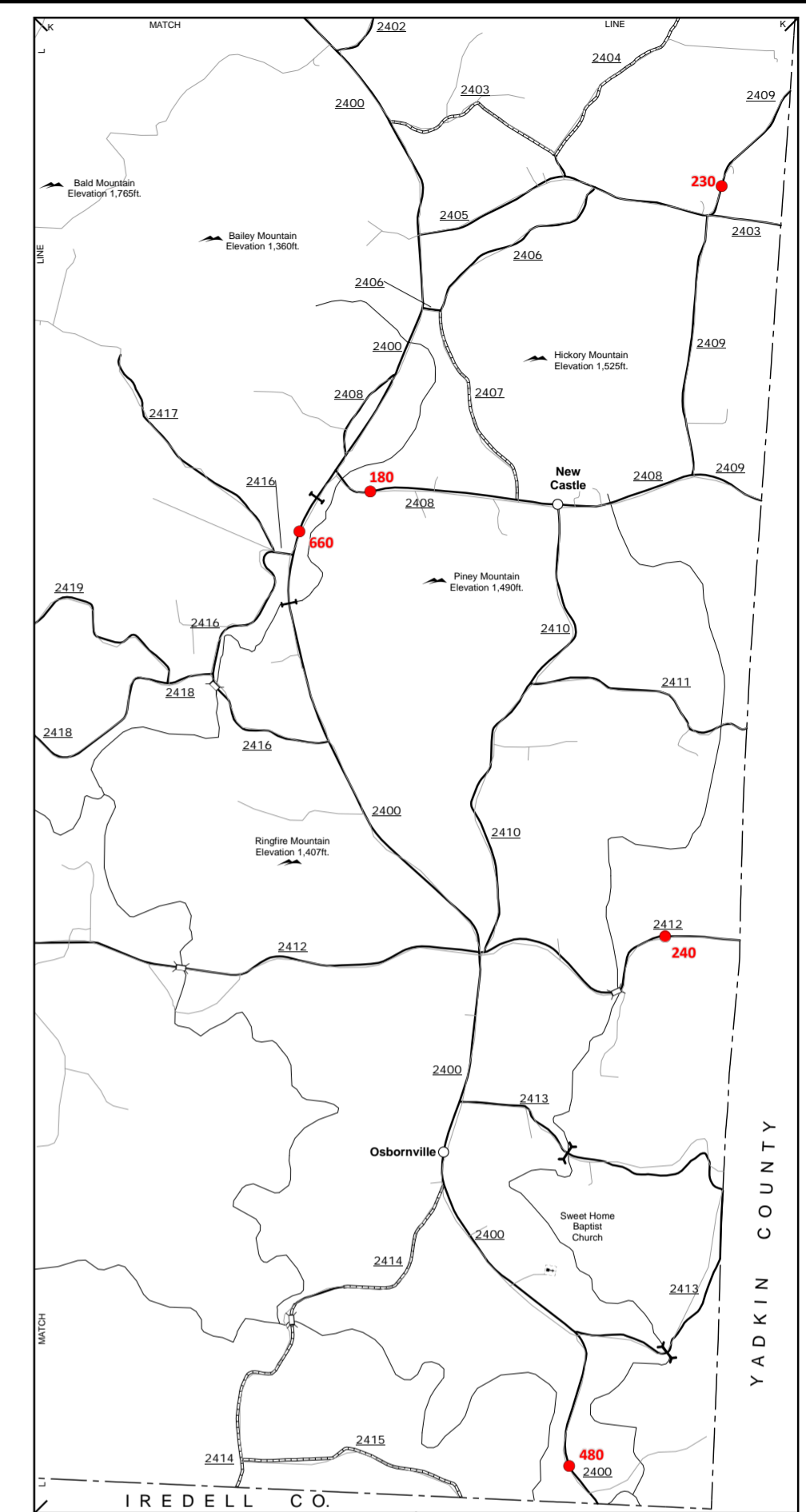
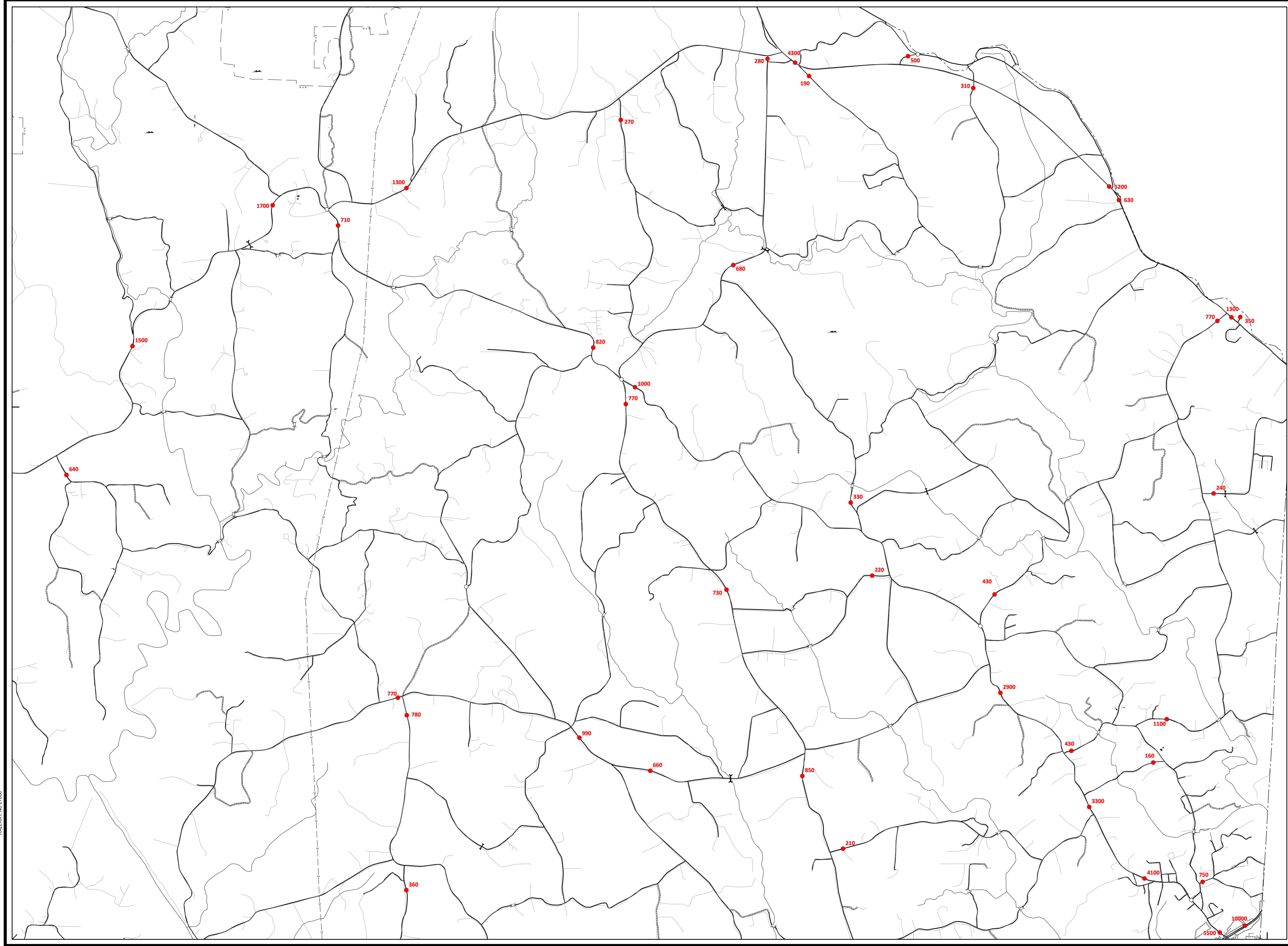
PREPARED BY THE
 NORTH CAROLINA DEPARTMENT OF TRANSPORTATION
 MANAGEMENT SYSTEMS AND ASSESSMENTS UNIT - MAPPING SECTION
 IN COOPERATION WITH THE
 U.S. DEPARTMENT OF TRANSPORTATION
 FEDERAL HIGHWAY ADMINISTRATION



10,000 FOOT GRID BASED ON NORTH CAROLINA PLANE COORDINATE SYSTEM
 LAMBERT CONFORMAL CONIC PROJECTION

The MSAL's goal is to provide the most accurate and current information possible. Map data is compiled from various sources and is not guaranteed to be 100% accurate. MSAL is not responsible for any errors or omissions in this map. For additional information, visit www.ncdot.gov and click on Data Providers or contact us at (919) 835-8480.

COPIES OF THIS MAP ARE AVAILABLE AT NOMINAL COST.
 ADDRESS:
 N.C. DEPARTMENT OF TRANSPORTATION
 MSAL MAPPING SECTION
 4000 BERRY RD
 RALEIGH, NC 27606



New Castle & Osbornville

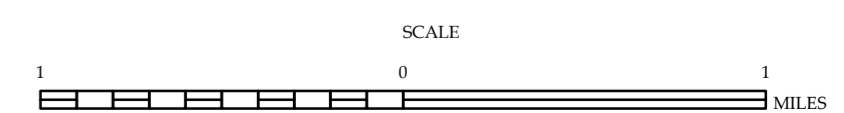
West Elkin and Vicinity

2016 AADT
 ANNUAL AVERAGE DAILY TRAFFIC
 GENERATED BY THE
TRAFFIC SURVEY GROUP
 TRANSPORTATION PLANNING BRANCH

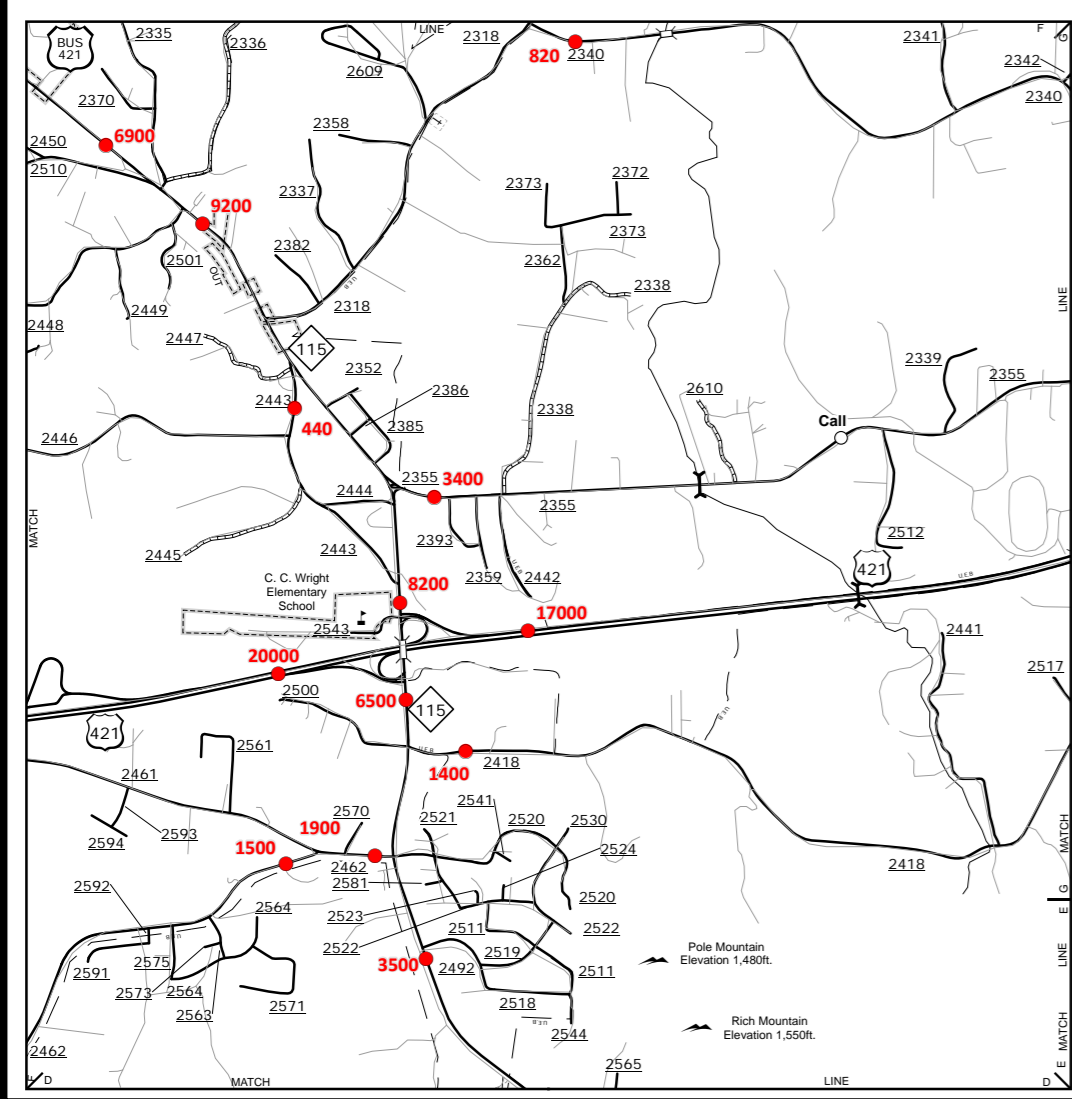
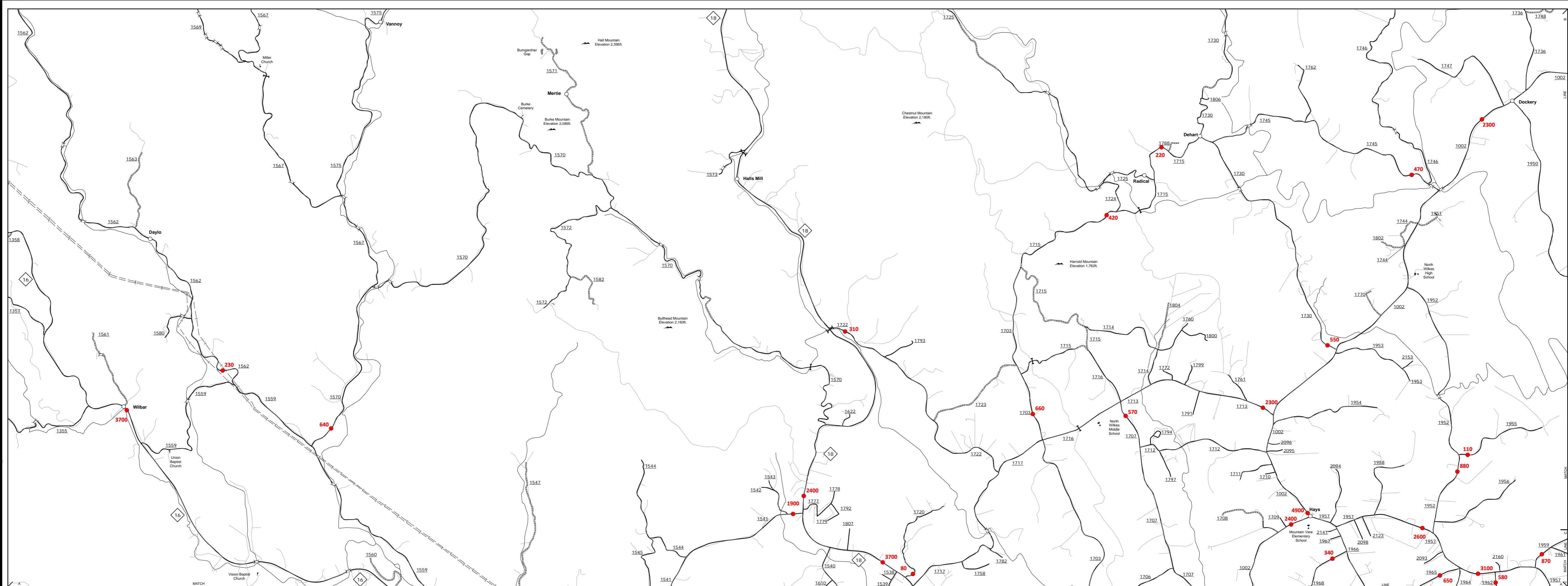
ENLARGED MUNICIPAL AND SUBURBAN AREAS

WILKES COUNTY
 NORTH CAROLINA

PREPARED BY THE
 NORTH CAROLINA DEPARTMENT OF TRANSPORTATION
 MANAGEMENT SYSTEMS AND ASSESSMENTS UNIT - MAPPING SECTION
 IN COOPERATION WITH THE
 U.S. DEPARTMENT OF TRANSPORTATION
 FEDERAL HIGHWAY ADMINISTRATION


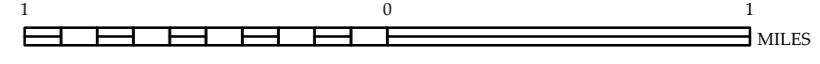


10,000 FOOT GRID BASED ON NORTH CAROLINA PLANE COORDINATE SYSTEM
 LAMBERT CONFORMAL CONIC PROJECTION



Austin, Benham, Lomax, Traphill & Thurmond

Call and Vicinity


2016 AADT
 ANNUAL AVERAGE DAILY TRAFFIC
 GENERATED BY THE
TRAFFIC SURVEY GROUP
 TRANSPORTATION PLANNING BRANCH
 ENLARGED MUNICIPAL AND SUBURBAN AREAS
WILKES COUNTY
 NORTH CAROLINA
 PREPARED BY THE
 NORTH CAROLINA DEPARTMENT OF TRANSPORTATION
 MANAGEMENT SYSTEMS AND ASSESSMENTS UNIT - MAPPING SECTION
 IN COOPERATION WITH THE
 U.S. DEPARTMENT OF TRANSPORTATION
 FEDERAL HIGHWAY ADMINISTRATION
 SCALE

 10,000 FOOT GRID BASED ON NORTH CAROLINA PLANE COORDINATE SYSTEM
 LAMBERT CONFORMAL CONIC PROJECTION

The NSAU's goal is to provide the most accurate and current information possible. Map data is compiled from various sources and is not guaranteed to be 100% accurate. Accuracy, currency and completeness of the data provided will vary. Map includes state-maintained roads and important non-system roads.
<http://www.ncdot.gov/transportation/transportation/transportation>
 For additional information, visit <http://www.ncdot.gov/transportation/transportation/transportation> and click on Data Providers or contact us at (919) 855-8480.

COPIES OF THIS MAP ARE AVAILABLE
 AT A PUBLIC HEARING COST:
 ADDRESS:
 N.C. DEPARTMENT OF TRANSPORTATION
 NSAU - MAPPING SECTION
 4800 BERRY LANE
 RALEIGH, NC 27606