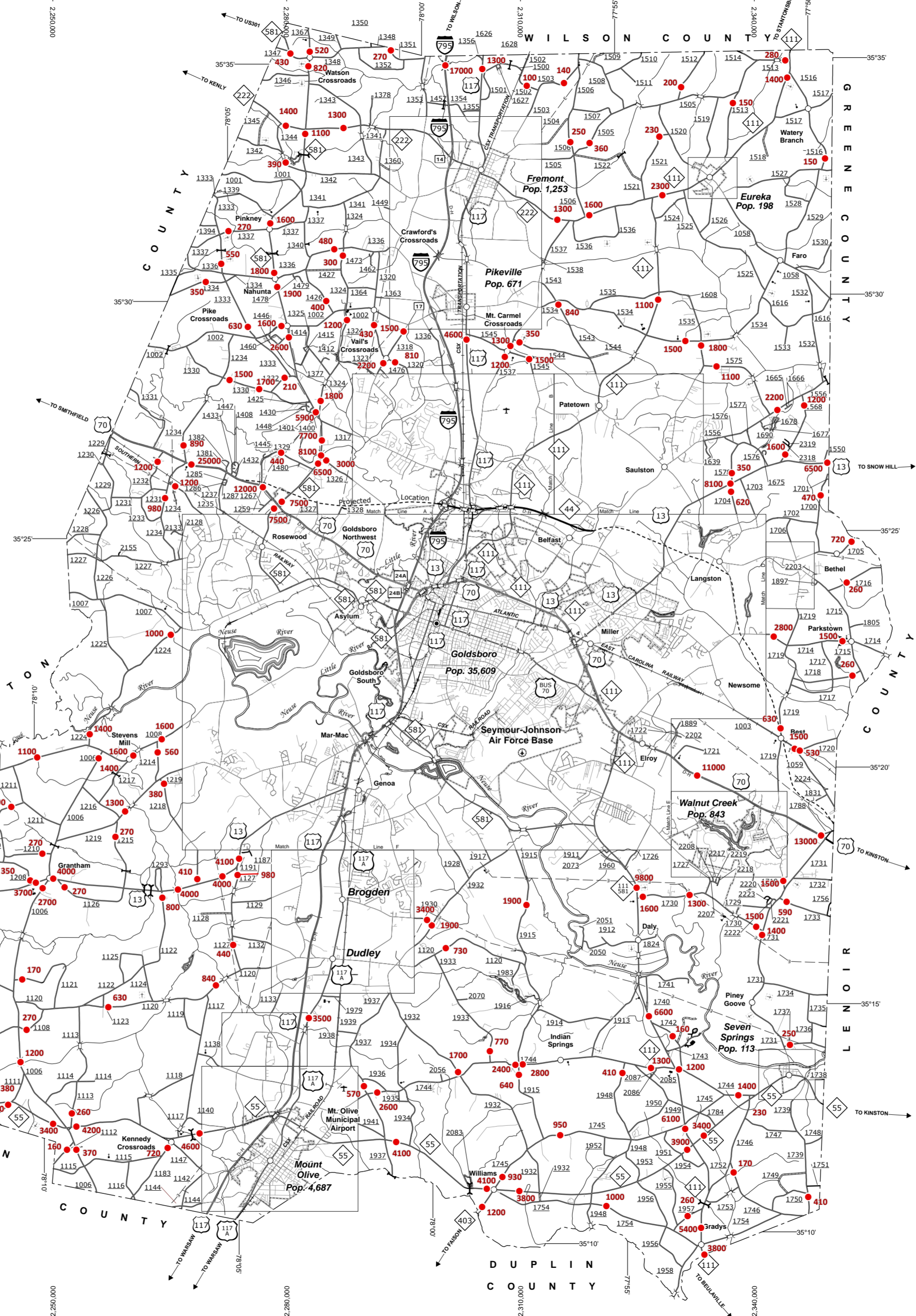
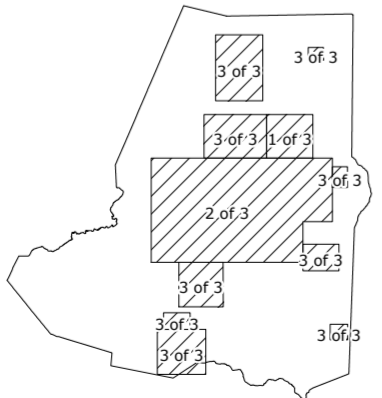
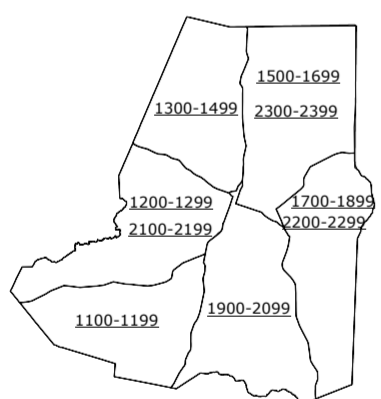
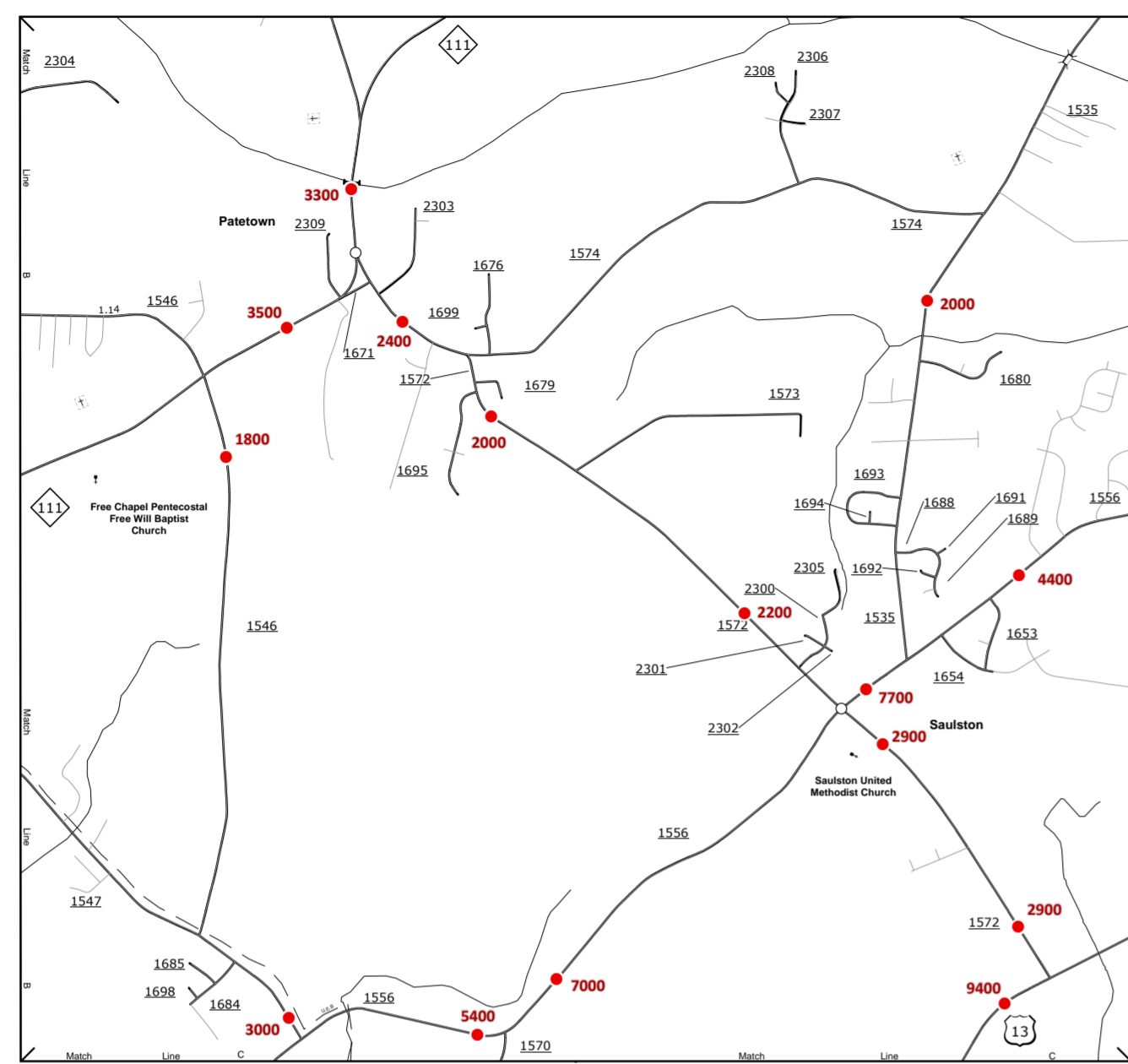


The MS&U's goal is to provide the most accurate and current information possible. Map data is compiled from numerous sources with varying dates of publication and map accuracy standards. As a result, the information shown on this map was last updated on August, 2017. For additional information, visit www.ncdot.gov and click on Data Providers or contact us at (919) 859-9466.

COPIES OF THIS MAP ARE AVAILABLE TO THE PUBLIC AT NOMINAL COST. ADDRESS: N.C. DEPARTMENT OF TRANSPORTATION, TRANSPORTATION SECTION, 4809 BERYL RD, RALEIGH, NC 27606



- ### LEGEND
- UNPAVED SURFACED ROAD
 - HARD SURFACED ROAD
 - 4 LANE UNDIVIDED HIGHWAY
 - DIVIDED HIGHWAY INSET
 - DIVIDED HIGHWAY W/FRONTAGE ROADS
 - FULL CONTROL ACCESS
 - NON-SYSTEM ROADS
 - PROJECTED LOCATION
 - NATIONAL PARK ROAD
 - BLUE RIDGE PARKWAY
 - INTERSECTION DISTANCE
 - TRAFFIC CIRCLE
 - DETAILED HIGHWAY INTERCHANGE
 - ROAD THROUGH MOUNTAIN PASS
 - HIGHWAY BRIDGE
 - UNDERPASS
 - OVERPASS
 - DRAW SPAN ON BRIDGE
 - HIGHWAY TUNNEL
 - POD
 - INTERSTATE HIGHWAY
 - U.S. NUMBERED HIGHWAY
 - N.C. NUMBERED HIGHWAY
 - U.S. NUMBERED BICYCLE ROUTE
 - N.C. NUMBERED BICYCLE ROUTE
 - INTERSTATE INTERCHANGE NUMBER
 - SECONDARY ROAD NUMBER
 - UTILITY LINES
 - RAILROAD
 - RAILROAD STATION
 - GRADE CROSSING
 - INSET AREA
 - URBAN EXTENSION LINE
 - NATIONAL FOREST BOUNDARY
 - RESERVATION OR PARK BOUNDARY
 - STATE FOREST BOUNDARY
 - STATE GAMELAND BOUNDARY
 - FEDERAL GAMELAND BOUNDARY
 - MILITARY RESERVATION BOUNDARY
 - STATE LINE
 - COUNTY LINE
 - CITY LIMIT
 - FERRY ROUTE
 - CANAL
 - NARROW CREEK OR STREAM
 - WIDE RIVER OR CREEK
 - RESERVOIR, POND OR LAKE W/ ISLAND
 - DAM OR DAM WITH LOCK
 - WATERFALL
 - SWAMP
 - COMMUNITY, TOWN OR CITY CENTER
 - COUNTY SEAT
 - STATE CAPITAL
 - SCHOOL
 - COLLEGE OR UNIVERSITY
 - HOSPITAL
 - COAST GUARD STATION
 - CHURCH
 - CHURCH WITH CEMETERY
 - CEMETERY
 - PATROL STATION
 - CORRECTION OR PENAL INSTITUTION
 - QUARRY
 - MINE OR PIT
 - HIGHWAY GARAGE OR MAINT. YARD
 - HIGHWAY DIV. OR DIST. OFFICE
 - POST OFFICE
 - MILITARY POST
 - WILDLIFE REFUGE
 - WEIGH STATION
 - FAIRGROUNDS
 - HISTORICAL SITE
 - POINTS OF INTEREST
 - STATE FOREST
 - LIGHTHOUSE
 - MOUNTAIN GAP
 - MOUNTAIN SUMMIT
 - OVERLOOK
 - GEOBOTIC MARKER
 - REST AREA
 - VISITOR CTR/REST AREA
 - WELCOME CTR/REST AREA
 - MAJOR AIRPORT
 - AIRPORT
 - MILITARY AIRPORT
 - HELIPORT

2016 AADT

ANNUAL AVERAGE DAILY TRAFFIC
GENERATED BY THE
TRAFFIC SURVEY GROUP
TRANSPORTATION PLANNING BRANCH

WAYNE COUNTY

NORTH CAROLINA

PREPARED BY THE
NORTH CAROLINA DEPARTMENT OF TRANSPORTATION
MANAGEMENT SYSTEMS AND ASSESSMENTS UNIT - MAPPING SECTION
IN COOPERATION WITH THE
U.S. DEPARTMENT OF TRANSPORTATION
FEDERAL HIGHWAY ADMINISTRATION


SCALE

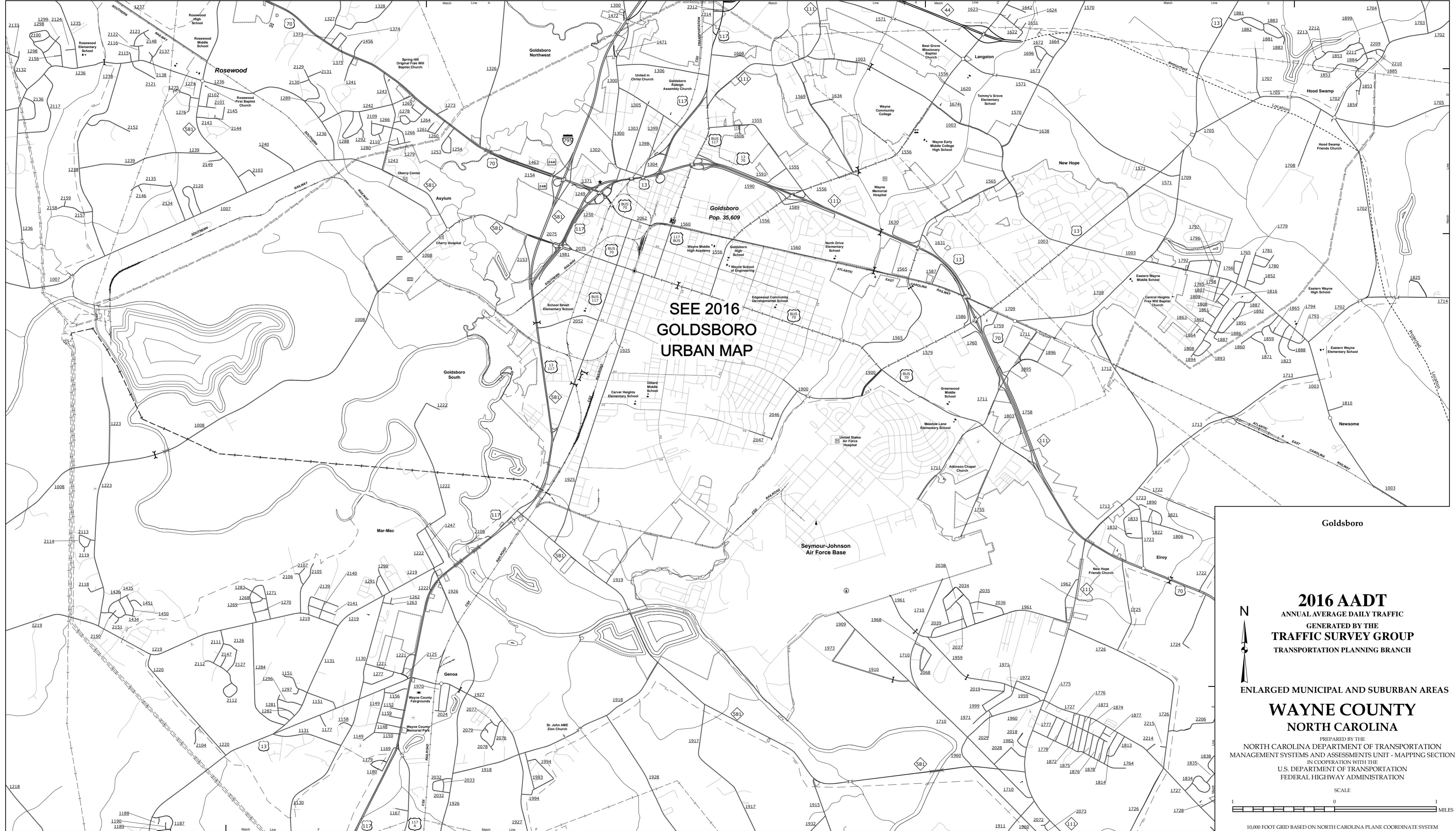
1 0 1 2 3 4
MILES

0 0.5 1
MILES

SCALE FOR ENLARGEMENTS

10,000 FOOT GRID BASED ON NORTH CAROLINA PLANE COORDINATE SYSTEM
LAMBERT CONFORMAL CONIC PROJECTION





SEE 2016
GOLDSBORO
 URBAN MAP

Goldsboro

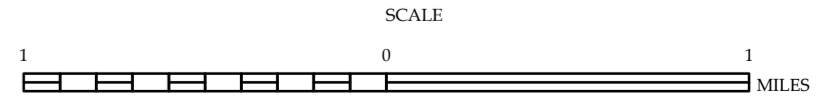


2016 AADT
 ANNUAL AVERAGE DAILY TRAFFIC
 GENERATED BY THE
TRAFFIC SURVEY GROUP
 TRANSPORTATION PLANNING BRANCH

ENLARGED MUNICIPAL AND SUBURBAN AREAS

WAYNE COUNTY
 NORTH CAROLINA

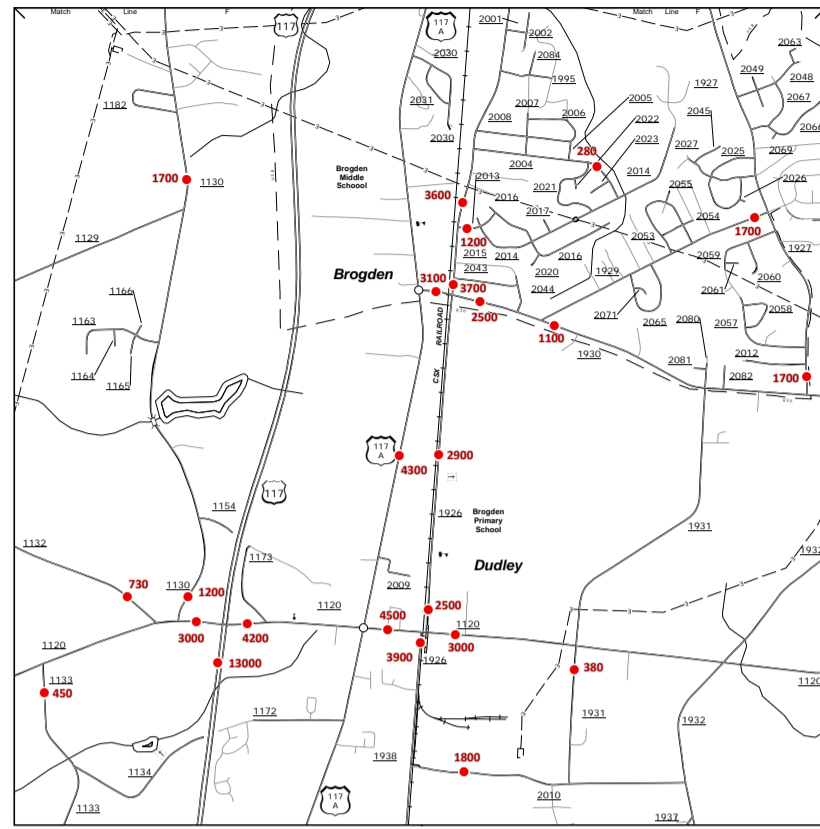
PREPARED BY THE
 NORTH CAROLINA DEPARTMENT OF TRANSPORTATION
 MANAGEMENT SYSTEMS AND ASSESSMENT'S UNIT - MAPPING SECTION
 IN COOPERATION WITH THE
 U.S. DEPARTMENT OF TRANSPORTATION
 FEDERAL HIGHWAY ADMINISTRATION



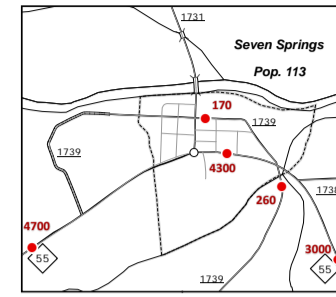
10,000 FOOT GRID BASED ON NORTH CAROLINA PLANE COORDINATE SYSTEM
 LAMBERT CONFORMAL CONIC PROJECTION

THIS MAP IS NOT TO BE USED FOR THE PURPOSES OF DESIGNING OR CONSTRUCTING HIGHWAYS. THE DATA IS NOT GUARANTEED FOR ACCURACY, CURRENTNESS, OR COMPLETENESS OF THE DATA PROVIDED. THE DATA IS PROVIDED AS IS. THE USER ASSUMES ALL LIABILITY FOR THE USE OF THIS MAP. THE INFORMATION SHOWN ON THIS MAP WAS LAST UPDATED ON AUGUST, 2017. FOR ADDITIONAL INFORMATION, VISIT <http://www.ncdot.gov/transportation/mapping/> and click on Data Providers or contact us at (919) 835-8480.

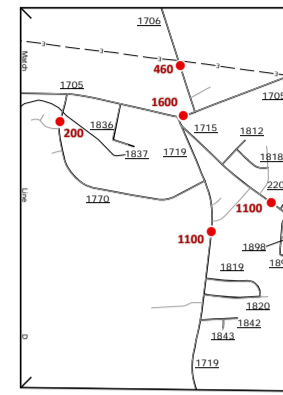
COPIES OF THIS MAP ARE AVAILABLE TO THE PUBLIC AT NOMINAL COST. ADDRESS: N.C. DEPARTMENT OF TRANSPORTATION, MSAU - MAPPING SECTION, RALEIGH, NC 27606



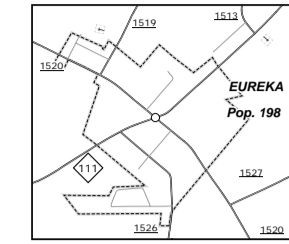
Brogden



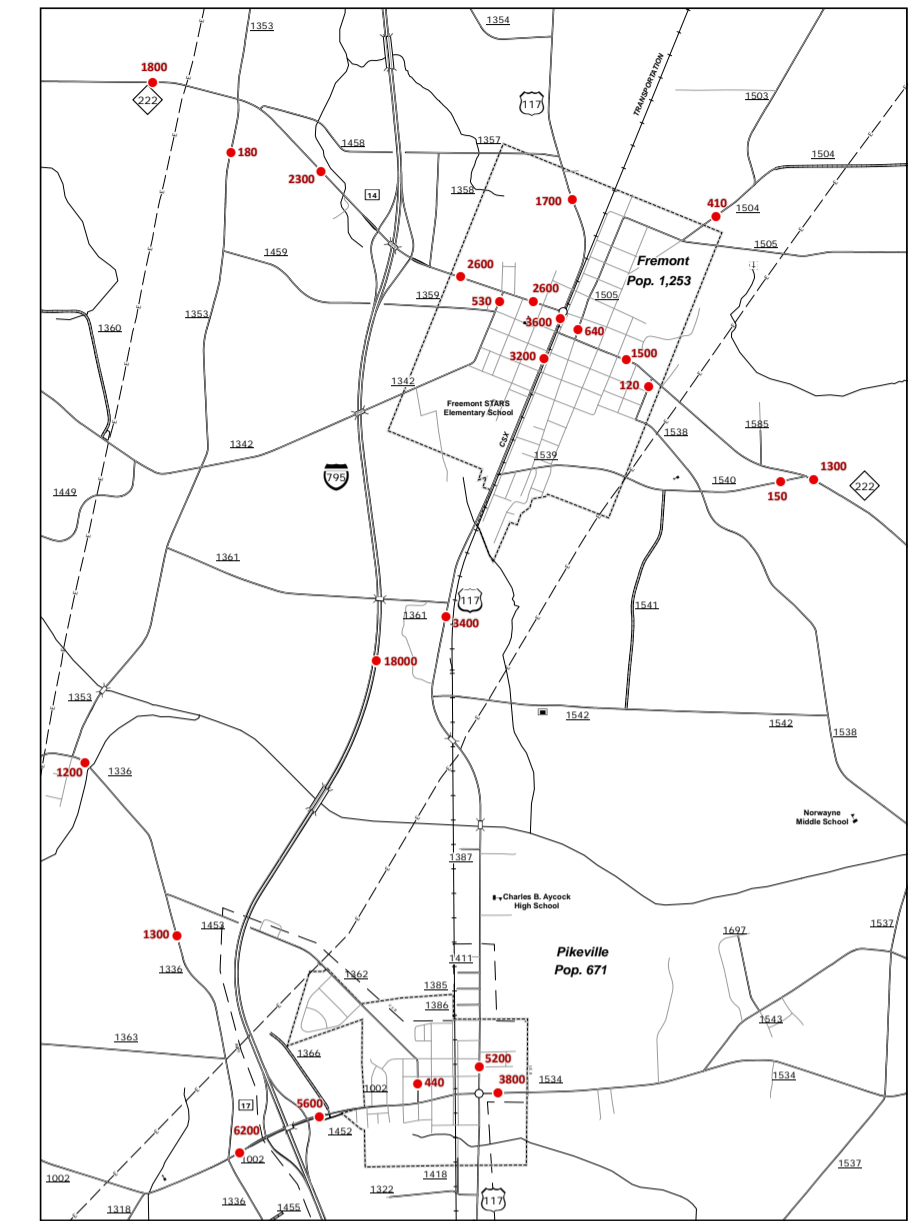
Seven Springs



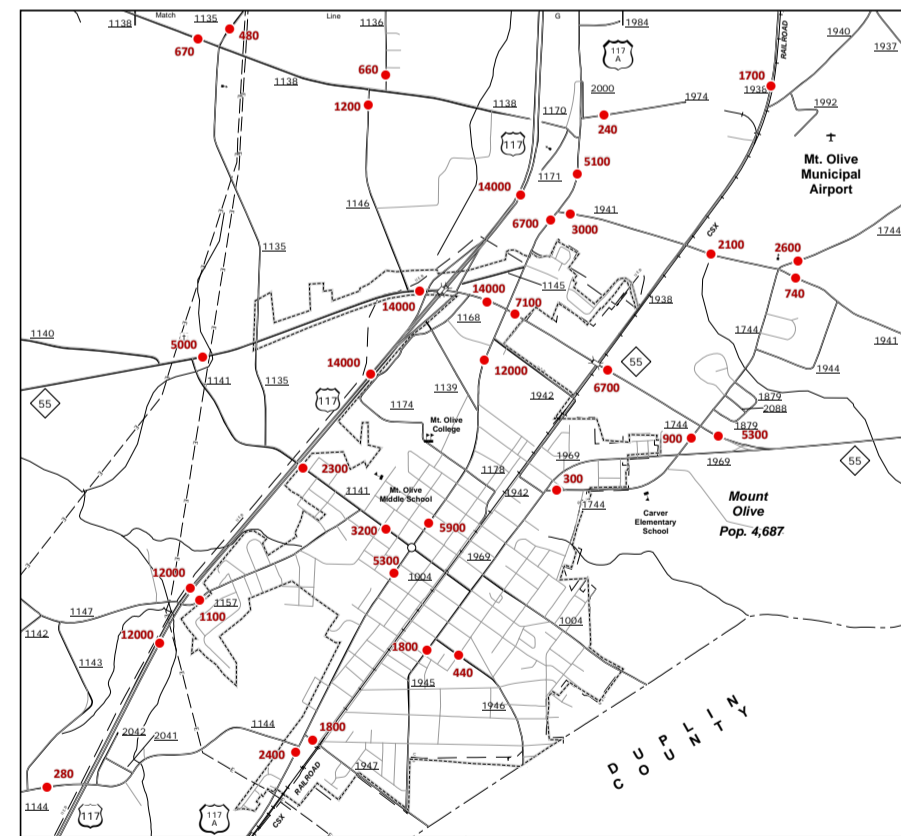
Inset 1



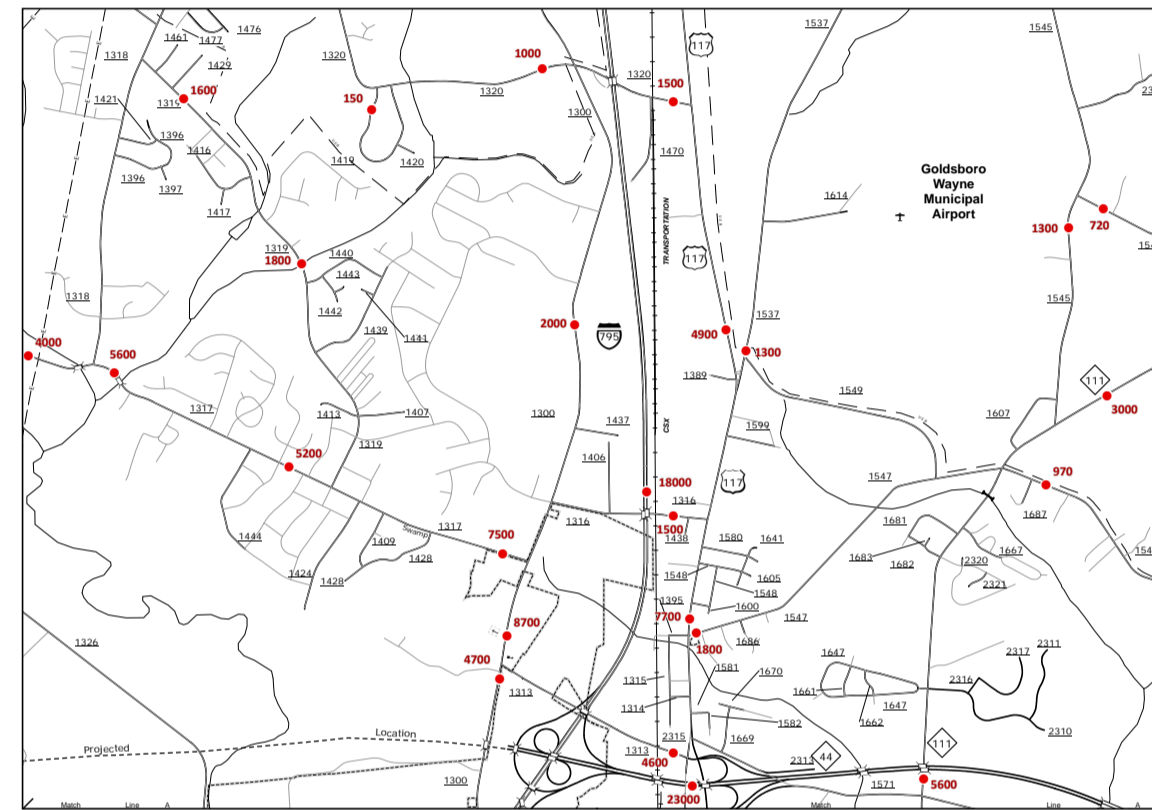
Eureka



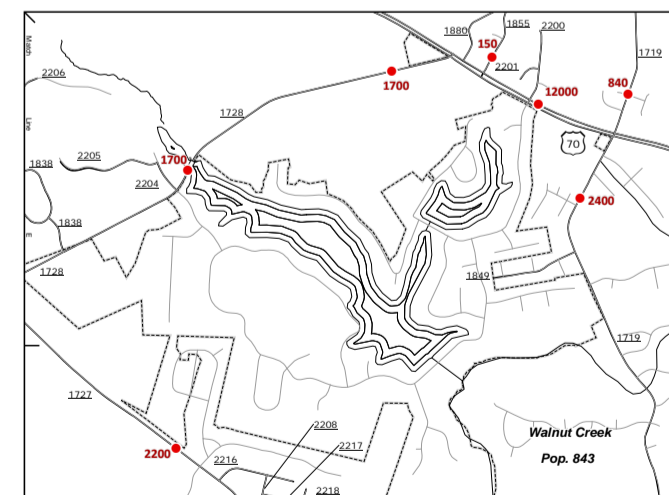
Fremont



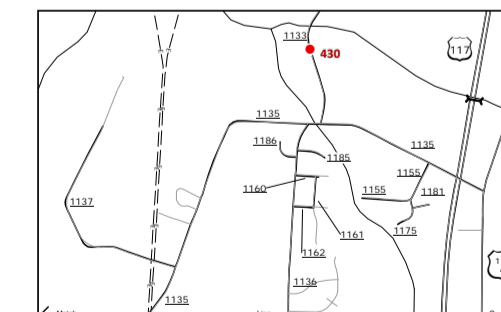
Mount Olive



Belfast and Vicinity



Walnut Creek



Inset 2



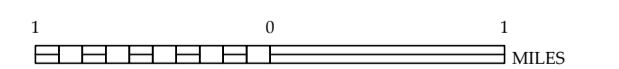
2016 AADT
ANNUAL AVERAGE DAILY TRAFFIC
GENERATED BY THE
TRAFFIC SURVEY GROUP
TRANSPORTATION PLANNING BRANCH

ENLARGED MUNICIPAL AND SUBURBAN AREAS

WAYNE COUNTY
NORTH CAROLINA

PREPARED BY THE
NORTH CAROLINA DEPARTMENT OF TRANSPORTATION
MANAGEMENT SYSTEMS AND ASSESSMENTS UNIT - MAPPING SECTION
IN COOPERATION WITH THE
U.S. DEPARTMENT OF TRANSPORTATION
FEDERAL HIGHWAY ADMINISTRATION

SCALE



10,000 FOOT GRID BASED ON NORTH CAROLINA PLANE COORDINATE SYSTEM
LAMBERT CONFORMAL CONIC PROJECTION

The NGA's goal is to provide the most accurate and current information possible. Any data is provided as a service and is not guaranteed. The accuracy, currency and completeness of the data provided will vary. Map includes state-maintained roads. The information shown on this map was last updated on August, 2017. For additional information, visit <http://www.ncdot.gov/transportation> and click on Data Providers or contact us at (919) 835-8480.

COPIES OF THIS MAP ARE AVAILABLE TO THE PUBLIC AT NOMINAL COST. ADDRESS: N.C. DEPARTMENT OF TRANSPORTATION, 4800 BERRY RD., SECTION 4800, RALEIGH, NC 27696