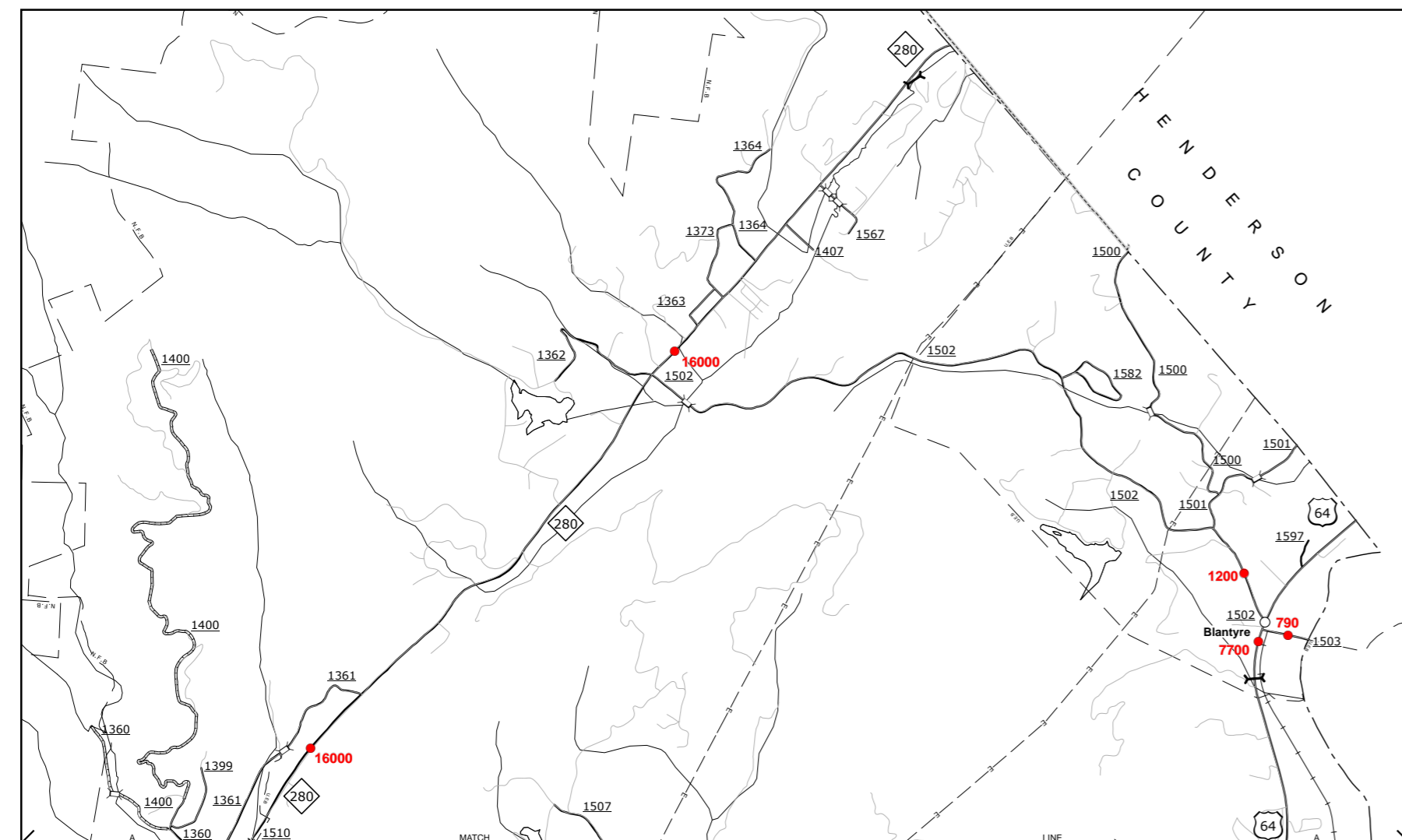
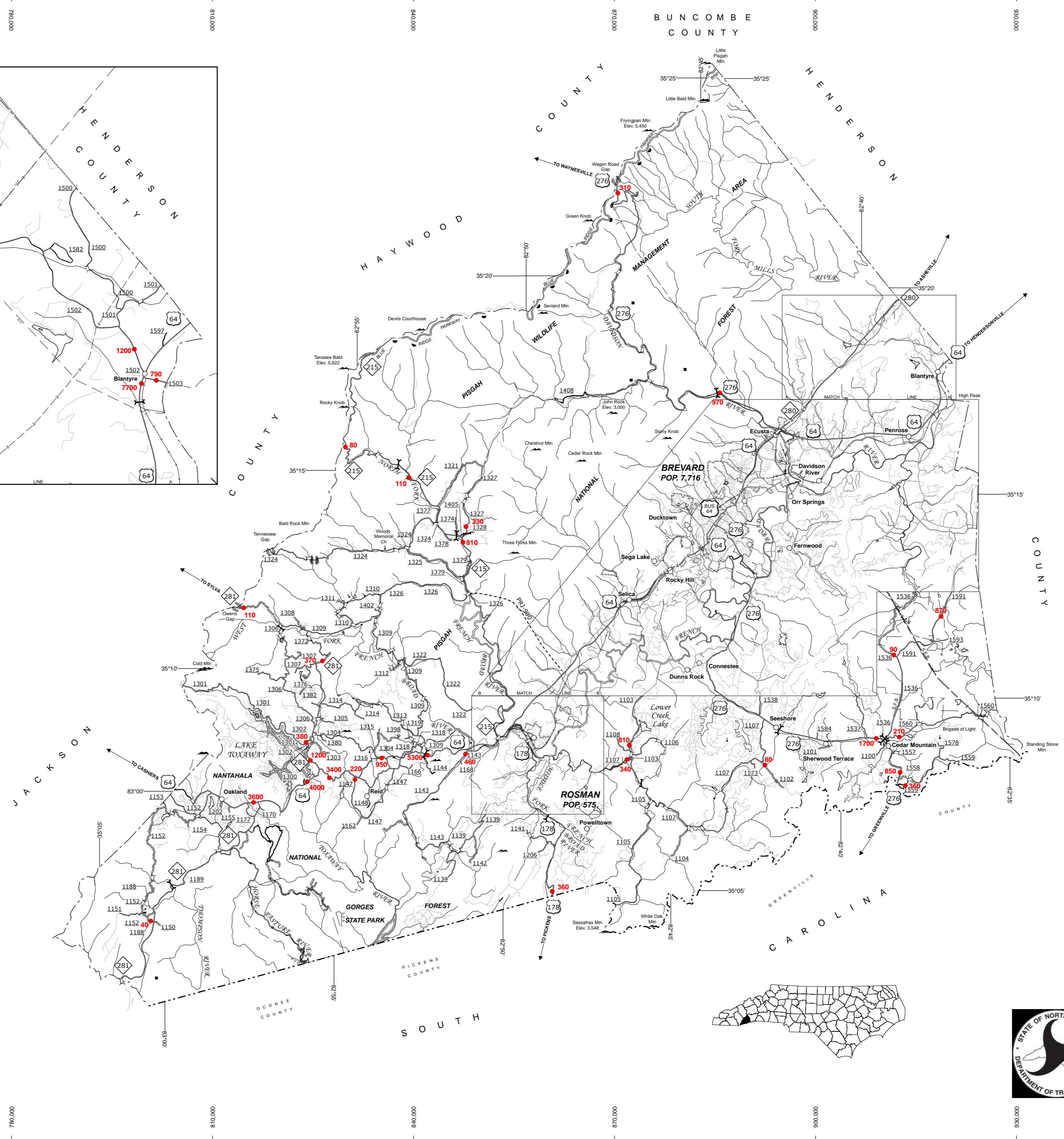
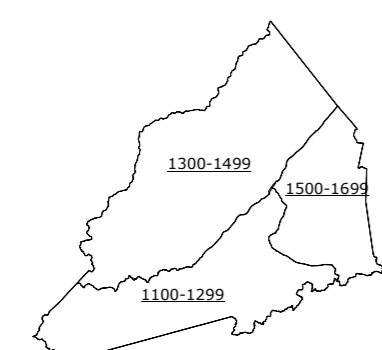
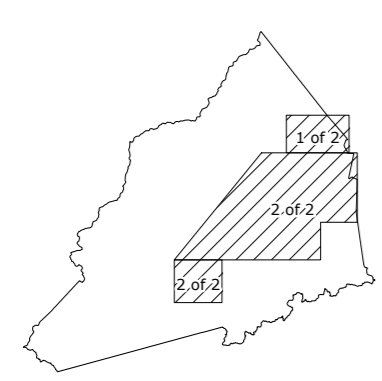


The MS&U's goal is to provide the most accurate and current information possible. The data is compiled from a variety of sources and is subject to change without notice. The accuracy, currency and completeness of the data provided will vary. Map includes state-maintained roads. The information shown on the map was last updated on August, 2017. For additional information, visit [www.ncdot.gov/transportation](http://www.ncdot.gov/transportation) and click on Data Providers or contact us at (919) 835-8480.

CENSUS DATA WAS AVAILABLE TO THE PUBLIC AT AN ANNUAL COST. ADDRESS: N.C. DEPARTMENT OF TRANSPORTATION MS&U - MAPPING SECTION RALEIGH, NC 27608

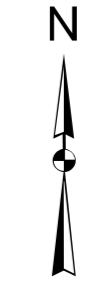


Boylston Creek



LEGEND

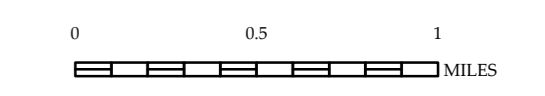
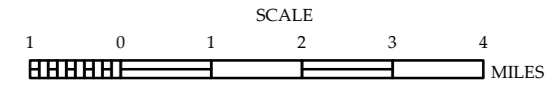
- UNPAVED SURFACED ROAD
- HARD SURFACED ROAD
- 4-LANE UNDIVIDED HIGHWAY
- DIVIDED HIGHWAY INSET
- DIVIDED HIGHWAY W/FRONTAGE ROADS
- FULL CONTROL ACCESS
- NON-SYSTEM ROADS
- PROJECTED LOCATION
- NATIONAL PARK ROAD
- BLUE RIDGE PARKWAY
- INTERSECTION DISTANCE
- TRAFFIC CIRCLE
- DETAILED HIGHWAY INTERCHANGE
- ROAD THROUGH MOUNTAIN PASS
- HIGHWAY BRIDGE
- UNDERPASS
- OVERPASS
- DRAW SPAN ON BRIDGE
- HIGHWAY TUNNEL
- FORD
- INTERSTATE HIGHWAY
- U.S. NUMBERED HIGHWAY
- N.C. NUMBERED HIGHWAY
- U.S. NUMBERED BICYCLE ROUTE
- INTERSTATE INTERCHANGE NUMBER
- SECONDARY ROAD NUMBER
- UTILITY LINES
- RAILROAD
- RAILROAD STATION
- GRADE CROSSING
- INSET AREA
- URBAN EXTENSION LINE
- NATIONAL FOREST BOUNDARY
- RESERVATION OR PARK BOUNDARY
- STATE FOREST BOUNDARY
- FEDERAL GAMLAND BOUNDARY
- MILITARY RESERVATION BOUNDARY
- STATE LINE
- COUNTY LINE
- CITY LIMIT
- FERRY ROUTE
- CANAL
- NARROW CREEK OR STREAM
- WIDE RIVER OR CREEK
- RESERVOIR, POND OR LAKE W/ ISLAND
- DAM OR DAM WITH LOCK
- WATERFALL
- SWAMP
- COMMUNITY, TOWN OR CITY CENTER
- COUNTY SEAT
- STATE CAPITAL
- SCHOOL
- COLLEGE OR UNIVERSITY
- HOSPITAL
- COAST GUARD STATION
- CHURCH
- CHURCH WITH CEMETERY
- CEMETERY
- PATROL STATION
- CORRECTION OR PENAL INSTITUTION
- QUARRY
- MINE OR PIT
- HIGHWAY GARAGE OR MAINT. YARD
- HIGHWAY DIV. OR DIST. OFFICE
- POST OFFICE
- MILITARY POST
- WILDLIFE REFUGE
- WEIGH STATION
- FAIRGROUNDS
- HISTORICAL SITE
- POINTS OF INTEREST
- STATE FOREST
- LIGHTHOUSE
- MOUNTAIN GAP
- MOUNTAIN SUMMIT
- OVERLOOK
- GEODETIC MARKER
- REST AREA
- VISITOR CENTER AREA
- WELCOME CENTER AREA
- MAJOR AIRPORT
- MILITARY AIRPORT
- HELIPORT



**2016 AADT**  
ANNUAL AVERAGE DAILY TRAFFIC  
GENERATED BY THE  
TRAFFIC SURVEY GROUP  
TRANSPORTATION PLANNING BRANCH

**TRANSYLVANIA COUNTY**  
NORTH CAROLINA

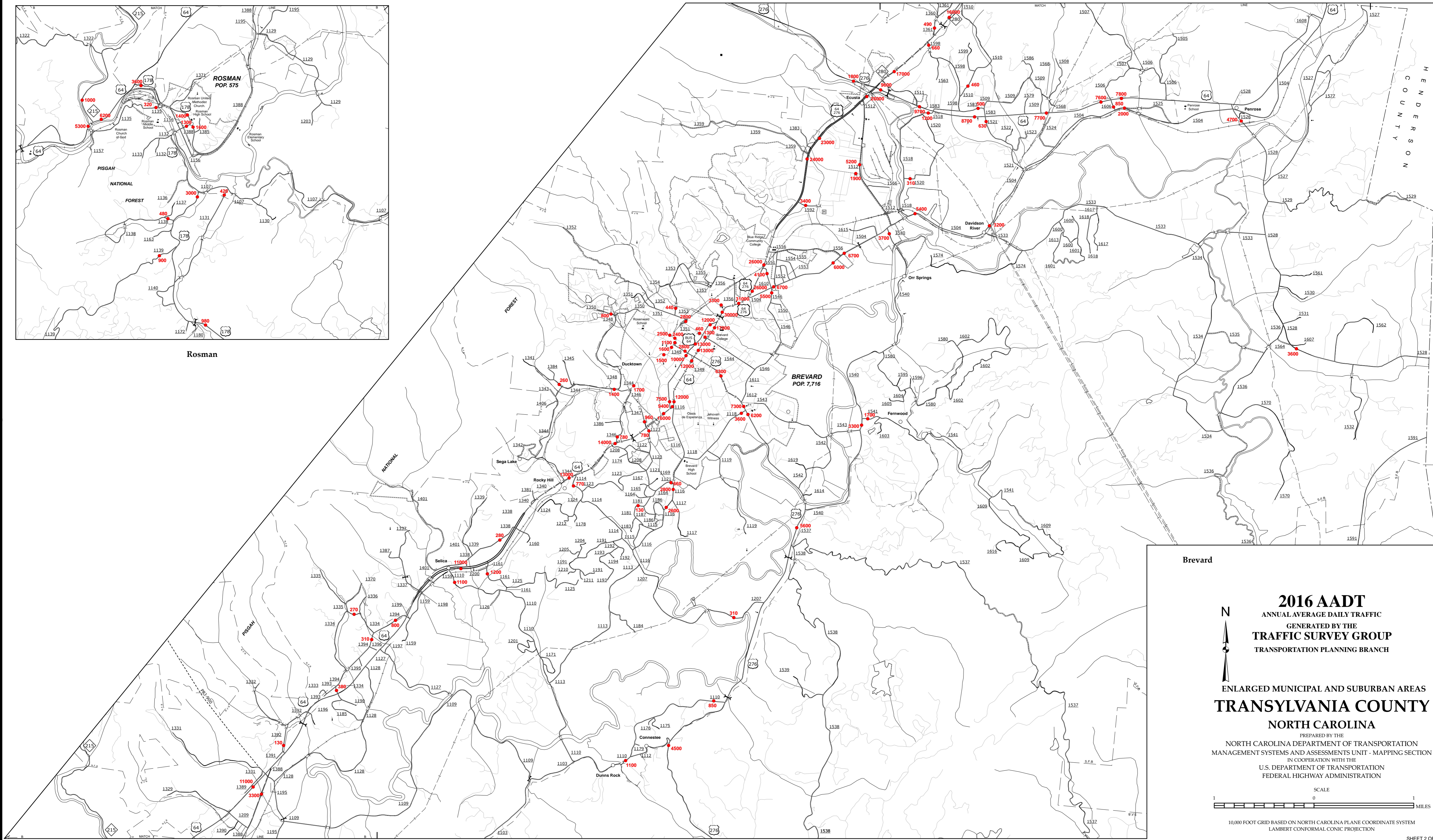
PREPARED BY THE  
NORTH CAROLINA DEPARTMENT OF TRANSPORTATION  
MANAGEMENT SYSTEMS AND ASSESSMENTS UNIT - MAPPING SECTION  
IN COOPERATION WITH THE  
U.S. DEPARTMENT OF TRANSPORTATION  
FEDERAL HIGHWAY ADMINISTRATION



SCALE FOR ENLARGEMENTS  
10,000 FOOT GRID BASED ON NORTH CAROLINA PLANE COORDINATE SYSTEM  
LAMBERT CONFORMAL CONIC PROJECTION

The MSAT's goal is to provide the most accurate and current information possible. Map data is compiled from numerous sources with varying dates of publication and map accuracy standards. As a result, the information shown on this map was last updated on August, 2017. For additional information, visit <http://www.ncdot.gov>. The information shown on this map was last updated on August, 2017. For additional information, visit <http://www.ncdot.gov>. The information shown on this map was last updated on August, 2017. For additional information, visit <http://www.ncdot.gov>.

COPIES OF THIS MAP ARE AVAILABLE TO THE PUBLIC AT NOMINAL COST. ADDRESS: N.C. DEPARTMENT OF TRANSPORTATION, 4809 BERRY RD, RALEIGH, NC 27608



Rosman

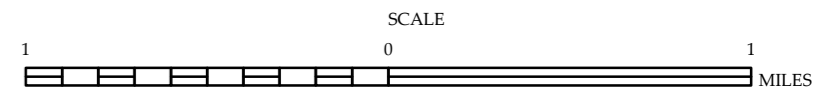
BREVARD POP. 7,716

Brevard

**2016 AADT**  
ANNUAL AVERAGE DAILY TRAFFIC  
GENERATED BY THE  
**TRAFFIC SURVEY GROUP**  
TRANSPORTATION PLANNING BRANCH

ENLARGED MUNICIPAL AND SUBURBAN AREAS  
**TRANSYLVANIA COUNTY**  
NORTH CAROLINA

PREPARED BY THE  
NORTH CAROLINA DEPARTMENT OF TRANSPORTATION  
MANAGEMENT SYSTEMS AND ASSESSMENTS UNIT - MAPPING SECTION  
IN COOPERATION WITH THE  
U.S. DEPARTMENT OF TRANSPORTATION  
FEDERAL HIGHWAY ADMINISTRATION



10,000 FOOT GRID BASED ON NORTH CAROLINA PLANE COORDINATE SYSTEM  
LAMBERT CONFORMAL CONIC PROJECTION