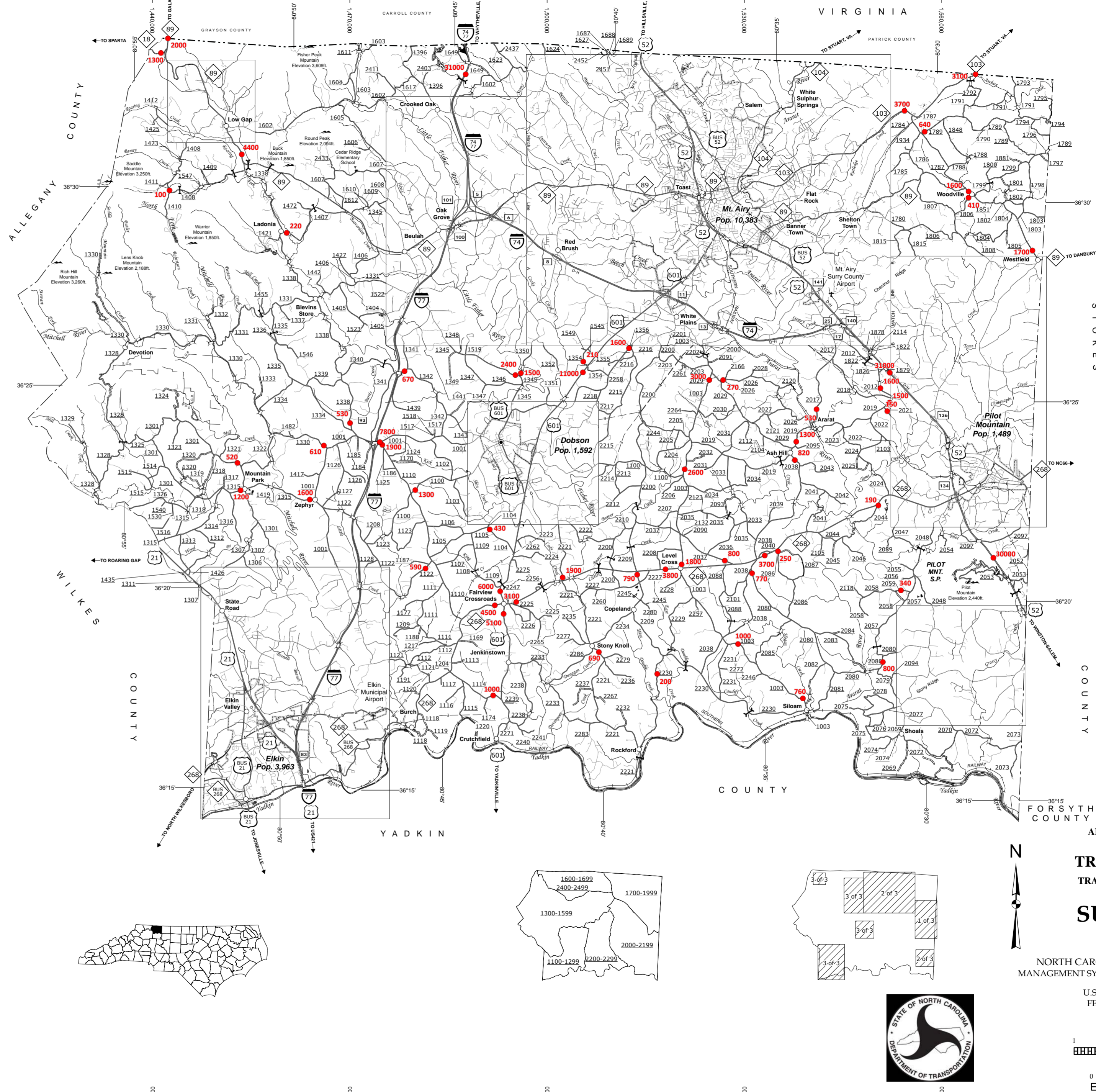


Pilot Mountain and Vicinity



**LEGEND**

- UNPAVED SURFACED ROAD
- HARD SURFACED ROAD
- DIVIDED HIGHWAY W/FRONTAGE ROADS
- 4 LANE UNDIVIDED HIGHWAY
- DIVIDED HIGHWAY INSET
- FULL CONTROL ACCESS
- NON-SYSTEM ROADS
- PROJECTED LOCATION
- NATIONAL PARK ROAD
- BLUE RIDGE PARKWAY
- INTERSECTION DISTANCE
- TRAFFIC CIRCLE
- DETAILED HIGHWAY INTERCHANGE
- ROAD THROUGH MOUNTAIN PASS
- HIGHWAY BRIDGE
- UNDERPASS
- OVERPASS
- DRAW SPAN ON BRIDGE
- HIGHWAY TUNNEL
- FORD
- INTERSTATE HIGHWAY
- U.S. NUMBERED HIGHWAY
- N.C. NUMBERED HIGHWAY
- U.S. NUMBERED BICYCLE ROUTE
- N.C. NUMBERED BICYCLE ROUTE
- INTERSTATE INTERCHANGE NUMBER
- SECONDARY ROAD NUMBER
- UTILITY LINES
- RAILROAD
- RAILROAD STATION
- GRADE CROSSING
- INSET AREA
- URBAN EXTENSION LINE
- NATIONAL FOREST BOUNDARY
- RESERVATION OR PARK BOUNDARY
- STATE FOREST BOUNDARY
- STATE GAMELAND BOUNDARY
- FEDERAL GAMELAND BOUNDARY
- MILITARY RESERVATION BOUNDARY
- STATE LINE
- COUNTY LINE
- CITY LIMIT
- FERRY ROUTE
- CANAL
- NARROW CREEK OR STREAM
- WIDE RIVER OR CREEK
- RESERVOIR, POND OR LAKE W/ ISLAND
- DAM OR DAM WITH LOCK
- WATERFALL
- SWAMP
- COMMUNITY TOWN OR CITY CENTER
- COUNTY SEAT
- STATE CAPITAL
- SCHOOL
- COLLEGE OR UNIVERSITY
- HOSPITAL
- COAST GUARD STATION
- CHURCH
- CHURCH WITH CEMETERY
- CEMETERY
- PATROL STATION
- CORRECTION OR PENAL INSTITUTION
- QUARRY
- MINE OR PIT
- HIGHWAY GARAGE OR MAINT. YARD
- HIGHWAY DIV. OR DIST. OFFICE
- POST OFFICE
- MILITARY POST
- WILDLIFE REFUGE
- WEIGH STATION
- FAIRGROUNDS
- HISTORICAL SITE
- POINTS OF INTEREST
- STATE FOREST LIGHTHOUSE
- MOUNTAIN GAP
- MOUNTAIN SUMMIT
- OVERLOOK
- GEODETIC MARKER
- REST AREA
- VISITOR CTR/REST AREA
- WELCOME CTR/REST AREA
- MAJOR AIRPORT
- AIRPORT
- MILITARY AIRPORT
- HELIPORT

**2016 AADT**  
ANNUAL AVERAGE DAILY TRAFFIC  
GENERATED BY THE  
TRAFFIC SURVEY GROUP  
TRANSPORTATION PLANNING BRANCH

**SURRY COUNTY**  
NORTH CAROLINA

PREPARED BY THE  
NORTH CAROLINA DEPARTMENT OF TRANSPORTATION  
MANAGEMENT SYSTEMS AND ASSESSMENTS UNIT - MAPPING SECTION  
IN COOPERATION WITH THE  
U.S. DEPARTMENT OF TRANSPORTATION  
FEDERAL HIGHWAY ADMINISTRATION

SCALE

1 0 1 2 3 4  
MILES

0 0.5 1  
MILES

SCALE FOR ENLARGEMENTS

10,000 FOOT GRID BASED ON NORTH CAROLINA PLANE COORDINATE SYSTEM  
LAMBERT CONFORMAL CONIC PROJECTION

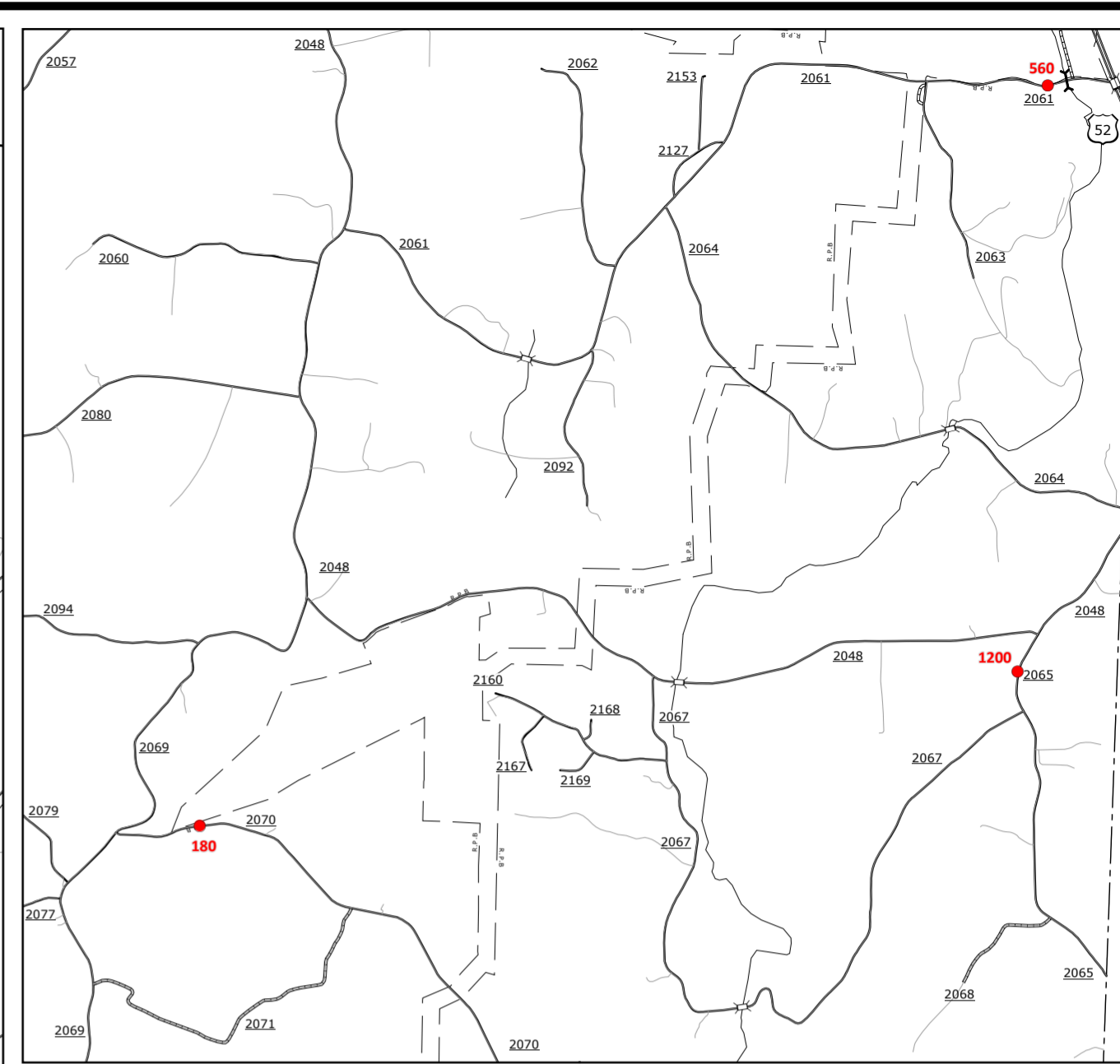
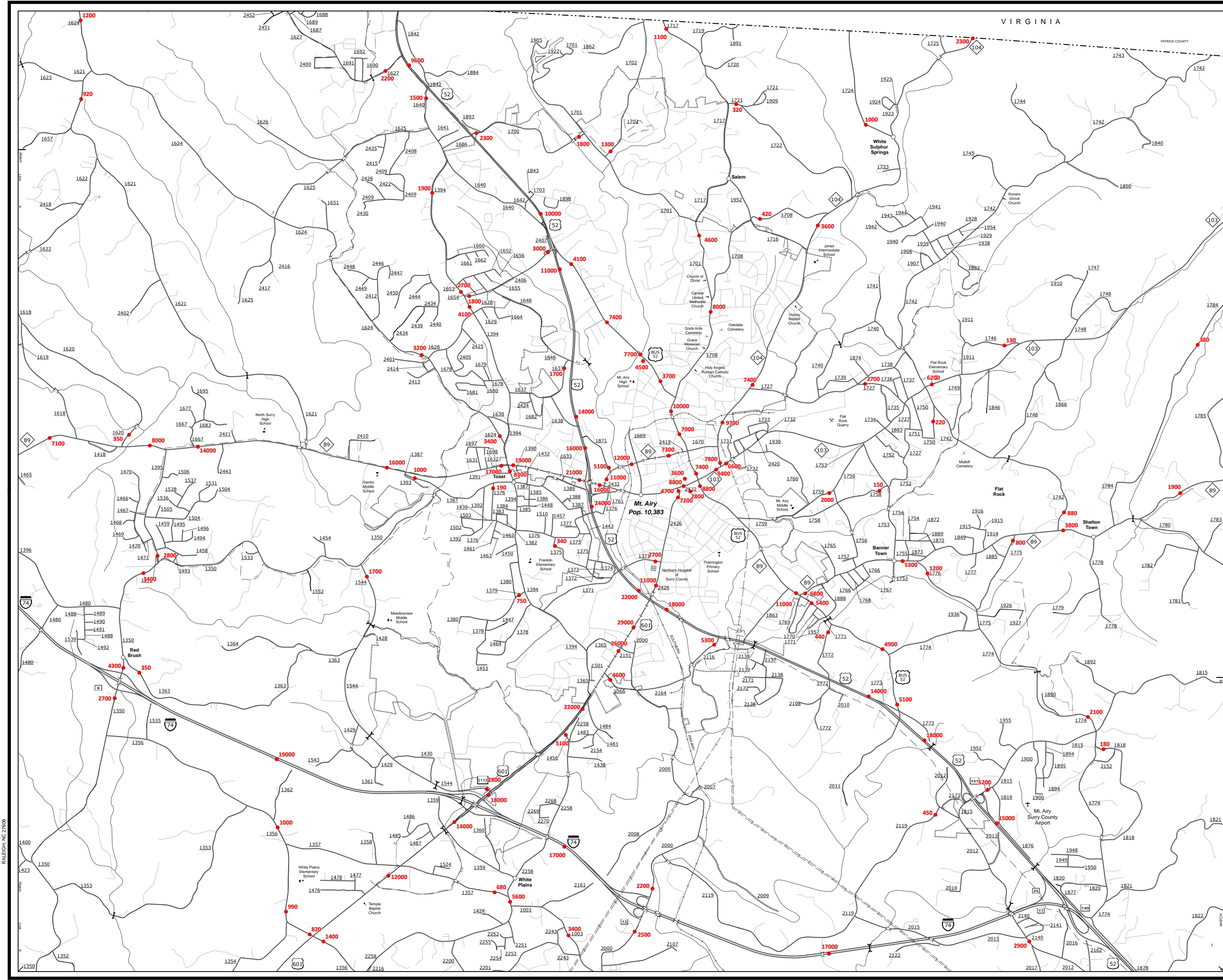
SHEET 1 OF 3

COPIES OF THIS MAP ARE AVAILABLE TO THE PUBLIC AT NOMINAL COST. ADDRESS: N.C. DEPARTMENT OF TRANSPORTATION, MANAGEMENT SYSTEMS AND ASSESSMENTS UNIT, 4800 BERRY LANE, RALEIGH, NC 27606.

The NCHRP goal is to provide the most accurate and current information possible. Map data is compiled from numerous sources with varying dates of publication and map accuracy standards. As a result, the accuracy, currency and completeness of the data provided will vary. Map includes state-maintained roads. The information shown on this map was last updated on August, 2017. For additional information, visit <http://www.ncdot.gov/transportation> and click on Data Providers or contact us at (919) 935-5480.

The results of this map are available to the public at nominal cost. The information shown on this map was last updated on August, 2017. For additional information, visit <http://www.ncdot.gov/transportation> and click on Data Providers or contact us at (919) 835-5801.

COPIES OF THIS MAP ARE AVAILABLE TO THE PUBLIC AT NOMINAL COST. ADDRESS: N.C. DEPARTMENT OF TRANSPORTATION MANAGEMENT SYSTEMS AND ASSESSMENTS UNIT - MAPPING SECTION 4609 BERRY LANE RALEIGH, NC 27606



Inset 1

MT. Airy and Vicinity

**2016 AADT**  
ANNUAL AVERAGE DAILY TRAFFIC  
GENERATED BY THE  
**TRAFFIC SURVEY GROUP**  
TRANSPORTATION PLANNING BRANCH

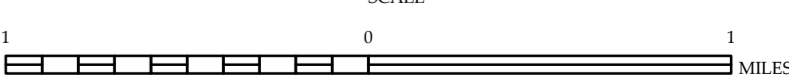
ENLARGED MUNICIPAL AND SUBURBAN AREAS  
**SURRY COUNTY**  
NORTH CAROLINA

PREPARED BY THE  
NORTH CAROLINA DEPARTMENT OF TRANSPORTATION  
MANAGEMENT SYSTEMS AND ASSESSMENTS UNIT - MAPPING SECTION  
IN COOPERATION WITH THE  
U.S. DEPARTMENT OF TRANSPORTATION  
FEDERAL HIGHWAY ADMINISTRATION

SCALE  
1 0 1 MILES

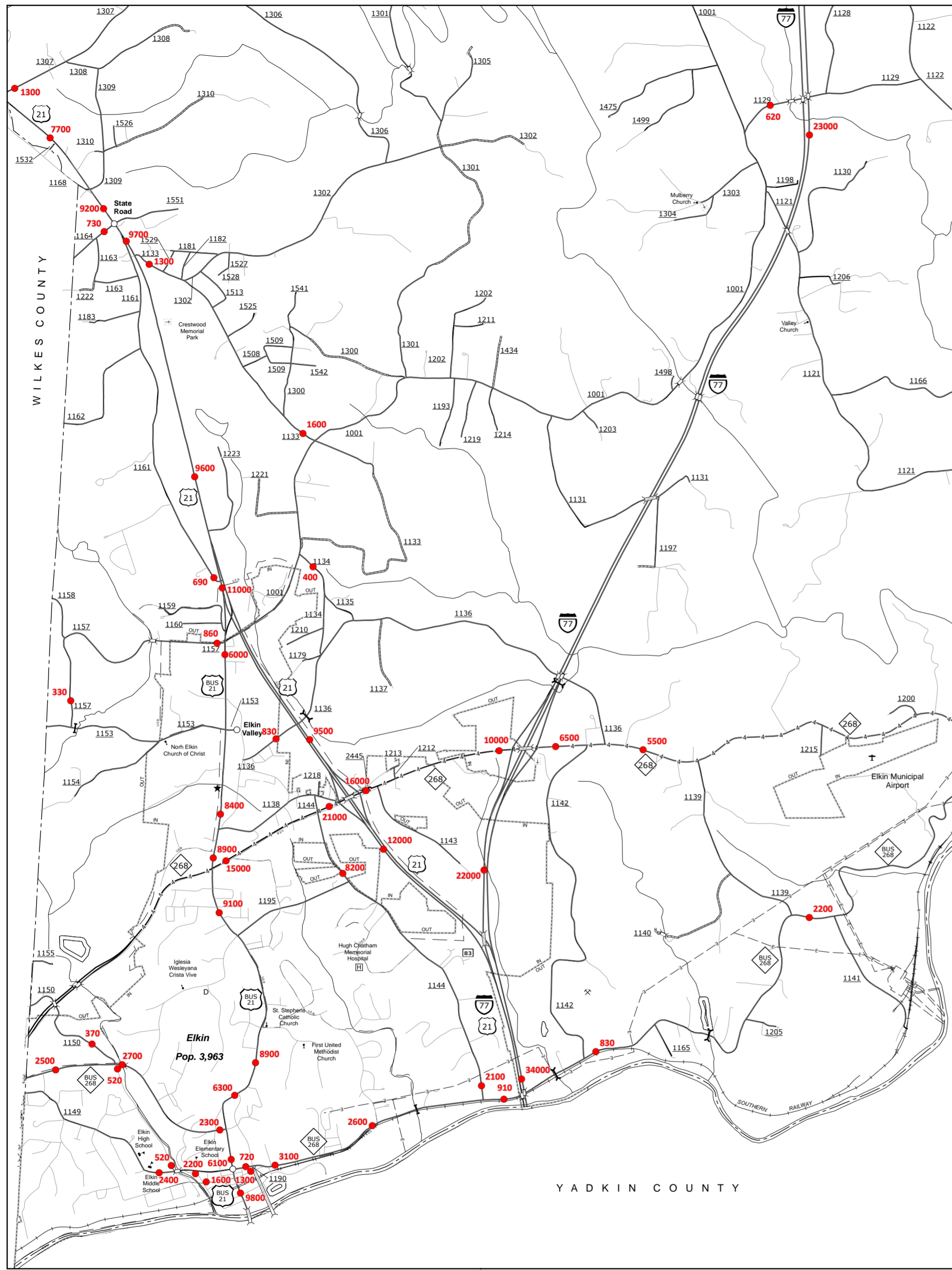
10,000 FOOT GRID BASED ON NORTH CAROLINA PLANE COORDINATE SYSTEM  
LAMBERT CONFORMAL CONIC PROJECTION

SHEET 2 OF 3

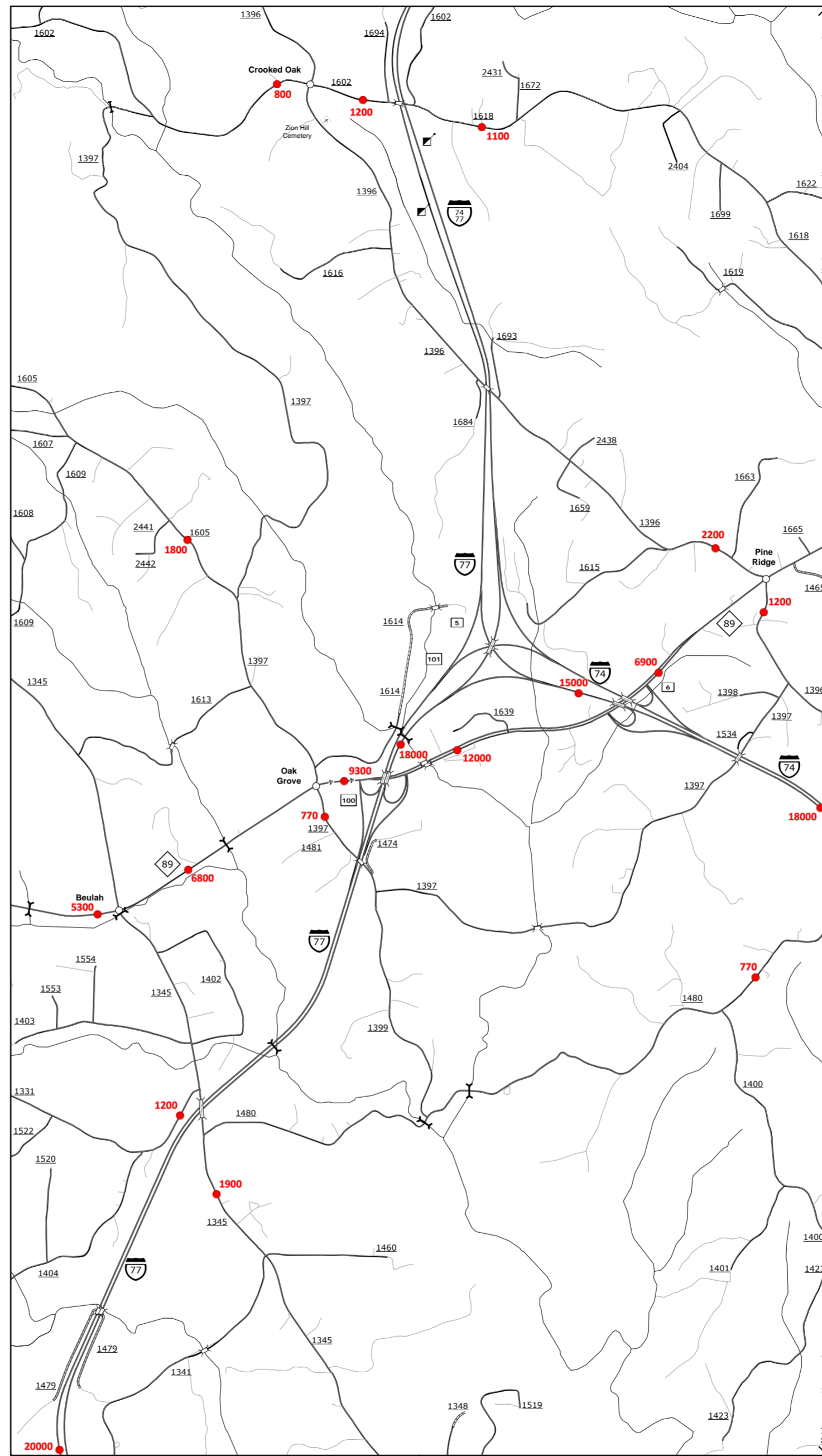


10,000 FOOT GRID BASED ON NORTH CAROLINA PLANE COORDINATE SYSTEM  
LAMBERT CONFORMAL CONIC PROJECTION

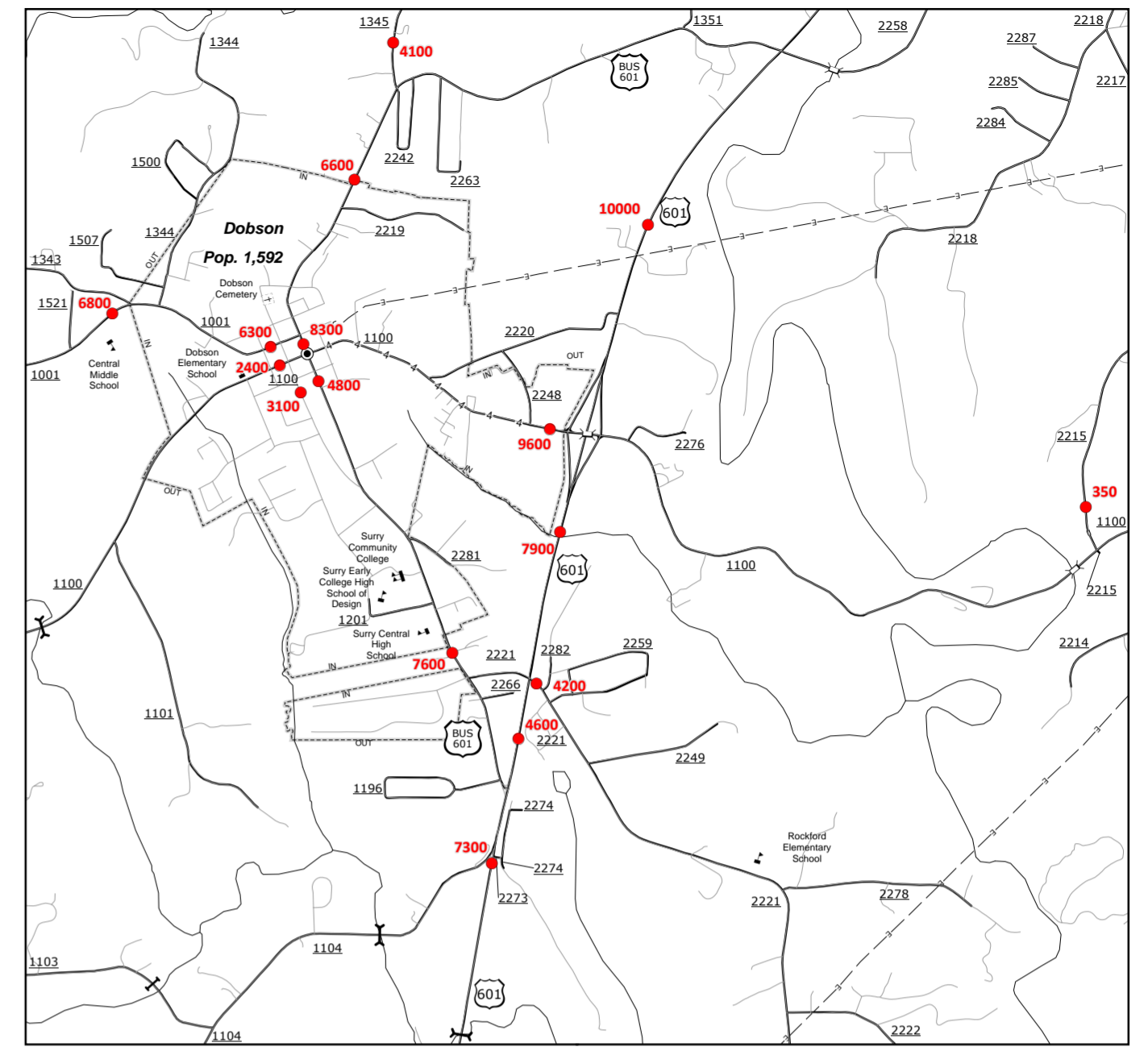
COPIES OF THIS MAP ARE AVAILABLE FOR PURCHASE AT A COST OF \$10 PER COPY. ADDRESS: N.C. DEPARTMENT OF TRANSPORTATION, 4000 BERRY RD., RALEIGH, NC 27668



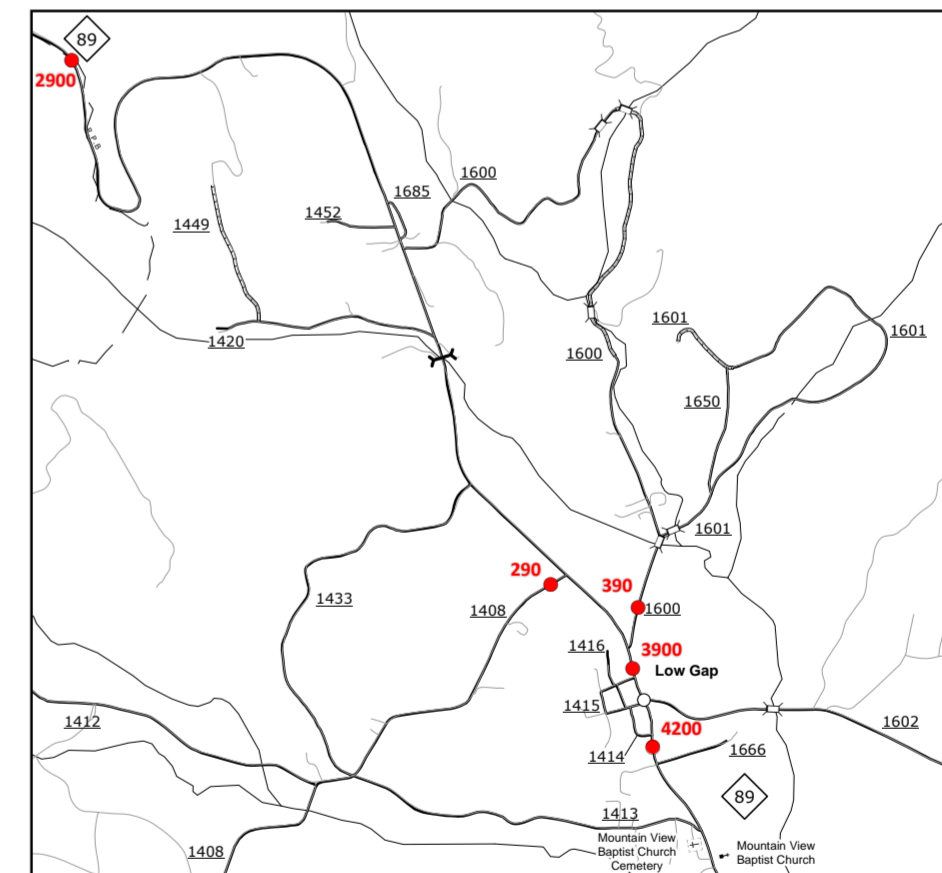
Elkin and Vicinity



Oak Grove



Dobson and Vicinity



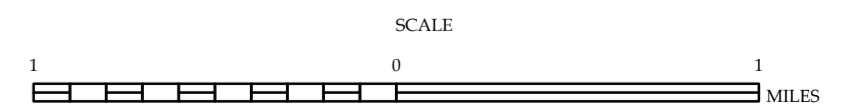
Lowgap and Vicinity



ENLARGED MUNICIPAL AND SUBURBAN AREAS  
**SURRY COUNTY**  
NORTH CAROLINA

PREPARED BY THE  
NORTH CAROLINA DEPARTMENT OF TRANSPORTATION  
MANAGEMENT SYSTEMS AND ASSESSMENTS UNIT - MAPPING SECTION  
IN COOPERATION WITH THE  
U.S. DEPARTMENT OF TRANSPORTATION  
FEDERAL HIGHWAY ADMINISTRATION

**2016 AADT**  
ANNUAL AVERAGE DAILY TRAFFIC  
GENERATED BY THE  
**TRAFFIC SURVEY GROUP**  
TRANSPORTATION PLANNING BRANCH



10,000 FOOT GRID BASED ON NORTH CAROLINA PLANE COORDINATE SYSTEM  
LAMBERT CONFORMAL CONIC PROJECTION