

LEGEND

- UNPAVED SURFACED ROAD
- HARD SURFACED ROAD
- 4 LANE UNDIVIDED HIGHWAY
- DIVIDED HIGHWAY INSET
- DIVIDED HIGHWAY W/FRONTAGE ROADS
- FULL CONTROL ACCESS
- NON-SYSTEM ROADS
- PROJECTED LOCATION
- NATIONAL PARK ROAD
- BLUE RIDGE PARKWAY
- INTERSECTION DISTANCE
- TRAFFIC CIRCLE
- DETAILED HIGHWAY INTERCHANGE
- ROAD THROUGH MOUNTAIN PASS
- HIGHWAY BRIDGE
- UNDERPASS
- OVERPASS
- DRAW SPAN ON BRIDGE
- HIGHWAY TUNNEL
- FORD
- INTERSTATE HIGHWAY
- U.S. NUMBERED HIGHWAY
- N.C. NUMBERED HIGHWAY
- U.S. NUMBERED BICYCLE ROUTE
- N.C. NUMBERED BICYCLE ROUTE
- INTERSTATE INTERCHANGE NUMBER
- SECONDARY ROAD NUMBER
- UTILITY LINES
- RAILROAD
- RAILROAD STATION
- GRADE CROSSING
- INSET AREA
- URBAN EXTENSION LINE
- NATIONAL FOREST BOUNDARY
- RESERVATION OR PARK BOUNDARY
- STATE FOREST BOUNDARY
- STATE GAMELAND BOUNDARY
- FEDERAL GAMELAND BOUNDARY
- MILITARY RESERVATION BOUNDARY
- STATE LINE
- COUNTY LINE
- CITY LIMIT
- FERRY ROUTE
- CANAL
- NARROW CREEK OR STREAM
- WIDE RIVER OR CREEK
- RESERVOIR, POND OR LAKE W/ ISLAND
- DAM OR DAM WITH LOCK
- WATERFALL
- SWAMP
- COMMUNITY, TOWN OR CITY CENTER
- COUNTY SEAT
- STATE CAPITAL
- SCHOOL
- COLLEGE OR UNIVERSITY
- HOSPITAL
- COAST GUARD STATION
- CHURCH
- CHURCH WITH CEMETERY
- CEMETERY
- PATROL STATION
- CORRECTION OR PENAL INSTITUTION
- QUARRY
- MINE OR PIT
- HIGHWAY DIV. OR DIST. OFFICE
- POST OFFICE
- MILITARY POST
- WILDLIFE REFUGE
- WRECK STATION
- FAIRGROUNDS
- HISTORICAL SITE
- POINTS OF INTEREST
- STATE FOREST
- LIGHTHOUSE
- MOUNTAIN GAP
- MOUNTAIN SUMMIT
- OVERLOOK
- GEODETIC MARKER
- REST AREA
- VISITOR CTR-REST AREA
- WELCOME CTR-REST AREA
- MAJOR AIRPORT
- AIRPORT
- MILITARY AIRPORT
- HELIPORT

NOTE: Maps includes only state-maintenance roads, county and state boundaries provided by state and local agencies, and are shown in their approximate information on this map is current up to August, 2017.

FORSEYTH COUNTY, WINSTON SALEM
 COUNTY PUBLIC WORKS DEPARTMENT
 ADDRESS:
 N.C. DEPARTMENT OF TRANSPORTATION
 NSAU - MAPPING SECTION
 RALEIGH, NC 27608

SEE 2015 WINSTON SALEM URBAN MAP

2016 AADT ANNUAL AVERAGE DAILY TRAFFIC
 GENERATED BY THE
TRAFFIC SURVEY GROUP
 TRANSPORTATION PLANNING BRANCH

FORSYTH COUNTY NORTH CAROLINA

PREPARED BY THE
 NORTH CAROLINA DEPARTMENT OF TRANSPORTATION
 MANAGEMENT SYSTEMS AND ASSESSMENTS UNIT - MAPPING SECTION
 IN COOPERATION WITH THE
 U.S. DEPARTMENT OF TRANSPORTATION
 FEDERAL HIGHWAY ADMINISTRATION

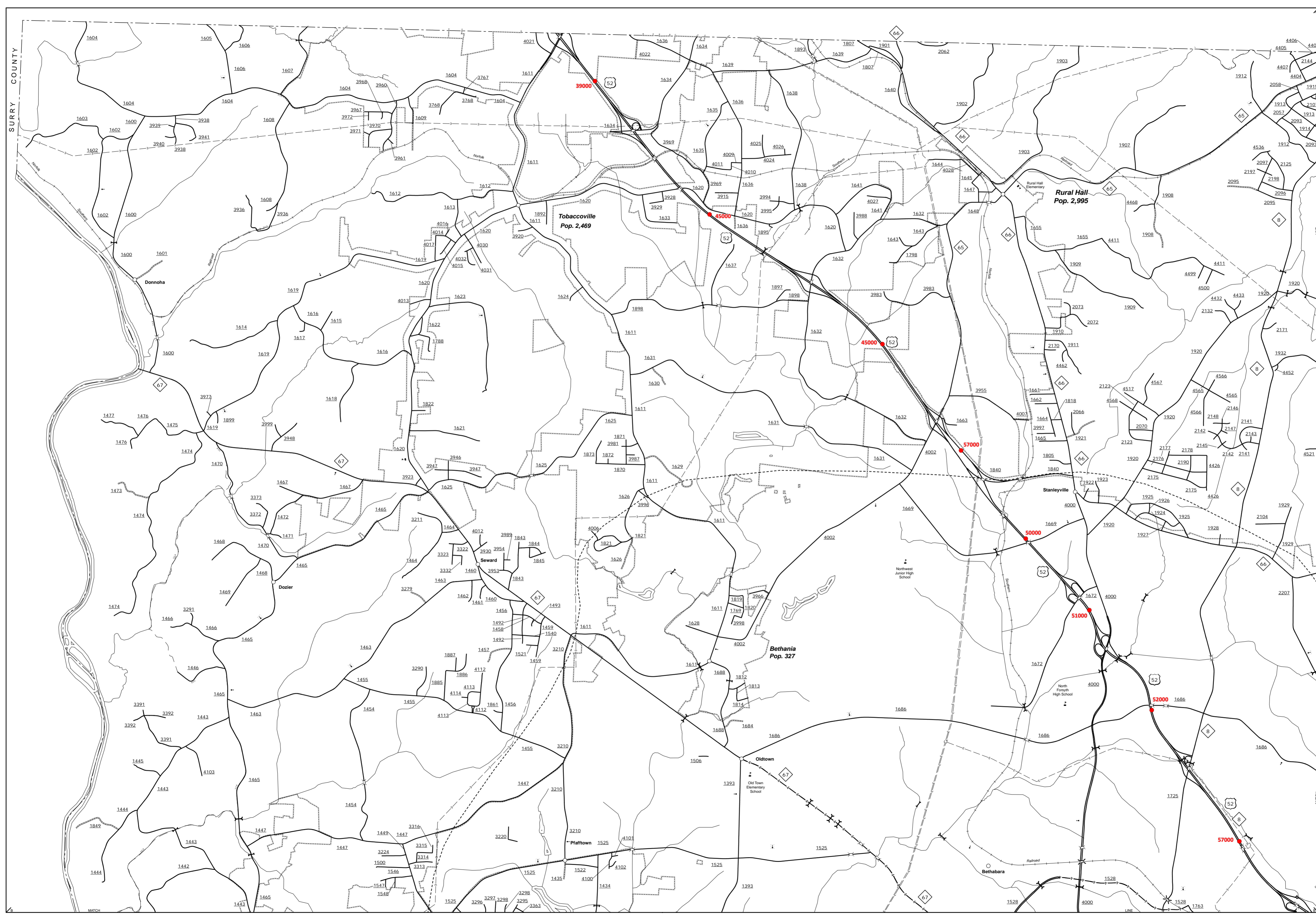
SCALE
 1 0 1 2 3 4 MILES

SCALE FOR ENLARGEMENTS
 0 0.5 1 MILES

10,000 FOOT GRID BASED ON NORTH CAROLINA PLANE COORDINATE SYSTEM
 LAMBERT CONFORMAL CONIC PROJECTION

DIVISION 9 DISTRICT 2 FORSEYTH COUNTY NORTH CAROLINA

SHEET 1 OF 6



Rural Hall And Stanleyville

**SEE 2015
WINSTON SALEM
URBAN MAP**

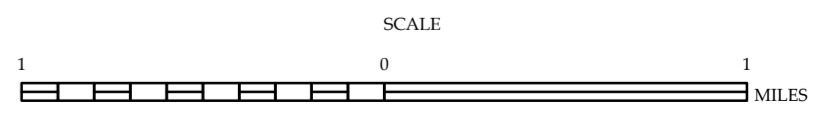
2016 AADT
ANNUAL AVERAGE DAILY TRAFFIC
GENERATED BY THE
TRAFFIC SURVEY GROUP
TRANSPORTATION PLANNING BRANCH



ENLARGED MUNICIPAL AND SUBURBAN AREAS

**FORSYTH COUNTY
NORTH CAROLINA**

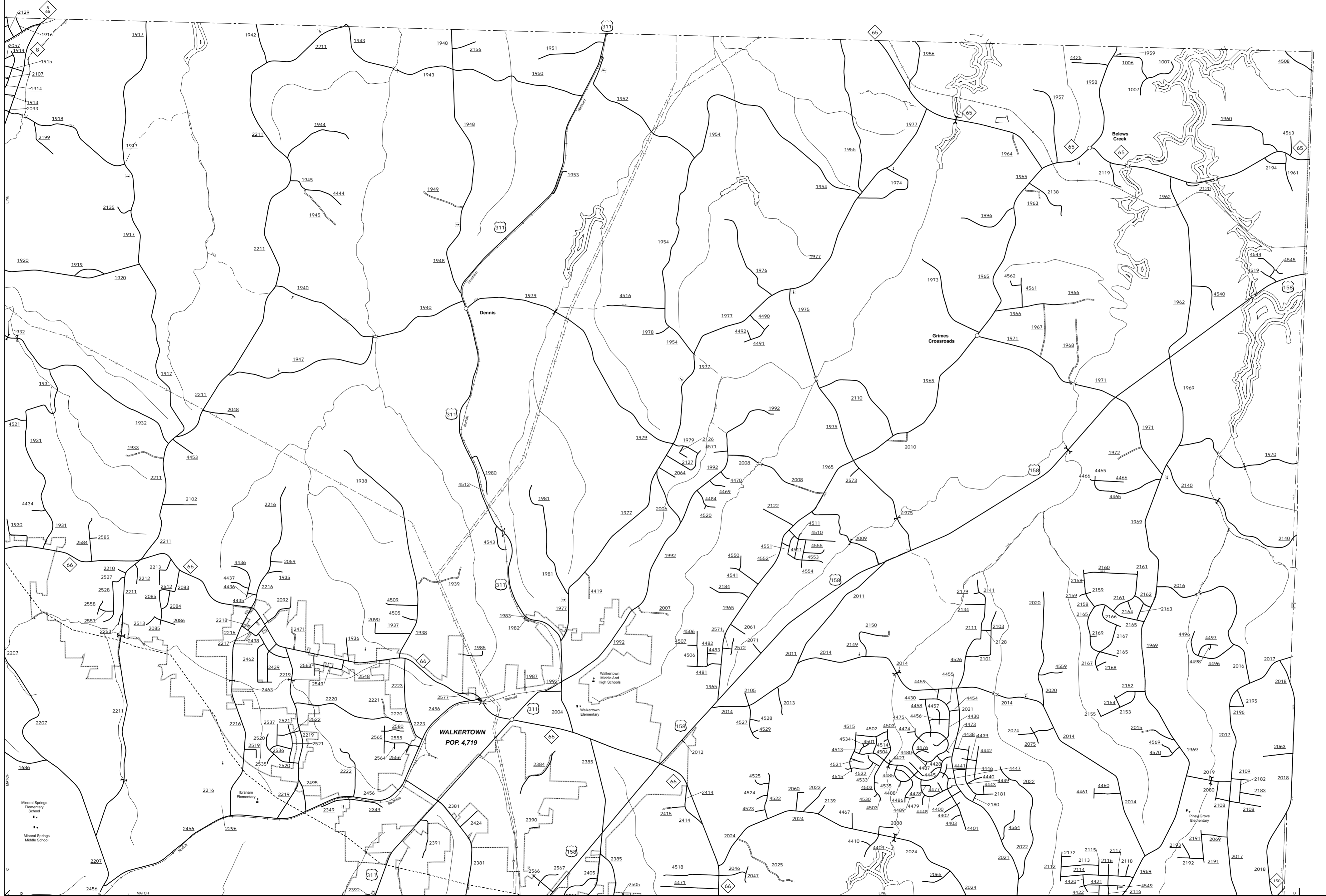
PREPARED BY THE
NORTH CAROLINA DEPARTMENT OF TRANSPORTATION
MANAGEMENT SYSTEMS AND ASSESSMENTS UNIT - MAPPING SECTION
IN COOPERATION WITH THE
U.S. DEPARTMENT OF TRANSPORTATION
FEDERAL HIGHWAY ADMINISTRATION



10,000 FOOT GRID BASED ON NORTH CAROLINA PLANE COORDINATE SYSTEM
LAMBERT CONFORMAL CONIC PROJECTION

NOTE: This map includes only state-maintained roads and important non-system roads. Map also includes federal agencies, and are shown in their approximate locations. Information on this map is current up to August, 2017.

COPIES OF THIS MAP ARE AVAILABLE TO THE PUBLIC AT NOMINAL COST.
ADDRESS:
N.C. DEPARTMENT OF TRANSPORTATION
4809 BERYL RD SECTION
RALEIGH, NC 27608



Walkertown And Vicinity

**SEE 2015
WINSTON SALEM
URBAN MAP**

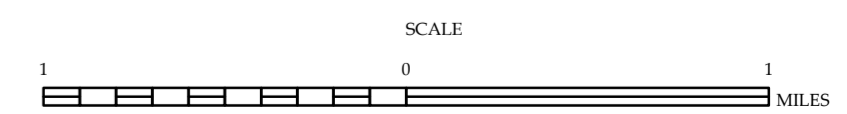
2016 AADT
ANNUAL AVERAGE DAILY TRAFFIC
GENERATED BY THE
TRAFFIC SURVEY GROUP
TRANSPORTATION PLANNING BRANCH



ENLARGED MUNICIPAL AND SUBURBAN AREAS

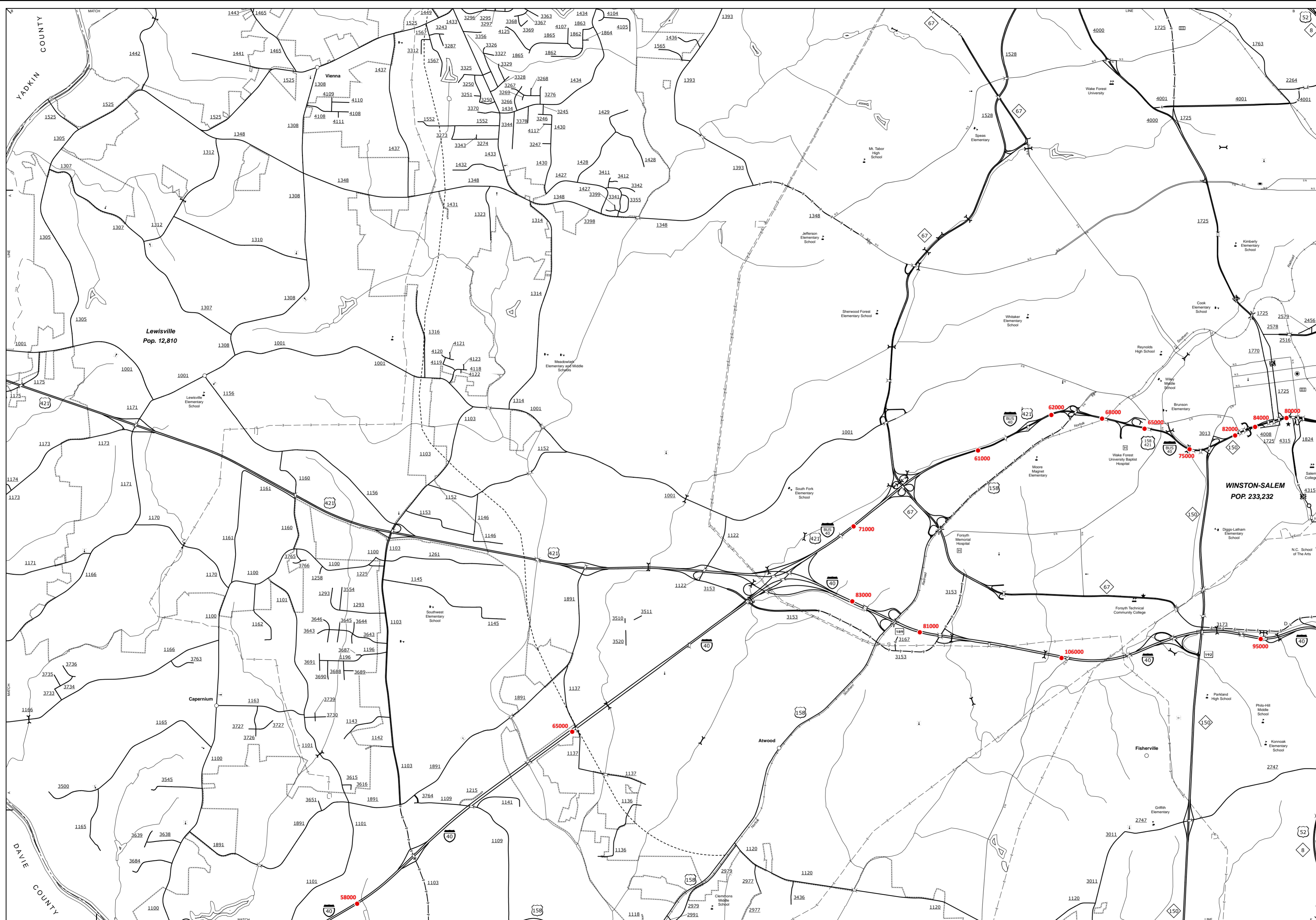
FORSYTH COUNTY
NORTH CAROLINA

PREPARED BY THE
NORTH CAROLINA DEPARTMENT OF TRANSPORTATION
MANAGEMENT SYSTEMS AND ASSESSMENTS UNIT - MAPPING SECTION
IN COOPERATION WITH THE
U.S. DEPARTMENT OF TRANSPORTATION
FEDERAL HIGHWAY ADMINISTRATION



10,000 FOOT GRID BASED ON NORTH CAROLINA PLANE COORDINATE SYSTEM
LAMBERT CONFORMAL CONIC PROJECTION

NOTE: Map includes only state-maintained roads
 county and state boundaries provided by state and
 local agencies, and are shown in their appropriate
 colors. Information on this map is current up to August, 2017.
 MS&U - MAPPING SECTION
 RALEIGH, NC 27608



NOTE: This map includes only state-maintained roads and important non-system roads. Map also includes federal, state, and local roads, but does not show their approximate locations. Information on this map is current up to August, 2017.

COPIES OF THIS MAP ARE AVAILABLE TO THE PUBLIC AT NOMINAL COST. ADDRESS: N.C. DEPARTMENT OF TRANSPORTATION, 4809 BERYL RD., RALEIGH, NC 27608

SEE 2015 WINSTON SALEM URBAN MAP

2016 AADT
ANNUAL AVERAGE DAILY TRAFFIC
GENERATED BY THE
TRAFFIC SURVEY GROUP
TRANSPORTATION PLANNING BRANCH

N

ENLARGED MUNICIPAL AND SUBURBAN AREAS

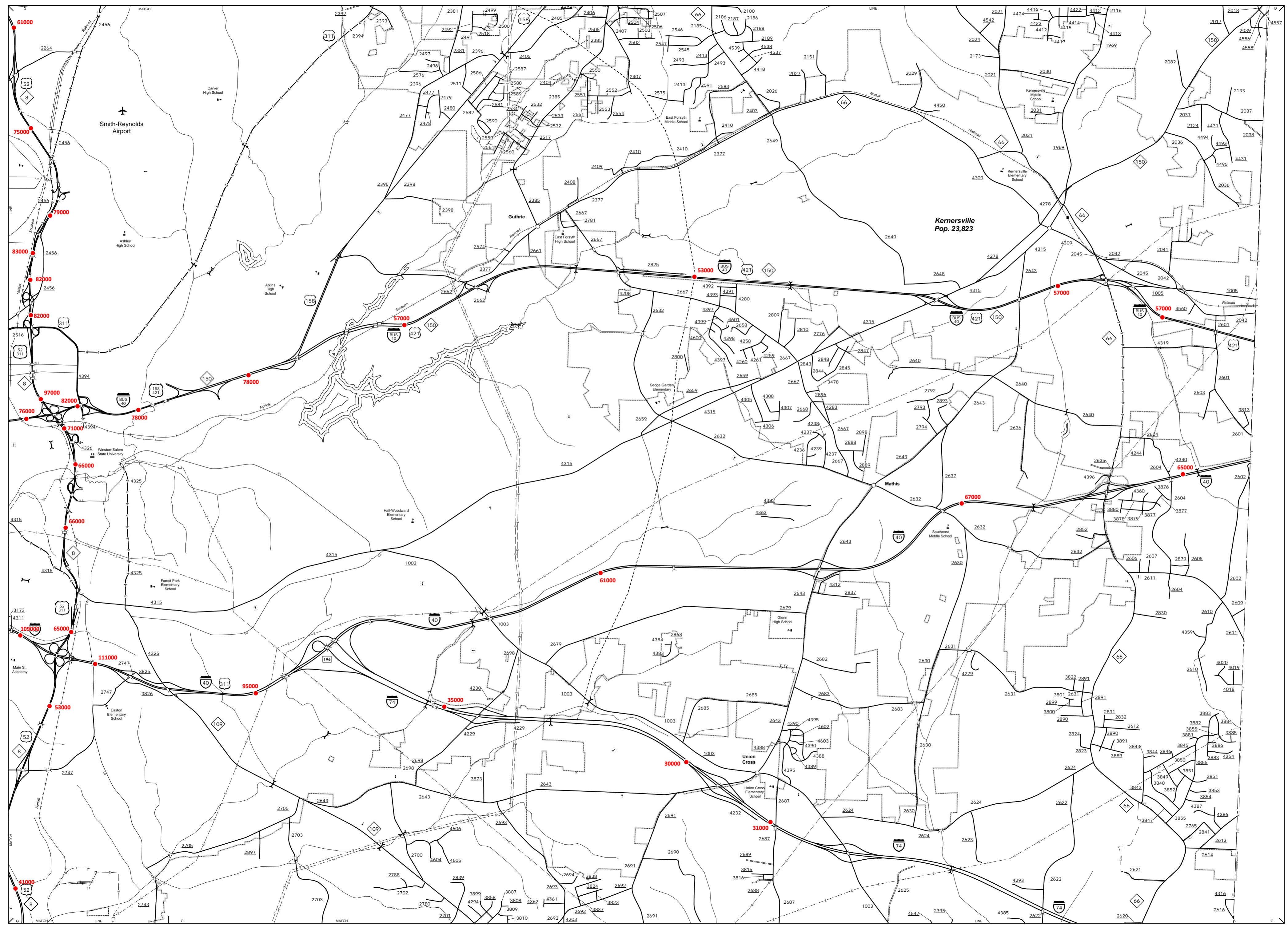
FORSYTH COUNTY
NORTH CAROLINA

PREPARED BY THE
NORTH CAROLINA DEPARTMENT OF TRANSPORTATION
MANAGEMENT SYSTEMS AND ASSESSMENTS UNIT - MAPPING SECTION
IN COOPERATION WITH THE
U.S. DEPARTMENT OF TRANSPORTATION
FEDERAL HIGHWAY ADMINISTRATION

SCALE
0 1 MILES

10,000 FOOT GRID BASED ON NORTH CAROLINA PLANE COORDINATE SYSTEM
LAMBERT CONFORMAL CONIC PROJECTION

SHEET 4 OF 6



Kernersville And Vicinity

**SEE 2015
WINSTON SALEM
URBAN MAP**

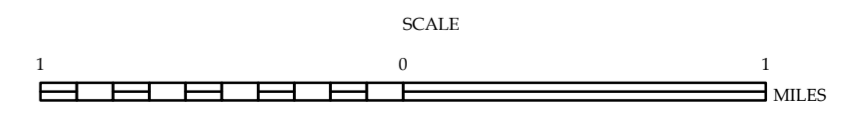


2016 AADT
ANNUAL AVERAGE DAILY TRAFFIC
GENERATED BY THE
TRAFFIC SURVEY GROUP
TRANSPORTATION PLANNING BRANCH

ENLARGED MUNICIPAL AND SUBURBAN AREAS

FORSYTH COUNTY
NORTH CAROLINA

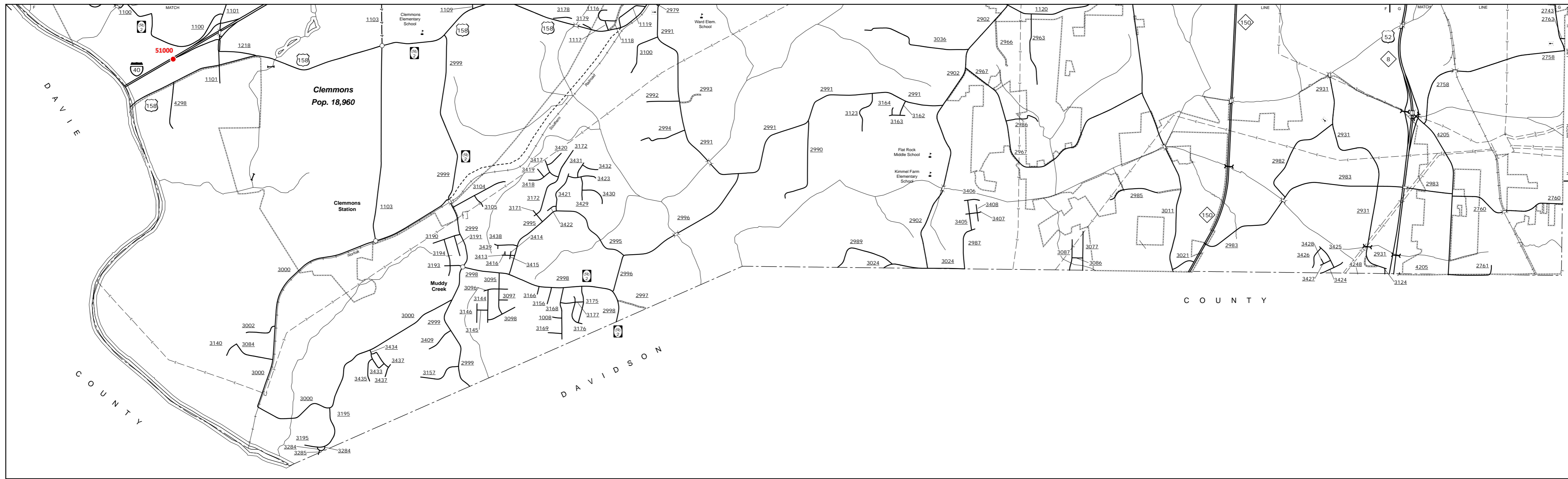
PREPARED BY THE
NORTH CAROLINA DEPARTMENT OF TRANSPORTATION
MANAGEMENT SYSTEMS AND ASSESSMENTS UNIT - MAPPING SECTION
IN COOPERATION WITH THE
U.S. DEPARTMENT OF TRANSPORTATION
FEDERAL HIGHWAY ADMINISTRATION



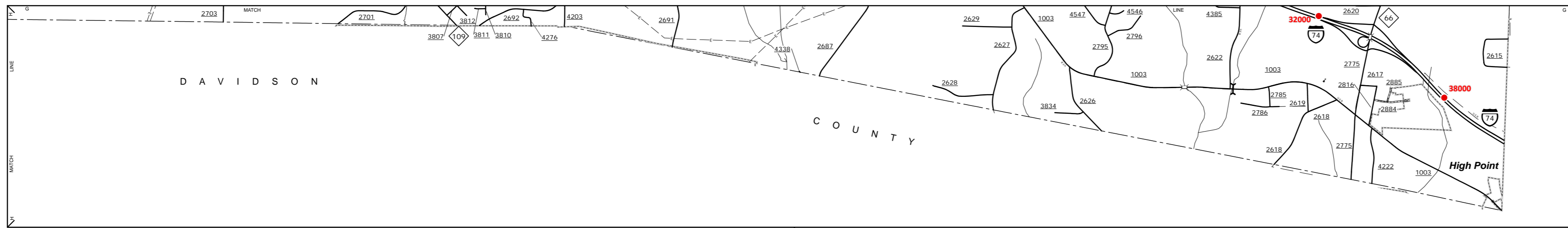
10,000 FOOT GRID BASED ON NORTH CAROLINA PLANE COORDINATE SYSTEM
LAMBERT CONFORMAL CONIC PROJECTION

NOTE: Map includes only state-maintained roads
county and state boundaries provided by state and
local agencies, and are shown in their approximate
locations. Information on this map is current up to August, 2017.

CONTRACT NO. 2015-01-001
DATE OF PUBLICATION: 08/2017
ADDRESS:
N.C. DEPARTMENT OF TRANSPORTATION
MS&A - MAPPING SECTION
RALEIGH, NC 27608



Clemmons



Inset 1

**SEE 2015
WINSTON SALEM
URBAN MAP**

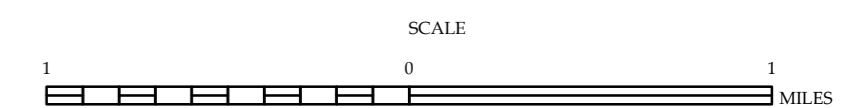
2016 AADT
ANNUAL AVERAGE DAILY TRAFFIC
GENERATED BY THE
TRAFFIC SURVEY GROUP
TRANSPORTATION PLANNING BRANCH



ENLARGED MUNICIPAL AND SUBURBAN AREAS

**FORSYTH COUNTY
NORTH CAROLINA**

PREPARED BY THE
NORTH CAROLINA DEPARTMENT OF TRANSPORTATION
MANAGEMENT SYSTEMS AND ASSESSMENTS UNIT - MAPPING SECTION
IN COOPERATION WITH THE
U.S. DEPARTMENT OF TRANSPORTATION
FEDERAL HIGHWAY ADMINISTRATION



10,000 FOOT GRID BASED ON NORTH CAROLINA PLANE COORDINATE SYSTEM
LAMBERT CONFORMAL CONIC PROJECTION

NOTE: Map includes only state-maintained roads and important non-system roads. May also include county and state boundaries provided by state and local agencies, and are shown in their appropriate locations. Information on this map is current up to August, 2017.

COPIES OF THIS MAP ARE AVAILABLE TO THE PUBLIC AT NOMINAL COST.
N.C. DEPARTMENT OF TRANSPORTATION
MAPPING SECTION
4800 BERRY RD
RALEIGH, NC 27608