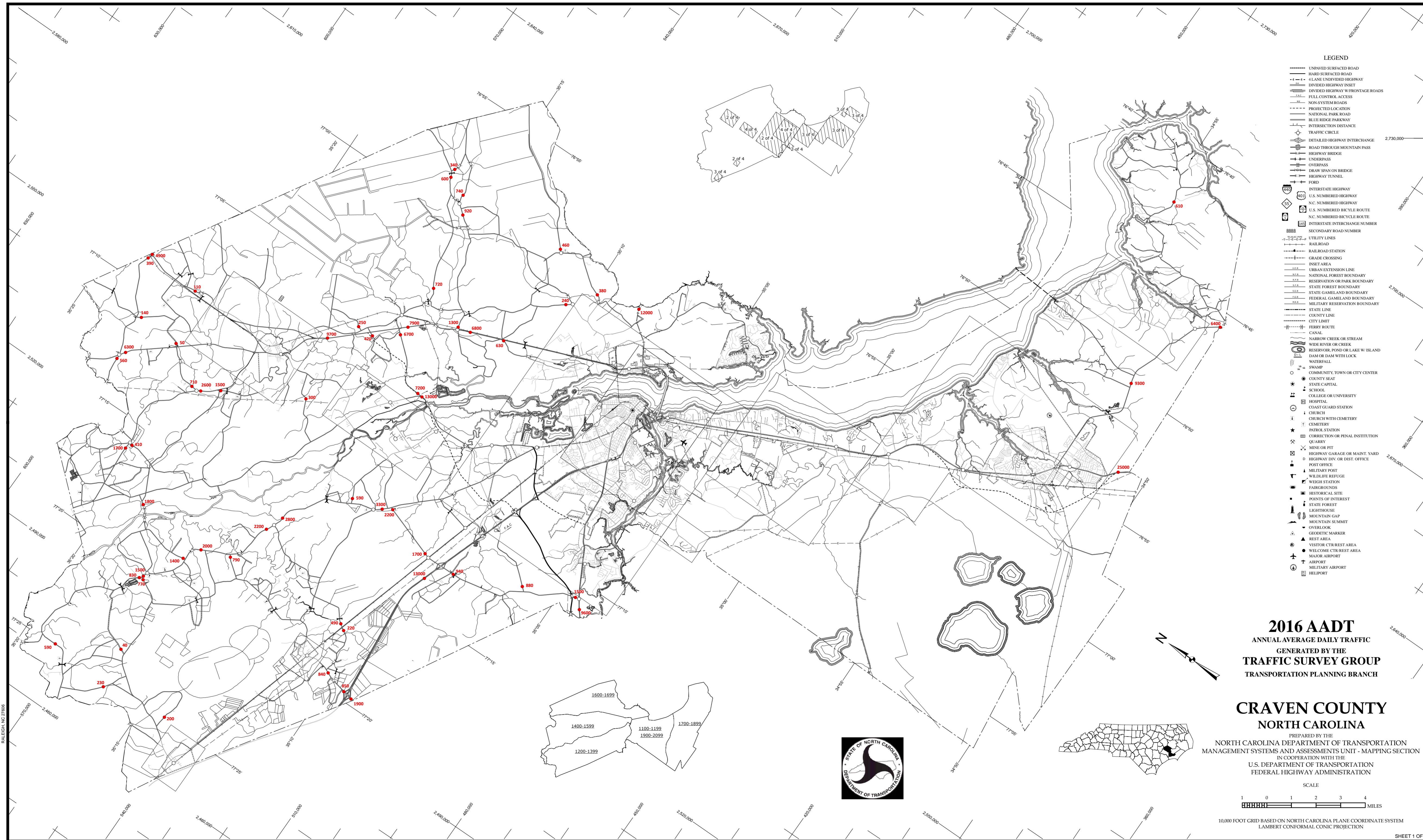


THE MSALTS DATA IS TO PROVIDE THE MOST ACCURATE AND CURRENT INFORMATION POSSIBLE. MAP DATA IS COMPILED FROM NUMEROUS SOURCES WITH VARYING DATES OF PUBLICATION AND MAP ACCURACY STANDARDS. AS A RESULT, THE ACCURACY, CURRENTNESS AND COMPLETENESS OF THE DATA PROVIDED WILL VARY. MAP INCLUDES STATE MAINTAINED ROADS AND FEDERAL MAINTAINED ROADS. THE INFORMATION SHOWN ON THIS MAP WAS LAST UPDATED ON AUGUST, 2017. FOR ADDITIONAL INFORMATION, VISIT <http://www.ncdot.gov/transportation/traffic>, and click on Data Providers or contact us at (919) 835-5480.

COPIES OF THIS MAP ARE AVAILABLE TO THE PUBLIC AT NOMINAL COST. ADDRESS: N.C. DEPARTMENT OF TRANSPORTATION 4809 BERRY RD SECTION RALEIGH, NC 27668

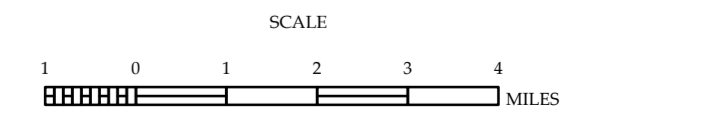


- LEGEND**
- UNPAVED SURFACED ROAD
  - HARD SURFACED ROAD
  - 4 LANE UNDIVIDED HIGHWAY
  - DIVIDED HIGHWAY INSET
  - DIVIDED HIGHWAY W/FRONTAGE ROADS
  - FULL CONTROL ACCESS
  - NON-SYSTEM ROADS
  - PROJECTED LOCATION
  - NATIONAL PARK ROAD
  - BLUE RIDGE PARKWAY
  - INTERSECTION DISTANCE
  - TRAFFIC CIRCLE
  - DETAILED HIGHWAY INTERCHANGE
  - ROAD THROUGH MOUNTAIN PASS
  - HIGHWAY BRIDGE
  - UNDERPASS
  - OVERPASS
  - DRAW SPAN ON BRIDGE
  - HIGHWAY TUNNEL
  - FORD
  - INTERSTATE HIGHWAY
  - U.S. NUMBERED HIGHWAY
  - N.C. NUMBERED HIGHWAY
  - U.S. NUMBERED BICYCLE ROUTE
  - N.C. NUMBERED BICYCLE ROUTE
  - INTERSTATE INTERCHANGE NUMBER
  - SECONDARY ROAD NUMBER
  - UTILITY LINES
  - RAILROAD
  - RAILROAD STATION
  - GRADE CROSSING
  - INSET AREA
  - URBAN EXTENSION LINE
  - NATIONAL FOREST BOUNDARY
  - RESERVATION OR PARK BOUNDARY
  - STATE FOREST BOUNDARY
  - STATE GAMELAND BOUNDARY
  - FEDERAL GAMELAND BOUNDARY
  - MILITARY RESERVATION BOUNDARY
  - STATE LINE
  - COUNTY LINE
  - CITY LIMIT
  - FERRY ROUTE
  - CANAL
  - NARROW CREEK OR STREAM
  - WIDE RIVER OR CREEK
  - RESERVOIR, POND OR LAKE W/ ISLAND
  - DAM OR DAM WITH LOCK
  - WATERFALL
  - SWAMP
  - COMMUNITY, TOWN OR CITY CENTER
  - COUNTY SEAT
  - STATE CAPITAL
  - SCHOOL
  - COLLEGE OR UNIVERSITY
  - HOSPITAL
  - COAST GUARD STATION
  - CHURCH
  - CHURCH WITH CEMETERY
  - CEMETERY
  - PATROL STATION
  - CORRECTION OR PENAL INSTITUTION
  - QUARRY
  - MINE OR PIT
  - HIGHWAY GARAGE OR MAINT. YARD
  - HIGHWAY DIV. OR DIST. OFFICE
  - POST OFFICE
  - MILITARY POST
  - WILDLIFE REFUGE
  - WEIGH STATION
  - FAIRGROUNDS
  - HISTORICAL SITE
  - POINTS OF INTEREST
  - STATE FOREST
  - LIGHTHOUSE
  - MOUNTAIN GAP
  - MOUNTAIN SUMMIT
  - OVERLOOK
  - GEODEIC MARKER
  - REST AREA
  - VISITOR CTR/REST AREA
  - WELCOME CTR/REST AREA
  - MAJOR AIRPORT
  - AIRPORT
  - MILITARY AIRPORT
  - HELIPORT

**2016 AADT**  
 ANNUAL AVERAGE DAILY TRAFFIC  
 GENERATED BY THE  
**TRAFFIC SURVEY GROUP**  
 TRANSPORTATION PLANNING BRANCH

**CRAVEN COUNTY**  
 NORTH CAROLINA

PREPARED BY THE  
 NORTH CAROLINA DEPARTMENT OF TRANSPORTATION  
 MANAGEMENT SYSTEMS AND ASSESSMENTS UNIT - MAPPING SECTION  
 IN COOPERATION WITH THE  
 U.S. DEPARTMENT OF TRANSPORTATION  
 FEDERAL HIGHWAY ADMINISTRATION

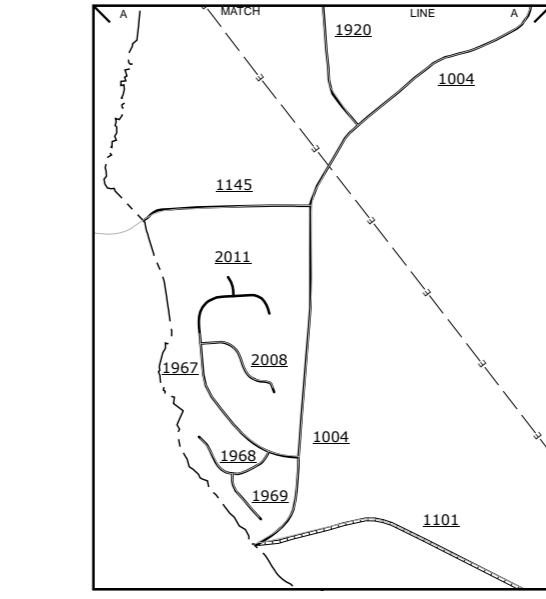
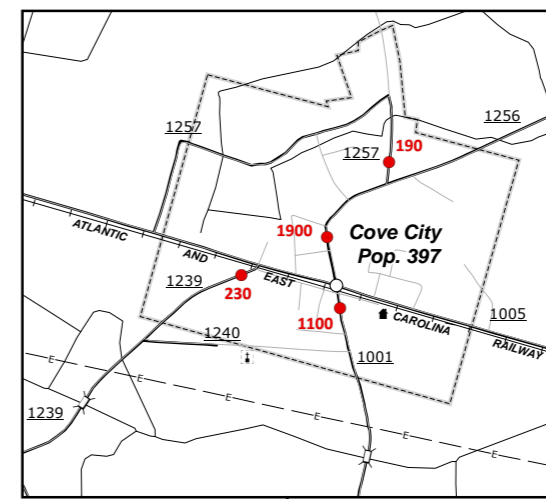
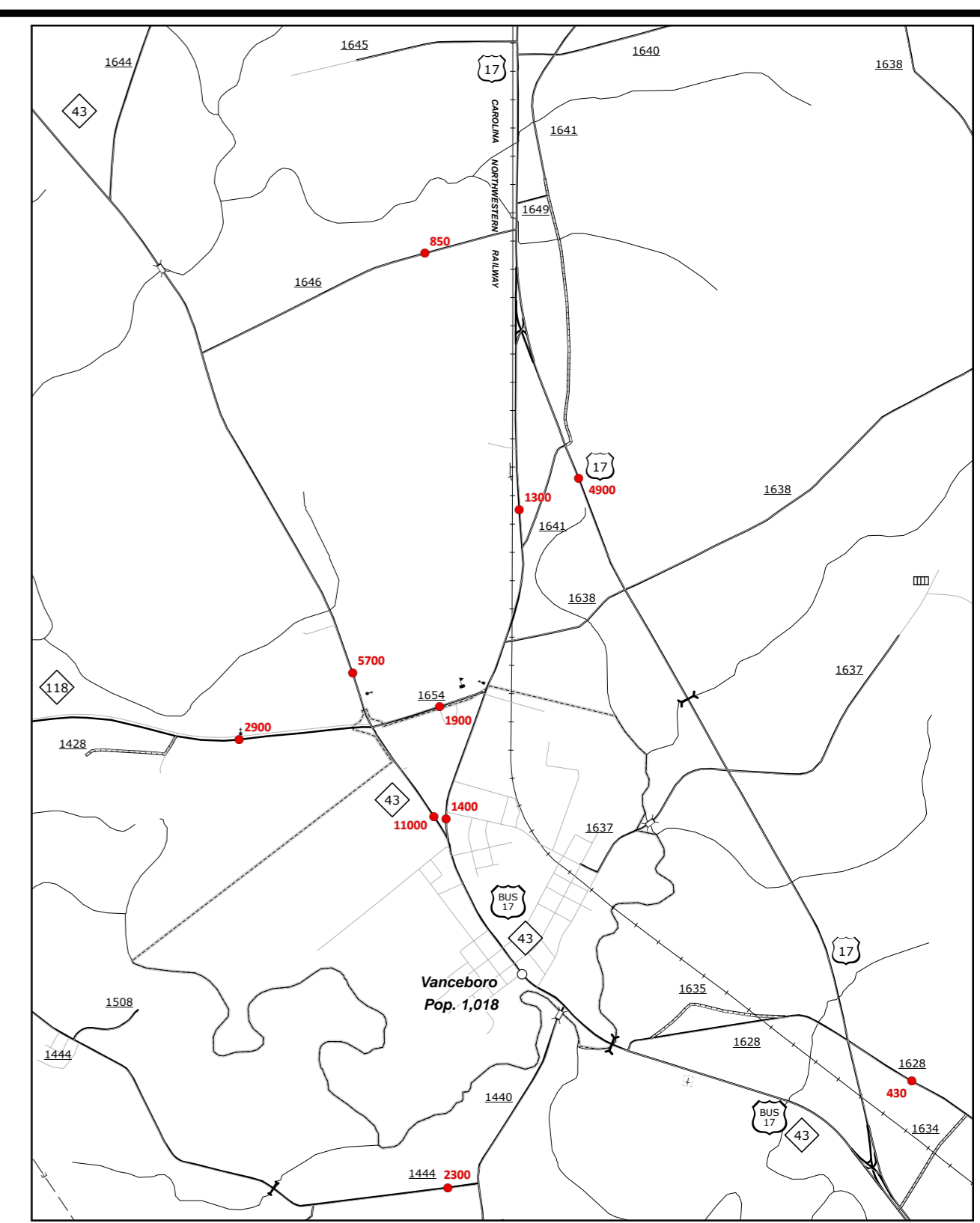
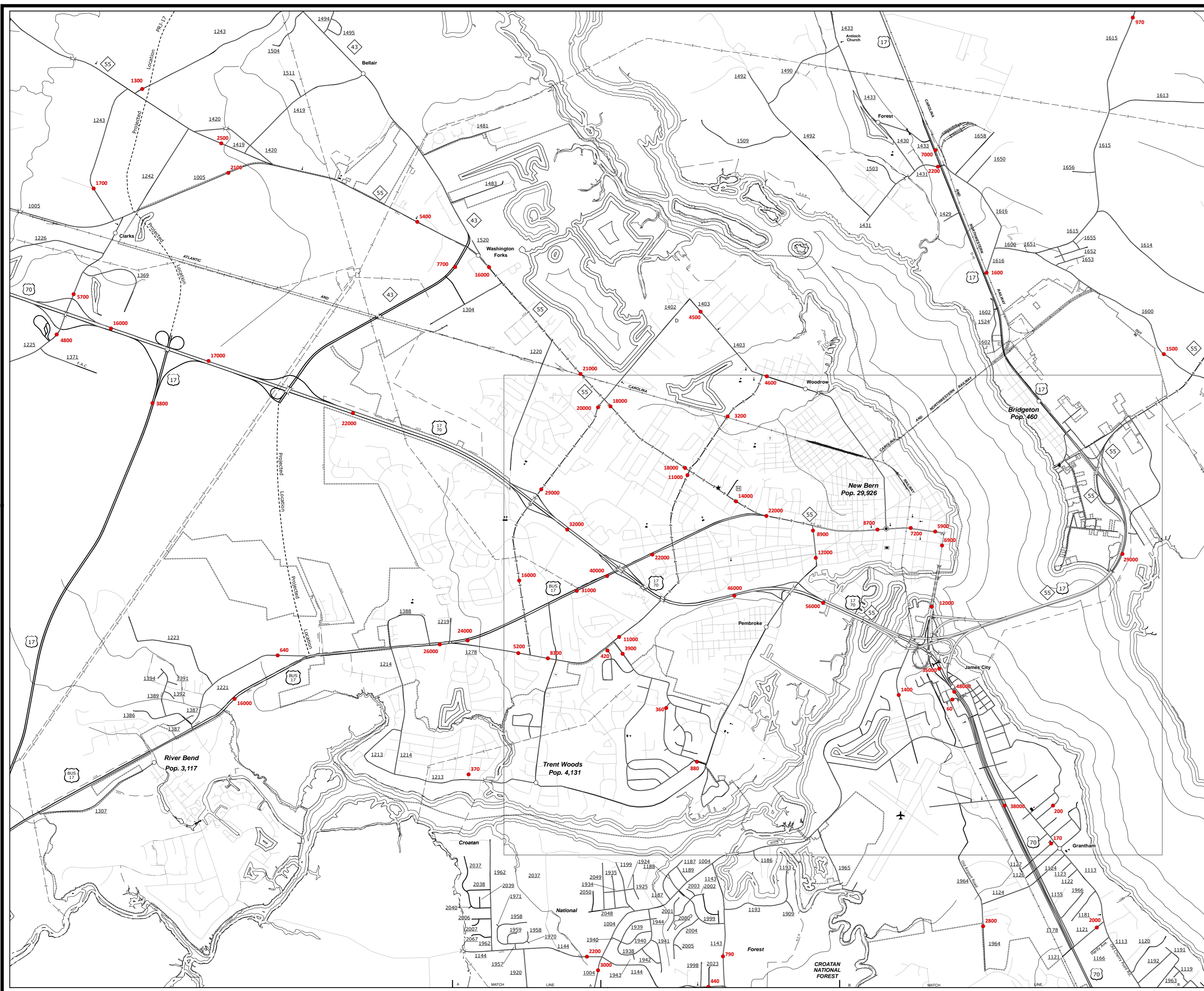


10,000 FOOT GRID BASED ON NORTH CAROLINA PLANE COORDINATE SYSTEM  
 LAMBERT CONFORMAL CONIC PROJECTION



The MS&A is provided to the public for informational purposes only. It is not intended to be used as a legal document. The MS&A is based on the most accurate and current information available. Map data is supplied from numerous sources with varying dates of publication and map accuracy standards. As a result, the accuracy, currency and completeness of the data provided will vary. Maps include state-maintained roads. The information shown on this map was last updated on August, 2017. For additional information, visit <http://www.ncdot.gov/transportation/MS&A.aspx>. Use click on Data Providers or contact us at (919) 855-9440.

COPIES OF THIS MAP ARE AVAILABLE TO THE PUBLIC AT NOMINAL COST. ADDRESS: N.C. DEPARTMENT OF TRANSPORTATION MS&A-MAPPING SECTION RALEIGH, NC 27606



**Vanceboro**

**Cove City**

**Brice's Creek Road**

**New Bern**

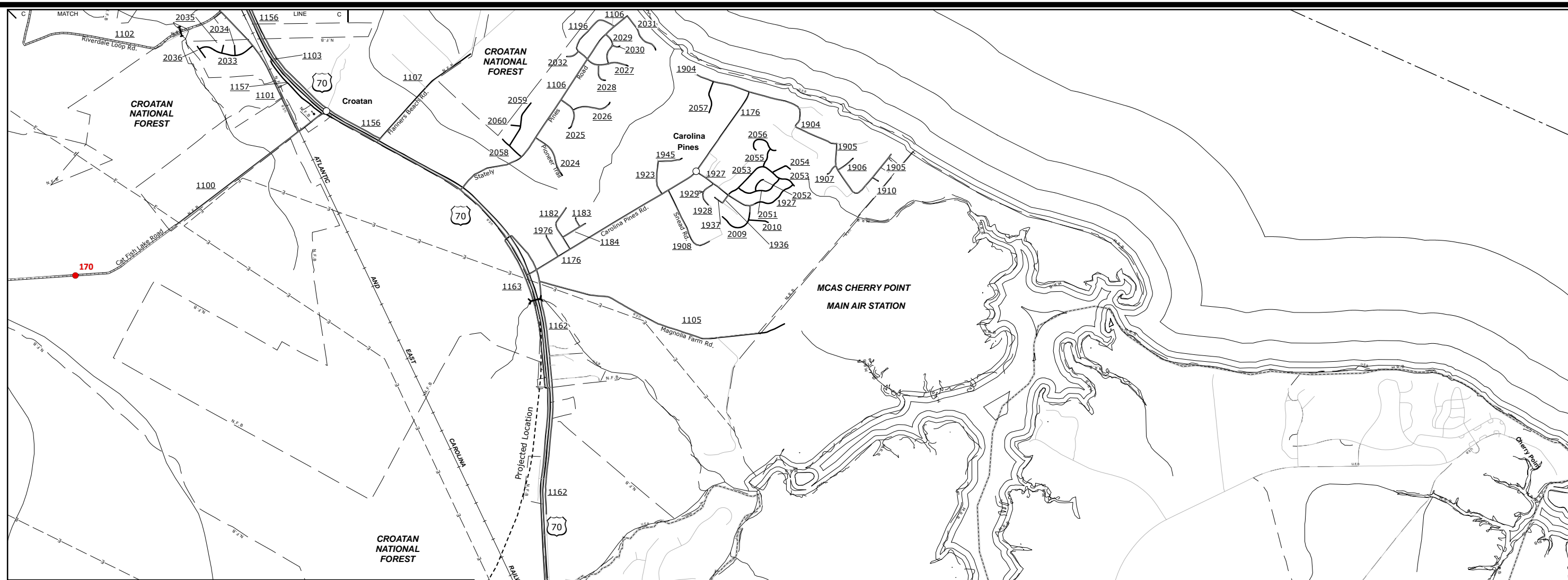
**2016 AADT**  
ANNUAL AVERAGE DAILY TRAFFIC  
GENERATED BY THE  
**TRAFFIC SURVEY GROUP**  
TRANSPORTATION PLANNING BRANCH  
ENLARGED MUNICIPAL AND SUBURBAN AREAS  
**CRAVEN COUNTY**  
NORTH CAROLINA

PREPARED BY THE  
NORTH CAROLINA DEPARTMENT OF TRANSPORTATION  
MANAGEMENT SYSTEMS AND ASSESSMENTS UNIT - MAPPING SECTION  
IN COOPERATION WITH THE  
U.S. DEPARTMENT OF TRANSPORTATION  
FEDERAL HIGHWAY ADMINISTRATION

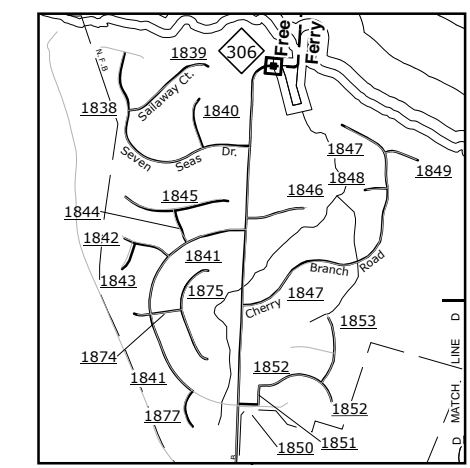
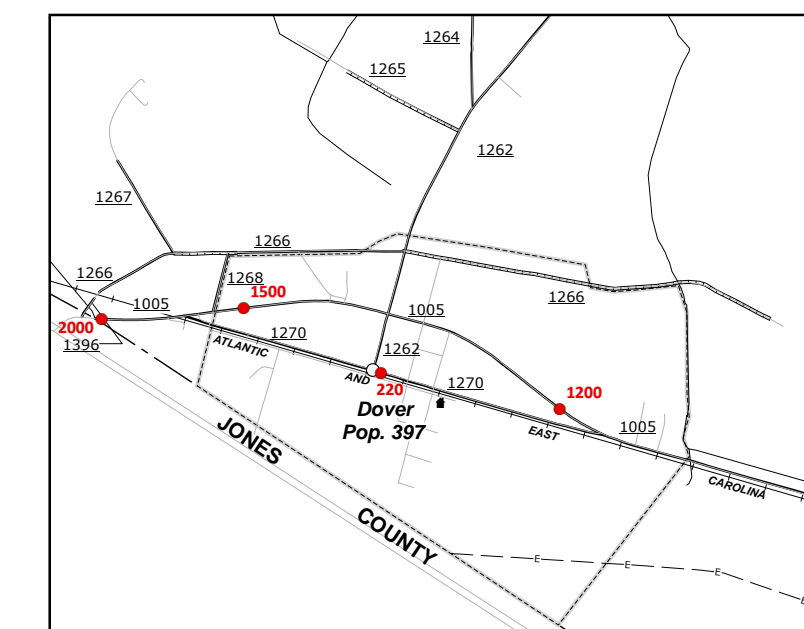
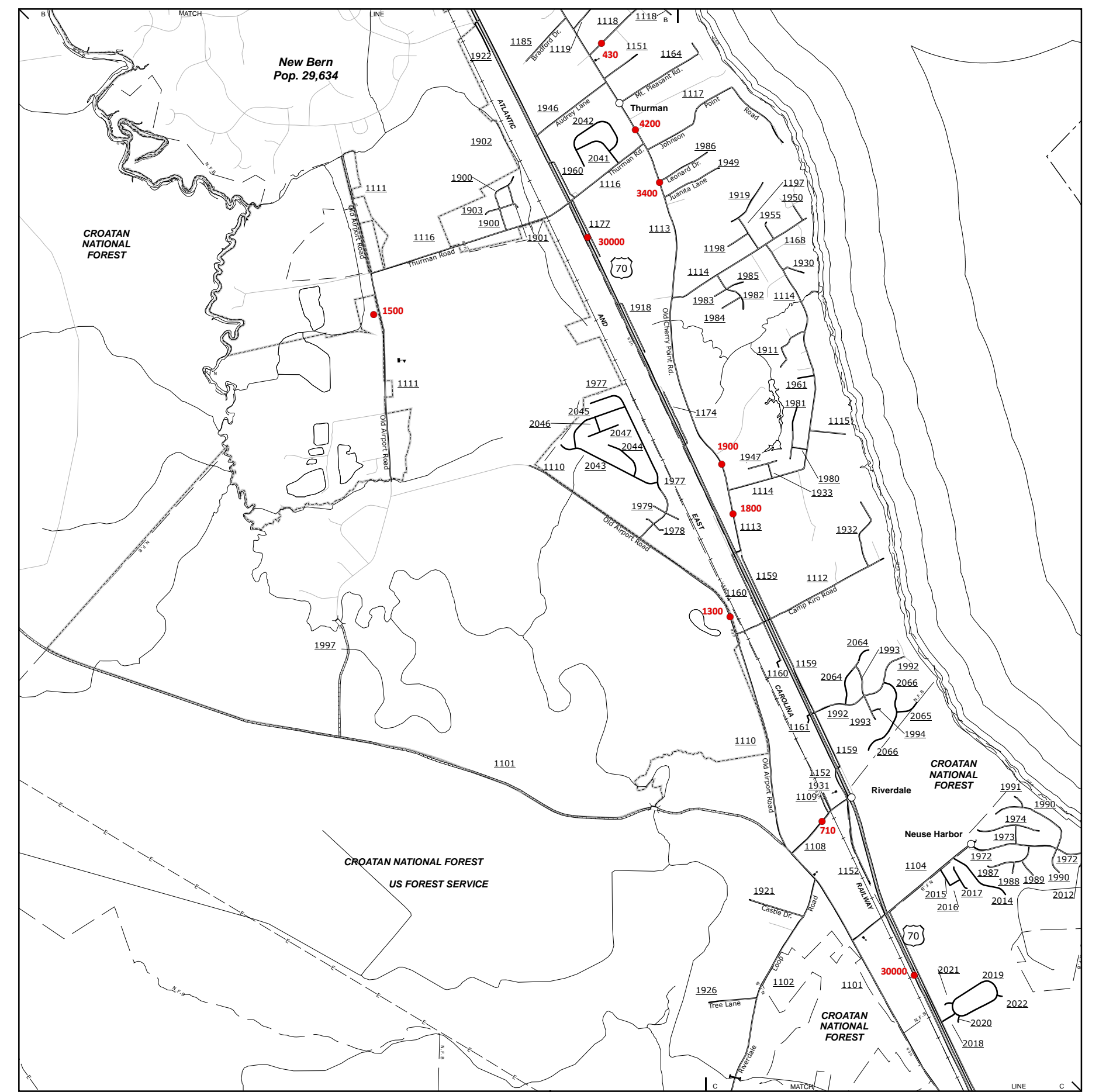
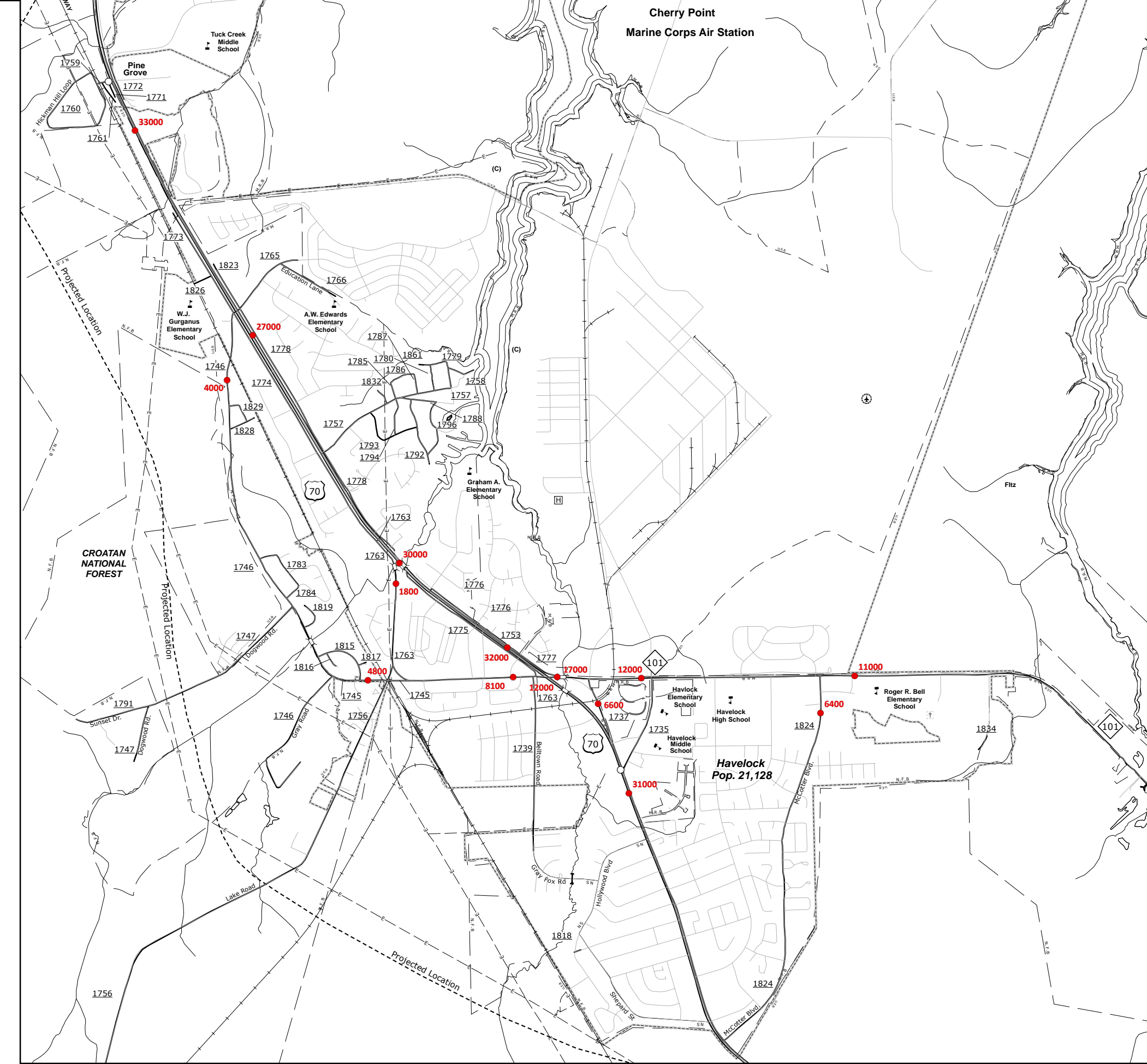
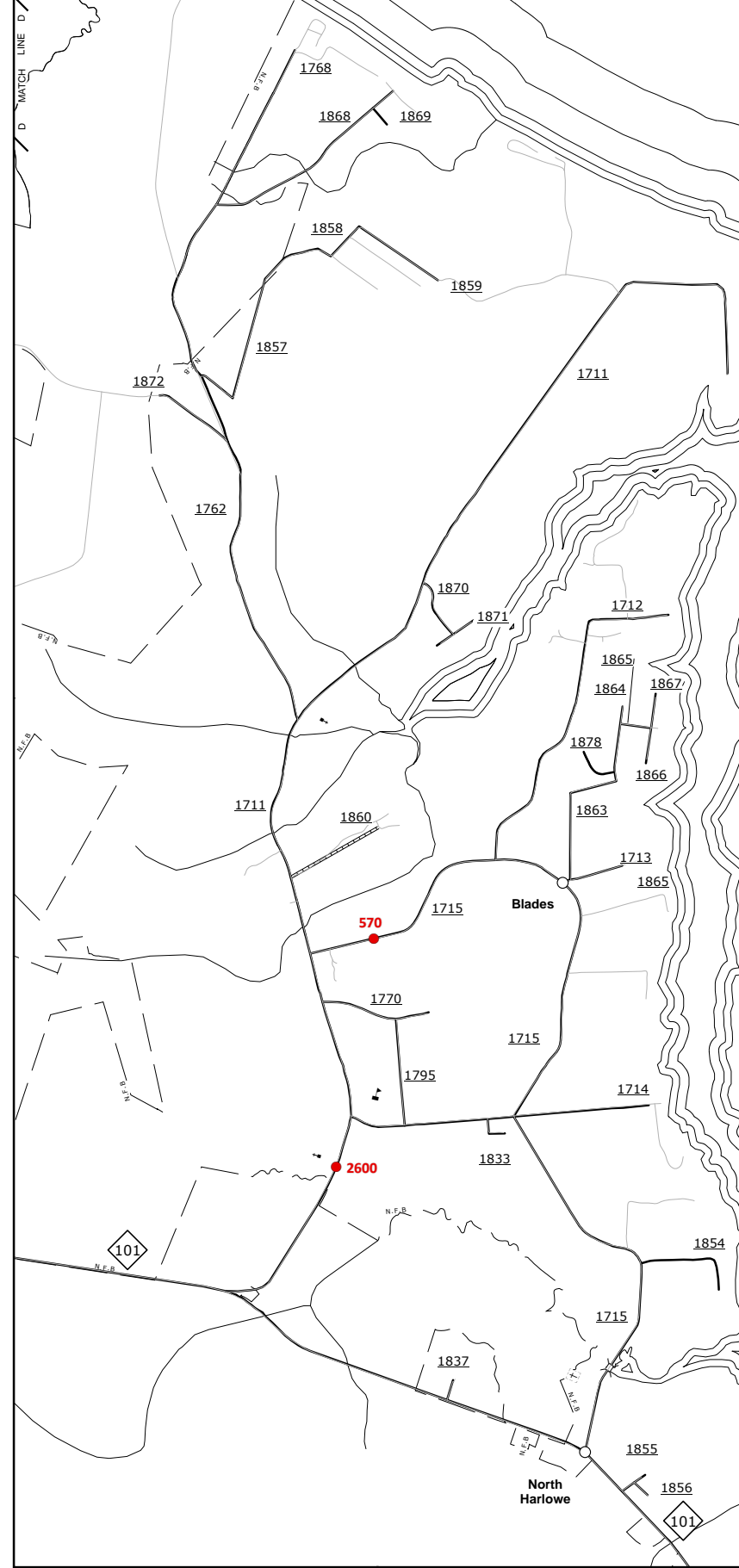
SCALE  
1 0 1  
MILES

10,000 FOOT GRID BASED ON NORTH CAROLINA PLANE COORDINATE SYSTEM  
LAMBERT CONFORMAL CONIC PROJECTION





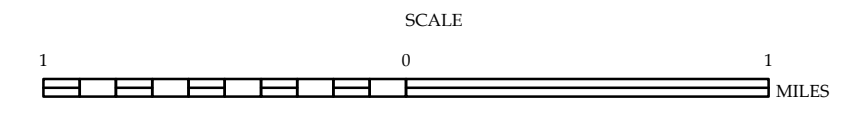
**Blades and North Harlowe**



**Thurman, James City**

**2016 AADT**  
 ANNUAL AVERAGE DAILY TRAFFIC  
 GENERATED BY THE  
**TRAFFIC SURVEY GROUP**  
 TRANSPORTATION PLANNING BRANCH  
 ENLARGED MUNICIPAL AND SUBURBAN AREAS  
**CRAVEN COUNTY**  
 NORTH CAROLINA

PREPARED BY THE  
 NORTH CAROLINA DEPARTMENT OF TRANSPORTATION  
 MANAGEMENT SYSTEMS AND ASSESSMENTS UNIT - MAPPING SECTION  
 IN COOPERATION WITH THE  
 U.S. DEPARTMENT OF TRANSPORTATION  
 FEDERAL HIGHWAY ADMINISTRATION

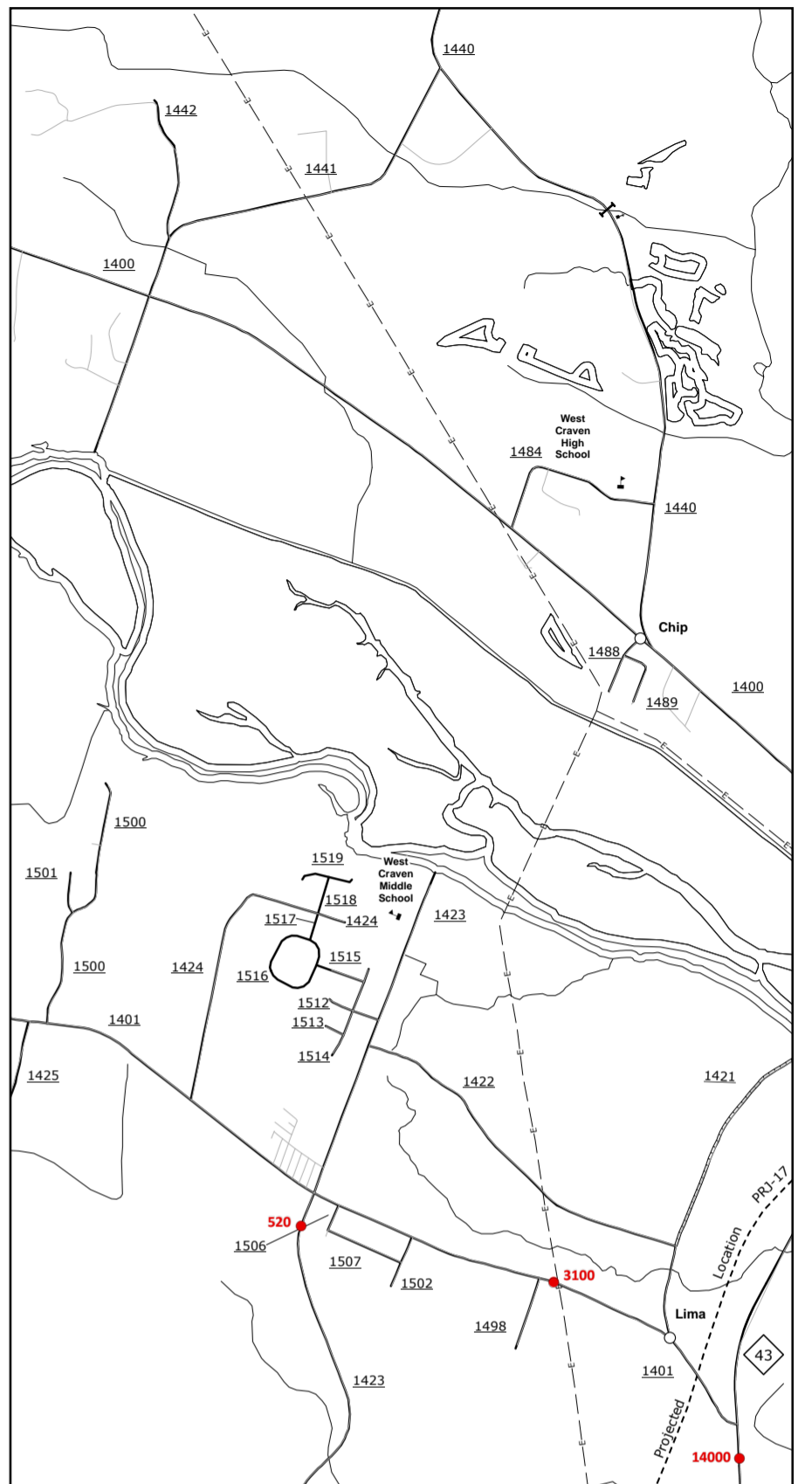
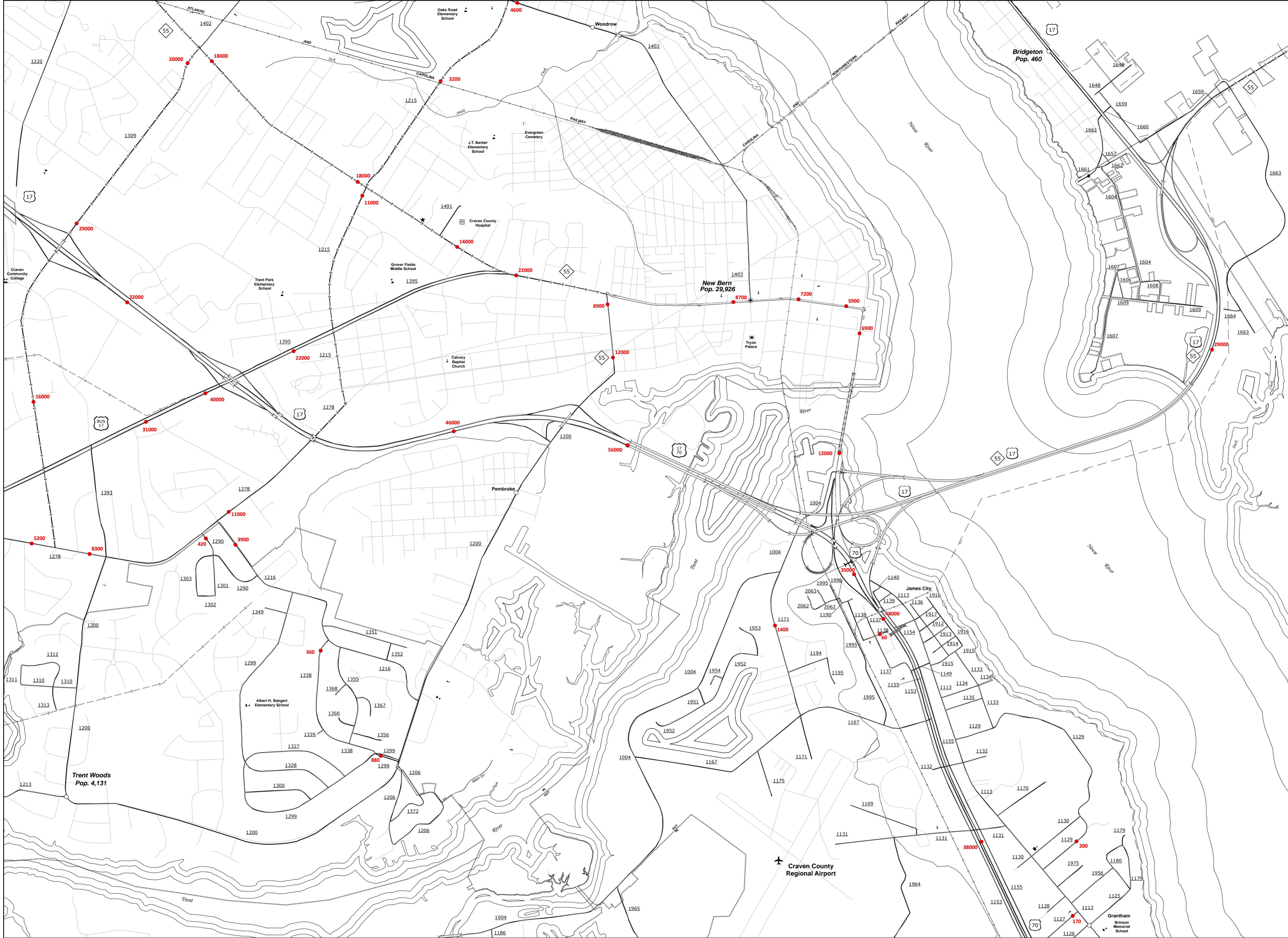


10,000 FOOT GRID BASED ON NORTH CAROLINA PLANE COORDINATE SYSTEM  
 LAMBERT CONFORMAL CONIC PROJECTION

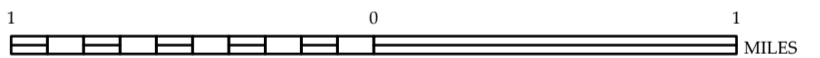
The MSAL file is to provide the most accurate and current information possible. Map data is compiled from numerous sources with varying dates of publication and map accuracy standards. As a result, the accuracy, currency and completeness of the data provided will vary. Map includes state-maintained roads. The information shown on the map was last updated on August, 2017. For additional information, visit [http://www.ncdot.gov/transportation/transportation\\_data\\_services/and\\_click\\_on\\_Data\\_Providers\\_or\\_contact\\_us\\_at\\_\(919\)856-5480](http://www.ncdot.gov/transportation/transportation_data_services/and_click_on_Data_Providers_or_contact_us_at_(919)856-5480).

COPIES OF THIS MAP ARE AVAILABLE TO THE PUBLIC AT NOMINAL COST. ADDRESS: N.C. DEPARTMENT OF TRANSPORTATION, MANAGEMENT SYSTEMS SECTION, 4809 BERRY RD, RALEIGH, NC 27606





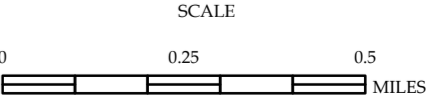
Chip and Lima



New Bern 8x Inset



**2016 AADT**  
 ANNUAL AVERAGE DAILY TRAFFIC  
 GENERATED BY THE  
**TRAFFIC SURVEY GROUP**  
 TRANSPORTATION PLANNING BRANCH  
 ENLARGED MUNICIPAL AND SUBURBAN AREAS  
**CRAVEN COUNTY**  
 NORTH CAROLINA  
 PREPARED BY THE  
 NORTH CAROLINA DEPARTMENT OF TRANSPORTATION  
 MANAGEMENT SYSTEMS AND ASSESSMENTS UNIT - MAPPING SECTION  
 IN COOPERATION WITH THE  
 U.S. DEPARTMENT OF TRANSPORTATION  
 FEDERAL HIGHWAY ADMINISTRATION



10,000 FOOT GRID BASED ON NORTH CAROLINA PLANE COORDINATE SYSTEM  
LAMBERT CONFORMAL CONIC PROJECTION

COPIES OF THIS MAP ARE AVAILABLE TO THE PUBLIC AT NOMINAL COST. ADDRESS: N.C. DEPARTMENT OF TRANSPORTATION MS&U - MAPPING SECTION RALEIGH, NC 27608  
 The MS&U staff is his people for most accurate and current information possible. Map data is compiled from numerous sources with varying dates of publication and map accuracy standards. As a result, the accuracy, currency and completeness of the data provided will vary. Maps include state-maintained roads. The information shown on this map was last updated on August, 2017. For additional information, visit <http://www.ncdot.gov/transportation/mapping>, and click on Data. Provide or contact us at (919) 855-8480.