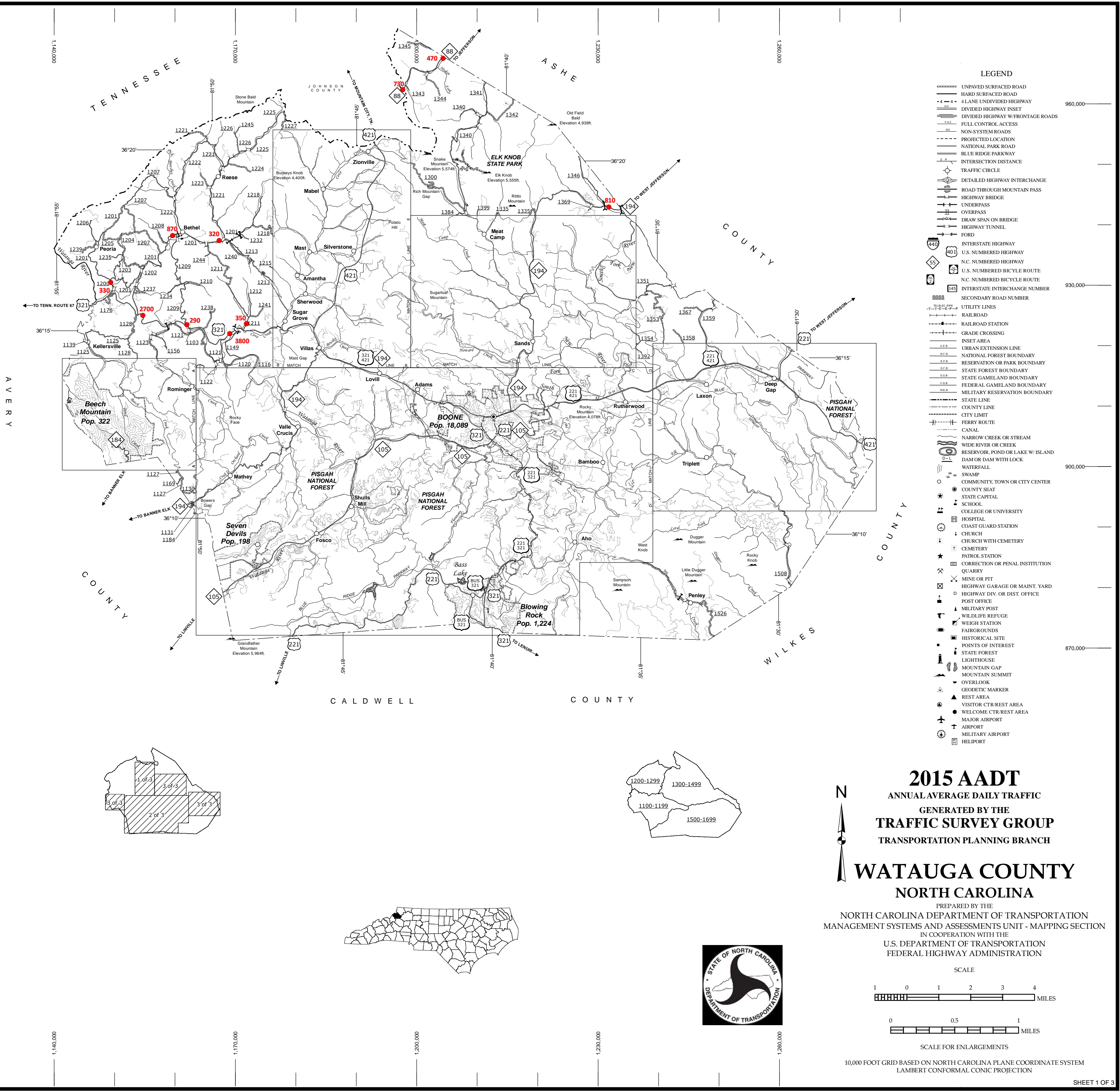


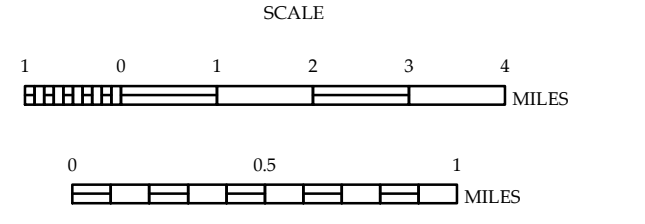
Sugar Grove to Zionville and Vicinity



2015 AADT
ANNUAL AVERAGE DAILY TRAFFIC
GENERATED BY THE
TRAFFIC SURVEY GROUP
TRANSPORTATION PLANNING BRANCH

WATAUGA COUNTY
NORTH CAROLINA

PREPARED BY THE
NORTH CAROLINA DEPARTMENT OF TRANSPORTATION
MANAGEMENT SYSTEMS AND ASSESSMENTS UNIT - MAPPING SECTION
IN COOPERATION WITH THE
U.S. DEPARTMENT OF TRANSPORTATION
FEDERAL HIGHWAY ADMINISTRATION

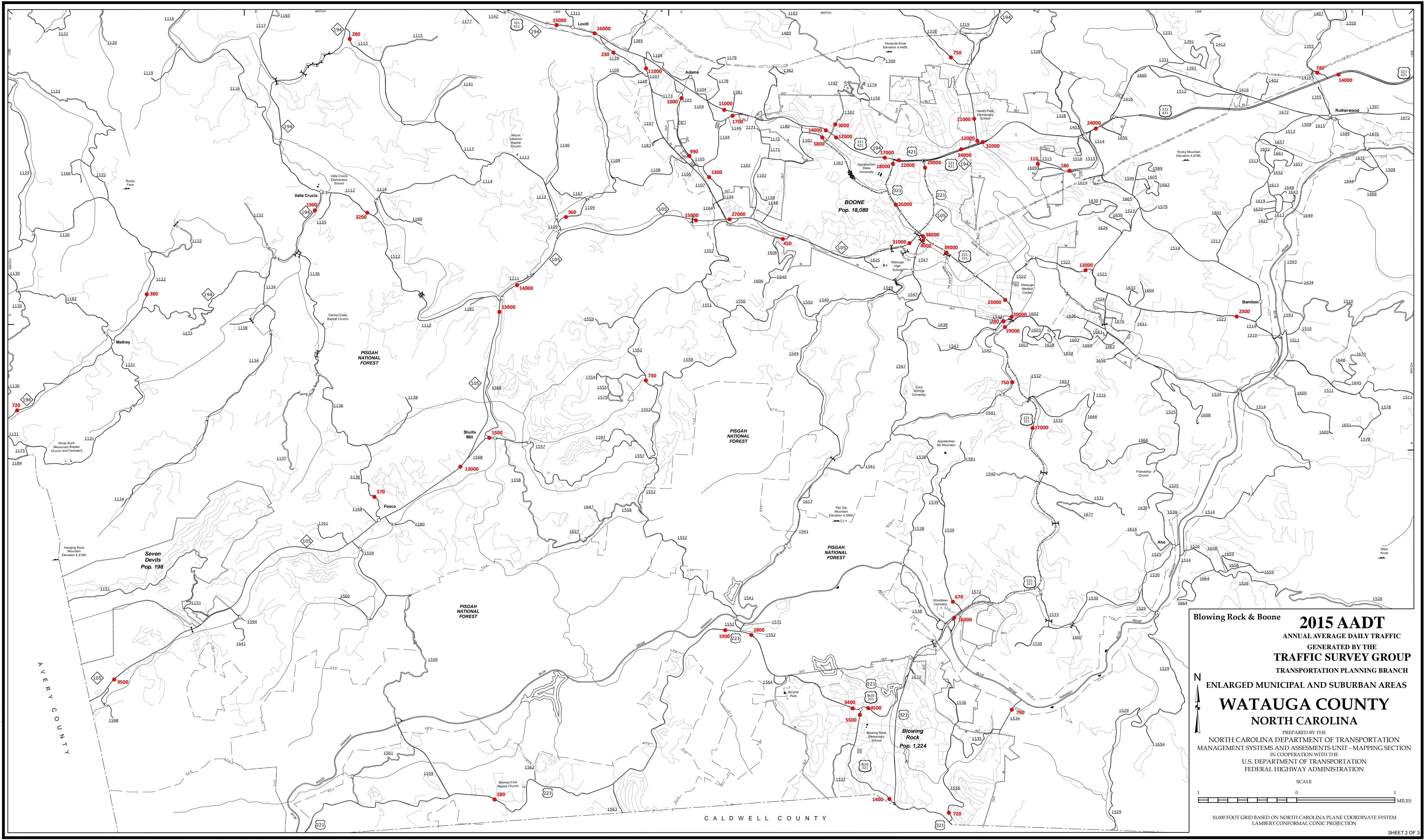


SCALE FOR ENLARGEMENTS
10,000 FOOT GRID BASED ON NORTH CAROLINA PLANE COORDINATE SYSTEM
LAMBERT CONFORMAL CONIC PROJECTION

COPIES OF THIS MAP ARE AVAILABLE AT NO CHARGE TO THE PUBLIC AT NO CHARGE.
 ADDRESS: N.C. DEPARTMENT OF TRANSPORTATION
 MSAU - MAPPING SECTION
 400 WEST GATEWAY BLVD.
 RALEIGH, NC 27606
 TEL: (919) 833-8400
 FAX: (919) 833-8400
 WWW.NCDOT.GOV

The MS&J's goal is to provide the most accurate and current information possible. Map data is compiled from a variety of sources and is subject to change without notice. Accuracy, currency and completeness of the data provided will vary. Map includes state maintained roads and important non-system roads. MS&J's mapping section was last updated on September, 2016. For additional information, visit [http://www.ncdot.gov/transportation/and/or Data Providers or contact us at \(818\) 835-8440](http://www.ncdot.gov/transportation/and/or Data Providers or contact us at (818) 835-8440).

COPIES OF THIS MAP ARE AVAILABLE FOR PURCHASE AT NOMINAL COST. ADDRESS: N.C. DEPARTMENT OF TRANSPORTATION MS&J - MAPPING SECTION ROUTE 124, BOX 2906

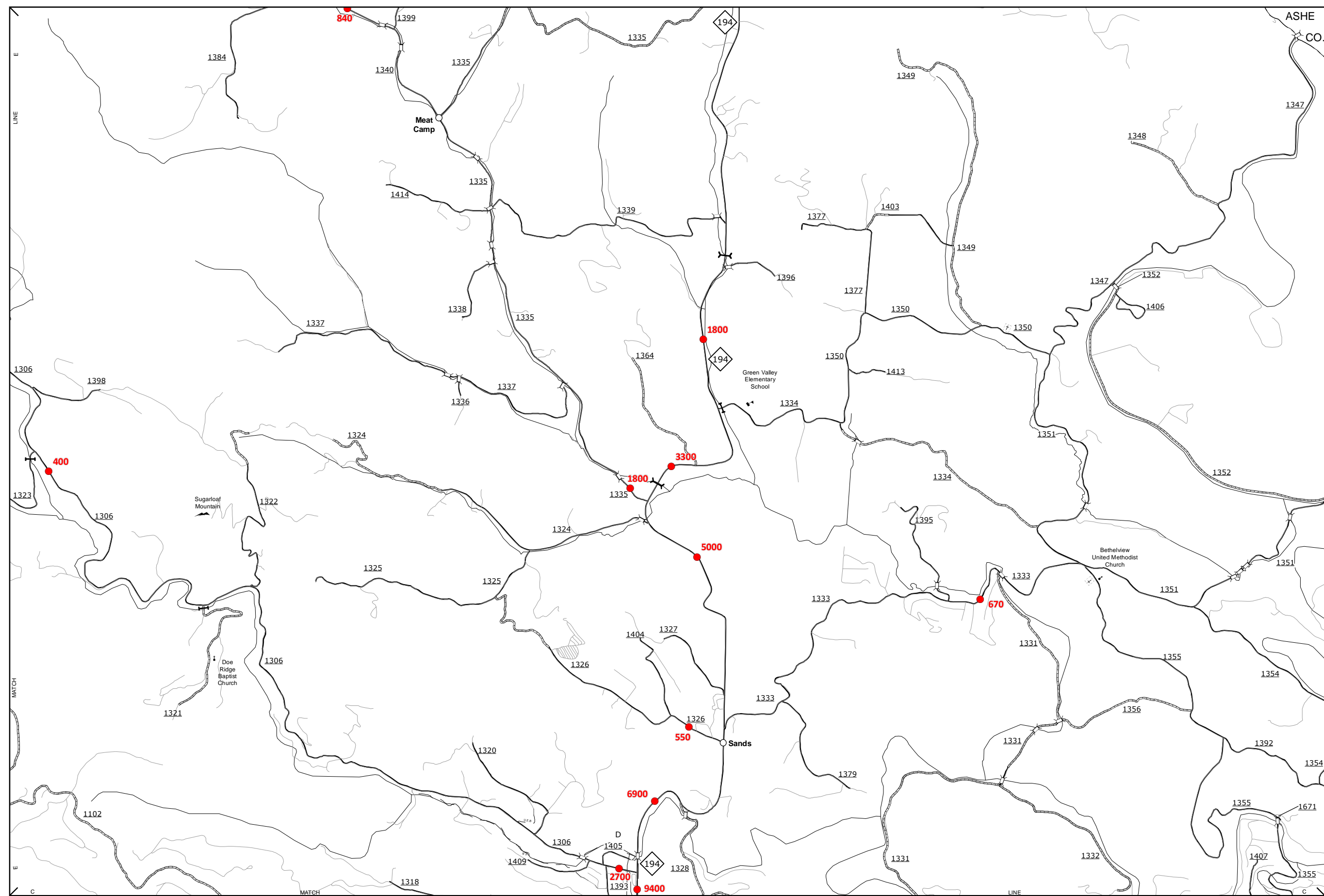


Blowing Rock & Boone 2015 AADT
ANNUAL AVERAGE DAILY TRAFFIC
GENERATED BY THE
TRAFFIC SURVEY GROUP
TRANSPORTATION PLANNING BRANCH
ENLARGED MUNICIPAL AND SUBURBAN AREAS
WATAUGA COUNTY
NORTH CAROLINA
PREPARED BY THE
NORTH CAROLINA DEPARTMENT OF TRANSPORTATION
MANAGEMENT SYSTEMS AND ASSESSMENTS UNIT - MAPPING SECTION
IN COOPERATION WITH THE
U.S. DEPARTMENT OF TRANSPORTATION
FEDERAL HIGHWAY ADMINISTRATION

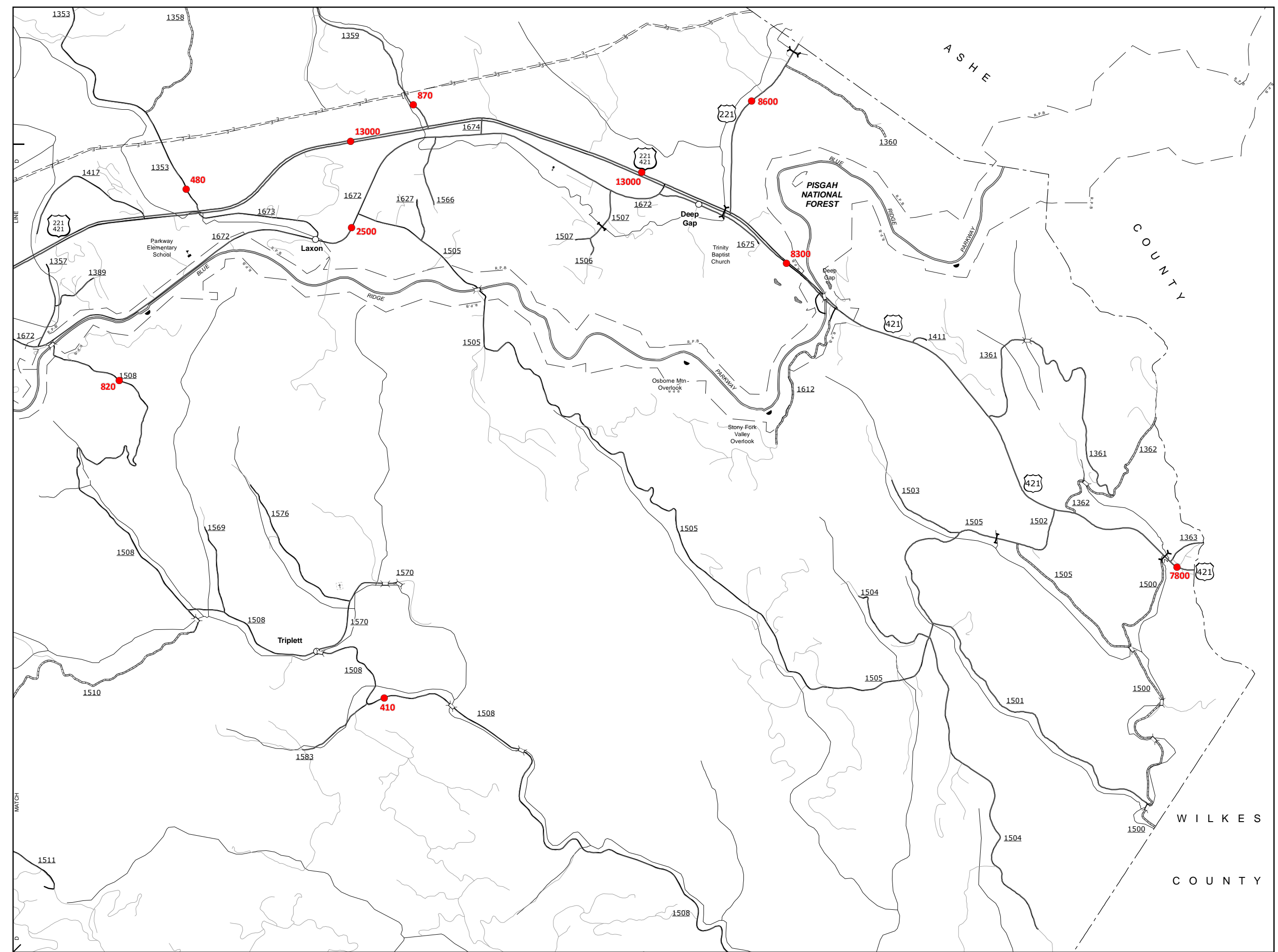
SCALE
1 0 1
MILES

10,000 FOOT GRID BASED ON NORTH CAROLINA PLANE COORDINATE SYSTEM
LAMBERT CONFORMAL CONIC PROJECTION

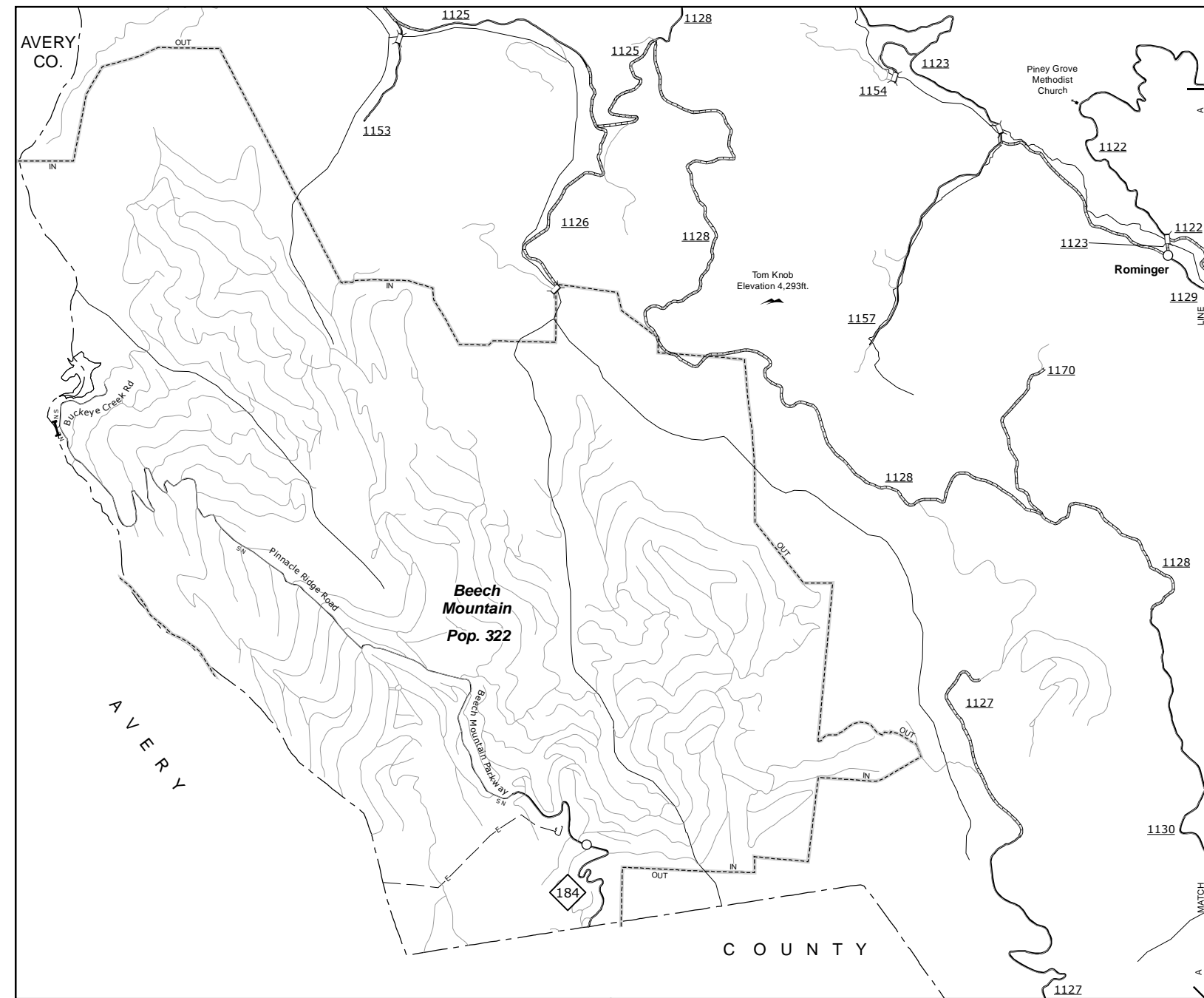
SHEET 2 OF 3



Sands and Vicinity



Deep Gap

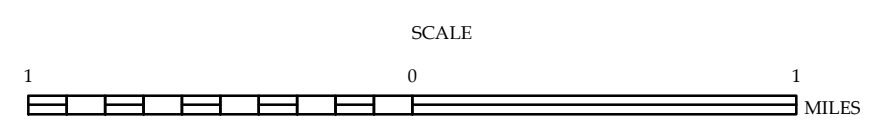


Beech Mountain and Vicinity

2015 AADT
ANNUAL AVERAGE DAILY TRAFFIC
GENERATED BY THE
TRAFFIC SURVEY GROUP
TRANSPORTATION PLANNING BRANCH

ENLARGED MUNICIPAL AND SUBURBAN AREAS
WATAUGA COUNTY
NORTH CAROLINA

PREPARED BY THE
NORTH CAROLINA DEPARTMENT OF TRANSPORTATION
MANAGEMENT SYSTEMS AND ASSESSMENTS UNIT - MAPPING SECTION
IN COOPERATION WITH THE
U.S. DEPARTMENT OF TRANSPORTATION
FEDERAL HIGHWAY ADMINISTRATION



10,000 FOOT GRID BASED ON NORTH CAROLINA PLANE COORDINATE SYSTEM
LAMBERT CONFORMAL CONIC PROJECTION

The MS&U's goal is to provide the most accurate and current information possible. Map data is compiled from a variety of sources and is not guaranteed to be 100% accurate. Accuracy, currency and completeness of the data provided will vary. Map includes state maintained roads and important non-system roads. MS&U's mapping section was last updated on September, 2016. For additional information, visit http://www.ncdot.gov/transportation/transportation_data_providers and click on Data Providers or contact us at (813) 835-8440.

COPIES OF THIS MAP ARE AVAILABLE AT NO CHARGE TO THE PUBLIC AT NO CHARGE. ADDRESS: N.C. DEPARTMENT OF TRANSPORTATION MS&U - MAPPING SECTION 800 W. HICKORY STREET, SUITE 2000 RALEIGH, NC 27606