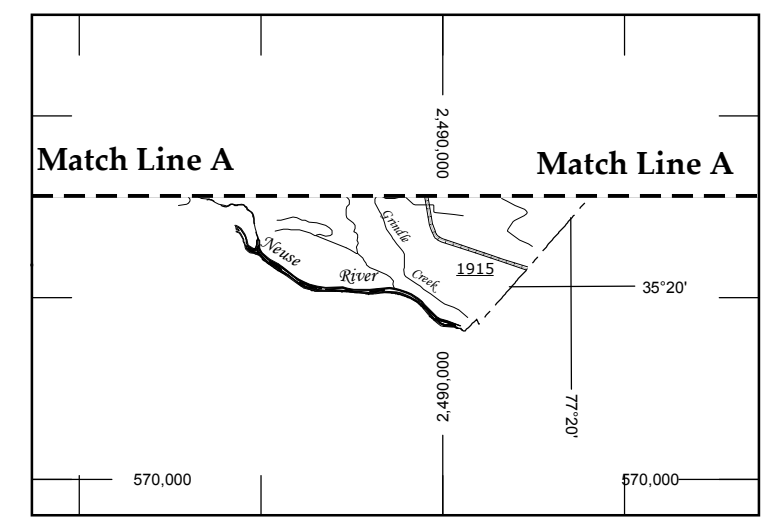


SEE 2014  
GREENVILLE URBAN  
MAP

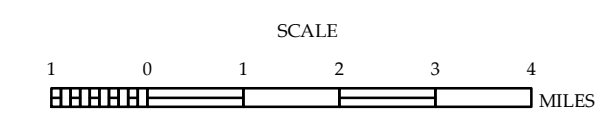


- LEGEND**
- UNPAVED SURFACED ROAD
  - HARD SURFACED ROAD
  - 4 LANE UNDIVIDED HIGHWAY
  - DIVIDED HIGHWAY INSET
  - DIVIDED HIGHWAY W/FRONTAGE ROADS
  - FULL CONTROL ACCESS
  - NON-SYSTEM ROADS
  - PROJECTED LOCATION
  - NATIONAL PARK ROAD
  - BLUE RIDGE PARKWAY
  - INTERSECTION DISTANCE
  - TRAFFIC CIRCLE
  - DETAILED HIGHWAY INTERCHANGE
  - ROAD THROUGH MOUNTAIN PASS
  - HIGHWAY BRIDGE
  - UNDERPASS
  - OVERPASS
  - DRAW SPAN ON BRIDGE
  - HIGHWAY TUNNEL
  - FORD
  - INTERSTATE HIGHWAY
  - U.S. NUMBERED HIGHWAY
  - N.C. NUMBERED HIGHWAY
  - U.S. NUMBERED BICYCLE ROUTE
  - N.C. NUMBERED BICYCLE ROUTE
  - INTERSTATE INTERCHANGE NUMBER
  - SECONDARY ROAD NUMBER
  - UTILITY LINES
  - RAILROAD
  - RAILROAD STATION
  - GRADE CROSSING
  - INSET AREA
  - URBAN EXTENSION LINE
  - NATIONAL FOREST BOUNDARY
  - RESERVATION OR PARK BOUNDARY
  - STATE FOREST BOUNDARY
  - STATE GAMELAND BOUNDARY
  - FEDERAL GAMELAND BOUNDARY
  - MILITARY RESERVATION BOUNDARY
  - STATE LINE
  - COUNTY LINE
  - CITY LIMIT
  - FERRY ROUTE
  - CANAL
  - NARROW CREEK OR STREAM
  - WIDE RIVER OR CREEK
  - RESERVOIR, POND OR LAKE W/ ISLAND
  - DAM OR DAM WITH LOCK
  - WATERFALL
  - SWAMP
  - COMMUNITY TOWN OR CITY CENTER
  - COUNTY SEAT
  - STATE CAPITAL
  - SCHOOL
  - COLLEGE OR UNIVERSITY
  - HOSPITAL
  - COAST GUARD STATION
  - CHURCH
  - CHURCH WITH CEMETERY
  - CEMETERY
  - PATROL STATION
  - CORRECTION OR PENAL INSTITUTION
  - QUARRY
  - MINE OR PIT
  - HIGHWAY GARAGE OR MAINT. YARD
  - HIGHWAY DIV. OR DIST. OFFICE
  - POST OFFICE
  - MILITARY POST
  - WILDLIFE REFUGE
  - WEIGH STATION
  - FAIRGROUNDS
  - HISTORICAL SITE
  - POINTS OF INTEREST
  - STATE FOREST
  - LIGHTHOUSE
  - MOUNTAIN GAP
  - MOUNTAIN SUMMIT
  - OVERLOOK
  - GEODETIC MARKER
  - REST AREA
  - VISITOR CENTER REST AREA
  - WELCOME CENTER REST AREA
  - MAJOR AIRPORT
  - AIRPORT
  - MILITARY AIRPORT
  - HELIPORT

**2015 AADT**  
ANNUAL AVERAGE DAILY TRAFFIC  
GENERATED BY THE  
TRAFFIC SURVEY GROUP  
TRANSPORTATION PLANNING BRANCH

**PITT COUNTY**  
NORTH CAROLINA

PREPARED BY THE  
NORTH CAROLINA DEPARTMENT OF TRANSPORTATION  
MANAGEMENT SYSTEMS AND ASSESSMENTS UNIT - MAPPING SECTION  
IN COOPERATION WITH THE  
U.S. DEPARTMENT OF TRANSPORTATION  
FEDERAL HIGHWAY ADMINISTRATION



10,000 FOOT GRID BASED ON NORTH CAROLINA PLANE COORDINATE SYSTEM  
LAMBERT CONFORMAL CONIC PROJECTION

COPIES OF THIS MAP ARE AVAILABLE TO THE PUBLIC AT A NOMINAL COST. ADDRESS: N.C. DEPARTMENT OF TRANSPORTATION, TRANSPORTATION SECTION, 4809 BERRY RD, RALEIGH, NC 27608

The NACT's goal is to provide the most accurate and current information possible. Map data is compiled from numerous sources with varying scales of publication and map accuracy standards. As a result, the information shown on this map was last updated on September, 2016. For additional information, visit <http://www.ncdot.gov>



**Grifton**

**2015 AADT**  
ANNUAL AVERAGE DAILY TRAFFIC  
GENERATED BY THE  
**TRAFFIC SURVEY GROUP**  
TRANSPORTATION PLANNING BRANCH

ENLARGED MUNICIPAL AND SUBURBAN AREAS  
**PITT COUNTY**  
NORTH CAROLINA

PREPARED BY THE  
NORTH CAROLINA DEPARTMENT OF TRANSPORTATION  
MANAGEMENT SYSTEMS AND ASSESSMENTS UNIT - MAPPING SECTION  
IN COOPERATION WITH THE  
U.S. DEPARTMENT OF TRANSPORTATION  
FEDERAL HIGHWAY ADMINISTRATION

SCALE  
1 0 1  
MILES

10,000 FOOT GRID BASED ON NORTH CAROLINA PLANE COORDINATE SYSTEM  
LAMBERT CONFORMAL CONIC PROJECTION

SHEET 2 OF 5

The MSAG's goal is to provide the most accurate and current information possible. Map data is compiled from various sources and is not guaranteed to be 100% accurate. Accuracy, currency and completeness of the data provided will vary. Map includes state-maintained roads and important non-system roads. MSAG - MAPPING SECTION  
WWW.MSAG.ORG  
800.528.2906

COPIES OF THIS MAP ARE AVAILABLE AT A FEE. CONTACT THE N.C. DEPARTMENT OF TRANSPORTATION AT THE FOLLOWING ADDRESS:  
N.C. DEPARTMENT OF TRANSPORTATION  
MSAG - MAPPING SECTION  
100 SOUTH TRYON STREET  
RALEIGH, NC 27603



**SEE 2014  
GREENVILLE URBAN  
MAP**

Winterville



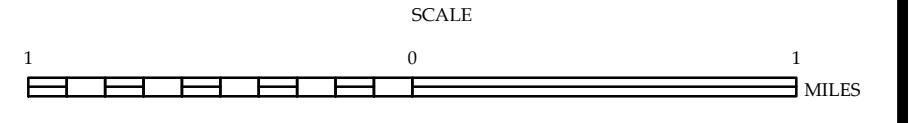
**2015 AADT**  
ANNUAL AVERAGE DAILY TRAFFIC

GENERATED BY THE  
**TRAFFIC SURVEY GROUP**

TRANSPORTATION PLANNING BRANCH  
ENLARGED MUNICIPAL AND SUBURBAN AREAS

**PITT COUNTY  
NORTH CAROLINA**

PREPARED BY THE  
NORTH CAROLINA DEPARTMENT OF TRANSPORTATION  
MANAGEMENT SYSTEMS AND ASSESSMENTS UNIT - MAPPING SECTION  
IN COOPERATION WITH THE  
U.S. DEPARTMENT OF TRANSPORTATION  
FEDERAL HIGHWAY ADMINISTRATION



10,000 FOOT GRID BASED ON NORTH CAROLINA PLANE COORDINATE SYSTEM  
LAMBERT CONFORMAL CONIC PROJECTION

The MSMA's goal is to provide the most accurate and current information possible. Map data is compiled from a variety of sources and is subject to change. Accuracy, currency and completeness of the data provided will vary. Map includes state-maintained roads and important non-system roads. MSMA - MAPPING SECTION  
WWW.NCDEPARTMENTOFTRANSPORTATION.ORG  
FOR ADDITIONAL INFORMATION, VISIT  
WWW.NCDEPARTMENTOFTRANSPORTATION.ORG  
OR CALL 1-800-368-6808

COPIES OF THIS MAP ARE AVAILABLE  
FOR PURCHASE AT A NOMINAL COST.  
ADDRESS:  
N.C. DEPARTMENT OF TRANSPORTATION  
MSMA - MAPPING SECTION  
100 SOUTH TRYON STREET  
RALEIGH, NC 27603



SEE 2014  
GREENVILLE URBAN  
MAP

**Greenville**

**2015 AADT**  
ANNUAL AVERAGE DAILY TRAFFIC  
GENERATED BY THE  
**TRAFFIC SURVEY GROUP**  
TRANSPORTATION PLANNING BRANCH

ENLARGED MUNICIPAL AND SUBURBAN AREAS

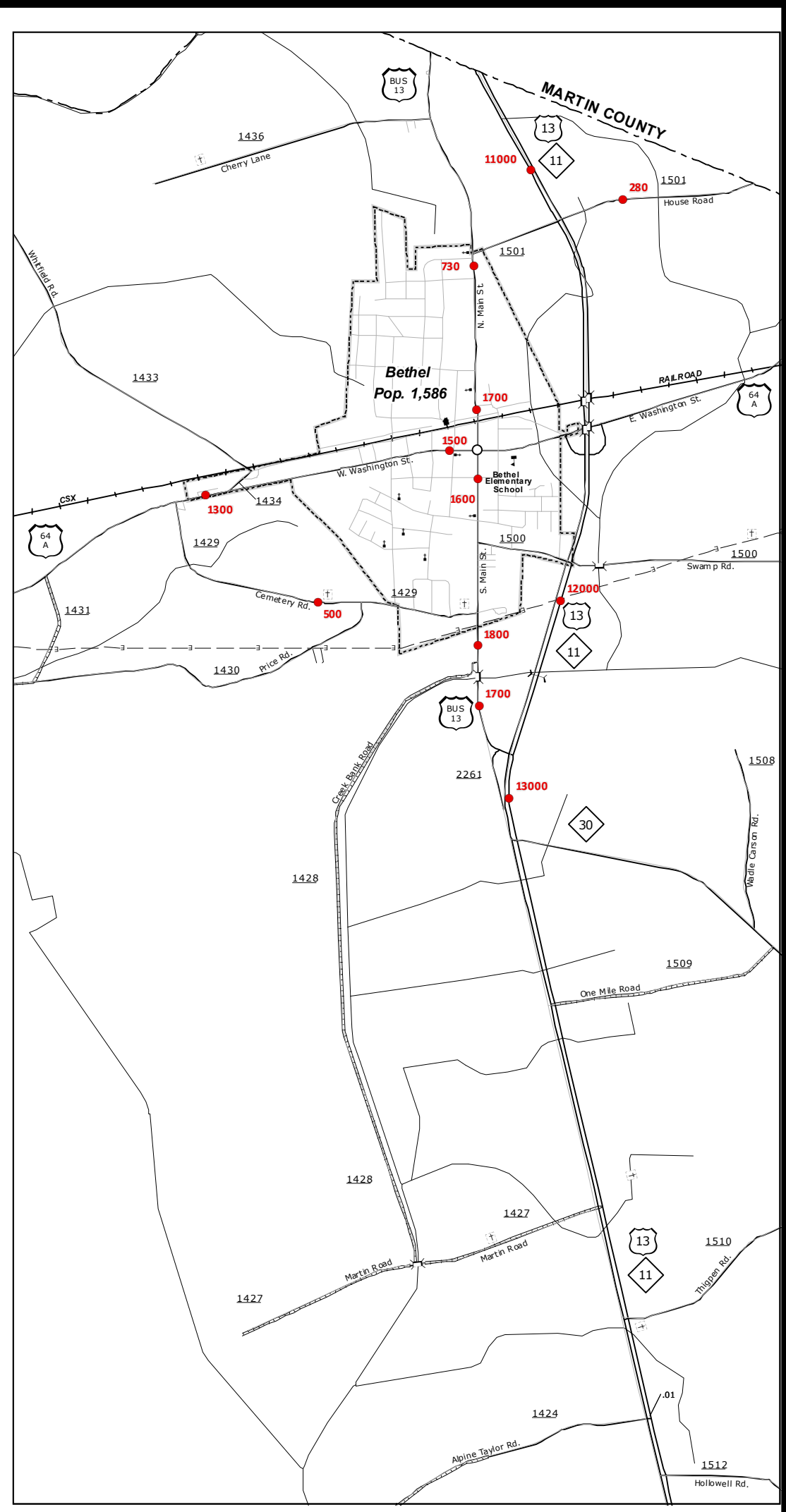
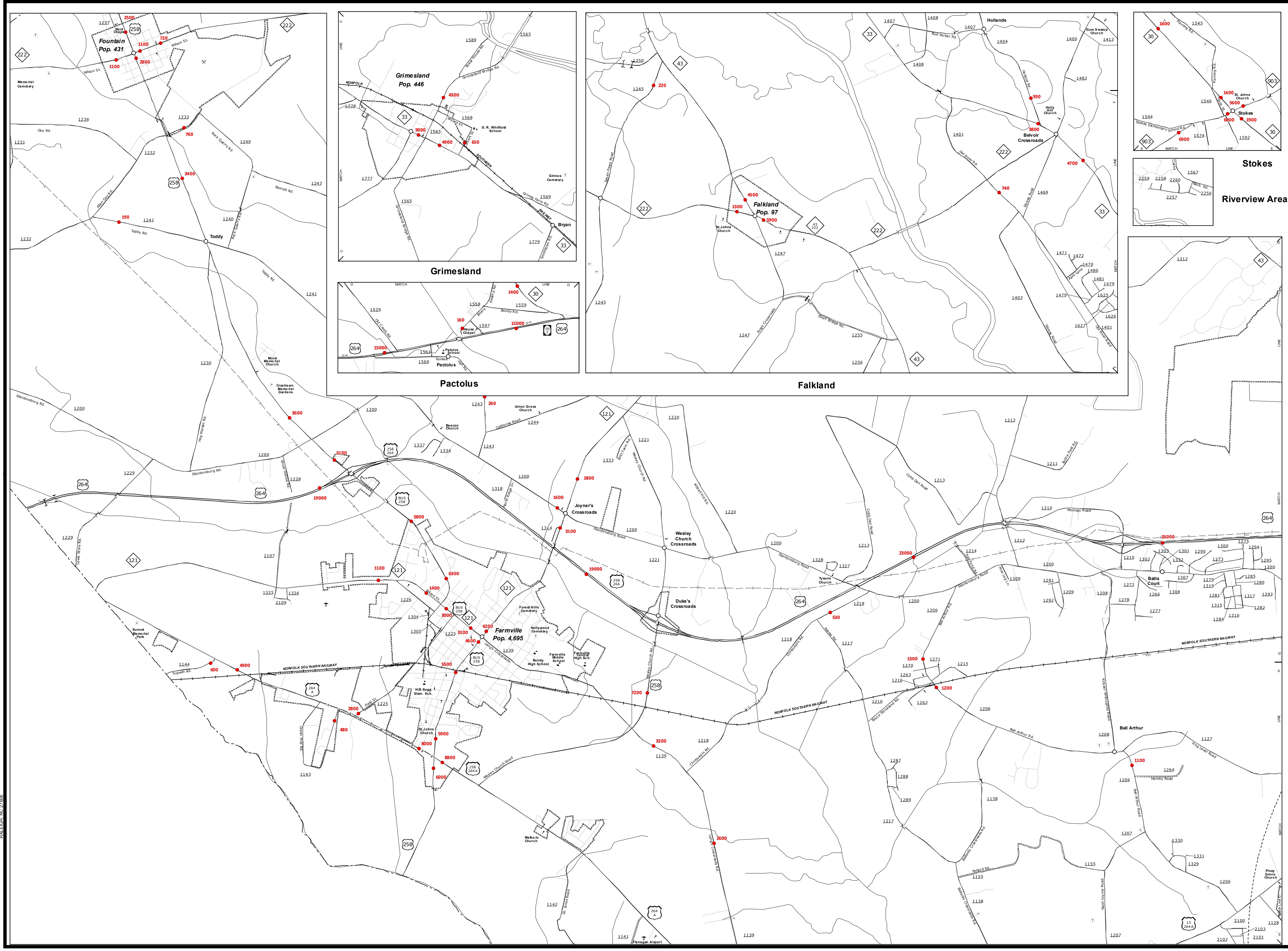
**PITT COUNTY**  
NORTH CAROLINA

PREPARED BY THE  
NORTH CAROLINA DEPARTMENT OF TRANSPORTATION  
MANAGEMENT SYSTEMS AND ASSESSMENTS UNIT - MAPPING SECTION  
IN COOPERATION WITH THE  
U.S. DEPARTMENT OF TRANSPORTATION  
FEDERAL HIGHWAY ADMINISTRATION

SCALE  
1 0 1  
MILES

10,000 FOOT GRID BASED ON NORTH CAROLINA PLANE COORDINATE SYSTEM  
LAMBERT CONFORMAL CONIC PROJECTION

COPIES OF THIS MAP ARE AVAILABLE TO THE PUBLIC AT A NOMINAL COST. ADDRESS: N.C. DEPARTMENT OF TRANSPORTATION, DIVISION 2, DISTRICT 1, SECTION 4, 4800 BERRY LANE, RALEIGH, NC 27606



**Farmville and Vicinity**

**2015 AADT**  
ANNUAL AVERAGE DAILY TRAFFIC  
GENERATED BY THE  
**TRAFFIC SURVEY GROUP**  
TRANSPORTATION PLANNING BRANCH

ENLARGED MUNICIPAL AND SUBURBAN AREAS  
**PITT COUNTY**  
NORTH CAROLINA

PREPARED BY THE  
NORTH CAROLINA DEPARTMENT OF TRANSPORTATION  
MANAGEMENT SYSTEMS AND ASSESSMENTS UNIT - MAPPING SECTION  
IN COOPERATION WITH THE  
U.S. DEPARTMENT OF TRANSPORTATION  
FEDERAL HIGHWAY ADMINISTRATION

SCALE  
1 0 1  
MILES

10,000 FOOT GRID BASED ON NORTH CAROLINA PLANE COORDINATE SYSTEM  
LAMBERT CONFORMAL CONIC PROJECTION

SHEET 5 OF 6