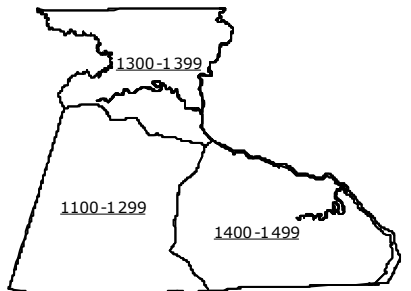
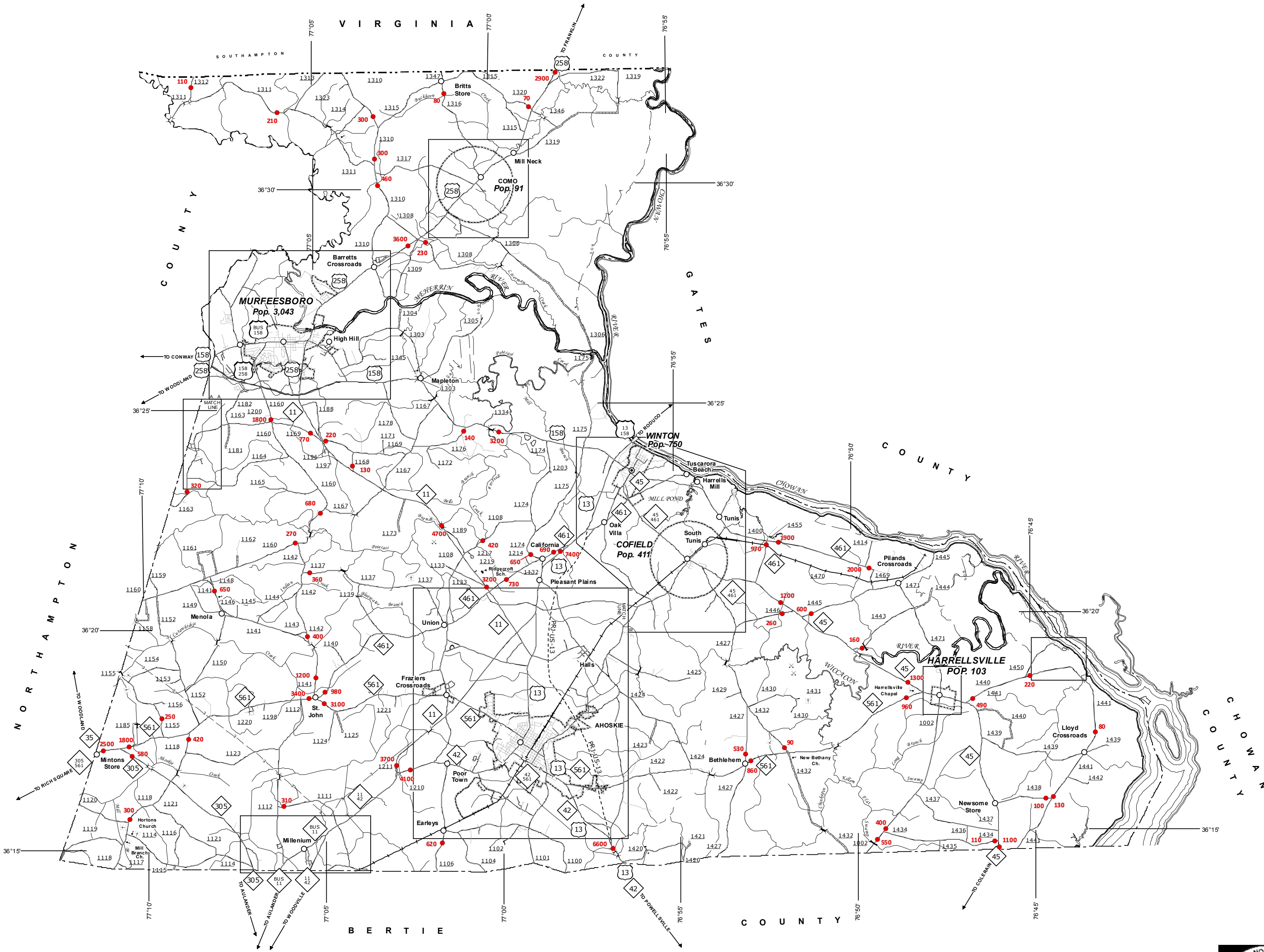
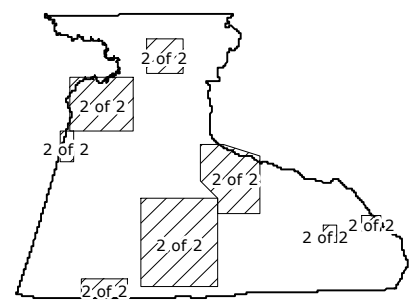


The NCA's goal is to provide the most accurate and current information possible. Map data is compiled from numerous sources with varying scales of publication and map accuracy standards. As a result, the accuracy of the information shown on this map is not guaranteed. The information shown on this map was last updated on September, 2016. For additional information, visit www.ncdot.gov. The information shown on this map is not intended to be used for legal purposes. The information shown on this map is not intended to be used for legal purposes.

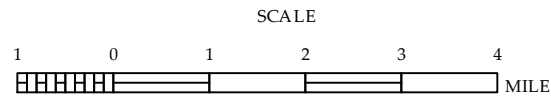
COPIES OF THIS MAP ARE AVAILABLE TO THE PUBLIC AT A NOMINAL COST. AGREES: N.C. DEPARTMENT OF TRANSPORTATION 4809 BERRY RD RALEIGH, NC 27606



2015 AADT
ANNUAL AVERAGE DAILY TRAFFIC
GENERATED BY THE
TRAFFIC SURVEY GROUP
TRANSPORTATION PLANNING BRANCH

HERTFORD COUNTY
NORTH CAROLINA

PREPARED BY THE
NORTH CAROLINA DEPARTMENT OF TRANSPORTATION
STATE ROAD MANAGEMENT UNIT - MAPPING SECTION
IN COOPERATION WITH THE
U.S. DEPARTMENT OF TRANSPORTATION
FEDERAL HIGHWAY ADMINISTRATION



10,000 FOOT GRID BASED ON NORTH CAROLINA PLANE COORDINATE SYSTEM
LAMBERT CONFORMAL CONIC PROJECTION

The NCA's goal is to provide the most accurate and current information possible. Map data is compiled from numerous sources with varying dates of publication and map accuracy standards. As a result, the information shown on the map was last updated on September 2016. For additional information, visit <http://www.ncdot.gov>.

COPIES OF THIS MAP ARE AVAILABLE TO THE PUBLIC AT NOMINAL COST. ADDRESS: N.C. DEPARTMENT OF TRANSPORTATION, 4809 BERRY LANE, RALEIGH, NC 27606

