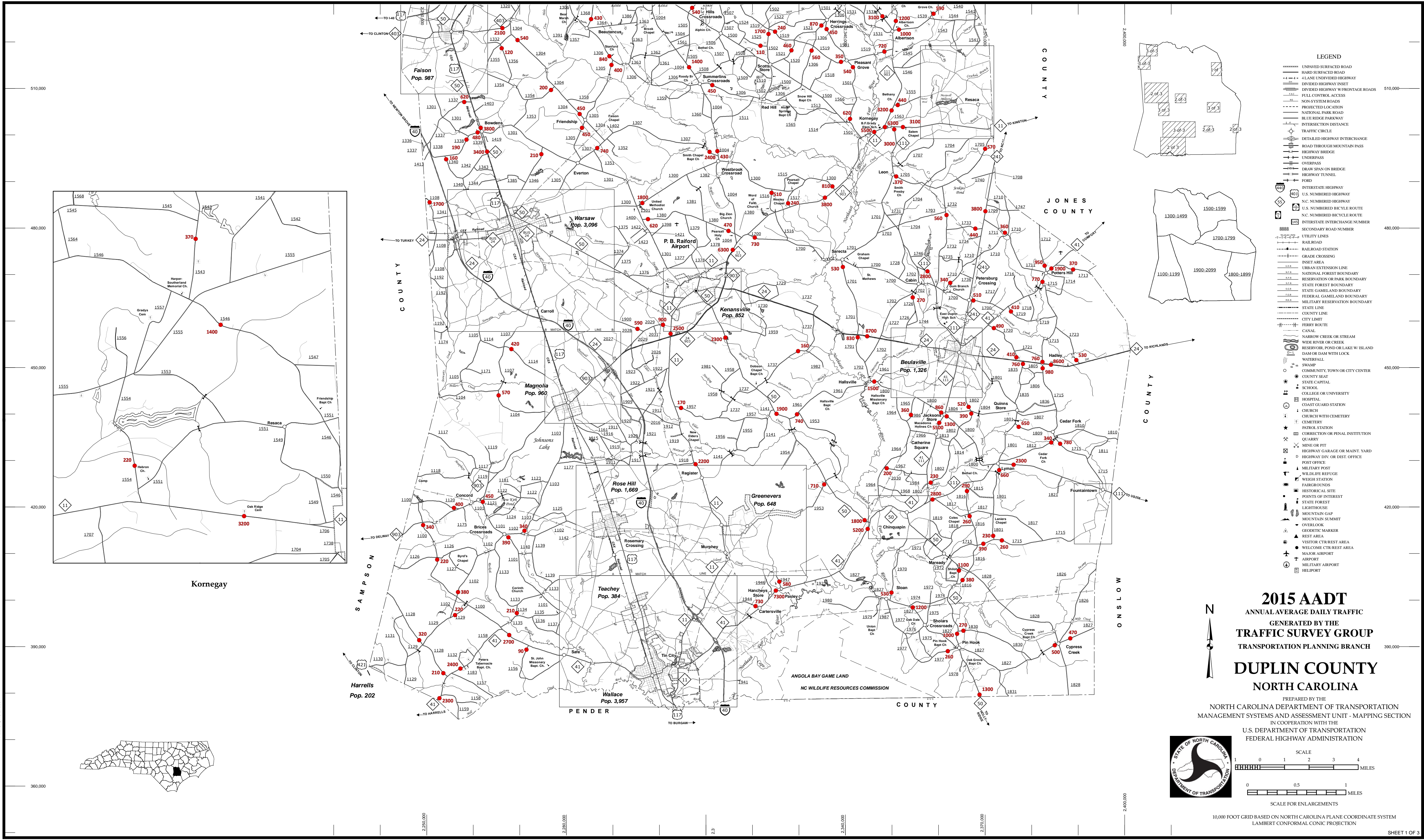


The MSAG's goal is to provide the most accurate and current information possible. Map data is compiled from a variety of sources and is subject to change. Accuracy, currency and completeness of the data provided will vary. Map includes state maintenance roads and important non-system roads. MSAG was last updated on September, 2016. For additional information, visit <http://www.ncdot.gov/transportation/mapping> and click on Data Providers or contact us at (813) 835-8430.

COPIES OF THIS MAP ARE AVAILABLE FOR PURCHASE AT NOMINAL COST. ADDRESS: N.C. DEPARTMENT OF TRANSPORTATION MSAG - MAPPING SECTION 4801 BRIDGES RD. RALEIGH, NC 27606

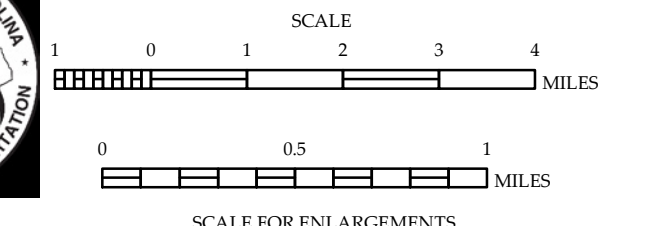


- LEGEND**
- UNPAVED SURFACED ROAD
  - HARD SURFACED ROAD
  - 4 LANE UNDIVIDED HIGHWAY
  - DIVIDED HIGHWAY INSET
  - DIVIDED HIGHWAY W/ FRONTAGE ROADS
  - FULL CONTROL ACCESS
  - NON-SYSTEM ROADS
  - PROJECTED LOCATION
  - NATIONAL PARK ROAD
  - BLEE RIDGE PARKWAY
  - INTERSECTION DISTANCE
  - TRAFFIC CIRCLE
  - DETAILED HIGHWAY INTERCHANGE
  - ROAD THROUGH MOUNTAIN PASS
  - HIGHWAY BRIDGE
  - UNDERPASS
  - OVERPASS
  - DRAW SPAN ON BRIDGE
  - HIGHWAY TUNNEL
  - FORD
  - INTERSTATE HIGHWAY
  - U.S. NUMBERED HIGHWAY
  - N.C. NUMBERED HIGHWAY
  - U.S. NUMBERED BICYCLE ROUTE
  - N.C. NUMBERED BICYCLE ROUTE
  - INTERSTATE INTERCHANGE NUMBER
  - SECONDARY ROAD NUMBER
  - UTILITY LINES
  - RAILROAD
  - RAILROAD STATION
  - GRADE CROSSING
  - INSET AREA
  - URBAN EXTENSION LINE
  - NATIONAL FOREST BOUNDARY
  - RESERVATION OR PARK BOUNDARY
  - STATE FOREST BOUNDARY
  - STATE GAZETTEMENT BOUNDARY
  - FEDERAL GAZETTEMENT BOUNDARY
  - MILITARY RESERVATION BOUNDARY
  - STATE LINE
  - COUNTY LINE
  - CITY LIMIT
  - FERRY ROUTE
  - CANAL
  - NARROW CREEK OR STREAM
  - WIDE RIVER OR CREEK
  - RESERVOIR, POND OR LAKE W/ ISLAND
  - DAM OR DAM WITH LOCK
  - WATERFALL
  - SWAMP
  - COMMUNITY, TOWN OR CITY CENTER
  - COUNTY SEAT
  - STATE CAPITAL
  - SCHOOL
  - COLLEGE OR UNIVERSITY
  - HOSPITAL
  - COAST GUARD STATION
  - CHURCH
  - CHURCH WITH CEMETERY
  - CEMETERY
  - PARK STATION
  - CORRECTION OR PENAL INSTITUTION
  - QUARRY
  - MINE OR PIT
  - HIGHWAY GARAGE OR MAINT. YARD
  - HIGHWAY DIV. OR DIST. OFFICE
  - POST OFFICE
  - MILITARY POST
  - WILDLIFE REFUGE
  - WEIGH STATION
  - FAIRGROUNDS
  - HISTORICAL SITE
  - POINTS OF INTEREST
  - STATE FOREST
  - LIGHTHOUSE
  - MOUNTAIN GAP
  - MOUNTAIN SUMMIT
  - OVERLOOK
  - CEMETIC MARKER
  - REST AREA
  - VISITOR CTR./REST AREA
  - WELCOME CTR./REST AREA
  - MAJOR AIRPORT
  - AIRPORT
  - MILITARY AIRPORT
  - HELIPORT

**2015 AADT**  
**ANNUAL AVERAGE DAILY TRAFFIC**  
**GENERATED BY THE**  
**TRAFFIC SURVEY GROUP**  
**TRANSPORTATION PLANNING BRANCH**

**DUPLIN COUNTY**  
**NORTH CAROLINA**

PREPARED BY THE  
 NORTH CAROLINA DEPARTMENT OF TRANSPORTATION  
 MANAGEMENT SYSTEMS AND ASSESSMENT UNIT - MAPPING SECTION  
 IN COOPERATION WITH THE  
 U.S. DEPARTMENT OF TRANSPORTATION  
 FEDERAL HIGHWAY ADMINISTRATION



10,000 FOOT GRID BASED ON NORTH CAROLINA PLANE COORDINATE SYSTEM  
 LAMBERT CONFORMAL CONIC PROJECTION



