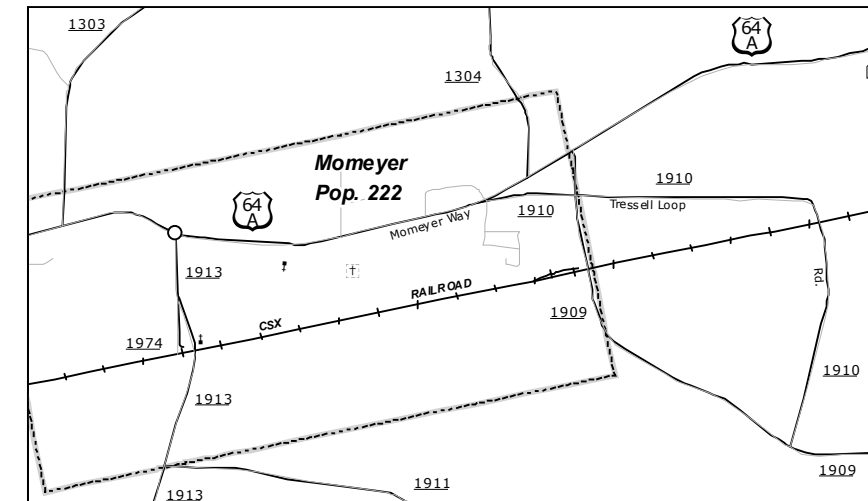
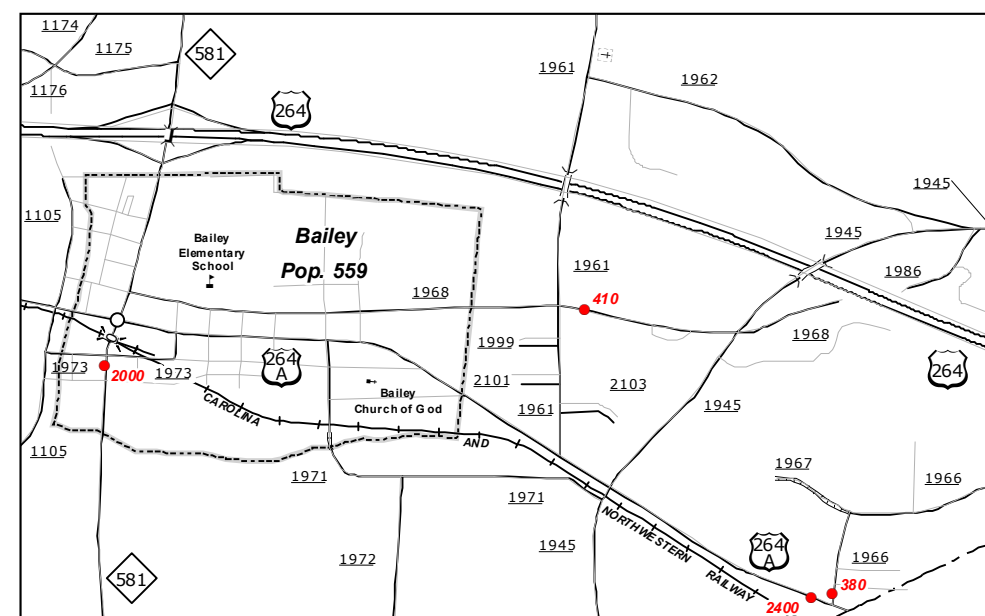


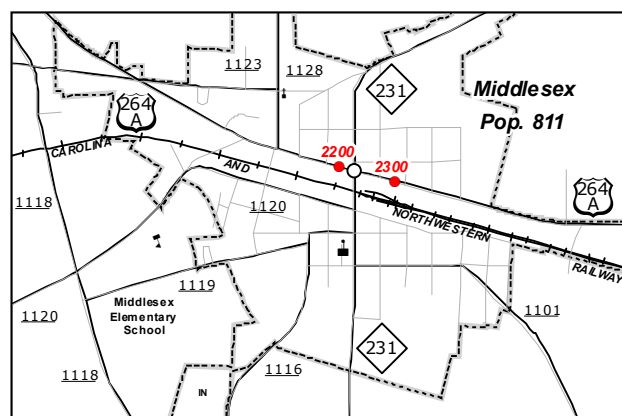
Spring Hope  
Pop. 1,327



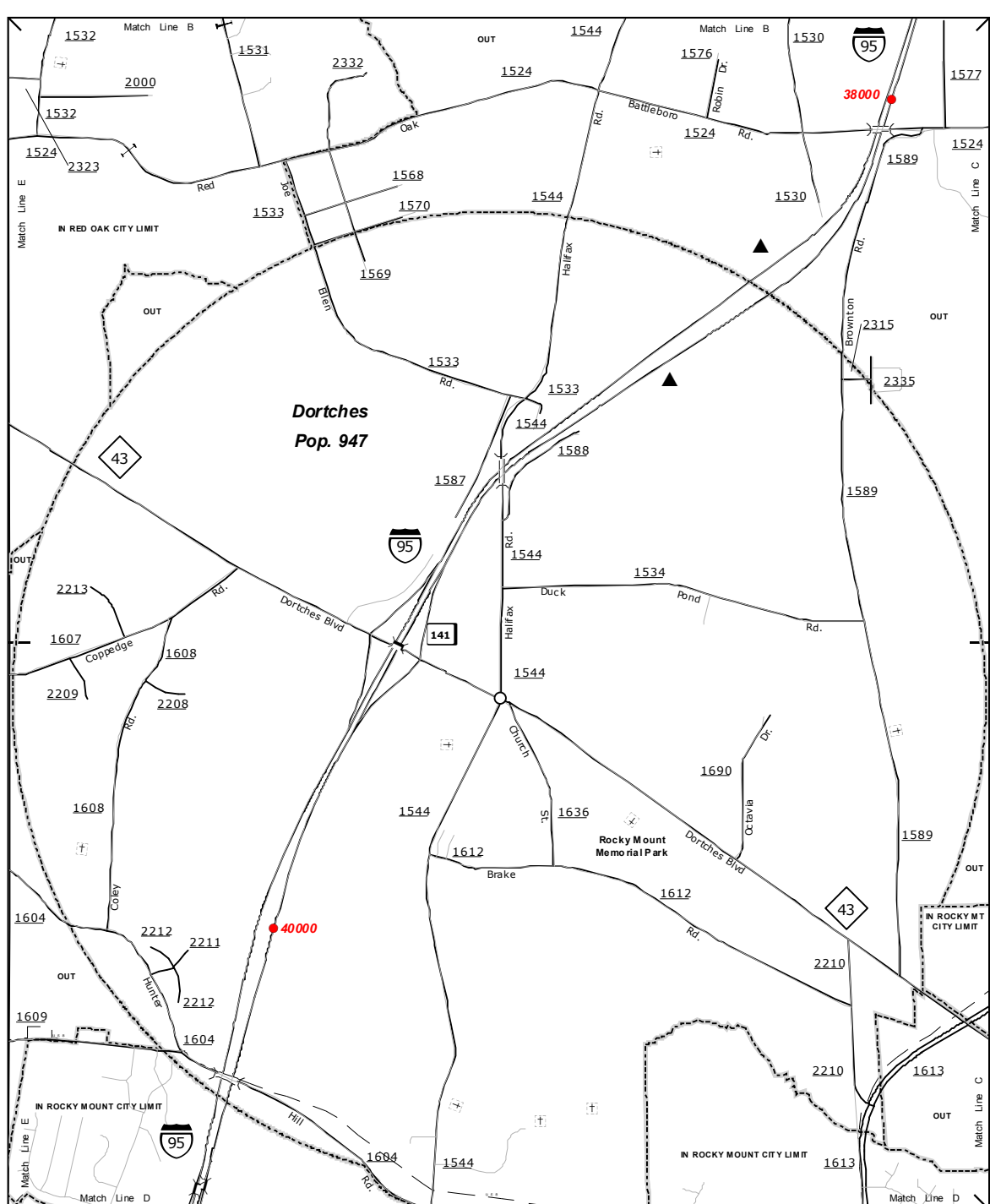
Momery  
Pop. 222



Bailey  
Pop. 559

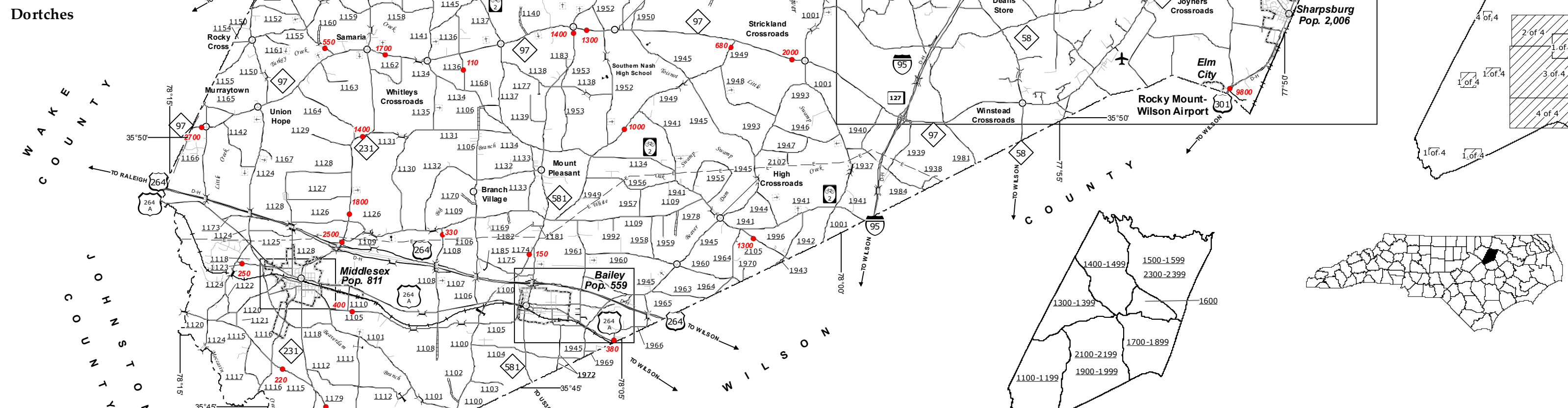


Middlesex  
Pop. 811



Dortches  
Pop. 947

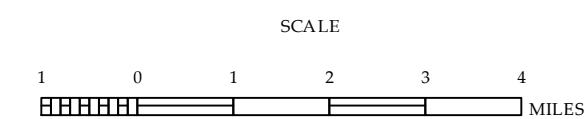
Dortches  
Pop. 947



**2014 AADT**  
ANNUAL AVERAGE DAILY TRAFFIC  
GENERATED BY THE  
TRAFFIC SURVEY GROUP  
TRANSPORTATION PLANNING BRANCH

**NASH COUNTY**  
NORTH CAROLINA

PREPARED BY THE  
NORTH CAROLINA DEPARTMENT OF TRANSPORTATION  
MANAGEMENT SYSTEMS AND ASSESSMENTS UNIT - MAPPING SECTION  
IN COOPERATION WITH THE  
U.S. DEPARTMENT OF TRANSPORTATION  
FEDERAL HIGHWAY ADMINISTRATION



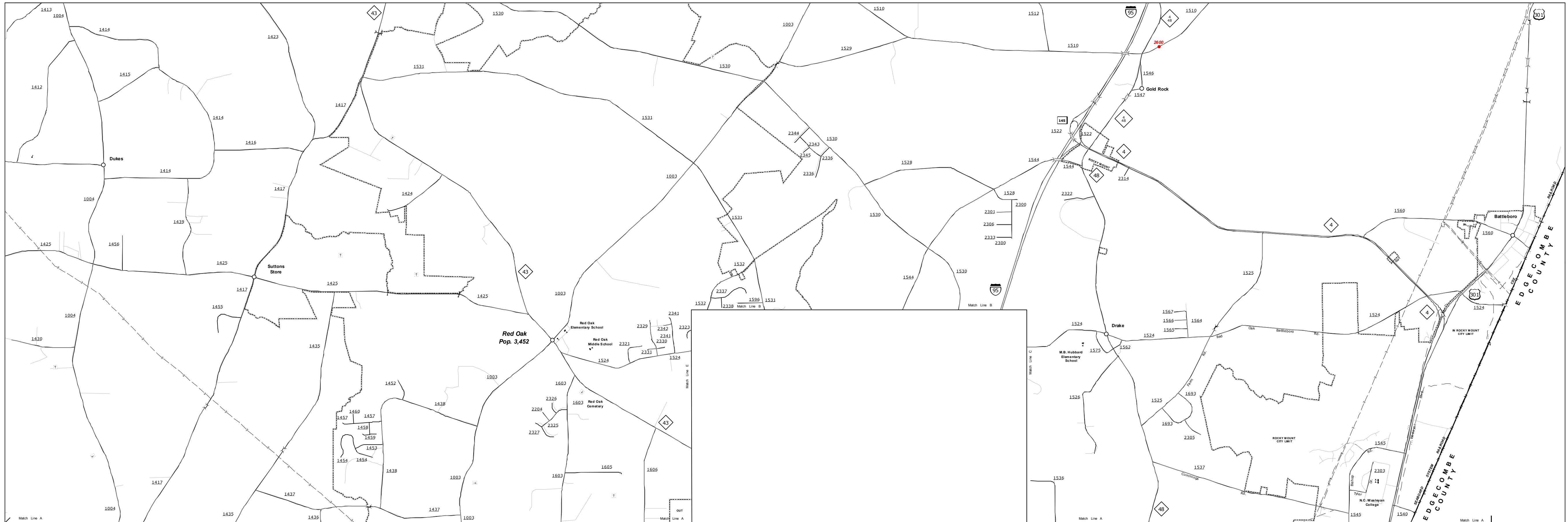
SCALE FOR ENLARGEMENTS

10,000 FOOT GRID BASED ON NORTH CAROLINA PLANE COORDINATE SYSTEM  
LAMBERT CONFORMAL CONIC PROJECTION

COPIES OF THIS MAP ARE AVAILABLE TO THE PUBLIC AT NOMINAL COST. ADDRESS: N.C. DEPARTMENT OF TRANSPORTATION 4809 BERRY RD RALEIGH, NC 27606

The NACTD's goal is to provide the most accurate and current information possible. Map data is compiled from numerous sources with varying dates of publication and map accuracy standards. As a result, the information shown on this map may not reflect the most current information available. For additional information, visit [www.ncdot.gov](http://www.ncdot.gov) or call 1-800-784-7661.





Red Oak

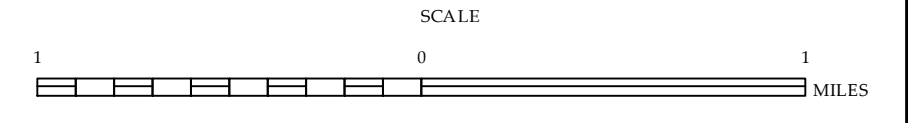
The MS&J's goal is to provide the most accurate and current information possible. Map data is compiled from numerous sources with varying scales of publication and map accuracy standards. As a result, the accuracy of the data provided will vary. Map includes state-maintained roads and important county state roads. The information shown on this map was last updated on June, 2015. For additional information, visit <http://www.msj.com> or call 704-948-9848.

COPIES OF THIS MAP ARE AVAILABLE TO THE PUBLIC AT A NOMINAL COST. ADDRESS: N.C. DEPARTMENT OF TRANSPORTATION MANAGEMENT SYSTEMS AND ASSESSMENTS UNIT - MAPPING SECTION 4800 BERRY LANE RALEIGH, NC 27608



**2014 AADT**  
 ANNUAL AVERAGE DAILY TRAFFIC  
 GENERATED BY THE  
**TRAFFIC SURVEY GROUP**  
 TRANSPORTATION PLANNING BRANCH  
**ENLARGED MUNICIPAL AND SUBURBAN AREAS**  
**NASH COUNTY**  
**NORTH CAROLINA**

PREPARED BY THE  
 NORTH CAROLINA DEPARTMENT OF TRANSPORTATION  
 MANAGEMENT SYSTEMS AND ASSESSMENTS UNIT - MAPPING SECTION  
 IN COOPERATION WITH THE  
 U.S. DEPARTMENT OF TRANSPORTATION  
 FEDERAL HIGHWAY ADMINISTRATION



10,000 FOOT GRID BASED ON NORTH CAROLINA PLANE COORDINATE SYSTEM  
 LAMBERT CONFORMAL CONIC PROJECTION

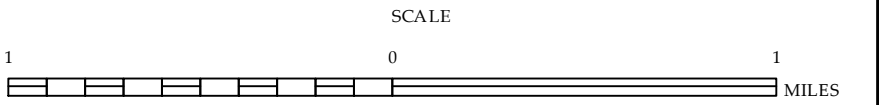




SEE 2013  
ROCKY MOUNT  
URBAN



**2014 AADT**  
ANNUAL AVERAGE DAILY TRAFFIC  
GENERATED BY THE  
**TRAFFIC SURVEY GROUP**  
TRANSPORTATION PLANNING BRANCH  
ENLARGED MUNICIPAL AND SUBURBAN AREAS  
**NASH COUNTY**  
NORTH CAROLINA  
PREPARED BY THE  
NORTH CAROLINA DEPARTMENT OF TRANSPORTATION  
MANAGEMENT SYSTEMS AND ASSESSMENTS UNIT - MAPPING SECTION  
IN COOPERATION WITH THE  
U.S. DEPARTMENT OF TRANSPORTATION  
FEDERAL HIGHWAY ADMINISTRATION

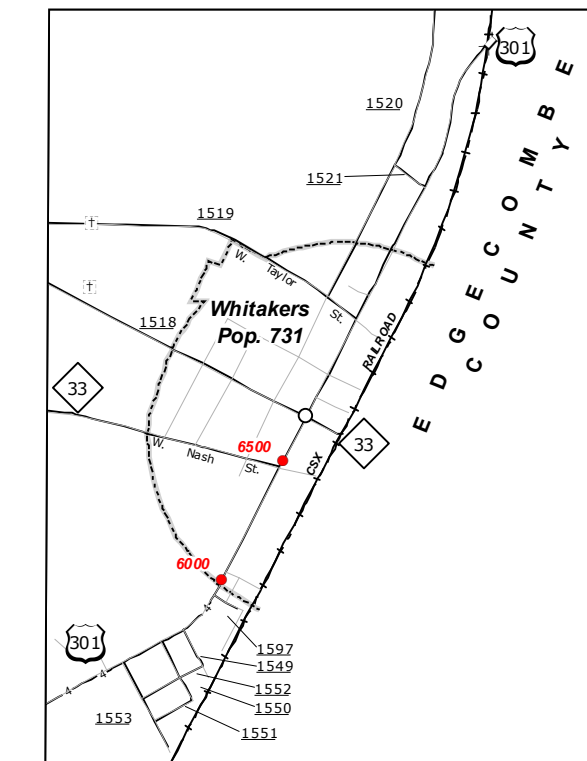
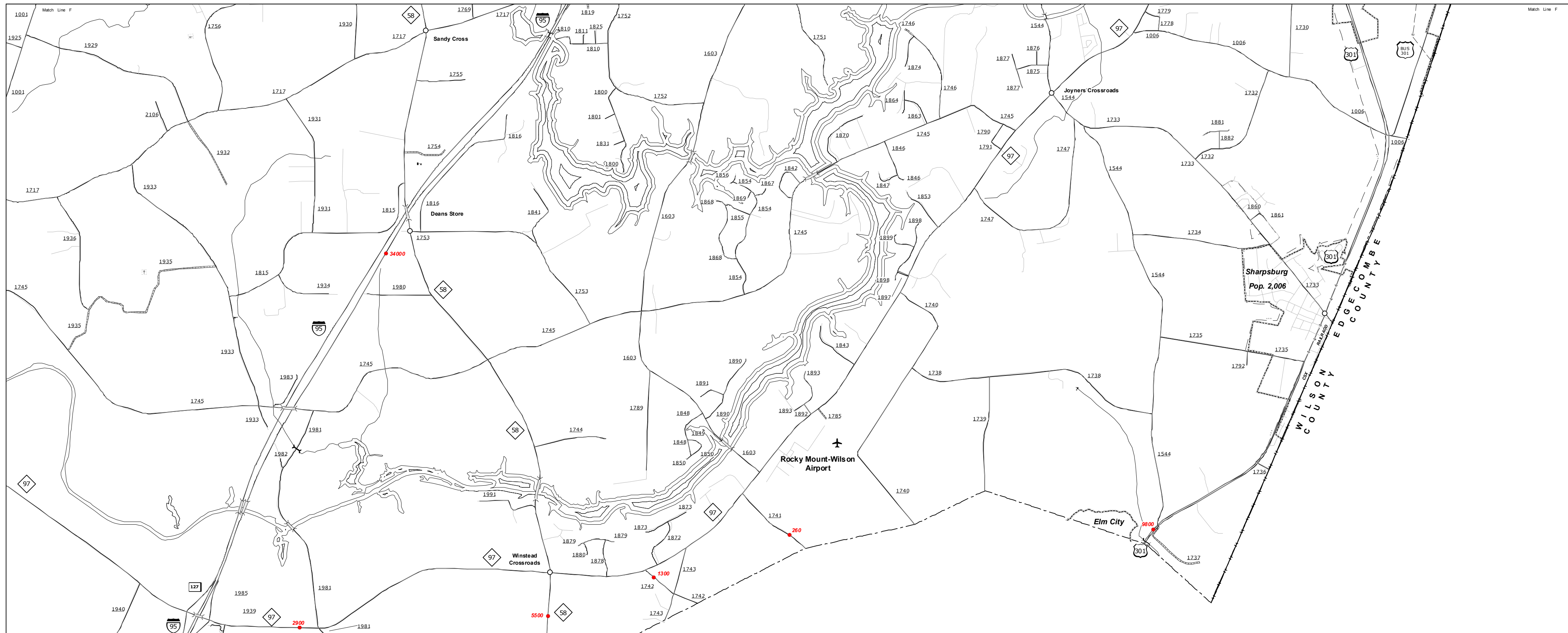


10,000 FOOT GRID BASED ON NORTH CAROLINA PLANE COORDINATE SYSTEM  
LAMBERT CONFORMAL CONIC PROJECTION

Rocky Mount

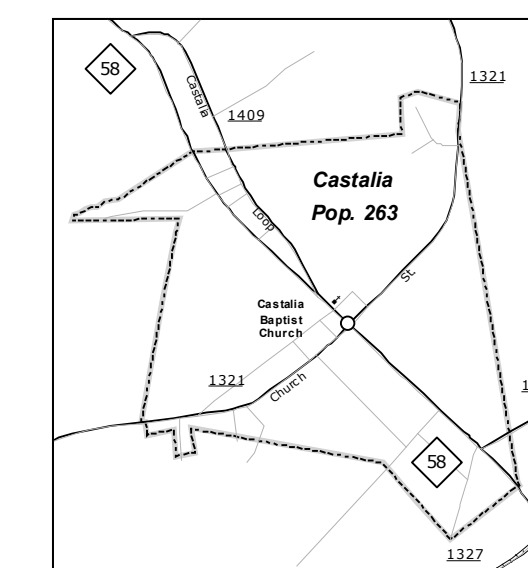
COPIES OF THIS MAP ARE AVAILABLE TO THE PUBLIC AT NO CHARGE. ADDRESS: N.C. DEPARTMENT OF TRANSPORTATION, MANAGEMENT SYSTEMS AND ASSESSMENTS UNIT, 4800 BERRY LANE, RALEIGH, NC 27608.





Whitakers

Shaprsburg

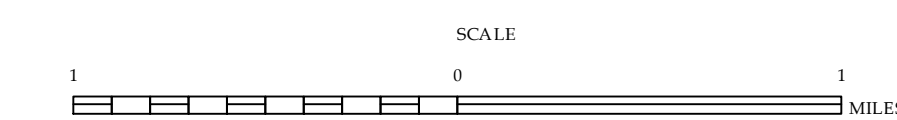


Castalia



**2014 AADT**  
 ANNUAL AVERAGE DAILY TRAFFIC  
 GENERATED BY THE  
**TRAFFIC SURVEY GROUP**  
 TRANSPORTATION PLANNING BRANCH  
 ENLARGED MUNICIPAL AND SUBURBAN AREAS  
**NASH COUNTY**  
 NORTH CAROLINA

PREPARED BY THE  
 NORTH CAROLINA DEPARTMENT OF TRANSPORTATION  
 MANAGEMENT SYSTEMS AND ASSESSMENTS UNIT - MAPPING SECTION  
 IN COOPERATION WITH THE  
 U.S. DEPARTMENT OF TRANSPORTATION  
 FEDERAL HIGHWAY ADMINISTRATION



10,000 FOOT GRID BASED ON NORTH CAROLINA PLANE COORDINATE SYSTEM  
 LAMBERT CONFORMAL CONIC PROJECTION

The MS&J's goal is to provide the most accurate and current information possible. Map data is compiled from numerous sources with varying dates of publication and map accuracy standards. As a result, the accuracy of the data provided will vary. Map includes state-maintained roads and important county state roads. The information shown on this map was last updated on June, 2015. For additional information, visit <http://www.msandj.com> or call 1-800-368-5948.

COPIES OF THIS MAP ARE AVAILABLE TO THE PUBLIC AT NOMINAL COST. ADDRESS: N.C. DEPARTMENT OF TRANSPORTATION MANAGEMENT SYSTEMS AND ASSESSMENTS UNIT - MAPPING SECTION 4809 BERRY LANE RALEIGH, NC 27606