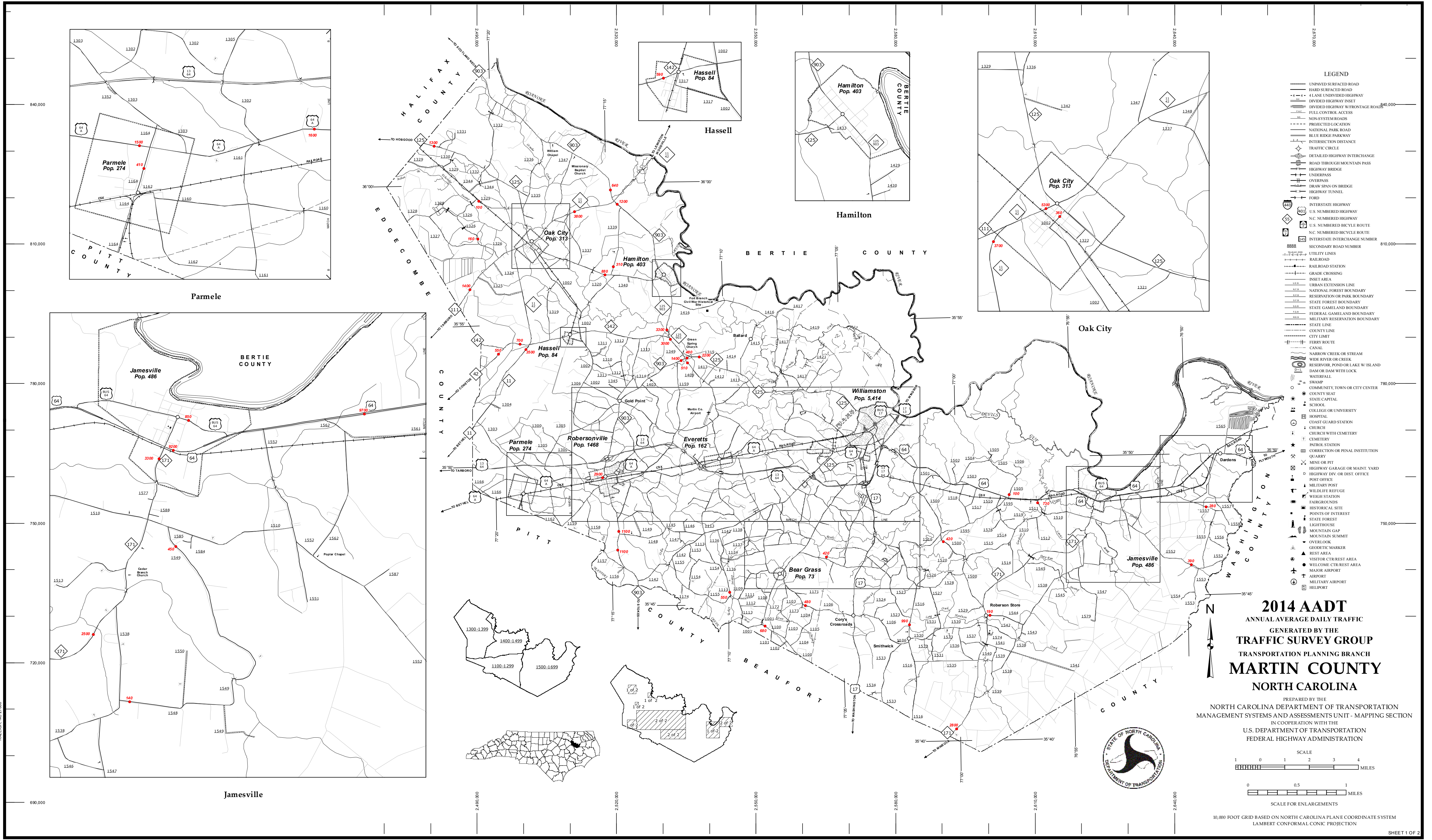


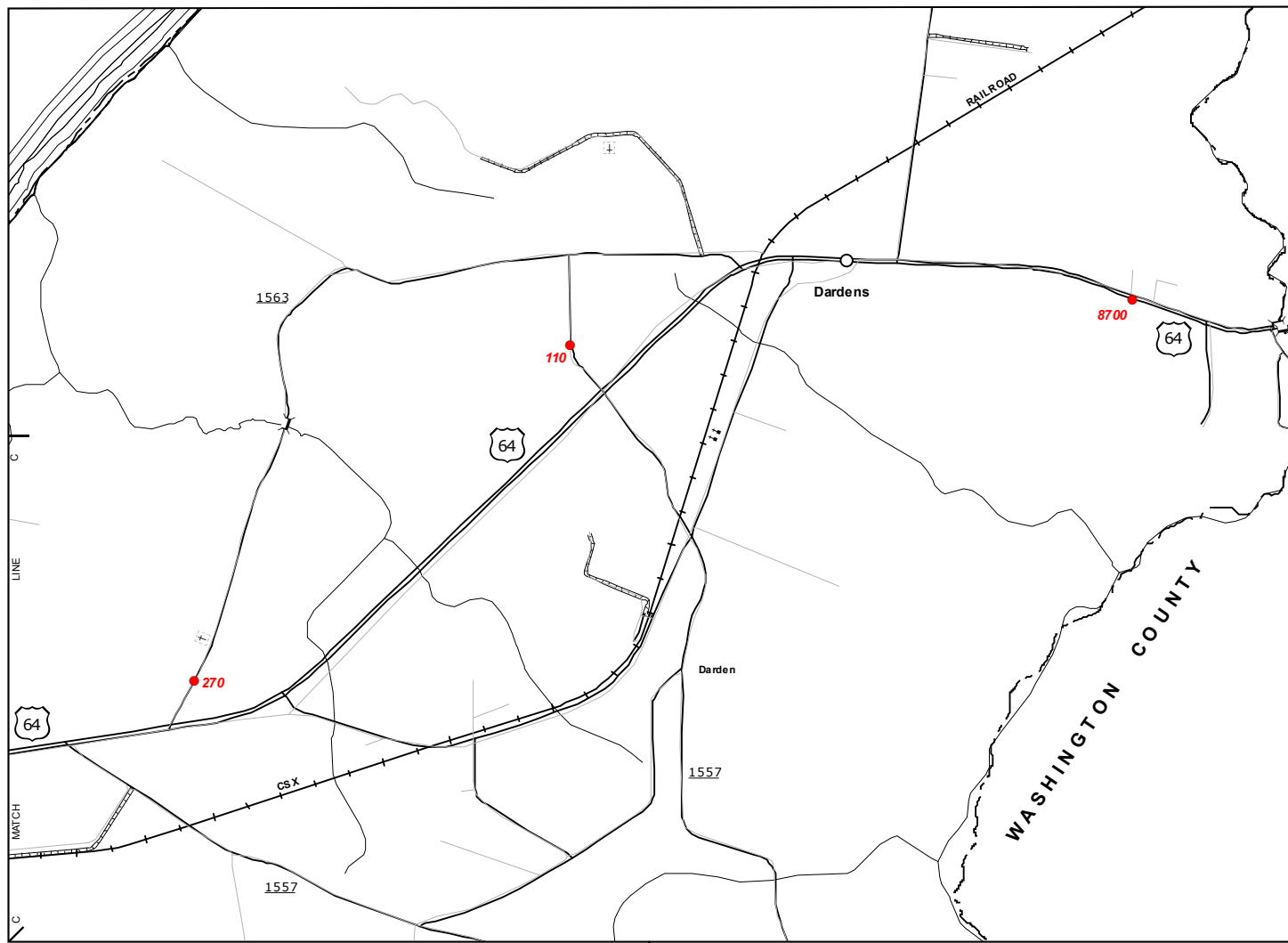
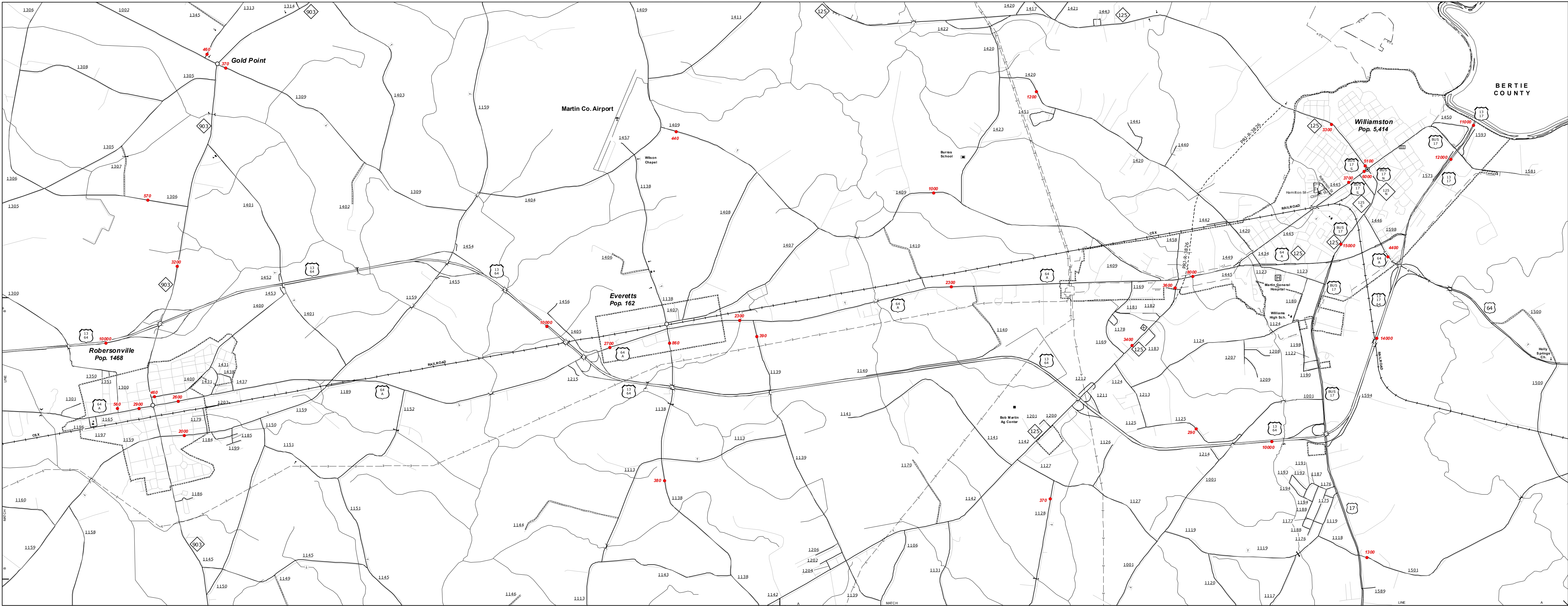
The NSAU's goal is to provide the most accurate and current information possible. Map data is compiled from numerous sources with varying dates of publication and map accuracy standards. As a result, the accuracy of the data provided will vary. Map features include major roads, highways, and important points of interest. The information shown on this map was last updated on June 2015. For additional information, visit www.ncdot.gov. All data is subject to change without notice.

COPIES OF THIS MAP ARE AVAILABLE TO THE PUBLIC AT NO CHARGE. ADDRESS: N.C. DEPARTMENT OF TRANSPORTATION, 4809 BERRY LANE, RALEIGH, NC 27606



The NSAU's goal is to provide the most accurate and current information possible. Map data is compiled from numerous sources with varying data of publication and map accuracy standards. As a result, the accuracy of the data provided will vary. Map focuses data on major roads and important transportation features. The information shown on this map was last updated on June, 2015. For additional information, visit <http://www.ncdot.gov>. All data is current as of the date of publication.

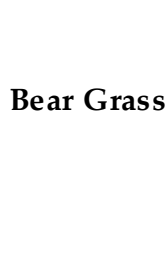
COPIES OF THIS MAP ARE AVAILABLE TO THE PUBLIC AT NO CHARGE. ADDRESS: N.C. DEPARTMENT OF TRANSPORTATION, 4809 BERRY RD, RALEIGH, NC 27606



Darden

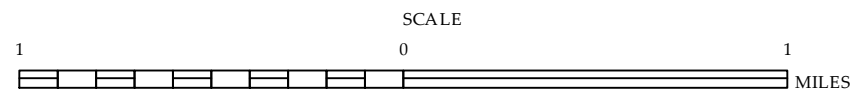


Robersonville, Williamston and Vicinity



2014 AADT
ANNUAL AVERAGE DAILY TRAFFIC
GENERATED BY THE
TRAFFIC SURVEY GROUP
TRANSPORTATION PLANNING BRANCH
ENLARGED MUNICIPAL AND SUBURBAN AREAS
MARTIN COUNTY
NORTH CAROLINA

PREPARED BY THE
NORTH CAROLINA DEPARTMENT OF TRANSPORTATION
MANAGEMENT SYSTEMS AND ASSESSMENTS UNIT - MAPPING SECTION
IN COOPERATION WITH THE
U.S. DEPARTMENT OF TRANSPORTATION
FEDERAL HIGHWAY ADMINISTRATION



10,000 FOOT GRID BASED ON NORTH CAROLINA PLANE COORDINATE SYSTEM
LAMBERT CONFORMAL CONIC PROJECTION

SHEET 2 OF 2