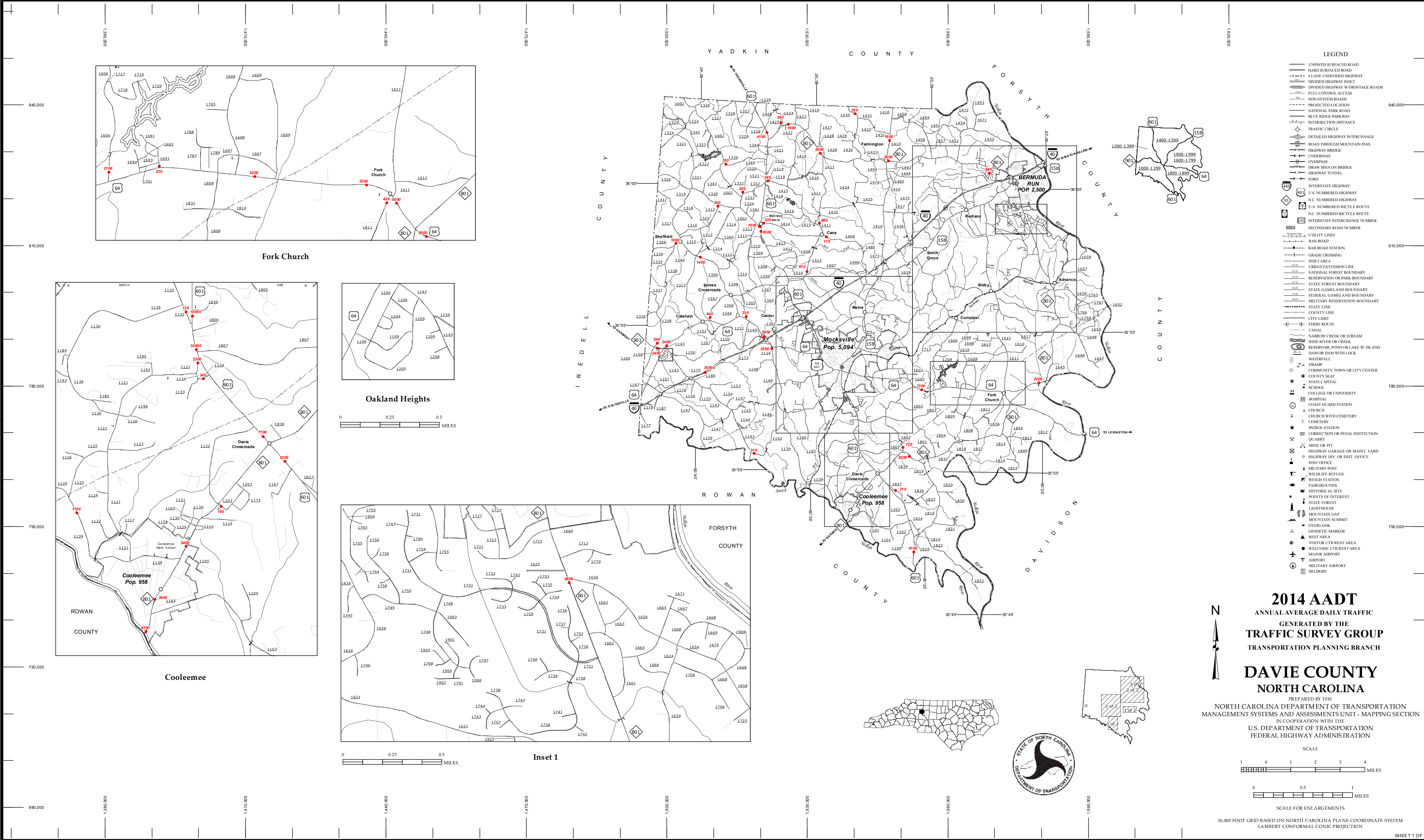


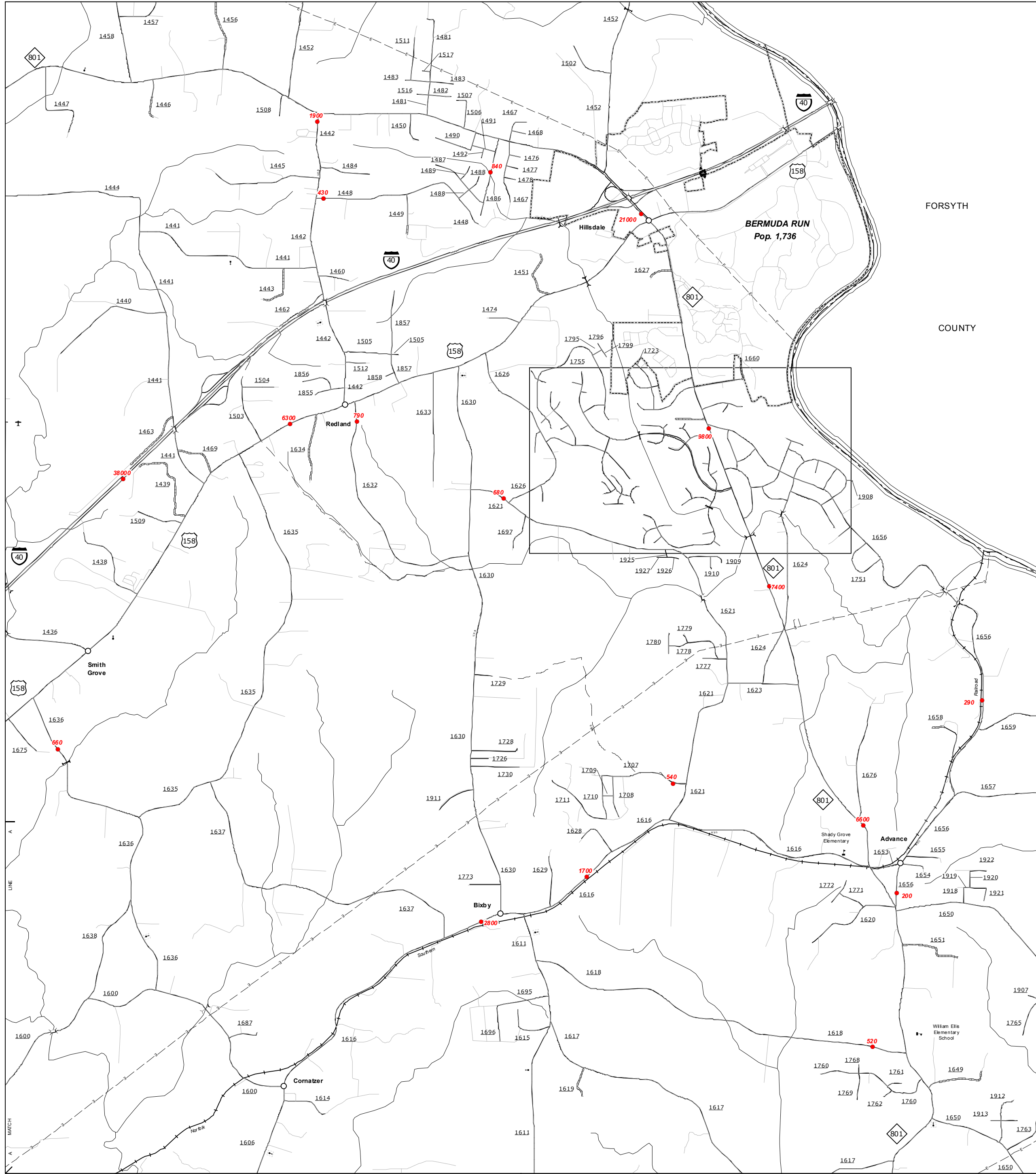
NOTE: Map includes only state-maintained roads and important non-surfaced roads. Map also includes all federal and state highways. All other roads, local agencies, and are shown in their appropriate location. Information on this map is current up to June, 2015.

COPIES OF THIS MAP ARE AVAILABLE TO THE PUBLIC AT NO CHARGE. TO THE PUBLICATIONS COST. ADDRESS: N.C. DEPARTMENT OF TRANSPORTATION 4809 BERRY RD. RALEIGH, NC 27606

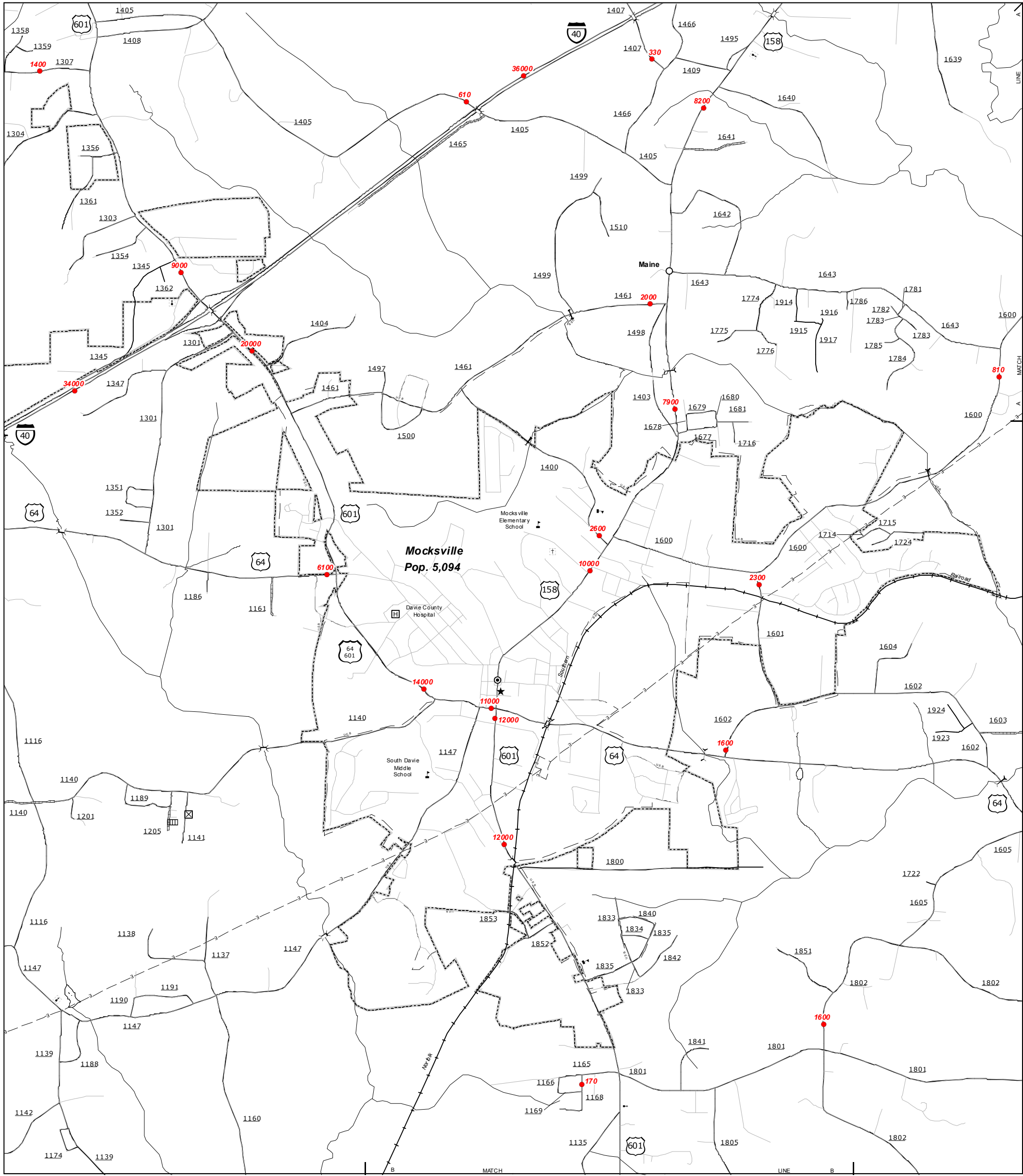


COPIES OF THIS MAP ARE AVAILABLE
TO THE PUBLIC AT NO CHARGE.
N.C. DEPARTMENT OF TRANSPORTATION
4809 BERRY RD
RALEIGH, NC 27606

NOTE: Map includes only state-maintained roads
and important non-state-maintained roads. Map also includes
county boundaries. County names are shown in their approximate
locations. Federal agencies and are shown in their approximate
locations. Information on this map is current up to June, 2015.



Bermuda Run



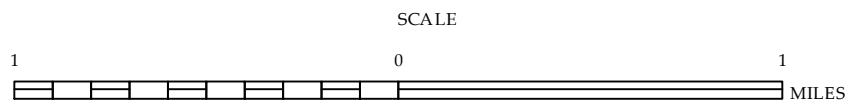
Mocksville

2014 AADT
ANNUAL AVERAGE DAILY TRAFFIC
GENERATED BY THE
TRAFFIC SURVEY GROUP
TRANSPORTATION PLANNING BRANCH

ENLARGED MUNICIPAL AND SUBURBAN AREAS

DAVIE COUNTY
NORTH CAROLINA

PREPARED BY THE
NORTH CAROLINA DEPARTMENT OF TRANSPORTATION
MANAGEMENT SYSTEMS AND ASSESSMENTS UNIT - MAPPING SECTION
IN COOPERATION WITH THE
U.S. DEPARTMENT OF TRANSPORTATION
FEDERAL HIGHWAY ADMINISTRATION



10,000 FOOT GRID BASED ON NORTH CAROLINA PLANE COORDINATE SYSTEM
LAMBERT CONFORMAL CONIC PROJECTION