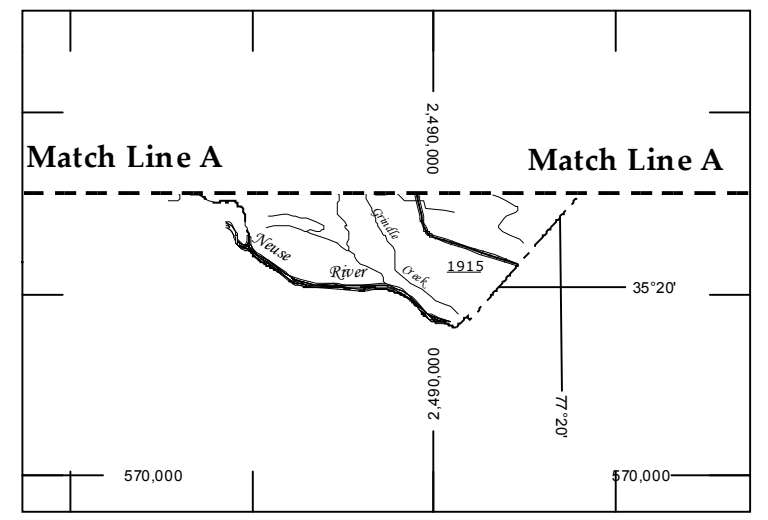


LEGEND

- UNPAVED SURFACED ROAD
- HARD SURFACED ROAD
- 4 LANE UNDIVIDED HIGHWAY
- DIVIDED HIGHWAY INSET
- DIVIDED HIGHWAY W/FRONTAGE ROADS
- FULL CONTROL ACCESS
- NON-SYSTEM ROADS
- PROJECTED LOCATION
- NATIONAL PARK ROAD
- BLUE RIDGE PARKWAY
- INTERSECTION DISTANCE
- TRAFFIC CIRCLE
- DETAILED HIGHWAY INTERCHANGE
- ROAD THROUGH MOUNTAIN PASS
- HIGHWAY BRIDGE
- UNDERPASS
- OVERPASS
- DRAW SPAN OR BRIDGE
- HIGHWAY TUNNEL
- FORD
- INTERSTATE HIGHWAY
- U.S. NUMBERED HIGHWAY
- N.C. NUMBERED HIGHWAY
- U.S. NUMBERED BICYCLE ROUTE
- N.C. NUMBERED BICYCLE ROUTE
- INTERSTATE INTERCHANGE NUMBER
- SECONDARY ROAD NUMBER
- UTILITY LINES
- RAILROAD
- RAILROAD STATION
- RAILROAD CROSSING
- GRADE CROSSING
- INSET AREA
- URBAN EXTENSION LINE
- NATIONAL FOREST BOUNDARY
- RESERVATION OR PARK BOUNDARY
- STATE FOREST BOUNDARY
- STATE GAZETTEMENT BOUNDARY
- FEDERAL GAZETTEMENT BOUNDARY
- MILITARY RESERVATION BOUNDARY
- STATE LINE
- COUNTY LINE
- CITY LIMIT
- FERRY ROUTE
- CANAL
- NARROW CREEK OR STREAM
- WIDE RIVER OR CREEK
- RESERVOIR, POND OR LAKE W/ ISLAND
- DAM OR DAM WITH LOCK
- WATERFALL
- SWAMP
- COMMUNITY, TOWN OR CITY CENTER
- COUNTY SEAT
- STATE CAPITAL
- SCHOOL
- COLLEGE OR UNIVERSITY
- HOSPITAL
- COAST GUARD STATION
- CHURCH
- CHURCH WITH CEMETERY
- CEMETERY
- PARK STATION
- CORRECTION OR PENAL INSTITUTION
- QUARRY
- MINE OR PIT
- HIGHWAY GARAGE OR MAINT. YARD
- HIGHWAY DIV. OR DIST. OFFICE
- POST OFFICE
- MILITARY POST
- WILDLIFE REFUGE
- WEIGH STATION
- FAIRGROUNDS
- HISTORICAL SITE
- POINTS OF INTEREST
- STATE FOREST
- LIGHTHOUSE
- MOUNTAIN GAP
- MOUNTAIN SUMMIT
- OVERLOOK
- GEODETIC MARKER
- REST AREA
- VISITOR CTR/REST AREA
- WELCOME CTR/REST AREA
- MAJOR AIRPORT
- AIRPORT
- MILITARY AIRPORT
- HELIPORT

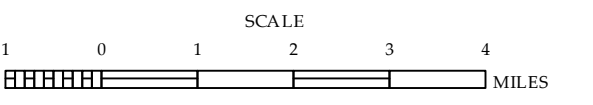
COPIES OF THIS MAP ARE AVAILABLE
 AT THE FOLLOWING ADDRESS:
 N.C. DEPARTMENT OF TRANSPORTATION
 MS&U - MAPPING SECTION
 400 WEST 7TH STREET, 2ND FLOOR
 RALEIGH, N.C. 27603



2013 AADT
 ANNUAL AVERAGE DAILY TRAFFIC
 GENERATED BY THE
TRAFFIC SURVEY GROUP
 TRANSPORTATION PLANNING BRANCH

PITT COUNTY
NORTH CAROLINA

PREPARED BY THE
 NORTH CAROLINA DEPARTMENT OF TRANSPORTATION
 MANAGEMENT SYSTEMS AND ASSESSMENTS UNIT - MAPPING SECTION
 IN COOPERATION WITH THE
 U.S. DEPARTMENT OF TRANSPORTATION
 FEDERAL HIGHWAY ADMINISTRATION



10,000 FOOT GRID BASED ON NORTH CAROLINA PLANE COORDINATE SYSTEM
 LAMBERT CONFORMAL CONIC PROJECTION

COPIES OF THIS MAP ARE AVAILABLE
FOR PURCHASE AT A NOMINAL COST.
ADDRESS:
N.C. DEPARTMENT OF TRANSPORTATION
MS&U - MAPPING SECTION
RAVENEL, N.C. 27066
PHONE: 704/771-6000

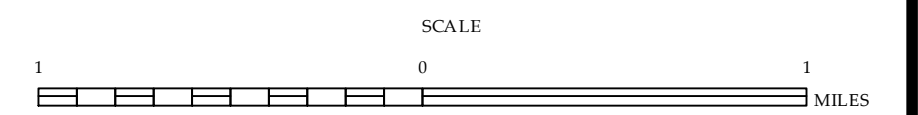


Grifton

2013 AADT
ANNUAL AVERAGE DAILY TRAFFIC
GENERATED BY THE
TRAFFIC SURVEY GROUP
TRANSPORTATION PLANNING BRANCH

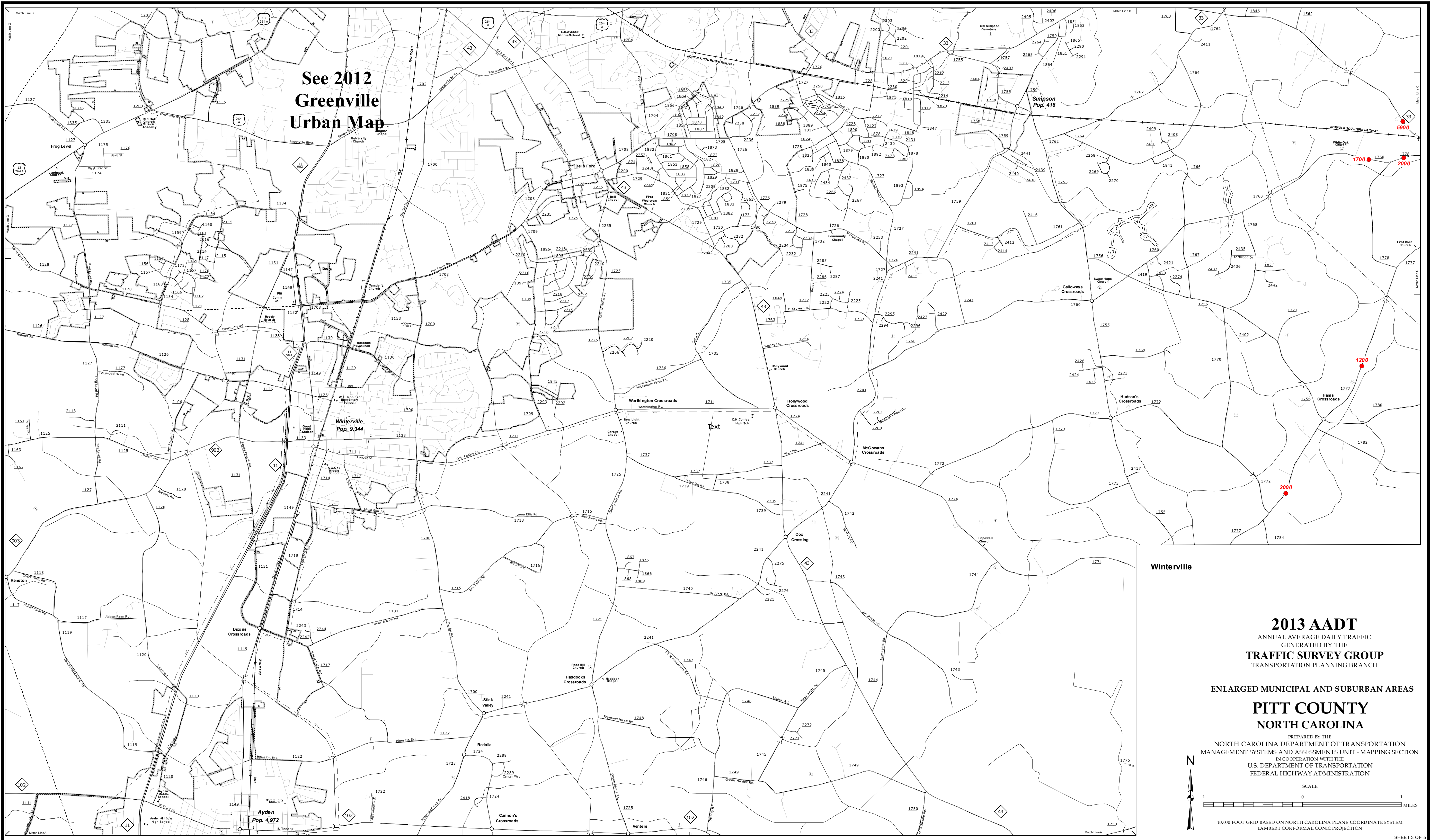
ENLARGED MUNICIPAL AND SUBURBAN AREAS
PITT COUNTY
NORTH CAROLINA

PREPARED BY THE
NORTH CAROLINA DEPARTMENT OF TRANSPORTATION
MANAGEMENT SYSTEMS AND ASSESSMENTS UNIT - MAPPING SECTION
IN COOPERATION WITH THE
U.S. DEPARTMENT OF TRANSPORTATION
FEDERAL HIGHWAY ADMINISTRATION



10,000 FOOT GRID BASED ON NORTH CAROLINA PLANE COORDINATE SYSTEM
LAMBERT CONFORMAL CONIC PROJECTION

See 2012
Greenville
Urban Map

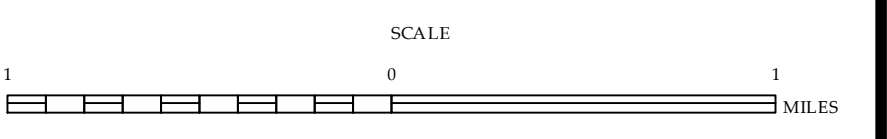
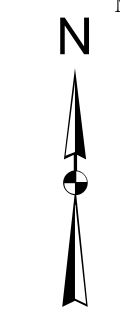


Winterville

2013 AADT
ANNUAL AVERAGE DAILY TRAFFIC
GENERATED BY THE
TRAFFIC SURVEY GROUP
TRANSPORTATION PLANNING BRANCH

ENLARGED MUNICIPAL AND SUBURBAN AREAS
PITT COUNTY
NORTH CAROLINA

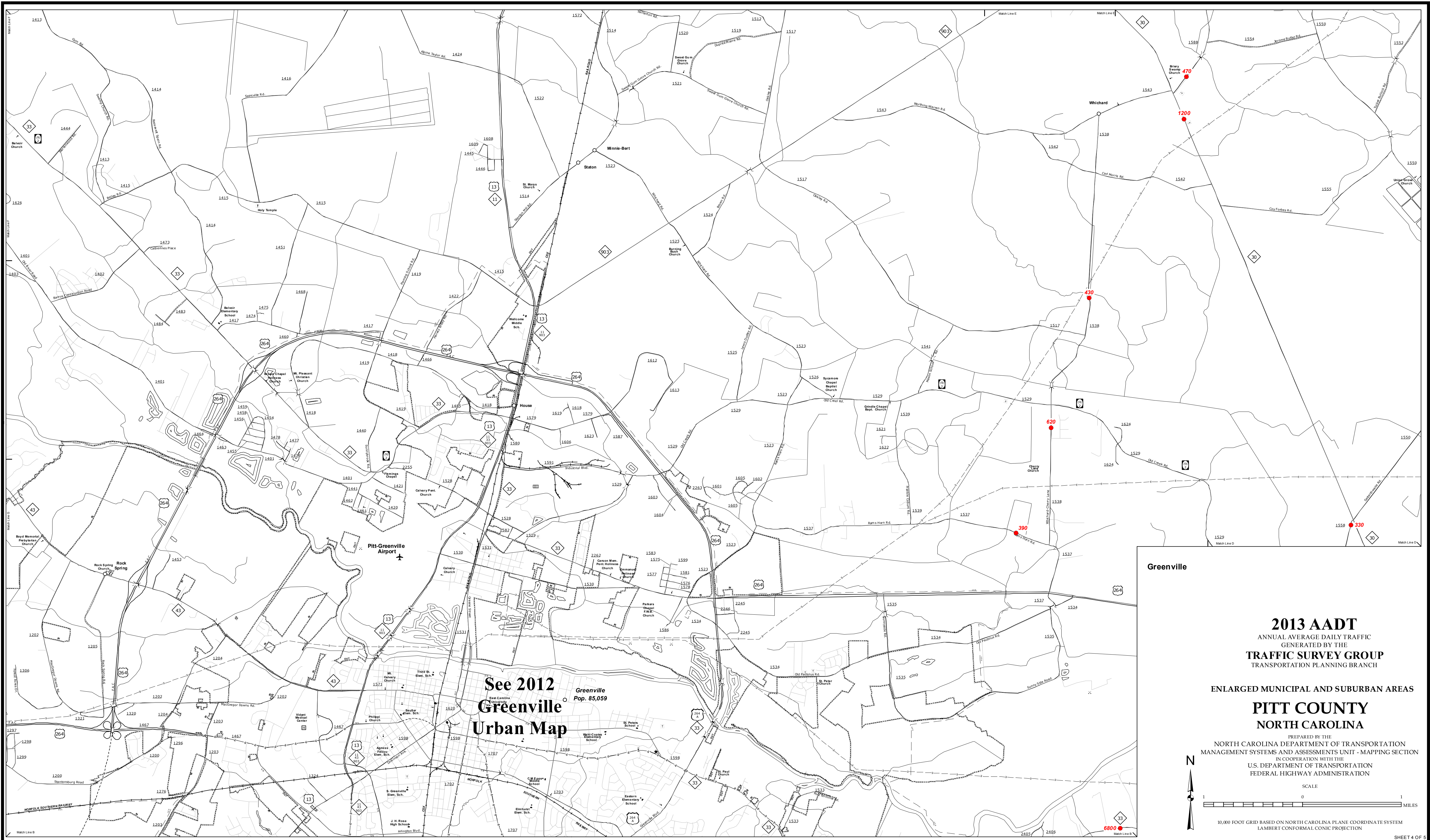
PREPARED BY THE
NORTH CAROLINA DEPARTMENT OF TRANSPORTATION
MANAGEMENT SYSTEMS AND ASSESSMENTS UNIT - MAPPING SECTION
IN COOPERATION WITH THE
U.S. DEPARTMENT OF TRANSPORTATION
FEDERAL HIGHWAY ADMINISTRATION



10,000 FOOT GRID BASED ON NORTH CAROLINA PLANE COORDINATE SYSTEM
LAMBERT CONFORMAL CONIC PROJECTION

COPIES OF THIS MAP ARE AVAILABLE
FOR PURCHASE AT A NOMINAL COST.
ADDRESS:
N.C. DEPARTMENT OF TRANSPORTATION
MSAU - MAPPING SECTION
Raleigh, NC 27608

COPIES OF THIS MAP ARE AVAILABLE
FOR PURCHASE AT A NOMINAL COST.
ADDRESS:
N.C. DEPARTMENT OF TRANSPORTATION
MS&U - MAPPING SECTION
RAVENEL, N.C. 27080



Greenville

2013 AADT
ANNUAL AVERAGE DAILY TRAFFIC
GENERATED BY THE
TRAFFIC SURVEY GROUP
TRANSPORTATION PLANNING BRANCH

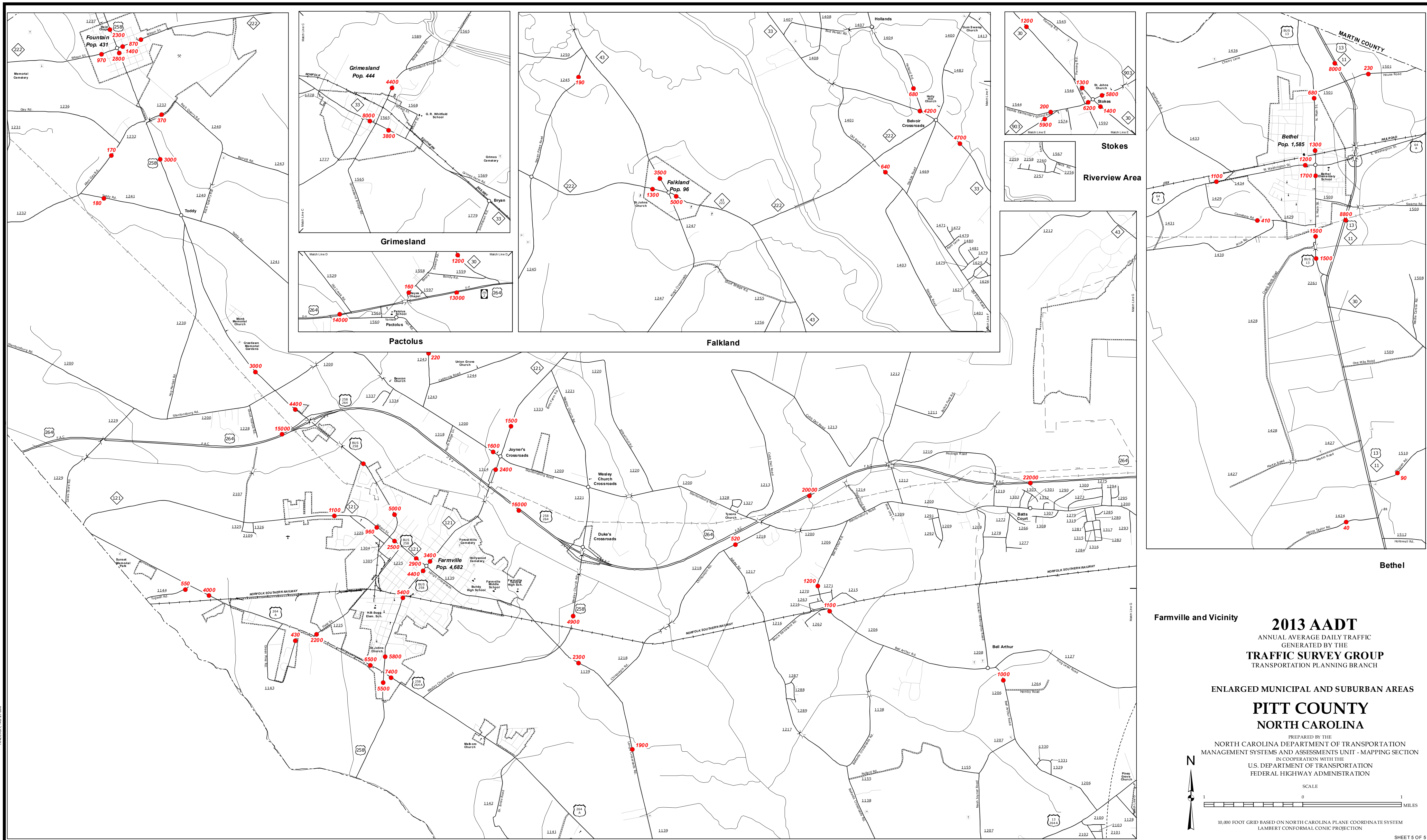
ENLARGED MUNICIPAL AND SUBURBAN AREAS
PITT COUNTY
NORTH CAROLINA

PREPARED BY THE
NORTH CAROLINA DEPARTMENT OF TRANSPORTATION
MANAGEMENT SYSTEMS AND ASSESSMENTS UNIT - MAPPING SECTION
IN COOPERATION WITH THE
U.S. DEPARTMENT OF TRANSPORTATION
FEDERAL HIGHWAY ADMINISTRATION

SCALE
1 0 1
MILES

10,000 FOOT GRID BASED ON NORTH CAROLINA PLANE COORDINATE SYSTEM
LAMBERT CONFORMAL CONIC PROJECTION

SHEET 4 OF 5



COPIES OF THIS MAP ARE AVAILABLE
 AT A REPRODUCTION COST.
 ADDRESS:
 N.C. DEPARTMENT OF TRANSPORTATION
 MS&U - MAPPING SECTION
 RALEIGH, N.C. 27606

Farmville and Vicinity

2013 AADT
 ANNUAL AVERAGE DAILY TRAFFIC
 GENERATED BY THE
TRAFFIC SURVEY GROUP
 TRANSPORTATION PLANNING BRANCH

ENLARGED MUNICIPAL AND SUBURBAN AREAS

PITT COUNTY
NORTH CAROLINA

PREPARED BY THE
 NORTH CAROLINA DEPARTMENT OF TRANSPORTATION
 MANAGEMENT SYSTEMS AND ASSESSMENTS UNIT - MAPPING SECTION
 IN COOPERATION WITH THE
 U.S. DEPARTMENT OF TRANSPORTATION
 FEDERAL HIGHWAY ADMINISTRATION

SCALE
 0 1
 MILES

10,000 FOOT GRID BASED ON NORTH CAROLINA PLANE COORDINATE SYSTEM
 LAMBERT CONFORMAL CONIC PROJECTION

SHEET 5 OF 5