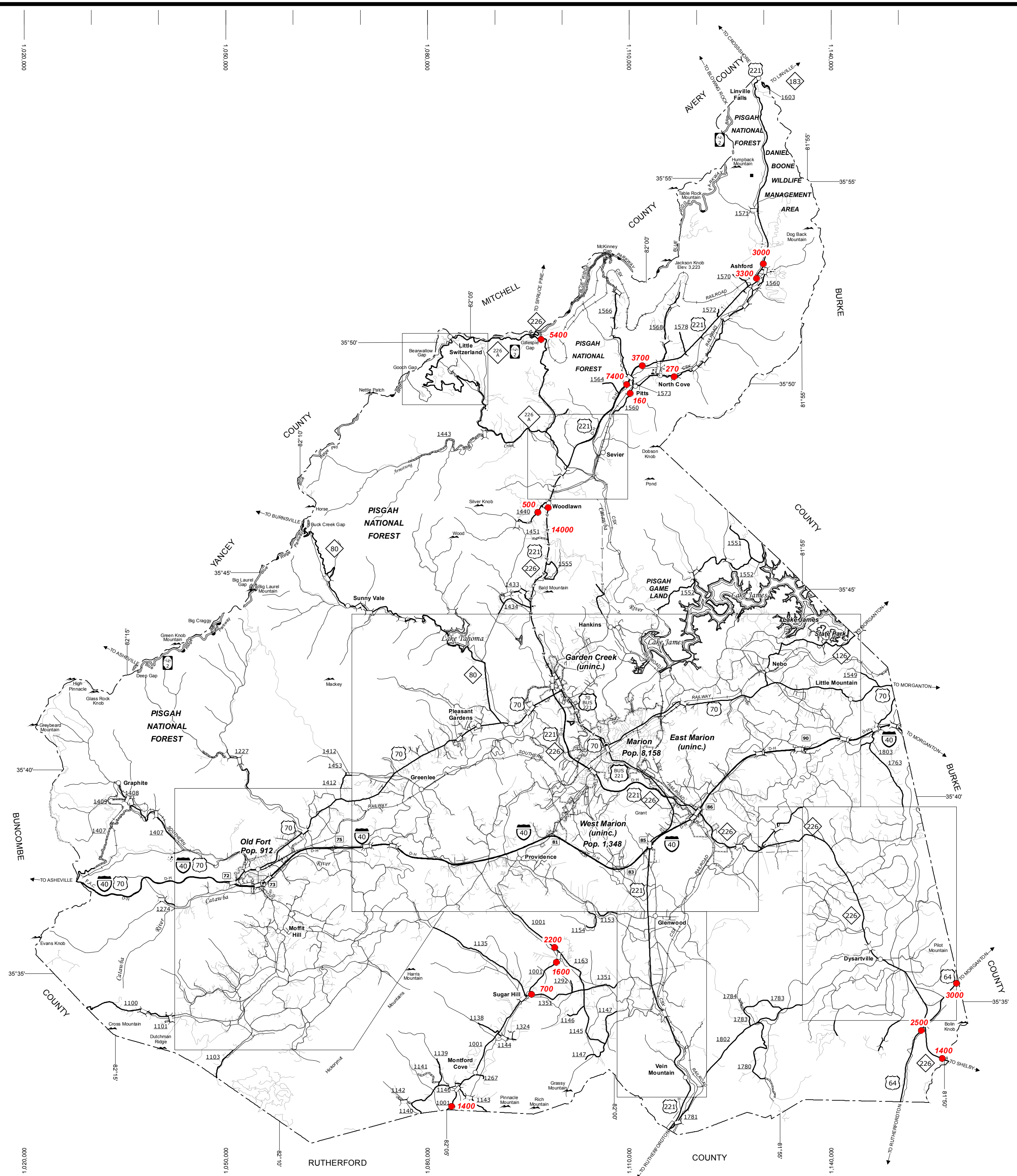


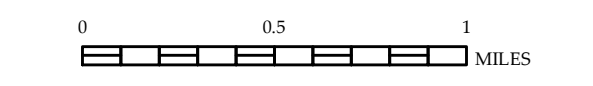
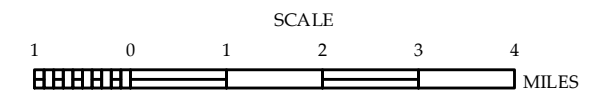
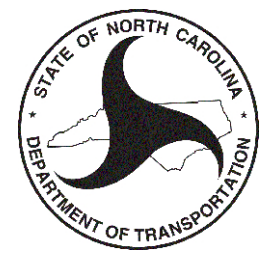
Vein Mountain



- LEGEND**
- UNPAVED SURFACED ROAD
  - HARD SURFACED ROAD
  - 4 LANE UNDIVIDED HIGHWAY
  - DIVIDED HIGHWAY INSET
  - DIVIDED HIGHWAY W/FRONTAGE ROADS
  - FULL CONTROL ACCESS
  - NON-SYSTEM ROADS
  - PROJECTED LOCATION
  - NATIONAL PARK ROAD
  - BI-LEVEL PARKWAY
  - INTERSECTION DISTANCE
  - TRAFFIC CIRCLE
  - DETAILED HIGHWAY INTERCHANGE
  - ROAD THROUGH MOUNTAIN PASS
  - HIGHWAY BRIDGE
  - UNDERPASS
  - OVERPASS
  - DRAW SPAN ON BRIDGE
  - HIGHWAY TUNNEL
  - FORD
  - INTERSTATE HIGHWAY
  - U.S. NUMBERED HIGHWAY
  - N.C. NUMBERED HIGHWAY
  - U.S. NUMBERED BICYCLE ROUTE
  - N.C. NUMBERED BICYCLE ROUTE
  - INTERSTATE INTERCHANGE NUMBER
  - SECONDARY ROAD NUMBER
  - UTILITY LINES
  - RAILROAD
  - RAILROAD STATION
  - GRADE CROSSING
  - INSET AREA
  - URBAN EXTENSION LINE
  - NATIONAL FOREST BOUNDARY
  - RESERVATION OR PARK BOUNDARY
  - STATE FOREST BOUNDARY
  - STATE GAMLAND BOUNDARY
  - FEDERAL GAMLAND BOUNDARY
  - MILITARY RESERVATION BOUNDARY
  - STATE LINE
  - COUNTY LINE
  - CITY LIMIT
  - FERRY ROUTE
  - CANAL
  - NARROW CREEK OR STREAM
  - WIDE RIVER OR CREEK
  - RESERVOIR, POND OR LAKE W/ ISLAND
  - DAM OR DAM WITH LOCK
  - WATERFALL
  - SWAMP
  - COMMUNITY, TOWN OR CITY CENTER
  - COUNTY SEAT
  - STATE CAPITAL
  - SCHOOL
  - COLLEGE OR UNIVERSITY
  - HOSPITAL
  - COAST GUARD STATION
  - CHURCH
  - CHURCH WITH CEMETERY
  - CEMETERY
  - PARK STATION
  - CORRECTION OR PENAL INSTITUTION
  - QUARRY
  - MINE OR PIT
  - HIGHWAY GARAGE OR MAINT. YARD
  - HIGHWAY DIV. OR DIST. OFFICE
  - POST OFFICE
  - MILITARY POST
  - WILDLIFE REFUGE
  - WEIGH STATION
  - FAIRGROUNDS
  - HISTORICAL SITE
  - POINTS OF INTEREST
  - STATE FOREST
  - LIGHTHOUSE
  - MOUNTAIN GAP
  - MOUNTAIN SUMMIT
  - OVERLOOK
  - GEODETIC MARKER
  - REST AREA
  - VISITOR CTR/REST AREA
  - WELCOME CTR/REST AREA
  - MAJOR AIRPORT
  - AIRPORT
  - MILITARY AIRPORT
  - HELIPORT

**2013 AADT**  
 ANNUAL AVERAGE DAILY TRAFFIC  
 GENERATED BY THE  
**TRAFFIC SURVEY GROUP**  
 TRANSPORTATION PLANNING BRANCH  
**McDOWELL COUNTY**  
 NORTH CAROLINA

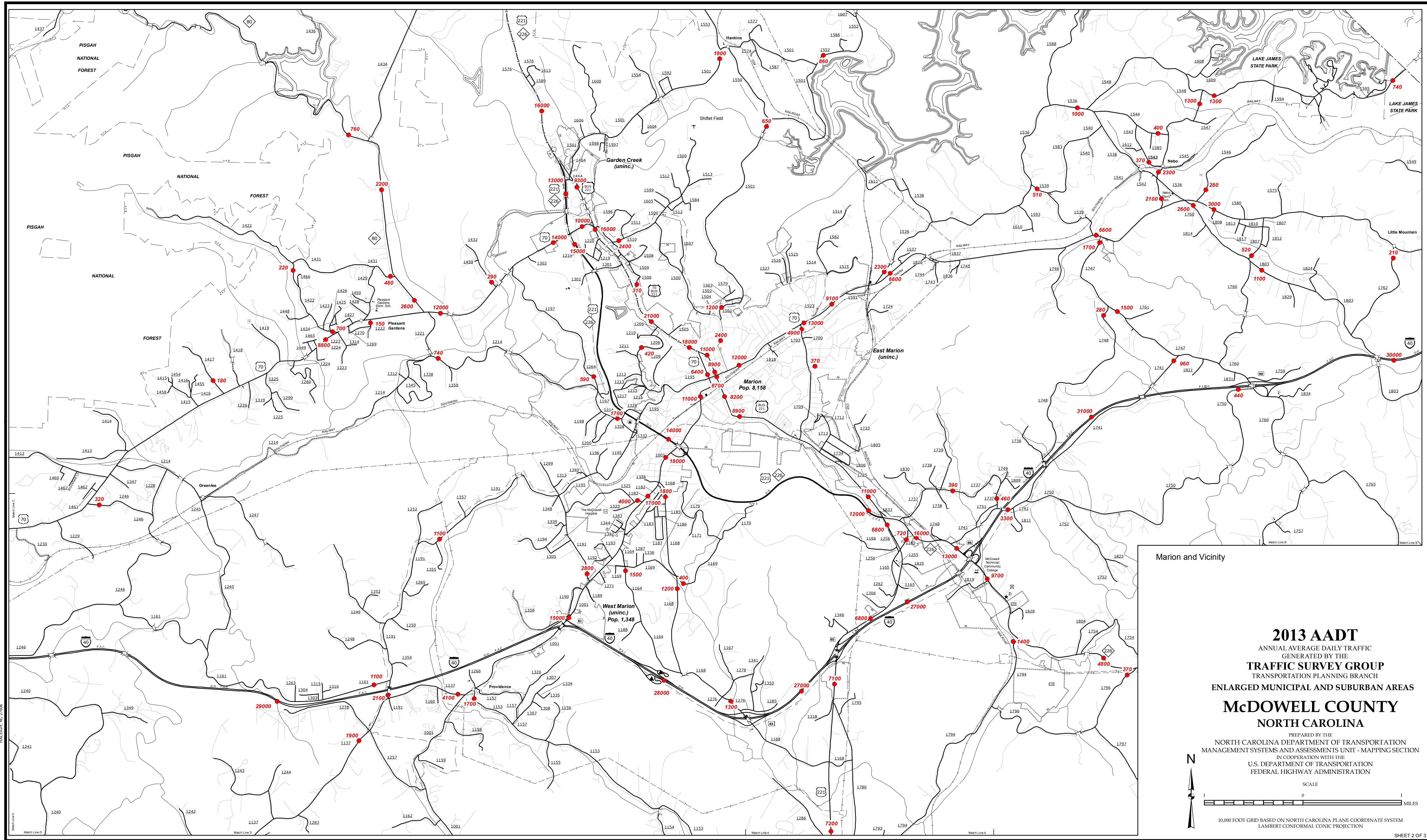
PREPARED BY THE  
 NORTH CAROLINA DEPARTMENT OF TRANSPORTATION  
 MANAGEMENT SYSTEMS AND ASSESSMENTS UNIT - MAPPING SECTION  
 IN COOPERATION WITH THE  
 U.S. DEPARTMENT OF TRANSPORTATION  
 FEDERAL HIGHWAY ADMINISTRATION



SCALE FOR ENLARGEMENTS

10,000 FOOT GRID BASED ON NORTH CAROLINA PLANE COORDINATE SYSTEM  
 LAMBERT CONFORMAL CONIC PROJECTION

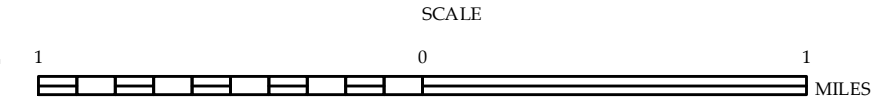
COPIES OF THIS MAP ARE AVAILABLE  
 AT THE FOLLOWING ADDRESS:  
 N.C. DEPARTMENT OF TRANSPORTATION  
 MSAU - MAPPING SECTION  
 RALEIGH, NC 27606



Marion and Vicinity

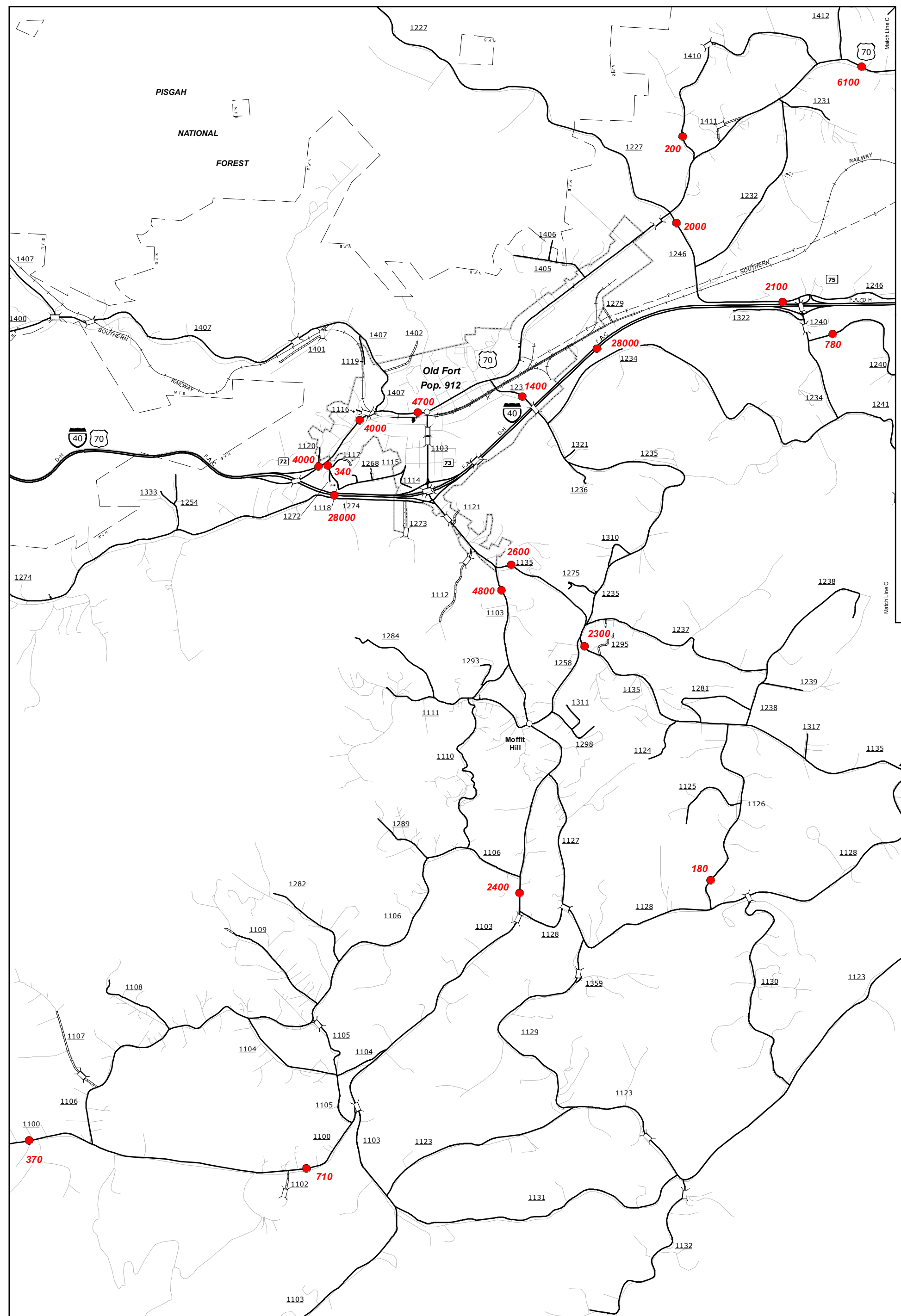
**2013 AADT**  
 ANNUAL AVERAGE DAILY TRAFFIC  
 GENERATED BY THE  
**TRAFFIC SURVEY GROUP**  
 TRANSPORTATION PLANNING BRANCH  
 ENLARGED MUNICIPAL AND SUBURBAN AREAS  
**McDOWELL COUNTY**  
 NORTH CAROLINA

PREPARED BY THE  
 NORTH CAROLINA DEPARTMENT OF TRANSPORTATION  
 MANAGEMENT SYSTEMS AND ASSESSMENTS UNIT - MAPPING SECTION  
 IN COOPERATION WITH THE  
 U.S. DEPARTMENT OF TRANSPORTATION  
 FEDERAL HIGHWAY ADMINISTRATION

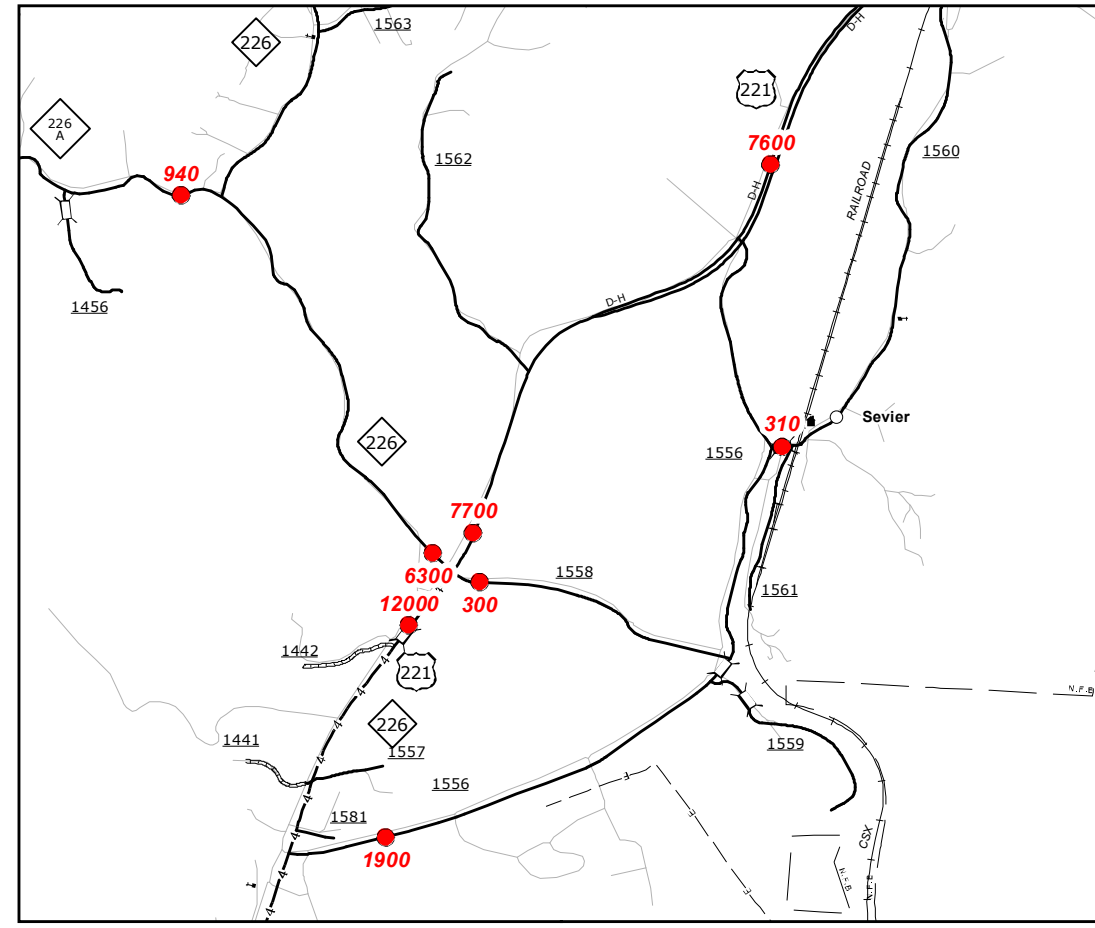


10,000 FOOT GRID BASED ON NORTH CAROLINA PLANE COORDINATE SYSTEM  
 LAMBERT CONFORMAL CONIC PROJECTION

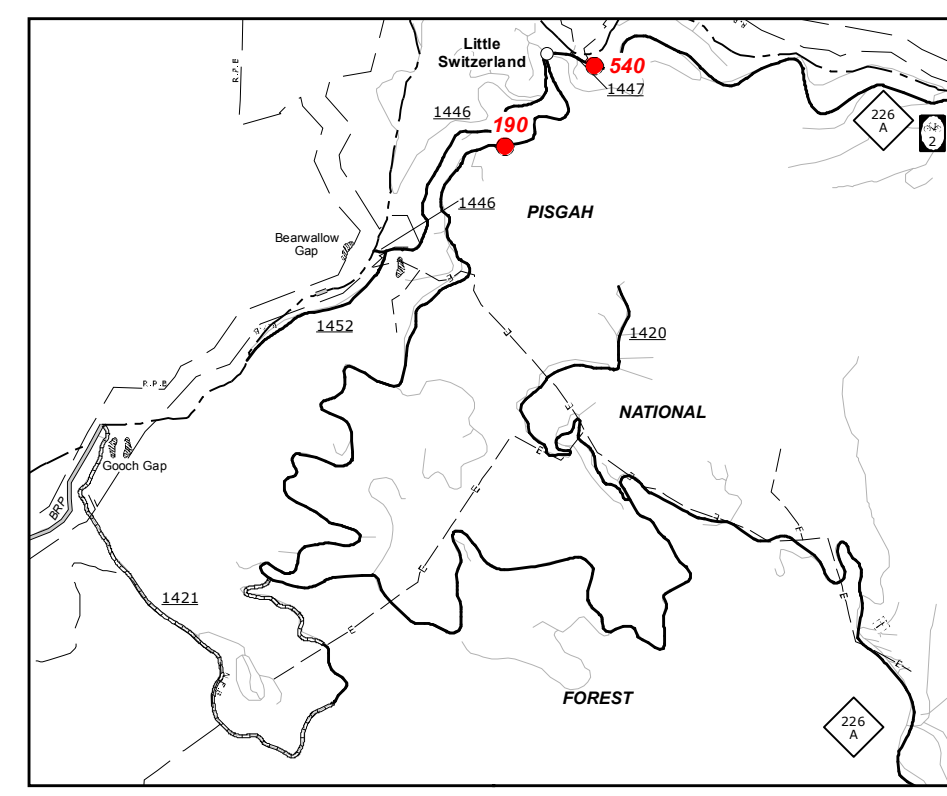
COPIES OF THIS MAP ARE AVAILABLE  
 AT THE FOLLOWING ADDRESS:  
 N.C. DEPARTMENT OF TRANSPORTATION  
 MSAU - MAPPING SECTION  
 100 SOUTH MAIN STREET  
 RALEIGH, NC 27606



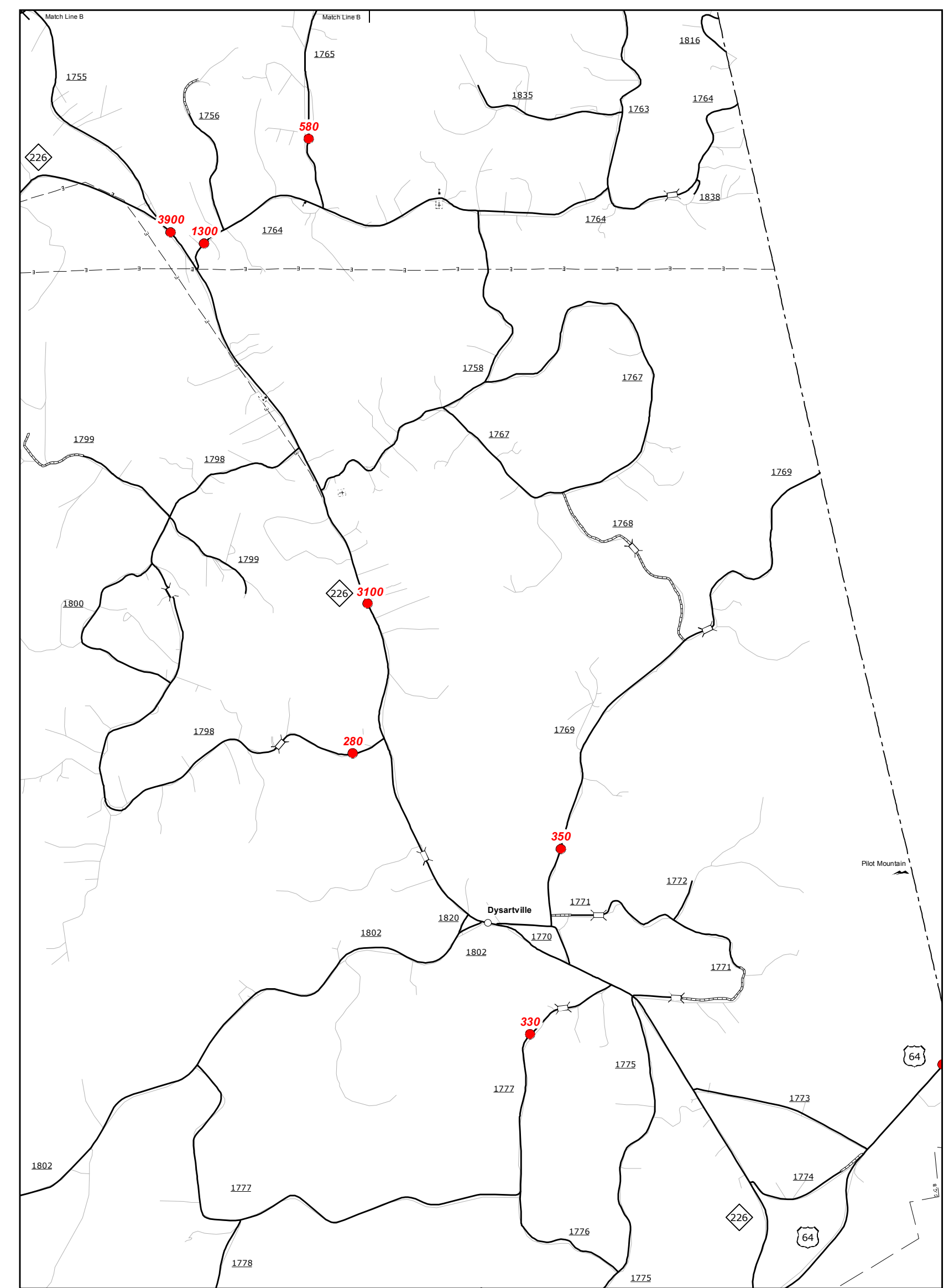
Old Fort and Vicinity



Sevier

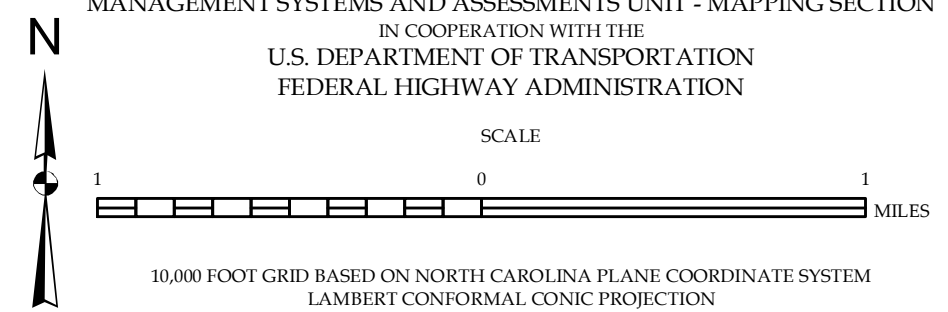


Little Switzerland



Dysartville and Vicinity **2013 AADT**  
 ANNUAL AVERAGE DAILY TRAFFIC  
 GENERATED BY THE  
**TRAFFIC SURVEY GROUP**  
 TRANSPORTATION PLANNING BRANCH  
 ENLARGED MUNICIPAL AND SUBURBAN AREAS  
**McDOWELL COUNTY**  
 NORTH CAROLINA

PREPARED BY THE  
 NORTH CAROLINA DEPARTMENT OF TRANSPORTATION  
 MANAGEMENT SYSTEMS AND ASSESSMENTS UNIT - MAPPING SECTION  
 IN COOPERATION WITH THE  
 U.S. DEPARTMENT OF TRANSPORTATION  
 FEDERAL HIGHWAY ADMINISTRATION



COPIES OF THIS MAP ARE AVAILABLE  
 AT THE FOLLOWING ADDRESS:  
 N.C. DEPARTMENT OF TRANSPORTATION  
 MS&AU - MAPPING SECTION  
 4001 SOUTH PARKWAY  
 RALEIGH, NC 27606