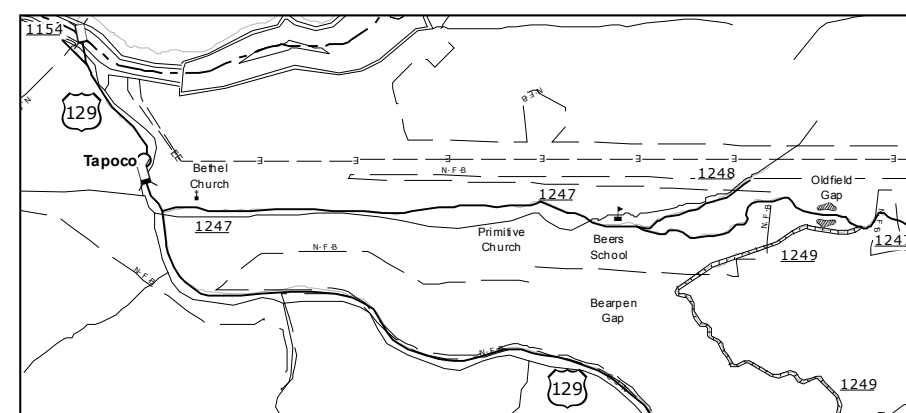
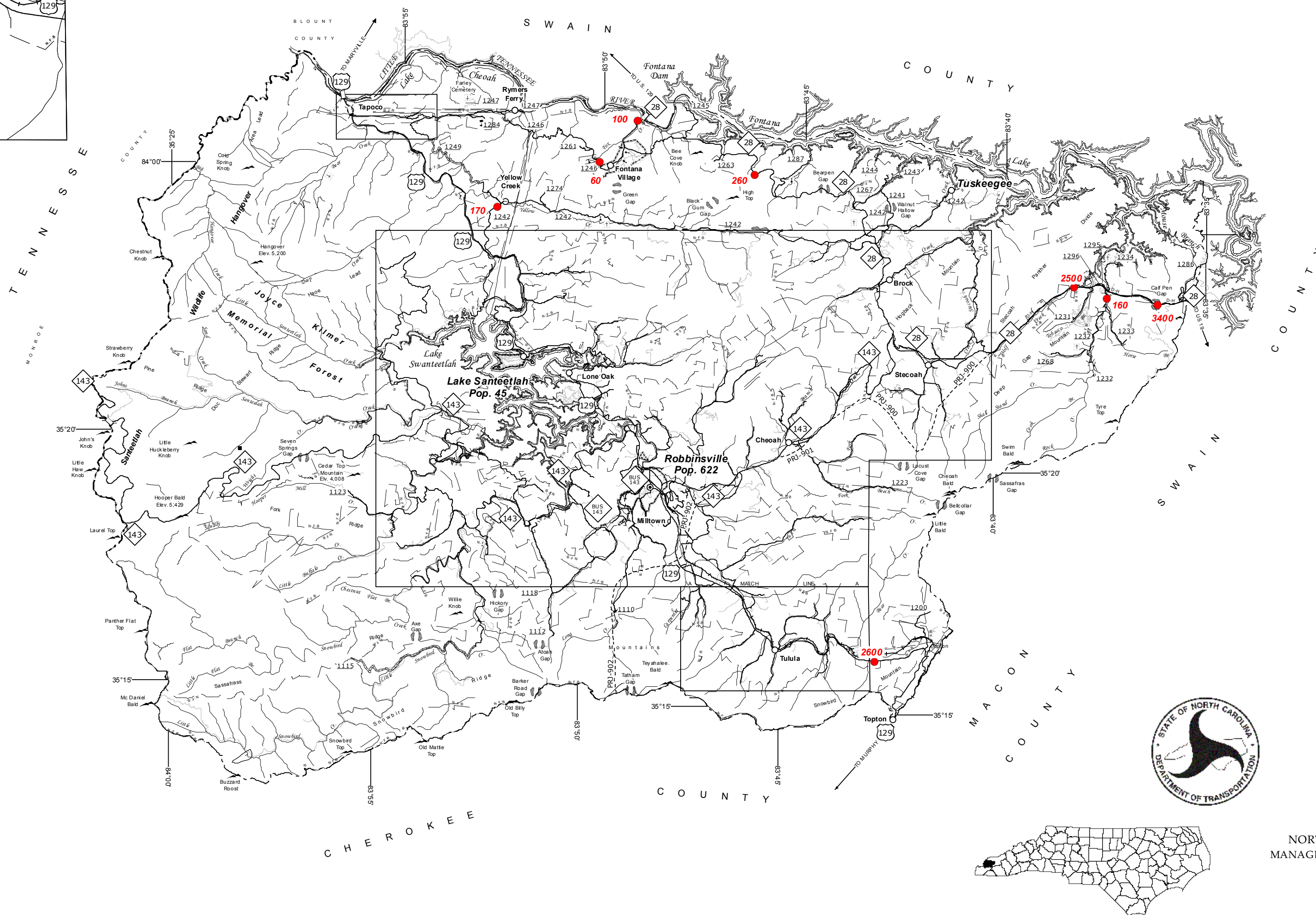
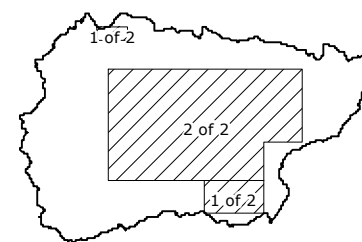
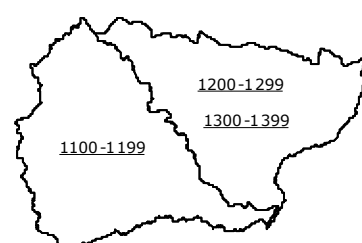


### Tulula Vicinity



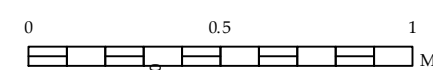
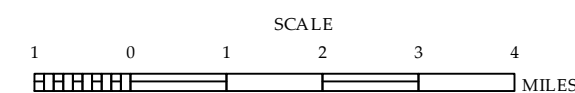
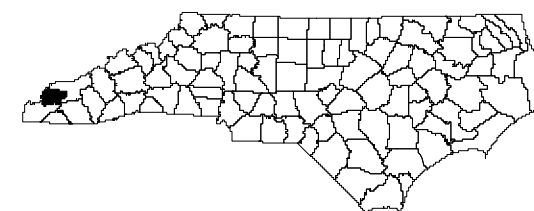
### Tapoco Vicinity



- | LEGEND |                                  |
|--------|----------------------------------|
|        | UNPAVED SURACED ROAD             |
|        | HARD SURACED ROAD                |
|        | DIVIDED HIGHWAY INSET            |
|        | DIVIDED HIGHWAY W/INERT          |
|        | FULL CONTROL ACCESS              |
|        | NON-SYSTEM ROADS                 |
|        | PROJECTED LOCATION               |
|        | NATIONAL PARK ROAD               |
|        | BLUE RIDGE PARKWAY               |
|        | INTERSECTION DISTANCE            |
|        | TRAFFIC CIRCLE                   |
|        | DETAILED HIGHWAY INTERCHANGE     |
|        | ROAD THROUGH MOUNTAIN PASS       |
|        | HIGHWAY BRIDGE                   |
|        | OVERPASS                         |
|        | DRAW SPAN ON BRIDGE              |
|        | FORD TUNNEL                      |
|        | INTERSTATE HIGHWAY               |
|        | U.S. NUMBERED HIGHWAY            |
|        | N.C. NUMBERED HIGHWAY            |
|        | U.S. NUMBERED BICYCLE ROUTE      |
|        | N.C. NUMBERED BICYCLE ROUTE      |
|        | SECONDARY INTERCHANGE NUMBER     |
|        | SECONDARY ROAD NUMBER            |
|        | UTILITY LINES                    |
|        | RAILROAD                         |
|        | RAILROAD STATION                 |
|        | GRADE CROSSING                   |
|        | URBAN EXTENSION LINE             |
|        | NATIONAL FOREST BOUNDARY         |
|        | RESERVATION OR PARK BOUNDARY     |
|        | STATE FOREST BOUNDARY            |
|        | STATE GAMELAND BOUNDARY          |
|        | FEDERAL GAMELAND BOUNDARY        |
|        | MILITARY RESERVATION BOUNDARY    |
|        | STATE LINE                       |
|        | COUNTY LINE                      |
|        | CITY LIMIT                       |
|        | FERRY ROUTE                      |
|        | CANAL                            |
|        | NARROW CREEK OR STREAM           |
|        | WIDE RIVER OR CREEK              |
|        | SWAMP, POND, LAKE OR WET L/AND   |
|        | DAM OR DAM WITH LOCK             |
|        | WATERFALL                        |
|        | SWAMP                            |
|        | COMMUNITY, TOWN OR CITY CENTER   |
|        | COUNTY SEAT                      |
|        | STATE CAPITAL                    |
|        | SCHOOL                           |
|        | COLLEGE OR UNIVERSITY            |
|        | HOSPITAL                         |
|        | COAST GUARD STATION              |
|        | CHURCH                           |
|        | CHURCH WITH CEMETERY             |
|        | CEMETERY                         |
|        | PATROL STATION                   |
|        | CORRECTION OR PENAL INSTITUTION  |
|        | QUARRY                           |
|        | MINE OR PIT                      |
|        | HIGHWAY GARAGE OR MAINT. YARD    |
|        | POST OFFICE DIV. OR DIST. OFFICE |
|        | MILITARY POST                    |
|        | WILDLIFE REFUGE                  |
|        | WEIGH STATION                    |
|        | FAIRGROUNDS                      |
|        | HISTORICAL SITE                  |
|        | POINTS OF INTEREST               |
|        | STATE FOREST                     |
|        | LIGHTHOUSE                       |
|        | MOUNTAIN GAP                     |
|        | MOUNTAIN SUMMIT                  |
|        | OVERLOOK                         |
|        | GEODETIC MARKER                  |
|        | REST AREA                        |
|        | VISITOR CTR./REST AREA           |
|        | WELCOME CTR./REST AREA           |
|        | MAJOR AIRPORT                    |
|        | AIRPORT                          |
|        | MILITARY AIRPORT                 |
|        | HELIPROT                         |

**2013 AADT**  
ANNUAL AVERAGE DAILY TRAFFIC  
GENERATED BY THE  
**TRAFFIC SURVEY GROUP**  
TRANSPORTATION PLANNING BRANCH  
**GRAHAM COUNTY**  
**NORTH CAROLINA**

PREPARED BY THE  
NORTH CAROLINA DEPARTMENT OF TRANSPORTATION  
MANAGEMENT SYSTEM AND ASSESSMENT UNIT - MAPPING SECTION  
IN COOPERATION WITH THE  
U.S. DEPARTMENT OF TRANSPORTATION  
FEDERAL HIGHWAY ADMINISTRATION



SCALE FOR ENLARGEMENTS

10,000 FOOT GRID BASED ON NORTH CAROLINA PLANE COORDINATE SYSTEM  
LAMBERT CONFORMAL CONIC PROJECTION



COPIES OF THIS MAP ARE AVAILABLE  
FOR PURCHASE AT A NOMINAL COST.  
N.C. DEPARTMENT OF TRANSPORTATION  
MS&U - MAPPING SECTION  
RALEIGH, NC 27601  
800-441-2906

