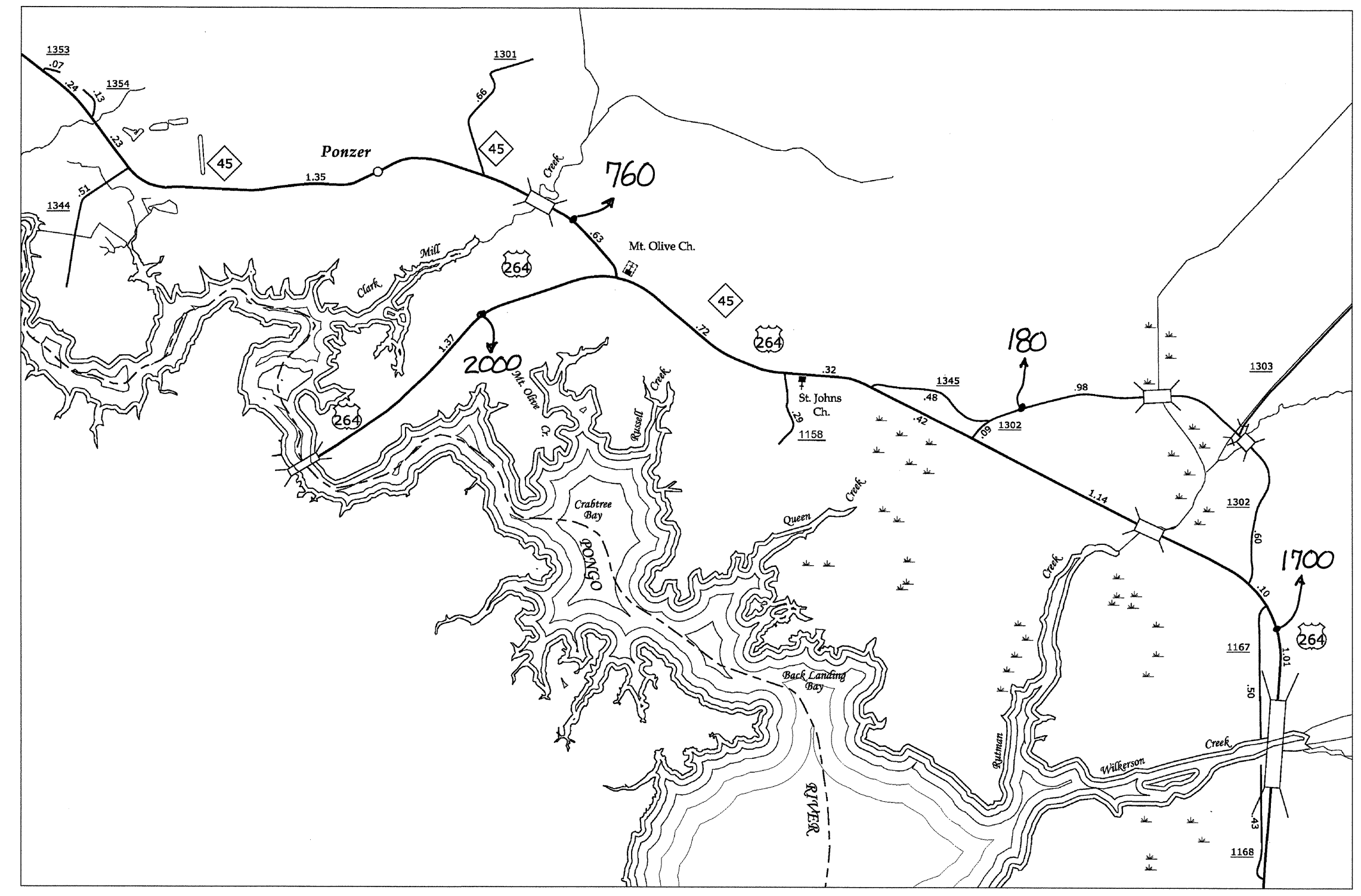
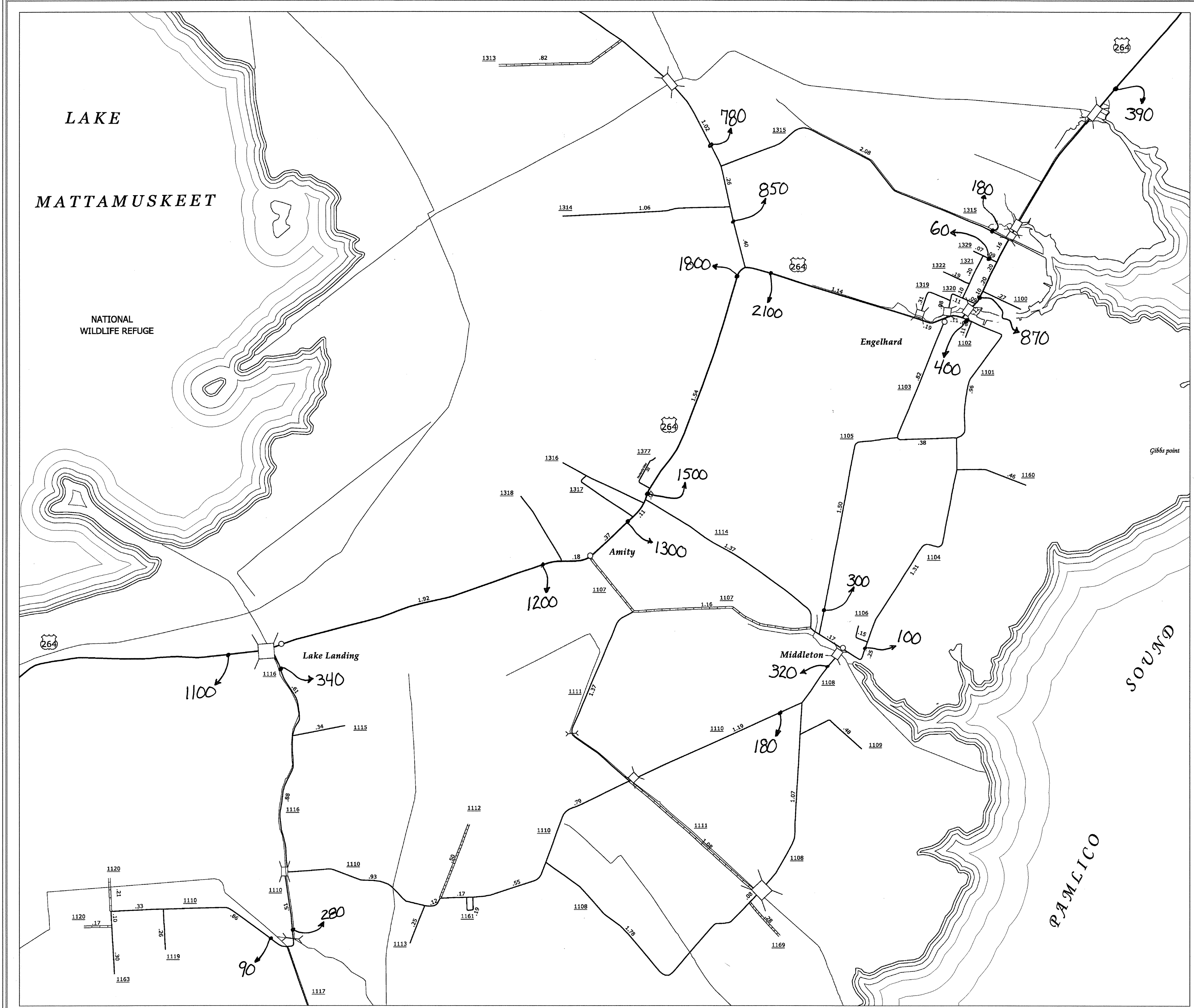
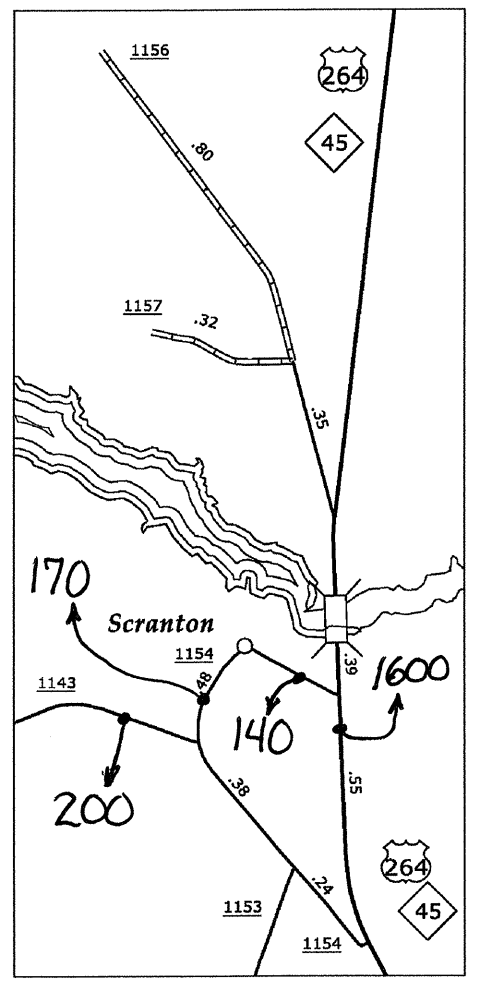


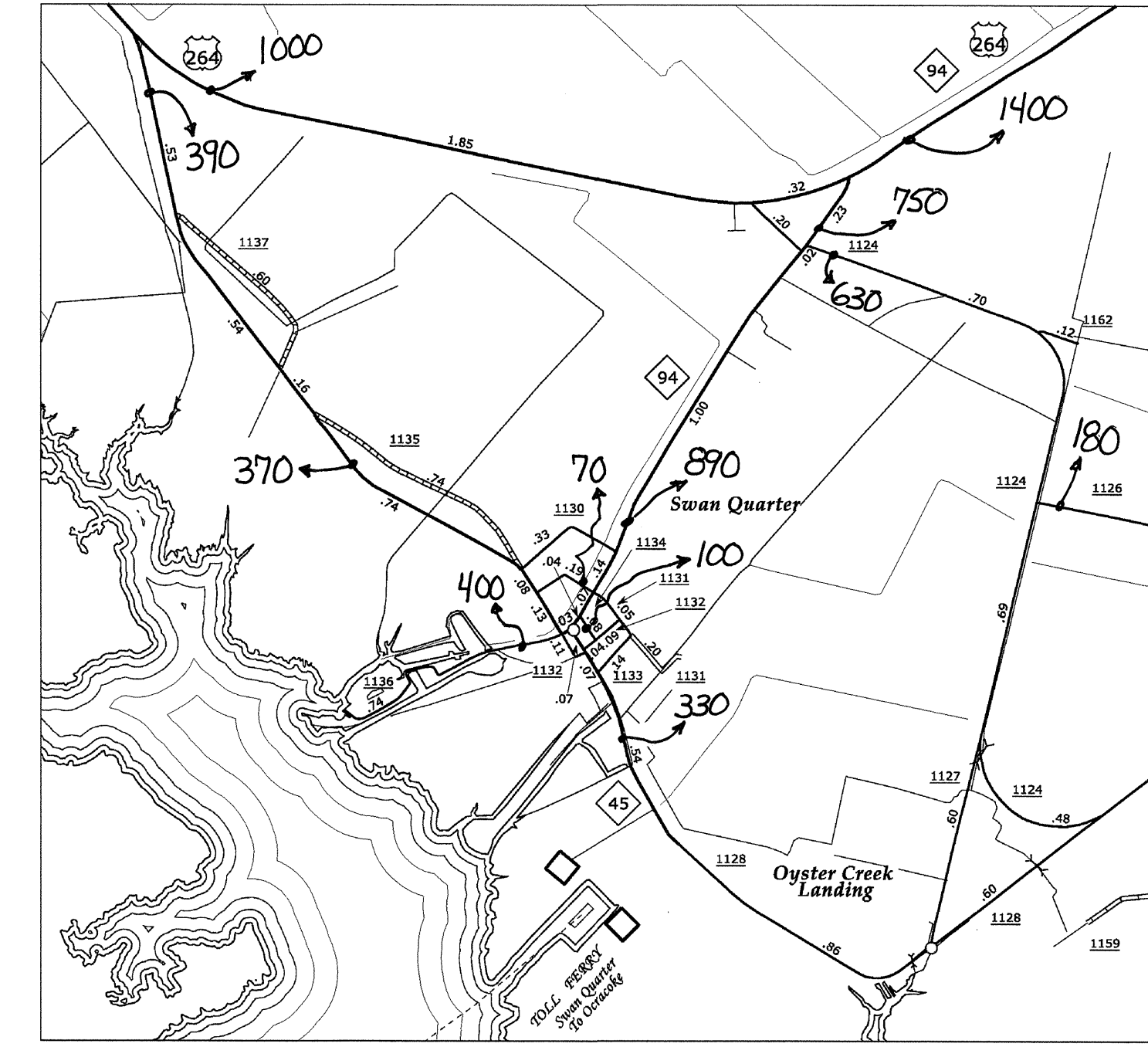
Disclaimer: The SSMU's goal is to provide the most accurate information as possible. The magnitude of the data prevents any guarantee of accuracy or completeness. If you find any information that is incorrect, please send your request to the SSMU Mapping Section.



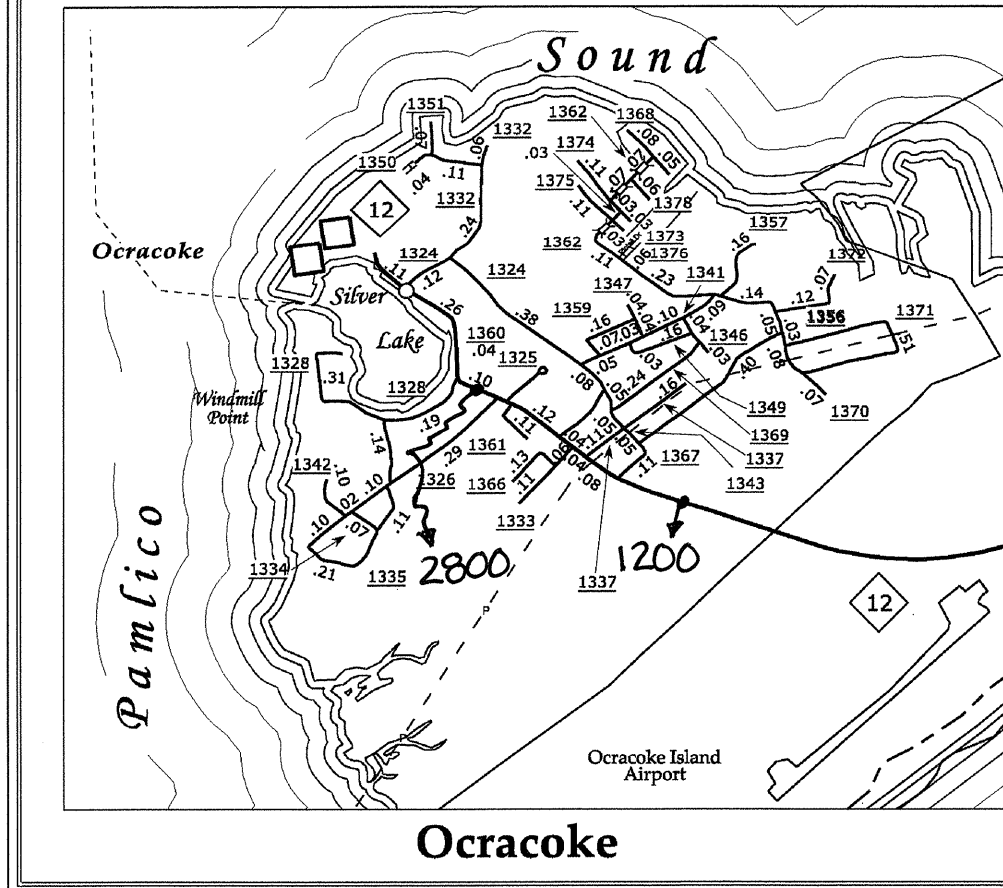
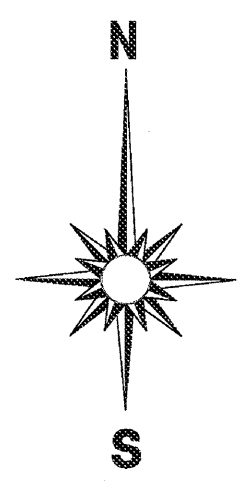
Ponzer



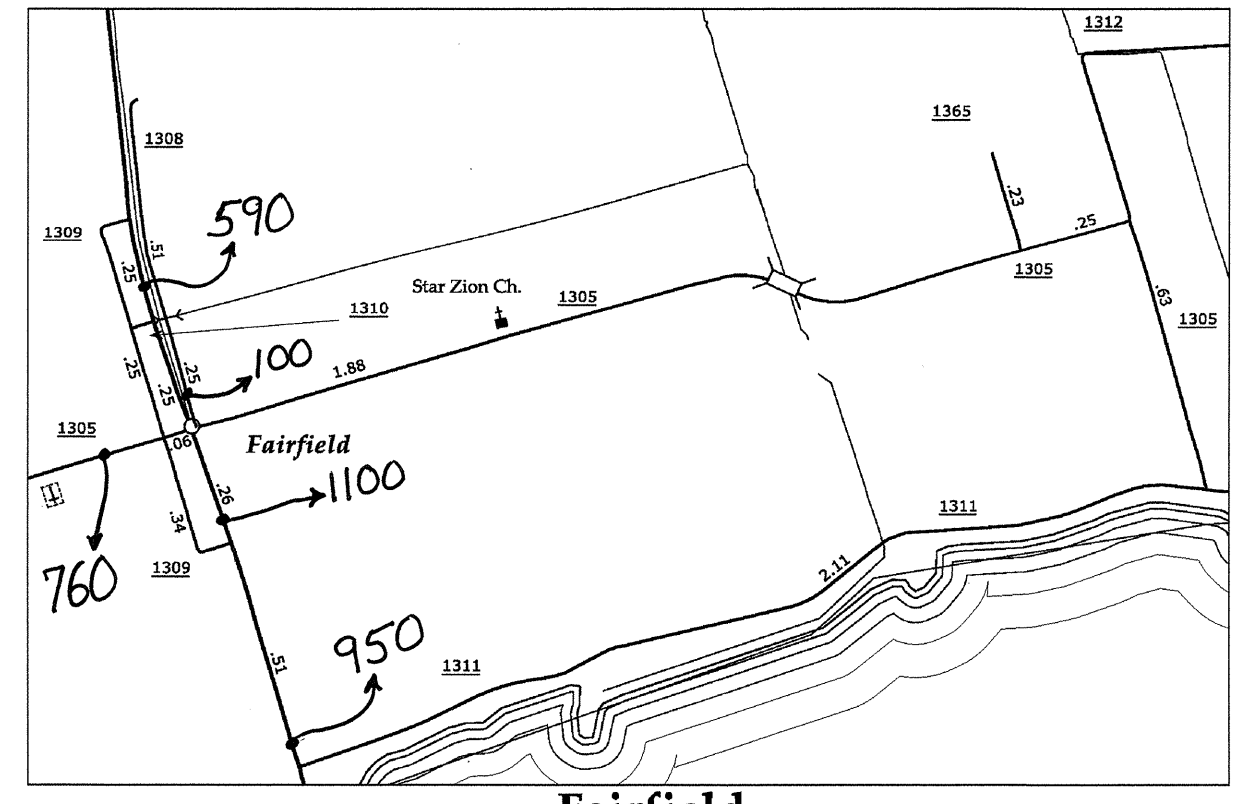
Scranton



Swan Quarter and Oyster Creek Landing

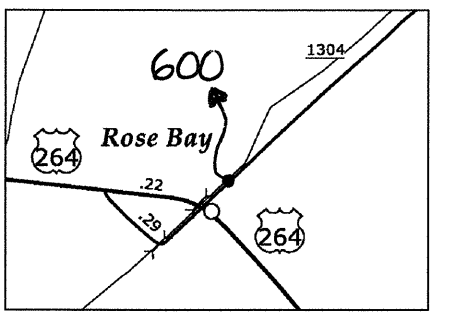


Ocracoke



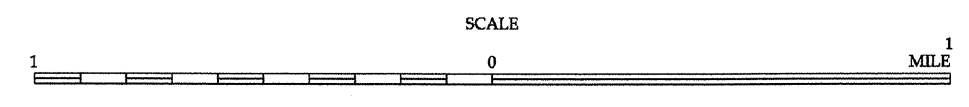
Fairfield

Lake Landing, Amity, Engelhard, and Middleton



Rose Bay

ENLARGED MUNICIPAL AND SUBURBAN AREAS  
**HYDE COUNTY**  
 NORTH CAROLINA  
 PREPARED BY THE  
 NORTH CAROLINA DEPARTMENT OF TRANSPORTATION  
 STATE ROAD MAINTENANCE UNIT - MAPPING SECTION  
 IN COOPERATION WITH THE  
 U.S. DEPARTMENT OF TRANSPORTATION  
 FEDERAL HIGHWAY ADMINISTRATION



**2012 AADT**  
 ANNUAL AVERAGE DAILY TRAFFIC  
 HYDE COUNTY  
 GENERATED BY THE  
**TRAFFIC SURVEY GROUP**  
 TRANSPORTATION PLANNING BRANCH

10,000 FOOT GRID BASED ON NORTH CAROLINA STATE PLANE COORDINATE SYSTEM  
 NAD 83 FEET  
 LAMBERT CONFORMAL CONIC