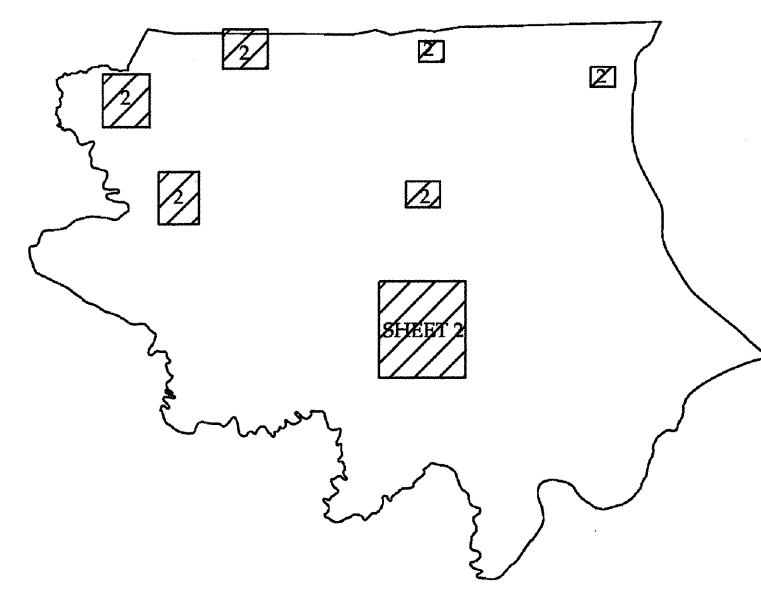


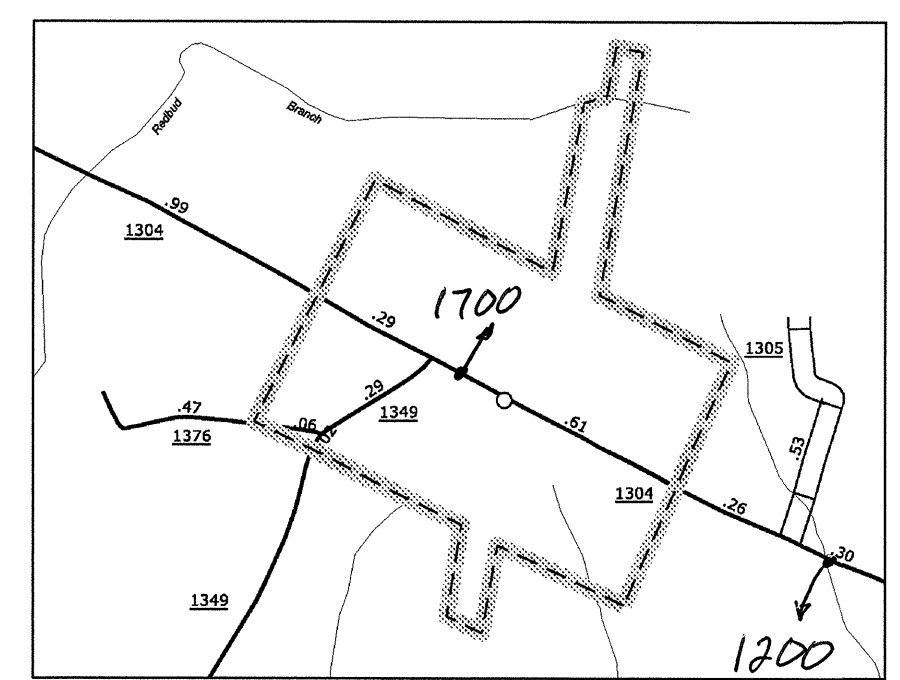
Disclaimer: The SRMU's goal is to provide the most accurate information as possible. The magnitude of the data prevents any guarantee of accuracy or completeness. If you find any information that is incorrect, please send your request to the SRMU section.



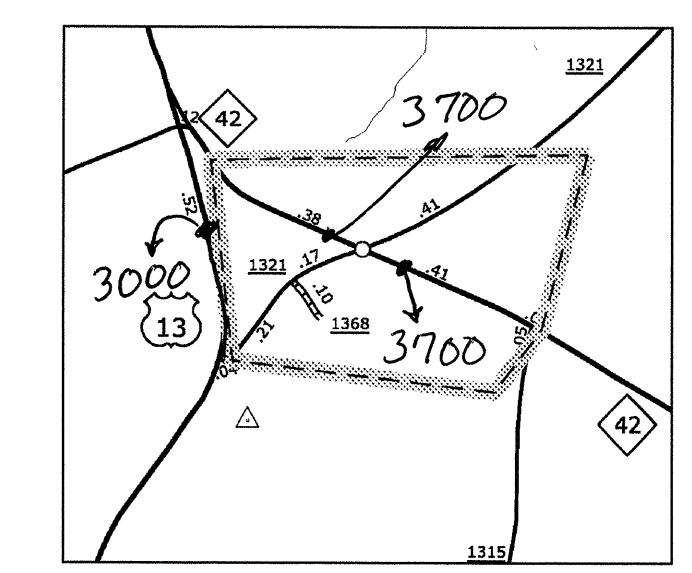
SUPPLEMENT SHEET KEY



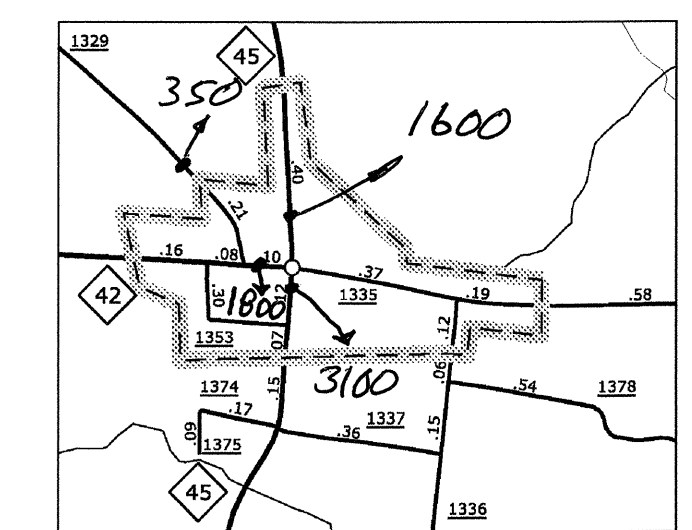
WINDSOR



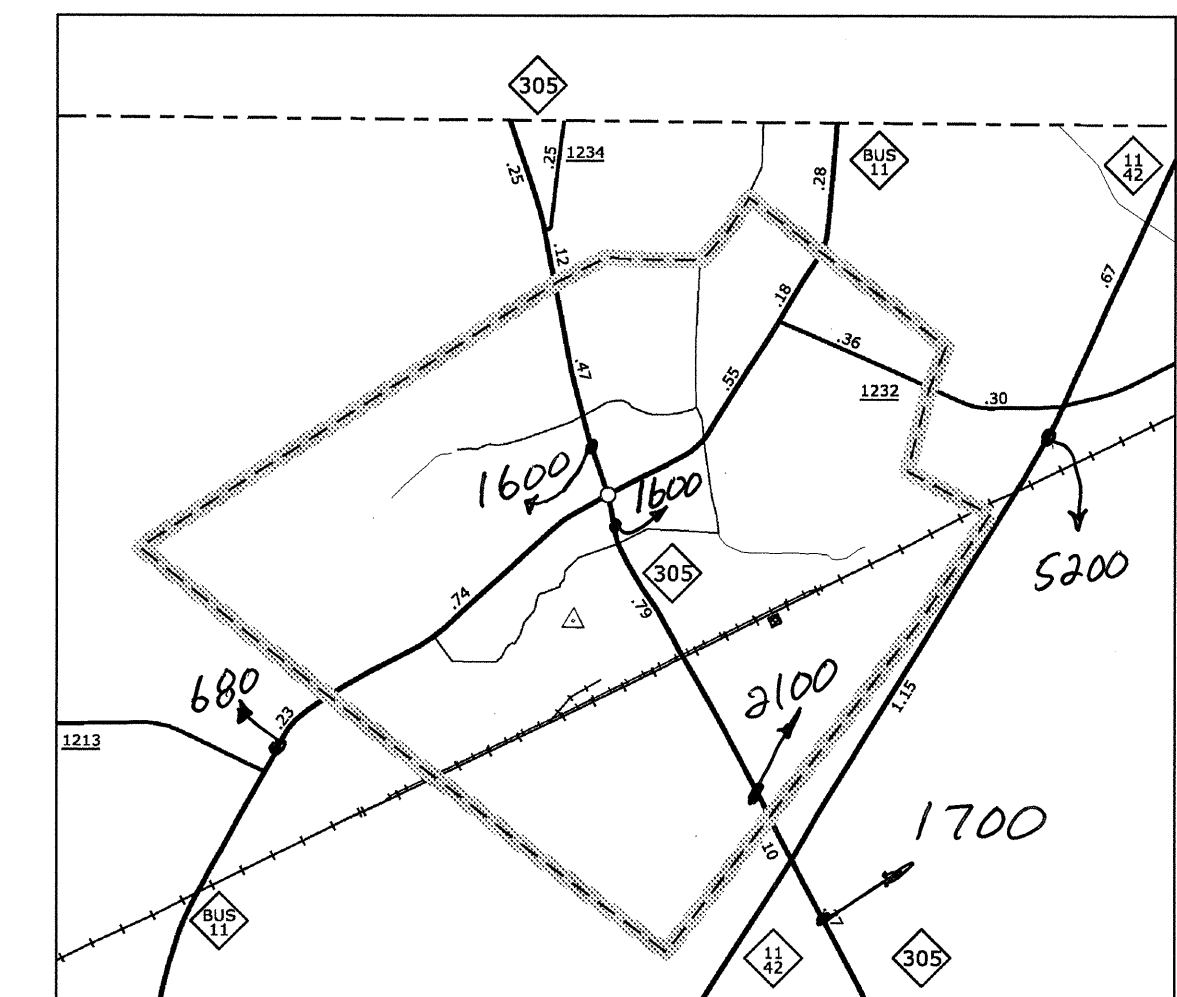
Askewville
Pop. 177



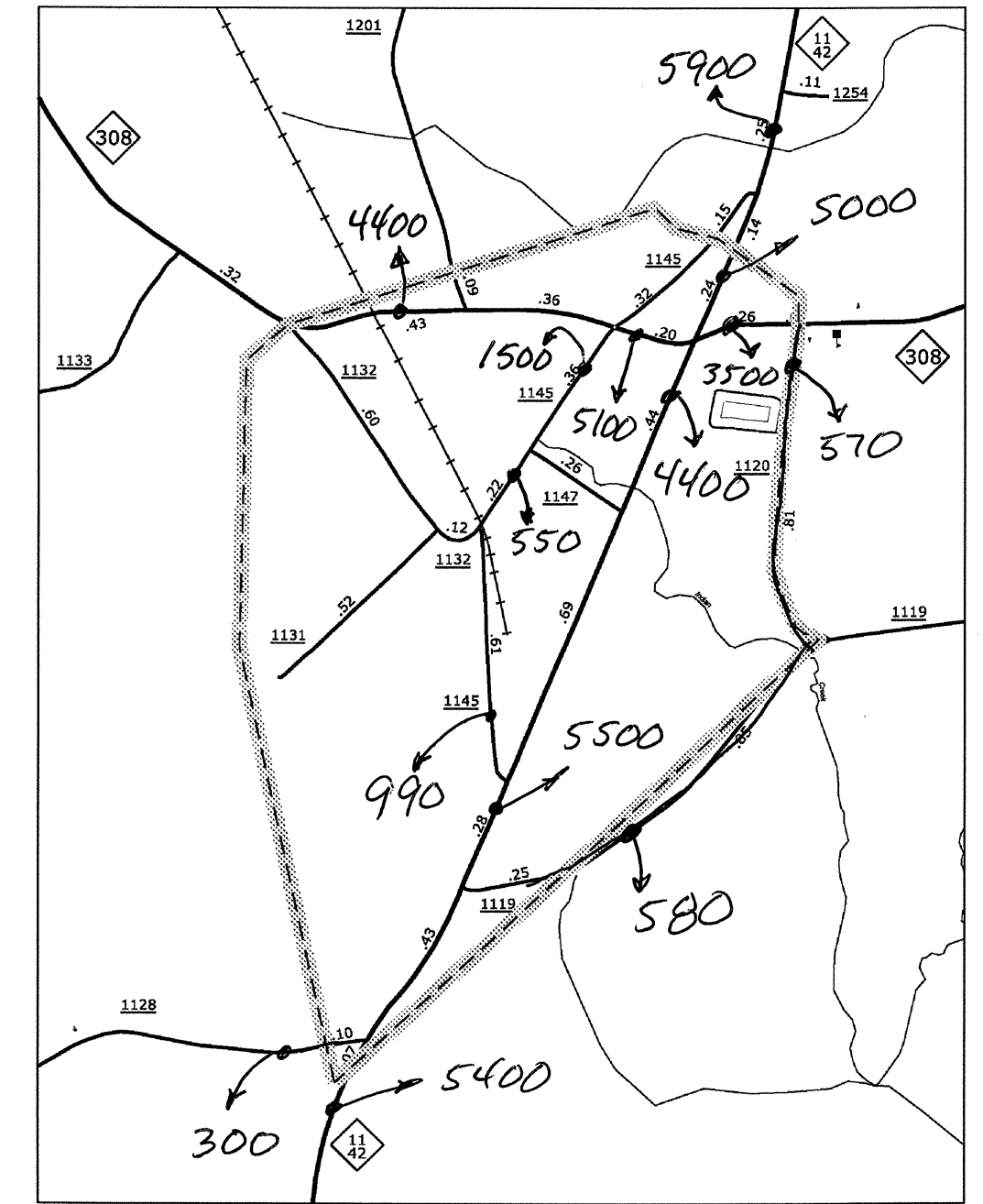
Powellville
POP. 259



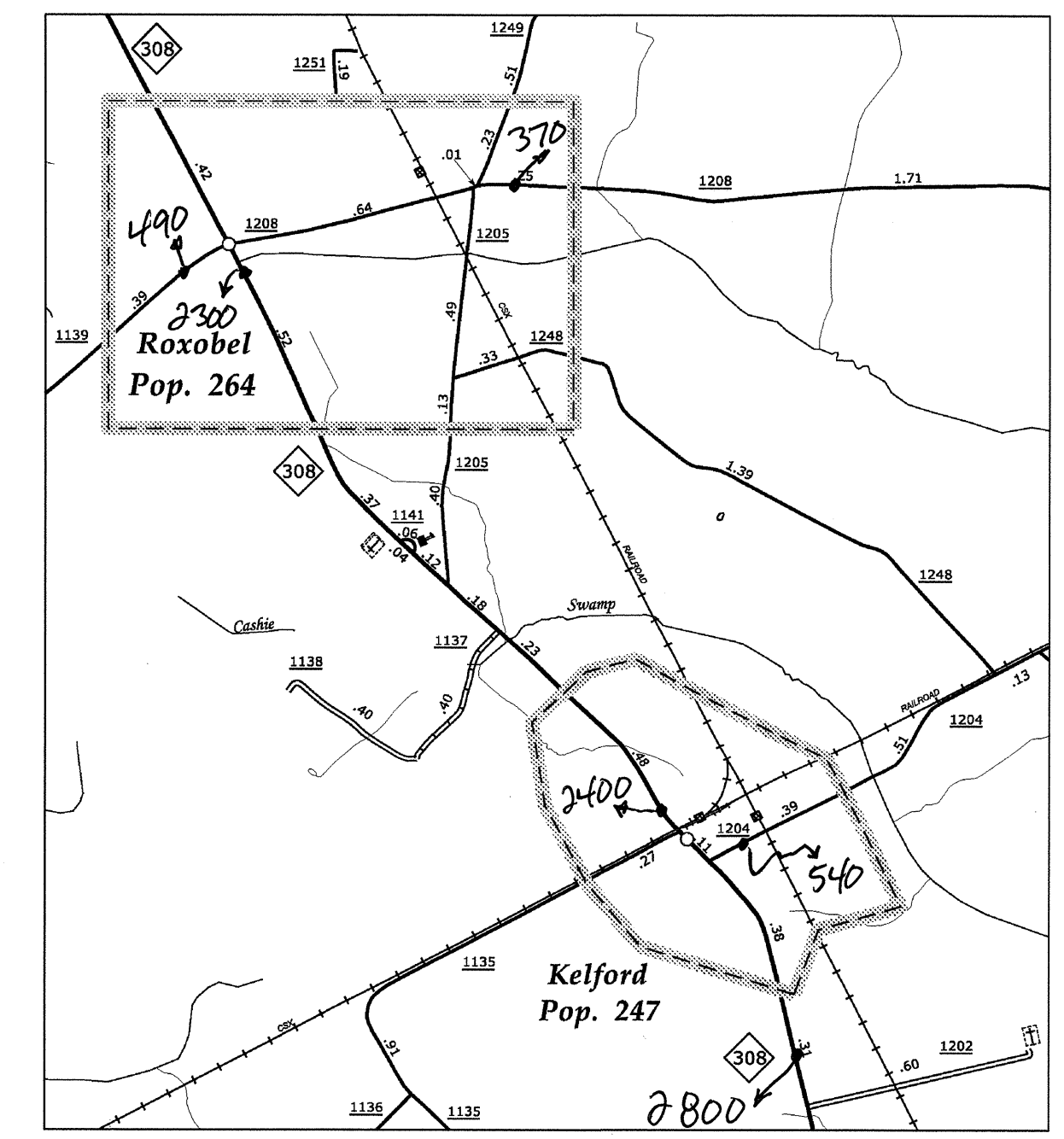
Colrain
Pop. 220



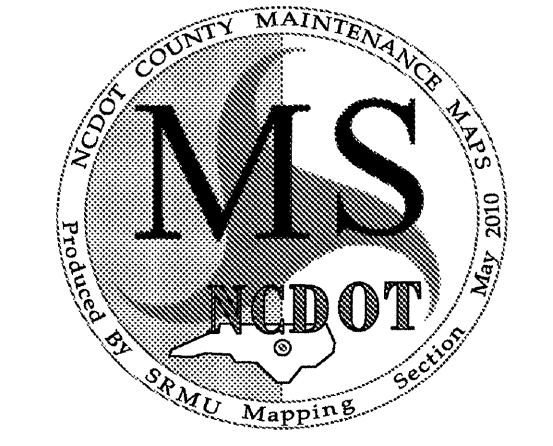
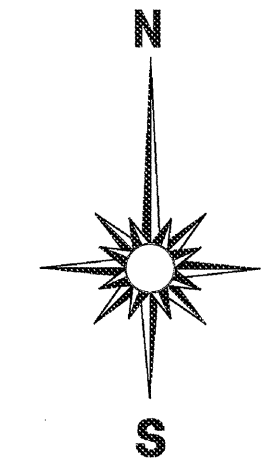
Aulander



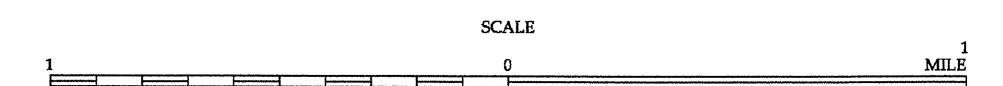
Lewiston Woodville
Pop. 606



Roxobel and Kelford
Roxobel Pop. 264
Kelford Pop. 247



ENLARGED MUNICIPAL AND SUBURBAN AREAS
BERTIE COUNTY
 NORTH CAROLINA
 PREPARED BY THE
 NORTH CAROLINA DEPARTMENT OF TRANSPORTATION
 STATE ROAD MAINTENANCE UNIT - MAPPING SECTION
 IN COOPERATION WITH THE
 U.S. DEPARTMENT OF TRANSPORTATION
 FEDERAL HIGHWAY ADMINISTRATION



10,000 FOOT GRID BASED ON NORTH CAROLINA PLANE COORDINATE SYSTEM
 POLYCONIC PROJECTION

REVISIONS
 SUP 1

2012 AADT
 ANNUAL AVERAGE DAILY TRAFFIC
 BERTIE COUNTY
 GENERATED BY THE
TRAFFIC SURVEY GROUP
 TRANSPORTATION PLANNING BRANCH