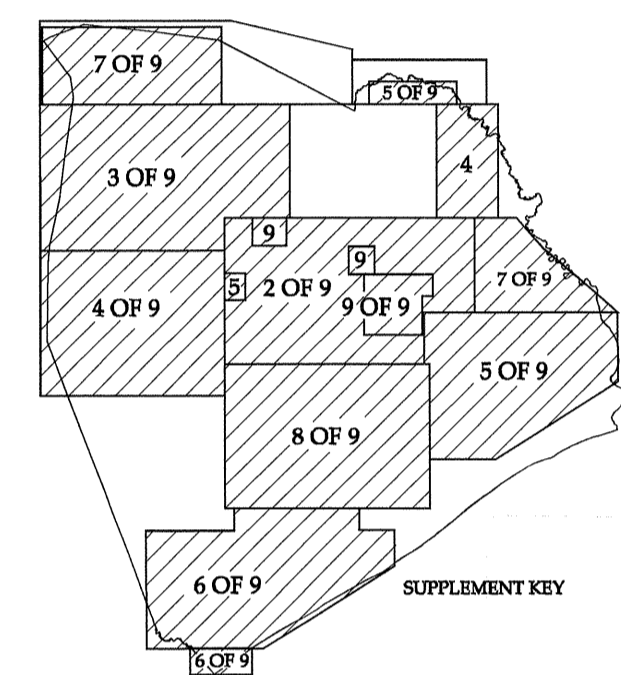
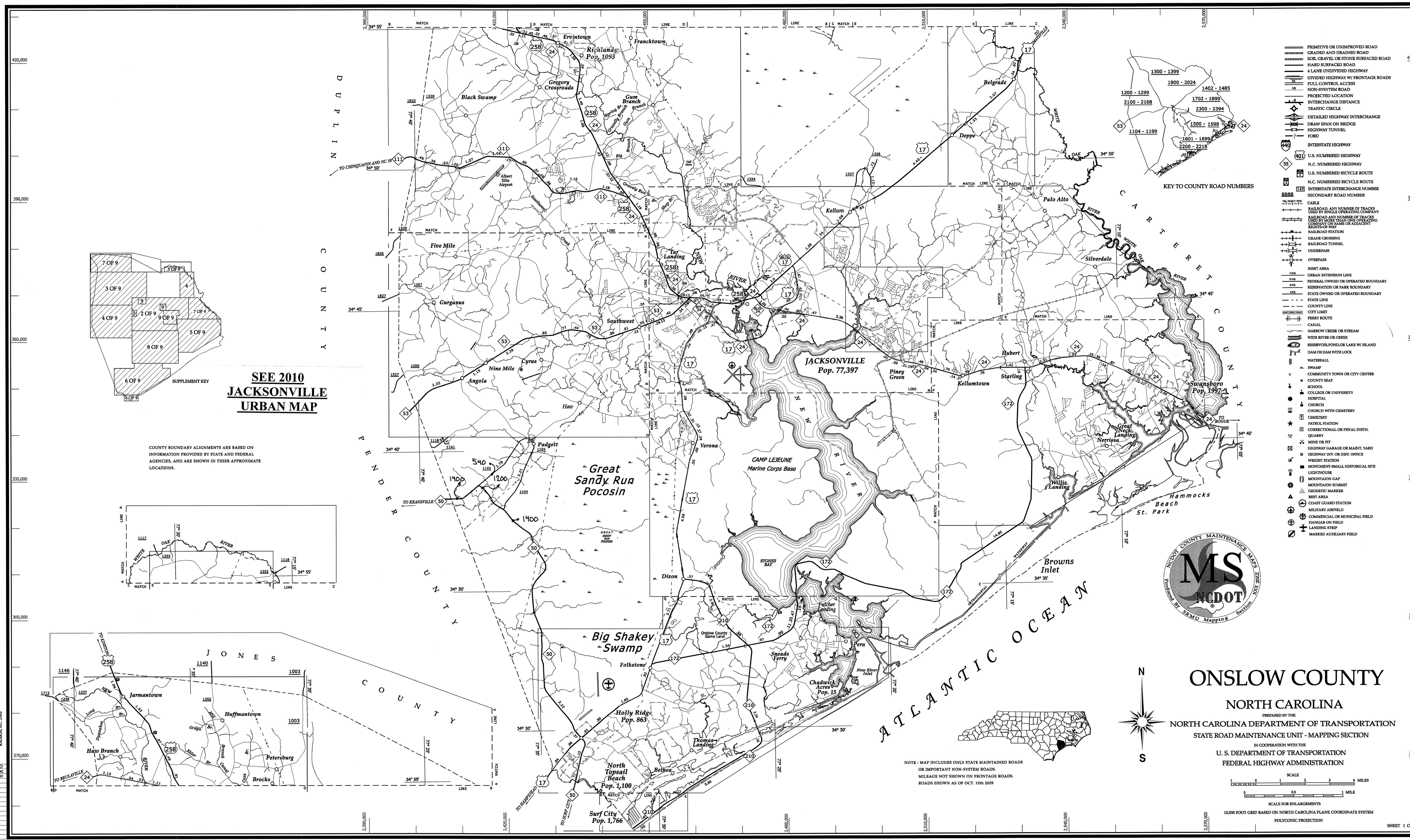
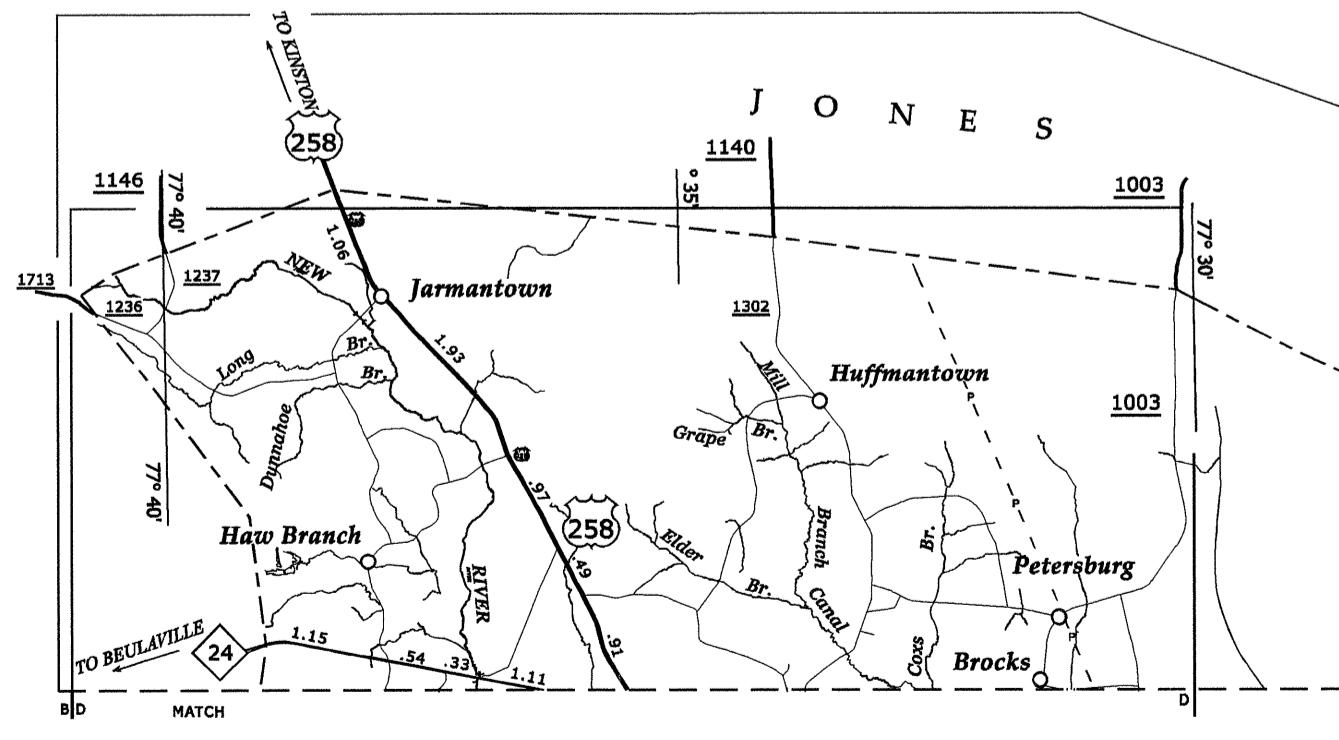
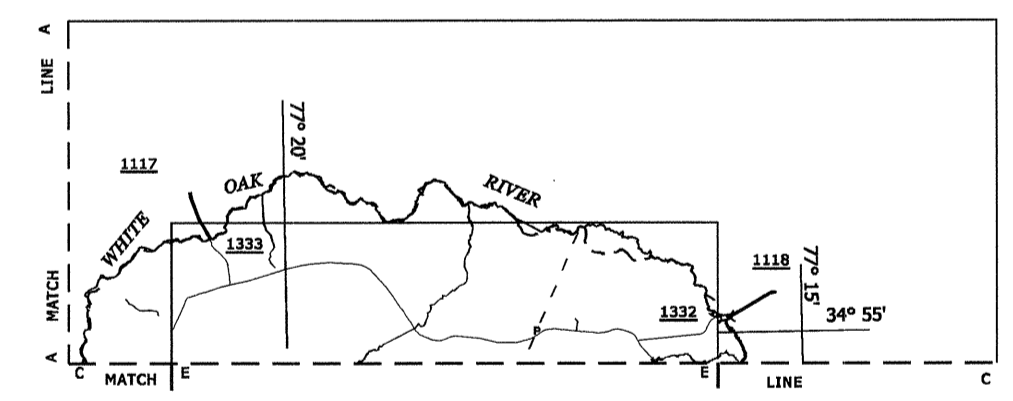


Disclaimer: The goal is to provide the most accurate information as possible. The magnitude of the data prevents any guarantee of accuracy or completeness. If you find any information that is incorrect, please send your request to the data section.

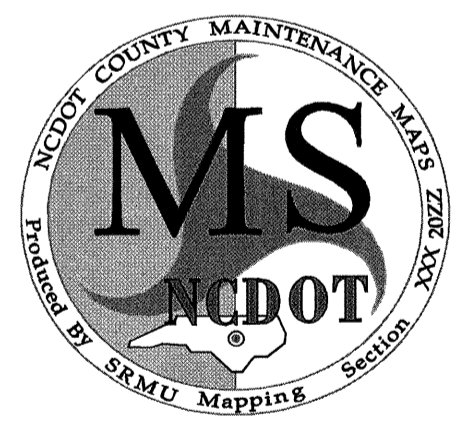


SEE 2010 JACKSONVILLE URBAN MAP

COUNTY BOUNDARY ALIGNMENTS ARE BASED ON INFORMATION PROVIDED BY STATE AND FEDERAL AGENCIES, AND ARE SHOWN IN THEIR APPROXIMATE LOCATIONS.



- KEY TO COUNTY ROAD NUMBERS**
- PRIMITIVE OR UNIMPROVED ROAD
 - GRADED AND DRAINED ROAD
 - HAZD SURFACED ROAD
 - 4 LANE UNDIVIDED HIGHWAY
 - DIVIDED HIGHWAY W/ FRONTAGE ROADS
 - FULL CONTROL ACCESS
 - NON-SYSTEM ROAD
 - PROJECTED LOCATION
 - INTERCHANGE DISTANCE
 - TRAFFIC CIRCLE
 - DETAILED HIGHWAY INTERCHANGE
 - DRAW SPAN ON BRIDGE
 - HIGHWAY TUNNEL
 - FORD
 - INTERSTATE HIGHWAY
 - U.S. NUMBERED HIGHWAY
 - N.C. NUMBERED HIGHWAY
 - U.S. NUMBERED BICYCLE ROUTE
 - N.C. NUMBERED BICYCLE ROUTE
 - INTERSTATE INTERCHANGE NUMBER
 - SECONDARY ROAD NUMBER
 - CABLE
 - RAILROAD ANY NUMBER OF TRACKS USED BY SINGLE OPERATING COMPANY
 - RAILROAD ANY NUMBER OF TRACKS USED BY SEVERAL OPERATING COMPANIES
 - RIGHTS-OF-WAY
 - RAILROAD STATION
 - GRADE CROSSING
 - RAILROAD TUNNEL
 - UNDERPASS
 - OVERPASS
 - INSET AREA
 - URBAN EXTENSION LINE
 - FEDERAL OWNED OR OPERATED BOUNDARY
 - RESERVATION OR PARK BOUNDARY
 - STATE OWNED OR OPERATED BOUNDARY
 - STATE LINE
 - COUNTY LINE
 - CITY LIMIT
 - FERRY ROUTE
 - CANAL
 - NARROW CREEK OR STREAM
 - WIDE RIVER OR CREEK
 - RESERVOIR, POND, OR LAKE W/ ISLAND
 - DAM OR DAM WITH LOCK
 - WATERFALL
 - SWAMP
 - COMMUNITY TOWN OR CITY CENTER
 - COUNTY SEAT
 - SCHOOL
 - COLLEGE OR UNIVERSITY
 - HOSPITAL
 - CHURCH
 - CHURCH WITH CEMETERY
 - CEMETERY
 - PATROL STATION
 - CORRECTIONAL OR PENAL INSTN.
 - GRABBY
 - MINE OR PIT
 - HIGHWAY GARAGE OR MAINT. YARD
 - HIGHWAY DIV. OR DIST. OFFICE
 - WEIGHT STATION
 - MONUMENT-SMALL HISTORICAL SITE
 - LIGHTHOUSE
 - MOUNTAIN GAP
 - MOUNTAIN SUMMIT
 - GEODETIC MARKER
 - REST AREA
 - COAST GUARD STATION
 - MILITARY AIRFIELD
 - COMMERCIAL OR MUNICIPAL FIELD
 - HANGAR ON FIELD
 - LANDING STRIP
 - MARKED AUXILIARY FIELD

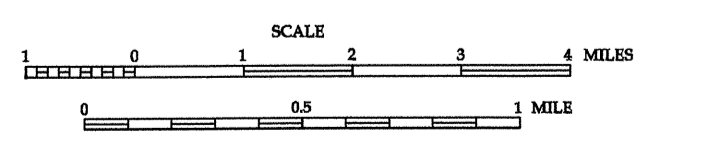
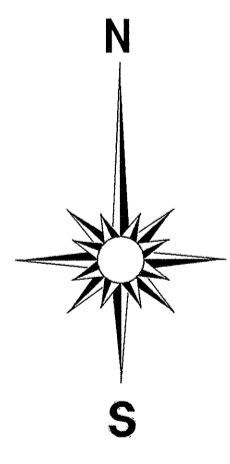


ONSLOW COUNTY

NORTH CAROLINA

PREPARED BY THE
NORTH CAROLINA DEPARTMENT OF TRANSPORTATION
STATE ROAD MAINTENANCE UNIT - MAPPING SECTION

IN COOPERATION WITH THE
U. S. DEPARTMENT OF TRANSPORTATION
FEDERAL HIGHWAY ADMINISTRATION



SCALE FOR ENLARGEMENTS
10,000 FOOT GRID BASED ON NORTH CAROLINA PLANE COORDINATE SYSTEM
POLYCONIC PROJECTION

NOTE: MAP INCLUDES ONLY STATE MAINTAINED ROADS OR IMPORTANT NON-SYSTEM ROADS. MILEAGE NOT SHOWN ON FRONTAGE ROADS. ROADS SHOWN AS OF OCT. 10th 2009

2011 AADT

ANNUAL AVERAGE DAILY TRAFFIC
ONSLOW COUNTY

GENERATED BY THE
TRAFFIC SURVEY GROUP
TRANSPORTATION PLANNING BRANCH