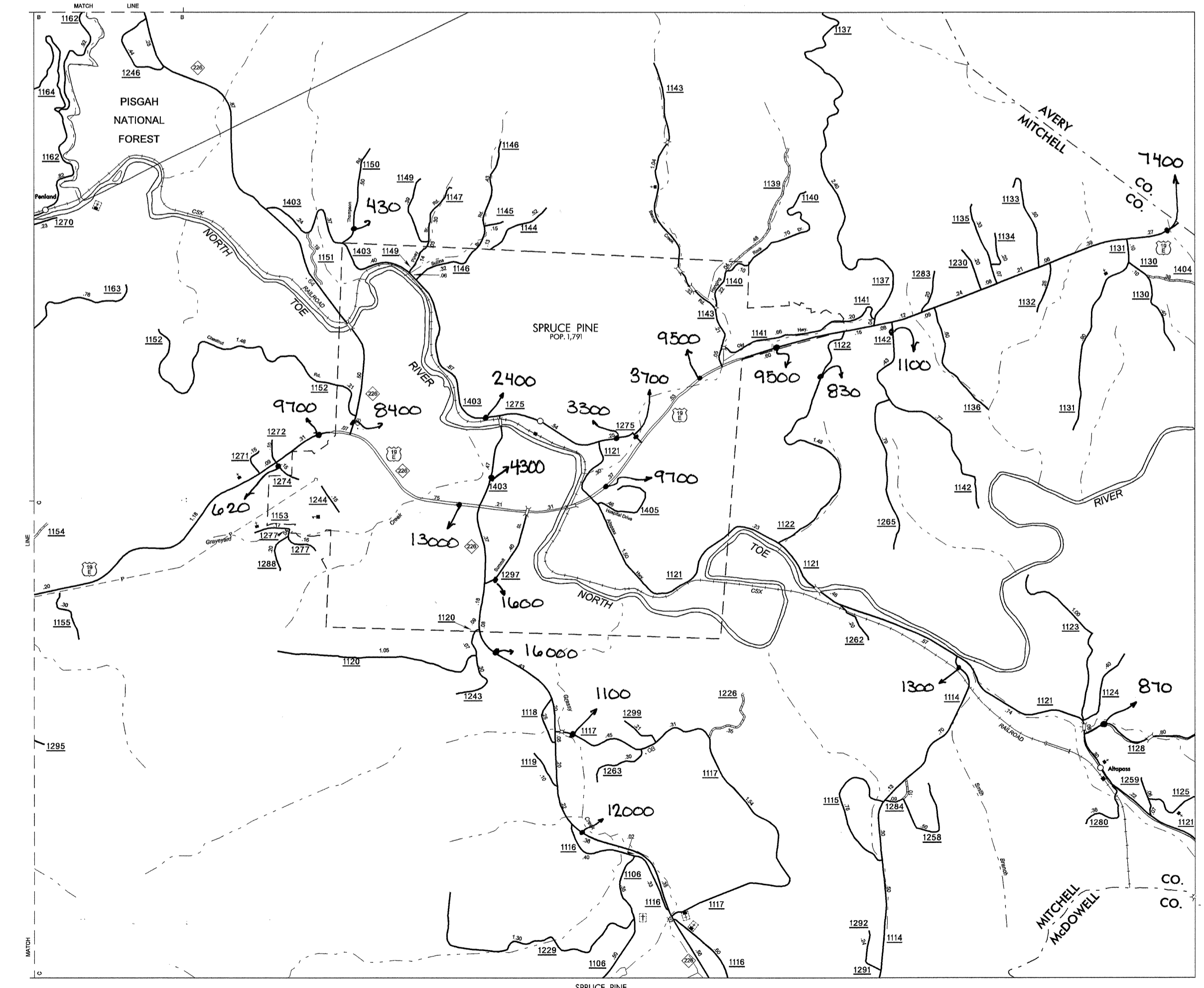
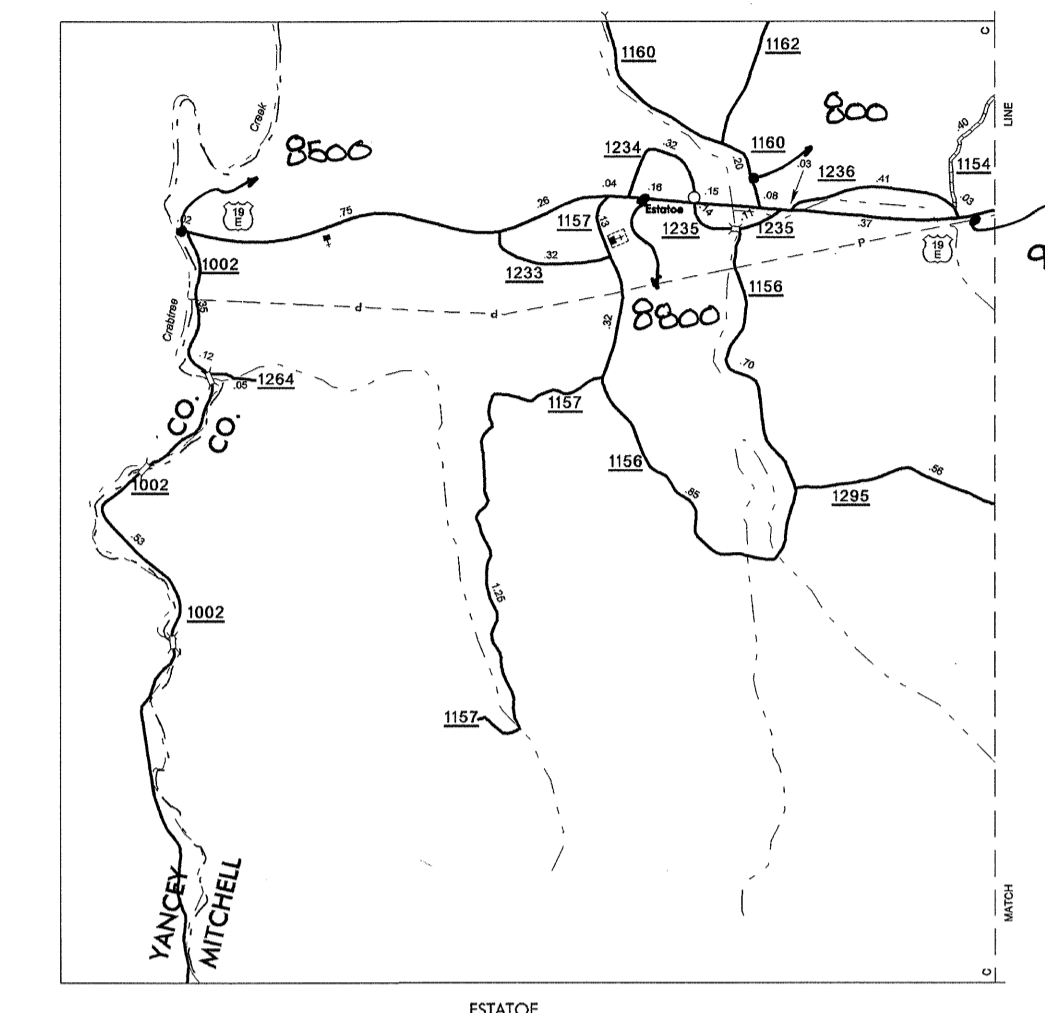
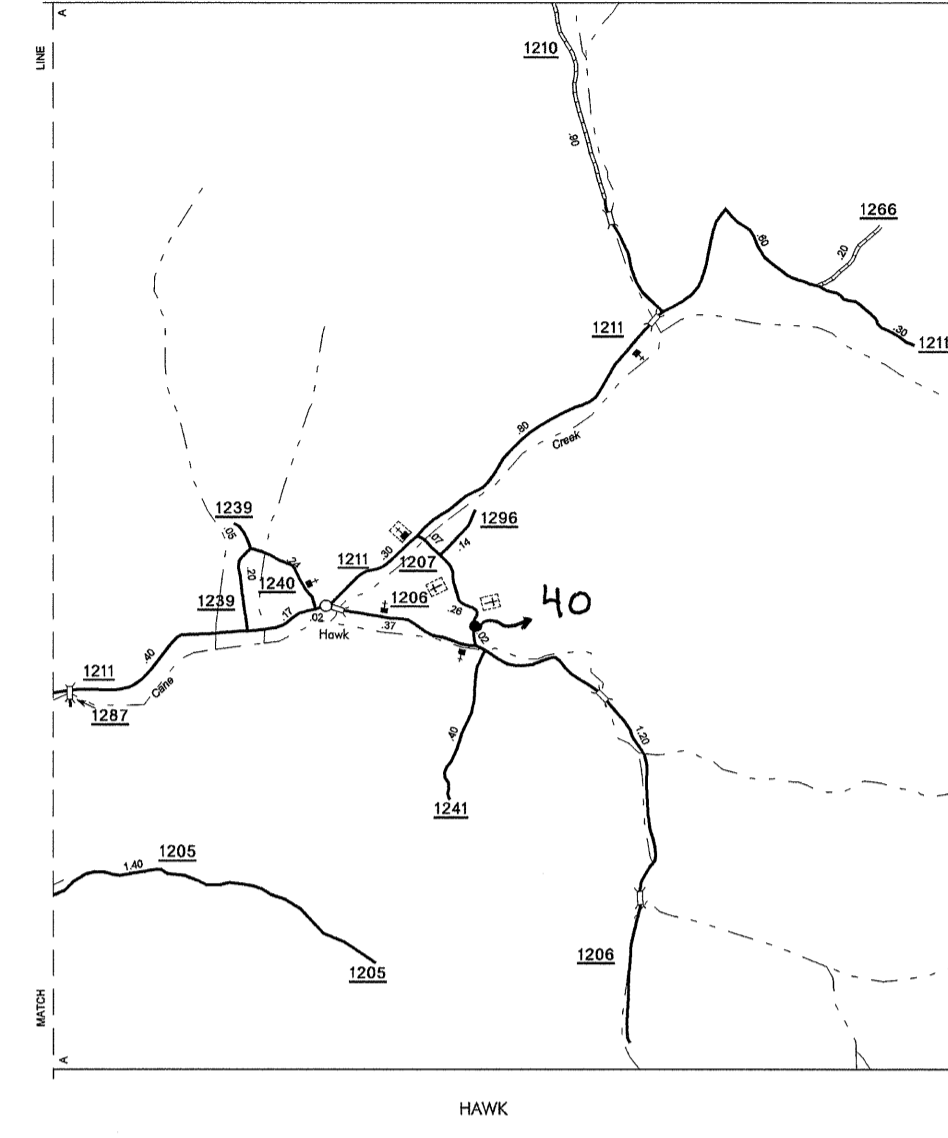
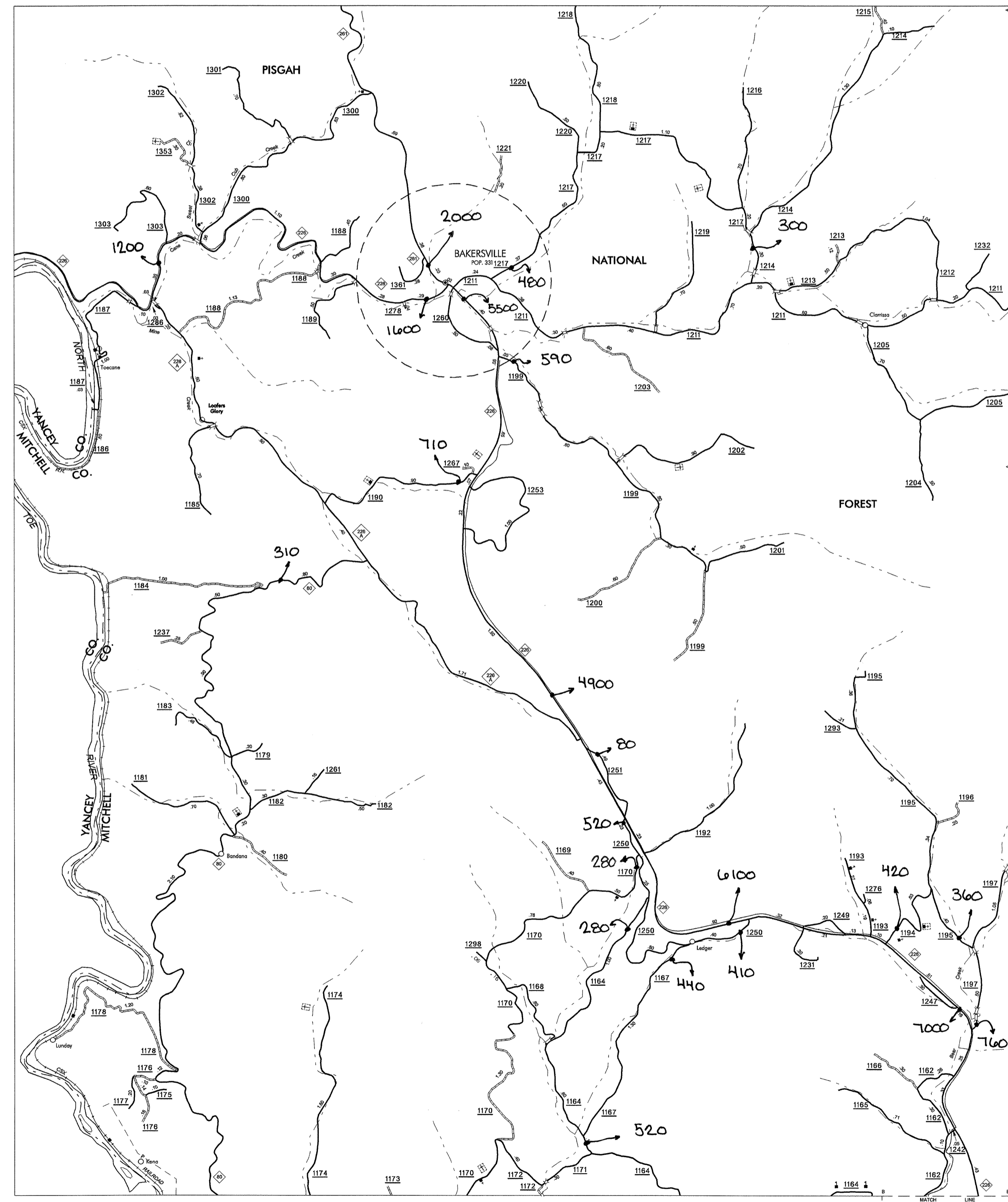


SUPER 1
 COUNTY OF MITCHELL
 TO THE PUBLIC AT A NOMINAL COST
 ADDRESS:
 N.C. DEPARTMENT OF TRANSPORTATION
 STATE ROAD MAINTENANCE UNIT - MAPPING AND INFORMATION SECTION
 4001 CALHOUN BLVD. SUITE 300
 RALEIGH, N.C. 27608
 REVISED
 10/11/07 MG
 01/25/08 MG
 2/24/09 MG
 02/20/09 MG
 10/19/09 MG



ENLARGED MUNICIPAL AND SUBURBAN AREAS
MITCHELL COUNTY
 NORTH CAROLINA
 PREPARED BY THE
 NORTH CAROLINA DEPARTMENT OF TRANSPORTATION
 STATE ROAD MAINTENANCE UNIT - MAPPING AND INFORMATION SECTION
 IN COOPERATION WITH THE
 U.S. DEPARTMENT OF TRANSPORTATION
 FEDERAL HIGHWAY ADMINISTRATION

