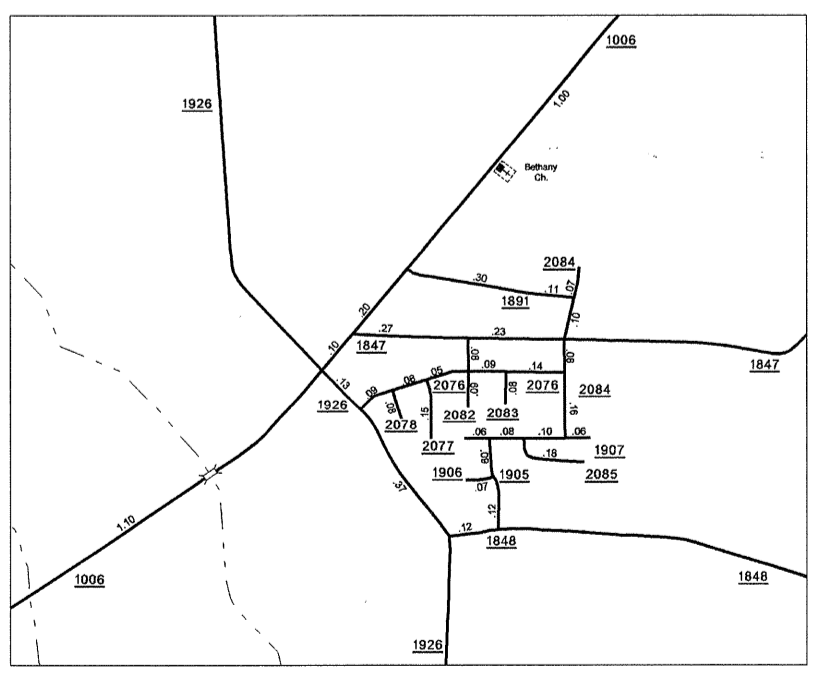
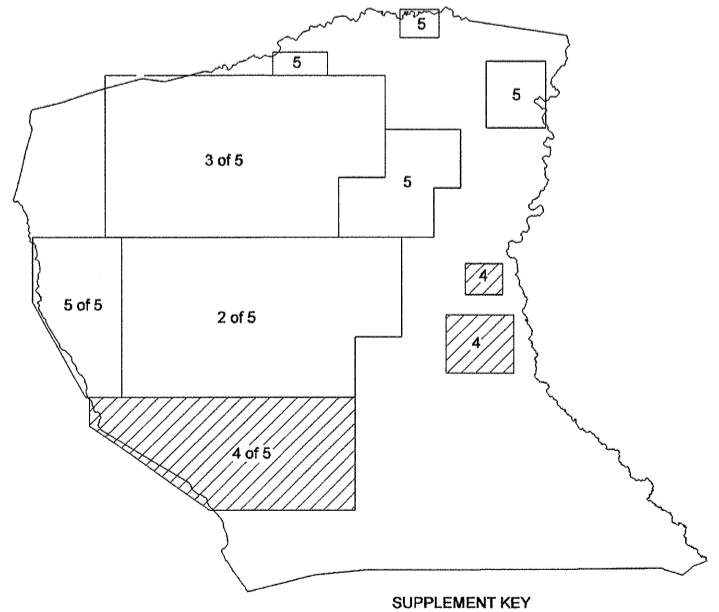


Stedman
Pop. 668



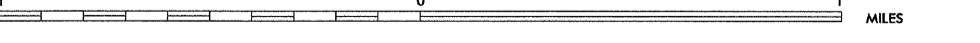
Hope Mills and Vicinity



SUPPLEMENT KEY



ENLARGED MUNICIPAL AND SUBURBAN AREAS
CUMBERLAND COUNTY
 NORTH CAROLINA
 PREPARED BY THE
 NORTH CAROLINA DEPARTMENT OF TRANSPORTATION
 STATE ROAD MAINTENANCE UNIT - MAPPING AND INFORMATION SECTION
 IN COOPERATION WITH THE
 U.S. DEPARTMENT OF TRANSPORTATION
 FEDERAL HIGHWAY ADMINISTRATION



11,000 FOOT GRID BASED ON NORTH CAROLINA PLANE COORDINATE SYSTEM
 POLYCONIC PROJECTION
 SHEET 4 OF 5

CUMBERLAND
 REVISED
 BY 11/08/05/AM
 1/25/10 SM

2011 AADT
 ANNUAL AVERAGE DAILY TRAFFIC
 CUMBERLAND COUNTY
 GENERATED BY THE
TRAFFIC SURVEY GROUP
 TRANSPORTATION PLANNING BRANCH