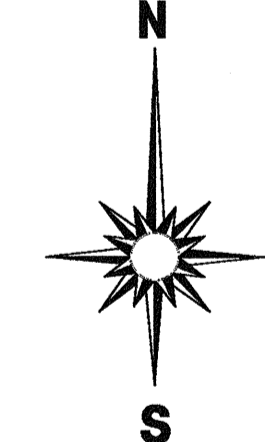
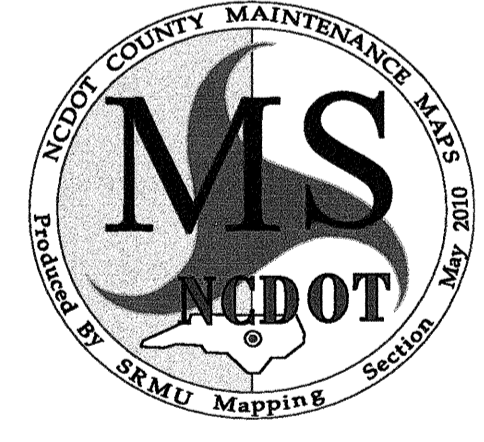
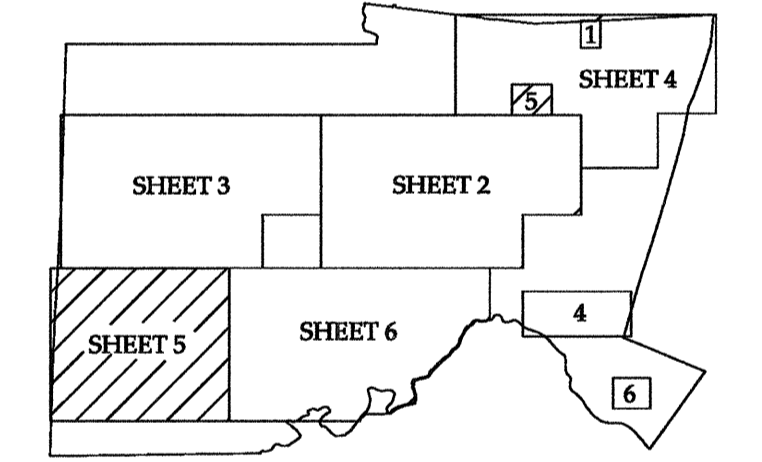
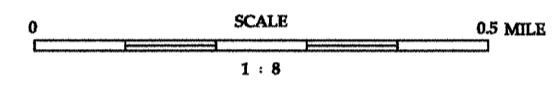
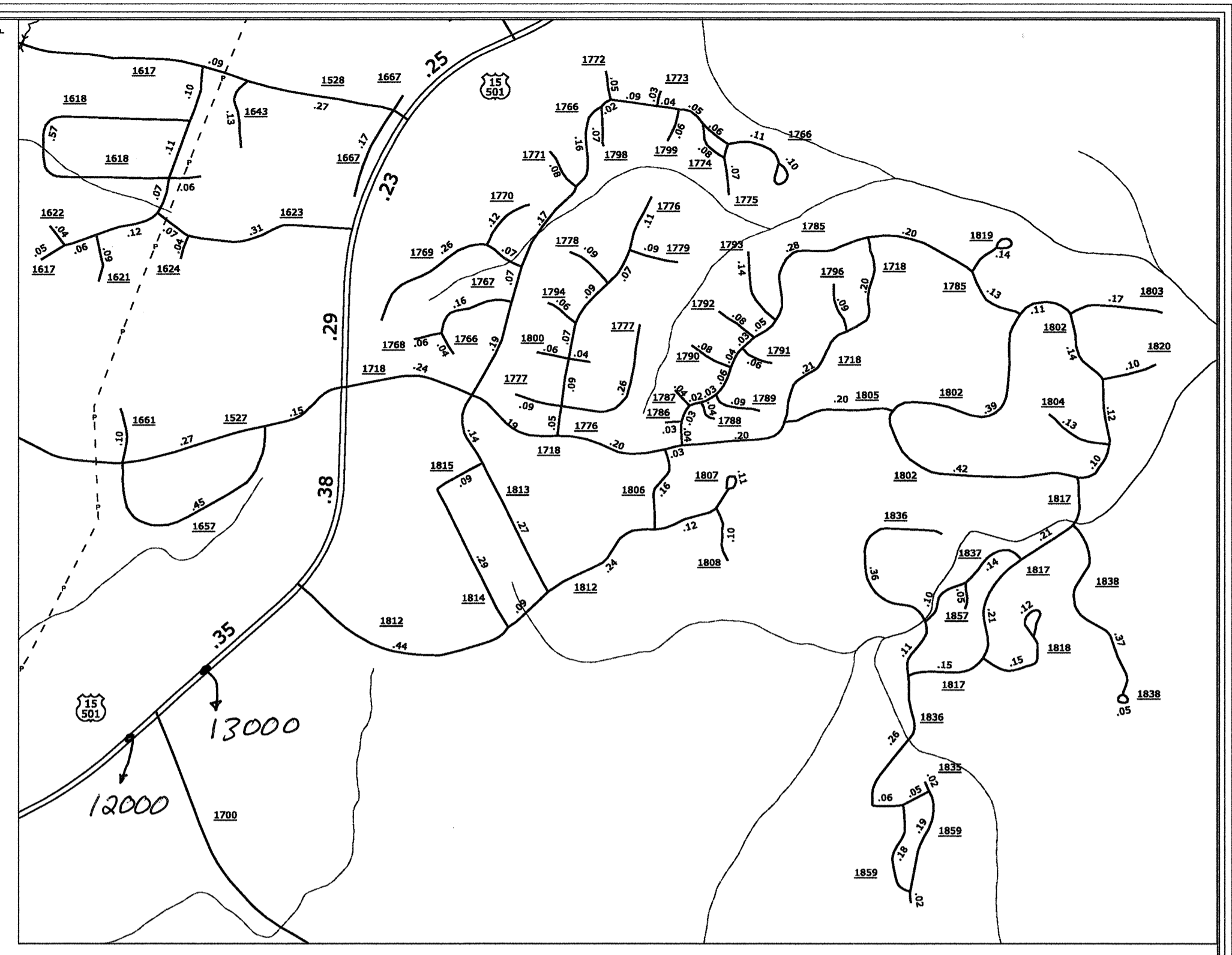
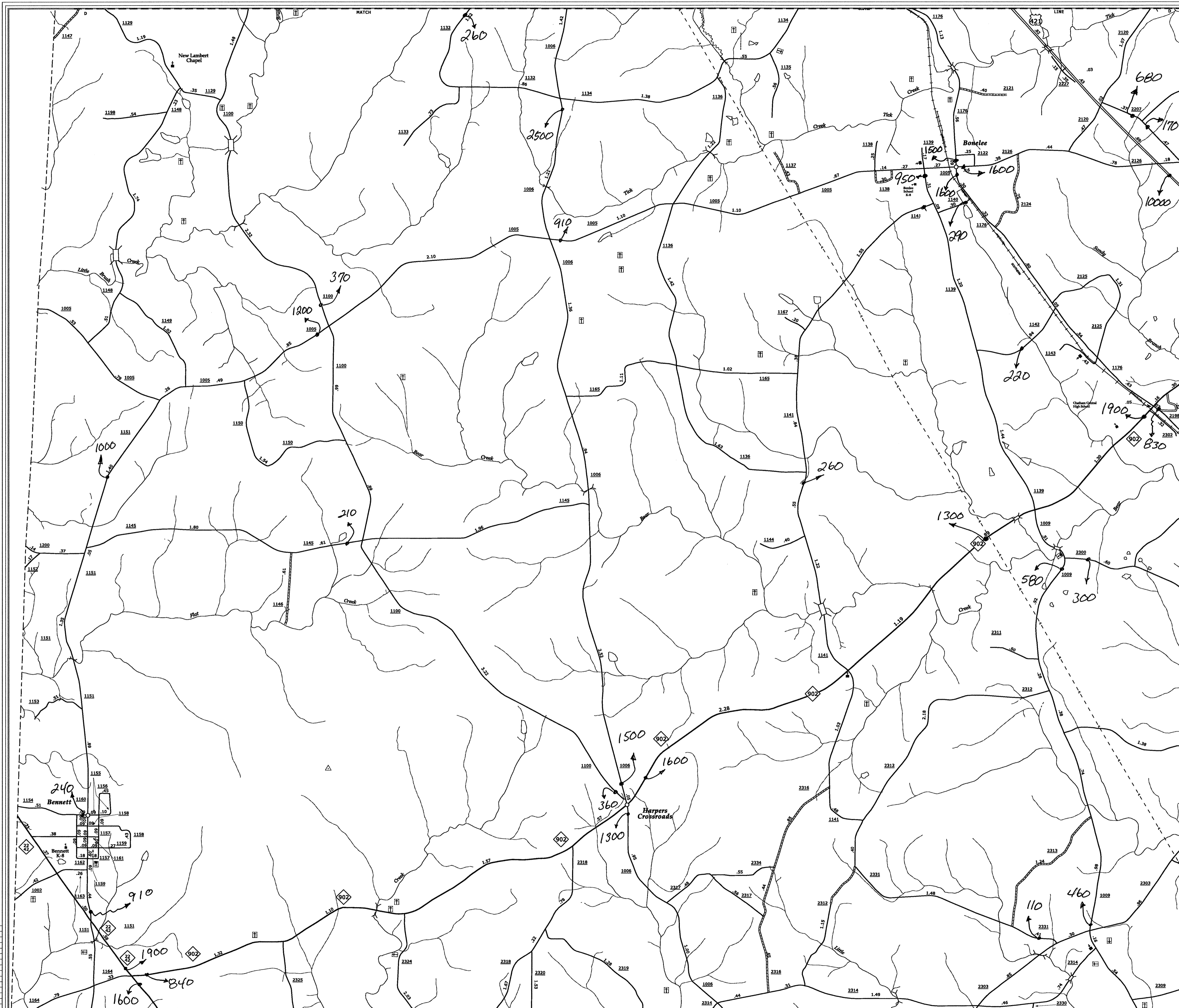
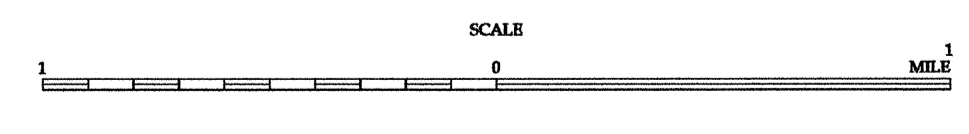


Disclaimer: The SRMU's goal is to provide the most accurate information as possible. The magnitude of the data prevents any guarantee of accuracy or completeness. If you find any information that is incorrect, please send your request to the SRMU Section.



ENLARGED MUNICIPAL AND SUBURBAN AREAS  
**CHATHAM COUNTY**  
NORTH CAROLINA  
PREPARED BY THE  
NORTH CAROLINA DEPARTMENT OF TRANSPORTATION  
STATE ROAD MAINTENANCE UNIT - MAPPING SECTION  
IN COOPERATION WITH THE  
U.S. DEPARTMENT OF TRANSPORTATION  
FEDERAL HIGHWAY ADMINISTRATION



10,000 FOOT GRID BASED ON NORTH CAROLINA PLANE COORDINATE SYSTEM  
POLYCONIC PROJECTION

SHEET 5 OF 6

DIVISION 8 DISTRICT 1 CHATHAM COUNTY NORTH CAROLINA 037

2010 ADT  
ANNUAL AVERAGE DAILY TRAFFIC  
CHATHAM COUNTY  
GENERATED BY THE  
**TRAFFIC SURVEY GROUP**  
TRANSPORTATION PLANNING BRANCH

CHATHAM  
REVISED  
N.C. DEPARTMENT OF TRANSPORTATION  
STATE ROAD MAINTENANCE UNIT  
MAPPING SECTION  
RALEIGH, N.C. 27619