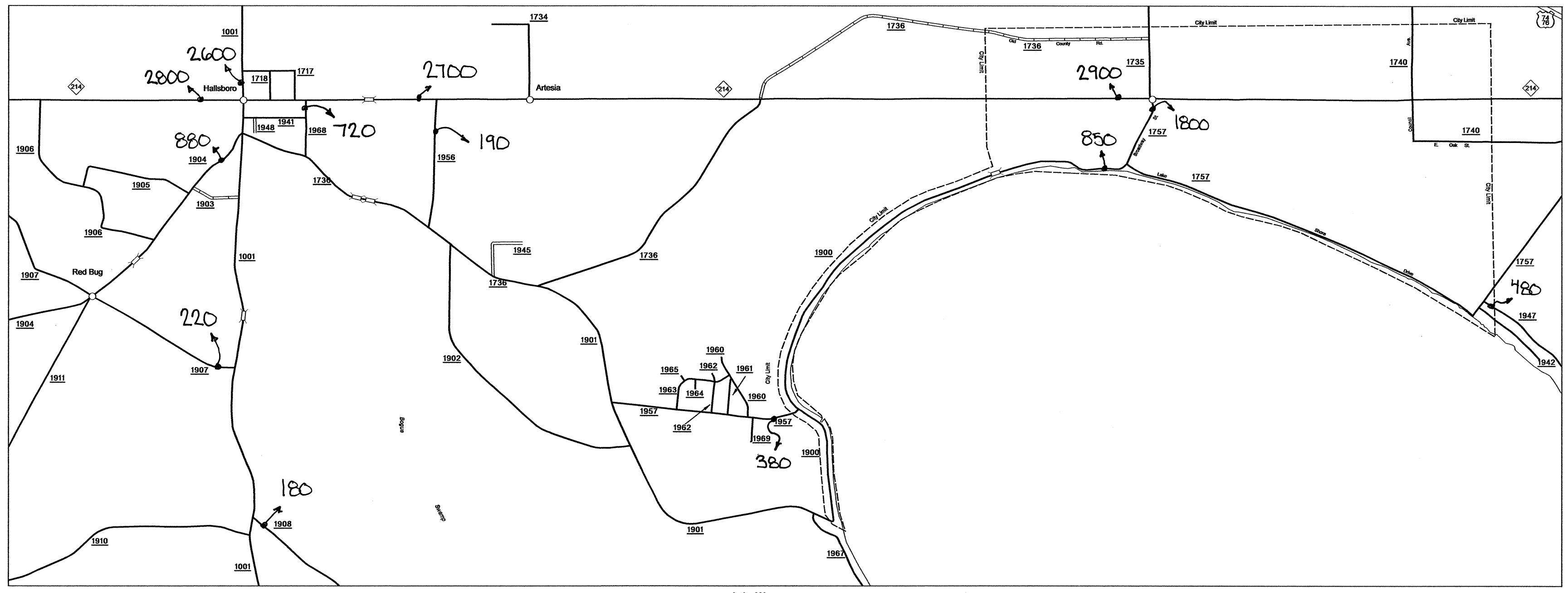
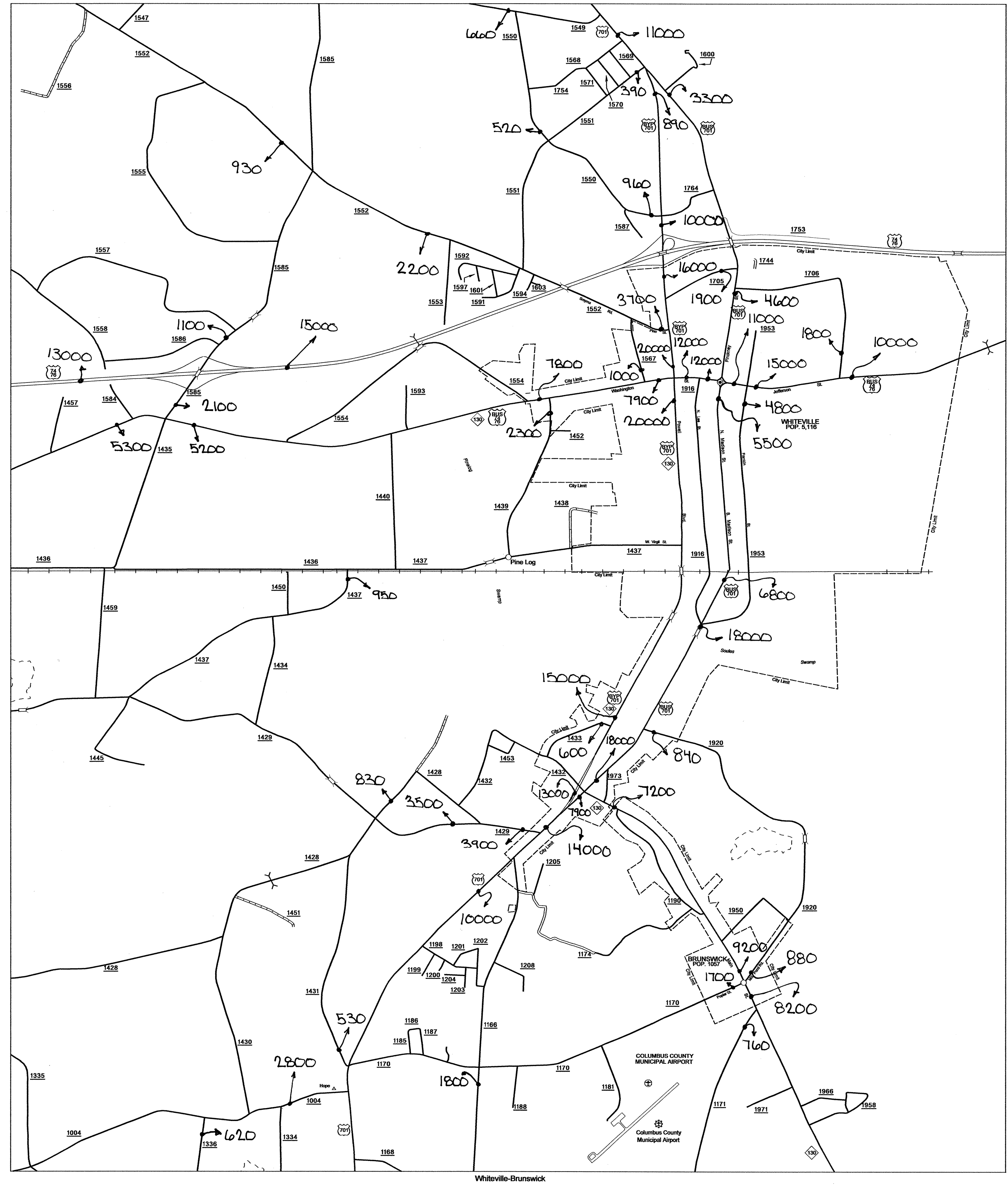


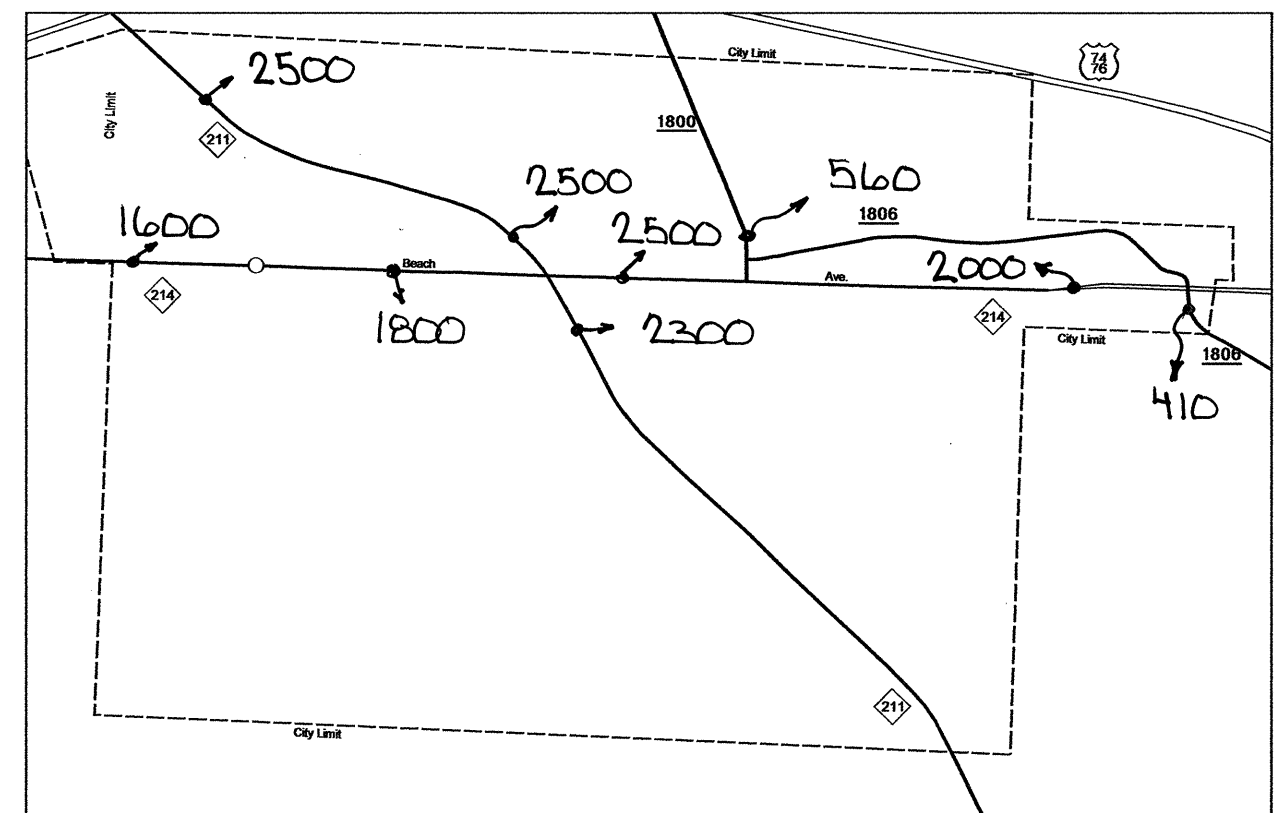
Disclaimer:

COLUMBUS SUP 1

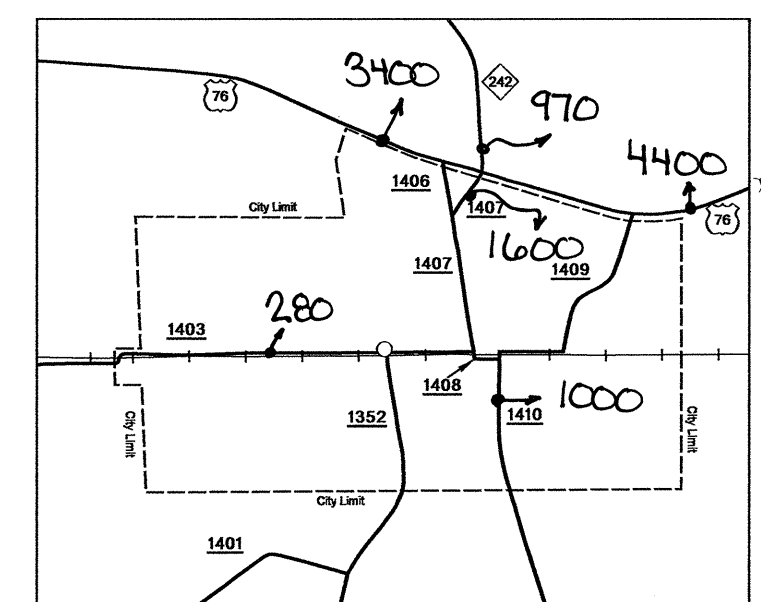
REVISED
 1/26/05 RLM
 8/30/05 MACB
 9/1/06 JMB
 10/24/06 JMB
 2/9/07 JMB
 5/11/07 JMB
 1/8/08 JMB
 2/12/08 JMB
 2/25/08 JMB
 4/29/08 JMB
 12/1/09 BKX



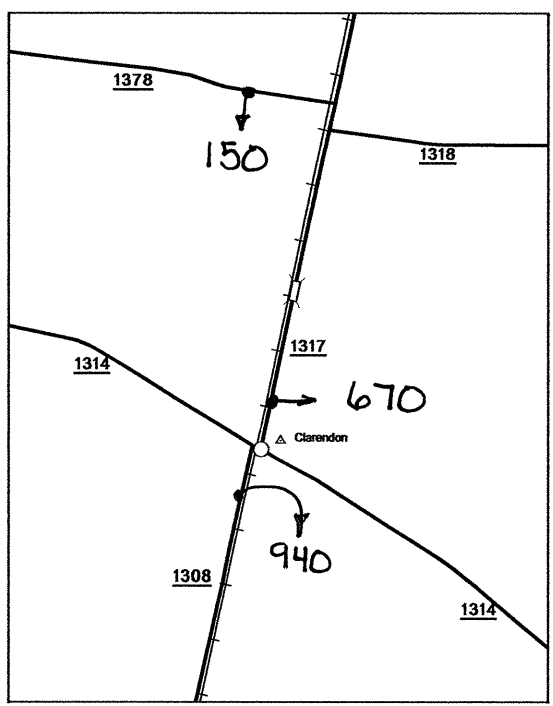
Lake Waccamaw
Pop. 1365



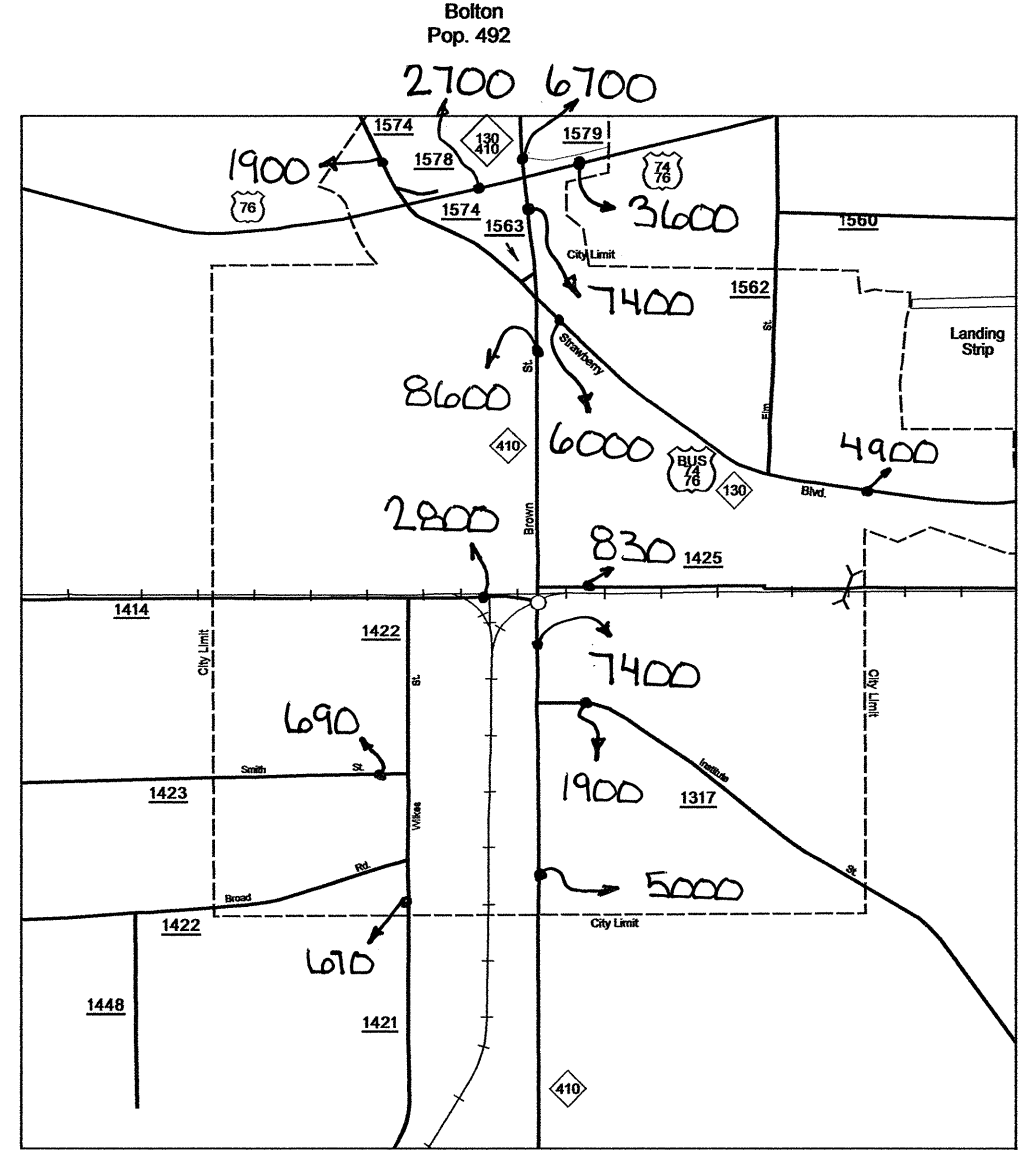
Bolton
Pop. 492



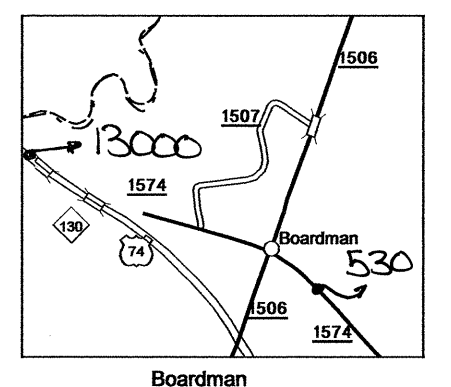
Carro Gordo
Pop. 244



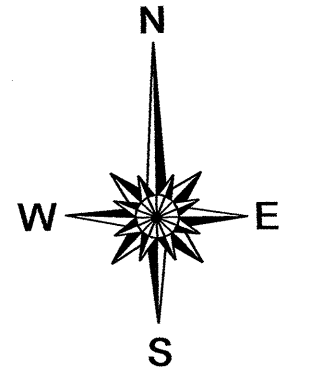
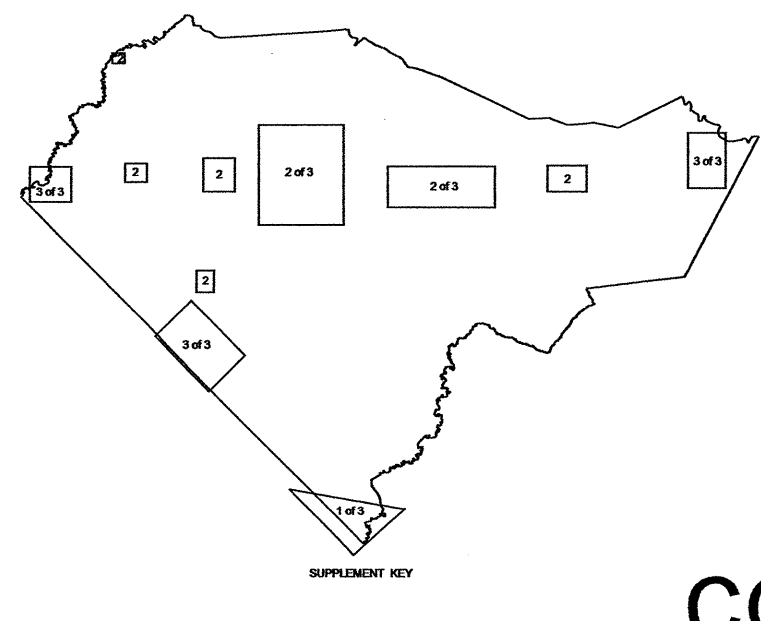
Clarendon



Chadbourne
Pop. 2,124



Boardman
Pop. 201



2009 AADT
 ANNUAL AVERAGE DAILY TRAFFIC
COLUMBUS COUNTY
 NORTH CAROLINA

GENERATED BY THE
TRAFFIC SURVEY GROUP
 TRANSPORTATION PLANNING BRANCH
 BASE MAPPING PREPARED BY
 NORTH CAROLINA DEPARTMENT OF TRANSPORTATION
 STATE ROAD MAINTENANCE UNIT
 MAPPING & INFORMATION SECTION
 IN COOPERATION WITH THE
 U.S. DEPARTMENT OF TRANSPORTATION
 FEDERAL HIGHWAY ADMINISTRATION

