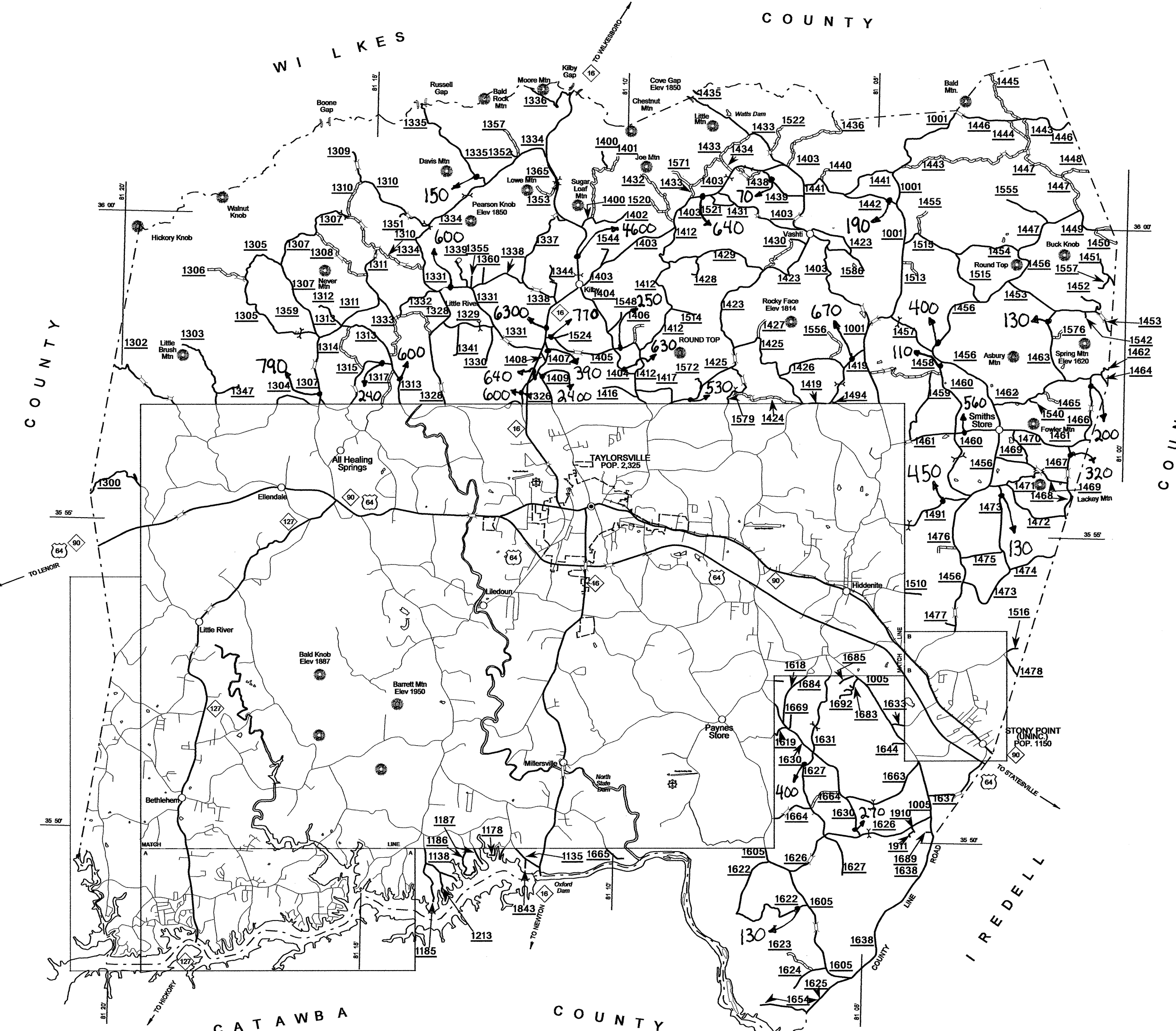
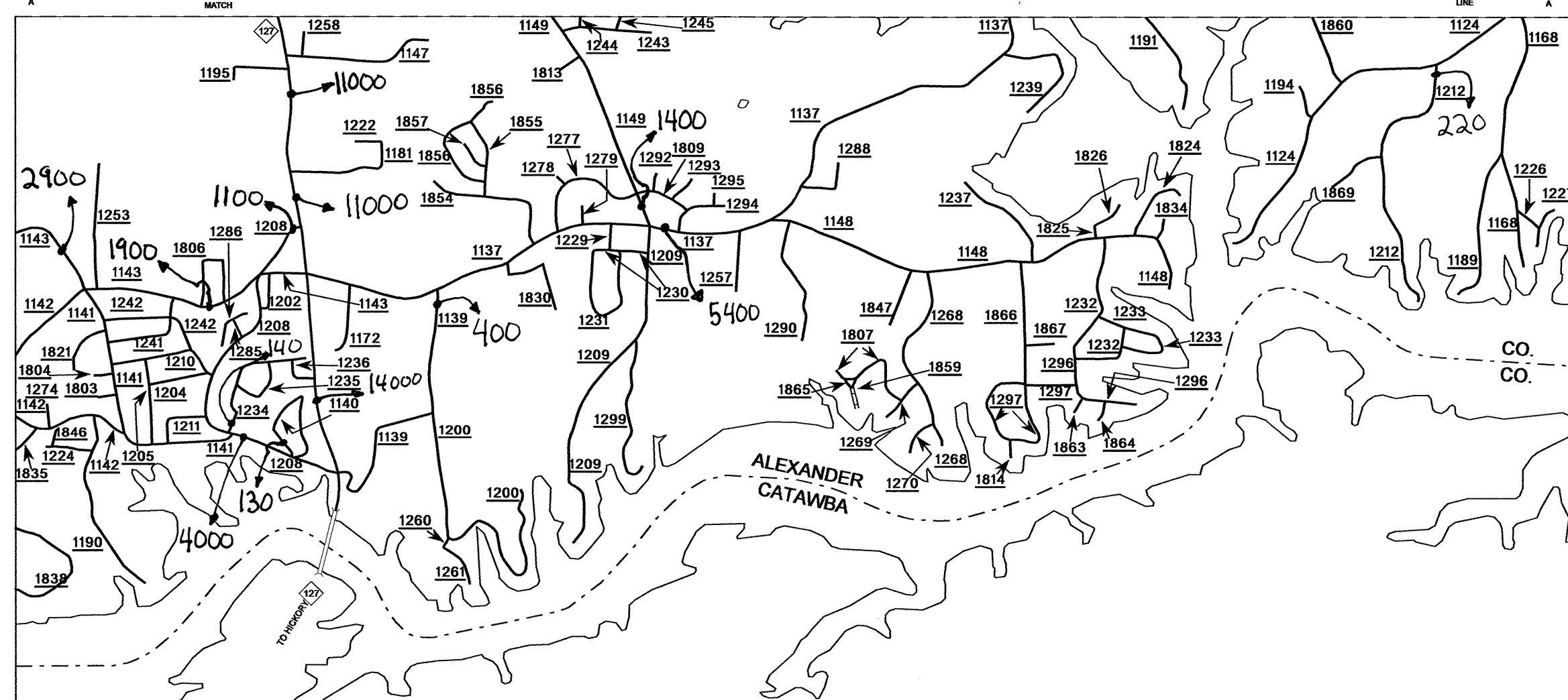
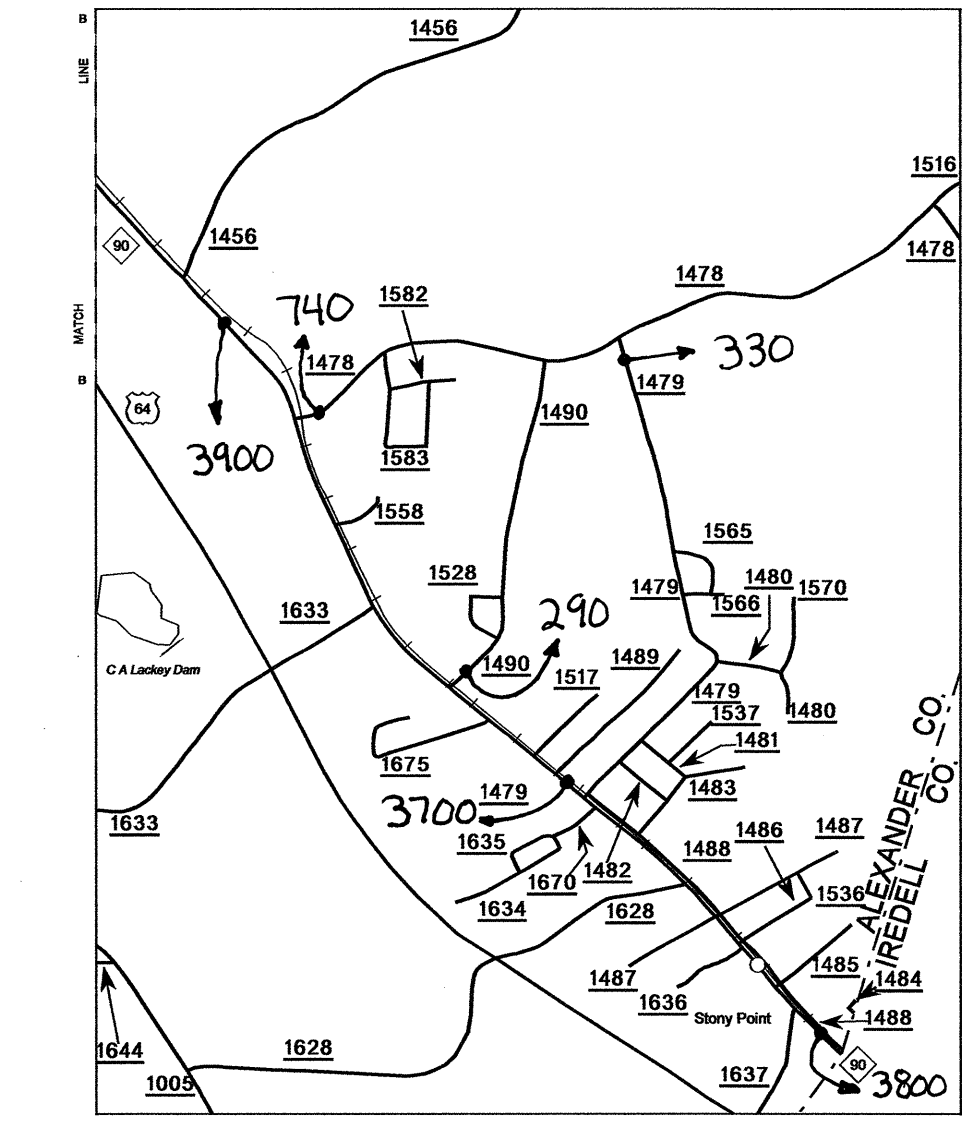
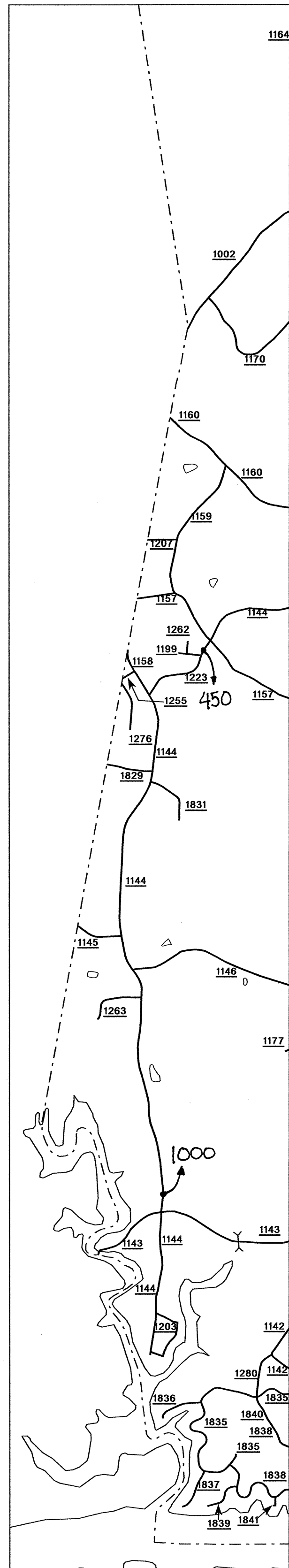


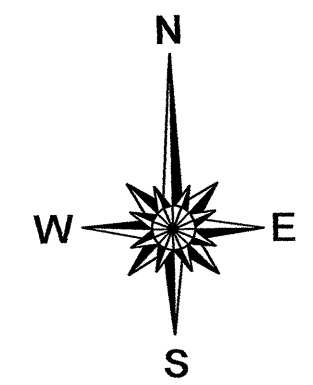
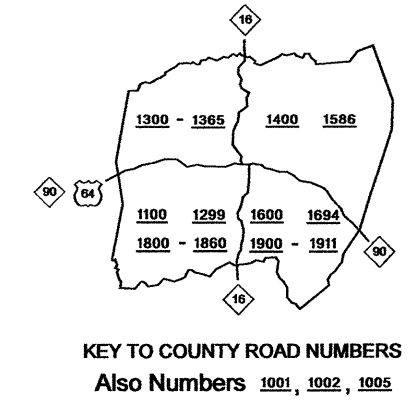
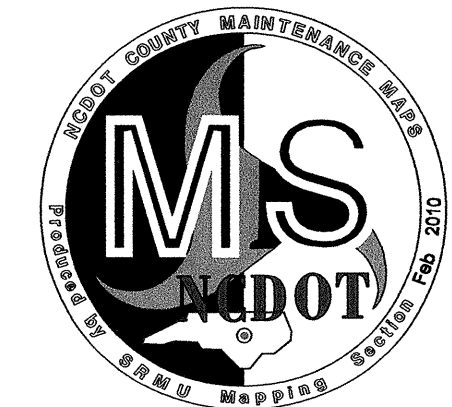
Disclaimer: The IMG Units goal is to provide the most accurate information as possible, the magnitude of the data prevents any guarantee of accuracy or completeness. If you find any information that is incorrect, please send your request to the IMG Unit.

COPIES OF THIS MAP ARE AVAILABLE TO THE PUBLIC AT A NOMINAL COST. ADDRESS: DIVISION OF TRANSPORTATION, INFORMATION SERVICES AND PLANNING, 1547 MAIL SERVICE CENTER, RALEIGH, NC 27699-1547. PHONE: (919) 733-2500. FAX: (919) 733-2501.

REVISED:
12/31/03 SRC
1/7/04 SRC
3/2/05 SRC
4/20/04 SRC
6/30/04 SRC
6/17/05 SRC
6/19/05 SRC
12/30/05 SRC
2/10/06 BCH
1/15/06 BCH
1/14/07 BCH
5/22/07 BCH
7/24/07 BCH
5/28/08 BCH



- LEGEND**
- PRIMITIVE OR UNIMPROVED ROAD
 - GRADED AND DRAINED ROAD
 - SOIL, GRAVEL OR STONE SURFACED ROAD
 - HARD SURFACED ROAD
 - 4 LANE UNDIVIDED HIGHWAY
 - DIVIDED HIGHWAY
 - HIGHWAY WITH FRONTAGE ROADS
 - FCA
 - FULL CONTROL ACCESS
 - NON-SYSTEM ROAD
 - PROJECTED LOCATION
 - INTERSECTION DISTANCE
 - TRAFFIC CIRCLE
 - HIGHWAY INTERCHANGE
 - DETAILED HIGHWAY INTERCHANGE
 - ROAD THROUGH MOUNTAIN PASS
 - HIGHWAY BRIDGE
 - UNDERPASS
 - OVERPASS
 - GRAB SPAN ON BRIDGE
 - HIGHWAY TUNNEL
 - FORD
 - INTERSTATE HIGHWAY
 - U.S. NUMBERED HIGHWAY
 - N.C. NUMBERED HIGHWAY
 - U.S. NUMBERED BICYCLE ROUTE
 - N.C. NUMBERED BICYCLE ROUTE
 - INTERSTATE INTERCHANGE NUMBER
 - SECONDARY ROAD NUMBER
 - CABLE
 - RAILROAD, ANY NUMBER OF TRACKS USED BY SINGLE OPERATING COMPANY
 - RAILROAD, ANY NUMBER OF TRACKS USED BY MORE THAN ONE OPERATING COMPANY ON SAME OR ADJACENT RIGHTS-OF-WAY
 - RAILROAD STATION
 - GRADE CROSSING
 - UNDERPASS
 - OVERPASS
 - RAILROAD TUNNEL
 - INSET AREA
 - URBAN EXTENSION
 - BOUNDARY LINE
 - RESERVATION OR PARK BOUNDARY
 - CITY LIMIT
 - NATIONAL FOREST BOUNDARY
 - STATE FOREST BOUNDARY
 - FEDERAL GAMEDLAND BOUNDARY
 - STATE GAMEDLAND BOUNDARY
 - MILITARY RESERVATION BOUNDARY
 - COUNTY LINE
 - STATE LINE
 - INCORPORATED CITY OR VILLAGE, (GENERALIZED)
 - FREE OR TOLL FERRY
 - CANAL
 - NARROW STREAM
 - WIDE STREAM
 - DAM WITH LOCK
 - DAM
 - RESERVOIR, POND, OR LAKE
 - COMMUNITY AND TOWN CENTER
 - COUNTY SEAT
 - SCHOOL
 - COLLEGE OR UNIVERSITY
 - HOSPITAL
 - CHURCH
 - CHURCH WITH CEMETERY
 - CEMETERY
 - PATROL STATION
 - CORRECTIONAL OR PENAL INSTN.
 - HIGHWAY GARAGE OR MAINT. YARD
 - HIGHWAY DIV. OR DIST. OFFICE
 - WEIGHT STATION
 - MONUMENT-SMALL, HISTORICAL SITE
 - LIGHTHOUSE
 - MOUNTAIN PEAK
 - REST AREA
 - TRIANGULATION STATION
 - COAST GUARD STATION
 - MILITARY AIRFIELD
 - COMMERCIAL OR MUNICIPAL FIELD
 - HANGAR ON FIELD
 - LANDING STRIP
 - MARKED AUXILIARY FIELD



2009 AADT
ANNUAL AVERAGE DAILY TRAFFIC
ALEXANDER COUNTY
NORTH CAROLINA
GENERATED BY THE
TRAFFIC SURVEY GROUP
TRANSPORTATION PLANNING BRANCH

BASE MAPPING PREPARED BY
NORTH CAROLINA DEPARTMENT OF TRANSPORTATION
STATE ROAD MAINTENANCE UNIT
MAPPING & INFORMATION SECTION
IN COOPERATION WITH THE
U.S. DEPARTMENT OF TRANSPORTATION
FEDERAL HIGHWAY ADMINISTRATION

