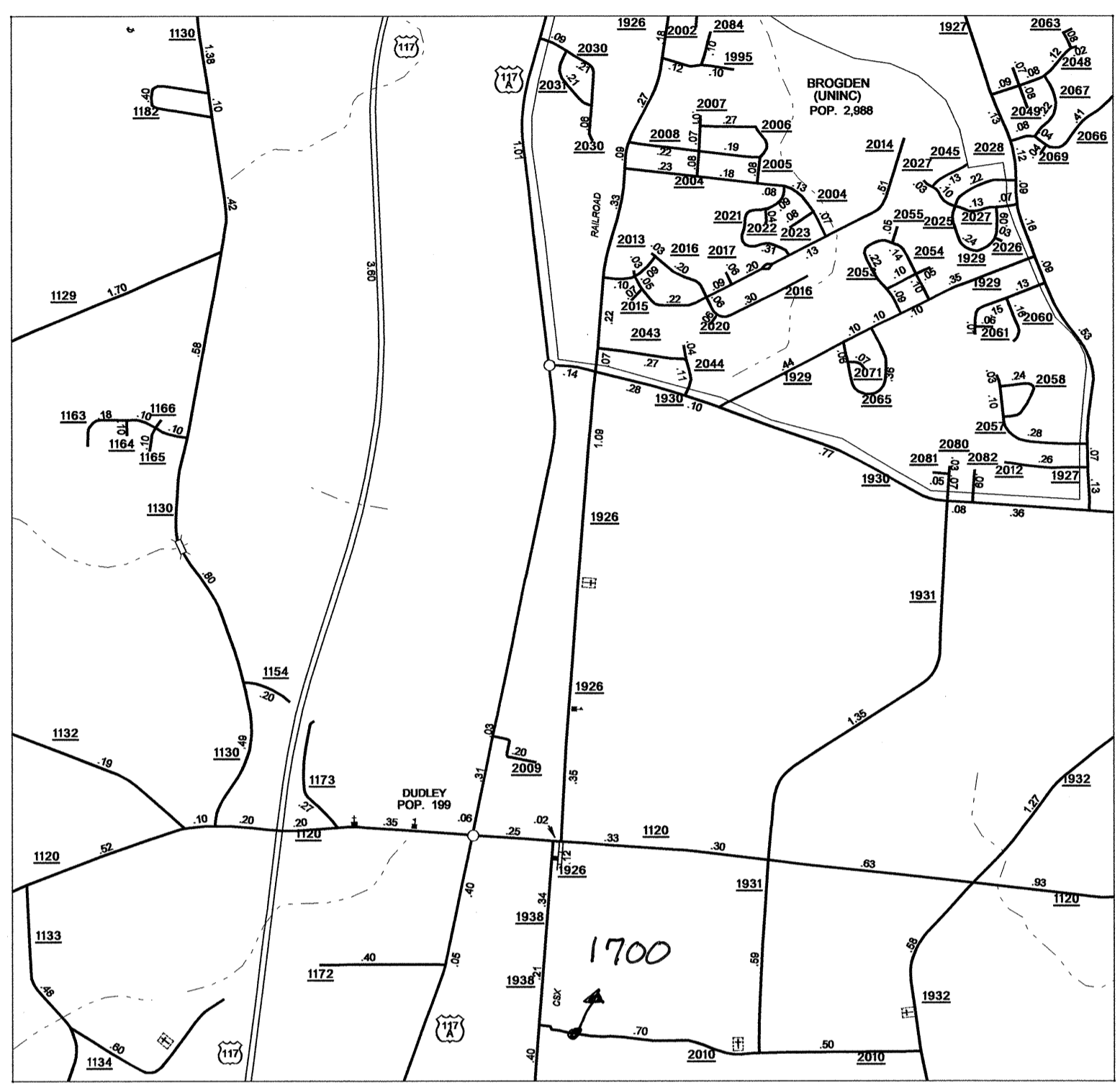
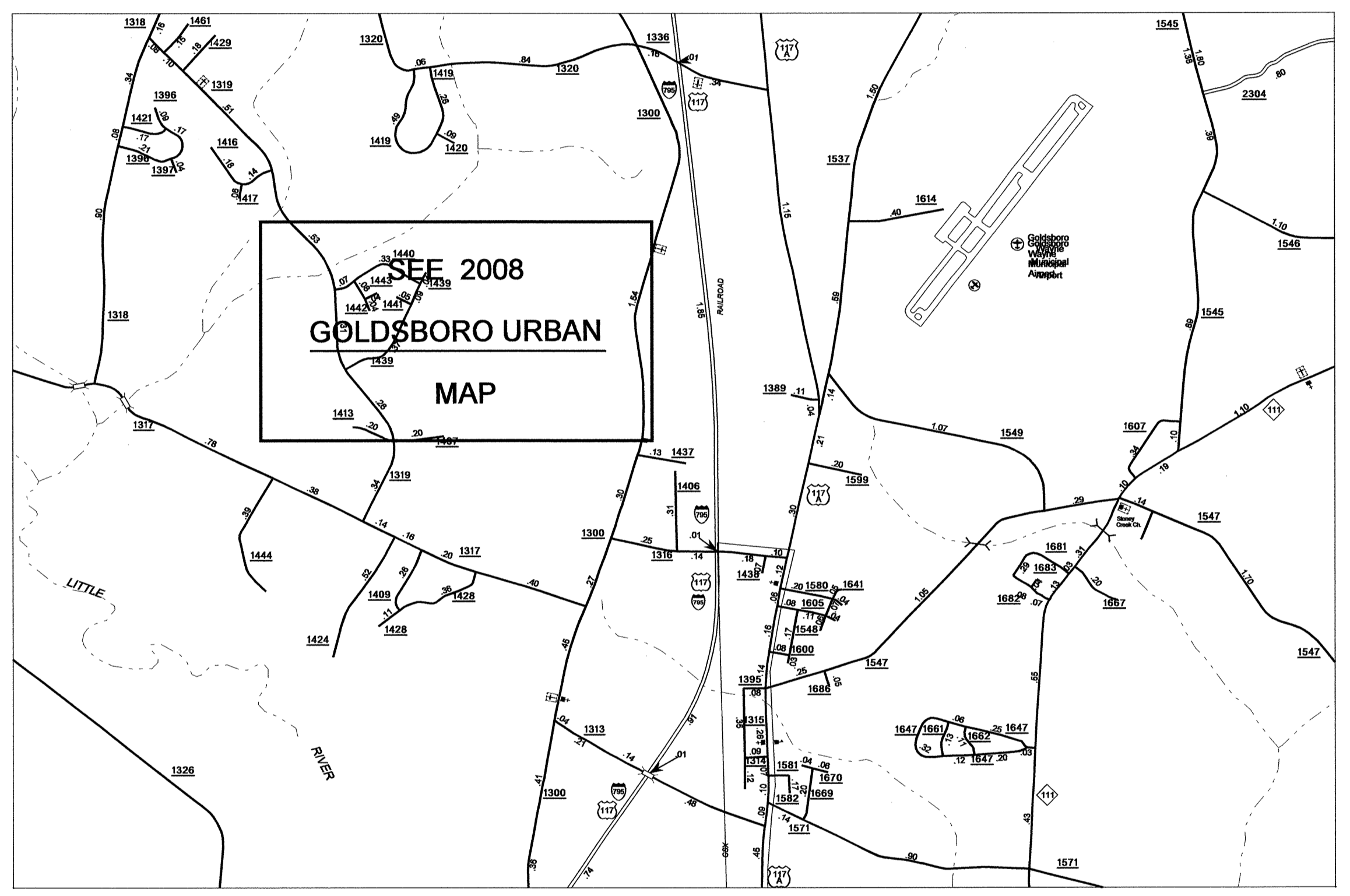
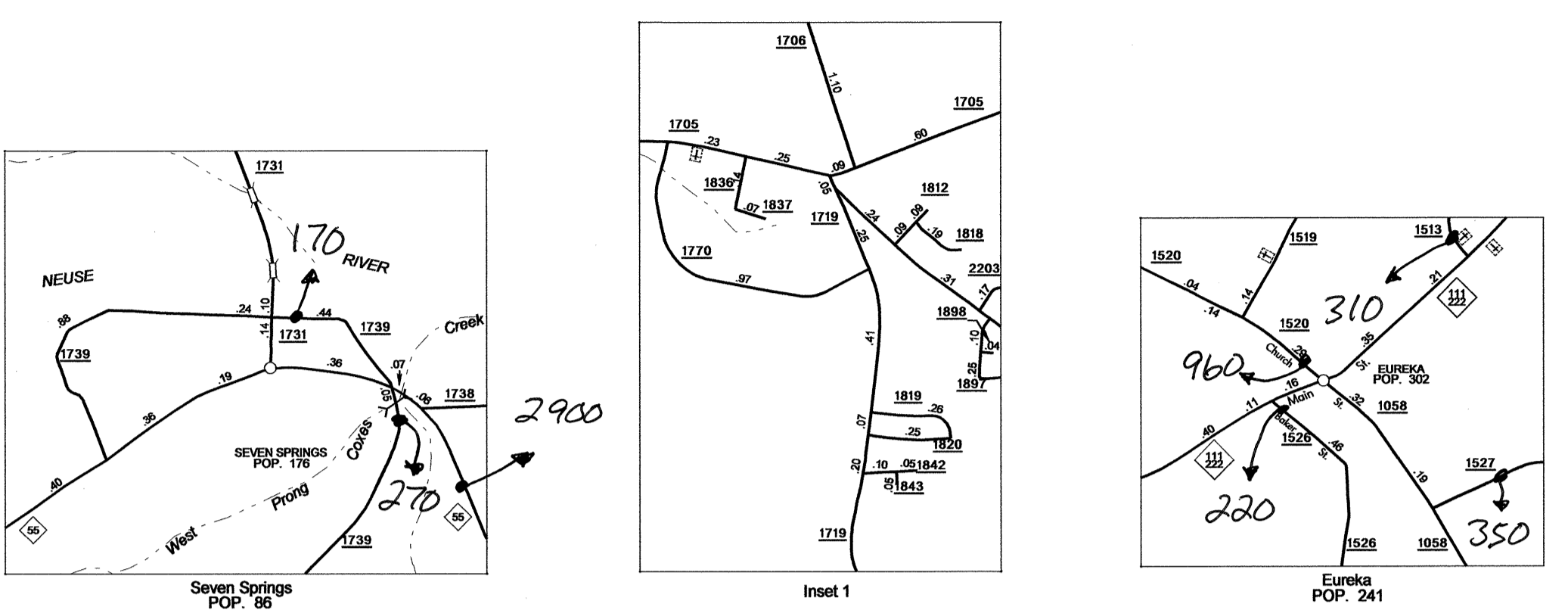


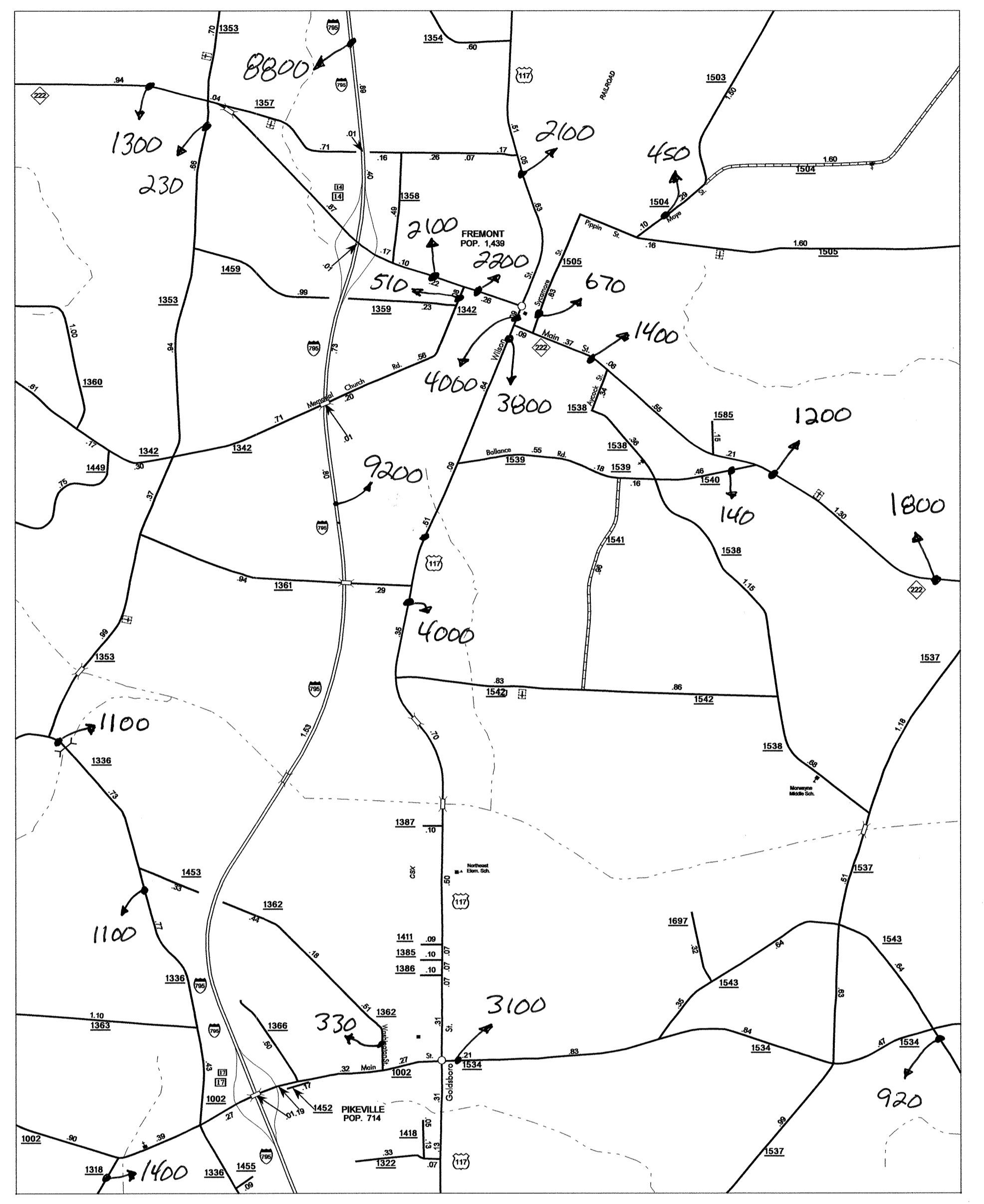
Disclaimer: The IMU Unit's goal is to provide the most accurate information as possible, the magnitude of the data prevents any guarantee of accuracy or completeness. If you find any information that is incorrect, please send your request to the IMU Unit.



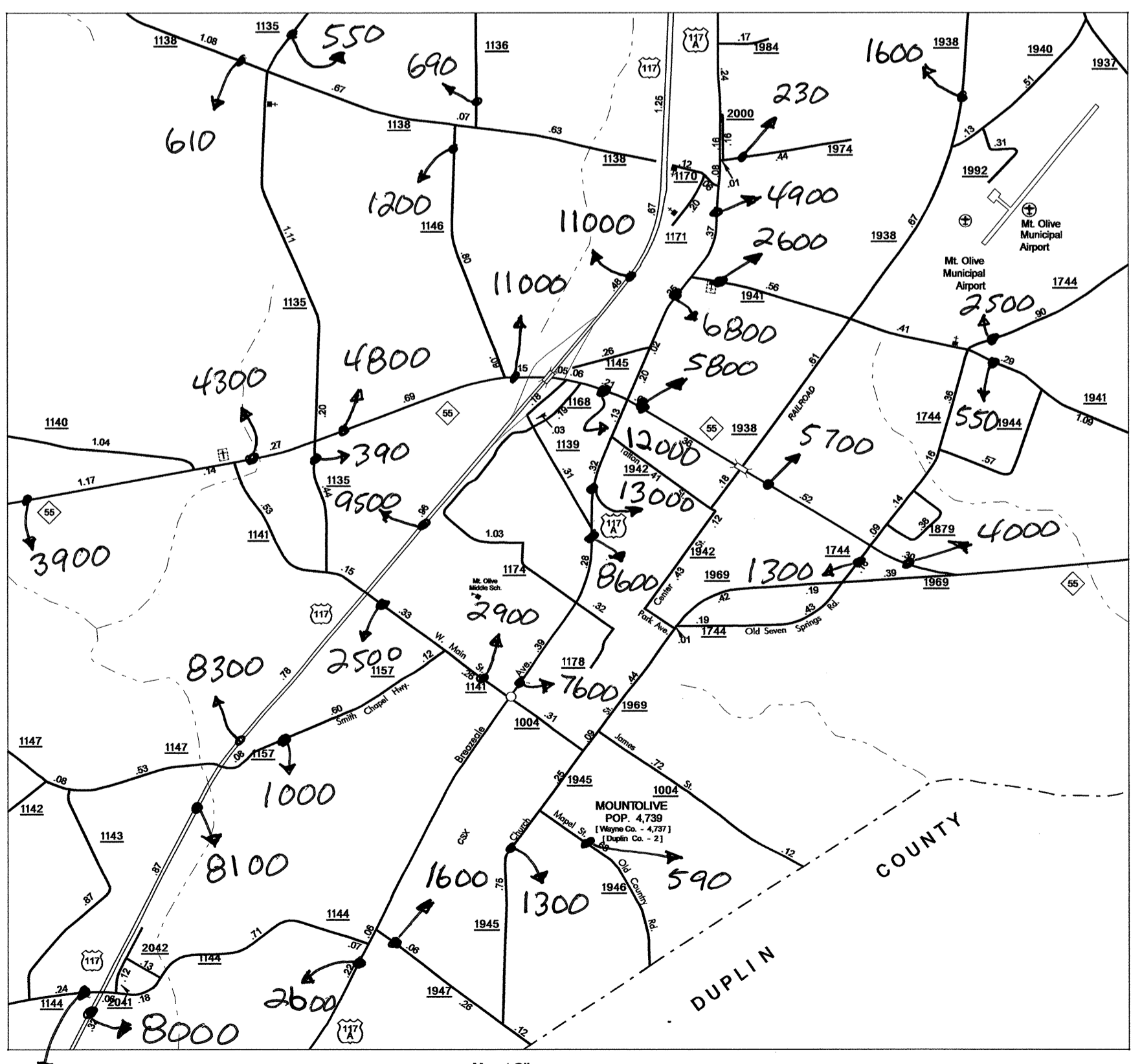
Dudley and Brogden



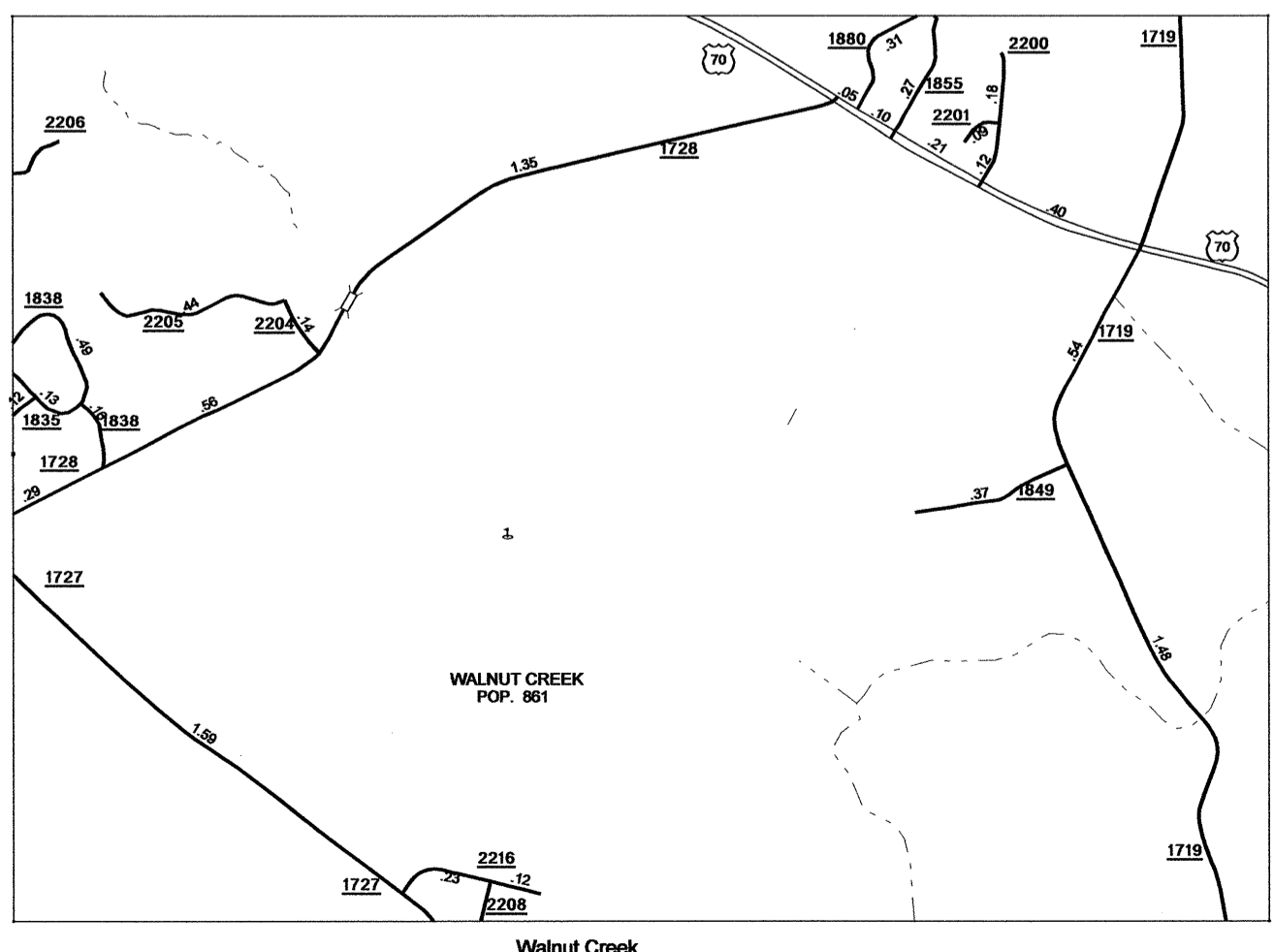
Belfast and vicinity



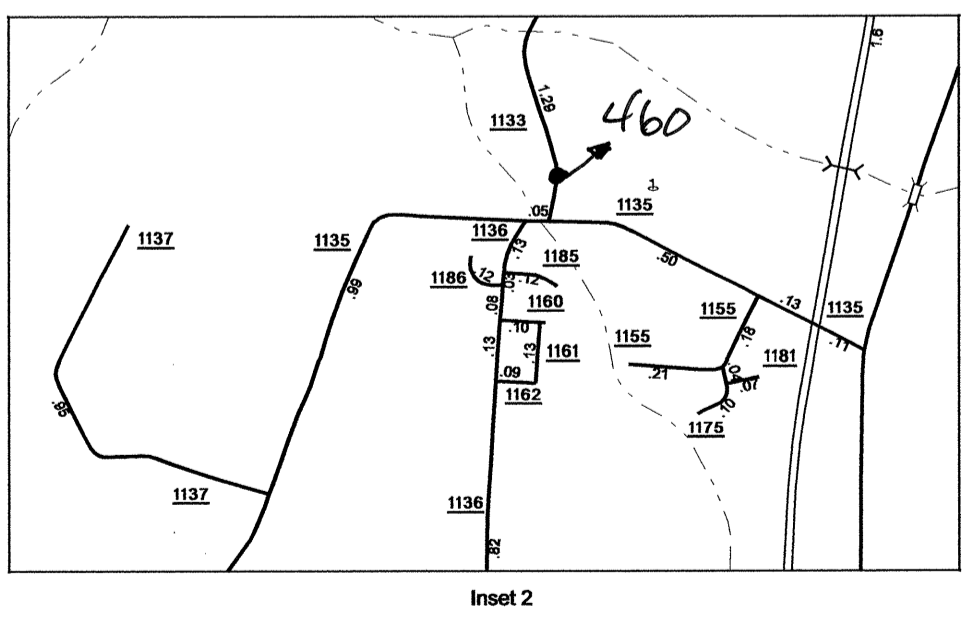
Fremont and Pikeville
POP. 2,153



Mount Olive
Pop. 4,596



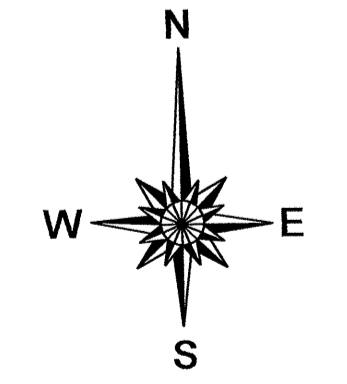
Walnut Creek
Pop. 866



Inset 2

COPIES OF THIS MAP AVAILABLE
 FROM THE STATE ARCHIVE
 ADDRESS:
 N.C. DEPARTMENT OF TRANSPORTATION
 100 SOUTH MAIN STREET
 RALEIGH, N.C. 27603

| |
|--------------|
| REVISED |
| 3/26/08 BDK |
| 4/29/08 BDK |
| 8/26/08 BDK |
| 10/17/08 BDK |
| 4/24/09 BDK |



2008 AADT
ANNUAL AVERAGE DAILY TRAFFIC
WAYNE COUNTY
NORTH CAROLINA
GENERATED BY THE
TRAFFIC SURVEY GROUP
TRANSPORTATION PLANNING BRANCH

BASE MAPPING PREPARED BY
NORTH CAROLINA DEPARTMENT OF TRANSPORTATION
STATE ROAD MAINTENANCE UNIT
MAPPING & INFORMATION SECTION
IN COOPERATION WITH THE
U.S. DEPARTMENT OF TRANSPORTATION
FEDERAL HIGHWAY ADMINISTRATION

