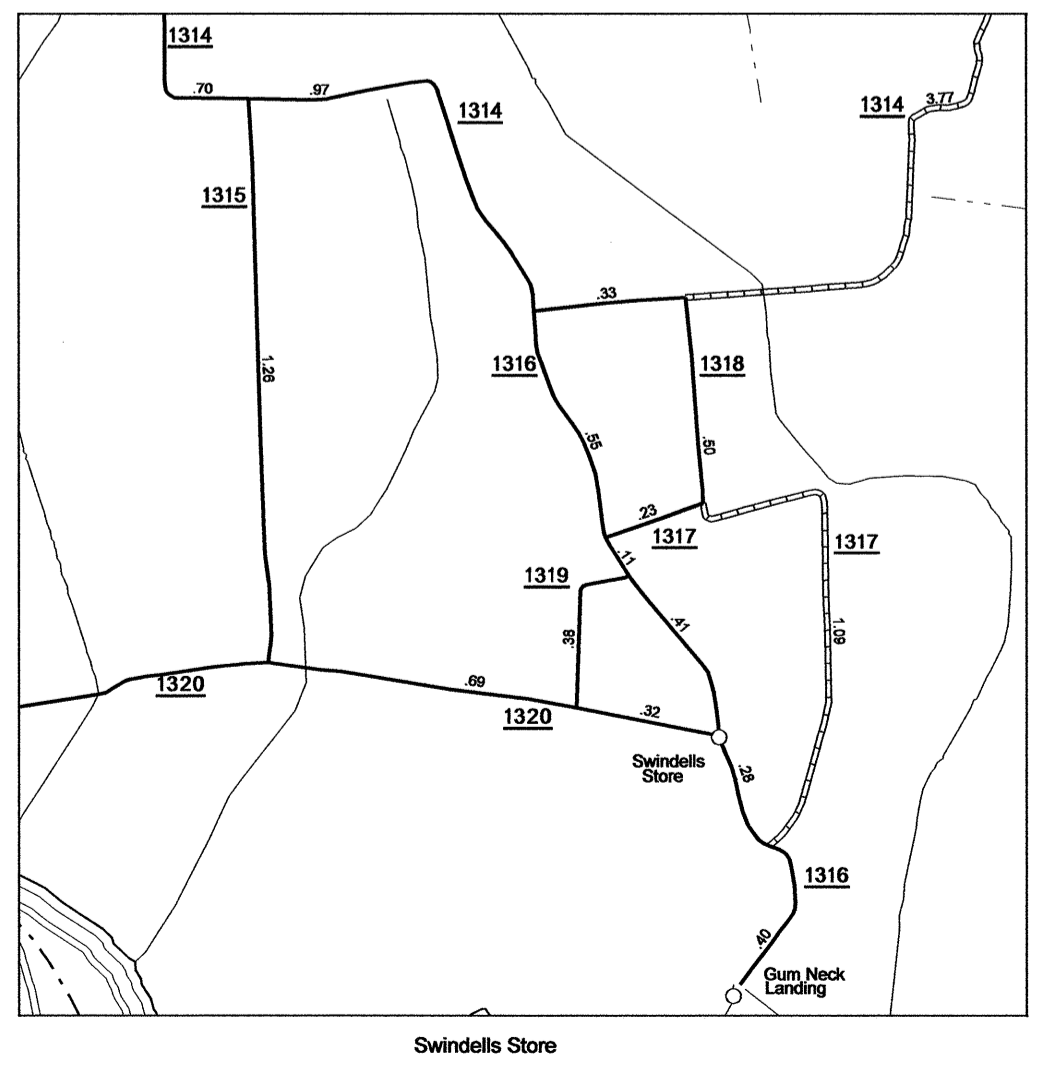
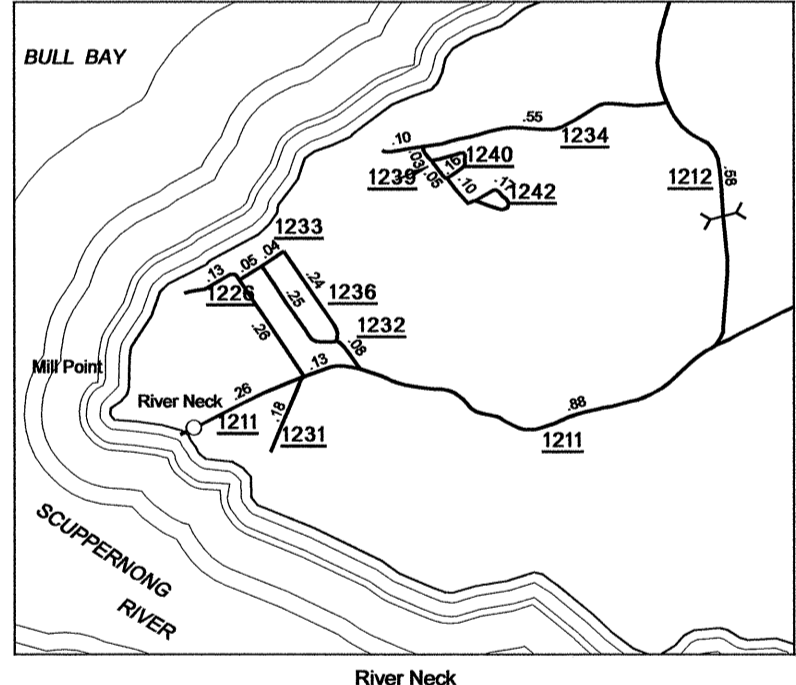
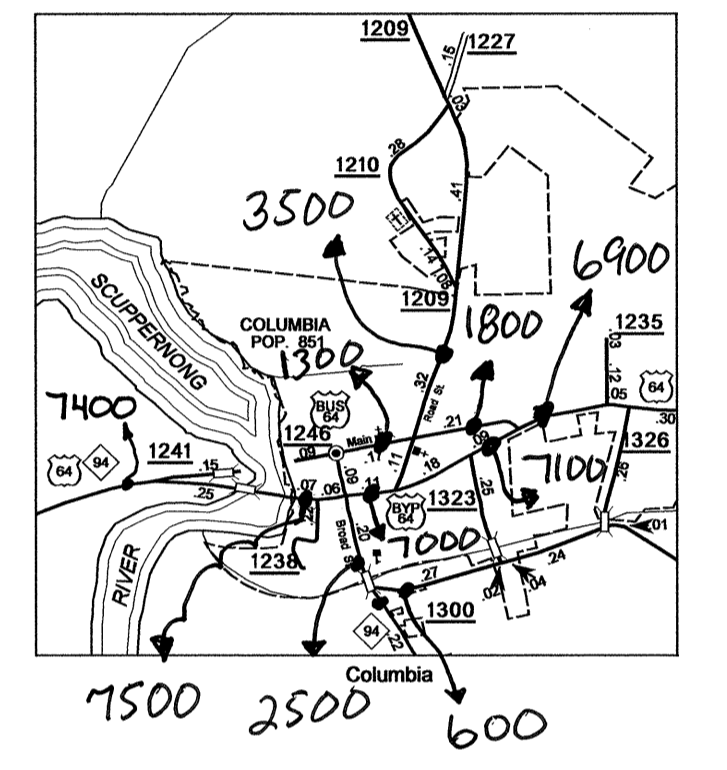
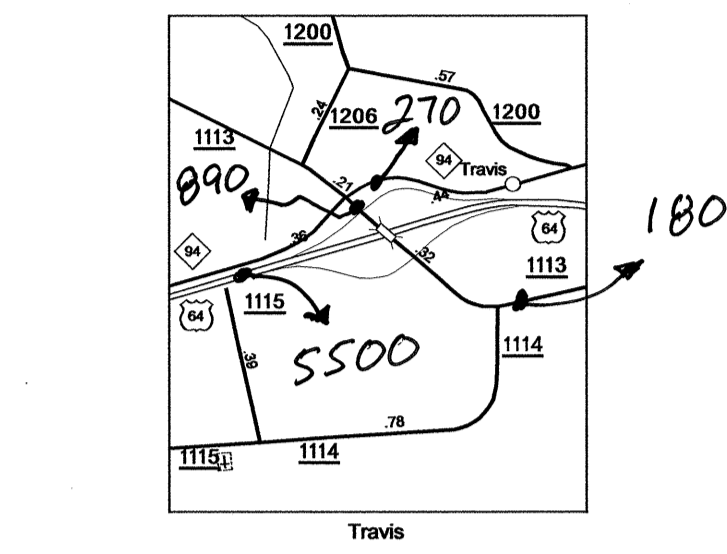
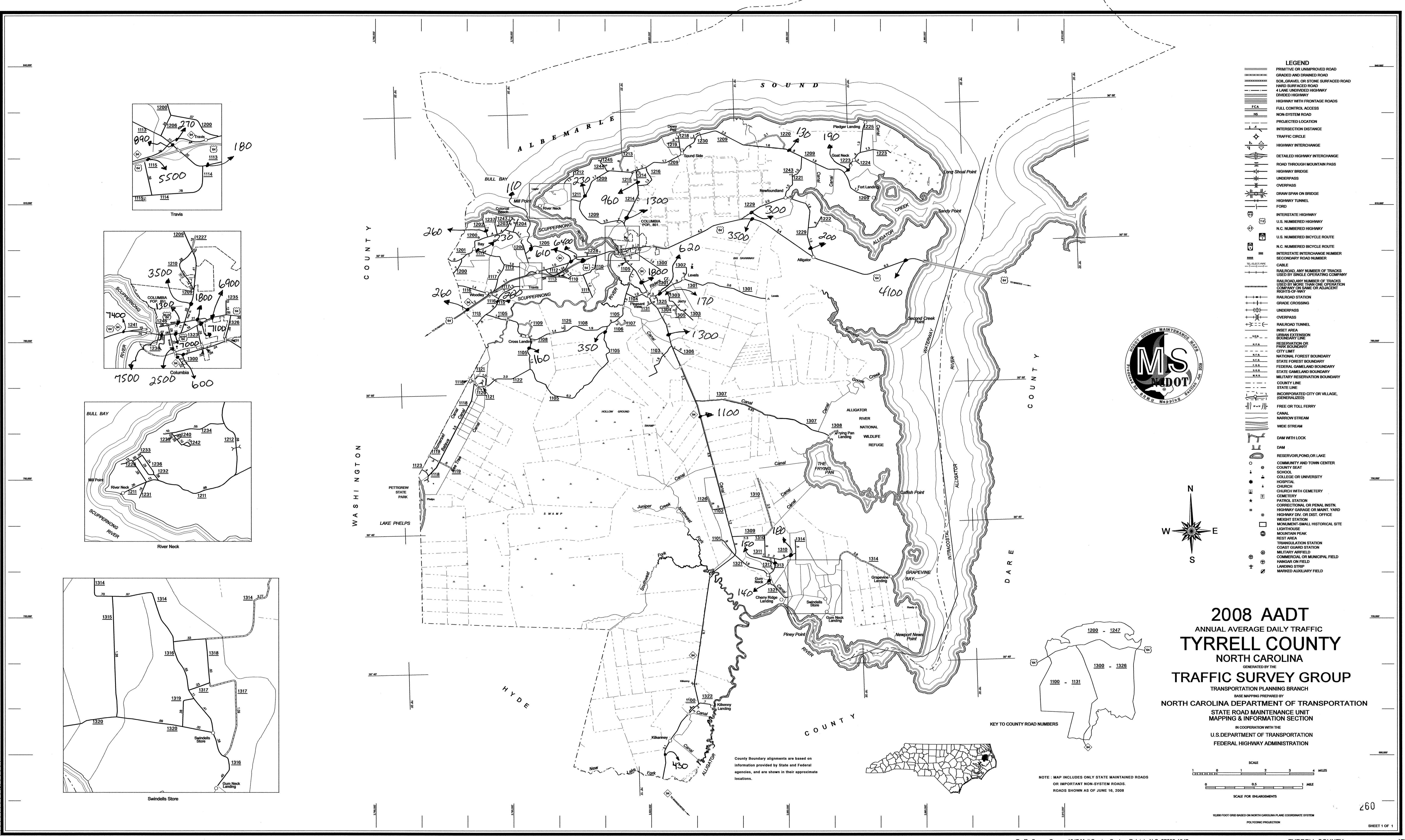


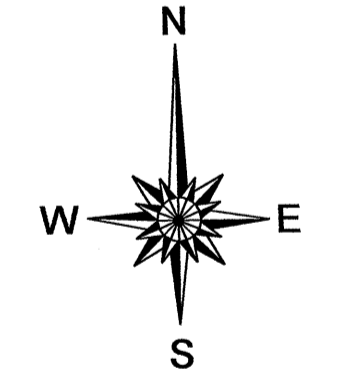
Disclaimer: The IMG Unit's goal is to provide the most accurate information as possible, the magnitude of the data prevents any guarantee of accuracy or completeness. If you find any information that is incorrect, please send your request to the IMG Unit.

TYRRELL  
 COUNTY OF TYRRELL AREA, MAP  
 COUNTY OF TYRRELL, NORTH CAROLINA  
 N.C. DEPARTMENT OF TRANSPORTATION  
 STATE ROAD MAINTENANCE UNIT  
 ADDRESS:  
 11000 FIVE STAR AVENUE, SUITE 100  
 RALEIGH, N.C. 27615

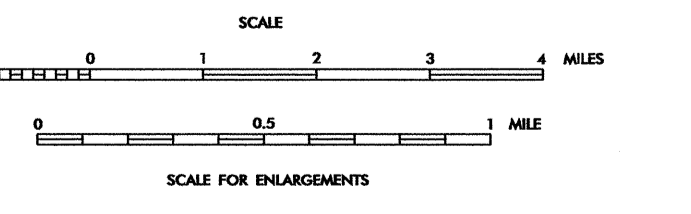
REVISED  
 1/16/02 MSG  
 3/17/03 MSG  
 3/19/03 MSG  
 7/7/03 MSG  
 11/17/03 MSG  
 5/21/04 MSG  
 7/7/04 MSG  
 1/20/05 MSG  
 8/6/06 LO  
 10/21/06 LO  
 07/20/08 BDC



- LEGEND**
- PRIMITIVE OR UNSURFACED ROAD
  - GRADED AND DRAINED ROAD
  - SOIL, GRAVEL OR STONE SURFACED ROAD
  - HARD SURFACED ROAD
  - 4 LANE UNDIVIDED HIGHWAY
  - DIVIDED HIGHWAY
  - HIGHWAY WITH FRONTAGE ROADS
  - FCA
  - FULL CONTROL ACCESS
  - NON-SYSTEM ROAD
  - PROJECTED LOCATION
  - INTERSECTION DISTANCE
  - TRAFFIC CIRCLE
  - HIGHWAY INTERCHANGE
  - DETAILED HIGHWAY INTERCHANGE
  - ROAD THROUGH MOUNTAIN PASS
  - HIGHWAY BRIDGE
  - UNDERPASS
  - OVERPASS
  - DRAW SPAN ON BRIDGE
  - HIGHWAY TUNNEL
  - FORD
  - INTERSTATE HIGHWAY
  - U.S. NUMBERED HIGHWAY
  - N.C. NUMBERED HIGHWAY
  - U.S. NUMBERED BICYCLE ROUTE
  - N.C. NUMBERED BICYCLE ROUTE
  - INTERSTATE INTERCHANGE NUMBER
  - SECONDARY ROAD NUMBER
  - CABLE
  - RAILROAD ANY NUMBER OF TRACKS USED BY SINGLE OPERATING COMPANY
  - RAILROAD ANY NUMBER OF TRACKS USED BY MORE THAN ONE OPERATING COMPANY ON SAME OR ADJACENT RIGHTS-OF-WAY
  - RAILROAD STATION
  - GRADE CROSSING
  - UNDERPASS
  - OVERPASS
  - RAILROAD TUNNEL
  - INSET AREA
  - URBAN EXTENSION BOUNDARY LINE
  - RESERVATION OR PARK BOUNDARY
  - CITY LIMIT
  - NATIONAL FOREST BOUNDARY
  - STATE FOREST BOUNDARY
  - FEDERAL GAMELAND BOUNDARY
  - STATE GAMELAND BOUNDARY
  - MILITARY RESERVATION BOUNDARY
  - COUNTY LINE
  - STATE LINE
  - INCORPORATED CITY OR VILLAGE, (GENERALIZED)
  - FREE OR TOLL FERRY
  - RAIL
  - NARROW STREAM
  - WIDE STREAM
  - DAM WITH LOCK
  - DAM
  - RESERVOIR, POND, OR LAKE
  - COMMUNITY AND TOWN CENTER
  - COUNTY SEAT
  - SCHOOL
  - COLLEGE OR UNIVERSITY
  - HOSPITAL
  - CHURCH
  - CHURCH WITH CEMETERY
  - CEMETERY
  - PATROL STATION
  - CORRECTIONAL OR PENAL INSTN.
  - HIGHWAY GARAGE OR MAINT. YARD
  - HIGHWAY DIV. OR DIST. OFFICE
  - WEIGHT STATION
  - MONUMENT-SMALL HISTORICAL SITE
  - LIGHTHOUSE
  - MOUNTAIN PEAK
  - REST AREA
  - TRIANGULATION STATION
  - COAST GUARD STATION
  - MILITARY AIRFIELD
  - COMMERCIAL OR MUNICIPAL FIELD
  - HANGAR ON FIELD
  - LANDING STRIP
  - MARKED AUXILIARY FIELD



**2008 AADT**  
 ANNUAL AVERAGE DAILY TRAFFIC  
**TYRRELL COUNTY**  
 NORTH CAROLINA  
 GENERATED BY THE  
**TRAFFIC SURVEY GROUP**  
 TRANSPORTATION PLANNING BRANCH  
 BASE MAPS PREPARED BY  
 NORTH CAROLINA DEPARTMENT OF TRANSPORTATION  
 STATE ROAD MAINTENANCE UNIT  
 MAPPING & INFORMATION SECTION  
 IN COOPERATION WITH THE  
 U.S. DEPARTMENT OF TRANSPORTATION  
 FEDERAL HIGHWAY ADMINISTRATION



NOTE: MAP INCLUDES ONLY STATE MAINTAINED ROADS OR IMPORTANT NON-SYSTEM ROADS. ROADS SHOWN AS OF JUNE 16, 2008