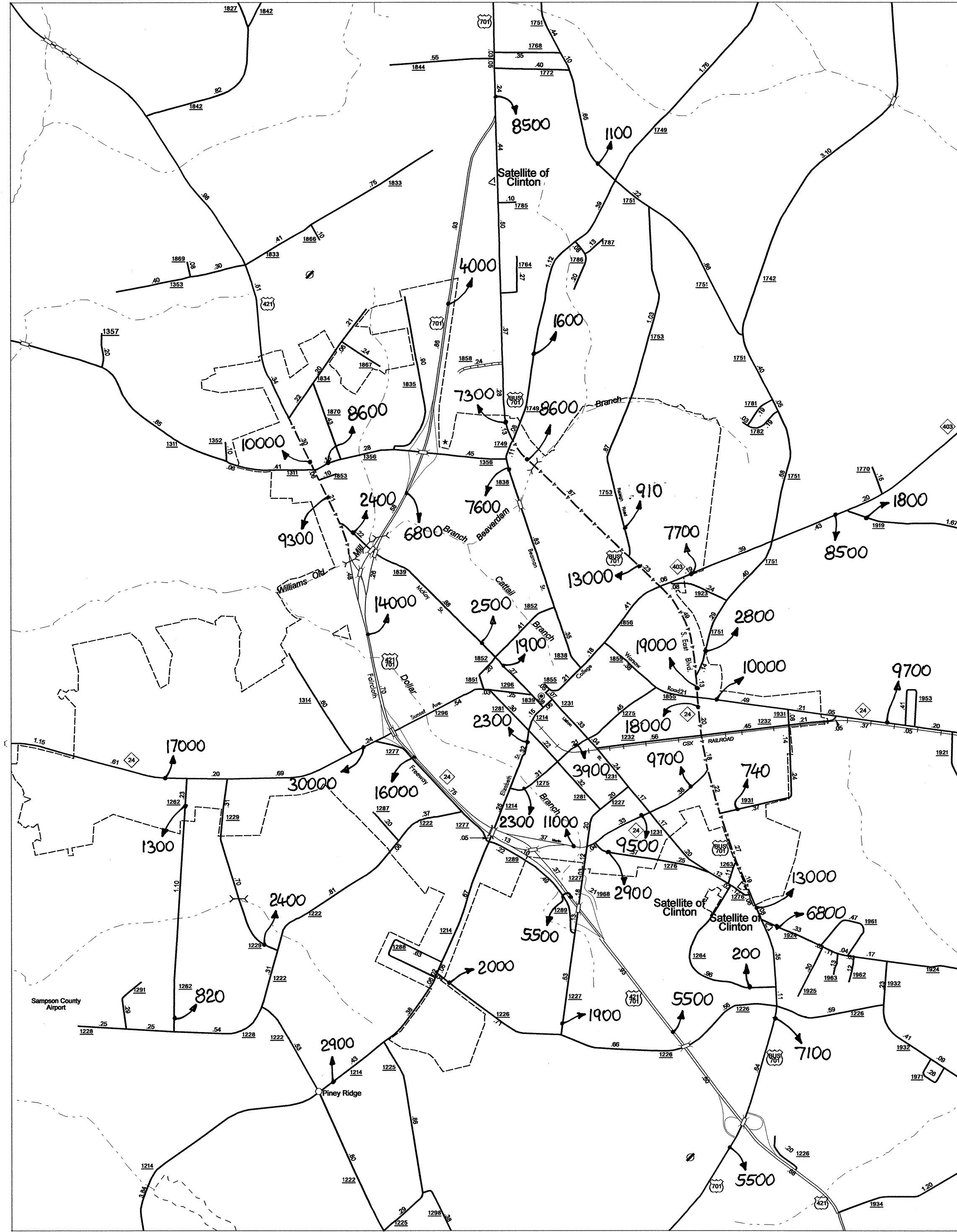
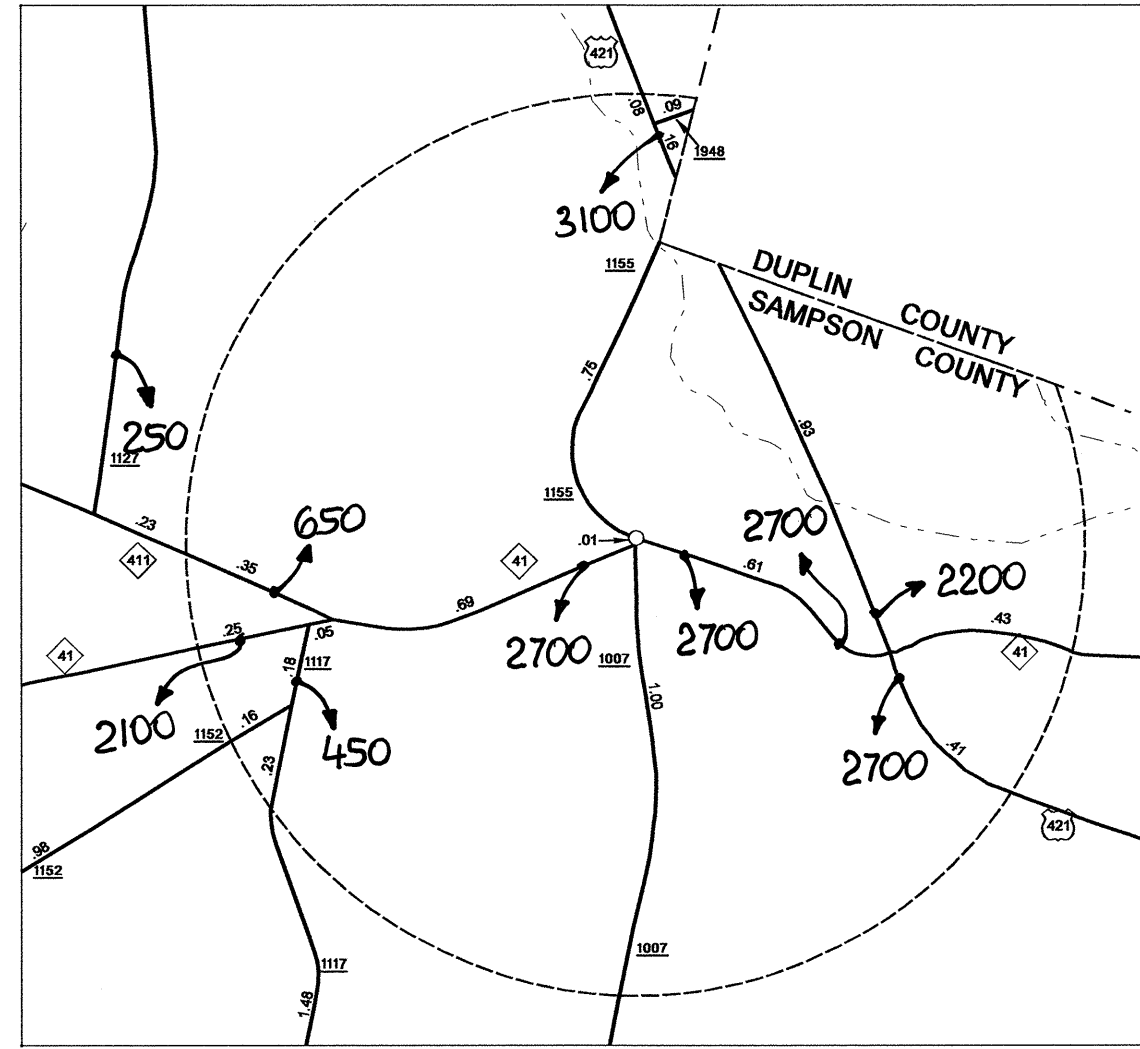


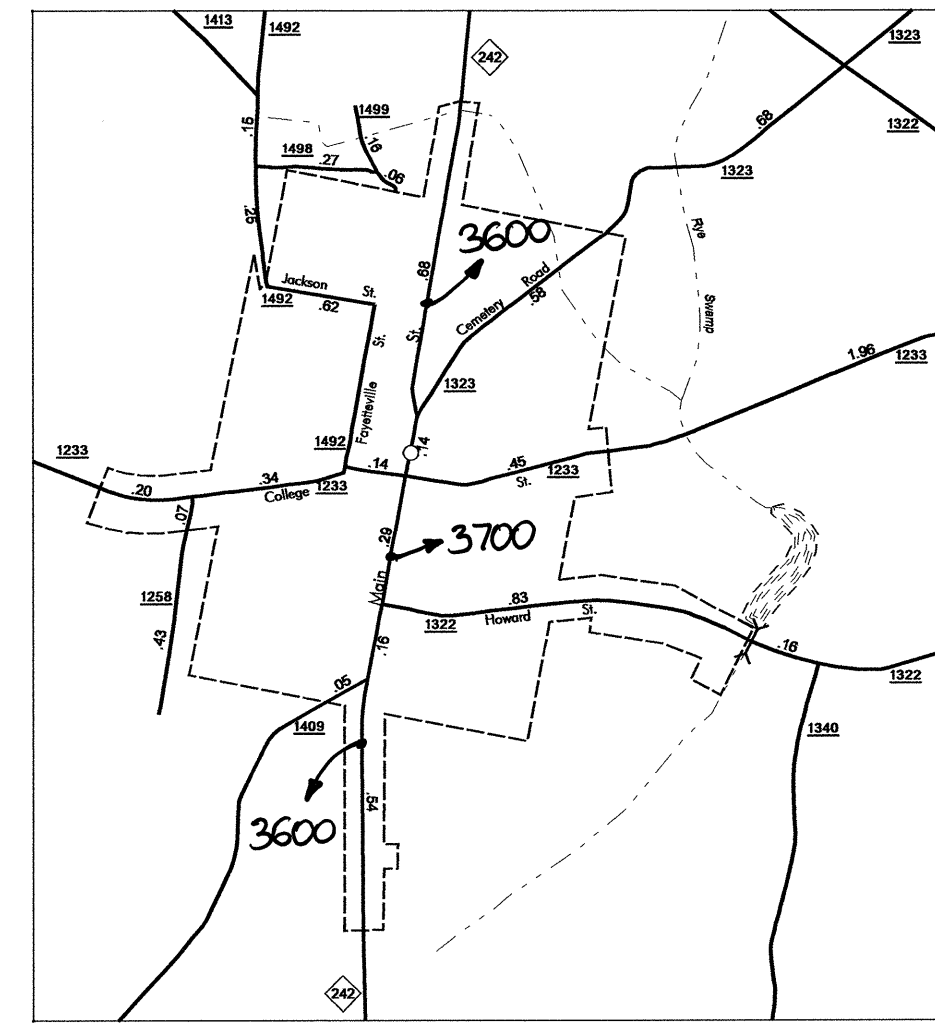
Disclaimer: The MG Units goal is to provide the most accurate information as possible, the magnitude of the data prevents any guarantee of accuracy or completeness. If you find any information that is incorrect, please send your request to the IMG Unit.



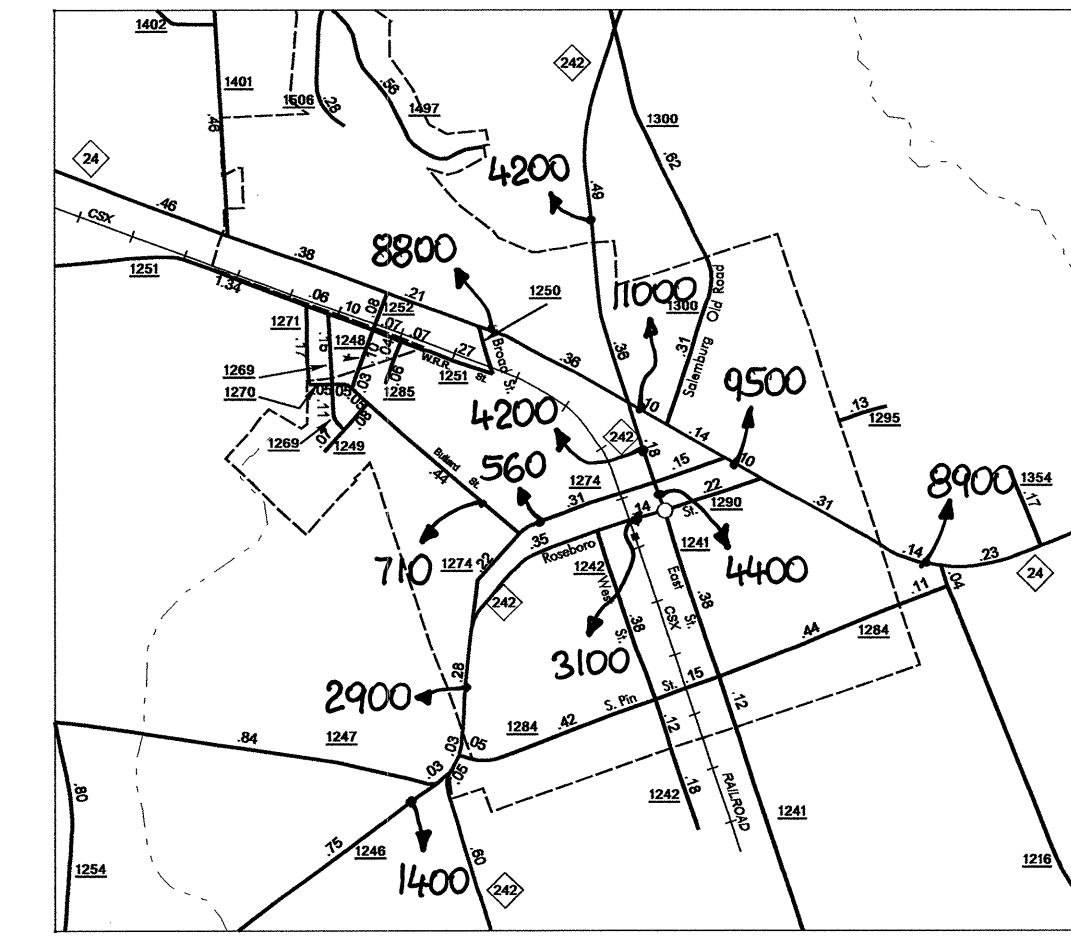
Clinton
Pop. 9,484



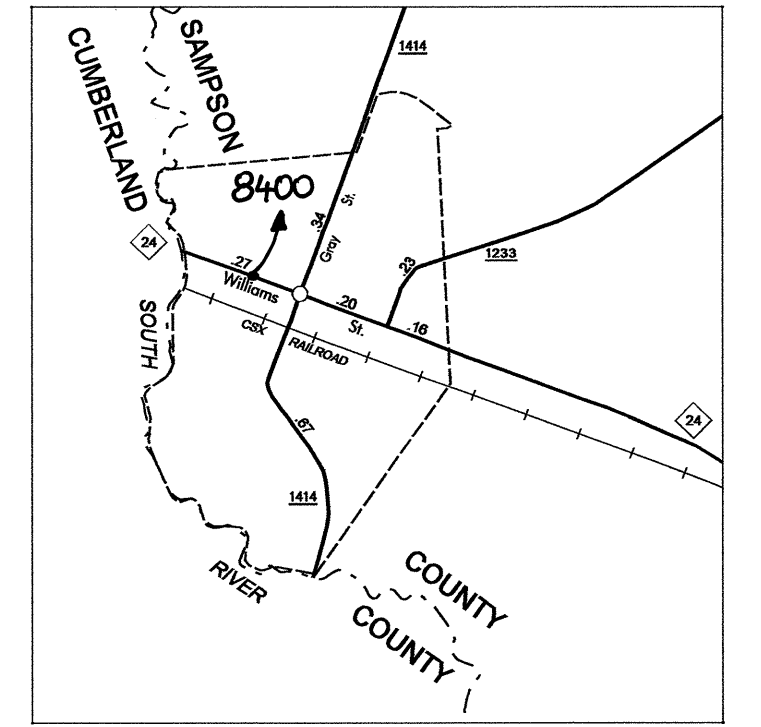
Harrells
Pop. 187



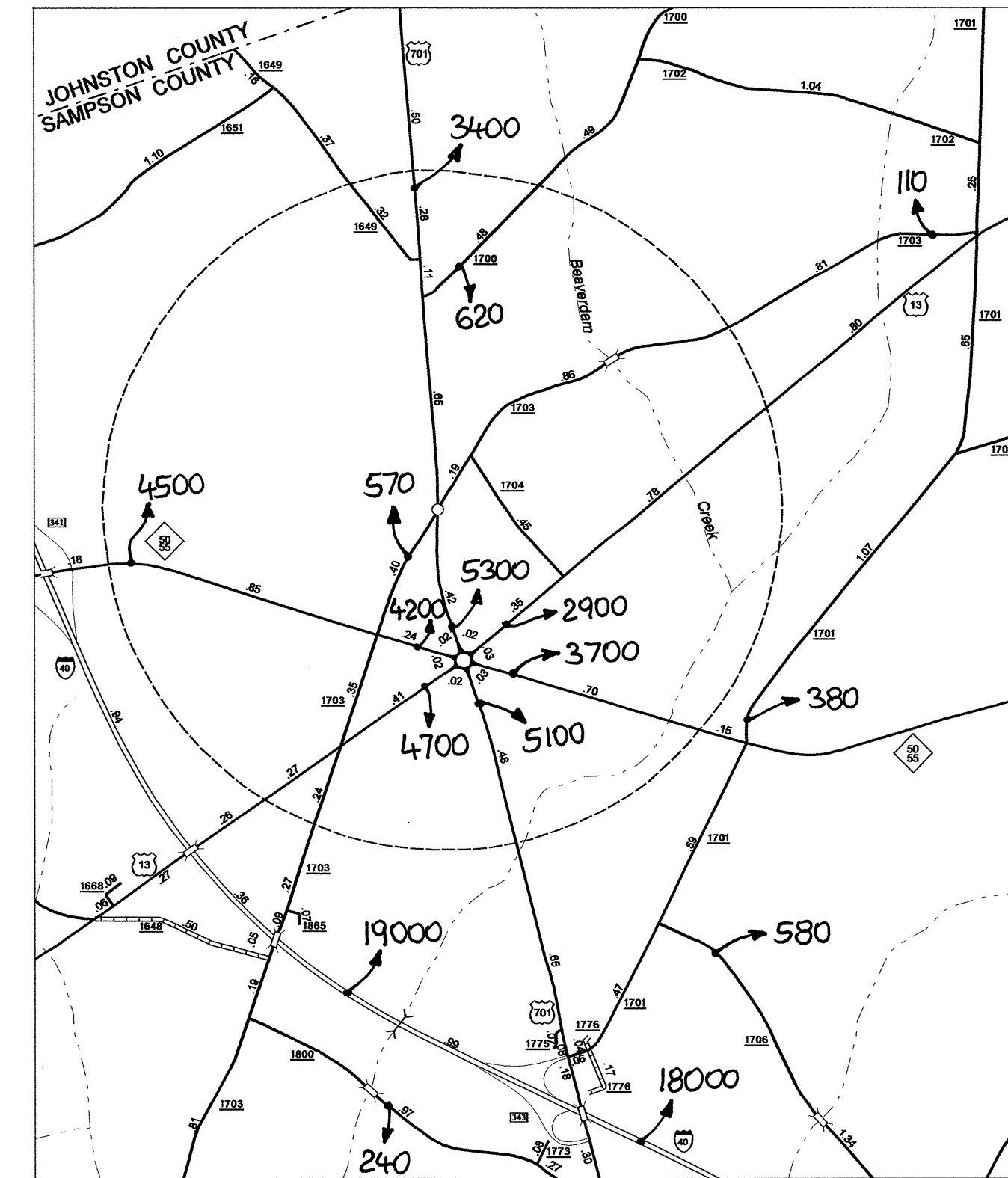
Salemburg
Pop. 416



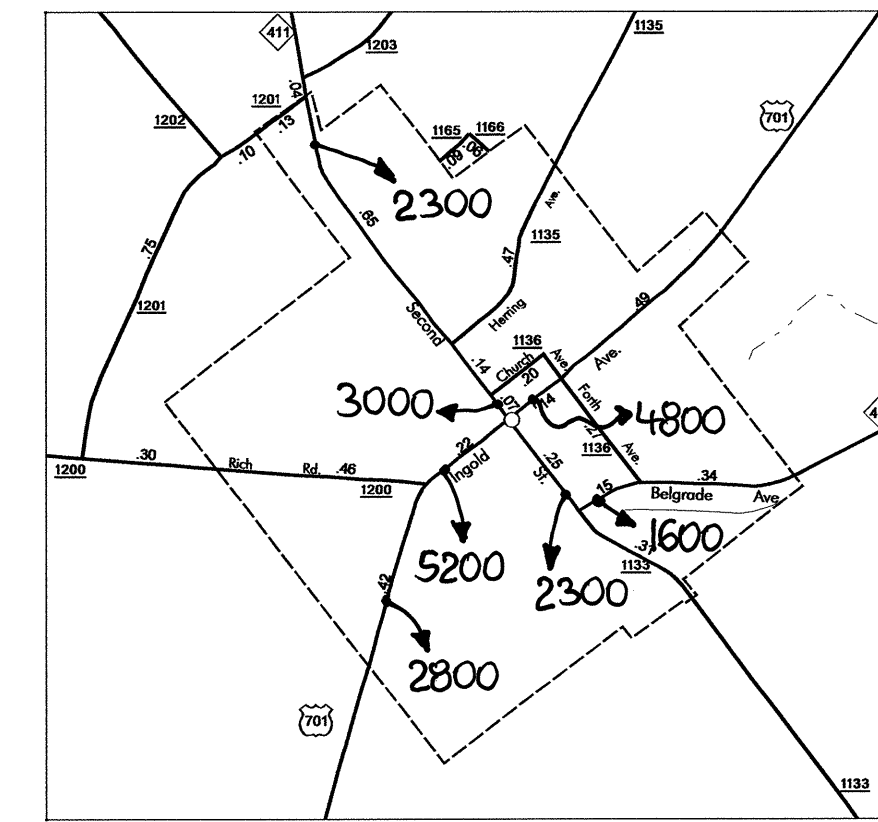
Roseboro
Pop. 1,521



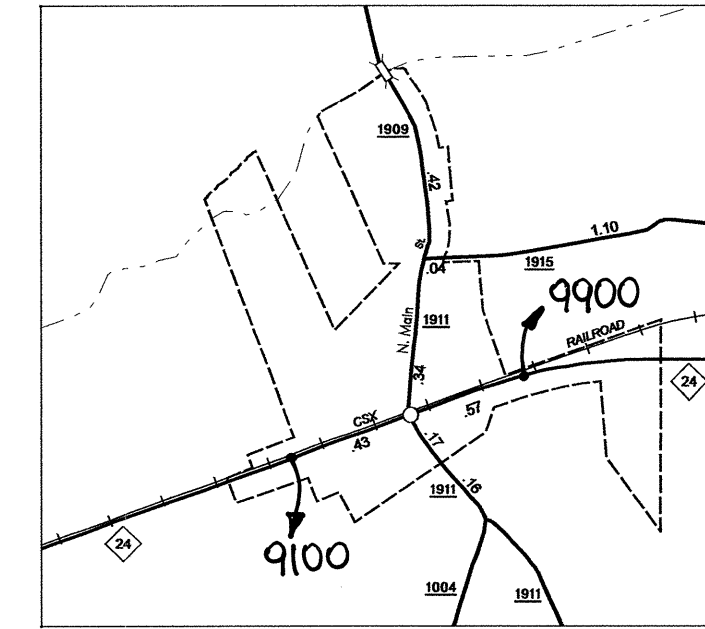
Aubysville
Pop. 206



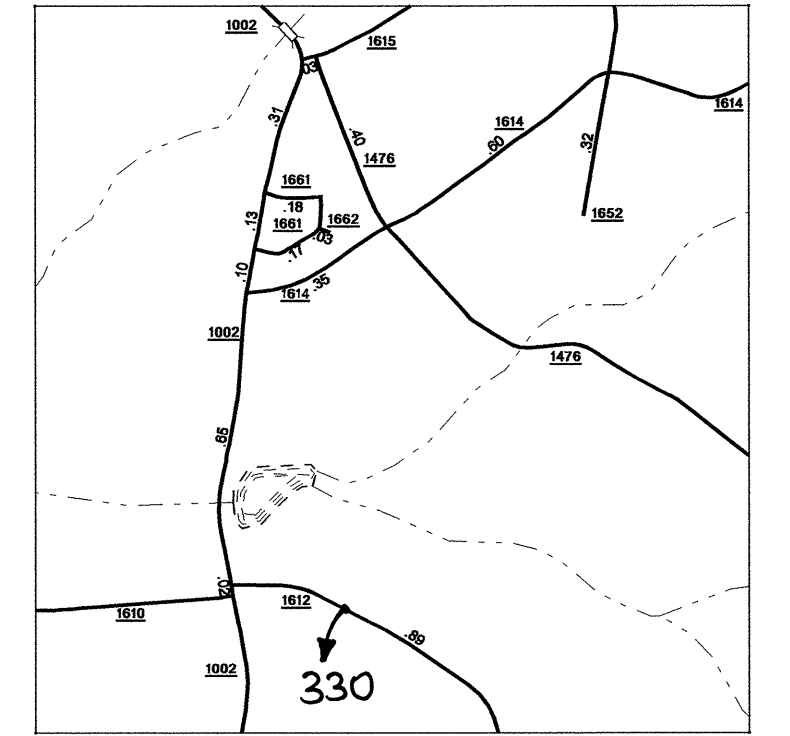
Newton Grove
Pop. 545



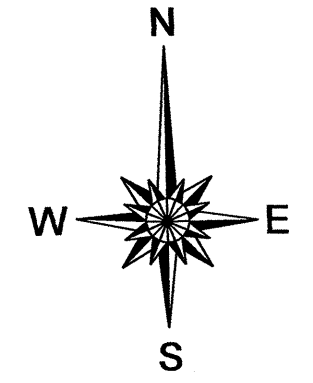
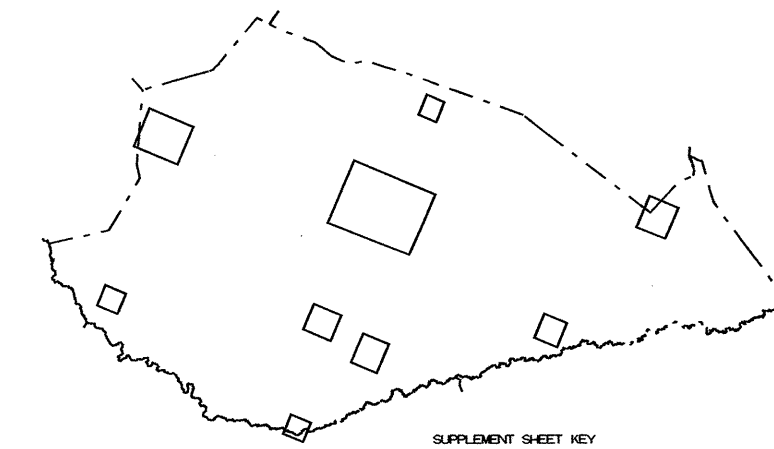
Garland
Pop. 794



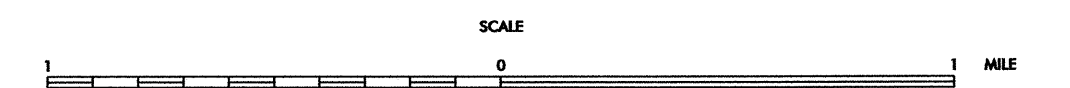
Turkey
Pop. 293



Inset 1



2008 AADT
ANNUAL AVERAGE DAILY TRAFFIC
SAMPSON COUNTY
NORTH CAROLINA
GENERATED BY THE
TRAFFIC SURVEY GROUP
TRANSPORTATION PLANNING BRANCH
BASE MAPPING PREPARED BY
NORTH CAROLINA DEPARTMENT OF TRANSPORTATION
STATE ROAD MAINTENANCE UNIT
MAPPING & INFORMATION SECTION
IN COOPERATION WITH THE
U.S. DEPARTMENT OF TRANSPORTATION
FEDERAL HIGHWAY ADMINISTRATION



16200 FOOT GRID BASED ON NORTH CAROLINA PLANE COORDINATE SYSTEM
POLYCONIC PROJECTION

REVISIONS
DATE
BY
DESCRIPTION

SUP-1

SAMPSON