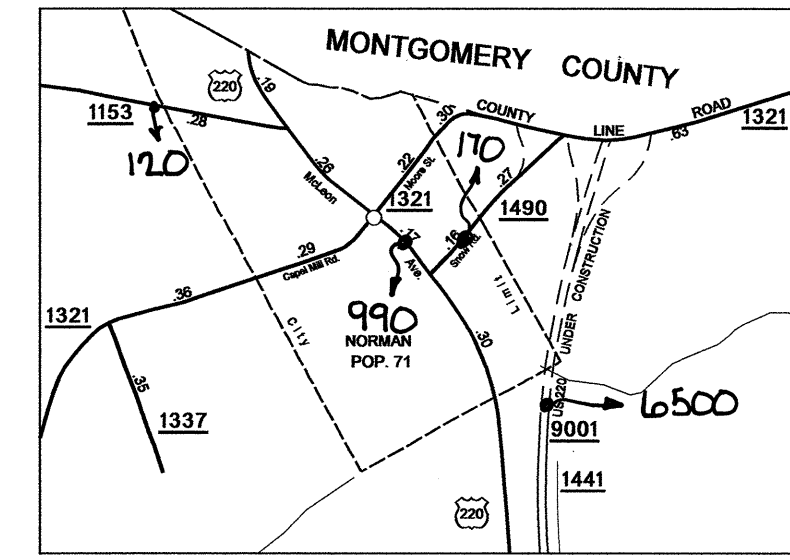
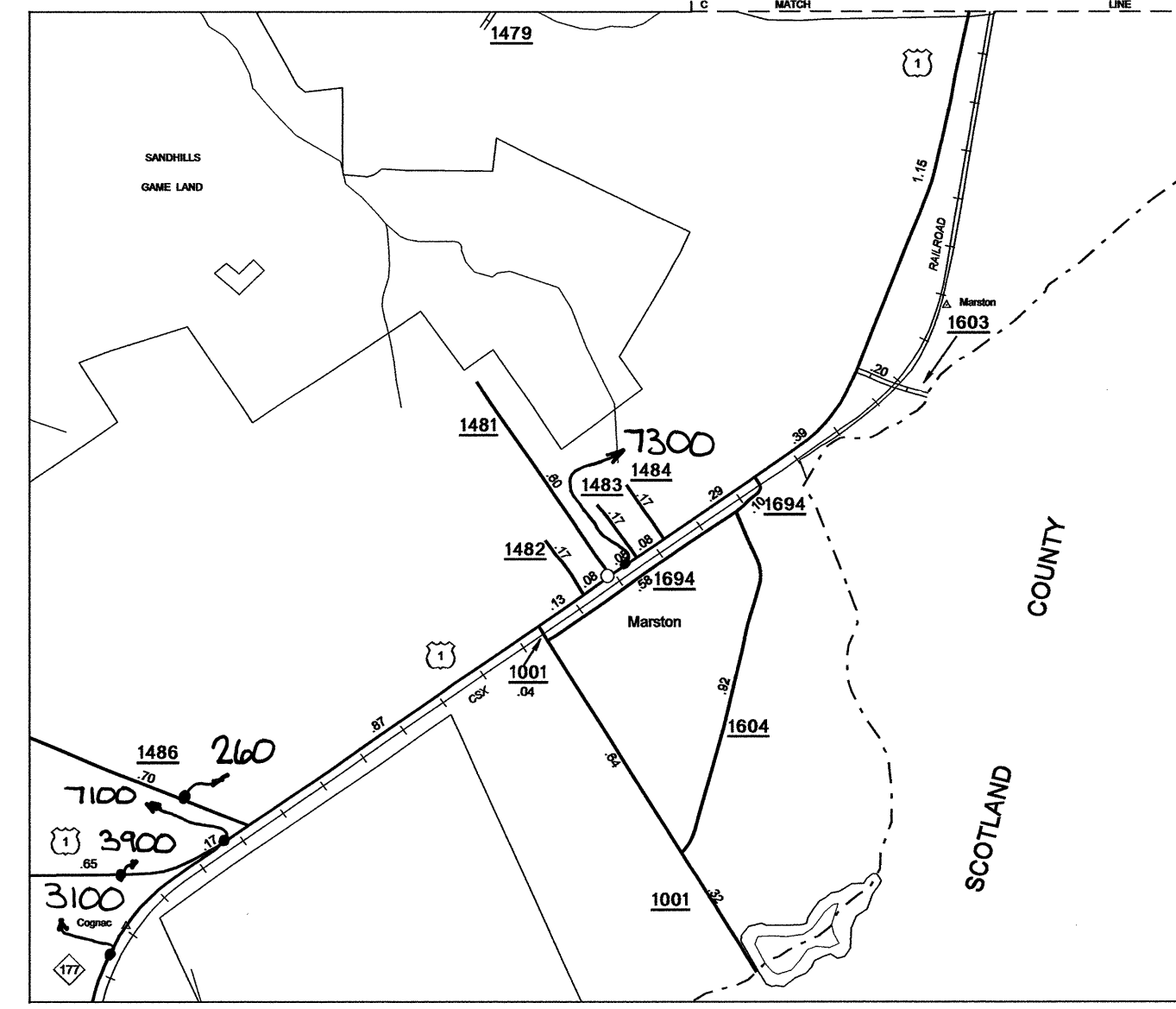
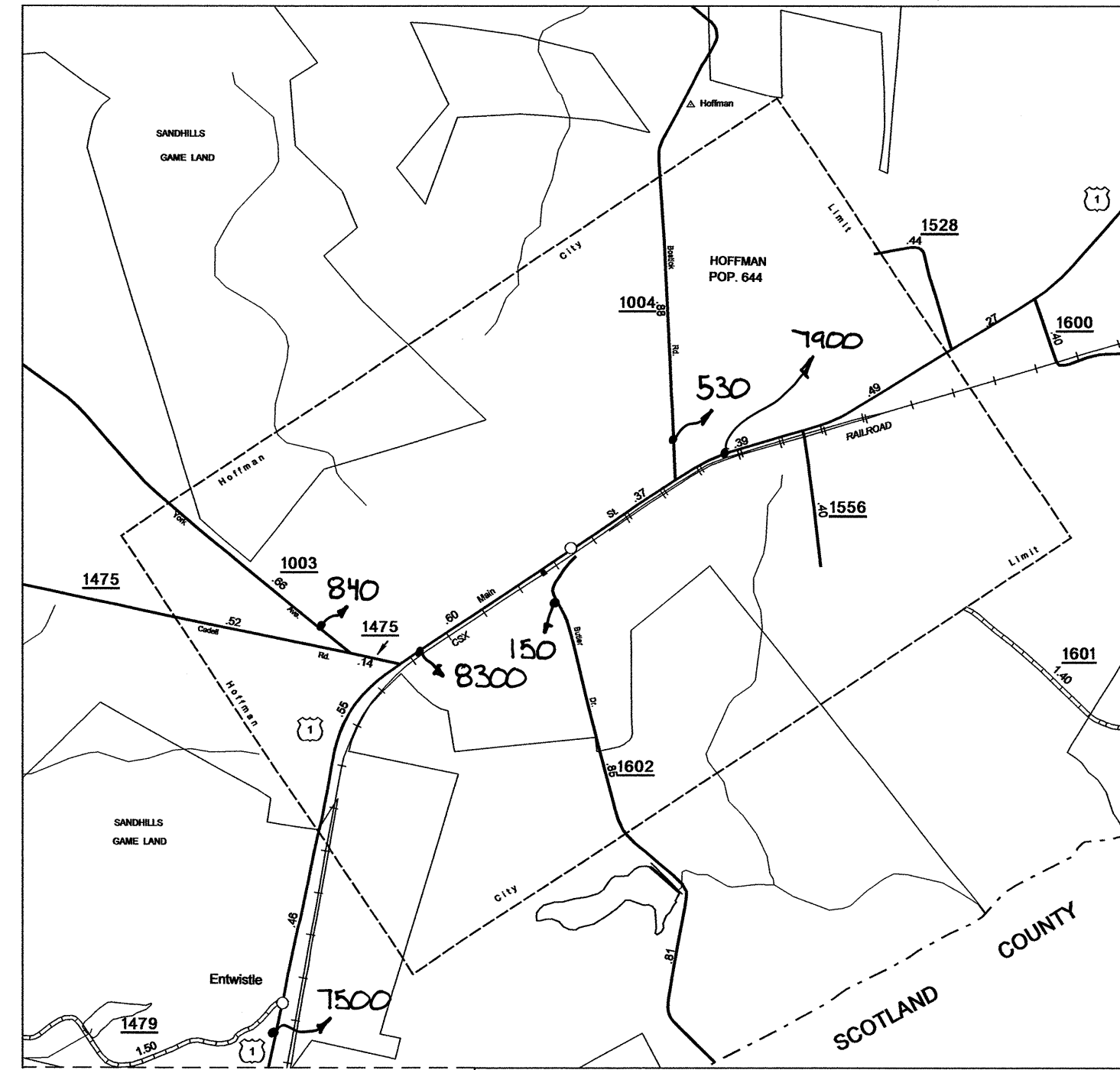
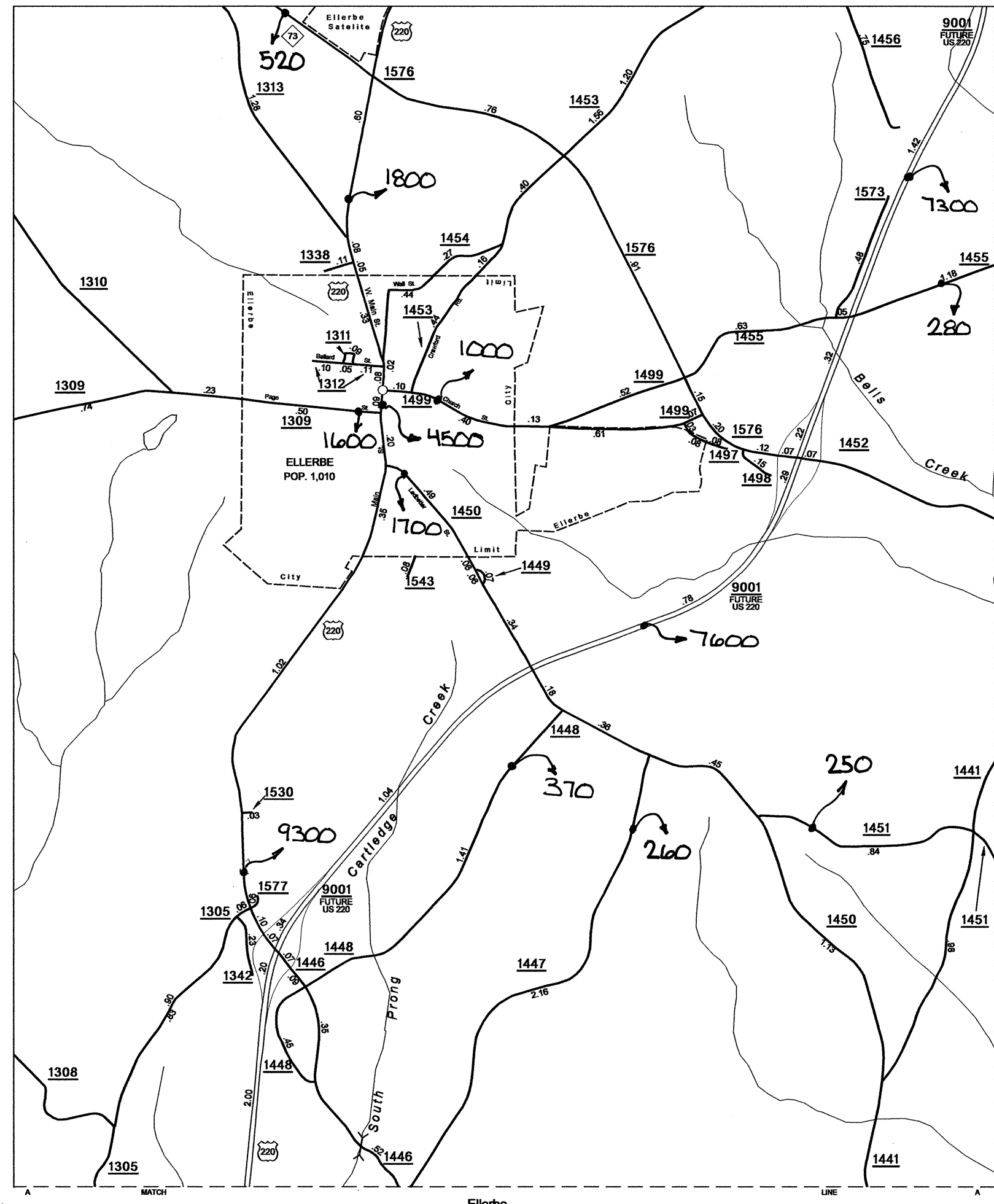
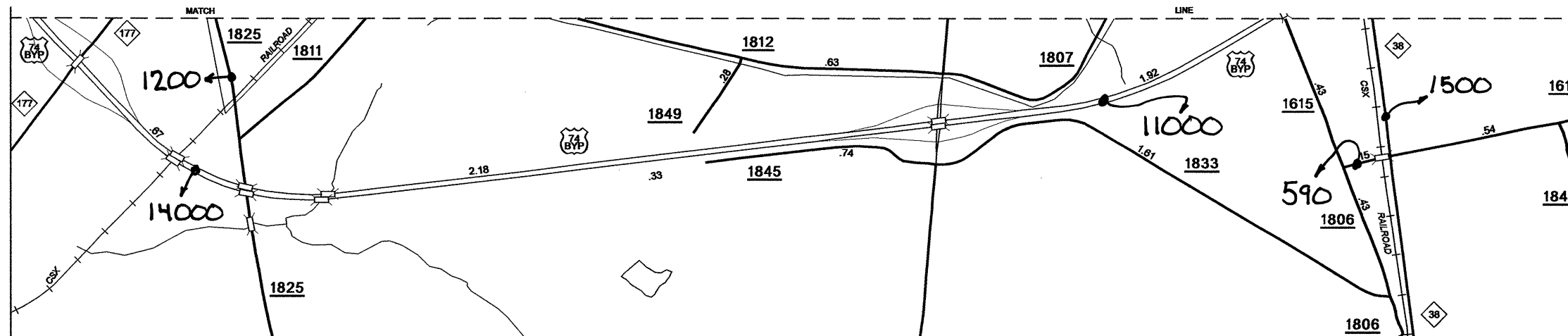


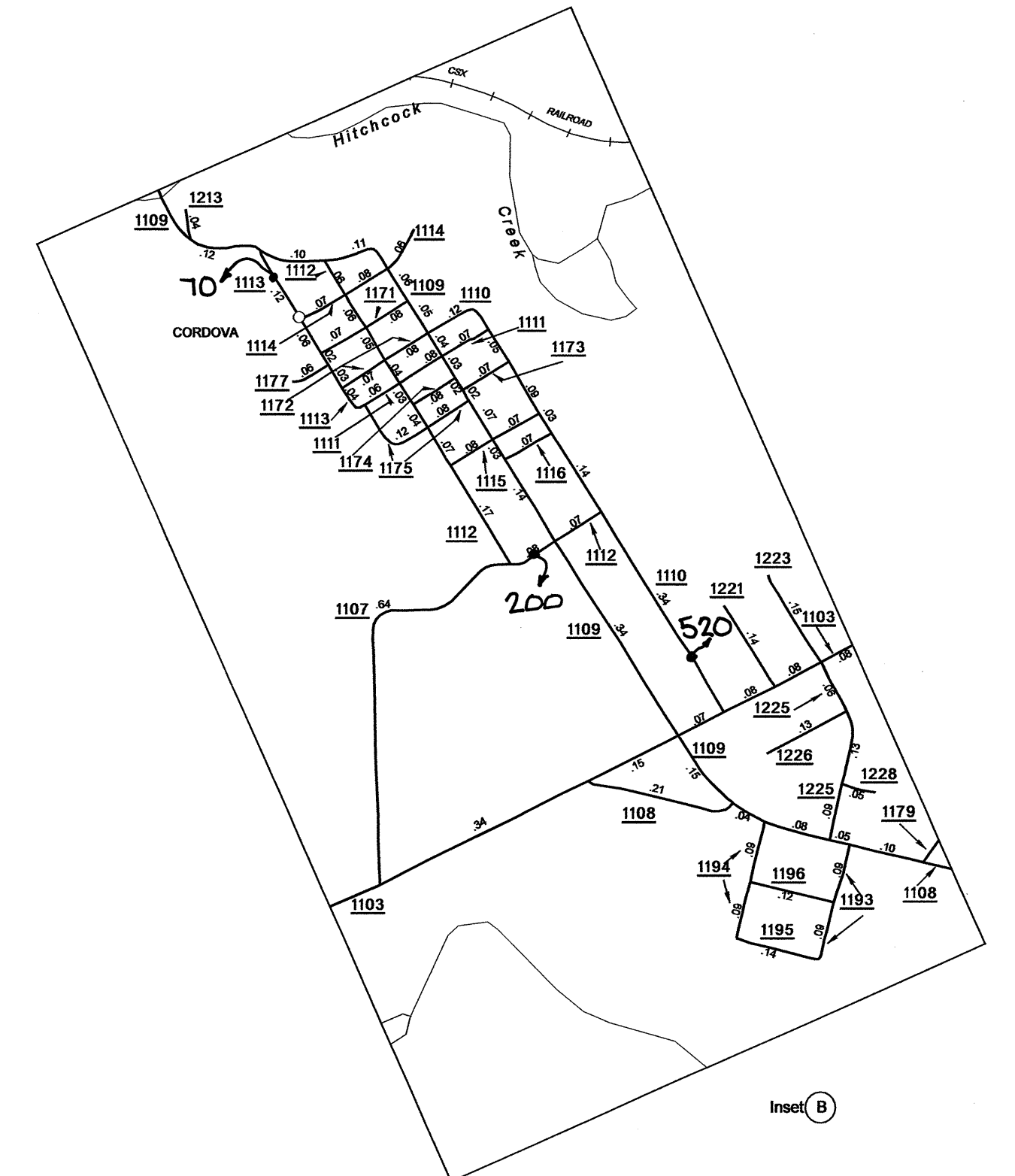
Disclaimer: The IMG Units goal is to provide the most accurate information as possible, the magnitude of the data prevents any guarantee of accuracy or completeness. If you find any information that is incorrect, please send your request to the IMG Unit.



Norman
Pop. 252

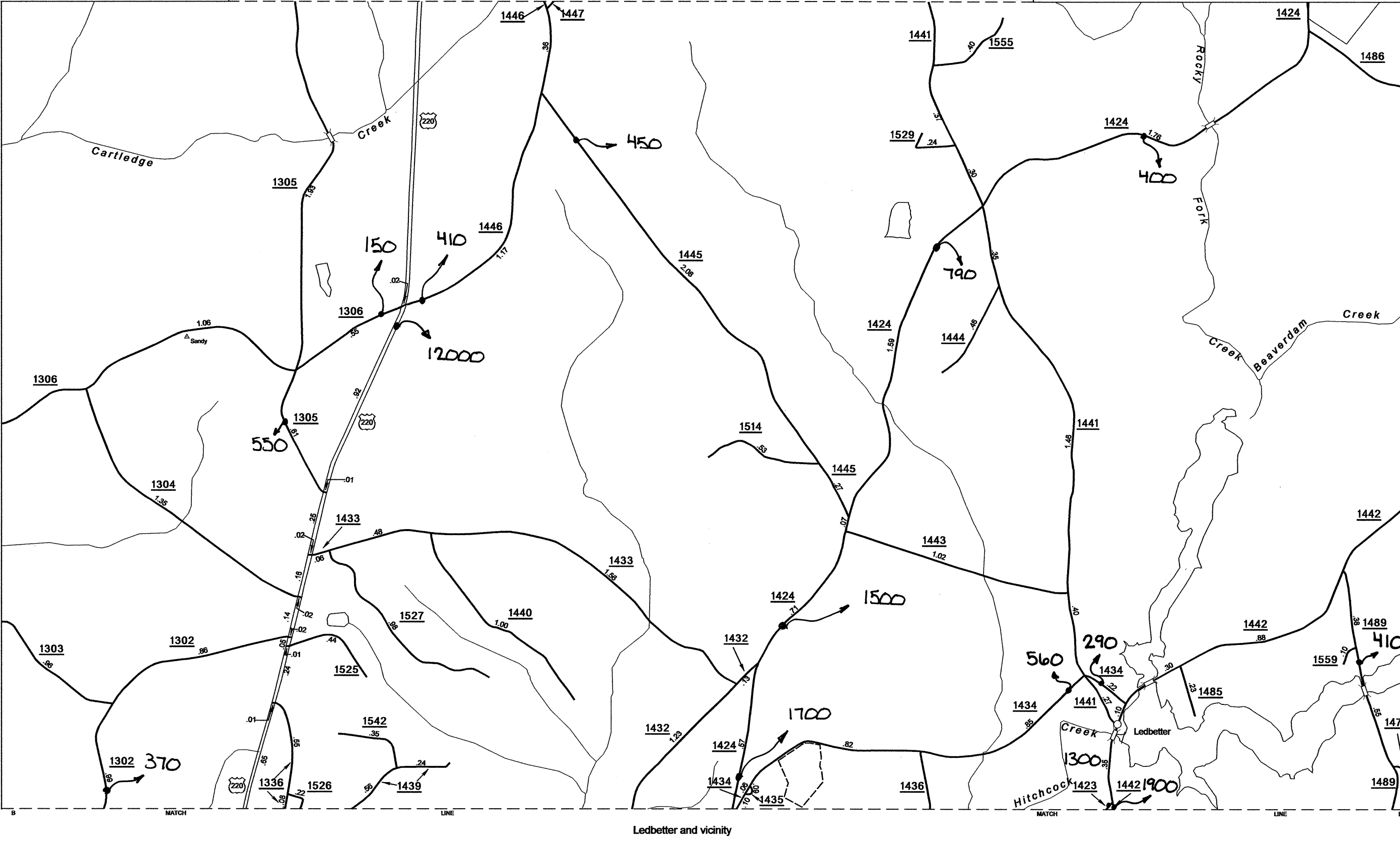


Southern Hamlet Area

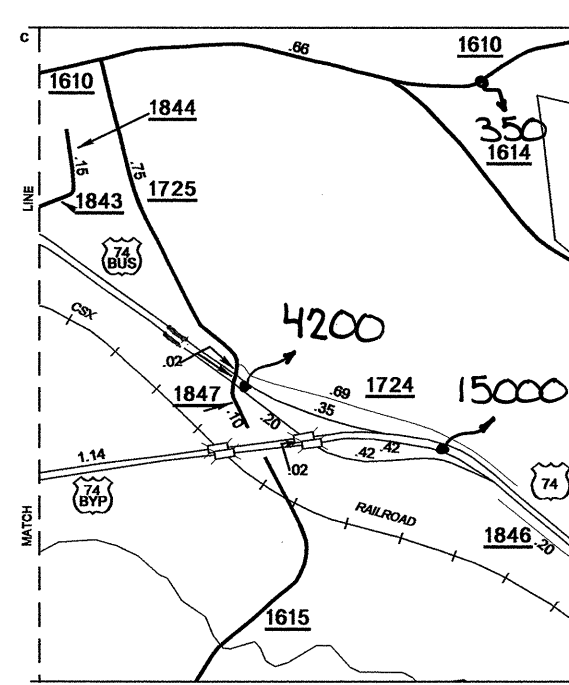


Inset B

SCALE 0 0.5 MILE
1 : 8



Ledbetter and vicinity



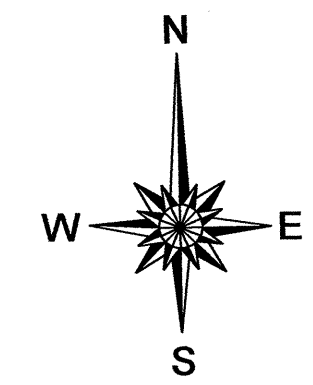
Interstate 74 Business and 74 Bypass Interchange



2008 AADT

ANNUAL AVERAGE DAILY TRAFFIC
RICHMOND COUNTY
 NORTH CAROLINA
 GENERATED BY THE
TRAFFIC SURVEY GROUP

TRANSPORTATION PLANNING BRANCH
 BASE MAPPING PREPARED BY
 NORTH CAROLINA DEPARTMENT OF TRANSPORTATION
 STATE ROAD MAINTENANCE UNIT
 MAPPING & INFORMATION SECTION
 IN COOPERATION WITH THE
 U.S. DEPARTMENT OF TRANSPORTATION
 FEDERAL HIGHWAY ADMINISTRATION



SCALE 0 1 MILE
 POLYLINE PREPARATION

REVISIONS
 08/01/01 J.H.
 12/23/03 J.H.
 12/21/04 J.H.
 09/17/05 J.H.
 12/20/05 TRP
 08/08/08 TRP
 06/06/09 TRP
 4/7/09 RLN

SUP-2

RICHMOND