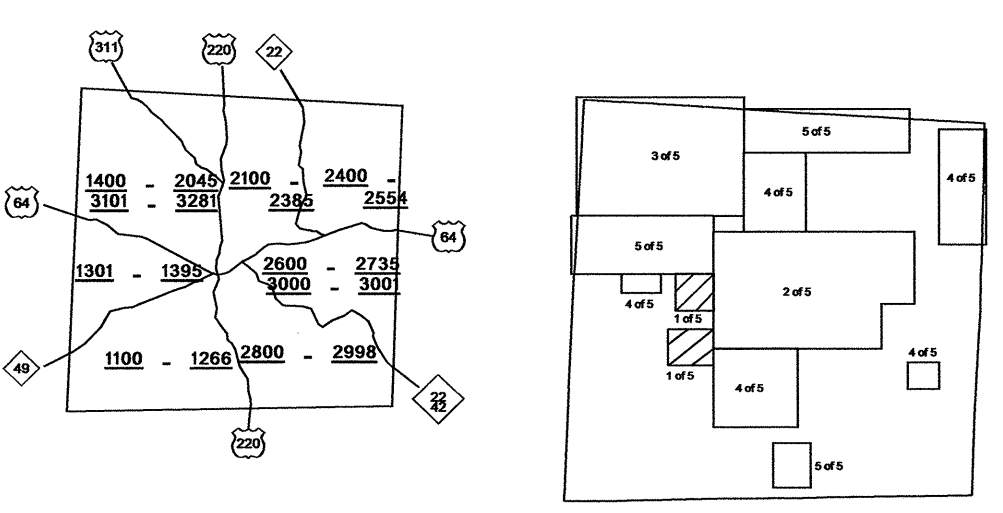
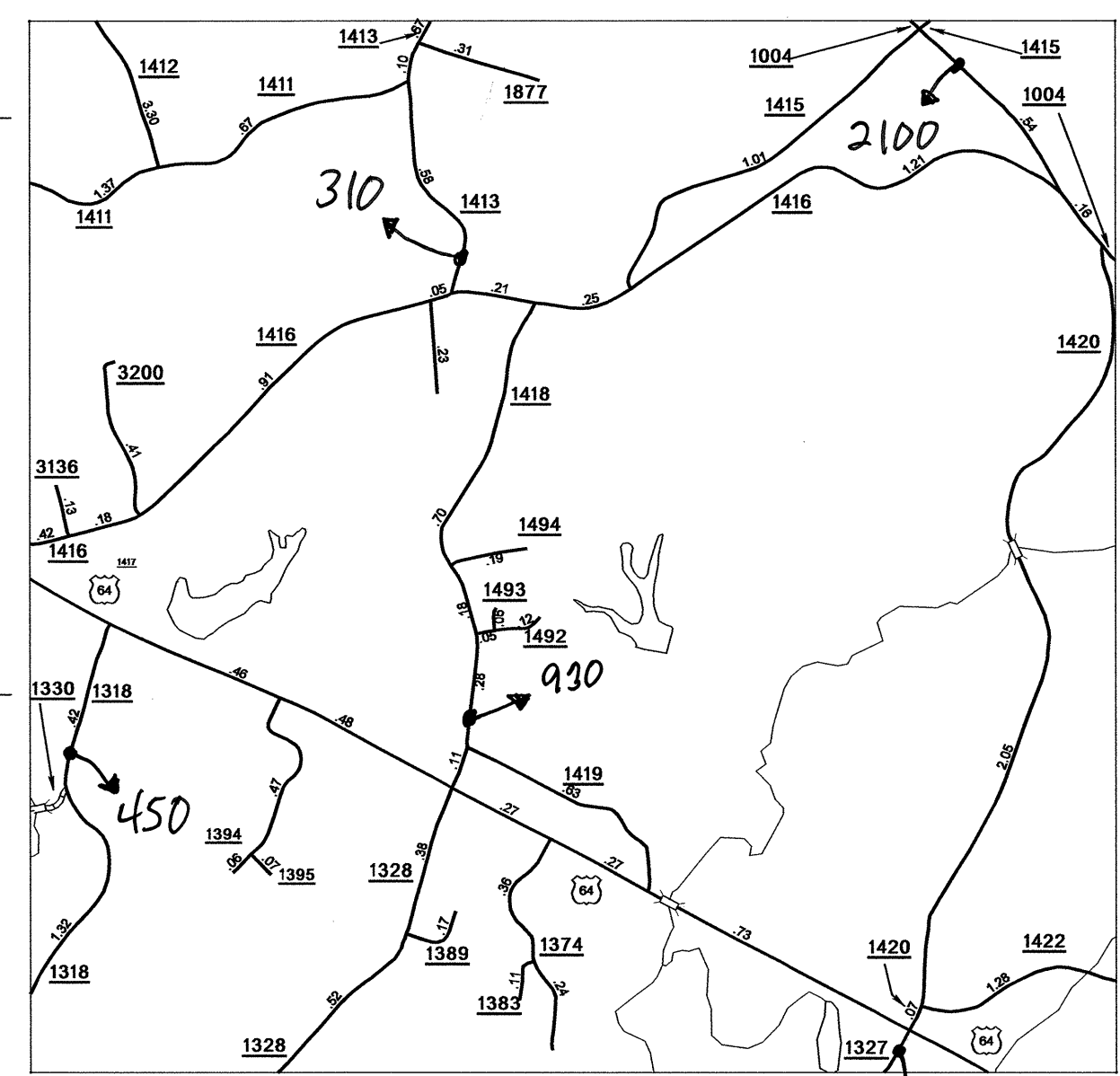
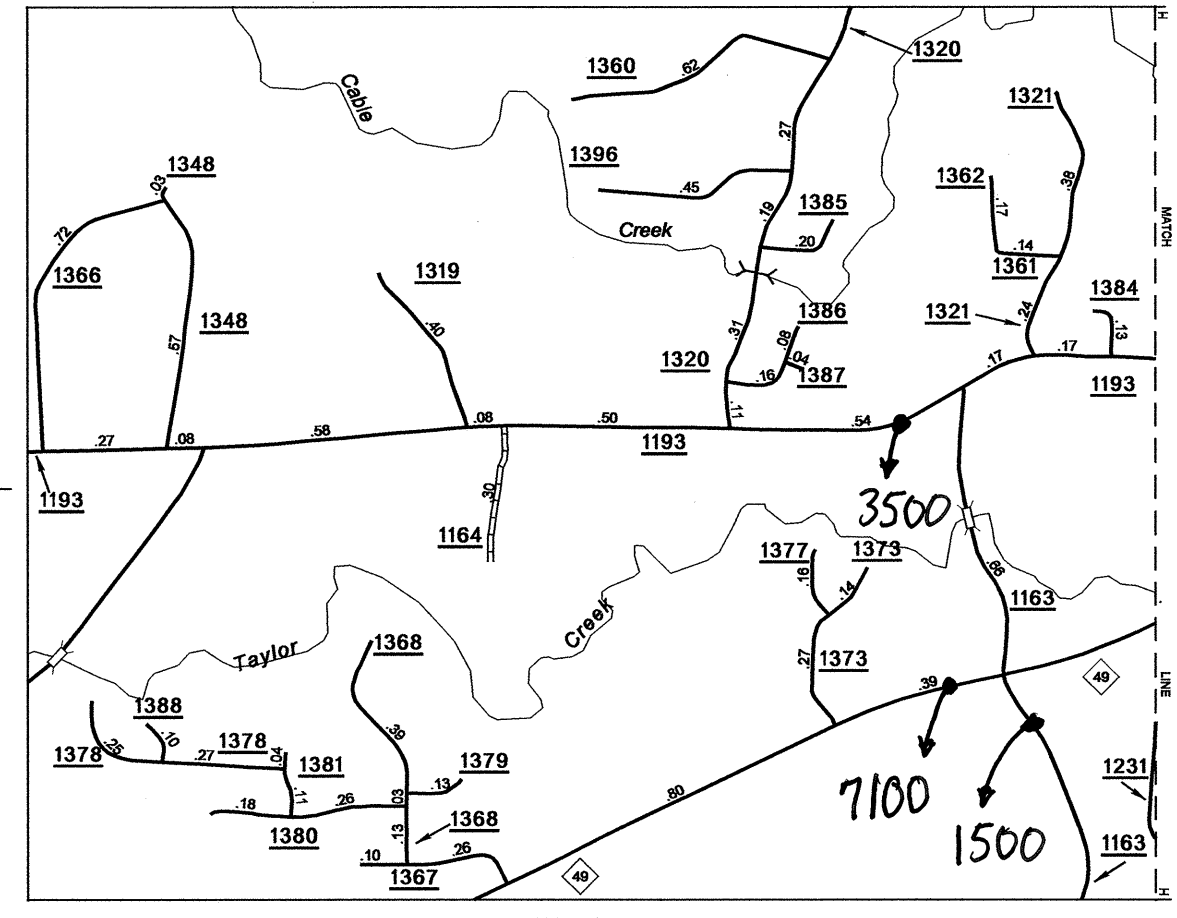
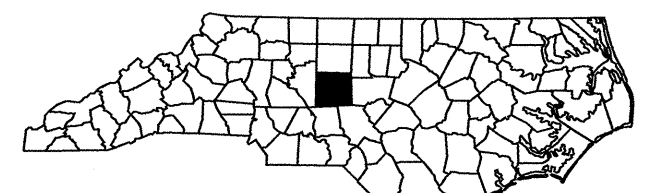


Disclaimer: The IMG Unit's goal is to provide the most accurate information as possible, the magnitude of the data prevents any guarantee of accuracy or completeness. If you find any information that is incorrect, please send your request to the IMG Unit.

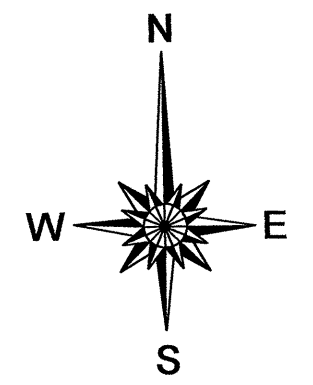
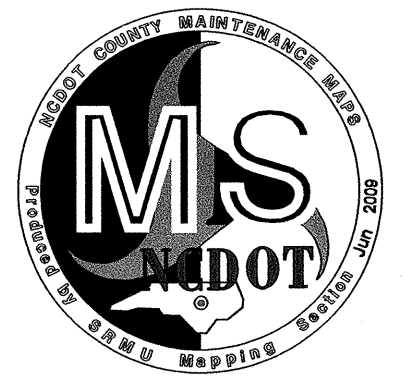
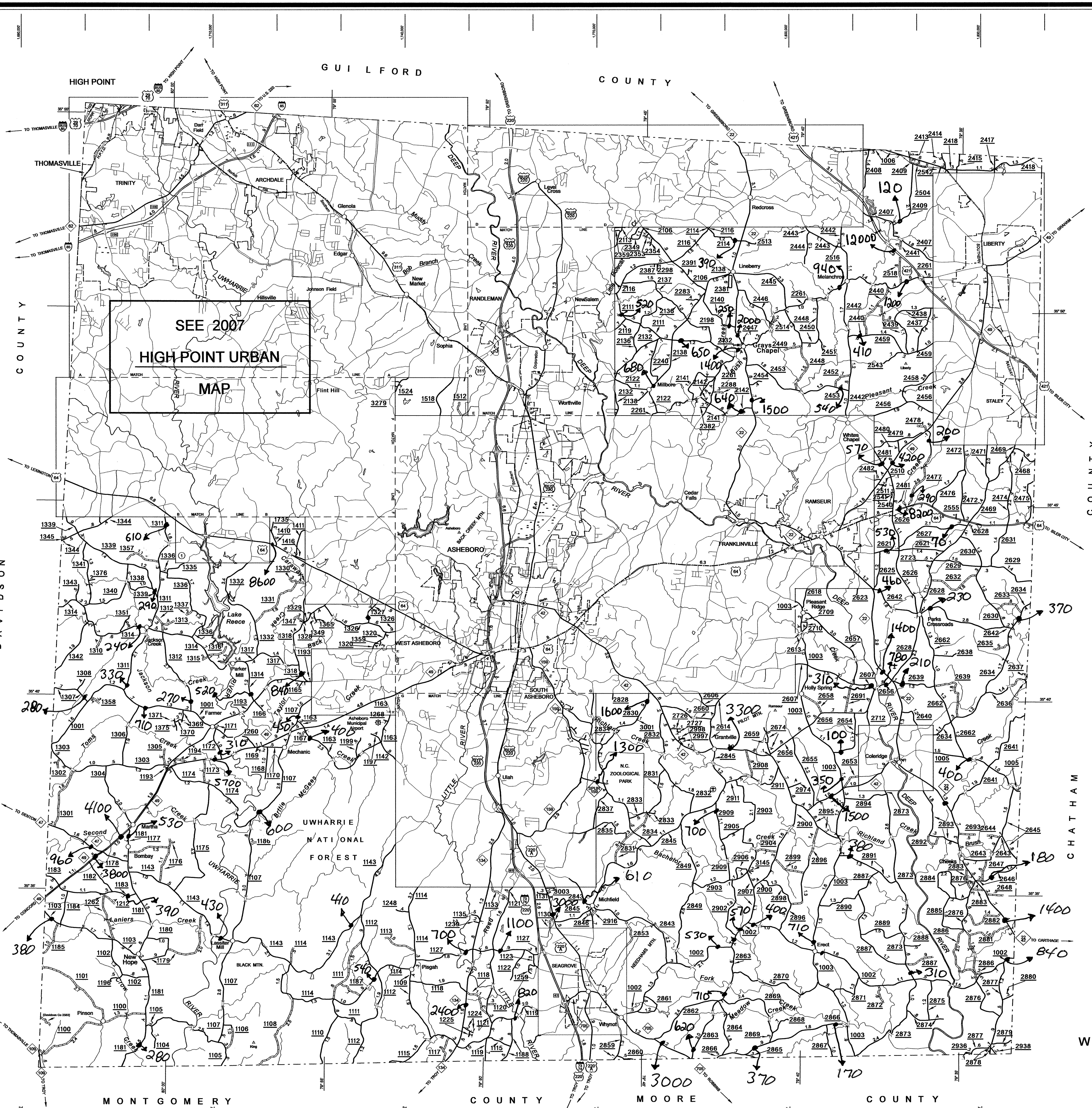


KEY TO COUNTY ROAD NUMBERS
Also Numbers 1001 - 1007



NOTE: MAP INCLUDES ONLY STATE MAINTAINED ROADS OR IMPORTANT NON-SYSTEM ROADS. ROADS SHOWN AS OF JUNE 24, 2008

County Boundary alignments are based on information provided by State and Federal agencies, and are shown in their approximate locations.



2008 AADT

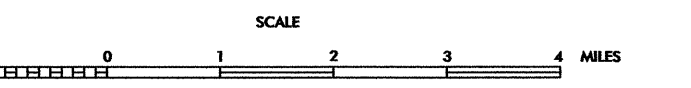
ANNUAL AVERAGE DAILY TRAFFIC

RANDOLPH COUNTY

NORTH CAROLINA

TRAFFIC SURVEY GROUP

GENERATED BY THE
TRANSPORTATION PLANNING BRANCH
BASE MAPS PREPARED BY
NORTH CAROLINA DEPARTMENT OF TRANSPORTATION
STATE ROAD MAINTENANCE UNIT
MAPPING & INFORMATION SECTION
IN COOPERATION WITH THE
U.S. DEPARTMENT OF TRANSPORTATION
FEDERAL HIGHWAY ADMINISTRATION



SCALE FOR ENLARGEMENTS
1000 FOOT GRID BASED ON NORTH CAROLINA PLANE COORDINATE SYSTEM
POLYCONIC PROJECTION

REVISIONS

201700	JCH
080007	JCH
120000	JCH
121703	JCH
111004	JCH
120606	JCH
120906	TRP
0900	TRP
020409	TRP