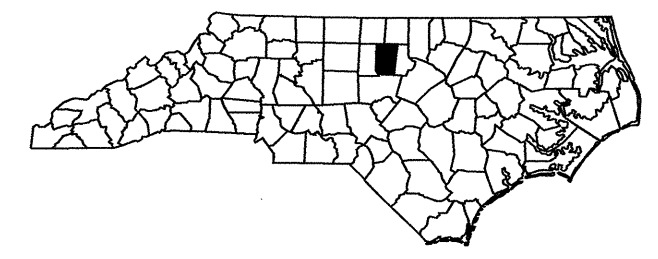
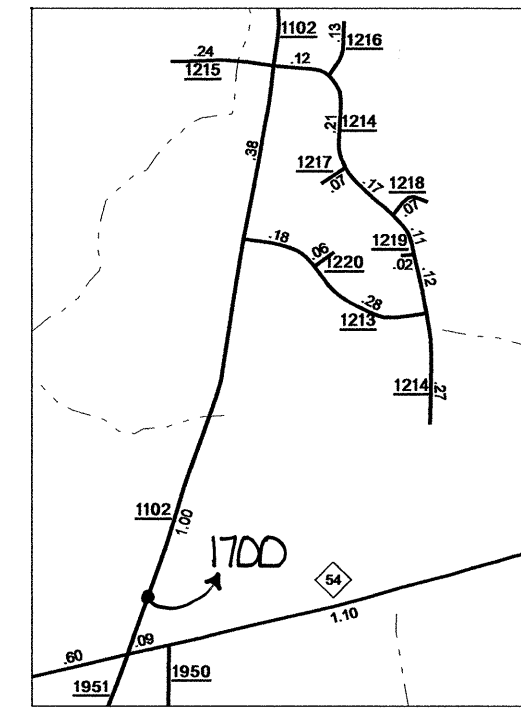
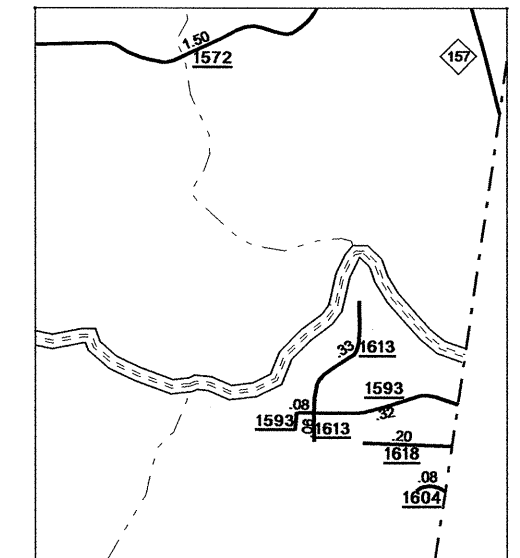
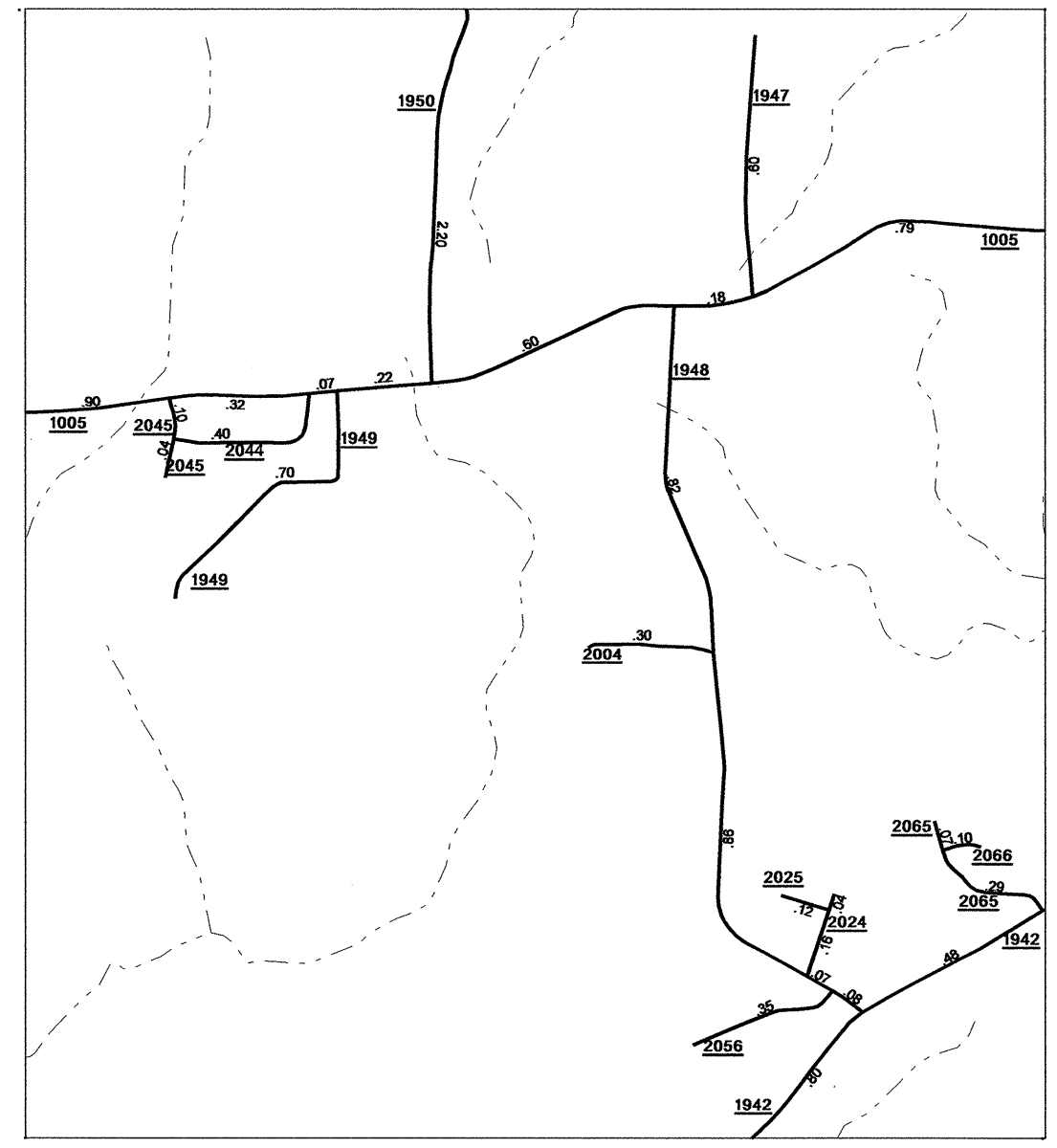
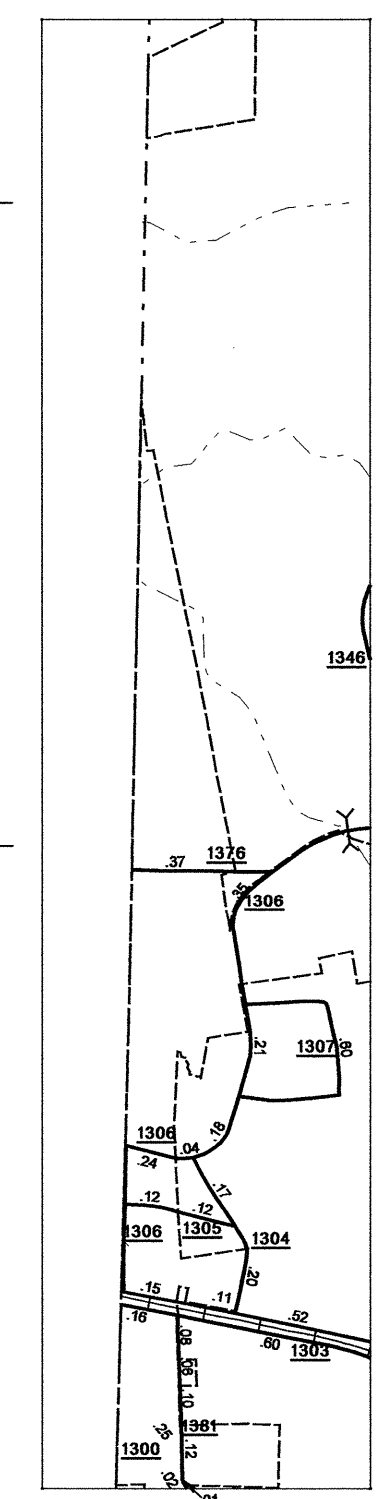
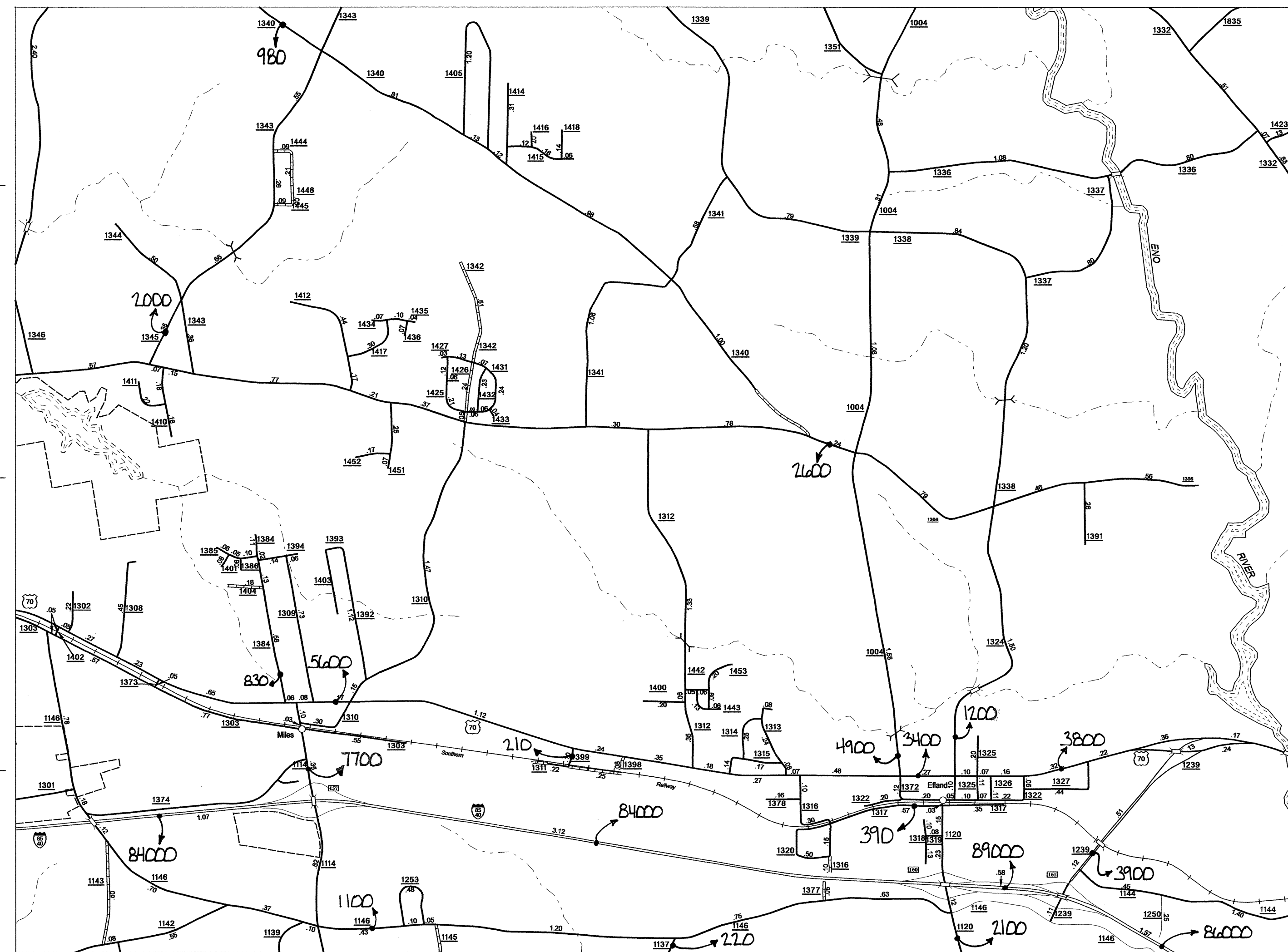


Disclaimer: The M/G Unit's goal is to provide the most accurate information as possible, the magnitude of the data prevents any guarantee of accuracy or completeness. If you find any information that is incorrect, please send your request to the M/G Unit.

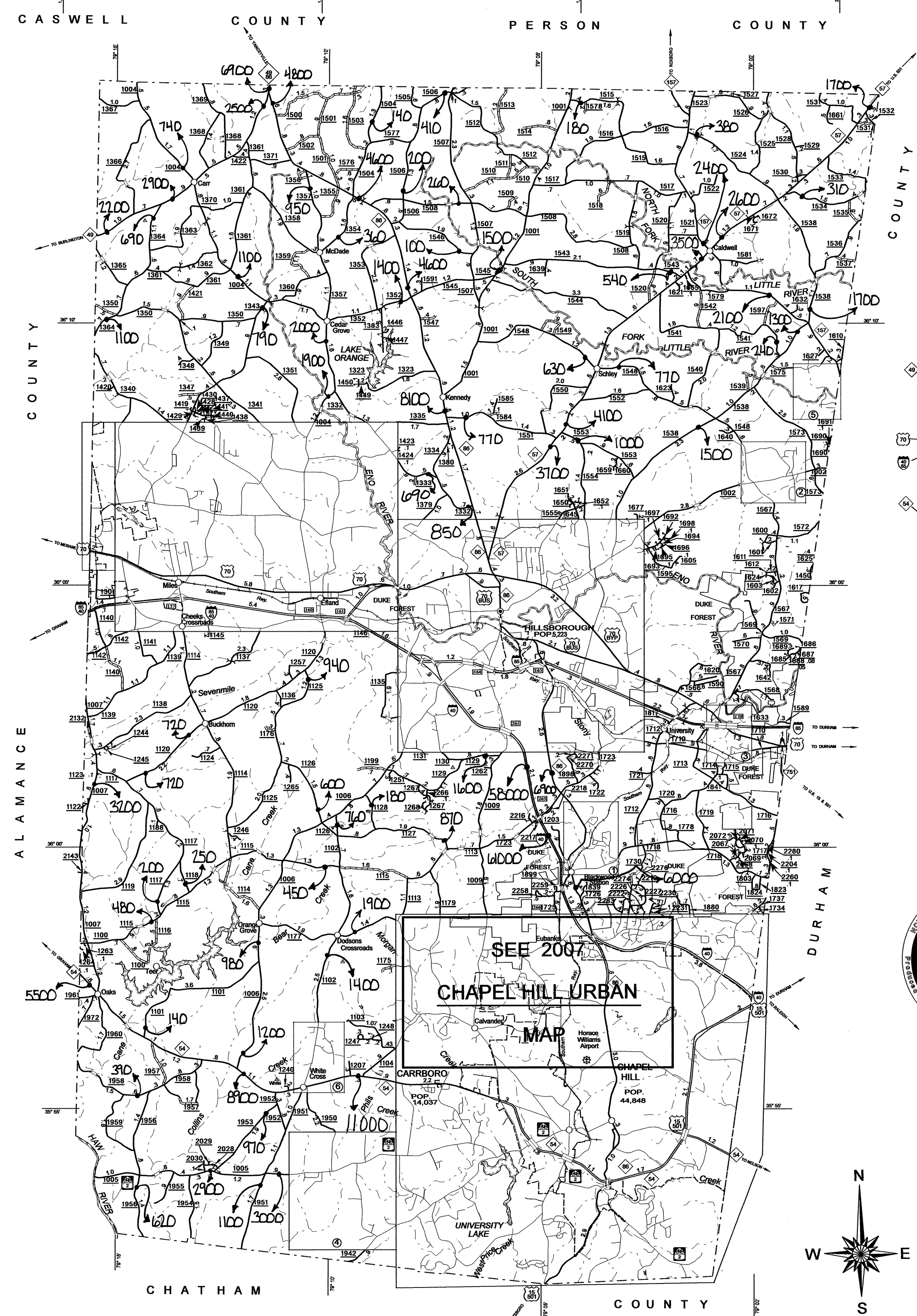
ORANGE COUNTY
 COUNTY MAPS ARE AVAILABLE
 TO THE PUBLIC AT A MINIMAL COST.
 ADDRESS:
 N.C. DEPARTMENT OF TRANSPORTATION
 STATE ROAD MAINTENANCE UNIT
 300 CAROLANNA DRIVE, SUITE 200
 RALEIGH, N.C. 27601

REVISED
 02/27/02 R/LN
 11/06/02 R/LN
 3/01/03 R/LN
 02/27/03 R/LN
 2/04/04 R/LN
 5/12/04 R/LN
 02/10/05 R/LN
 7/12/04 R/LN
 1/15/06 R/LN
 7/18/06 TRP
 1/22/08 TRP
 10/14/07 TRP
 02/27/08 TRP

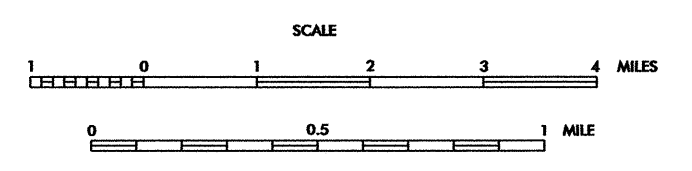


NOTE: MAP INCLUDES ONLY STATE MAINTAINED ROADS OR IMPORTANT NON-SYSTEM ROADS. ROADS SHOWN AS OF MAY 27, 2008

County Boundary alignments are based on information provided by State and Federal agencies, and are shown in their approximate locations.



2008 AADT
 ANNUAL AVERAGE DAILY TRAFFIC
ORANGE COUNTY
 NORTH CAROLINA
 GENERATED BY THE
TRAFFIC SURVEY GROUP
 TRANSPORTATION PLANNING BRANCH
DATE MAP WAS PREPARED BY
 NORTH CAROLINA DEPARTMENT OF TRANSPORTATION
 STATE ROAD MAINTENANCE UNIT
 MAPPING & INFORMATION SECTION
IN COOPERATION WITH THE
 U.S. DEPARTMENT OF TRANSPORTATION
 FEDERAL HIGHWAY ADMINISTRATION



16800 FOOT GRID BASED ON NORTH CAROLINA PLANE COORDINATE SYSTEM
 POLYCONIC PROJECTION