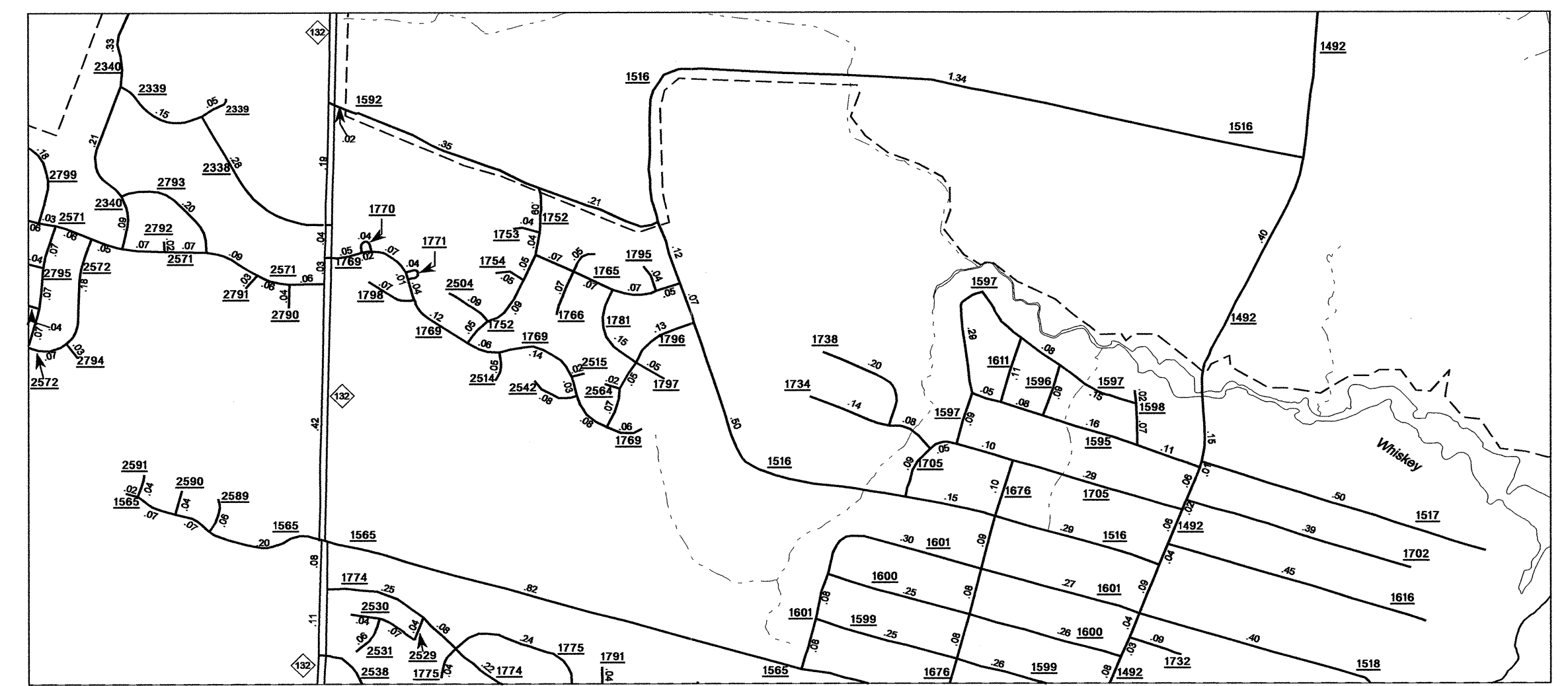
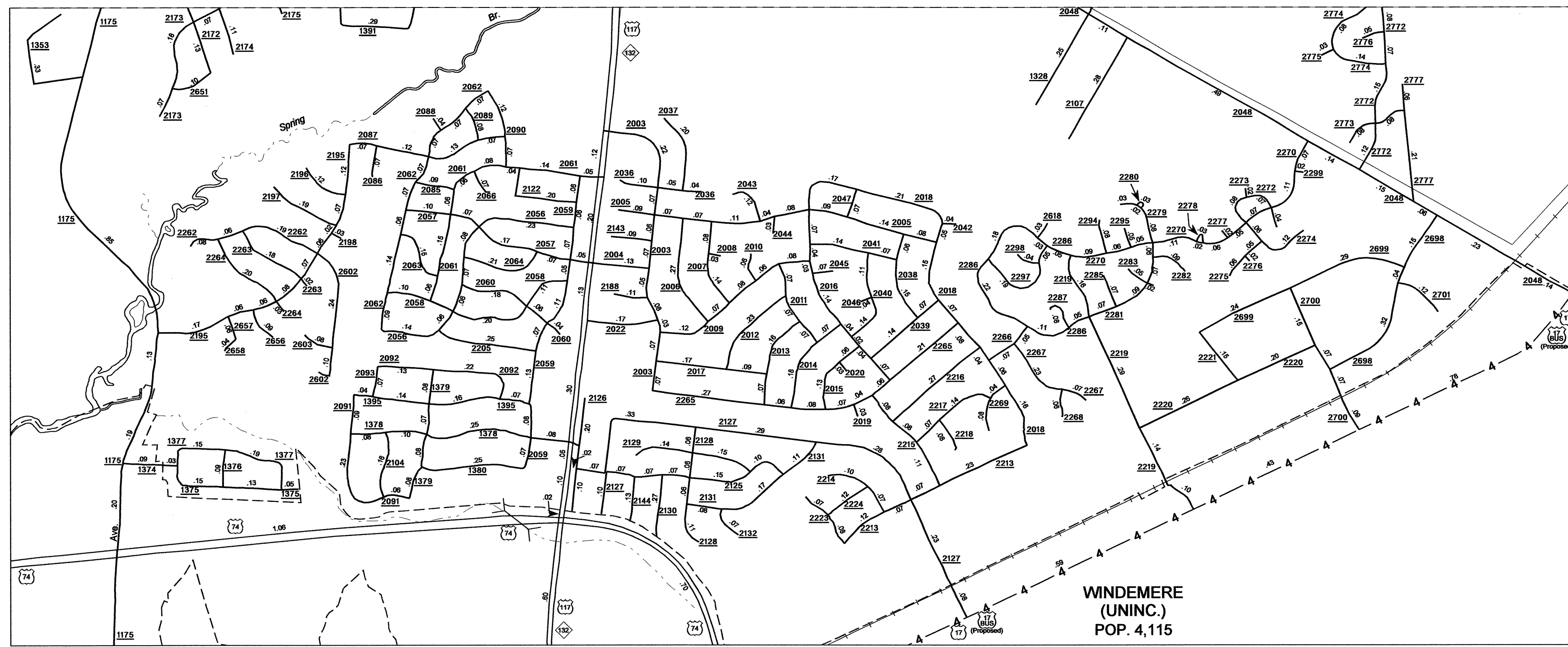
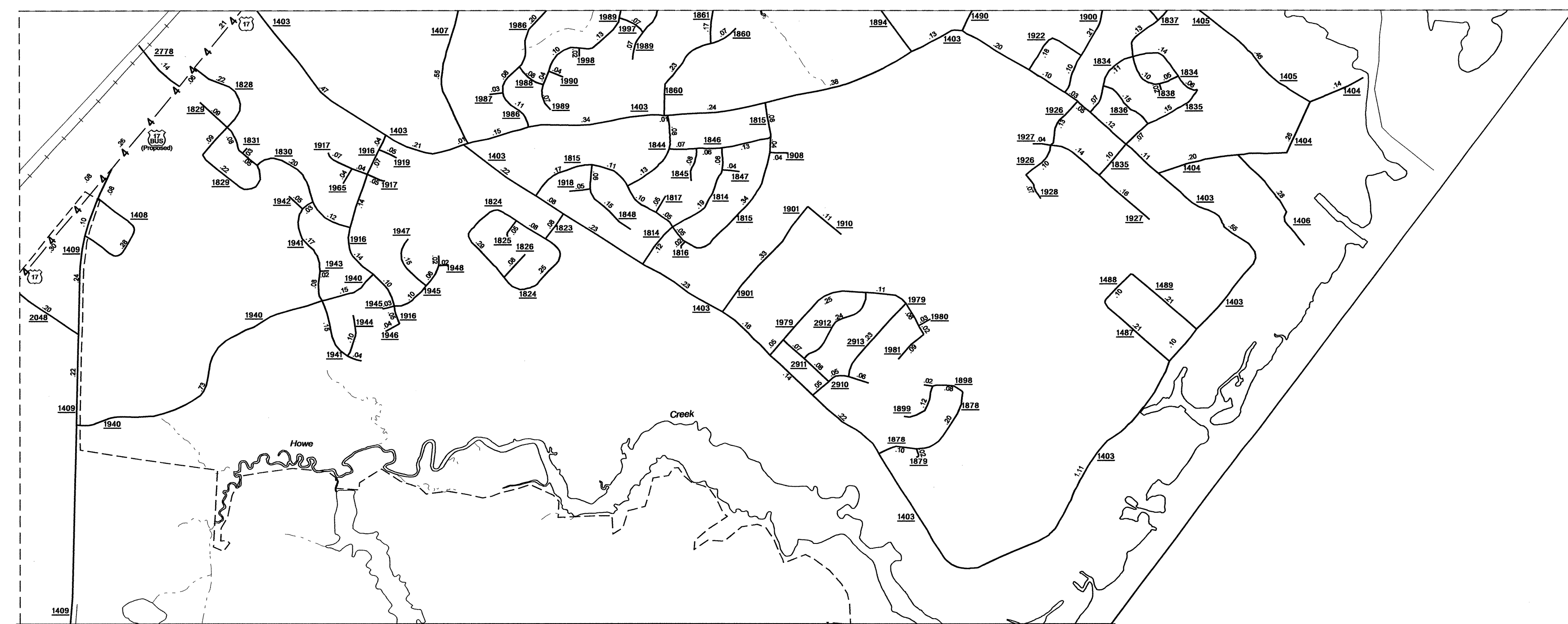
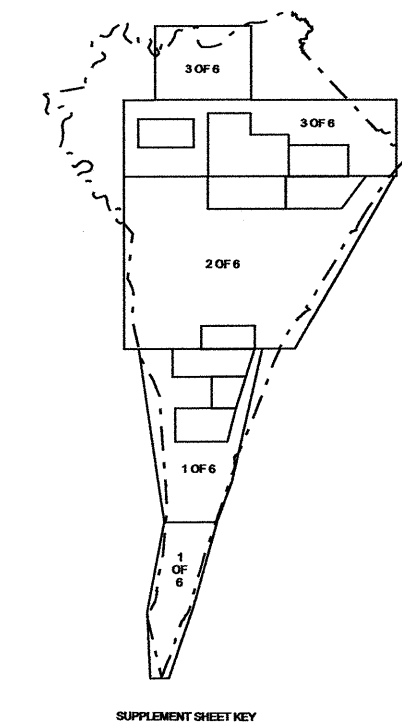


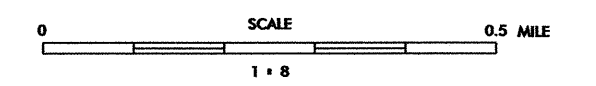
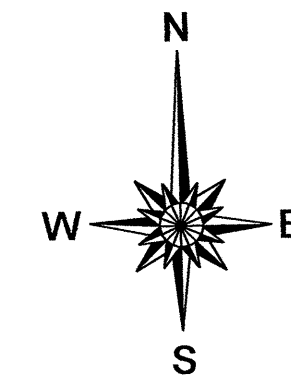
Disclaimer: The IMG Unit's goal is to provide the most accurate information as possible, the magnitude of the data prevents any guarantee of accuracy or completeness. If you find any information that is incorrect, please send your request to the IMG Unit.



SEE 2007
WILMINGTON URBAN
MAP



2008 AADT
ANNUAL AVERAGE DAILY TRAFFIC
NEW HANOVER COUNTY
NORTH CAROLINA
GENERATED BY THE
TRAFFIC SURVEY GROUP
TRANSPORTATION PLANNING BRANCH
BASE MAPPING PREPARED BY
NORTH CAROLINA DEPARTMENT OF TRANSPORTATION
STATE ROAD MAINTENANCE UNIT
MAPPING & INFORMATION SECTION
IN COOPERATION WITH THE
U.S. DEPARTMENT OF TRANSPORTATION
FEDERAL HIGHWAY ADMINISTRATION



NEW HANOVER SUP. 4
COPIES OF THIS MAP ARE AVAILABLE
FROM THE COUNTY ENGINEER'S OFFICE
N.C. DEPARTMENT OF TRANSPORTATION
INFORMATION MAPPING AND GRAPHICS
2110000 MCG
RALEIGH, N.C. 27615

REVISED
01/07 BCH
07/07 BCH
02/08 BCH
05/08 BCH
10/08 BCH
12/08 MCG
11/09 BDC
21/09 MCG
4/2009 BDC