

Disclaimer: The IMG Unit's goal is to provide the most accurate information as possible, the magnitude of the data prevents any guarantee of accuracy or completeness. If you find any information that is incorrect, please send your request to the IMG Unit.

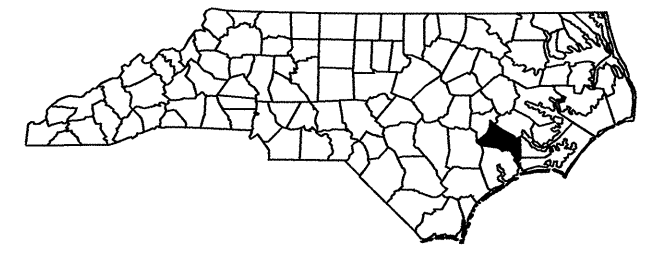
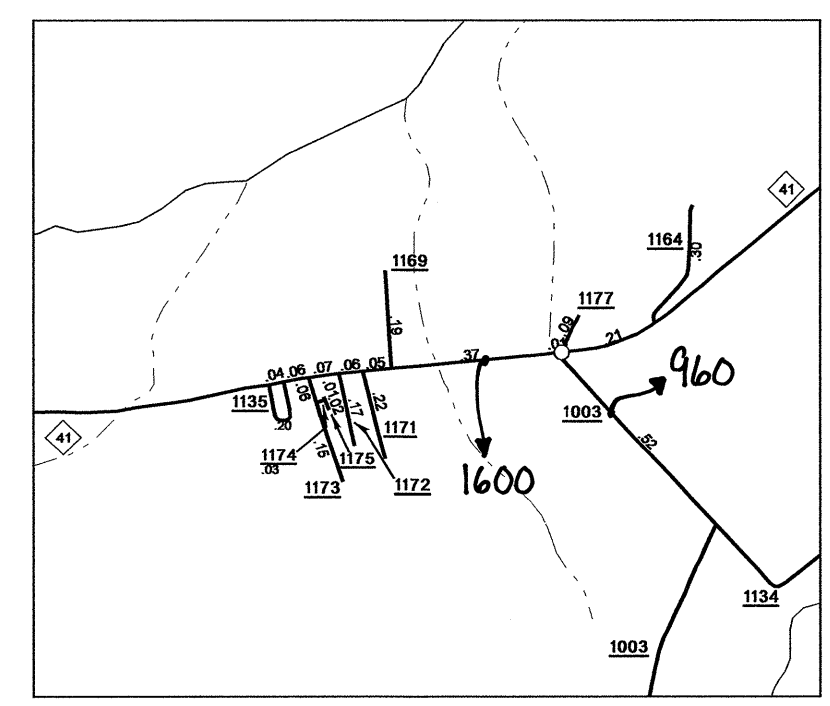
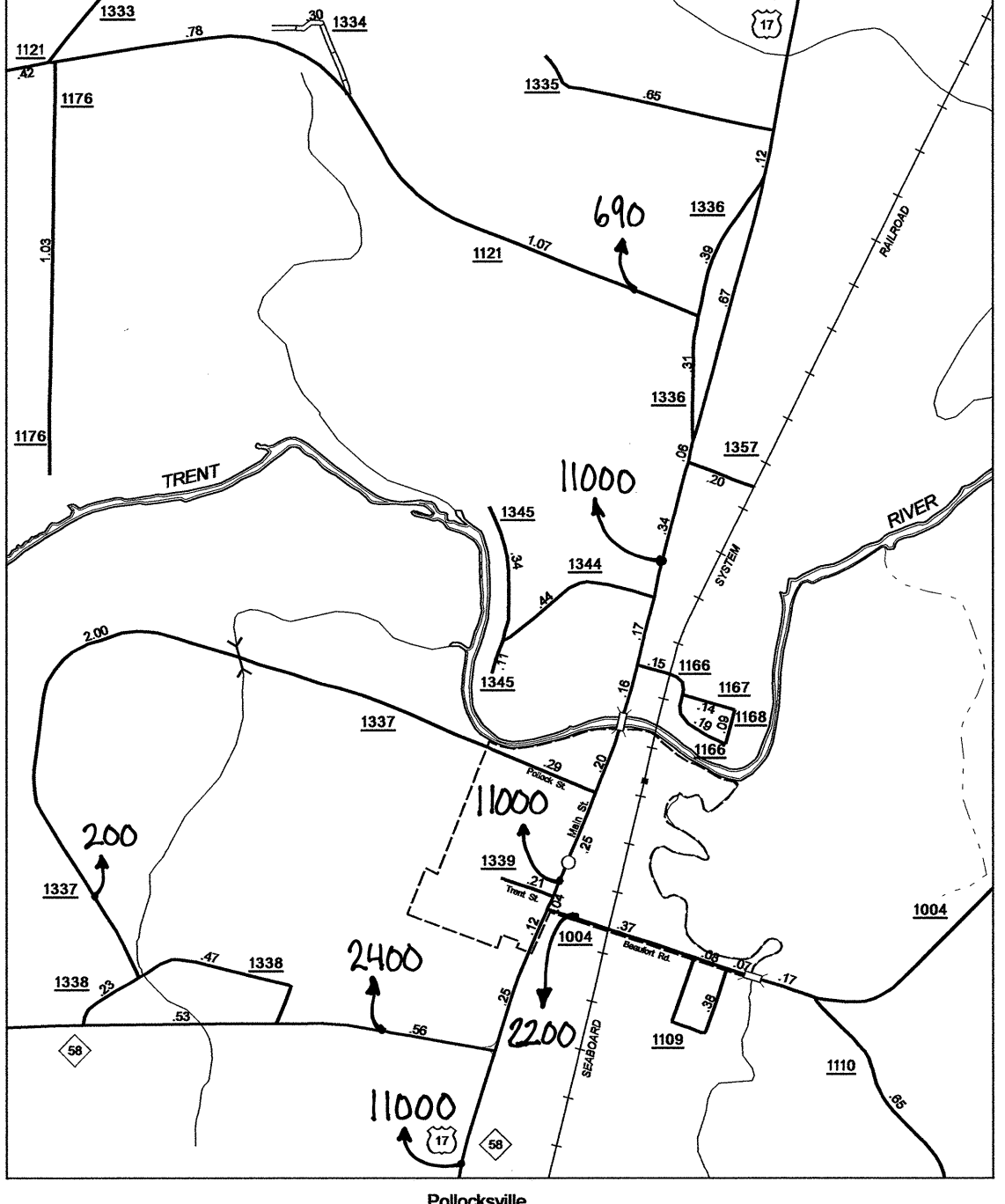
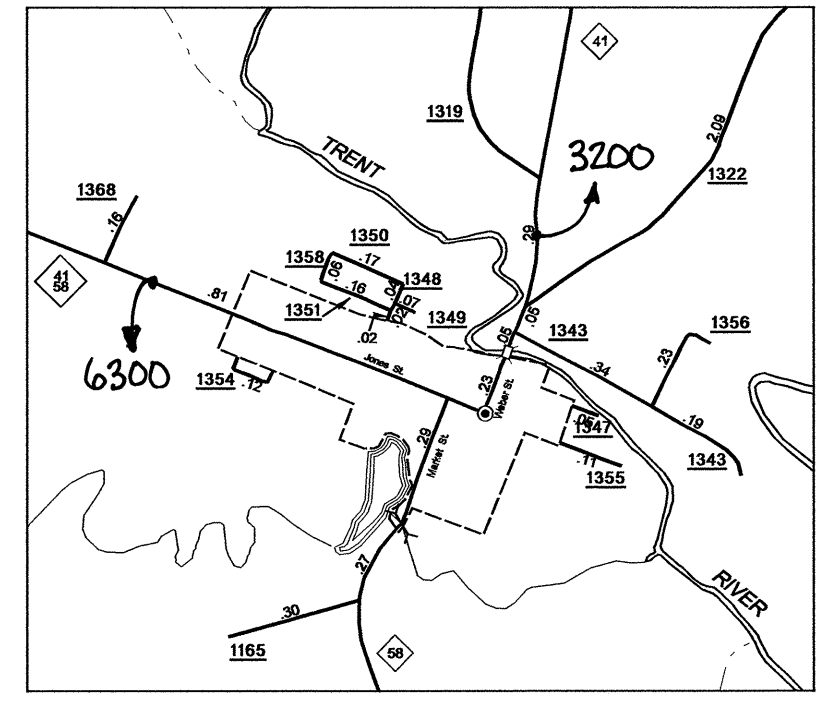
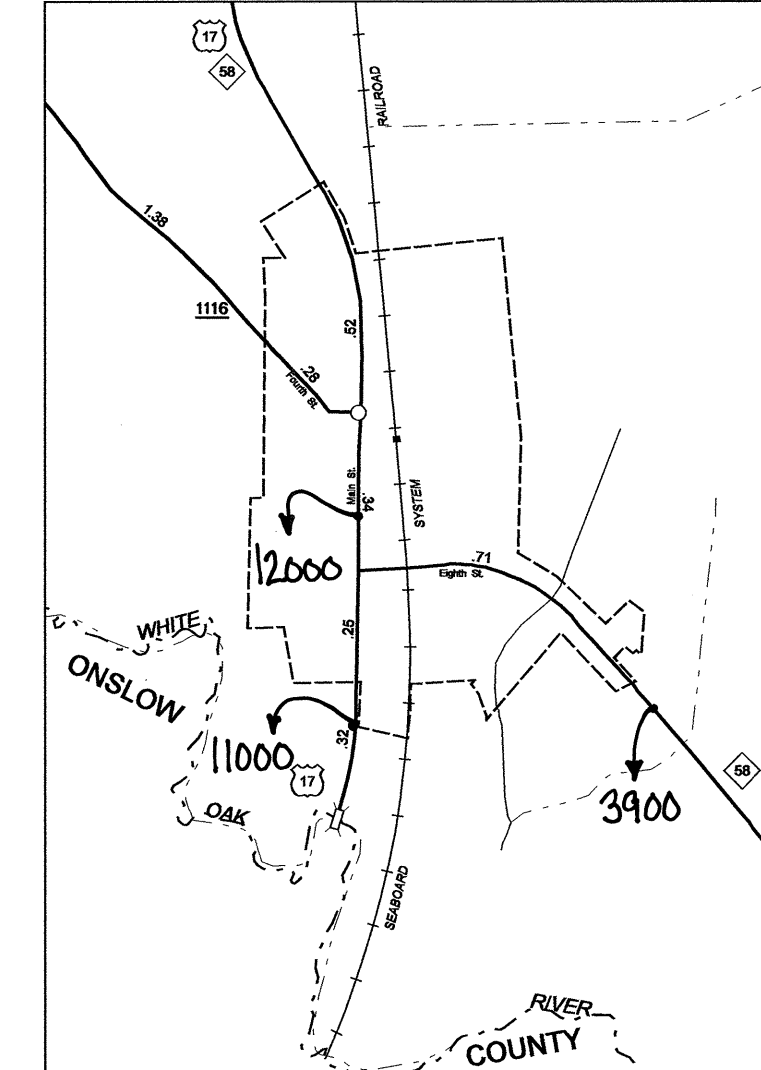
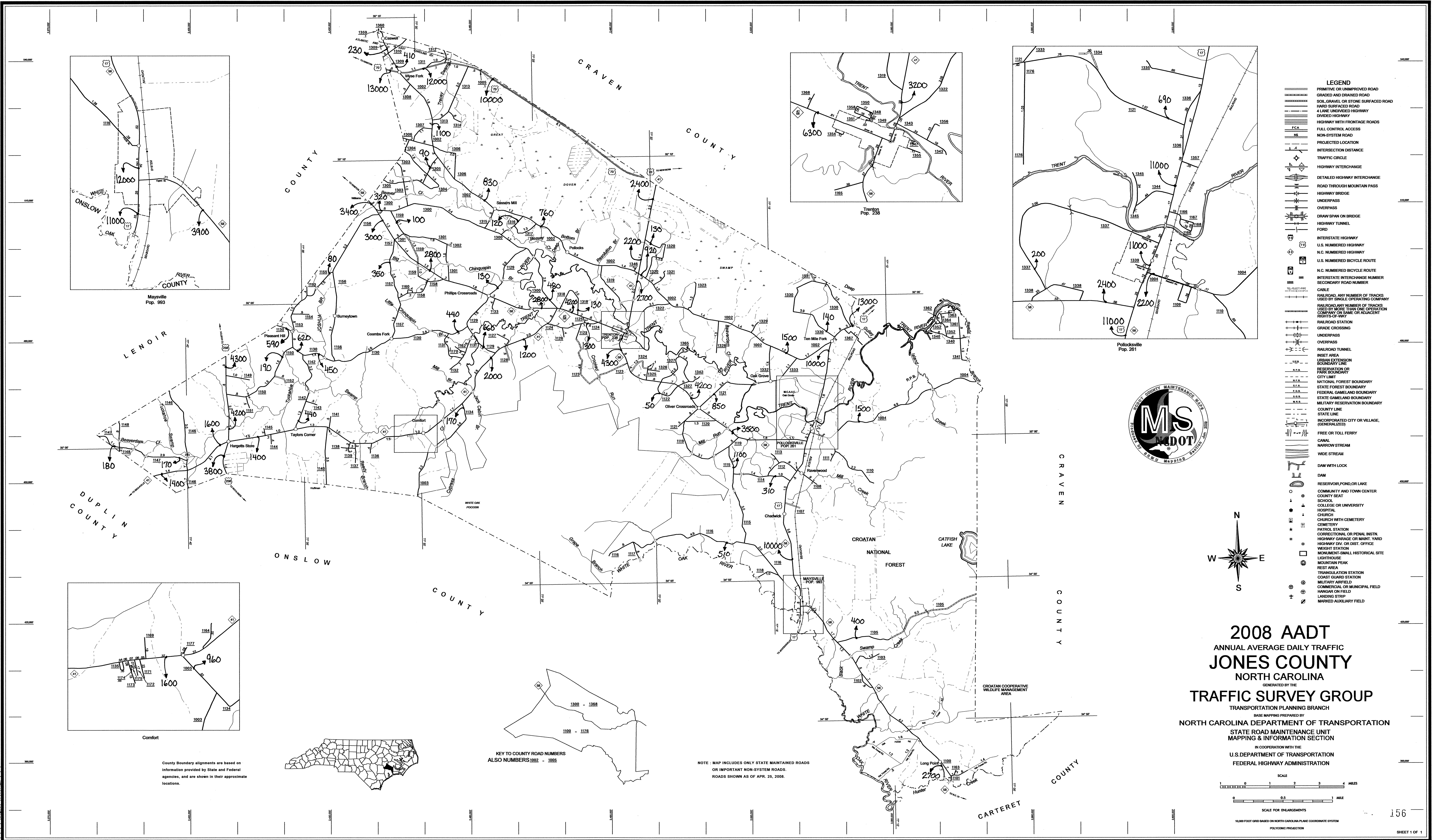
REVISED  
 3/8/02 MISC  
 2/8/03 CH  
 11/02/03 MISC  
 12/03/03 MISC  
 8/15/04 MISC  
 9/25/04 MISC  
 7/25/06 MISC  
 8/10/06 MISC  
 11/29/06 MISC  
 3/29/07 MISC  
 12/18/07 MISC  
 4/25/08 MISC

County Boundary alignments are based on information provided by State and Federal agencies, and are shown in their approximate locations.

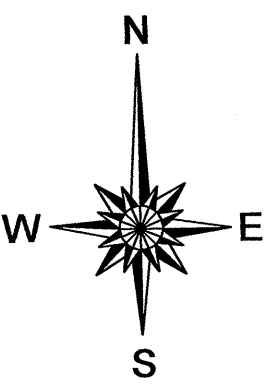
KEY TO COUNTY ROAD NUMBERS  
 ALSO NUMBERS 1002 - 1005

NOTE: MAP INCLUDES ONLY STATE MAINTAINED ROADS OR IMPORTANT NON-SYSTEM ROADS. ROADS SHOWN AS OF APR. 25, 2008.

SCALE FOR ENLARGEMENTS  
 15000 FOOT GRID BASED ON NORTH CAROLINA PLANE COORDINATE SYSTEM  
 POLYCONIC PROJECTION



- LEGEND**
- PRIMITIVE OR UNIMPROVED ROAD
  - GRADED AND DRAINED ROAD
  - SOIL GRAVEL OR STONE SURFACED ROAD
  - HARD SURFACED ROAD
  - 4 LANE UNDIVIDED HIGHWAY
  - DIVIDED HIGHWAY
  - HIGHWAY WITH FRONTAGE ROADS
  - FULL CONTROL ACCESS
  - NON-SYSTEM ROAD
  - PROJECTED LOCATION
  - INTERSECTION DISTANCE
  - TRAFFIC CIRCLE
  - HIGHWAY INTERCHANGE
  - DETAILED HIGHWAY INTERCHANGE
  - ROAD THROUGH MOUNTAIN PASS
  - HIGHWAY BRIDGE
  - UNDERPASS
  - OVERPASS
  - DRAW SPAN ON BRIDGE
  - HIGHWAY TUNNEL
  - FORD
  - INTERSTATE HIGHWAY
  - U.S. NUMBERED HIGHWAY
  - N.C. NUMBERED HIGHWAY
  - U.S. NUMBERED BICYCLE ROUTE
  - N.C. NUMBERED BICYCLE ROUTE
  - INTERSTATE INTERCHANGE NUMBER
  - SECONDARY ROAD NUMBER
  - CABLE
  - RAILROAD ANY NUMBER OF TRACKS USED BY SINGLE OPERATING COMPANY
  - RAILROAD ANY NUMBER OF TRACKS USED BY MORE THAN ONE OPERATING COMPANY OR SAME OR ADJACENT RIGHTS-OF-WAY
  - RAILROAD STATION
  - GRADE CROSSING
  - UNDERPASS
  - OVERPASS
  - RAILROAD TUNNEL
  - INSET AREA
  - URBAN EXTENSION
  - BOUNDARY LINE
  - RESERVATION OR PARK BOUNDARY
  - CITY LIMIT
  - NATIONAL FOREST BOUNDARY
  - STATE FOREST BOUNDARY
  - FEDERAL GAMEDLAND BOUNDARY
  - STATE GAMEDLAND BOUNDARY
  - MILITARY RESERVATION BOUNDARY
  - COUNTY LINE
  - STATE LINE
  - INCORPORATED CITY OR VILLAGE, (GENERALIZED)
  - FREE OR TOLL FERRY
  - CANAL
  - NARROW STREAM
  - WIDE STREAM
  - DAM WITH LOCK
  - DAM
  - RESERVOIR, POND, OR LAKE
  - COMMUNITY AND TOWN CENTER
  - COUNTY SEAT
  - SCHOOL
  - COLLEGE OR UNIVERSITY
  - HOSPITAL
  - CHURCH
  - CHURCH WITH CEMETERY
  - CEMETERY
  - PATROL STATION
  - CORRECTIONAL OR PENAL INSTN.
  - HIGHWAY GARAGE OR MAINT. YARD
  - HIGHWAY DIV. OR DIST. OFFICE
  - WEIGHT STATION
  - MONUMENT-SMALL HISTORICAL SITE
  - LIGHTHOUSE
  - MOUNTAIN PEAK
  - REST AREA
  - TRIANGULATION STATION
  - COAST GUARD STATION
  - MILITARY AIRFIELD
  - COMMERCIAL OR MUNICIPAL FIELD
  - HANGAR ON FIELD
  - LANDING STRIP
  - MARKED AUXILIARY FIELD



**2008 AADT**  
 ANNUAL AVERAGE DAILY TRAFFIC  
**JONES COUNTY**  
 NORTH CAROLINA

GENERATED BY THE  
**TRAFFIC SURVEY GROUP**  
 TRANSPORTATION PLANNING BRANCH  
 BASE MAPS PREPARED BY  
 NORTH CAROLINA DEPARTMENT OF TRANSPORTATION  
 STATE ROAD MAINTENANCE UNIT  
 MAPPING & INFORMATION SECTION  
 IN COOPERATION WITH THE  
 U.S. DEPARTMENT OF TRANSPORTATION  
 FEDERAL HIGHWAY ADMINISTRATION