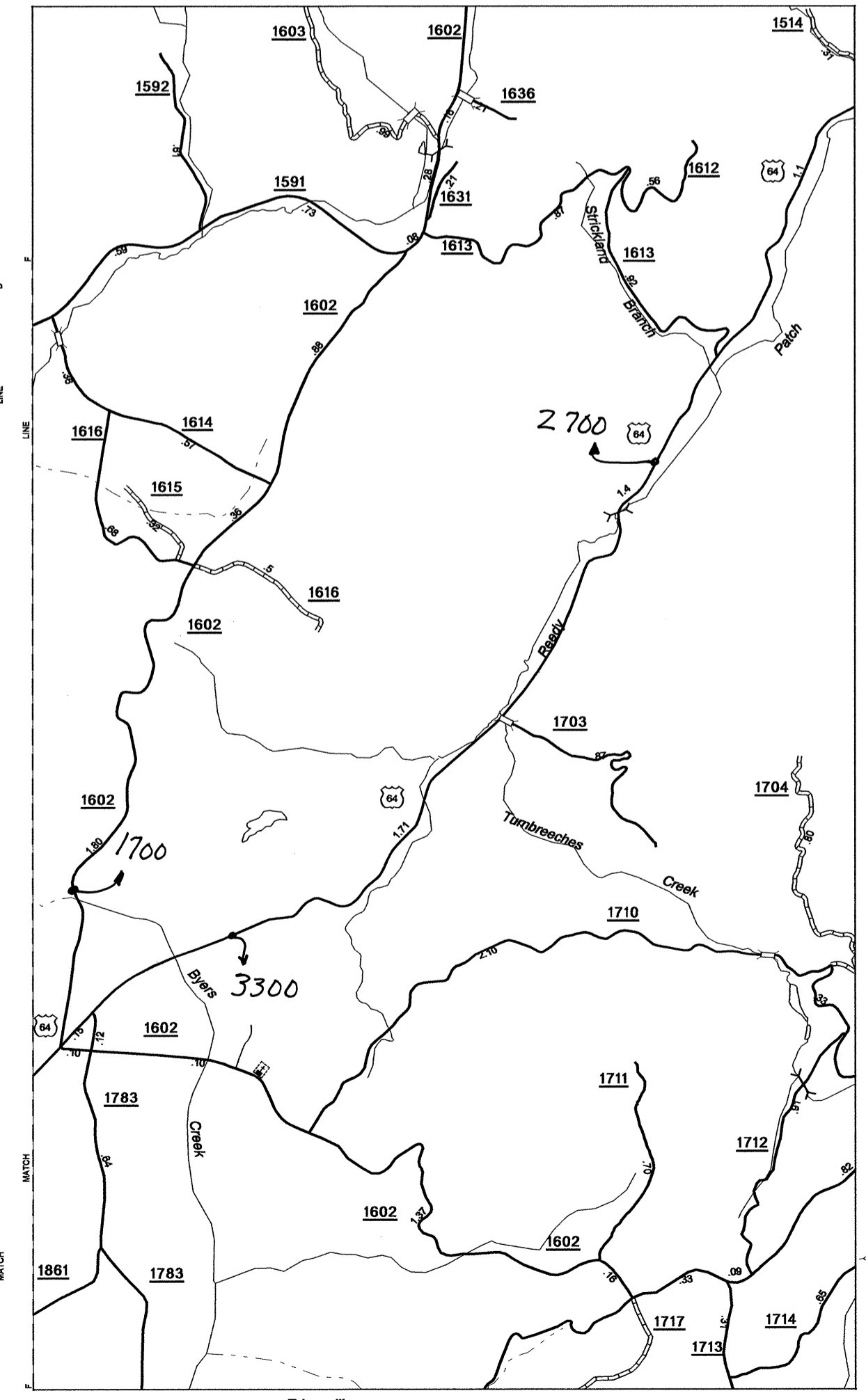
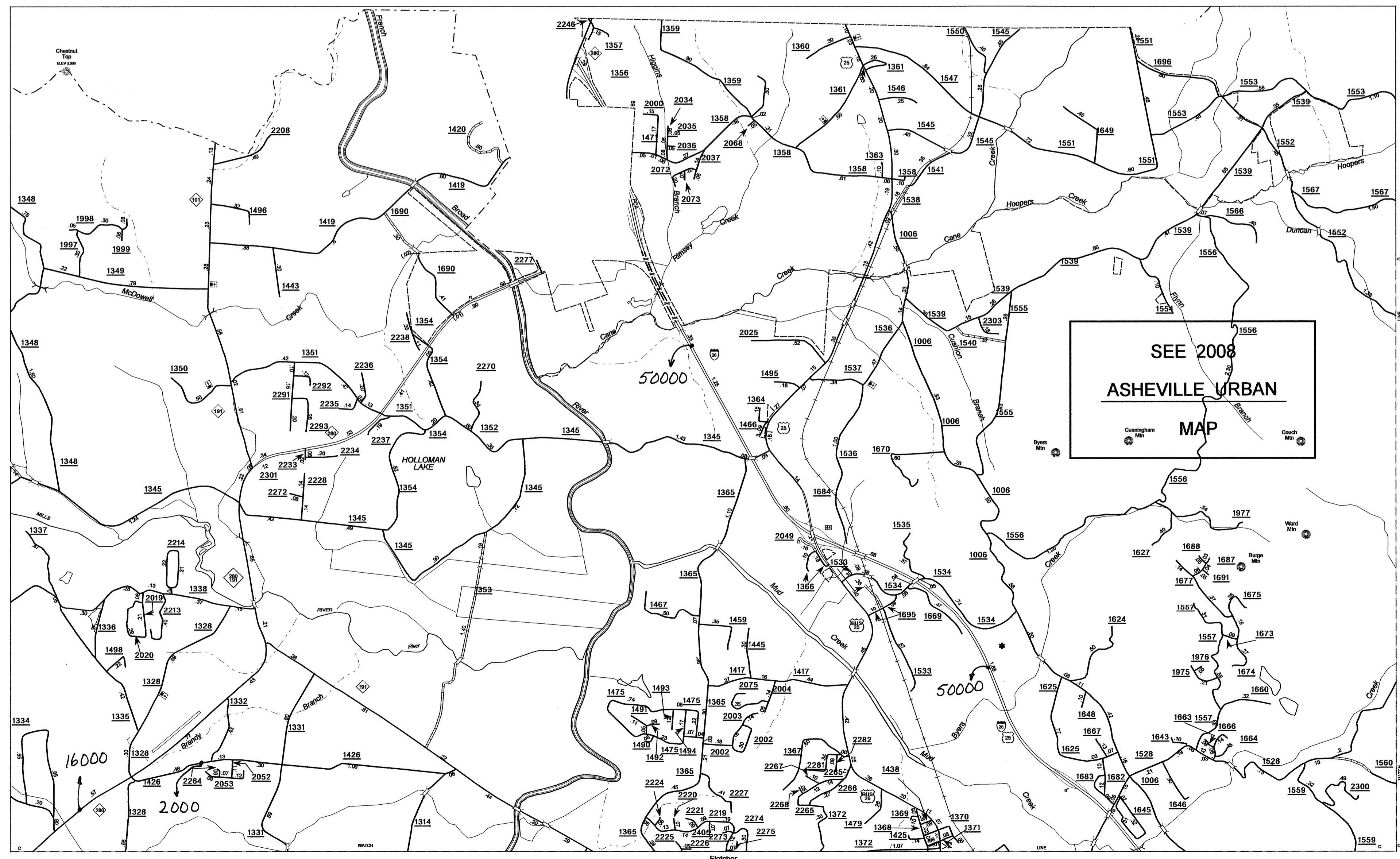
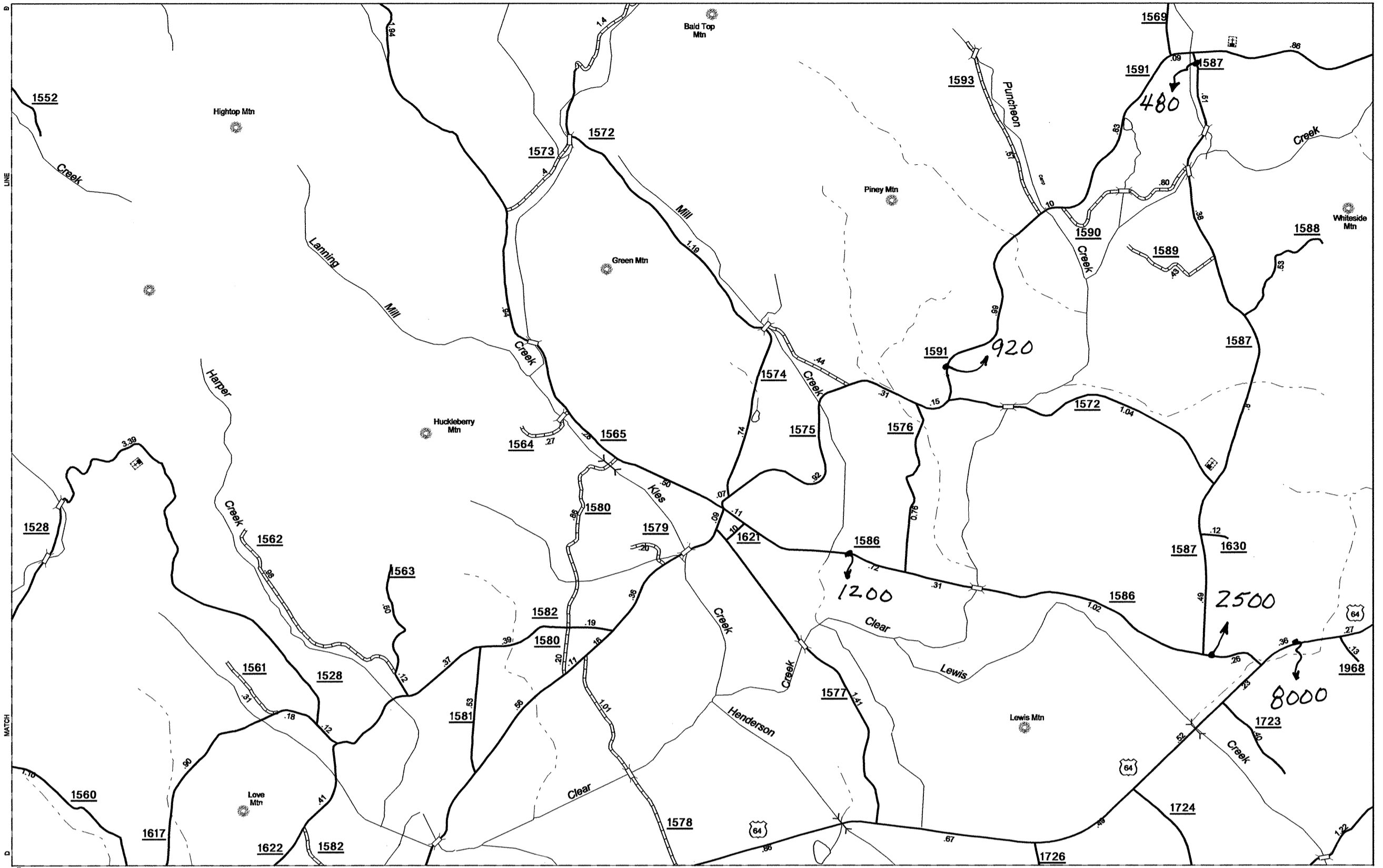
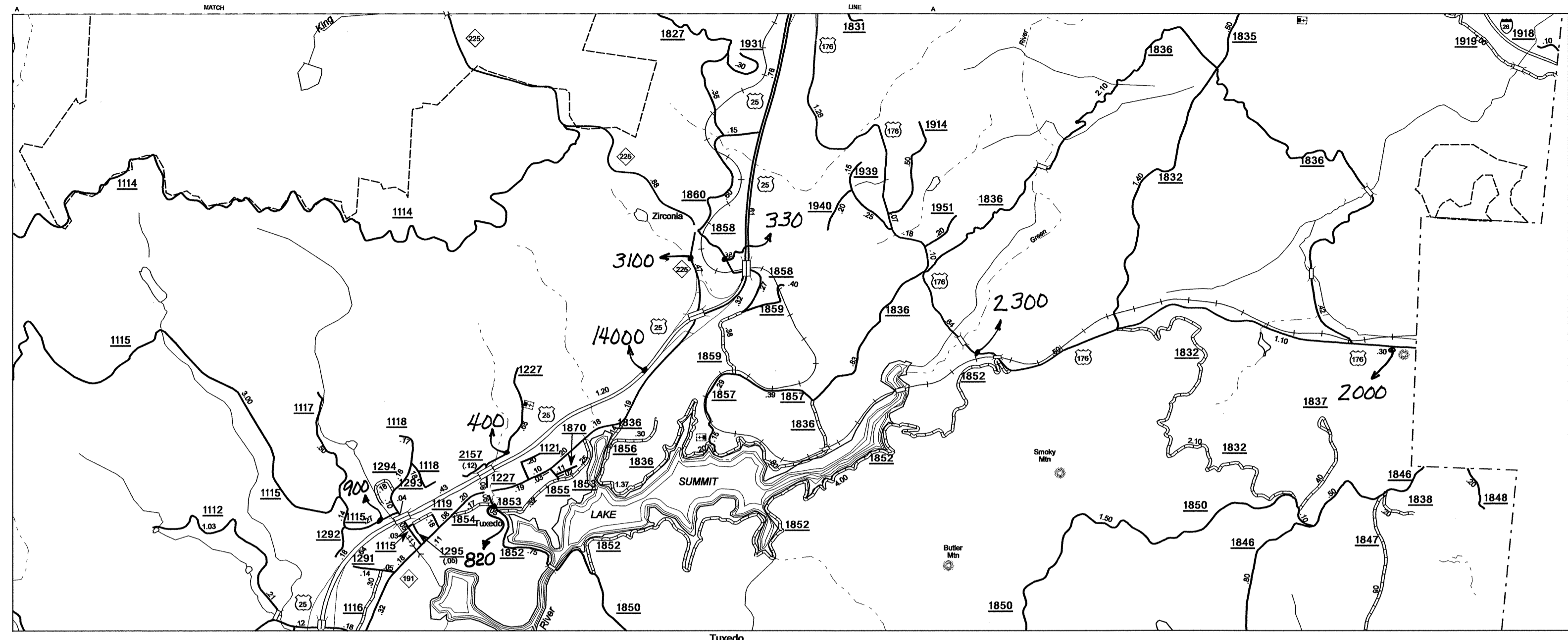
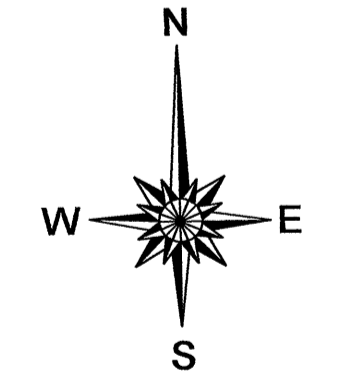


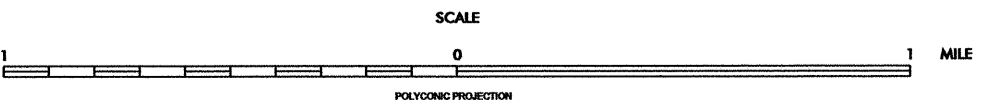
Disclaimer: The IMG Unit's goal is to provide the most accurate information as possible, the magnitude of the data prevents any guarantee of accuracy or completeness. If you find any information that is incorrect, please send your request to the IMG Unit.



SEE 2008
ASHEVILLE URBAN
MAP



2008 AADT
ANNUAL AVERAGE DAILY TRAFFIC
HENDERSON COUNTY
NORTH CAROLINA
GENERATED BY THE
TRAFFIC SURVEY GROUP
TRANSPORTATION PLANNING BRANCH
BASE MAPPING PREPARED BY
NORTH CAROLINA DEPARTMENT OF TRANSPORTATION
STATE ROAD MAINTENANCE UNIT
MAPPING & INFORMATION SECTION
IN COOPERATION WITH THE
U.S. DEPARTMENT OF TRANSPORTATION
FEDERAL HIGHWAY ADMINISTRATION



REVISED 11/17/05 SRC
2008 ELO
10/31/08 ELO
07/17/08 BLD
12/09/08 RLN
2/10/09 RLN
4/15/09 RLN