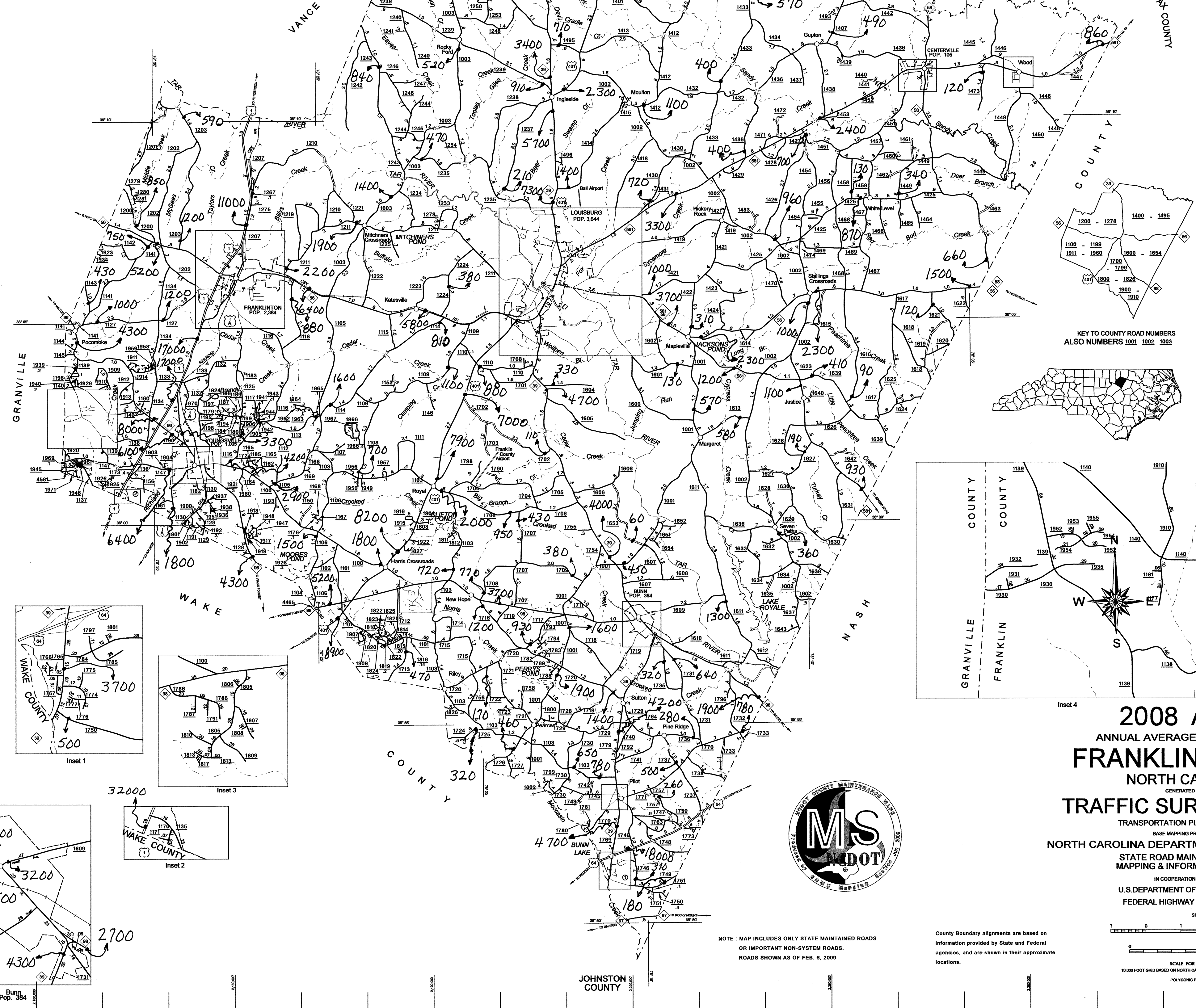
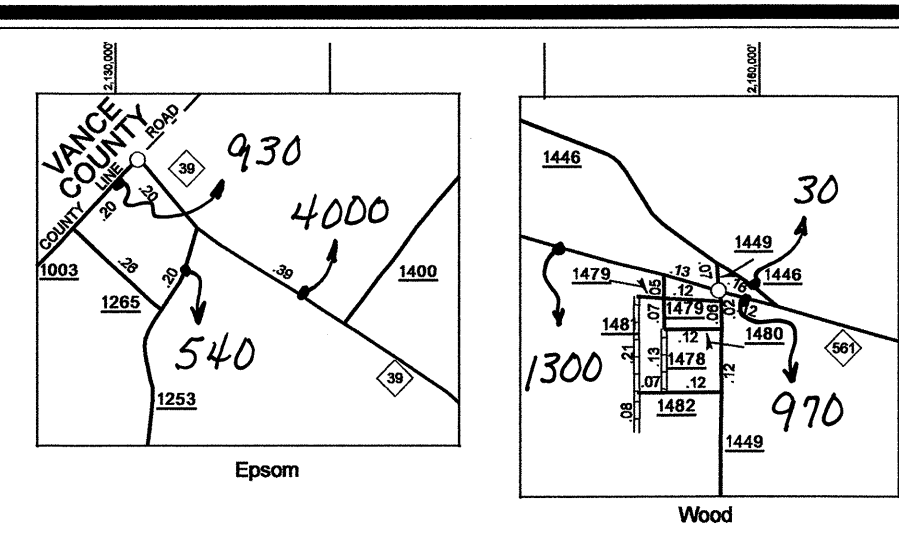
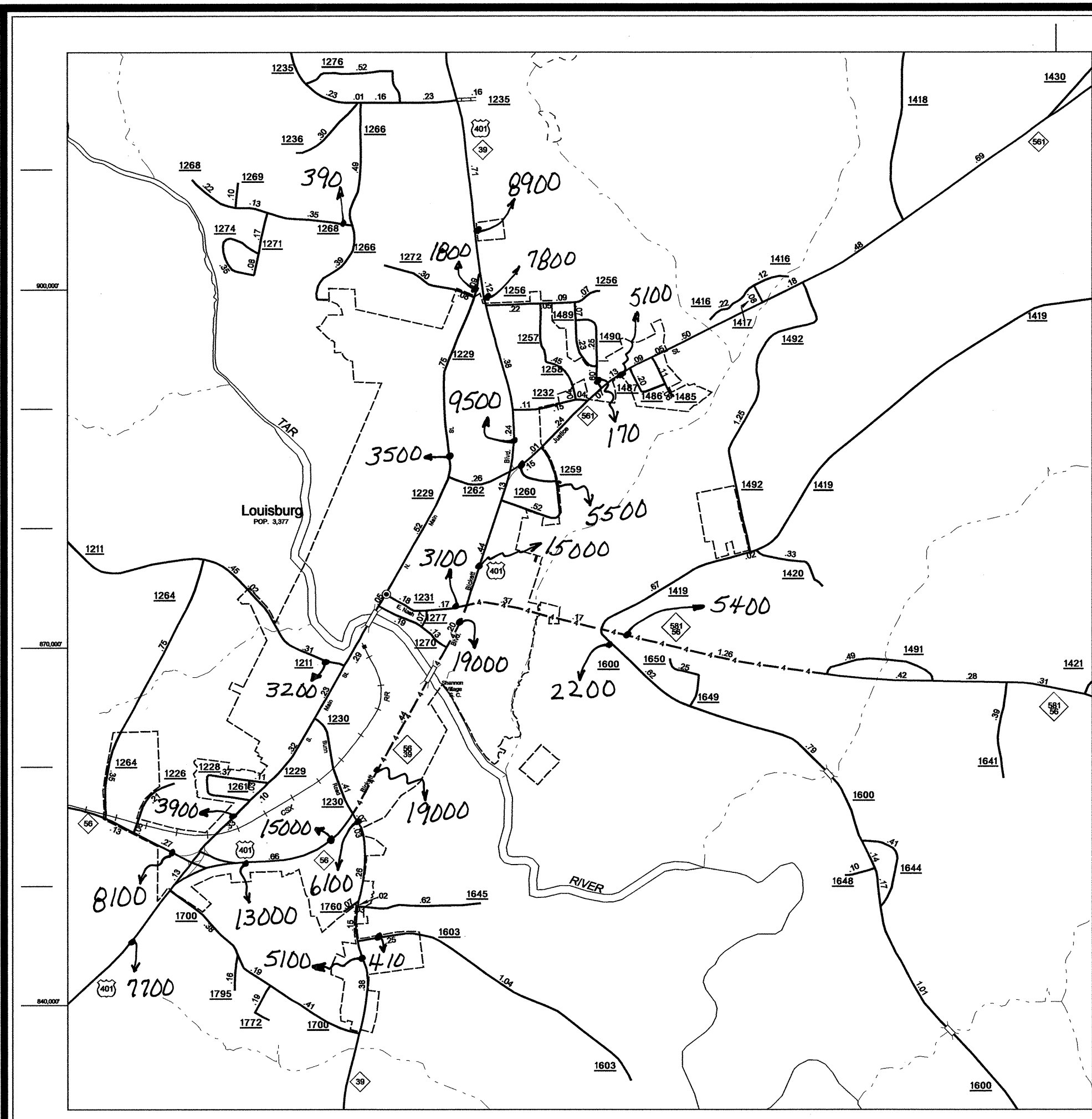


Disclaimer:

THIS MAP IS THE PROPERTY OF THE STATE OF NORTH CAROLINA. IT IS TO BE USED ONLY FOR THE PURPOSES FOR WHICH IT WAS DESIGNED. ANY REPRODUCTION OR TRANSMISSION IN ANY FORM OR BY ANY MEANS, WITHOUT THE WRITTEN PERMISSION OF THE NORTH CAROLINA DEPARTMENT OF TRANSPORTATION, IS PROHIBITED.

REVISED  
05/08 MEM  
01/08 MEM  
02/08 MEM  
03/08 MEM  
04/08 MEM



- LEGEND**
- PRIMITIVE OR UNIMPROVED ROAD
  - GRAVEL AND DRAINED ROAD
  - SOIL GRAVEL OR STONE SURFACED ROAD
  - HARD SURFACED ROAD
  - 4 LANE UNDIVIDED HIGHWAY
  - DIVIDED HIGHWAY
  - HIGHWAY WITH FRONTAGE ROADS
  - FCA FULL CONTROL ACCESS
  - NON-SYSTEM ROAD
  - PROJECTED LOCATION
  - INTERSECTION DISTANCE
  - TRAFFIC CIRCLE
  - HIGHWAY INTERCHANGE
  - DETAILED HIGHWAY INTERCHANGE
  - ROAD THROUGH MOUNTAIN PASS
  - HIGHWAY BRIDGE
  - UNDERPASS
  - OVERPASS
  - DRAW SPAN ON BRIDGE
  - HIGHWAY TUNNEL
  - FORD
  - INTERSTATE HIGHWAY
  - U.S. NUMBERED HIGHWAY
  - N.C. NUMBERED HIGHWAY
  - U.S. NUMBERED BICYCLE ROUTE
  - N.C. NUMBERED BICYCLE ROUTE
  - INTERSTATE INTERCHANGE NUMBER
  - SECONDARY ROAD NUMBER
  - CABLE
  - RAILROAD, ANY NUMBER OF TRACKS USED BY SINGLE OPERATING COMPANY
  - RAILROAD, ANY NUMBER OF TRACKS USED BY MORE THAN ONE OPERATING COMPANY
  - RIGHTS-OF-WAY
  - RAILROAD STATION
  - RAILROAD CROSSING
  - UNDERPASS
  - OVERPASS
  - RAILROAD TUNNEL
  - INSET AREA
  - URBAN EXTENSION BOUNDARY LINE
  - RESERVATION OR PARK BOUNDARY
  - CITY LIMIT
  - NATIONAL FOREST BOUNDARY
  - STATE FOREST BOUNDARY
  - FEDERAL GAMELAND BOUNDARY
  - STATE GAMELAND BOUNDARY
  - MILITARY RESERVATION BOUNDARY
  - COUNTY LINE
  - STATE LINE
  - INCORPORATED CITY OR VILLAGE (GENERALIZED)
  - FREE OR TOLL FERRY
  - CANAL
  - NARROW STREAM
  - WIDE STREAM
  - DAM WITH LOCK
  - DAM
  - RESERVOIR, POND, OR LAKE
  - COMMUNITY AND TOWN CENTER
  - COUNTY SEAT
  - SCHOOL
  - HOSPITAL
  - COLLEGE OR UNIVERSITY
  - CHURCH
  - CHURCH WITH CEMETERY
  - CEMETERY
  - PATROL STATION
  - CORRECTIONAL OR PENAL INSTN.
  - HIGHWAY GARAGE OR MAINT. YARD
  - HIGHWAY DIV. OR DIST. OFFICE
  - WEIGHT STATION
  - MONUMENT-SMALL HISTORICAL SITE
  - LIGHTHOUSE
  - MOUNTAIN PEAK
  - REST AREA
  - TRIANGULATION STATION
  - COAST GUARD STATION
  - MILITARY AIRFIELD
  - COMMERCIAL OR MUNICIPAL FIELD
  - HANGARS ON FIELD
  - LANDING STRIP
  - MARKED AUXILIARY FIELD

KEY TO COUNTY ROAD NUMBERS  
ALSO NUMBERS 1001 1002 1003

# 2008 AADT

ANNUAL AVERAGE DAILY TRAFFIC  
**FRANKLIN COUNTY**  
NORTH CAROLINA  
GENERATED BY THE  
**TRAFFIC SURVEY GROUP**  
TRANSPORTATION PLANNING BRANCH

BASE MAPPING PREPARED BY  
**NORTH CAROLINA DEPARTMENT OF TRANSPORTATION**  
STATE ROAD MAINTENANCE UNIT  
MAPPING & INFORMATION SECTION  
IN COOPERATION WITH THE  
**U.S. DEPARTMENT OF TRANSPORTATION**  
FEDERAL HIGHWAY ADMINISTRATION

SCALE  
0 1 2 3 4 MILES

SCALE FOR ENLARGEMENTS  
16300 FOOT GRID BASED ON NORTH CAROLINA PLANE COORDINATE SYSTEM  
POLYCONIC PROJECTION



NOTE: MAP INCLUDES ONLY STATE MAINTAINED ROADS OR IMPORTANT NON-SYSTEM ROADS. ROADS SHOWN AS OF FEB. 6, 2008

County boundary alignments are based on information provided by State and Federal agencies, and are shown in their approximate locations.