

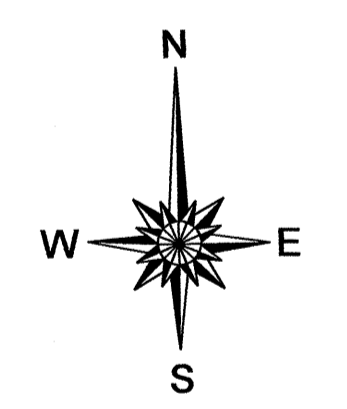
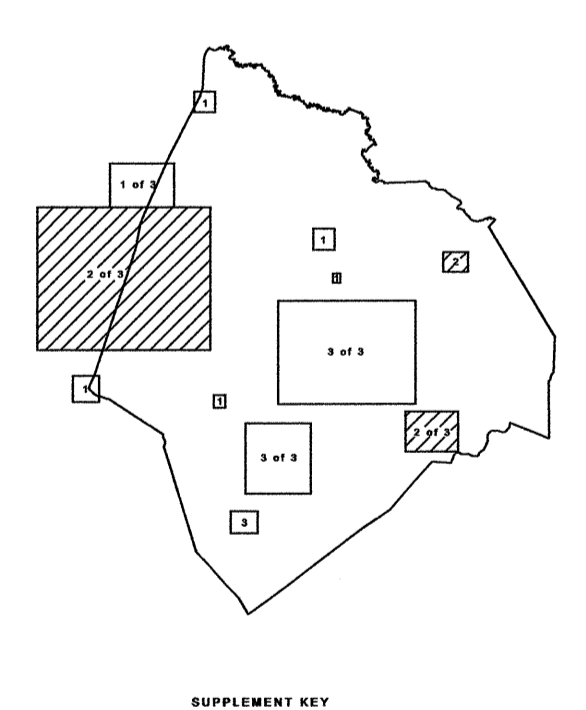
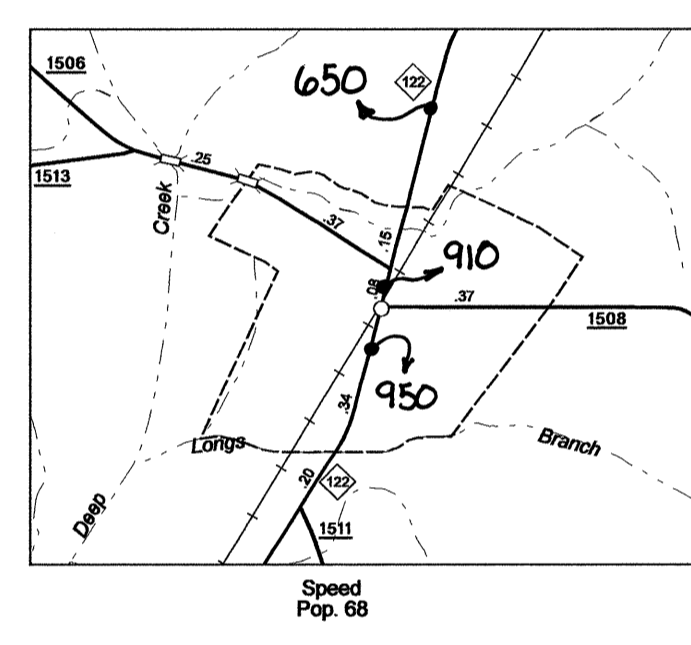
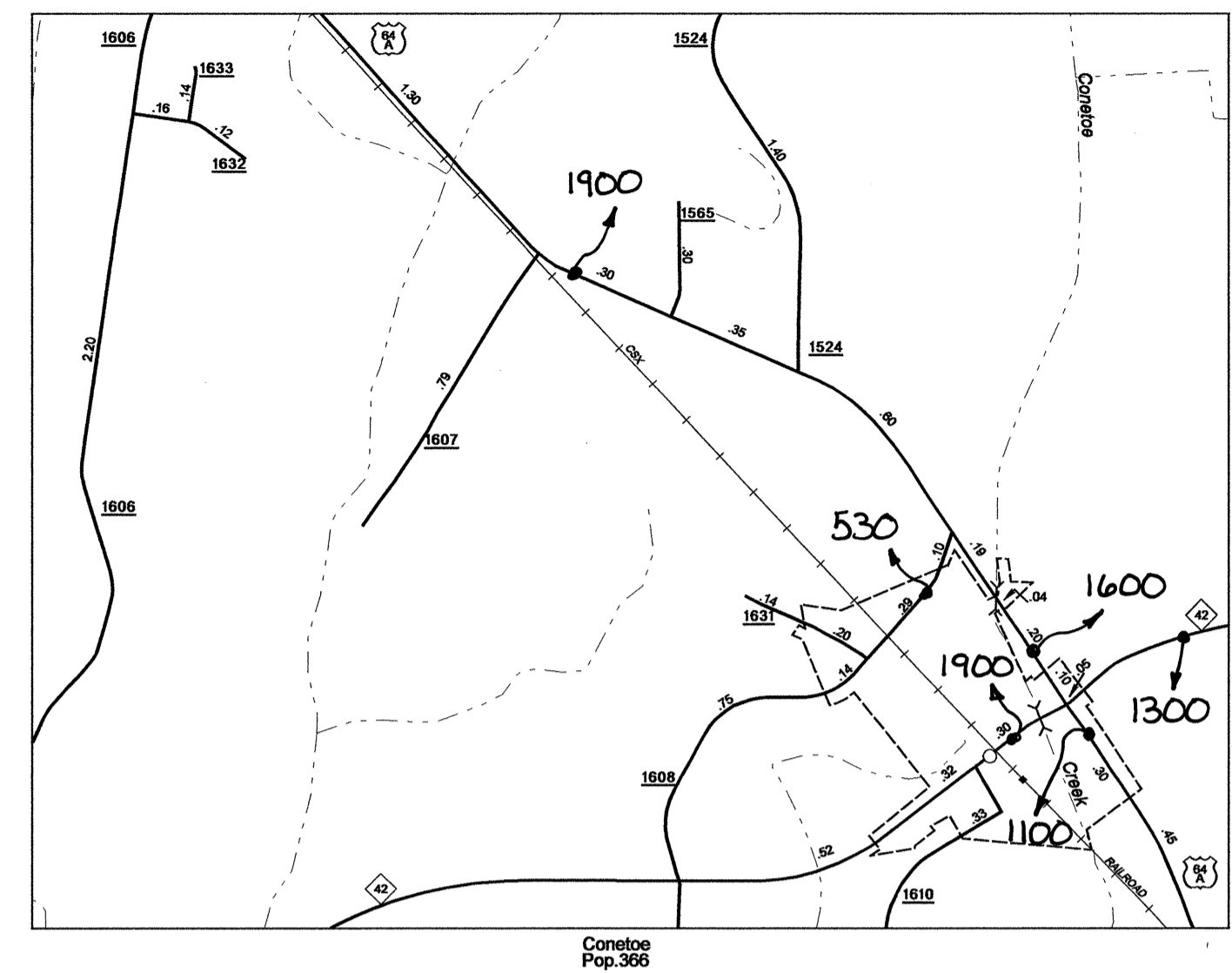
Disclaimer: The IMG Units goal is to provide the most accurate information as possible, the magnitude of the data prevents any guarantee of accuracy or completeness. If you find any information that is incorrect, please send your request to the IMG Unit.

COPIES OF THIS MAP ARE AVAILABLE
 FROM THE STATE ARCHIVES
 N.C. DEPARTMENT OF TRANSPORTATION
 ADDRESS:
 100 SOUTH SANDHILLS PLACE
 RALEIGH, N.C. 27610

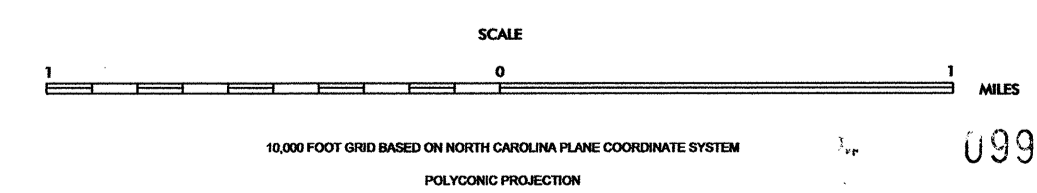
REVISION	DATE	DESCRIPTION
102201 MEM		
102202 MEM		
102203 MEM		
102204 MEM		
102205 MEM		
102206 MEM		
102207 MEM		
102208 MEM		
102209 MEM		
102210 MEM		
102211 MEM		
102212 MEM		
102213 MEM		
102214 MEM		
102215 MEM		
102216 MEM		
102217 MEM		
102218 MEM		
102219 MEM		
102220 MEM		
102221 MEM		
102222 MEM		
102223 MEM		
102224 MEM		
102225 MEM		
102226 MEM		
102227 MEM		
102228 MEM		
102229 MEM		
102230 MEM		
102231 MEM		
102232 MEM		
102233 MEM		
102234 MEM		
102235 MEM		
102236 MEM		
102237 MEM		
102238 MEM		
102239 MEM		
102240 MEM		
102241 MEM		
102242 MEM		
102243 MEM		
102244 MEM		
102245 MEM		
102246 MEM		
102247 MEM		
102248 MEM		
102249 MEM		
102250 MEM		



Rocky Mount
POP. 56,160



2008 AADT
 ANNUAL AVERAGE DAILY TRAFFIC
EDGECOMBE COUNTY
 NORTH CAROLINA
 GENERATED BY THE
TRAFFIC SURVEY GROUP
 TRANSPORTATION PLANNING BRANCH
 STATE MAPPING PREPARED BY
 NORTH CAROLINA DEPARTMENT OF TRANSPORTATION
 STATE ROAD MAINTENANCE UNIT
 MAPPING & INFORMATION SECTION
 IN COOPERATION WITH THE
 U.S. DEPARTMENT OF TRANSPORTATION
 FEDERAL HIGHWAY ADMINISTRATION



U99