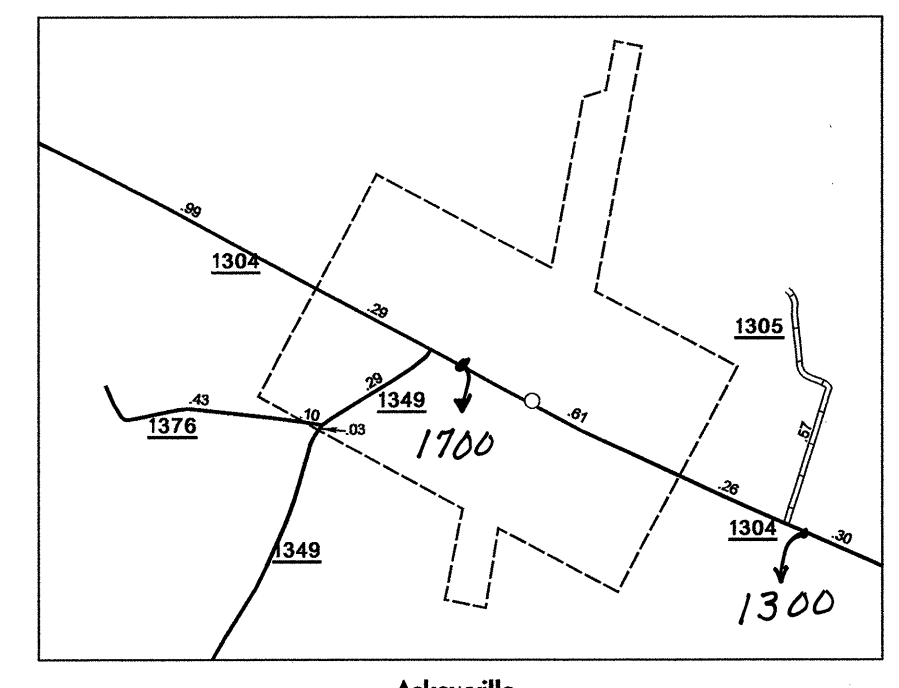
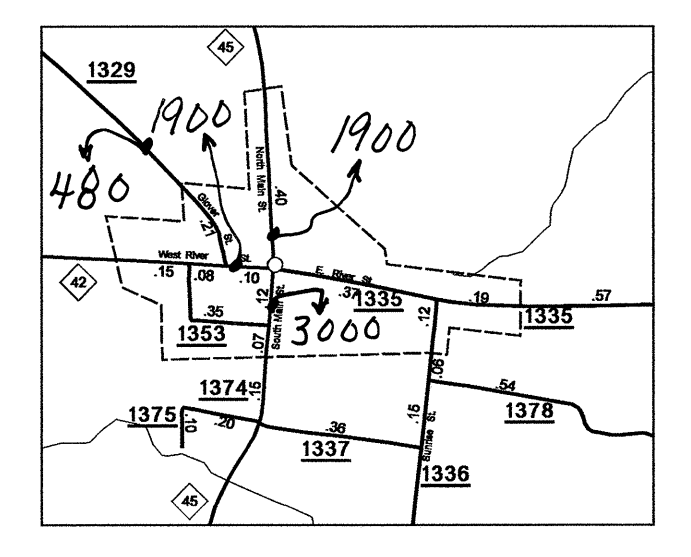


DISCLAIMER: The IMG Unit's goal is to provide the most accurate information as possible, the magnitude of the data prevents any guarantee of accuracy or completeness. If you find any information that is incorrect, please send your request to the IMG Unit.
 COURTESY OF THE MAP AVAILABLE
 SUPPLY
 BERTIE COUNTY
 REVISED
 02/2008 BDC
 10/2008 ELO
 01/2008 RLN

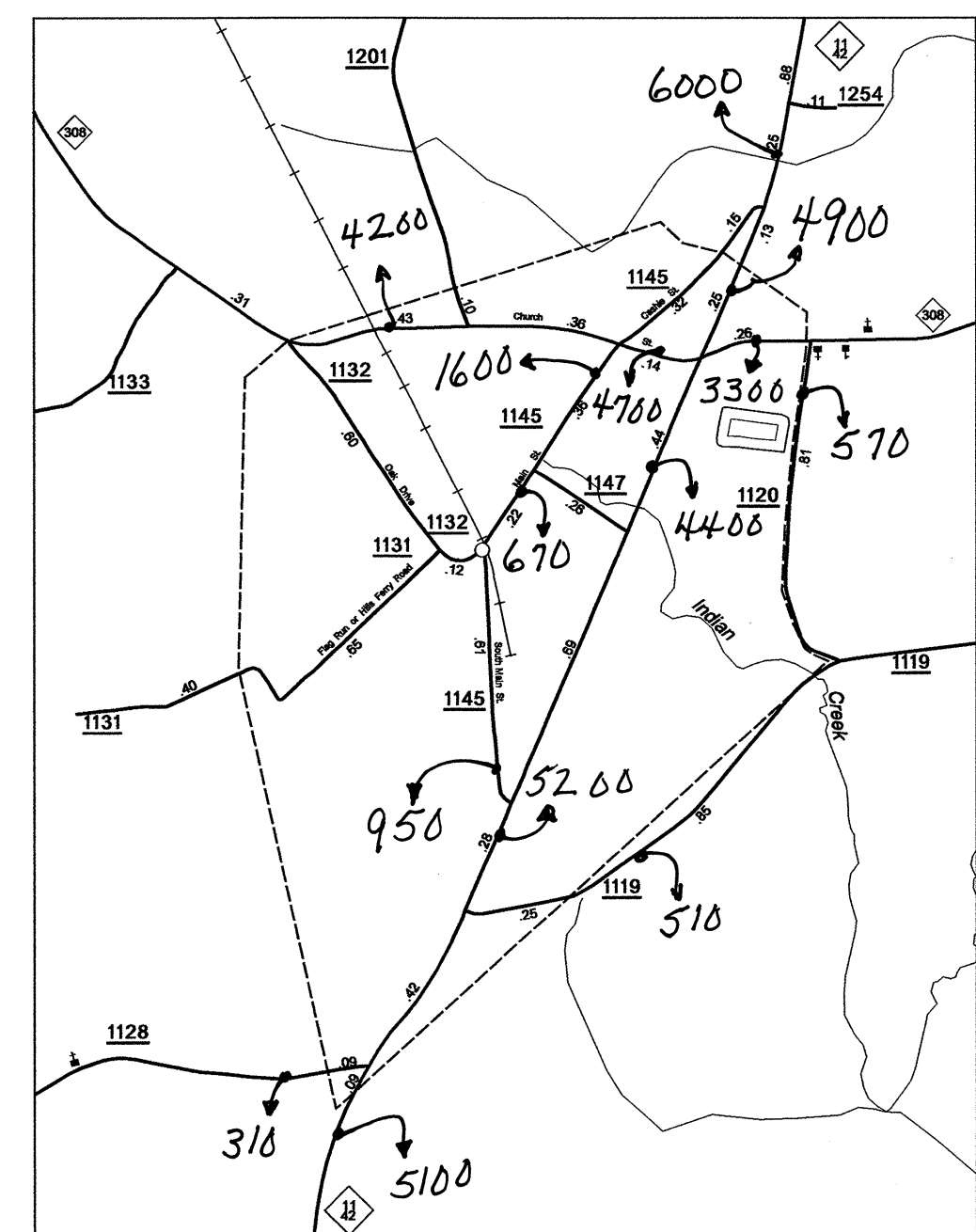
The IMG Unit's goal is to provide the most accurate information as possible, the magnitude of the data prevents any guarantee of accuracy or completeness. If you find any information that is incorrect, please send your request to the IMG Unit.



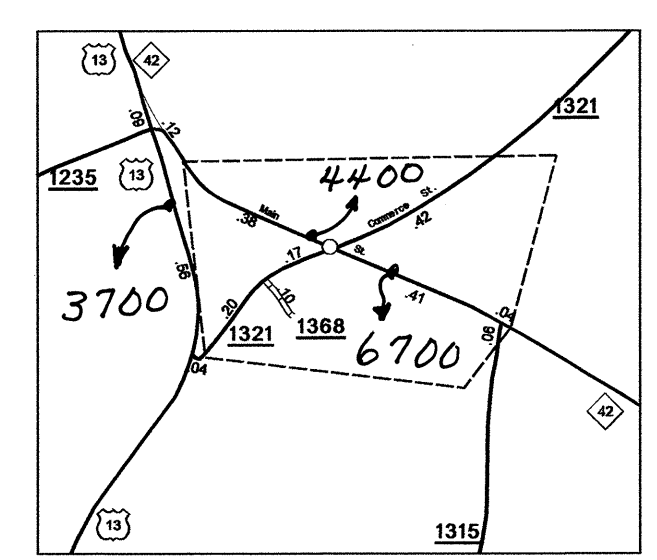
Askewville
pop. 177



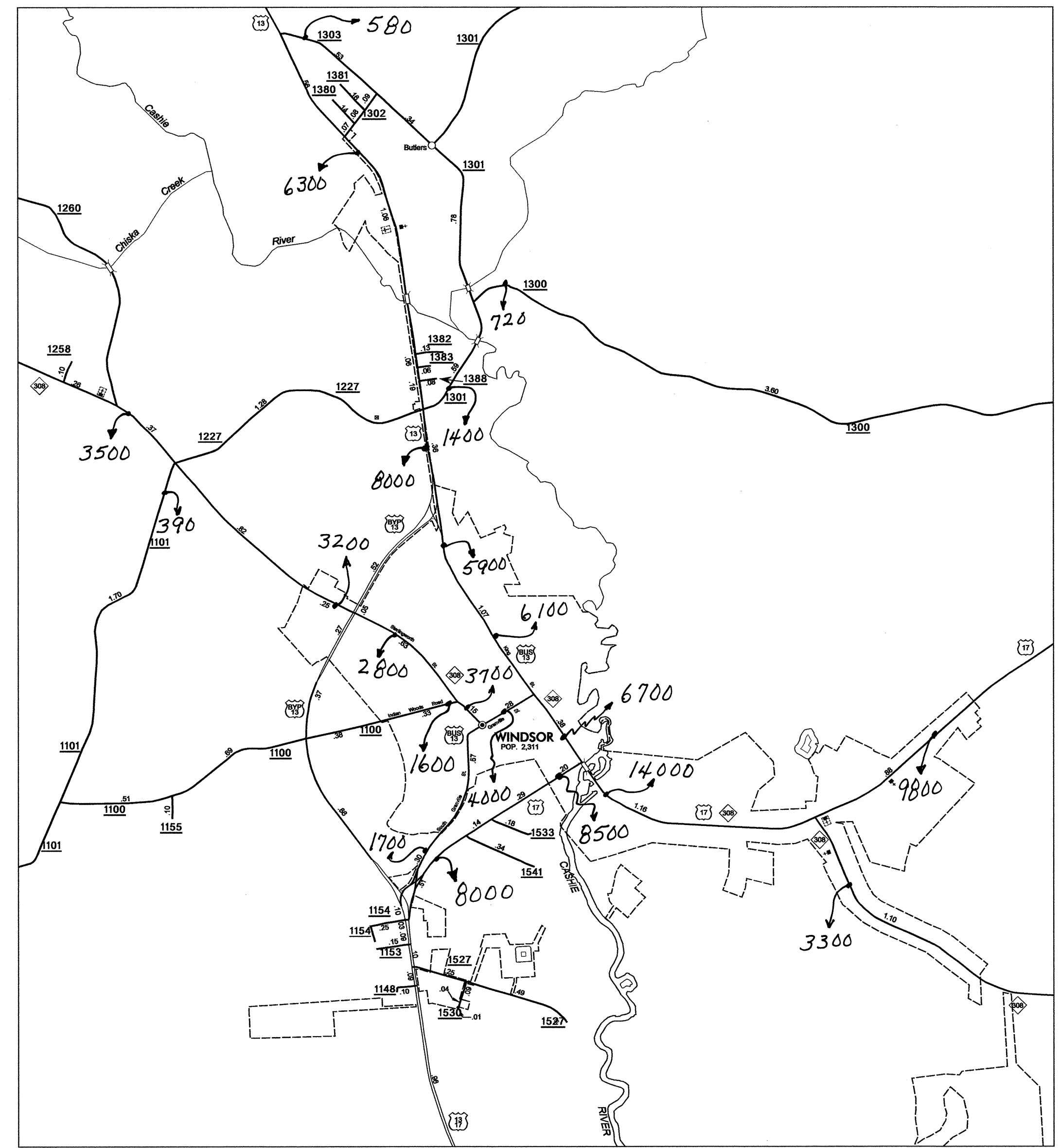
Colerain
pop. 220



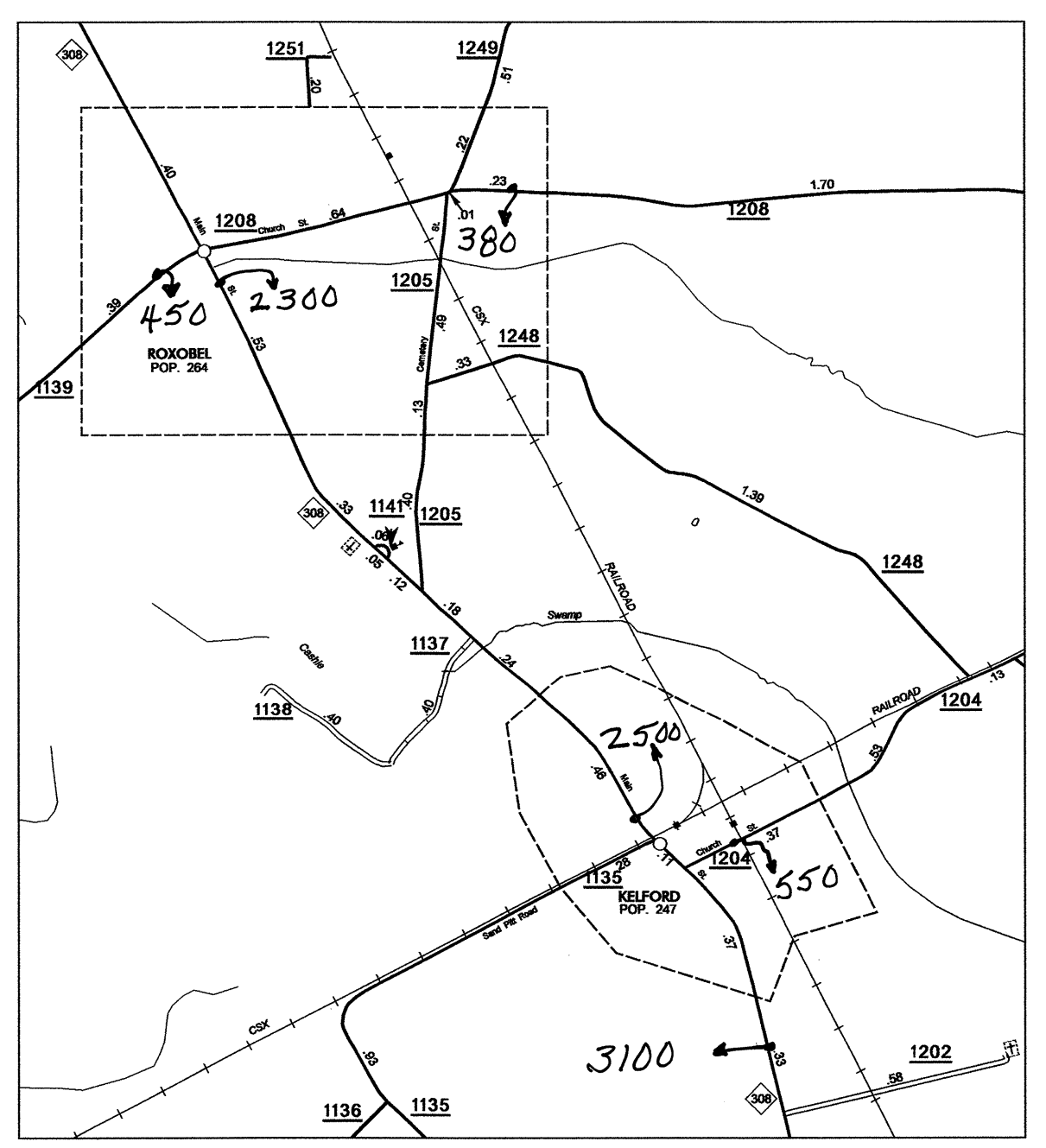
Lewiston Woodville
pop. 626



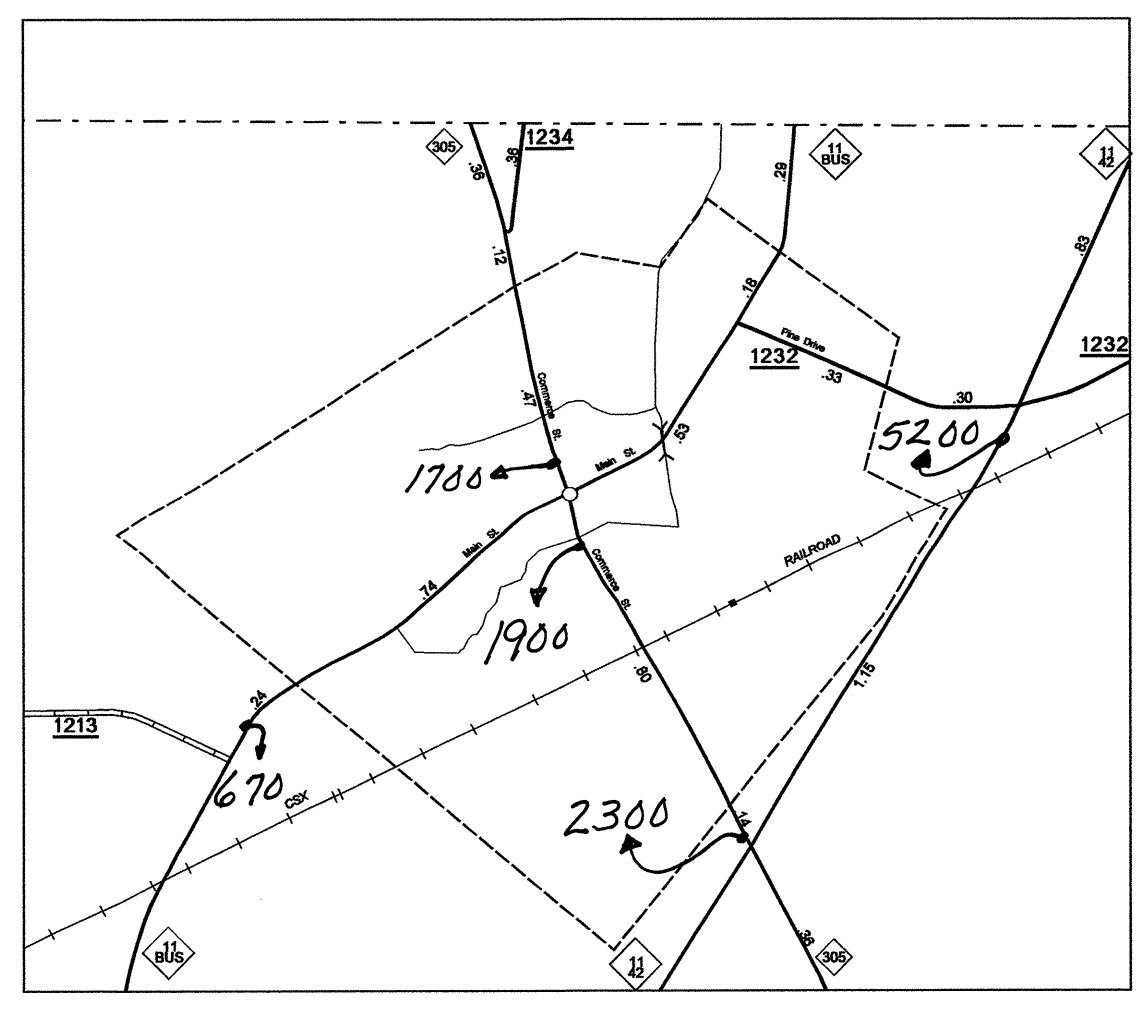
Powellsville
pop. 269



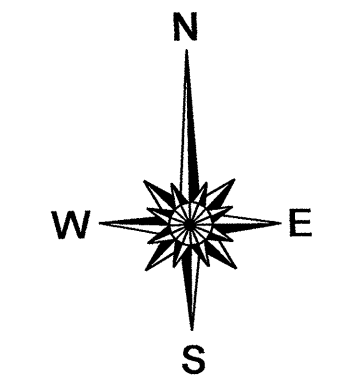
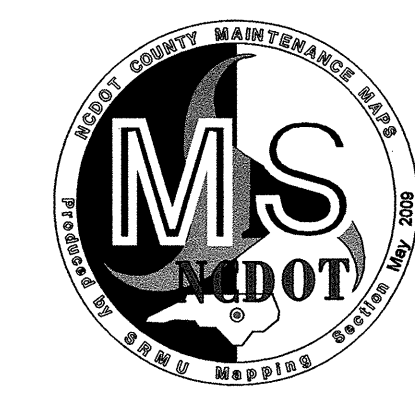
Windsor
pop. 2,311



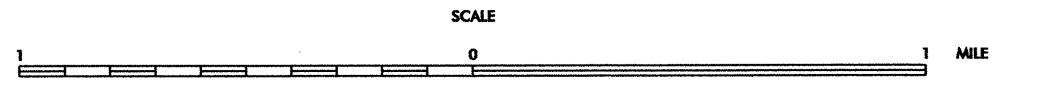
Roxobel
pop. 347



Aulander
pop. 470



2008 AADT
 ANNUAL AVERAGE DAILY TRAFFIC
BERTIE COUNTY
 NORTH CAROLINA
 GENERATED BY THE
TRAFFIC SURVEY GROUP
 TRANSPORTATION PLANNING BRANCH
 BASE MAPPING PREPARED BY
 NORTH CAROLINA DEPARTMENT OF TRANSPORTATION
 STATE ROAD MAINTENANCE UNIT
 MAPPING & INFORMATION SECTION
 IN COOPERATION WITH THE
 U.S. DEPARTMENT OF TRANSPORTATION
 FEDERAL HIGHWAY ADMINISTRATION



10,000 FOOT GRID BASED ON NORTH CAROLINA PLANE COORDINATE SYSTEM
 POLYCONIC PROJECTION