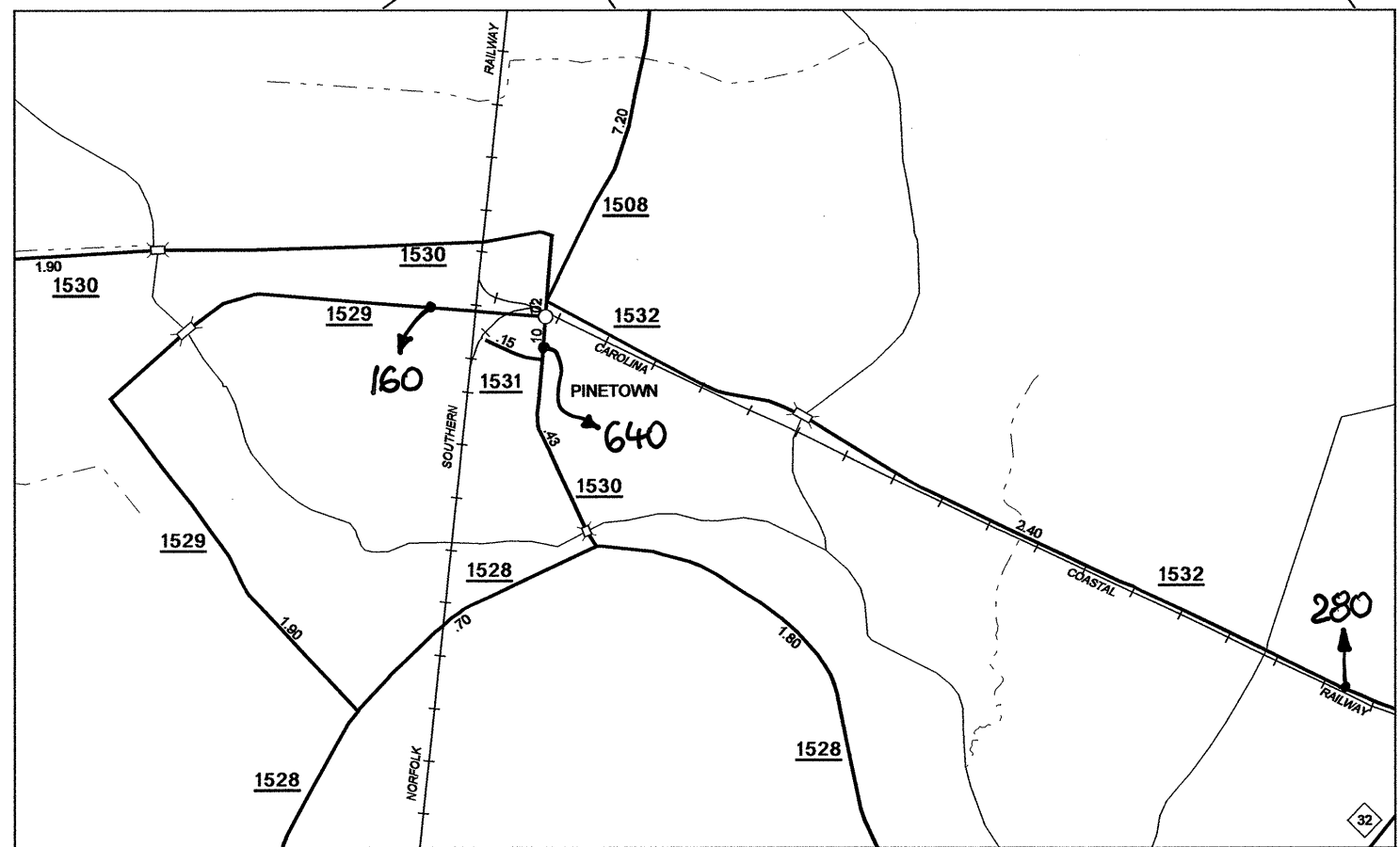
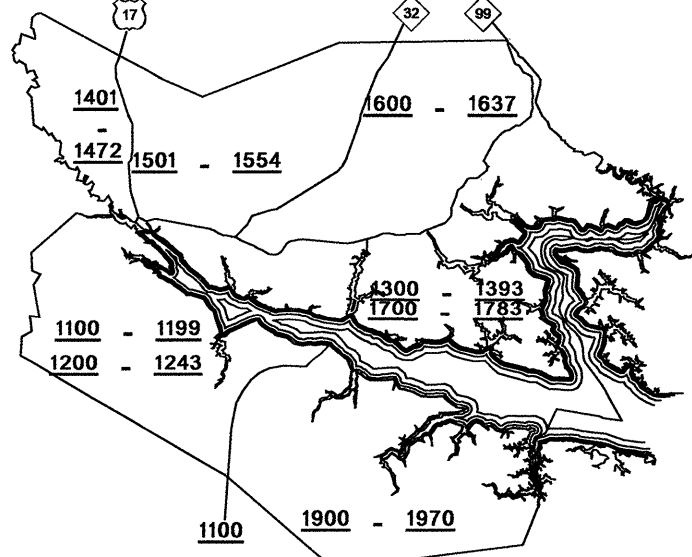


Disclaimer: The IMG Unit's goal is to provide the most accurate information as possible, the magnitude of the data prevents any guarantee of accuracy or completeness. If you find any information that is incorrect, please send your request to the IMG Unit.



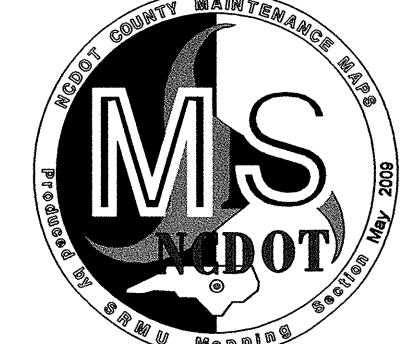
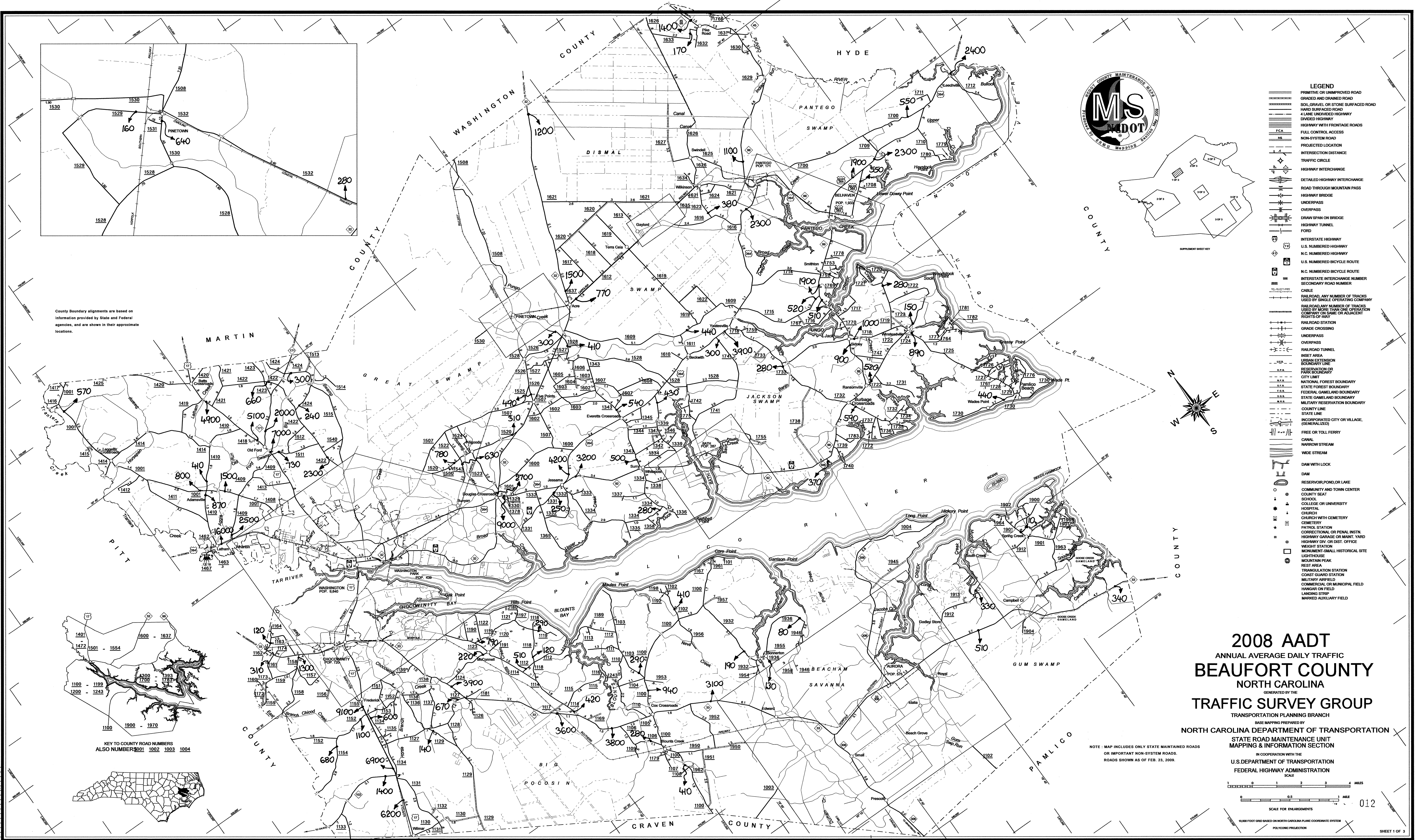
County Boundary alignments are based on information provided by State and Federal agencies, and are shown in their approximate locations.



KEY TO COUNTY ROAD NUMBERS  
ALSO NUMBERED 1001 1002 1003 1004

REVISED
3/8/07 MRG
5/20/07 MG
6/8/07 MG
11/16/07 MG
5/20/08 MG
2/23/09 MG

BEAUFORT



- LEGEND**
- FRONTIER OR UNIMPROVED ROAD
  - GRADED AND DRAINED ROAD
  - SOIL, GRAVEL OR STONE SURFACED ROAD
  - HARD SURFACED ROAD
  - 4 LANE UNDIVIDED HIGHWAY
  - DIVIDED HIGHWAY
  - HIGHWAY WITH FRONTAGE ROADS
  - FULL CONTROL ACCESS
  - NON-SYSTEM ROAD
  - PROJECTION LOCATION
  - INTERSECTION DISTANCE
  - TRAFFIC CIRCLE
  - HIGHWAY INTERCHANGE
  - DETAILED HIGHWAY INTERCHANGE
  - ROAD THROUGH MOUNTAIN PASS
  - HIGHWAY BRIDGE
  - UNDERPASS
  - OVERPASS
  - DRAW SPAN OR BRIDGE
  - HIGHWAY TUNNEL
  - FORD
  - INTERSTATE HIGHWAY
  - U.S. NUMBERED HIGHWAY
  - N.C. NUMBERED HIGHWAY
  - U.S. NUMBERED BICYCLE ROUTE
  - N.C. NUMBERED BICYCLE ROUTE
  - INTERSTATE INTERCHANGE NUMBER
  - SECONDARY ROAD NUMBER
  - CABLE
  - RAILROAD ANY NUMBER OF TRACKS USED BY SINGLE OPERATING COMPANY
  - RAILROAD ANY NUMBER OF TRACKS USED BY MORE THAN ONE OPERATING COMPANY ON SAME OR ADJACENT RIGHTS-OF-WAY
  - RAILROAD STATION
  - RAILROAD CROSSING
  - UNDERPASS
  - OVERPASS
  - RAILROAD TUNNEL
  - INSET AREA
  - URBAN EXTENSION
  - RESERVATION OR PARK BOUNDARY
  - CITY LIMIT
  - NATIONAL FOREST BOUNDARY
  - STATE FOREST BOUNDARY
  - FEDERAL GAMELAND BOUNDARY
  - STATE GAMELAND BOUNDARY
  - MILITARY RESERVATION BOUNDARY
  - COUNTY LINE
  - STATE LINE
  - INCORPORATED CITY OR VILLAGE (GENERALIZED)
  - FREE OR TOLL FERRY
  - CANAL
  - NARROW STREAM
  - WIDE STREAM
  - DAM WITH LOCK
  - DAM
  - RESERVOIR, POND, OR LAKE
  - COUNTY AND TOWN CENTER
  - COUNTY SEAT
  - SCHOOL
  - COLLEGE OR UNIVERSITY
  - HOSPITAL
  - CHURCH
  - CHURCH WITH CEMETERY
  - CEMETERY
  - PATROL STATION
  - CORRECTIONAL OR PENAL INSTN.
  - HIGHWAY GARAGE OR MANTY. YARD
  - HIGHWAY DIV. OR DIST. OFFICE
  - WEIGHT STATION
  - MONUMENT SMALL HISTORICAL SITE
  - LIGHTHOUSE
  - MOUNTAIN PEAK
  - REST AREA
  - TRIANGULATION STATION
  - COAST GUARD STATION
  - MILITARY AIRFIELD
  - COMMERCIAL OR MUNICIPAL FIELD
  - HANGAR ON FIELD
  - LANDING STRIP
  - MARKED AUXILIARY FIELD

**2008 AADT**  
ANNUAL AVERAGE DAILY TRAFFIC  
**BEAUFORT COUNTY**  
NORTH CAROLINA  
GENERATED BY THE  
**TRAFFIC SURVEY GROUP**  
TRANSPORTATION PLANNING BRANCH

BASE MAPPING PREPARED BY  
**NORTH CAROLINA DEPARTMENT OF TRANSPORTATION**  
STATE ROAD MAINTENANCE UNIT  
MAPPING & INFORMATION SECTION  
IN COOPERATION WITH THE  
**U.S. DEPARTMENT OF TRANSPORTATION**  
FEDERAL HIGHWAY ADMINISTRATION

NOTE: MAP INCLUDES ONLY STATE MAINTAINED ROADS OR IMPORTANT NON-SYSTEM ROADS. ROADS SHOWN AS OF FEB. 23, 2009.

SCALE FOR ENLARGEMENTS  
0 0.5 1 2 3 4 MILES

SCALE FOR ENLARGEMENTS  
0 0.5 1 2 3 4 MILES

16,000 FOOT GRID BASED ON NORTH CAROLINA PLANE COORDINATE SYSTEM  
POLYCONIC PROJECTION

012

SHEET 1 OF 3