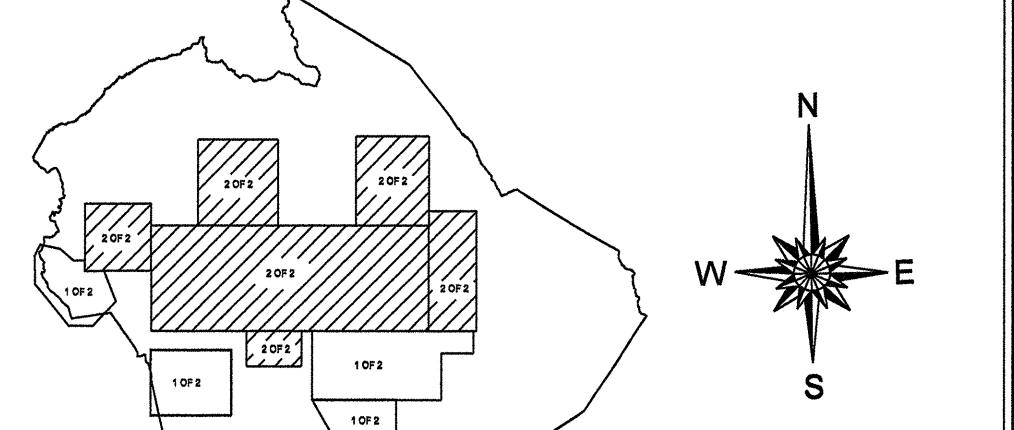
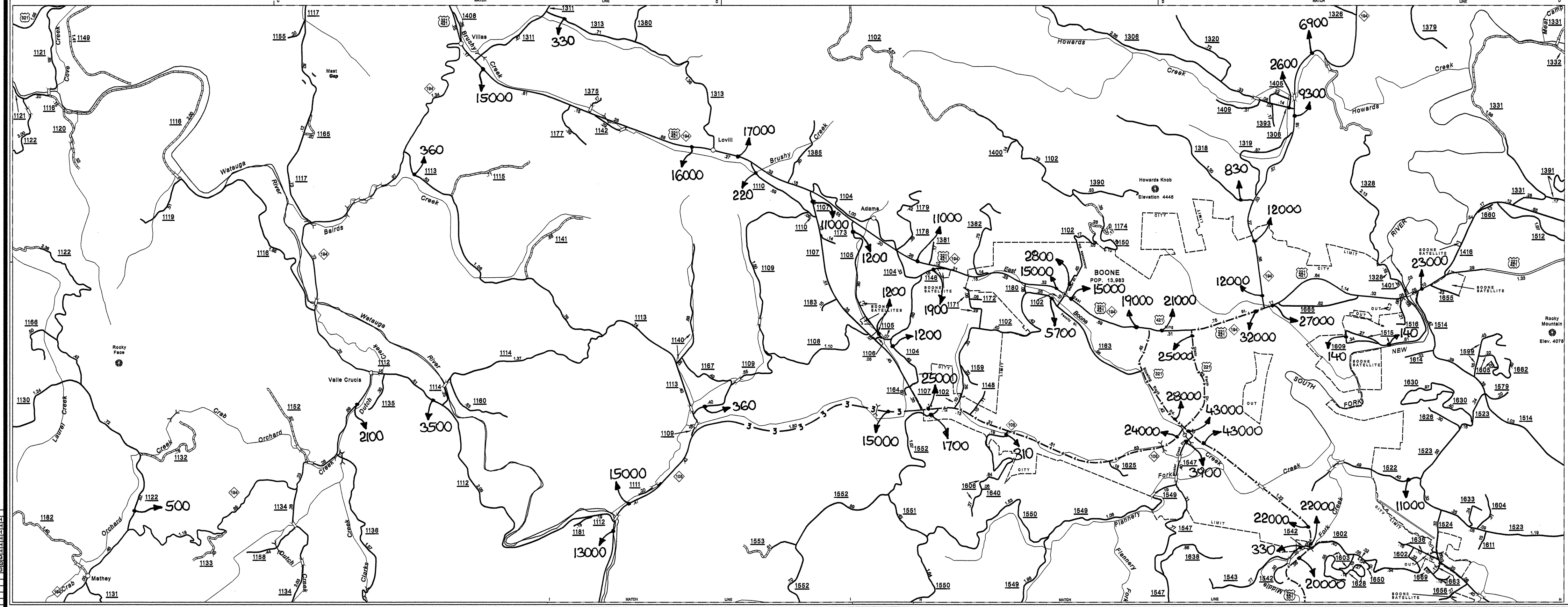
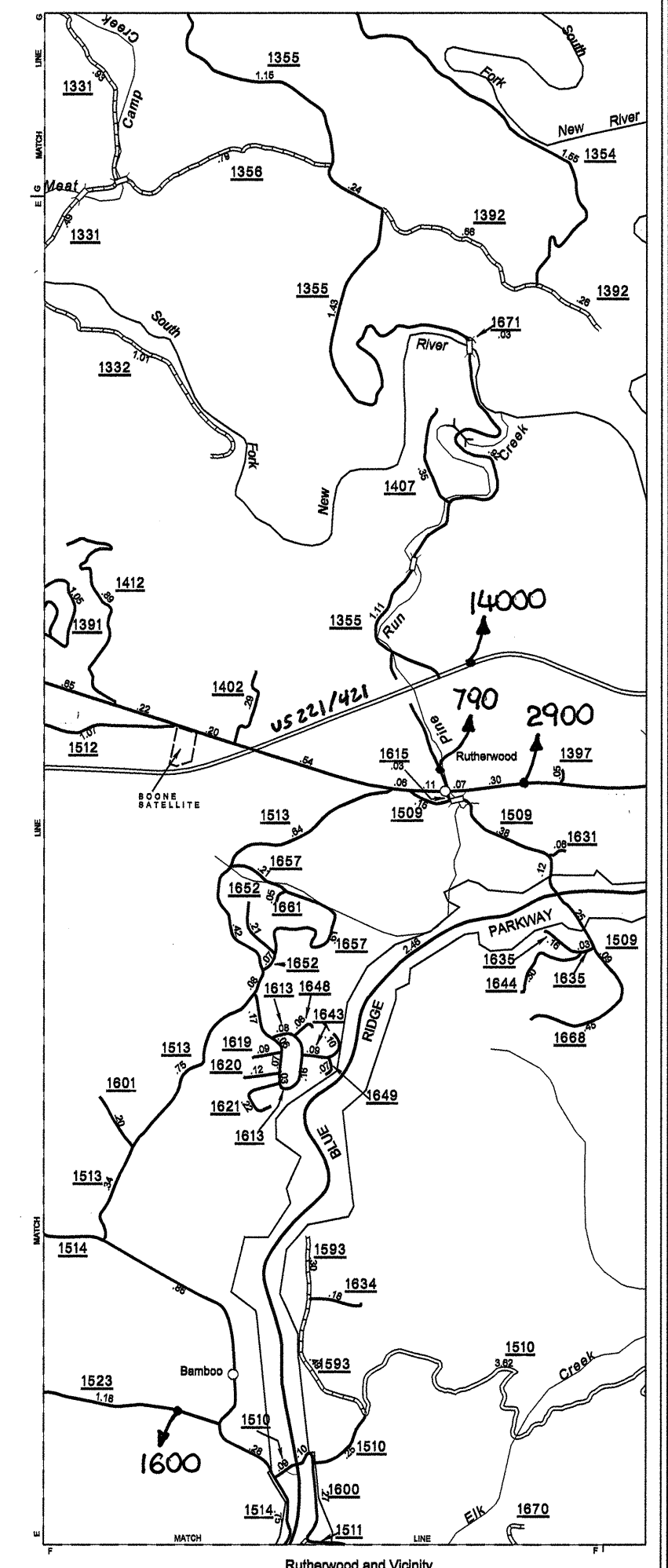
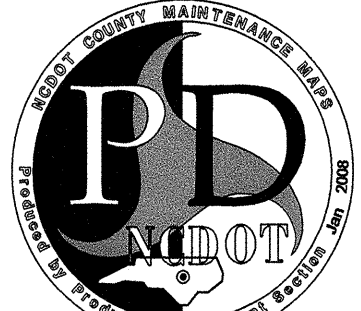
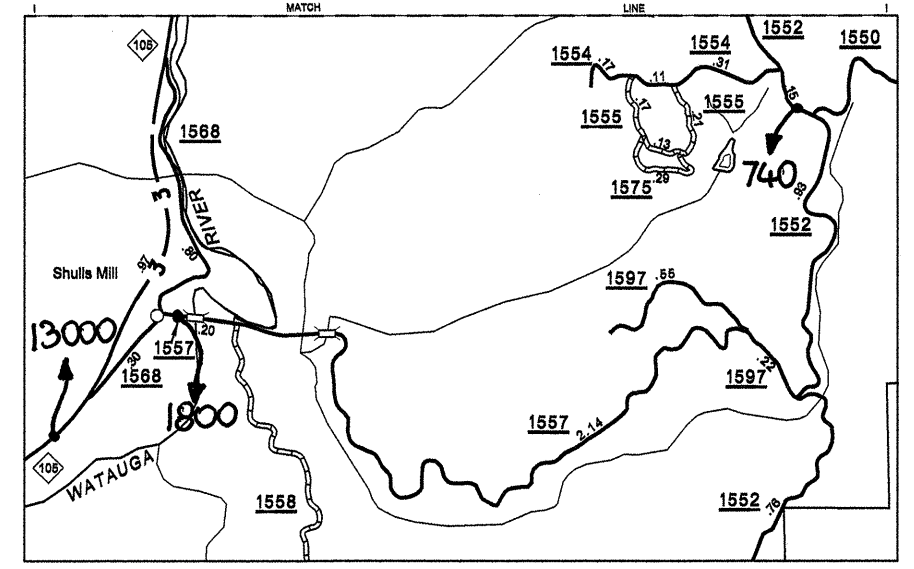
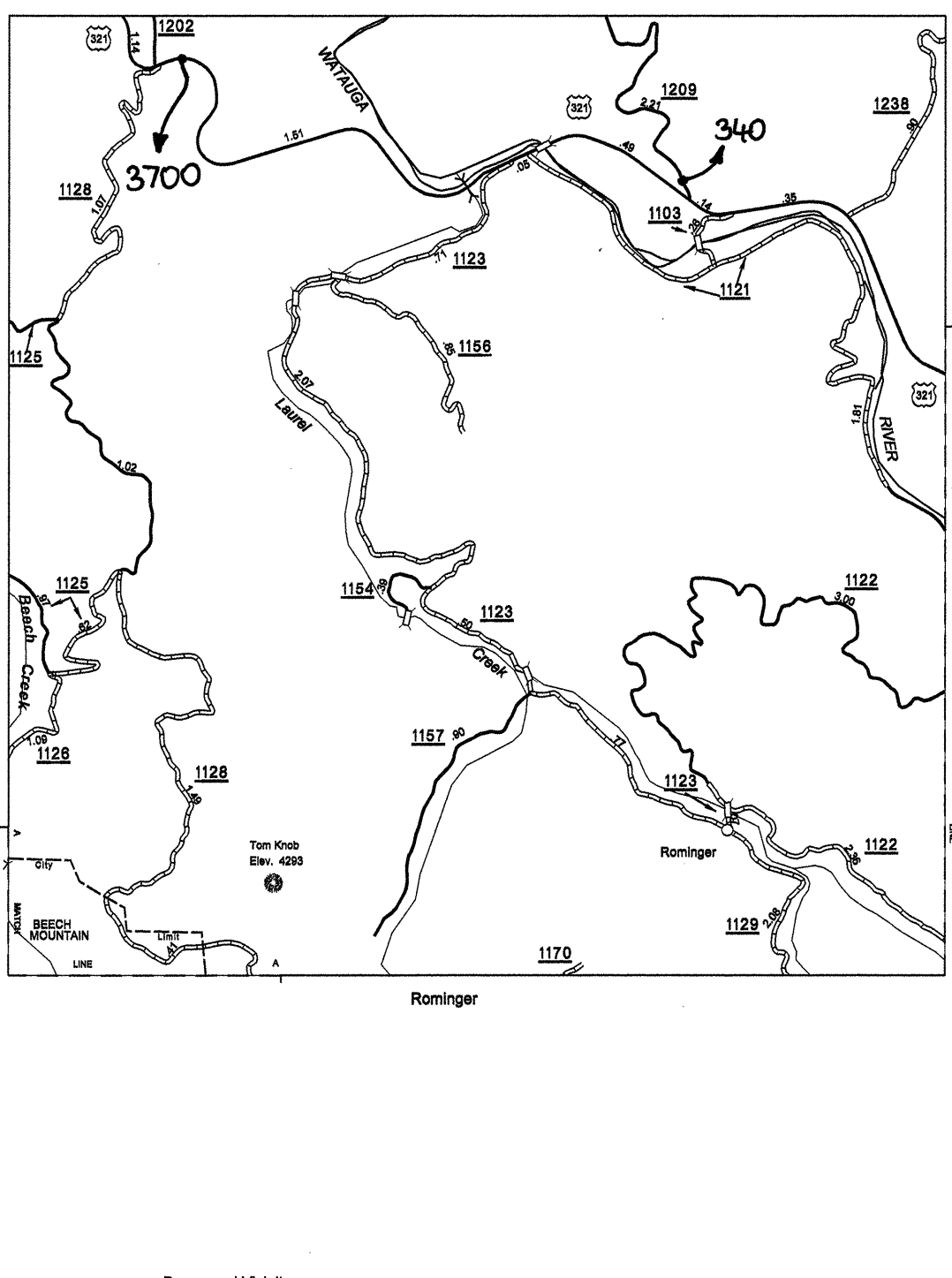
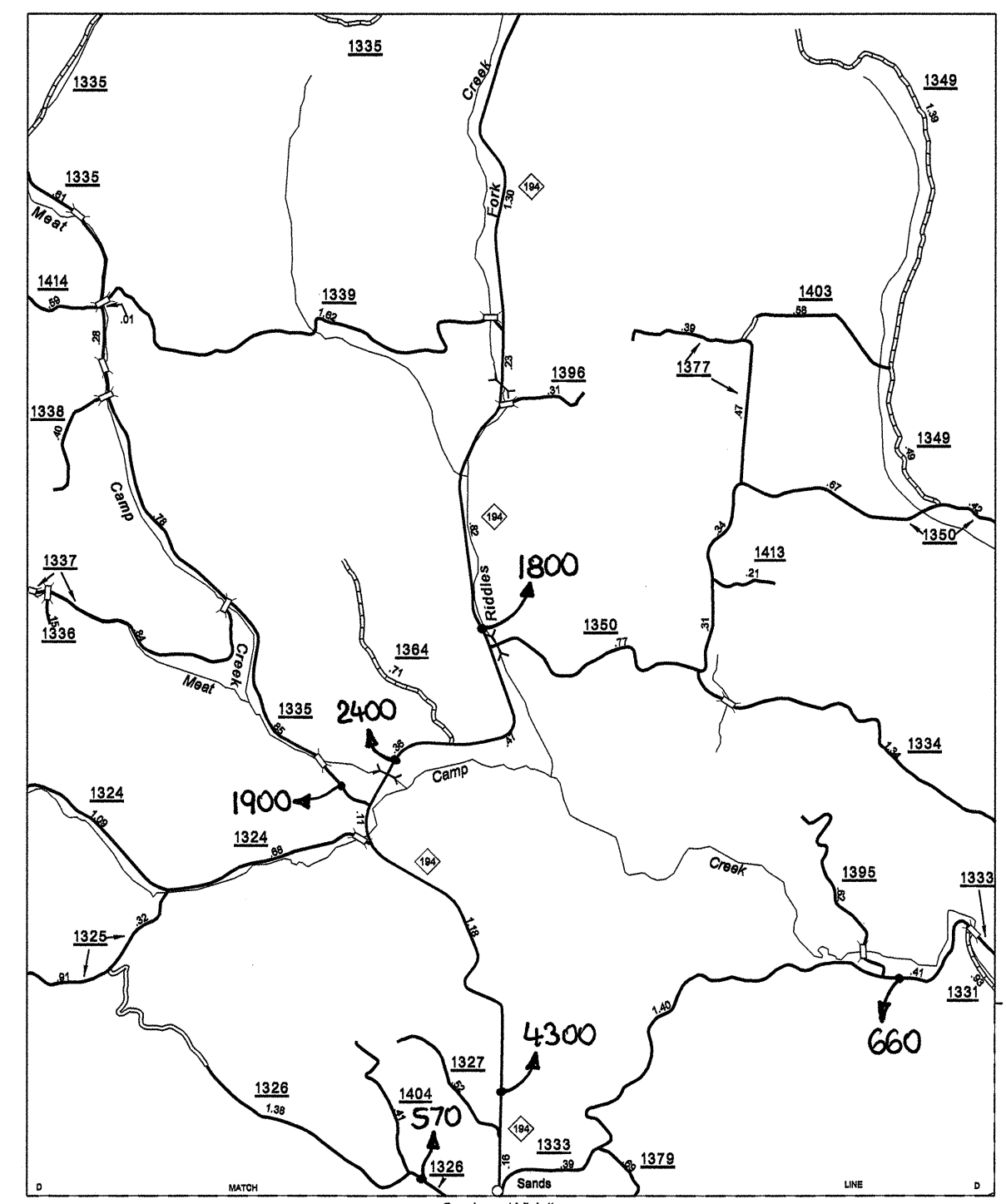
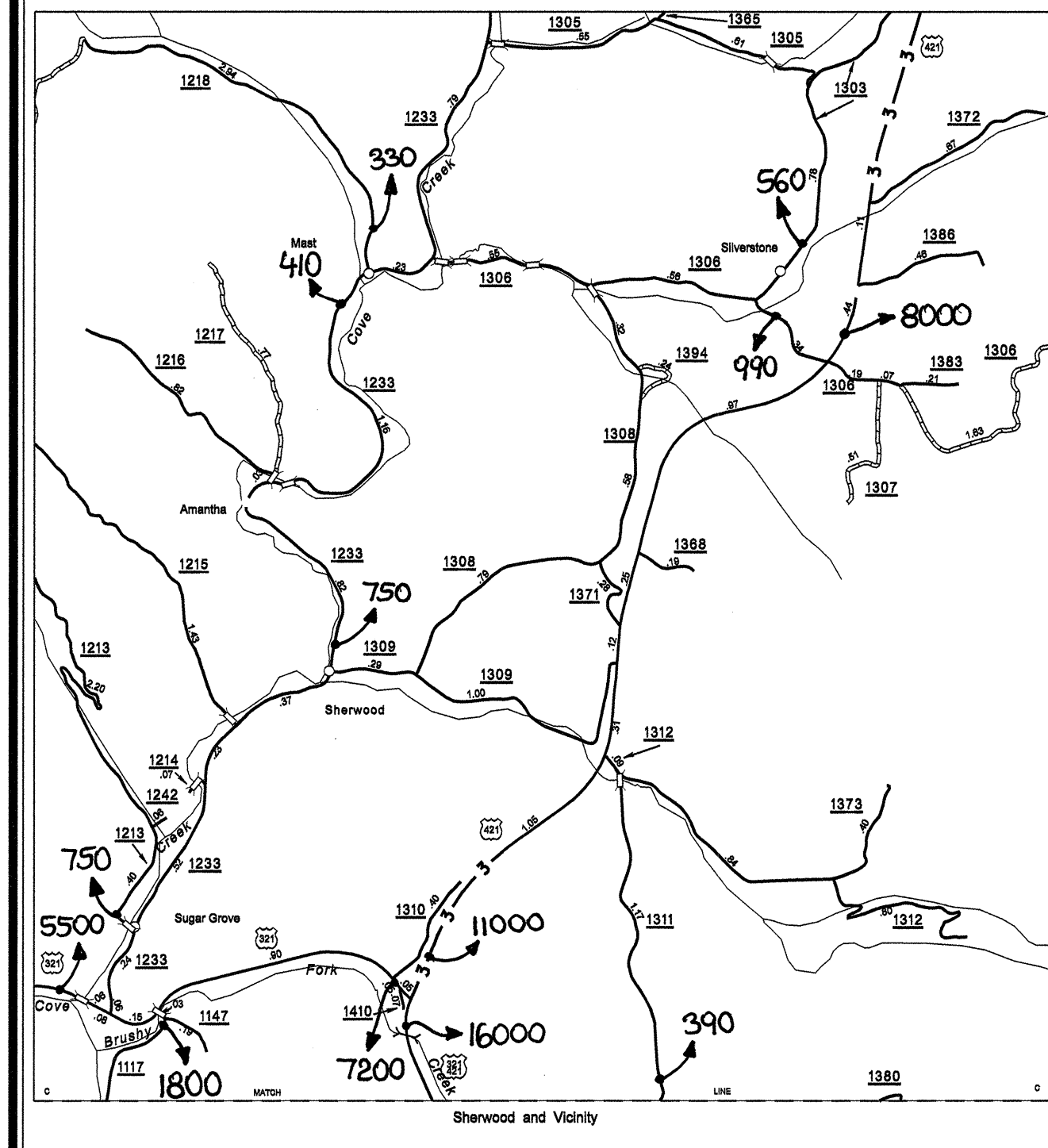


Disclaimer: The IMG Unit's goal is to provide the most accurate information as possible, the magnitude of the data prevents any guarantee of accuracy or completeness. If you find any information that is incorrect, please send your request to the IMG Unit.

COPIES OF THIS MAP ARE AVAILABLE AT A FORMAL COST.
ADDRESS:
N.C. DEPARTMENT OF TRANSPORTATION
INFORMATION TECHNOLOGY AND GRAPHICS
DIVISION
11170000 BLDG
42007 BOB
RALEIGH, N.C. 27601

REVISED
8/31/00 JCH
12/10/01 JCH
8/18/02 JCH
11/28/03 JCH
10/28/04 JCH
08/04/05 JCH
8/20/06 BCB
11/30/06 BCB
4/23/07 BCB

SHP-1
WATAUGA



ENLARGED MUNICIPAL AND SUBURBAN AREAS
2007 AADT
ANNUAL AVERAGE DAILY TRAFFIC
WATAUGA COUNTY
NORTH CAROLINA
GENERATED BY THE
TRAFFIC SURVEY GROUP
TRANSPORTATION PLANNING BRANCH
PREPARED BY THE
NORTH CAROLINA DEPARTMENT OF TRANSPORTATION
INFORMATION TECHNOLOGY - IMG UNIT
IN COOPERATION WITH THE
U.S. DEPARTMENT OF TRANSPORTATION
FEDERAL HIGHWAY ADMINISTRATION
SCALE 1 MILE
10,000 FOOT GRID BASED ON NORTH CAROLINA PLANE COORDINATE SYSTEM
POLYCONIC PROJECTION
SHEET 2 OF 2