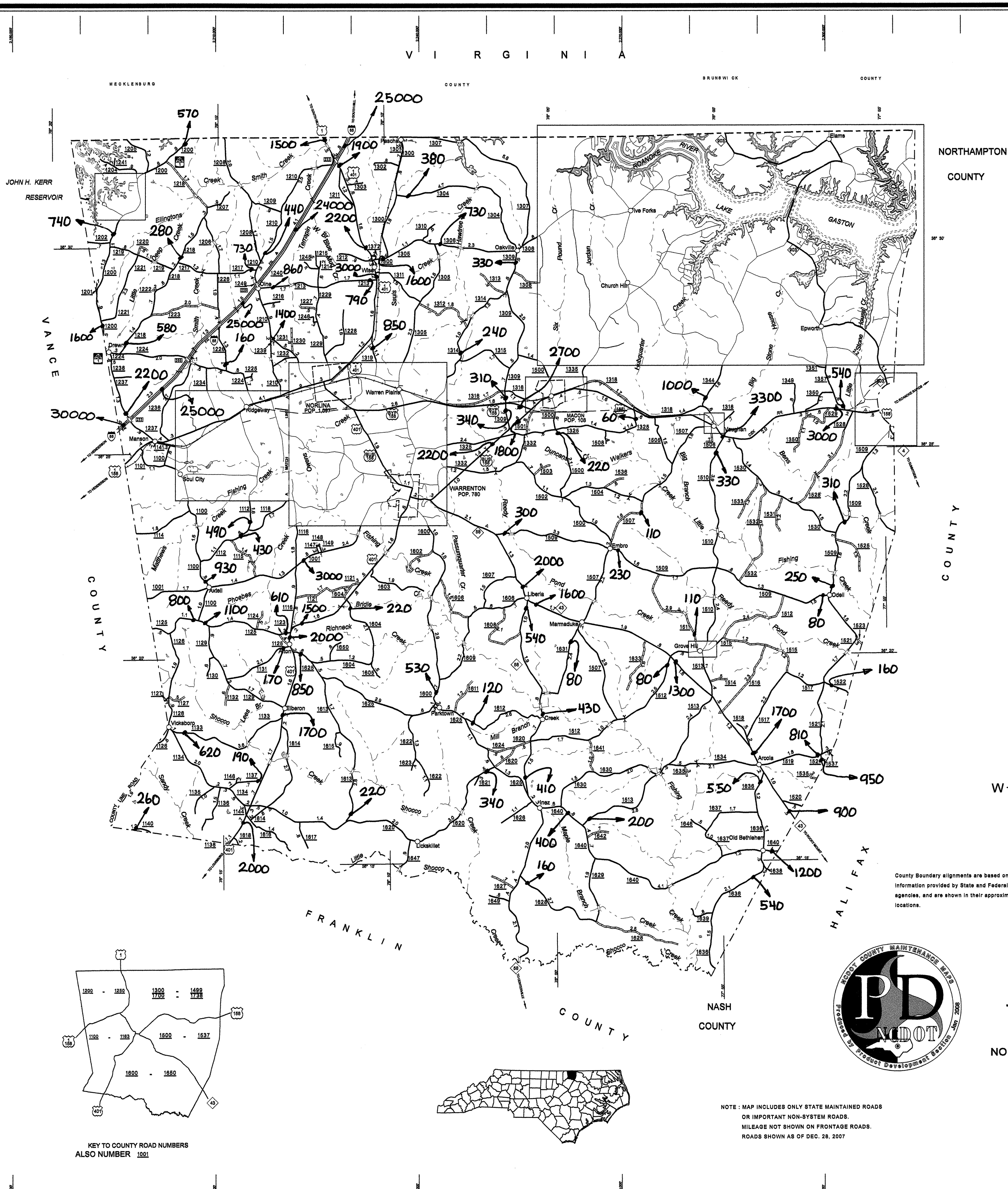
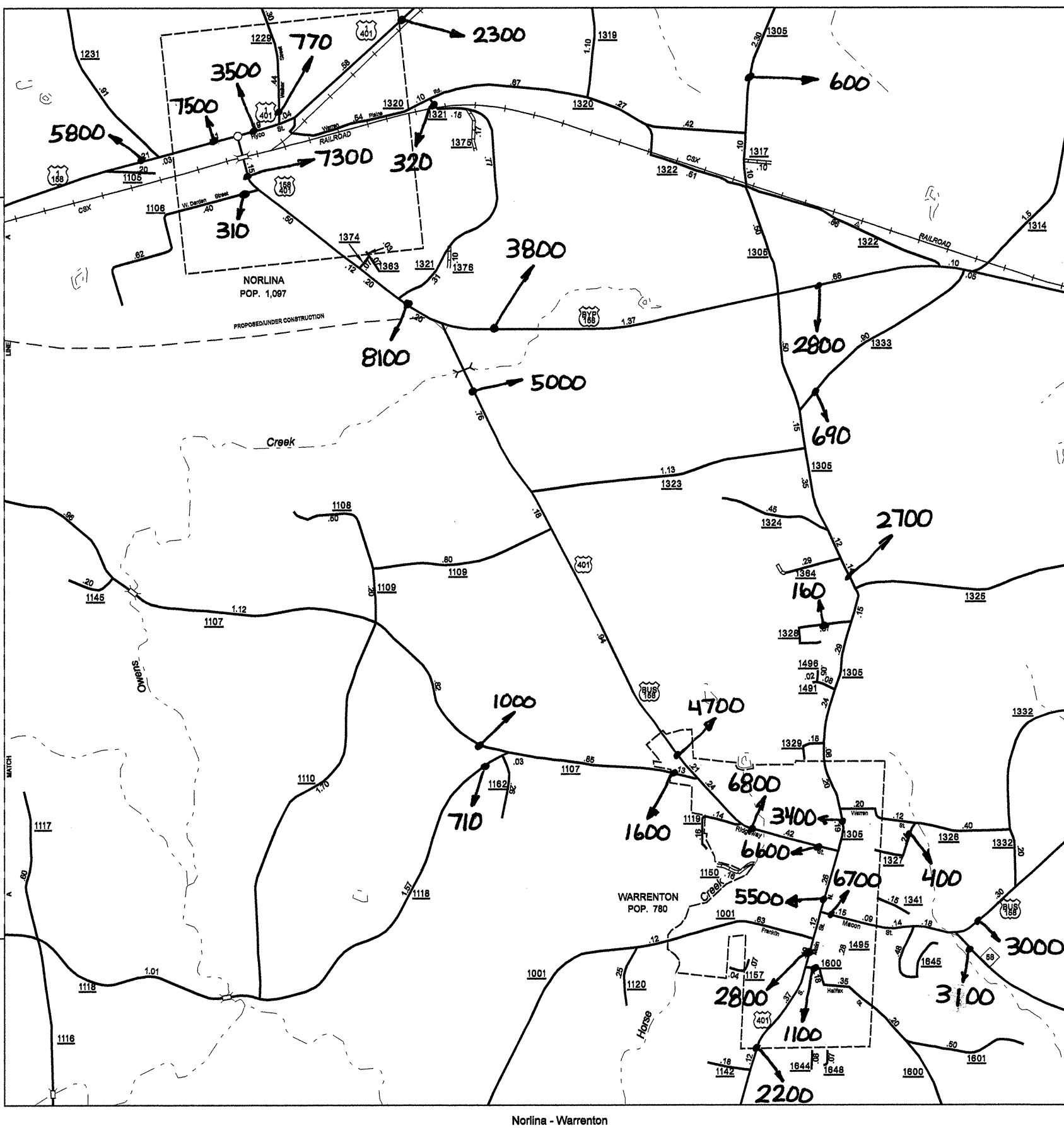
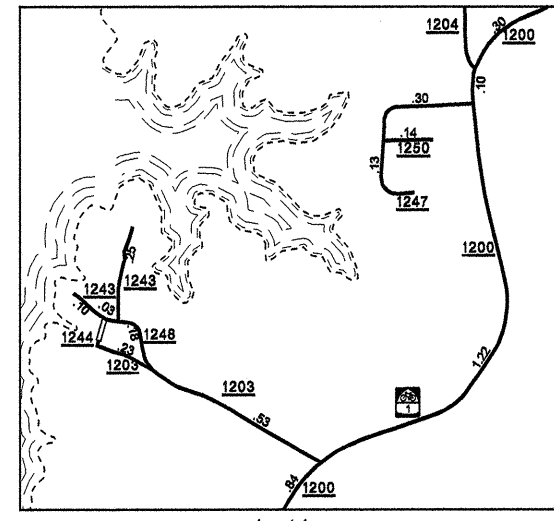
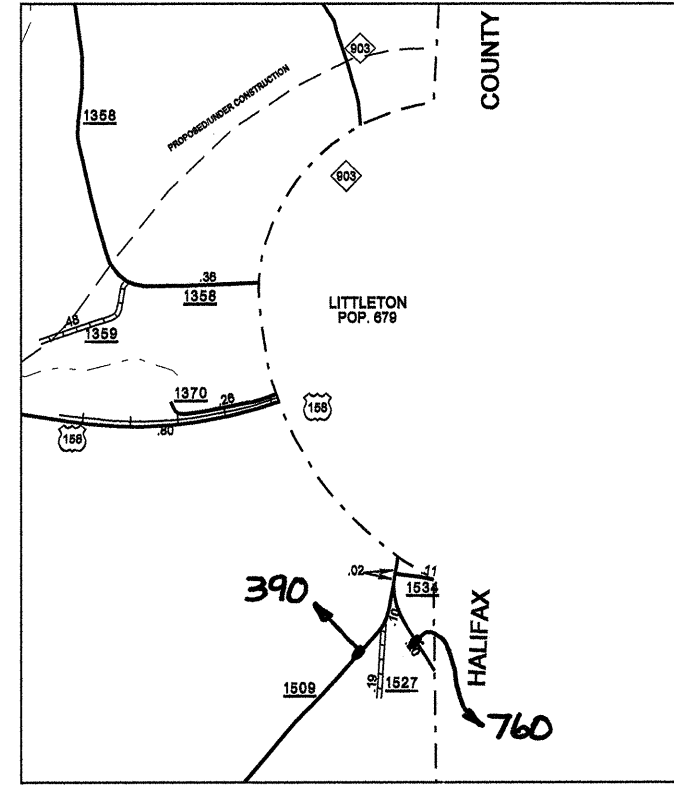
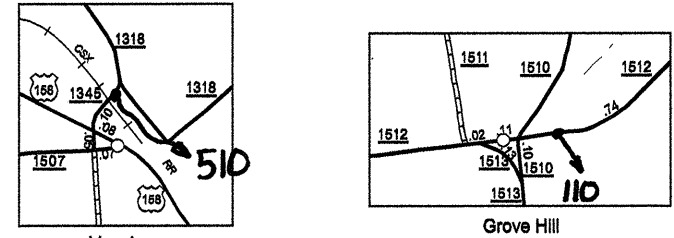
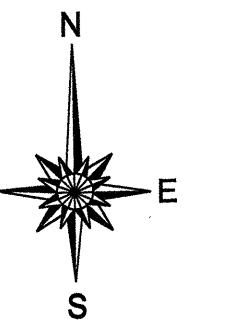


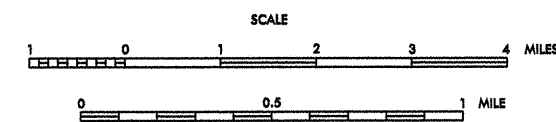
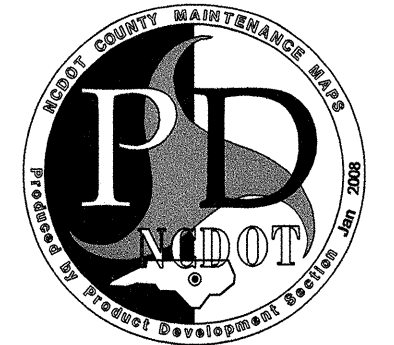
Disclaimer: The GIS Unit's goal is to provide the most accurate information as possible, the magnitude of the data prevents any guarantee of accuracy or completeness. If you find any information that is incorrect, please send your request to the GIS Unit.



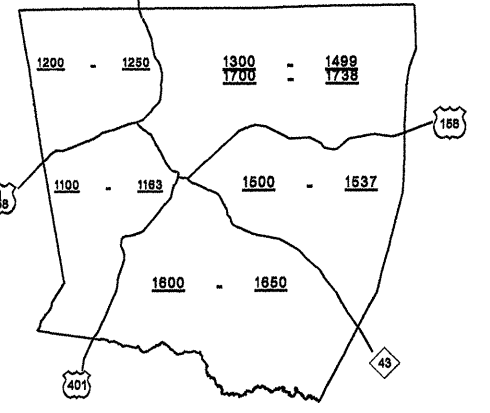
- PRIMITIVE OR UNIMPROVED ROAD
- GRADED AND DRAINED ROAD
- SOIL GRAVEL OR STONE SURFACED ROAD
- HARD SURFACED ROAD
- 4 LANE UNDIVIDED HIGHWAY
- DIVIDED HIGHWAY
- HIGHWAY WITH FRONTAGE ROADS
- FULL CONTROL ACCESS
- NON-SYSTEM ROAD
- PROJECTED LOCATION
- INTERSECTION DISTANCE
- TRAFFIC CIRCLE
- HIGHWAY INTERCHANGE
- DETAILED HIGHWAY INTERCHANGE
- ROAD THROUGH MOUNTAIN PASS
- HIGHWAY BRIDGE
- UNDERPASS
- OVERPASS
- DRAW SPAN ON BRIDGE
- HIGHWAY TUNNEL
- FORD
- INTERSTATE HIGHWAY
- U.S. NUMBERED HIGHWAY
- N.C. NUMBERED HIGHWAY
- U.S. NUMBERED BICYCLE ROUTE
- N.C. NUMBERED BICYCLE ROUTE
- INTERSTATE INTERCHANGE NUMBER
- SECONDARY ROAD NUMBER
- CABLE
- RAILROAD, ANY NUMBER OF TRACKS
- RAILROAD, ANY NUMBER OF TRACKS USED BY SINGL OPERATING COMPANY
- RAILROAD, ANY NUMBER OF TRACKS USED BY MORE THAN ONE OPERATING COMPANY ON SAME OR ADJACENT RIGHTS-OF-WAY
- RAILROAD STATION
- GRADE CROSSING
- UNDERPASS
- OVERPASS
- RAILROAD TUNNEL
- INSET AREA
- URBAN EXTENSION
- BOUNDARY LINE
- RESERVATION OR PARK BOUNDARY
- CITY LIMIT
- NATIONAL FOREST BOUNDARY
- STATE FOREST BOUNDARY
- FEDERAL GAMELAND BOUNDARY
- STATE GAMELAND BOUNDARY
- MILITARY RESERVATION BOUNDARY
- COUNTY LINE
- STATE LINE
- INCORPORATED CITY OR VILLAGE, (GENERALIZED)
- FREE OR TOLL FERRY
- CANAL
- NARROW STREAM
- WIDE STREAM
- DAM WITH LOCK
- DAM
- RESERVOIR, POND OR LAKE
- COMMUNITY AND TOWN CENTER
- COUNTY SEAT
- SCHOOL
- COLLEGE OR UNIVERSITY
- HOSPITAL
- CHURCH
- CHURCH WITH CEMETERY
- CEMETERY
- PATROL STATION
- CORRECTIONAL OR PENAL INSTN.
- HIGHWAY GARAGE OR MAINT. YARD
- HIGHWAY DIV. OR DIST. OFFICE
- WEIGHT STATION
- MONUMENT-SMALL HISTORICAL SITE
- LIGHTHOUSE
- MOUNTAIN PEAK
- REST AREA
- TRIANGULATION STATION
- COAST GUARD STATION
- MILITARY AIRFIELD
- COMMERCIAL OR MUNICIPAL FIELD
- HANGAR ON FIELD
- LANDING STRIP
- MARKED AUXILIARY FIELD



2007 AADT
ANNUAL AVERAGE DAILY TRAFFIC
WARREN COUNTY
NORTH CAROLINA
 GENERATED BY THE
TRAFFIC SURVEY GROUP
 TRANSPORTATION PLANNING BRANCH
 PREPARED BY THE
NORTH CAROLINA DEPARTMENT OF TRANSPORTATION
 INFORMATION TECHNOLOGY - IMG UNIT
 IN COOPERATION WITH THE
U.S. DEPARTMENT OF TRANSPORTATION
 FEDERAL HIGHWAY ADMINISTRATION



NOTE: MAP INCLUDES ONLY STATE MAINTAINED ROADS OR IMPORTANT NON-SYSTEM ROADS. MILEAGE NOT SHOWN ON FRONTAGE ROADS. ROADS SHOWN AS OF DEC. 28, 2007



COPIES OF THIS MAP ARE AVAILABLE
 AT THE FOLLOWING ADDRESS:
 N.C. DEPARTMENT OF TRANSPORTATION
 INFO CENTER
 1000 WEST GATEWAY BLVD.
 RALEIGH, N.C. 27603